

CONTRIBUTI DI RICERCA CRENOS



**A TIME VARYING PARAMETER APPROACH TO ANALYZE THE  
MACROECONOMIC CONSEQUENCES OF CRIME**

**Claudio Detotto  
Edoardo Otranto**

**WORKING PAPERS**

---

**2010/02**



**CENTRO RICERCHE ECONOMICHE NORD SUD  
(CRENoS)  
UNIVERSITÀ DI CAGLIARI  
UNIVERSITÀ DI SASSARI**

Il CRENoS è un centro di ricerca istituito nel 1993 che fa capo alle Università di Cagliari e Sassari ed è attualmente diretto da Stefano Usai. Il CRENoS si propone di contribuire a migliorare le conoscenze sul divario economico tra aree integrate e di fornire utili indicazioni di intervento. Particolare attenzione è dedicata al ruolo svolto dalle istituzioni, dal progresso tecnologico e dalla diffusione dell'innovazione nel processo di convergenza o divergenza tra aree economiche. Il CRENoS si propone inoltre di studiare la compatibilità fra tali processi e la salvaguardia delle risorse ambientali, sia globali sia locali. Per svolgere la sua attività di ricerca, il CRENoS collabora con centri di ricerca e università nazionali ed internazionali; è attivo nell'organizzare conferenze ad alto contenuto scientifico, seminari e altre attività di natura formativa; tiene aggiornate una serie di banche dati e ha una sua collana di pubblicazioni.

**www.crenos.it  
info@crenos.it**

CRENoS – CAGLIARI  
VIA SAN GIORGIO 12, I-09100 CAGLIARI, ITALIA  
TEL. +39-070-6756406; FAX +39-070- 6756402

CRENoS - SASSARI  
VIA TORRE TONDA 34, I-07100 SASSARI, ITALIA  
TEL. +39-079-2017301; FAX +39-079-2017312

Titolo: A TIME VARYING PARAMETER APPROACH TO ANALYZE THE MACROECONOMIC CONSEQUENCES OF CRIME

ISBN: 978-88-84-67-569-9

Prima Edizione: Febbraio 2010

© CUEC 2010  
Via Is Mirrionis, 1  
09123 Cagliari  
Tel./Fax 070 291201  
www.cuec.it

# A Time Varying Parameter Approach to Analyze the Macroeconomic Consequences of Crime

Claudio Detotto, Edoardo Otranto  
*DEIR and CRENoS,  
University of Sassari*

## Abstract

Criminal activity performs like a tax on the entire economy: it discourages domestic and foreign direct investments, it reduces firms' competitiveness, and reallocates resources creating uncertainty and inefficiency. Although the impact of economic variables on crime has been widely investigated, there is not much concern about crime also affecting the overall economic performance. This work aims to bridge this gap by presenting an empirical analysis of the macroeconomic consequences of criminal activity. Italy is the case study for the time span 1979-2002. Dealing with a state space framework, a time varying parameter approach is employed to measure the impact of criminality on real Gross Domestic Product along time, and to measure the asymmetric impact in recession and expansion periods. The analysis is completed evaluating the effects of crime fluctuations in the long period by an impulse response analysis.

**Keywords:** business cycle, crime, crowding-out effects, economic growth, impulse response analysis, Kalman filter.

**JEL classification:** C22, E20, E32, K14.

# 1 Introduction

Crime has a significant impact on the society. On one hand, criminal activity allows the consumption of illicit goods or services which could not otherwise be consumed. On the other hand, crime imposes great costs to the public and private actors, such as stolen and damaged goods, lost lives, security spending, pain and suffering. The estimation of such social cost of crime has become an important field of study in the last few decades (Czabanski, 2008), which shows how crime imposes a significant burden onto society. For example, Brand and Price (2000) estimate the total crime costs in Wales and England for the Home Office using survey data. They estimate a total expenditure of 60 billion pounds per year. Anderson (1999) finds that the total annual cost of criminal activity in the United States exceeds one trillion dollars. A recent work of Detotto and Vannini (2009) evaluates the burden of a subset of crime offenses in Italy (about 65% of all crime offenses) during the year 2006. The estimated total social cost is more than 38 billion euros, which amounts to about 2.6% of Italian Gross Domestic Product (GDP).

Although the identification and the estimation of crime costs have received wide attention in economic literature, the detrimental effect of crime to the (legal) economic activity is still neglected. Crime acts like a tax on the entire economy: it discourages domestic and foreign direct investments, reduces the competitiveness of firms, and reallocates resources, creating uncertainty and inefficiency.

A way to measure the crowding out effect of crime is to estimate its impact on the economic performance of the country or region. We can distinguish two approaches (Sandler and Enders, 2008). The first approach is to compare the overall economic performance of countries or regions with high level of crime to that of countries with low levels of crime, controlling for other explanatory

variables. This approach descends from the cross-section models of economic growth in which the economic performance is regressed on a number of socio-economic variables (Barro, 1996).

In this framework we can consider the works of Mauro (1995), who shows a significant negative relationship between "subjective corruption indices" and the growth rate among 70 countries in the early 1980s; Forni and Paba (2000), who examine the impact of several socio-economic variables on the economic performance of the Italian provinces during the period 1971-1991; Peri (2004), who, using a larger data set (from 1951 to 1991), shows that the annual per capita income growth is negatively affected by murders after controlling for other explanatory variables; Cardenas (2007), who focuses on the relationship between crime and growth rate in an unbalanced panel of 65 countries during the period 1971-1999.

This approach allows working with a large amount of information for the key variables, such as per capita GDP or crime indexes; on the other hand, this approach is hampered by the data source problems, the cross-border spillovers effects, and the dynamic effect identification. Moreover, it suffers from the selection of countries (switching regions changes the frequency and the importance of crimes).

The second framework consists in the univariate and multivariate time series methodology. Recently, there have been many contributions to this approach, where crime is considered along with economic variables. Masih and Masih (1996) estimate the relationship between different crime types and their socioeconomic determinants within a multivariate cointegrated system for the Australian case. Narayan and Smyth (2004) implement the Granger causality tests to examine the relationship among seven different crime typologies, unemployment and real wage in Australia within an AutoRegressive Distributed Lag (ARDL) model. Mauro and Carmeci (2007) empirically explore the link between crime, unemployment and economic growth using Italian regional data. Carde-

nas (2007) analyzes Colombia's annual GDP growth between 1951 and 2005. Habibullah and Baharom (2009), applying an ARDL model to the Malaysian case, analyze the relationship between real gross national product and different crime offences. Recently, Detotto and Pulina (2009) applied an ARDL model to the Italian data (1970 - 2004) to assess the relationship between several crime offences, deterrence indicators and economic variables. Chen (2009) implements a Vector AutoRegressive (VAR) model to examine the long-run and causal relationships among unemployment, income and crime in Taiwan.

The time series approach seems to have several advantages in terms of interpretability of results and application, because it allows the identification of dynamic processes and the forecasting analysis. Moreover, it does not need to distinguish in advance the endogenous variables from exogenous ones. On the other hand, it needs a large number of observations (rarely available for crime variables) to guarantee the robustness of estimators and the performance of statistical tests. Furthermore, the choice of the economic model, in which to insert the crime variable, could affect the analysis; changing the explicative variables, the effect of crime on economic growth will change.

To avoid this problem, we propose an autoregressive time series model, in which the GDP variations are explained by its past history and a crime variable; in practice we choose the best model which is able to explain the economic fluctuations and verify if a crime variable could explain more.

Moreover, we allow the variation along the time of the crime coefficient, using a state space model (see, for example, Harvey, 1989). This choice provides the measurement of the magnitude of the economic impact of crime on society over time. In addition, this approach can answer more questions than a fixed parameter model. Firstly, if crime acts as a brake on economic growth, is it for the whole period? Secondly, the evolution of the crime ef-

fect, detecting its trends, cycles or break-points can be analyzed. Furthermore, we can answer the following relevant questions: Do the wider economic distortions depend on the level of criminal activity? Is there a threshold beyond which any further increase in crime does not carry any wider economic distortions? Or is there a "natural" level of crime, after which the negative effects occur? Does the evolution of the crime distortions display different behaviors in the different phases of the business cycles? Thus, the analysis could lead to important policy implications. First, it adds a useful component in evaluating the cost of crime. This aspect would allow the full understanding of the burden of crime, and the comparison with other social diseases. Furthermore, the analysis may become a useful tool to calibrate policies for combating crime. Indeed, when implementing a cost-benefit analysis, it may be convenient to increase the contrast level of crime when the economic cost of crime is greater.

We apply this model to the Italian case, for which a large data set with monthly frequency (from January 1979 up to September 2002) is available. Italy makes an interesting case study not only because it accounts for about one-tenth of all crime offences in the European Union (source Eurostat), but also, and especially, because Italian crime is historically characterized by a strong incidence of organized crime. Mafia, Camorra and 'Ndrangheta, along with other minor criminal organizations, strongly affect the economic performance of much of the country.

The paper is organized as follows. In the next section we present our model, which will be applied to the Italian data in section 3. In section 4 we propose an impulse response function analysis to evaluate the effects of crime on economy in the long period. Some remarks will conclude the paper.

## 2 A state-space model for evaluating the effects of crime on economy

As said in the introduction, to avoid the dependence on the model specification and to detect the effect of the crime on the economic growth, we propose a pure autoregressive (AR) model, with the variable representing the crime as the only explicative variable. The model is expressed by:

$$y_t = \alpha_0 + \sum_{i=1}^k \alpha_i y_{t-i} + (\bar{\beta} + \xi_t) c_{t-h} + w_t \quad (2.1)$$

where  $y_t$  represents the first differences of the logarithms of the GDP at time  $t$ , whereas  $c_{t-h}$  is the crime variable at time  $t-h$ ;  $h$  is the lag for which the crime manifests its effect on GDP growth (it is quite reasonable that the impact of crime on economic output appears with some time delay). The disturbance  $w_t$  are Normally distributed with mean 0 and variance  $\sigma^2$ ;  $\alpha_i$  ( $i = 0, 1, \dots, k$ ) are unknown AR coefficients. The coefficient of  $c_{t-h}$  can be split in two parts: the steady state coefficient  $\bar{\beta}$  and the variation with respect to  $\bar{\beta}$  at time  $t$ , represented by  $\xi_t$ . In other words, the coefficient of the crime variable is time-varying, supposing that the crime effect can vary along the time. Hereafter, we will call this coefficient:

$$\beta_t = \bar{\beta} + \xi_t$$

The dynamics of  $\xi_t$  is represented by:

$$\xi_t = \gamma \xi_{t-1} + v_t \quad (2.2)$$

where  $v_t \sim N(0, \nu^2)$ .

Equations (2.1) (*observation equation*) and (2.2) (*state equation*) constitute a particular kind of *state-space model* and can be easily estimated using the *Kalman filter* to explicit the likelihood



function to be maximized. The Kalman filter is an algorithm for calculating an optimal forecast of the value of  $\xi_t$  on the basis of information observed through date  $t-1$ : for details on the Kalman filter and the state-space models we refer to Harvey (1989) and Hamilton (1994).

Before to conclude this section, we dwell upon a computational aspect. In (2.1) we prefer to use always AR processes and not more general and parsimonious ARMA processes, also when the order  $k$  is high. In fact the use of an ARMA process can create some difficulties in its identification; the "general-to-specific" strategy is tricky in this case because different values of the parameters will yield the same likelihood function (Harvey, 1989, pp. 79). On the contrary, the AR processes are quite easy to estimate and specify, although they may sometimes require a large number of parameters.

### 3 The Italian case

We apply model (2.1)-(2.2) to study the impact of crime on economic performance in Italy. We use monthly data of Italian GDP. Data refer to the period January 1979 - September 2002 (source ISTAT). GDP series is expressed in real term and adjusted for the seasonal component; then it has been transformed to monthly frequency using the method proposed in Fernandez (1981). In Figure 1 the GDP fluctuation are shown, with the gray bars indicating the recession periods (detected by the Economic Cycle Research Institute-ECRI).

#### *The crime proxy*

An important task in estimating model (2.1)-(2.2) is the choice of a good indicator to represent the crime activity.

The official crime data come from police reporting activity, and they suffer from the underreporting and underrecording bias

(Mauro and Carmeci, 2007). In other words, official data represent only the tip of the crime iceberg. Moreover, in long period analysis we have to take into account the changes in reporting that come from technical innovations, police efficiency, depenalisation or, conversely, law intervention. Hence, we need a crime index that is sufficiently well reported by Police and has the same definition for all period considered.

Following Forni and Paba (2000), Cardenas (2007) and Mauro and Carmeci (2007), the number of recorded committed intentional homicides are used here as the crime activity indicator. The homicide rates are chosen for their highest reliability among all crime variables. Besides, a number of murder events are caused by mafia activity. In this sense, homicide incidents can be interpreted as a roughly indicator of organized crime activity.

Figure 2 shows the plot of the monthly totals of intentional homicides and the total crime offences over the 1979 through 2002 period. Notice that the two series track each other sufficiently well.

Table 1 shows the correlation statistics of murder series with the time series of the main crime offenses, namely robberies, drug offenses, fraud and total crime. The homicide rates appear to be well correlated to the other crime offenses, especially to the total crime offenses (the correlation coefficient is 0.60), the drug offenses (0.64) and the robberies (0.62).

#### *Preliminary analysis*

Dealing with stationary processes, before estimating the model, we investigate the integration properties of the series LGDP (logarithm of GDP) and LHOM (logarithm of homicide rates) using the usual unit root tests. In particular, we have applied the Augmented Dickey Fuller (ADF), Kwiatkowski-Phillips-Schmidt-Shin (KPSS) and Phillips Perron (PP) tests. The results are shown in Table 2. LGDP is found to be stationary in the first difference,

whereas the unit root tests for LHOM seem to be inconclusive. The PP test indicates LHOM is stationary, while ADF and KPSS test cannot reject the null hypothesis of unit root. It is important to note that the presence of a shift in the level of the series can reduce the power of the unit root tests if the shift is ignored (Lanne et al., 2002). More precisely, the unit root tests “are biased toward the nonrejection of a unit root” (Enders, 1995, p. 243). Featuring a break date in September 1990, the series is divided in two parts and we perform the unit root tests in each portion. Both components seem to be stationary, even if “the power of this tests is reduced due to the smaller sample sizes” (Kirchgässner and Wolters (2008), p. 176). Hence, we test the presence of a structural break in the series, identified using the procedure proposed by Lanne et al. (2001); then we apply the modified ADF (MADF) test, as proposed by Saikkonen and Lütkepohl (2002) and Lanne et al. (2002).

As described in the last row of Table 3, the unit root test with a level shift is performed. The unit root statistic test is -3.136, that allows us to refuse the null hypothesis of absence of stationarity at 5% level. The critical values used here are tabulated in Lanne et al. (2002).

The previous analysis suggests to use, in (2.1)-(2.2), the differences of the logs of GDP as  $y_t$  and the logs of the homicides as  $c_t$ . Moreover the presence of a break date in September 1990 supports the use of a time varying parameter model.<sup>1</sup> In fact, as pointed out by Harvey (1989, p. 308), when a model is subject to a change of regime, a time varying parameter model can be more appropriate.

The last step we need to estimate model (2.1)-(2.2) is the choice of the lag  $h$  with which the crime variable has effect on the real

---

<sup>1</sup>The presence of a structural change in September 1990 is confirmed by a classical Chow test applied on a linear autoregressive model.

GDP variations. Following Enders et al. (1992) approach, we have tested different period lags for LHOM, and the model with  $h = 3$  is found to be the best fitting model in terms of BIC.

*Estimation and validation of the model*

The model identified in the previous subsection is applied to study the effect of crime on the economy in Italy, using the differences of the logs of GDP as  $y_t$  and the logs of the homicides as  $c_t$  and  $h = 3$ . The autoregressive order  $k$  was selected using a BIC criterion on a linear model (2.1) with  $\xi_t = 0$  for every  $t$ .<sup>2</sup> This procedure provides  $k = 14$ .

The maximization of the likelihood was performed using the Berndt, Hall, Hall, Hausman (BHHH) optimization algorithm. An important computational task is constituted by the choice of starting points of the Kalman filter recursion. Clearly, the numerical optimization methods work better if the starting values are chosen from a close neighborhood of their true values (Zivot et al., 2004, p. 32). Unfortunately, how to identify an appropriate starting value for the unknown parameters of a state space model is still an open question in literature. Following Hamilton's (1994, p. 3057) approach, the OLS estimates are used as starting values of  $\alpha_0, \dots, \alpha_{14}$  and  $\bar{\beta}$ . Then, we impose the starting values of  $\sigma^2$  and  $\nu^2$  equal to one. For what concerns the  $\gamma$  coefficient, we do not have any ex-ante information about this value; we use a simple grid approach with 0.01 increase in the parameter and we select the model in correspondence of the minimum value of BIC.

Table 3 reports the estimated coefficients of our state space model and some diagnostic statistics. The Ljung-Box statistic shows a clear evidence in favor of the hypothesis of no autocorrelation. Also, the goodness of fitting and prediction of the time varying parameters model and the fixed parameters model are evaluated. The RMSE (root mean square errors) of the one-step ahead

---

<sup>2</sup>The linear model explains the 92.6% of the variance of  $y_t$ .

forecasts in-sample and out-of-sample prediction is calculated in both models (bottom of Table 3). The in-sample forecasting evaluates the goodness of fit of the model in the full data set, while the out-of-sample forecasting indicates the ability of a given model to predict future values.<sup>3</sup> The RMSEs are compared with respect to the RMSEs of the corresponding linear model without time varying parameters; we can note that they are fewer in the case of time varying parameters model, especially for the out-of-sample forecasts, and the modified Diebold-Mariano test (Harvey et al., 1997) rejects the null hypothesis of equal RMSE. Hence, we can conclude that the time varying parameters model performs better than the fixed parameters model.

#### *The crime effect*

Our interest mainly concerns the coefficients of crime. The coefficient  $\bar{\beta}$  yields -0.040, whereas the  $\gamma$  parameter of the state equation is equal to 0.89, that indicates a certain persistence of the crime coefficient.

Figure 3 shows the evolution of the smoothed estimation of  $\beta_t$ .<sup>4</sup> The coefficient varies with a cyclical behavior around the mean value  $\bar{\beta}$ . The impact of homicides rates on real GDP growth in absolute term is remarkably high in two periods (1980-1983 and 1992-1994) with a maximum in September 1992. Each  $\beta_t$  is significantly different from zero with high probability.

Interestingly,  $\beta_t$  is quite lowly correlated to the homicide rates ( $r = -0.11$ ). This fact implies that the evolution of the crime effect cannot be explained by the crime trend, but it seems to follow a specific cycle. Moreover, this result, along with the low values of

---

<sup>3</sup>We have re-estimated the model excluding the last 21 observations, which are used to compare the forecasts.

<sup>4</sup>The smoothed estimation is a by-product of the Kalman filter, which provides the estimation of the parameter conditional on the full information available.

$\beta_t$ , suggests that the economic costs of crime have a strong fixed component.

Remarkably, the impact of crime on real GDP growth seems to be more relevant during the recessions than the expansion periods. The average value of  $\beta_t$  is -0.039 during expansions, and -0.041 during recessions. Notably, the ANOVA F-test (=357.67) and the Welch F-test (=449.52) for equality of means between the two categories, are significant at one-percent level. This is reasonable if we consider that the crime activity imposes a cost to the legal activity, and such a cost could be heavier during contraction regime. In other words, crime affects more when the economic growth slows down because they divert resources needed for economic recovery. Moreover, the marginal economic costs have the highest dependency on crime level during slump: calculating the correlation coefficient between  $\beta_t$  and the murder rate, it is not significantly different from zero for the overall period and during expansion, whereas it is significant at 1% size (and equal to -0.346) during recession. In other words, changes in crime rates are perceived better when the economy is slowing, conditioning its growth opportunities.

During recessions the economic costs are, on average, 5% more than during expansions. During a recession, one percent increase in crime activity leads, on average, to a reduction of monthly economic growth by 0.00041%. In monetary values, it accounts for about half a million of euros (base-year = 2006).

## 4 Long run crime effects

The results illustrated before constitute a kind of short-run effect. Following Enders (1995, pp. 277-290), the impulse response function (IRF) is implemented to simulate the long-run effect of a one-percent shock in monthly crime.

In order to implement the IRF, we have to test for the exogeneity between the homicide rates and GDP growth. If the murder rate is not exogenous, one shock in murders series would impact the economic growth, which in turn affects the homicide rate. In this way, the impulse response analysis should be performed with a dynamic system of equations to capture the effect in both directions. Why would the homicide variable be endogenous? As shown in the previous section, murder rates are correlated to several types of crime offenses, such as burglaries or frauds. On one hand, it is reasonable to expect that an increase in criminal activity raises, directly or indirectly, the homicide rates, by increasing opportunities that may lead to the occurrence of murders. On the other hand, a vast literature shows how crime rates depend on the business cycle. Hence, the economic growth may impact, although indirectly, the homicide rate. In order to establish the exogeneity of homicide rates, a Granger causality test is implemented and the statistic test is not significant at 5% level (F-statistic = 0.606). The null hypothesis is the absence of Granger causality, which implies the strong exogeneity of the variable of interest (Maddala, 1992, pp.325-331). The null hypothesis cannot be rejected: DL-GDP does not Granger-cause LHOM, so the homicide rate does not seem to respond to variation of real economic growth. More evidence for exogeneity can be obtained applying the Hausman test.

A version of the Hausman test proposed by Davidson and MacKinnon (1989, 1993) is used. In practice two OLS regressions are run. In the first regression, the variable suspected to be endogenous, namely homicides, is regressed on all exogenous variables and the instrument, and the residuals are retrieved; then in the second regression, the original (linear) model is re-estimated including the residuals from the first regression as additional regressors.

Finding an instrument variable for homicide rates is not triv-

ial. Murder is a type of violent crime whose determinants can be divided into two groups. On one hand, as explained earlier, the economic variables, such as business cycle, employment rate and income distribution, directly or indirectly affect the murder rate. On the other hand, socio-demographic variables, such as cultural aspects, urbanization, modernization, demographic structure, play a significant role in explaining the rate of homicides. Then, our goal is to identify an instrumental variable that depends mostly from socio-cultural variable instead of economic ones. Obviously, it is known that the economic and socio-cultural variables affect each other, but we expect that they need a long period of time so that the effect takes place.

After analyzing all crime cases, the sex assault rate was chosen; this offense is largely related to cultural aspect and social phenomena, such as the role of women in society, urbanization and civilization, and it does not seem to be correlated with the economic cycle in the short run. The correlation between the seasonally adjusted series of sex assaults and murders is sufficiently high (0.58), while the one between sex assault and GDP growth rates is low (-0.10). Moreover, the correlation between the instrumental variable and the residuals of the linear model is not significantly different from zero.

Sex assaults seem to offer a good instrument for murder rate; hence, the Hausman test can be implemented. In the first stage, the coefficient of the instrumental variable, namely the three month lagged sex assaults, is significant. In the second step, the coefficient on the first stage residuals is not significantly different from zero. This result indicates that we could not reject the null hypothesis of exogeneity of homicide variable.

Hence, treating the homicide rate as an exogenous variable, we implement the impulse response function as in Enders (1992). As Figure 4 shows, after a three-period delay, GDP growth declines and then returns to its initial value in a few months. Discounting



all subsequent GDP losses, it is possible to evaluate the cumulative value of a one percent crime shock, for recession and growth periods separately. During recession (expansion) times, a rise in crime by 1% causes, on average, a reduction of GDP growth of about 2.6 million euros (2.4 million euros). In practice, the long run crime costs are 5% higher during recession than expansion.

## 5 Remarks

We have proposed a state space model to analyze the effects of crime on economic growth and we have applied this methodology to the Italian data. The model seems able to answer several questions, that are relevant in the study of the effects of criminality on economy. We recall the questions made in section 1, and resume the findings emerging from our study:

1. *If crime acts as a brake on economic growth, is it for the whole period?* The results confirm that crime negatively impacts the economic performance; this may happen through several channels: crime discourages investments, reduces the competitiveness of the firms, and reallocates resources creating uncertainty and inefficiency. Our model shows that the entire sample period is affected by an economic cost, which can be deduced by Figure 3. On average, a rise in crime rates by 1% reduces the real economic growth by 0.00040% in a month. Furthermore, the findings suggests that the economic costs of crime exhibit a very significant fixed component.
2. *Does the wider economic distortions depend on the level of criminal activity?* We have shown that the correlation between the time-varying effect of the crime and the murder rate is not significantly different from zero, so it seems that

there is no relationship between the marginal impact of crime and its level.

3. *Is there a threshold beyond which any further increase in crime does not carry any wider economic distortions? Or is there a "natural" level of crime, after which the negative effects occur?* Figure 3 shows that the dynamics of the economic cost of crime is time-varying but always significant. Hence, it seems that there is not a threshold value.
4. *Does the evolution of the crime distortions display different behaviors in the different phases of the business cycles?* We show that the wider economic distortions of crime are not constant over time and have an asymmetric effect in growth and recession periods. Specifically, the negative impact of crime on Italian economic performance is 5% stronger during recession than expansion periods. Moreover, through the IRF analysis, we have obtained that, during economic contractions, a one percent increase in crime rates causes, on average, a reduction in the real economic growth by 0.00041% in a month and by 0.0022% in a year, which is equal to 0.5 and 28 million of euros, respectively.

Finally, the analysis seems to suggest the presence of a cyclical component in the crime effects, strictly related to the economic business cycle. It would be interesting for future research to investigate this aspect.

## Acknowledgements

We are grateful to Juan de Dios Tena Horrillo and the participants of the Workshop on "Applied analysis of crime: Implications for cost-effective criminal justice policies", held in Porto Conte (Italy)

in 26 October 2009, for the useful comments. Financial support from Italian MIUR under grant 2006137221\_001 is gratefully acknowledged.

## References

- [1] Anderson, D.A. (1999): The aggregate burden of crime. *Journal of Law and Economics* 42, 611-642.
- [2] Barro, R.J. (1996): Democracy and Growth. *Journal of Economic Growth* 1, 1-27.
- [3] Brand, S., Price, R. (2000): The economic and social costs of crime. *Home Office Research Study* n.217, Home Office, London (UK).
- [4] Cardenas, M. (2007): Economic growth in Colombia: a reversal of fortune? *Ensayos Sobre Politica Economica* 25, 220-259.
- [5] Chen, S.W. (2009); Investigating causality among unemployment, income and crime in Taiwan: evidence from the bounds test approach. *Journal of Chinese Economics and Business Studies* 7, 115-125.
- [6] Czabanski, J. (2008): *Estimates of cost of crime: history, methodologies, and implications*. Berlin: Springer.
- [7] Davidson, R. and MacKinnon, J.G. (1989): Testing for consistency using artificial regressions. *Econometric Theory* 5, 363-384.
- [8] Davidson, R. and MacKinnon, J.G. (1993): *Estimation and inference in econometrics*. Oxford: University Press.
- [9] Detotto, C., Pulina, M. (2009). Does more crime mean fewer jobs? An ARDL model. *Working Paper CRENoS* 2009/05.

- [10] Detotto, C., Vannini, M. (2009): Counting the cost of crime in Italy. *Workshop on Applied analyses of crime: Implications for cost-effective criminal justice policies*, Porto Conte Ricerche 26 October 2009.
- [11] Enders, W., Sandler, T. and Parise, G.F. (1992): An econometric analysis of the impact of terrorism on tourism. *Kyklos, International Review for Social Sciences* 45, 531-554.
- [12] Enders, W. (1995): *Applied econometric time series*. New York: John Wiley & Sons, Inc.
- [13] Fernandez, R.B. (1981): A methodological note on the estimation of time series. *Review of Economics and Statistics* 63: 471-478.
- [14] Forni, M., Paba, S. (2000): The sources of local growth: Evidence from Italy. *Giornale degli Economisti, Annali di Economia*, 59: 1-49.
- [15] Habibullah, M.S., Baharom, A.H. (2009): Crime and economic conditions in Malaysia. *International Journal of Social Economics* 36, 1071-1081.
- [16] Hamilton, J.D. (1994): State space models. In Engle, R.F. and McFadden, D.L. (eds.) *Handbook of Econometrics* 2, Amsterdam: North Holland, Vol. 4: 3039-3080.
- [17] Harvey, A.C. (1989): *Forecasting, structural time series models and the Kalman filter*. Cambridge: Cambridge University Press.
- [18] Harvey, D., Leybourne, S., Newbold, P. (1997): Testing the equality of prediction mean squared errors. *International Journal of Forecasting* 13, 281-291.

- [19] Kirchgässner, G. and Wolters, J. (2008): *Introduction to modern time series analysis*. Berlin: Springer.
- [20] Lanne, M., Lütkepohl, H., Saikkonen, P. (2001): Test procedures for unit roots in time series with level shifts at unknown time. *Oxford Bulletin of Economics and Statistics* 65, 91-115.
- [21] Lanne, M., Lütkepohl, H. and Saikkonen, P. (2002): Comparison of unit root tests for time series with level shifts. *Journal of Time Series Analysis* 23, 667-685.
- [22] MacKinnon, J.G. (1996): Numerical Distribution Functions for Unit Root and Cointegration Tests. *Journal of Applied Econometrics* 11, 601-618.
- [23] Maddala, G.S. (1992): *Introduction to econometrics* New York: MacMillan.
- [24] Masih, A.M.M., Masih, R. (1996): Temporal causality and the dynamics of different categories of crime and their socioeconomic determinants: evidence from Australia. *Applied Economics* 28, 1093-1104.
- [25] Mauro, P. (1995): Corruption and Growth. *The Quarterly Journal of Economics* 110, 681-712.
- [26] Mauro, L., Carmeci, G. (2007): A poverty trap of crime and unemployment. *Review of Development Economics* 11, 450-462.
- [27] Narayan, P.K., Smyth, R. (2004): Crime rates, male youth unemployment and real income in Australia: evidence from Granger causality tests. *Applied Economics* 36, 2079-2095.
- [28] Peri, G. (2004): Socio-cultural variables and economic success: evidence from Italian provinces 1951-1991. *Topics in Macroeconomics* 4, 1-34.

- [29] Phillips, P.C. and Perron, P. (1988): Testing for a unit root in time series regression. *Biometrika* 75, 335-346.
- [30] Saikkonen, P. and Lütkepohl, H. (2002): Testing for a unit root in a time series with a level shift at unknown time. *Economic Theory* 18, 313-348.
- [31] Sandler, T., Enders, W. (2008): Economic consequences of terrorism in developed and developing countries: An overview. In Keefer, P. and Loayza, N. (eds.) *Terrorism, Economic Development and Political Openness*. Cambridge: Cambridge University Press.
- [32] Zivot, E., Wang, J., Koopman, S.J. (2004): State space modelling in macroeconomics and finance using SsfPack in S+Finmetrics. In Harvey A., Koopman, S.J., Shephard, N. (eds) *State space and unobserved component models: Theory and application*. Cambridge: Cambridge University Press, 284-335.

Table 1: Correlation of some crime variables (sample period: January 1979- September 2002)

	Total	Homicides	Drug offences	Thefts	Robberies	Fraud
Total	1					
Homicides	0.603	1				
Drug offences	0.702	0.640	1			
Thefts	0.887	0.593	0.526	1		
Robberies	0.710	0.625	0.697	0.593	1	
Fraud	0.758	0.423	0.567	0.526	0.535	1

Table 2: Unit root tests

Variable	ADF	lags	KPSS	lags	PP	lags	Period	MADF	lags
LGDP	-2.053	11	0.274***	14	-1.552	2	1/79-9/02		
DLGDP	-3.451**	10	0.221	3	-4.825***	71	1/79-9/02		
LHOM	-2.072	5	0.159**	13	-12.242***	11	1/79-9/02		
LHOM	-2.872*	3	0.25	8	-8.566***	7	1/79-8/90		
LHOM	-9.827***	0	0.415*	7	-10.346***	6	9/90-9/02		
LHOM							1/79-9/02	-3.136**	5

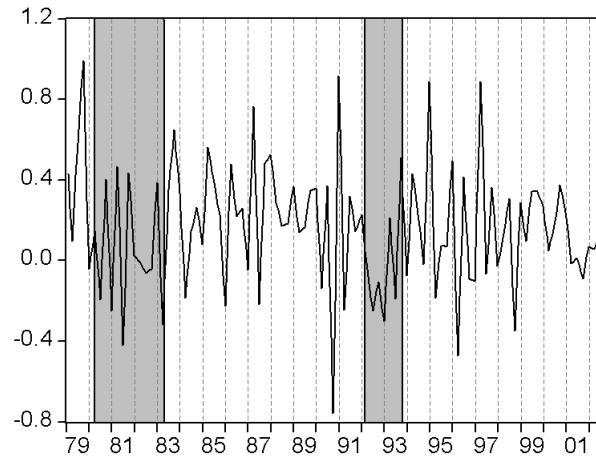
Notes: (1) All critical values for rejection of null hypothesis of a unit root are tabulated in MacKinnon (1996), except the critical values of URSB, which are tabulated in Lanne et al. (2002); (2)\*\*\*, \*\* and \* indicate statistical significance at the 1%, 5% and 10%, respectively; (3) D denotes the first difference operator; (4) The number of lags in ADF and URSB tests are set upon BIC criterion, in KPSS and PP tests upon Newey-West bandwidth; (5) The break date considered in URSB test is September 1990; (6) All variables are expressed in natural logarithm.

Table 3: Estimation results and diagnostic statistics for the state-space model (standard errors in parentheses)

Parameters Estimation				
$\alpha_0$	$\alpha_1$	$\alpha_2$	$\alpha_3$	$\alpha_4$
0.222	1.767	-0.807	-1.721	3.041
(0.020***)	(0.096***)	(0.158***)	(0.138***)	(0.156***)
$\alpha_5$	$\alpha_6$	$\alpha_7$	$\alpha_8$	$\alpha_9$
-1.378	-1.562	2.744	-1.247	-1.016
(0.179***)	(0.162***)	(0.176***)	(0.152***)	(0.153***)
$\alpha_{10}$	$\alpha_{11}$	$\alpha_{12}$	$\alpha_{13}$	$\alpha_{14}$
1.772	-0.808	-0.391	0.673	-0.308
(0.147***)	(0.123***)	(0.115***)	(0.084***)	(0.045***)
$\beta$	$\gamma$	$\sigma^2$	$\nu^2$	
-0.040	0.895	-5.558	-14.105	
(0.004***)	(0.370**)	(0.121***)	(7.980*)	
Diagnostic Statistics				
$LB_{24}$	in sample RMSE	DM	out of sample RMSE	DM
22.32***	0.062/0.063	2.443**	0.043/0.105	4.036***

Notes:(1) \*\*\*, \*\* and \* indicate significance at the 1%, 5% and 10%, respectively. (2) $LB_{24}$  is the Ljung-Box statistic at lag 24;(3) in sample and out of sample RMSEs compare the RMSE of the time varying parameter model against the RMSE of the linear model; (4) DM is the Diebold-Mariano statistic.

Figure 1: First differences of the logarithms of real monthly seasonally adjusted Italian GDP. ).



Notes: The grey shadings present the recessions occurred in Italy during the period 1979 -2002. The dating of the Italian business cycle is calculated by ECRI.

Figure 2: Dynamics of homicide rate (left scale) and total crime rate (right scale).

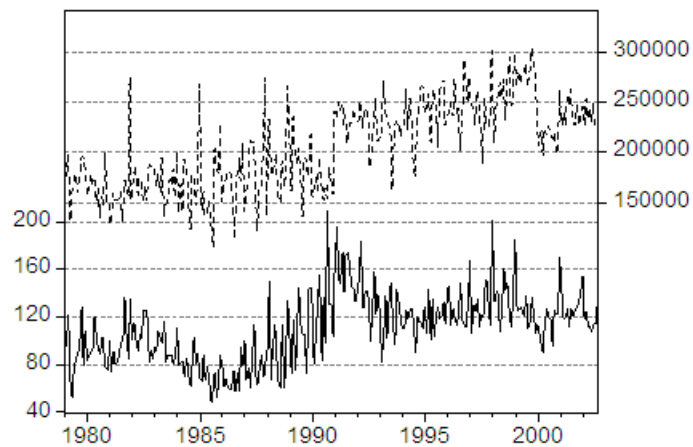
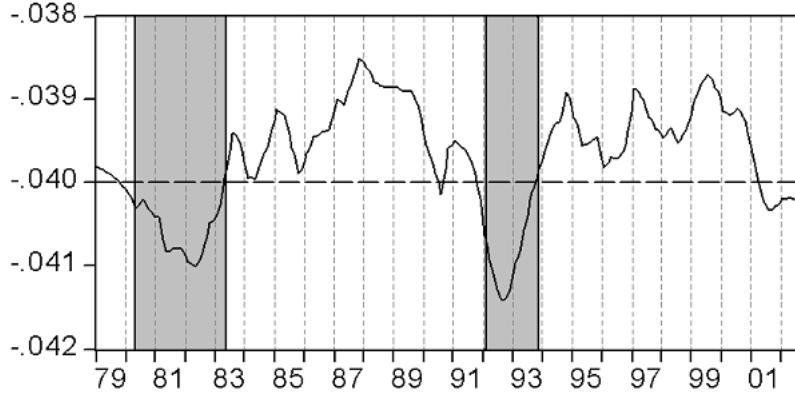




Figure 3: Dynamics of the  $\beta_t$  coefficient.



Notes: The grey shadings present the recessions occurred in Italy during the time span 1979 up to 2002. The dating of the Italian business cycle is calculated by ECRI.

Figure 4: Italy's wider economic distortions of crime (GDP growth response to an increase of crime by 1%).



## Ultimi Contributi di Ricerca CRENoS

I Paper sono disponibili in: <http://www.crenos.it>

- 10/01 *Manuela Deidda*, “Precautionary saving, financial risk and portfolio choice”
- 09/18 *Manuela Deidda*, “Precautionary savings under liquidity constraints: evidence from Italy”
- 09/17 *Edoardo Otranto*, “Improving the Forecasting of Dynamic Conditional Correlation: a Volatility Dependent Approach”
- 09/16 *Emanuela Marrocu, Raffaele Paci, Marco Pontis*, “Intangible capital and firms productivity”
- 09/15 *Helena Marques, Gabriel Pino, Juan de Dios Tena*, “Regional inflation dynamics using space-time models”
- 09/14 *Jaime Alvarez, David Forrest, Ismael Sanz, Juan de Dios Tena*, “Impact of Importing Foreign Talent on Performance Levels of Local Co-Workers”
- 09/13 *Fabio Cerina, Francesco Mureddu*, “Is Agglomeration really good for Growth? Global Efficiency and Interregional Equity”
- 09/12 *Federico Crudu*, “GMM, Generalized Empirical Likelihood, and Time Series”
- 09/11 *Francesca Mameli, Gerardo Marletto*, “Can national survey data be used to select a core set of indicators for monitoring the sustainability of urban mobility policies?”
- 09/10 *Emanuela Marrocu, Raffaele Paci*, “They arrive with new information. Tourism flows and production efficiency in the European regions”
- 09/09 *Oliviero A. Carboni*, “An Empirical investigation of the Determinants of R&D Cooperation”
- 09/08 *Fabiano Schivardi, Eliana Viviano*, “Entry Barriers in Retail Trade”
- 09/07 *Rinaldo Brau, Carlo Carraro*, “The Design of Voluntary Agreements in Oligopolistic Markets”
- 09/06 *Francesca Mameli, Gerardo Marletto*, “A participative procedure to select indicators of sustainable urban mobility policies”
- 09/05 *Claudio Detotto, Manuela Pulina*, “Does more crime mean fewer jobs? An ARDL model”
- 09/04 *Francesco Pigliaru*, “Persistent Regional Gaps and the Role of Social Capital: Hints from the Italian Mezzogiorno’s case”
- 09/03 *Giovanni Sulis*, “Wage Returns to Experience and Tenure for Young Men in Italy”
- 09/02 *Guido Ferrari, Giorgio Garau, Patrizio Lecca*, “Constructing a Social Accounting Matrix for Sardinia”
- 09/01 *Giorgio Garau, Patrizio Lecca, Lucia Schirru*, “Does Deflation Method Matter for Productivity Measures?”
- 08/23 *Barbara Dettori, Emanuela Marrocu, Raffaele Paci*, “Total factor productivity, intangible assets and spatial dependence in the European regions”
- 08/22 *Fabio Cerina, Sauveur Giannoni*, “Pollution Adverse Tourists and Growth”
- 08/21 *Carina Hirsch, Giovanni Sulis*, “Schooling, Production Structure and Growth: An Empirical Analysis on Italian Regions”
- 08/20 *Fabio Cerina, Francesco Mureddu*, “Agglomeration and Growth with Endogenous Expenditure Shares”
- 08/19 *Dimitri Paolini*, “Screening and short – term contracts”

Finito di stampare nel mese di Febbraio 2010  
Presso **studiografico&stampadigitale Copy Right**  
Via Torre Tonda 8 – Tel. 079.200395 – Fax 079.4360444  
07100 Sassari

[www.crenos.it](http://www.crenos.it)

ISBN 978-88-84-67-569-9



9788884675699