

A limited area model intercomparison on the “Montserrat-2000” flash-flood event using statistical and deterministic methods

S. Mariani¹, M. Casaioli¹, C. Accadia¹, M. C. Llasat², F. Pasi³, S. Davolio⁴, M. Elementi⁵, G. Ficca⁶, and R. Romero⁷

¹Agenzia per la Protezione dell’Ambiente e per i Servizi Tecnici, APAT, Rome, Italy

²Departament d’Astronomia i Meteorologia, Facultat de Física, Universitat de Barcelona, Barcelona, Spain

³Laboratorio di Meteorologia e Modellistica Ambientale, LaMMA, Sesto Fiorentino, Florence, Italy

⁴CNR-Istituto di Scienze dell’Atmosfera e del Clima, CNR-ISAC, Bologna, Italy

⁵Agenzia Regionale Prevenzione e Ambiente dell’Emilia-Romagna, Servizio Idro Meteo, ARPA-SIM, Bologna, Italy

⁶Servizio Agrometeorologico Regionale per la Sardegna, SAR, Sassari, Italy

⁷Departament de Física, Universitat de les Illes Balears, Palma de Mallorca, Spain

Received: 2 February 2005 – Revised: 20 April 2005 – Accepted: 3 May 2005 – Published: 1 August 2005

Part of Special Issue “HYDROPTIMET”

Abstract. In the scope of the European project Hydroptimet, INTERREG IIIB-MEDOCC programme, limited area model (LAM) intercomparison of intense events that produced many damages to people and territory is performed. As the comparison is limited to single case studies, the work is not meant to provide a measure of the different models’ skill, but to identify the key model factors useful to give a good forecast on such a kind of meteorological phenomena. This work focuses on the Spanish flash-flood event, also known as “Montserrat-2000” event.

The study is performed using forecast data from seven operational LAMs, placed at partners’ disposal via the Hydroptimet ftp site, and observed data from Catalonia rain gauge network. To improve the event analysis, satellite rainfall estimates have been also considered.

For statistical evaluation of quantitative precipitation forecasts (QPFs), several non-parametric skill scores based on contingency tables have been used. Furthermore, for each model run it has been possible to identify Catalonia regions affected by misses and false alarms using contingency table elements. Moreover, the standard “eyeball” analysis of forecast and observed precipitation fields has been supported by the use of a state-of-the-art diagnostic method, the contiguous rain area (CRA) analysis. This method allows to quantify the spatial shift forecast error and to identify the error sources that affected each model forecasts.

High-resolution modelling and domain size seem to have a key role for providing a skillful forecast. Further work is needed to support this statement, including verification using a wider observational data set.

1 Introduction

Intense hydro-meteorological events can be the cause of many different risk conditions for society and territory. Advances in the forecasting capabilities and increased understanding of such phenomena can be achieved by the optimization of the current hydro-meteorological forecasting techniques. In particular, a strong exchange among deterministic case-study research, real-time monitoring of local observation data and the use of statistical and diagnostic methodologies for forecasting model validation and intercomparison is required.

In this context, the activity of the EU project Hydroptimet (INTERREG IIIB-MEDOCC programme) had as focal points the improvement of the hydro-meteorological forecasting methodologies and the knowledge exchange among project partners. With these objectives in mind, four case studies of intense hydro-meteorological events, which affected in the recent past the north-western Mediterranean area causing many damages, have been selected. In fact, these events, which had different physical and meteorological characteristics, had been chosen to perform an intercomparison study using the numerical model forecasts available at partners’ centers.

Among the four selected case studies, this work focuses on the “Montserrat-2000” flash-flood event occurred on 9–10 June 2000 in northeastern Iberian Peninsula (Llasat et al., 2003). The case study has been chosen for its characteristics: a flash-flood event due to a mesoscale Mediterranean cyclone, with primary role played by the mesoscale forcing mechanisms typically acting in the Mediterranean Basin (dynamical forcing enhanced by orography and wet processes).

Precipitation forecast fields of seven hydrostatic and non-hydrostatic limited area models (LAMs) have been compared

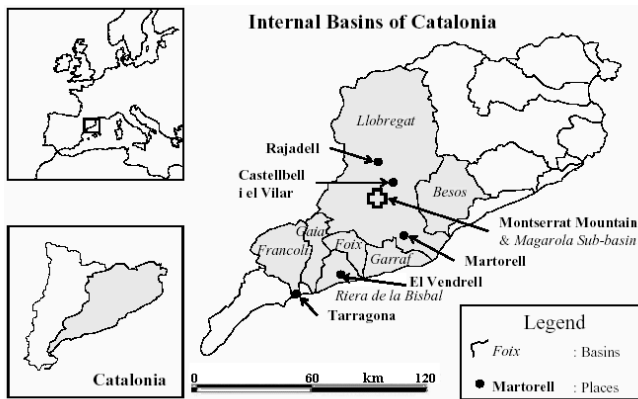


Fig. 1. Catalonia (Spain) internal basins (from Llasat et al., 2003).

with the precipitations observed at Catalonia rain gauge stations. The selected models have different horizontal grid size, ranging from 2 km to 10 km. As the intercomparison results could be affected by the grid size differences, a remapping procedure (Accadia et al., 2003; Baldwin, 2000) has also been applied to perform an intercomparison on a common 10-km grid. This grid-to-grid transformation has been preferred to other techniques, since it conserves, to a desired degree of accuracy, the total forecast precipitation of the native grid.

Model validation, both in a statistical (i.e., non-parametric skill scores; contingency table element analysis) and in a deterministic (i.e., “eyeball” verification, quantitative comparison of observed and forecast fields over hydrological basins; object-oriented analysis) approach, has been performed. Such a single-case investigation could provide insight on physical mechanisms related to forecast errors, thus giving hints about eventual drawbacks of the models and possible strategies for their improvement.

The paper is organized as follows. Section 2 briefly describes the “Montserrat-2000” event. Section 3 describes observed and forecast precipitation datasets. Statistical and deterministic methodologies are presented in Sect. 4. Results are described in Sect. 5. Conclusions and final remarks are in Sect. 6.

2 Event description

The selected case study occurred in Catalonia (Spain; see Fig. 1 for geographical details) on 9–10 June 2000. The maximum rainfall was recorded over the Llobregat basin (Fig. 1), on the Montserrat Mountain, with 224 mm, more than 80% recorded in less than 6 h. As a consequence of this heavy and sudden rainfall, some flash floods were produced in different Llobregat tributaries and wadis that are normally dry.

A similar problem arose over the Tarragona coast (Fig. 1), where some wadis that cross the Vendrell village were overflowed producing great damages, due to the heavy rainfalls along all its way, with a maximum of 134 mm over the nearest mountains in less than 3 h.

Those rainfalls were produced by a squall line that moved slowly from the SW to the NE, remaining stationary over different places for two hours or more. Then the system, composed of different convective cells, remained over the Tarragona basins between 12 p.m. and 3 a.m. local time, and over the mountains of the center of Catalonia (mainly over the Montserrat Mountain) between 4 a.m. and 7 a.m. local time.

The meteorological analysis showed a great convective instability in low levels due to the presence of very wet and warm air, favored by the previous anticyclonic situation and a warm advection from the South. A surface low placed in front of Catalonia gave the necessary water vapor convergence and triggered the first vertical movements, which were strengthened by the orography. The flow from the SE that impinged perpendicularly over some mountain ranges helped the vertical forcing.

In the medium and high troposphere a cold depression from the NW had moved the previous day over the Iberian Peninsula, reaching the Catalonia region at 9 p.m. local time. Then, an overlapping between this cold depression and the surface low was produced, favoring the instability development. The radiosounding ascents corroborated this situation; the Convective Available Potential Energy was of 1866 J/kg (9 June, 12 a.m. GMT) over Palma de Mallorca (the Barcelona radiosounding did not reach 500 hPa due to the strong wind). It is important to remind that values above 1500 J/kg reveal a great possibility of having severe weather or strong rainfalls.

In this event, heavy rainfalls and strong winds (severe weather) were produced over Catalonia. The windstorm affected mainly the city of Barcelona.

3 Models and datasets

3.1 The selected models

The simulations were performed using the following limited area models:

- the BOlogna Limited Area Model (BOLAM) from Servizio Agrometeorologico Regionale (SAR) for Sardinia region;
- the BOLAM and “MOdello LOcale” on “H” coordinates (MOLOCH) from Istituto di Scienze dell’Atmosfera e del Clima-Consiglio Nazionale delle Ricerche (ISAC-CNR);
- the QUADRICS BOlogna Limited Area Model (QBOLAM) from Agenzia per la Protezione dell’Ambiente e per i Servizi Tecnici (APAT);
- the Regional Atmospheric Modeling System (RAMS) from Laboratorio di Meteorologia e Modellistica Ambientale (LaMMA);
- the Fifth Generation Mesoscale Model (MM5) from Departament de Física, Universitat de les Illes Balears (UIB);

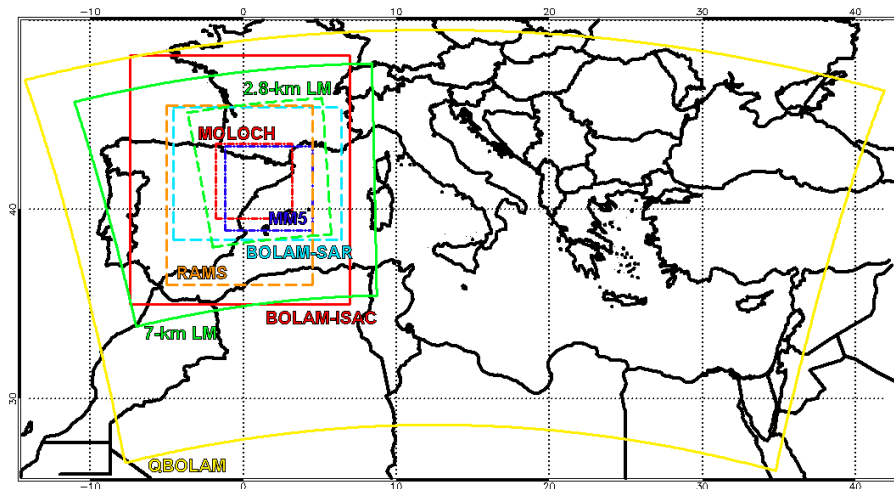


Fig. 2. Extension domains for the selected limited area models. Domains cover from entire Mediterranean Basin to Catalonia region. Solid yellow line: QBOLAM. Solid green line: 7-km LM. Solid red line: BOLAM from ISAC-CNR. Dashed sky-blue line: BOLAM from SAR. Dashed orange line: RAMS. Dashed green line: 2.8-km LM. Dash-dotted blue line: MM5. Dash-dotted red line: MOLOCH.

- the Lokal Modell (LM) from Agenzia Regionale Prevenzione e Ambiente of Emilia-Romagna region-Servizio Idro Meteo (ARPA-SIM).

Models are non-hydrostatic, excepted BOLAM and QBOLAM, with horizontal grid size ranging from 2 km to 10 km, and domain size covering from Catalonia to the Mediterranean Basin (Fig. 2). The models also differ for the parameterization schemes employed, and about initial and boundary conditions. In the operational configuration, these are provided by ECMWF analysis and forecast for all models, except LM (DWD data) and MM5 (NCEP data).

However, for the Hydroptimet case studies, LM and MM5 simulations have been also performed using ECMWF data as initial and boundary conditions. Most of the models are initialized with the 00:00 UTC ECMWF analysis of day 9 June, and take boundary conditions from the ECMWF forecast initialized with the same analysis. The ISAC model chain differs, since boundary conditions are taken from the ECMWF forecast started from the 12:00 UTC analysis of day 8 June. These are also the boundary conditions for QBOLAM run, but in this case the lower-resolution run is started 12 h in advance, using 12:00 UTC ECMWF analysis of day 8 June as initial condition (cf. Table 1).

For each model only one run, starting from 00:00 UTC, 9 June 2000, is included in the intercomparison. Forecast range is 36 h, except QBOLAM whose forecast range is 48 h. Nevertheless, for the intercomparison study only the first 36 h of the QBOLAM simulation are considered here.

3.1.1 BOLAM-ISAC and MOLOCH

BOLAM, used for scientific purposes at ISAC-CNR, is a primitive equation, sigma-coordinate, hydrostatic model, with wind components, potential temperature, specific humidity and surface pressure as dependent variables. Vari-

ables are distributed on a non-uniformly spaced Lorenz grid. The horizontal discretization uses geographical coordinates, with latitudinal rotation on an Arakawa C-grid. Time integration is based on a split-explicit integration scheme (Malguzzi and Tartaglione, 1999). This model version implements a Forward-Backward (FB) time integration scheme (Mesinger, 1977) for the term describing gravity waves and a Weighted Average Flux (WAF) scheme for the three-dimensional advection. A detailed description of the dynamics and numerical schemes can be found in Buzzi and Foschini (2000).

The water cycle for stratiform precipitation is described by means of five prognostic variables (cloud ice, cloud water, rain, snow, graupel), with a simplified approach similar to that proposed by Schultz (1995). Deep convection is parameterized using the Kain-Fritsch (1990) convective scheme with some modifications, including those suggested by Spencer and Stensrud (1998) to improve the effect of the downdraft. The Ritter-Geleyn (1992) scheme is employed for parameterization of radiation. The orography used in the simulations is derived from interpolation and smoothing of the 1-km resolution GLOBE Digital Elevation Model.

In the 36-h coarse-resolution Spanish run (160×160 grid points with spacing of 0.2° in rotated coordinates and 38 vertical levels) the initial condition is supplied from the ECMWF analysis at 00:00 UTC, 9 June 2000, while boundary conditions are supplied from ECMWF forecasts from 12:00 UTC of the day before (12:00 UTC, 8 June 2000). Sequential self-nesting has been employed for the high-resolution experiment run, with grid spacing of 0.06° (see Table 1).

MOLOCH is a non-hydrostatic high-resolution model that integrates the fully compressible set of equations with prognostic variables (pressure, temperature, humidity, horizontal and vertical velocity components) represented on the lat-lon rotated, Arakawa C-grid (Table 1). Hybrid terrain following

Table 1. Summary of models’ configuration for the Spanish case study. Each model is nested into a coarse-grid model referred as father model. Father’s initial and boundary conditions are also included: unless it is differently specified, father’s boundary condition run starts from the analysis indicated under “Father’s initial conditions”. For each model simulation the forecast initial time is 00:00 UTC of 9 June 2000. Forecast range is 36 h for all models, except QBOLAM (48 h).

Model/ Partner	Grid size	Initial conditions	Boundary conditions	Domain size	Lev.	Father model	Father initial cond.	Father boundary cond.
BOLAM ISAC	0.06°	0.2°BOLAM nesting	0.2°BOLAM every 1.5 h	220×240	44	0.2° BOLAM	00:00 UTC 9 Jun. ECMWF AN	12:00 UTC 8 Jun. ECMWF FC √ 6 h
BOLAM SAR	0.05°	0.18°BOLAM nesting	0.18°BOLAM every 1 h	180×180	42	0.18° BOLAM	00:00 UTC 9 Jun. ECMWF AN	ECMWF FC every 6 h
LM ARPA-SIM	7 km	00:00 UTC 9 Jun. ECMWF AN	ECMWF FC every 3 h	208×190	35	ECMWF		
LM ARPA-SIM	2.8 km	7-km LM nesting	7-km LM every 1 h	250×290	35	7-km LM	00:00 UTC 9 Jun. ECMWF AN	ECMWF FC every 6 h
MOLOCH ISAC	0.02°	0.06°BOLAM nesting	0.06°BOLAM every 1 h	220×220	50	0.06° BOLAM	00:00 UTC 9 Jun. 0.2°BOLAM	0.2°BOLAM every 1.5 h
QBOLAM APAT	0.1°	0.3°QBOLAM nesting	0.3°QBOLAM every 3 h	386×210	40	0.3° QBOLAM	12:00 UTC 8 Jun. ECMWF AN	ECMWF FC every 6 h
RAMS LaMMA	2 km	8-km RAMS nesting	8-km RAMS every 1 h	501×501	36	8-km RAMS	00:00 UTC 9 Jun. ECMWF AN	ECMWF FC, √ 6 h + inner-dom. nudg. √ 12 h
MM5* UIB	6 km	18-km MM5 two-way nesting	18-km MM5 two-way nesting √ 3 h	82×82	24	*6-km MM5 two-way nest. to 18-km MM5 that is two-way nest. to 54-km MM5. 54-km MM5 is initialized w. 00:00 UTC 9 Jun. ECMWF AN and ECMWF FC √ 6 h		

coordinates, relaxing smoothly to horizontal surfaces away from the earth surface, are employed. Model dynamics is integrated in time with an implicit scheme for the vertical propagation of sound waves, while explicit, time-split schemes are implemented for the remaining terms. Three-dimensional advection is computed using the WAF scheme. Horizontal fourth order diffusion and divergence damping are included to prevent energy accumulation on the shorter space scales.

Some physical schemes (radiation, surface turbulent fluxes and vertical diffusion, soil water and energy balances) are provisionally similar to those of BOLAM, while the micro-physical scheme is new and partly based on the parameterization proposed by Drofa (2003). The physical processes determining the time tendency of specific humidity, cloud water/ice and precipitating water/ice are divided into “fast” and “slow” ones. Fast processes involve transformations between specific humidity and cloud quantities and are computed every advection time step. Fall of precipitation is computed, as a slow process, with the stable and dispersive backward-upstream scheme with fall velocities depending on concentration. Temperature is updated by imposing exact entropy conservation at constant pressure. The parameterization of the dry and moist convective adjustment is not considered, allowing the model to explicitly simulate atmospheric convection.

The model performance was evaluated by simulating some Mesoscale Alpine Programme (MAP) case studies (Buzzi et al., 2004), characterized by heavy precipitation. MOLOCH is nested into the higher resolution BOLAM simulations, with lateral boundary values updated every hour (cf. Table 1).

3.1.2 BOLAM-SAR

Also for the Sardinia Meteorological Service (SAR), numerical simulation of the selected case studies have been carried out using a version of the limited area model BOLAM, which is operationally used at SAR. As mentioned above, BOLAM is a primitive equation model resolved on a horizontal Arakawa C grid (rotated) and on vertical sigma levels (cf. Table 1). Time integration and parameterization schemes are the same as in BOLAM-ISAC, except for time integration of horizontal and vertical advection terms, which is accomplished with a Forward-Backward Advection Scheme (FBAS; Malguzzi and Tartaglione, 1999) instead of WAF.

For each case study two runs of the model are performed. The first run is obtained through a direct nesting of the 0.18° BOLAM into the ECMWF global model. The second run is obtained nesting the 0.05° BOLAM into the 0.18° BOLAM using the aforementioned output as initial and boundary conditions. Moreover, two simulations have been done for the Spanish case changing the initial condition.

Firstly, in the 0.18° BOLAM the initial condition is supplied from the ECMWF analysis at 12:00 UTC of 8 June 2000. Thus, for the 0.05° BOLAM the initial condition is the 12 h BOLAM father forecast. Unfortunately, from this analysis the “Montserrat-2000” event was not forecast.

For the second experiment, the 0.18° BOLAM the initial condition is supplied from the ECMWF analysis at 00:00 UTC of 9 June 2000 and the initial condition for the 0.05° BOLAM is now the 0.18° BOLAM father analysis (cf. Table 1). From this analysis the “Montserrat-2000” event was forecast, but underestimated. This simulation is the one included in the intercomparison.

3.1.3 Lokal Modell

LM, the LAM of the Consortium for Small-scale Modelling (COSMO), is the meteorological model used by ARPA-SIM. LM, originally developed at the DWD (Offenbach, Germany), is based on the primitive hydro-thermodynamical equations describing compressible non-hydrostatic flow in a moist atmosphere without any scale approximations. The use of non-hydrostatic compressible (i.e. unfiltered) dynamical equations allows to avoid restrictions on the spatial scales and on the domain size. The equation of the vertical moment is not approximate, so that it can describe much better those phenomena for which it is important to take into account the vertical velocity (for example convective storms, sea and mountain breezes). The basic equations are written in advection form and the continuity equation is replaced by a prognostic equation for the perturbation pressure (i.e. the deviation of pressure from the reference state). The model equations are solved numerically using the traditional finite difference method.

The meteorological center of Emilia-Romagna, ARPA-SIM, has been using LM as the operational forecast model since 2001; LM is run twice a day (at 00:00 UTC and 12:00 UTC) for 72 h with a spatial horizontal resolution of 7 km and 35 levels in the vertical. The initial and boundary conditions for LM are obtained by interpolating respectively the values of the analysis and of the forecasts supplied by the global model of the DWD (one-way nesting). The boundary conditions are provided to the LAM every hour. Mesoscale data assimilation is also applied, using a nudging technique.

LM simulations of the Hydroptimet case studies have been run in a slightly different configuration (cf. Table 1). The initial conditions and the boundary conditions have been supplied by the global model of ECMWF. The model has been run at two horizontal resolutions, 7 and 2.8 km. The 7-km LM is nested on the ECMWF global model, while the 2.8-km version of LM is nested on the 7-km one. The initial and boundary conditions for the 2.8-km run are, then, provided by the 7-km run of LM. Both the 7-km and the 2.8-km LM simulations use the Tiedtke parametrisation scheme for cumulus convection.

3.1.4 MM5

MM5 model is running for research purposes at the UIB-Meteorological Group. Usually, the NCEP grid analyses, with a horizontal resolution of 2.5° (in latitude-longitude coordinates), are employed at UIB to initialize the model and provide boundary conditions. The MM5 model grid is defined using the Lambert-Conformal Map Projection and therefore the NCEP analyses are interpolated on the MM5 grid.

Three mesoscale domains, interacting with each other, have been defined. For each domain, the origin of the coordinates is situated in the down-left corner of the grid. The grid size spacing is 54 km (domain 1), 18 km (domain 2) and 6 km (domain 3), each with 82 grid points both in longitude and latitude direction and 24 vertical levels. The ratio between the size of one domain and its outer domain is 3:1, because a two-way interaction it has been applied. In fact, the 18-km MM5 is two-way nested to the 54-km MM5, and the 6-km MM5 is two-way nested to the 18-km MM5.

The outer domain (domain 1) is centered in the northeast of Spain at geographical coordinate (39.0° N, 0.0° E) and measures 4374×4374 km. Domain 2 is approximately centered over the Catalonia region, whereas the inner domain (domain 3) is approximately centered over Tarragona (see Fig. 2 for the 6-km domain extension).

For the control experiments, it has been used NCEP analysis every 12 h (initial conditions and the rest of the time steps). The 54-km MM5 outputs are every 6 h, whilst for the other two domains outputs are every 3 h. Moreover, full physics is used and a Kain-Fritsch scheme is applied to parameterize convection for the first domain, whereas no convective parameterization is present over the two inner domains.

Simulations using analysis and forecasts of the ECMWF have been also run, but results are not so good as those of the control experiment. This model configuration is used for the intercomparison study. The 54-km MM5 is initialized with ECMWF analysis at 00:00 UTC of 9 June 2000 and ECMWF forecast every 6 h as initial and boundary conditions, respectively (cf. Table 1).

3.1.5 QBOLAM

QBOLAM is a parallel version of the hydrostatic, primitive-equation, atmospheric limited area model BOLAM (Buzzi et al., 1994) implemented on a 128-processor QUADRICS APE-100 machine. It runs operationally at APAT in Rome, as a part of POSEIDON sea wave and tidal forecasting system (Speranza et al., 2004), which includes also a Wave Model (WAM), a Princeton Ocean Model (POM) nested on a Finite Element Model of the Venice Lagoon (VL-FEM) in cascade with the QBOLAM output.

Equations are discretized on a horizontal Arakawa-C grid, rotated in order to minimize grid anisotropy (Buzzi et al., 1998), and on a vertical sigma-level Lorenz (1960) scheme. As in BOLAM-SAR, the integration scheme employs FB to

describe gravity waves and FBAS for the horizontal and vertical advection terms. A fourth-order diffusion and a second-order divergence damping are also applied.

Due to massive parallelization issues, some parameterization schemes are simpler than in other BOLAM versions: they include analytic formulae (Louis et al., 1982), based on Monin-Obukhov similarity theory, to represent boundary-layer fluxes; a simplified radiation scheme (Page, 1986; Ruti et al., 1997); convection parameterization based on the Kuo (1974) scheme. A three-layer soil model provides lower boundary conditions.

For the case-study simulations, the operational configuration is used. The model is run on two one-way nested grids. The outer grid (162×98 points) has a horizontal spacing of 0.3° in rotated coordinates, centered at the point of geographical coordinate (38.5° N, 12.5° E), with an approximate extension of 5300×3200 km, and 40 vertical sigma levels. Initial conditions are provided by ECMWF analysis; boundary conditions are given by the ECMWF forecast initialized with the same analysis.

The inner domain (386×210 points) has a horizontal spacing of 0.1° with an approximate extension of 4300×2300 km (the other parameters are the same as above). The operational, 60-h run starts daily with the 12:00 UTC analysis; however, the inner domain run starts 12 h later (spinup time) so that the higher resolution run has a 48-h forecast range, starting from 00:00 UTC of the day after the analysis. This run design was preserved in the case-study experiments.

3.1.6 RAMS

The RAMS model, operating at LaMMA since 1999 (Pasqui et al., 2000) integrates standard non-hydrostatic Reynolds-averaged primitive equations, compressible and time-split on a horizontal rotated (polar-stereographic transformation) and a vertical terrain-following coordinate. The physical package of the model describes an atmospheric turbulent diffusion processes according with the Mellor-Yamada scheme, a cloud microphysics parameterization, a modified Kain-Fritsch type cumulus parameterization, the Harrington radiative transfer parameterization short and long wave scheme and the Land Ecosystem Atmosphere Feedback (LEAF) scheme for soil-vegetation-atmosphere energy and moisture exchanges.

The cloud microphysics scheme (Walko et al., 1995; Meyers et al., 1997) is a bulk microphysics representation of each hydrometeor category. This physics-based scheme emphasizes individual microphysical processes rather than the statistical end result of atmospheric systems; it is suitable to be applied to any kind of cloud (convective, stratiform, tropical etc.). The surface model (LEAF; Walko et al., 2000) evaluates fluxes of energy, water vapor, and momentum between atmosphere and surface solving heat and water balance equations for multiple soil layers, multiple snow cover layers, vegetation, and canopy air. LEAF uses a mosaic approach to subdivide each surface grid cell into multiple land use types or “patches”. The LEAF model includes the effects

of freezing and melting, the temporary water and snow cover, the vegetation and the canopy air. The precipitation produced by both convective parameterization and bulk microphysical scheme, within the column grid, falls down on the vegetation coverage, producing a moisture fluxes and energy due to the different hydrometeors.

The simulation design is based on a two nested grids configuration at 8 and 2 km of grid spacing, respectively. Six-hourly ECMWF global model analysis fields provide both initial and boundary conditions on the outer grid, using both a lateral nudging, on a strong 6 h time scale, and an inner-domain light nudging on a 12 h time scale. This sort of “spectral nudging technique” is aimed to force the model with analyzed fields and, at the same time, let it develop its own dynamics in the domain far from lateral boundaries. Then, outer grid forecast provides one-way forcing for the 2-km grid spacing inner domain. Boundary conditions are provided every 1 h only with a lateral nudging.

Over both grids, 36 vertical levels are present, with a stretched resolution from 50 m, near the surface, to 1100 m (cf. Table 1). In order to provide a better description of air-sea fluxes, observed weekly sea surface temperature fields at 9 km of resolution from AVHRR (NOAA) have been used. Initial soil temperature and moisture are set accordingly to available observed data for the interest period. A special precipitation microphysical scheme setting, originally developed in the Hydroptimet framework, has been used: as one of the most critical microphysics scheme parameters is the “cloud condensations nuclei” (CCN) concentration for each hydrometeor categories, a special set-up has been chosen according to the mean total dust load, over the area, described by the Aerosol Index from TOMS satellite. In details, we define over the interest area three different dust load concentration, namely low, moderate and high, with respect to the TOMS AI observed values. These conditions are direct linked with the CCN concentration. For each reference dust load condition we provide “the best choice”, of microphysical parameter settings for the RAMS simulation, obtained through analyzed case studies simulations (see for details Pasqui et al., 2004). Because not only the CCN concentration has a direct impact on precipitation, a “best” shape size distribution choice for each hydrometeors categories has been provided as well.

3.2 Observed and forecast datasets

The verification data set includes 5-min rain gauge observed precipitations over Catalonia, 30-min satellite data, and 1-h model forecast precipitation fields for 9–10 June 2000. For the intercomparison study, forecast and observed precipitations have been accumulated at 3, 6 and 12 h over the entire event period.

In Fig. 3 rain gauge observations accumulated on 36 h, starting from 00:00 UTC of 9 June 2000, are presented. The dense rain gauge network consists of 126 stations, covering an area of about 17 000 km². Nevertheless, in order to have an observed rainfall analysis less sensitive to the grid box

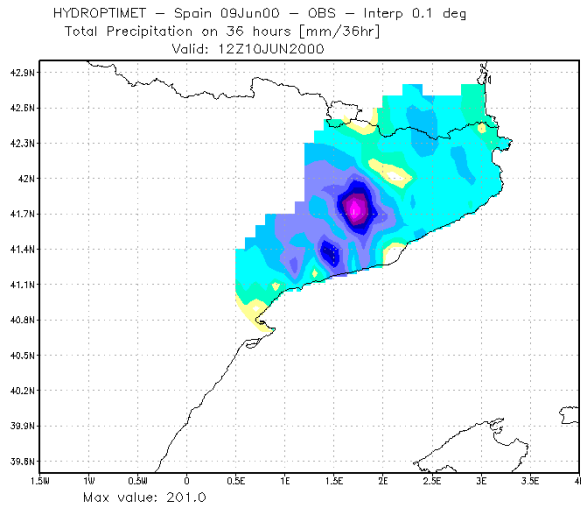


Fig. 3. Precipitation observed by the Catalonia rain gauge network during the “Montserrat-2000” event. Rainfall was accumulated from 00:00 UTC, 9 June to 12:00 UTC, 10 June 2000.

spacing selected for the intercomparison, a two-pass Barnes objective analysis scheme has been applied (Barnes, 1964, 1973; Koch et al., 1983). This procedure assigns a gaussian weight to each observation as a function of the distance between rain gauge location and grid box center. The first pass produces a first guess gridded analysis, whereas the second pass increases the amount of detail from the previous one.

Further extension of the data set includes satellite rainfall estimates interpolated on a grid with an equal spacing of 0.2 degrees for both coordinates (cf. Fig. 4). These estimates have been provided by LaMMA laboratory, which has implemented an operational chain that produces real-time half-hourly instantaneous rainfall maps. The procedure, operating in an autonomous, operational mode, is based on a blended technique (Turk et al., 2000a,b) that dynamically correlates brightness temperatures as measured by geostationary sensors and instantaneous precipitation levels, as computed by MW passive radiometer data (Ferraro and Marks, 1995; Ferraro, 1997), by means of a statistical correlation (Crosson et al., 1996). The continuous streaming of geostationary and MW satellite data has been realized from ingesting METEOSAT data from the local receiving system in one case, and downloading SSM/I data from an archive with near real-time data (i.e., SAA archive) in the other case.

The retrieved rainfall pattern (Fig. 4) does not show a good agreement with the rain gauge observations; in particular, slight or no precipitation is estimated over the Llobregat basin, where the sharp rainfall peak, which produced the heaviest damages, is observed (Fig. 3). Actually, a weak rain band is present in Fig. 4, but with a strong south-easterly shift.

An error in the satellite estimate field can arise from a calibration error or a time shift error in the retrieval algorithm; whereas a large-scale error in the rain gauge measurements is quite unlikely. For this reason, it has been decided to not

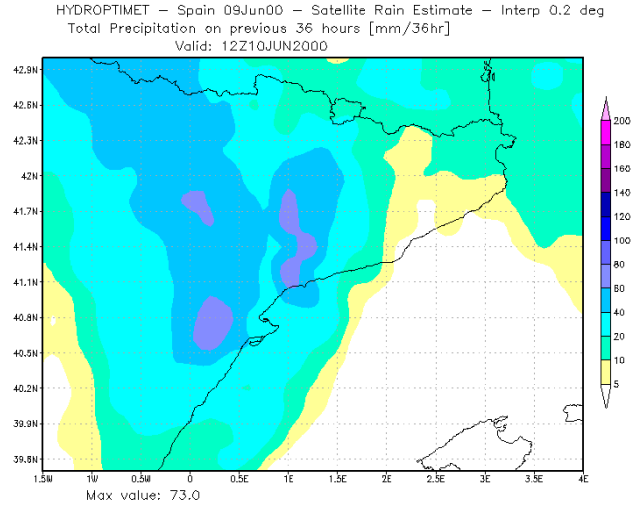


Fig. 4. 36-h satellite rainfall estimate, from 00:00 UTC, 9 June to 12:00 UTC, 10 June 2000.

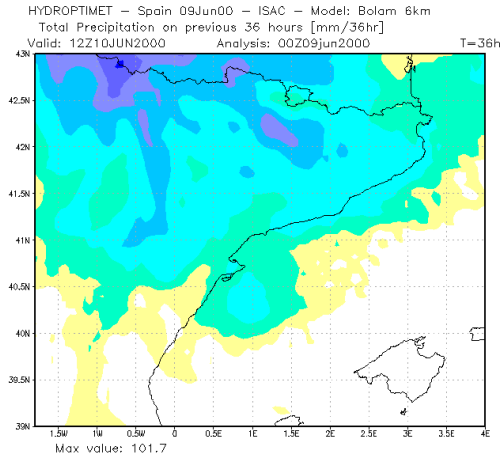
use the satellite rainfall estimate for quantitative model verification.

Another possible observational data source is the weather radar, located near Barcelona, of the Catalan Meteorological Service. Suitable algorithms for quantitative rainfall estimation have been developed (Rigo and Llasat, 2004), but their calibration needs further work and it is out of the scope of the present paper.

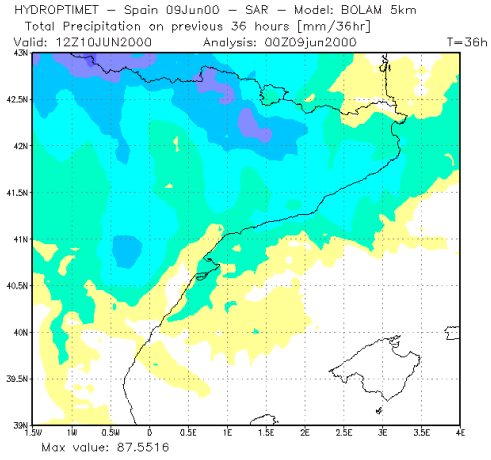
In Fig. 5 36-h precipitation forecasts predicted by the selected models over their own native grids are presented.

Since the models differ in the horizontal grid size, the intercomparison results may be sensitive to these differences. In fact, statistical intercomparison tends to be highly sensitive to forecast displacement error, especially when verifying on high-resolution grids or on a short accumulation time. Moreover, large errors are also expected when using a single rain gauge measure as a proxy of the average precipitation amount over an even very small area (Cherubini et al., 2002). Having more rain gauges per grid point is the most effective way to deal with representation error, and this is done performing the statistical validation over a relatively coarse grid (Mass et al., 2002). Hence, model runs have been verified on a common 10-km grid by means of the remapping grid-to-grid transformation (Accadia et al., 2003; Baldwin, 2000).

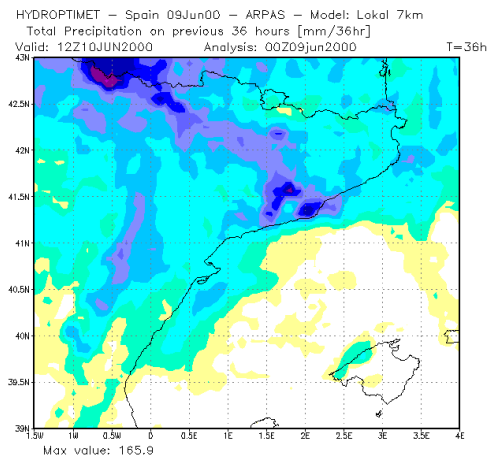
Although both procedures may change in a statistical way skill score results (Accadia et al., 2003), remapping, used operationally by the NCEP-Environmental Modeling Center, is better than a simple bilinear interpolation (used, for example, by ECMWF). First of all, bilinear interpolation treats grid-point precipitation values as defined at points, whilst remapping considers gridpoint values as grid-box values. Furthermore, bilinear interpolation may not be desirable for precipitation, because it results in smoothing of the precipitation field. In addition, at variance with remapping, bilinear interpolation does not conserve, to a desired degree of accuracy, the total precipitation forecast over the native grid.



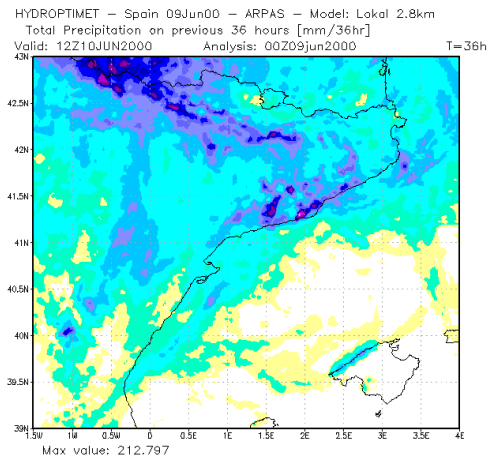
(a) 0.06° BOLAM-ISAC



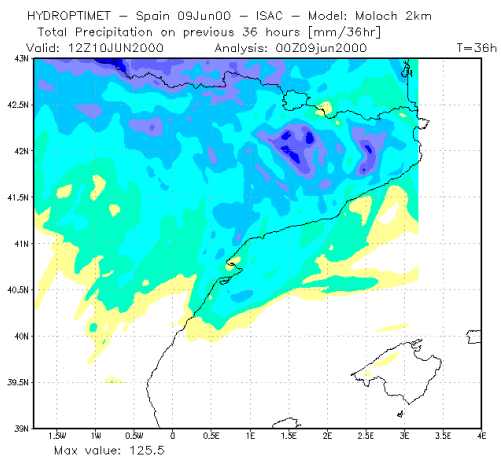
(b) 0.05° BOLAM-SAR



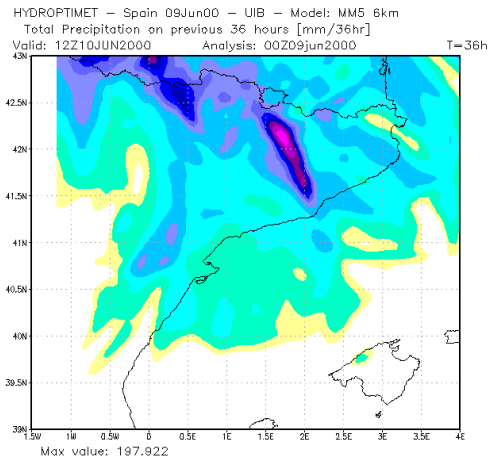
(c) 7-km LM



(d) 2.8-km LM



(e) 0.02° MOLOCH



(f) 6-km MM5

Fig. 5. Precipitation forecast by the selected LAMs over their own native grids. Rainfall was accumulated from 00:00 UTC, 9 June to 12:00 UTC, 10 June 2000.

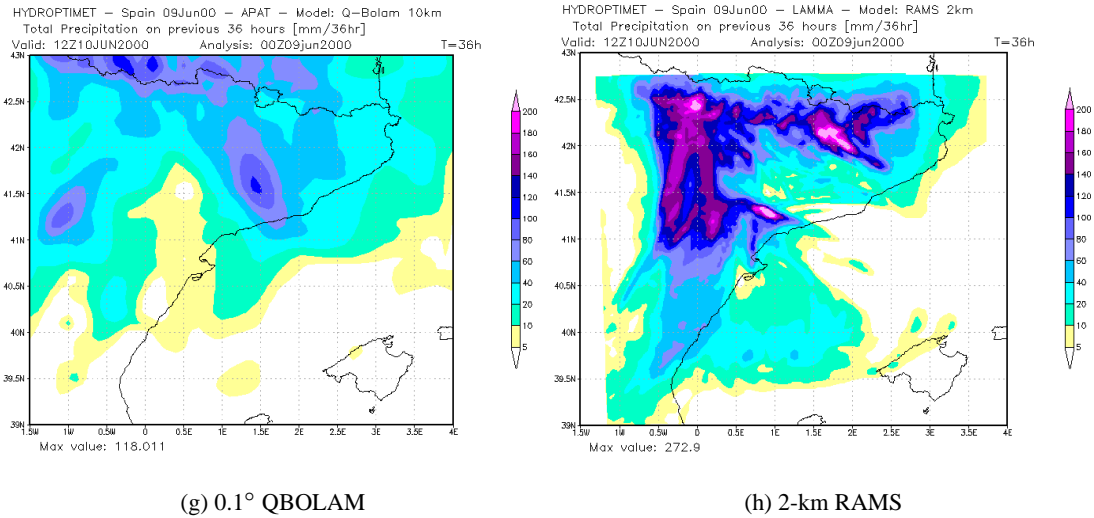


Fig. 5. Continued.

4 Statistical and deterministic methodologies

To give a quantitative assessment about model skill in predicting the event, a statistical verification by means of widely-used non-parametric skill scores has been performed (Wilks, 1995; Schaefer, 1990; Hanssen and Kuipers, 1965; Mason, 1989).

These scores are tallied up on 2×2 contingency tables (Table 2), which summarize in a categorical way possible combinations of forecast and observed events above or below a given precipitation threshold. Hence, for each selected threshold, four categories are defined: hits; false alarms; misses and correct non-rain forecasts (see a , b , c and d in Table 2, respectively). The sum of these four category elements, which is constant for each threshold, gives the sample size, that is the total number of forecast/observation pairs over the verification period.

In order to have skill scores less sensitive to small change into contingency table population, they have been calculated on a sum of contingency tables (Hamill, 1999). In this case, since only one event is considered (36 h), the number of tables depends on the accumulation time. For example, on a 12-h accumulation basis, categorical scores are tallied up on three contingency tables.

The BIA score, or bias score, (Wilks, 1995) is the ratio between the frequency of yes forecast and the frequency of yes observed. It is defined by:

$$BIA = \frac{a + b}{a + c}. \tag{1}$$

A BIA equal to one means that the forecast is unbiased, that is forecasts and observations are above a selected threshold the same number of times. A BIA value greater than one indicates that the considered model overestimate the frequency of the events above a threshold (overforecasting); whereas a

Table 2. Contingency table of possible events for a selected threshold.

		Rain observed	
		Yes	No
Rain forecast	Yes	a	b
	No	c	d

BIA value less than one indicates that the model underestimate the frequency of the events (underforecasting).

The equitable threat score (ETS; Schaefer, 1990) is an accuracy measure for binary forecasts. It is a modified version of the well-known critical success index (CSI; Wilks, 1995) that takes into account, as correction, the random forecast. In fact, the ETS score is defined by:

$$ETS = \frac{a - a_r}{a + b + c - a_r}, \tag{2}$$

where a_r is the number of model hits expected from a random forecast:

$$a_r = \frac{(a + b)(a + c)}{a + b + c + d}. \tag{3}$$

An ETS score equal to one indicates a perfect forecast; whereas a value close to 0 or negative means that the model has a questionable forecasting ability.

Another useful skill score is the Hanssen and Kuipers score (HK; Hanssen and Kuipers, 1965):

$$HK = \frac{(ad - bc)}{(a + c)(b + d)}. \tag{4}$$

Unlike the ETS score, this skill score gives a measures of the accuracy both for events and nonevents (McBride and Ebert,

2000). Moreover, it is independent of the event and nonevent marginal distribution. The score ranges between -1 to 1 . A value equal to 1 means a perfect forecast, whilst a random forecast has a HK score close to zero. The HK score is equal to -1 when the number of hits and correct non-rain forecasts are both zero.

The false alarm ratio (FAR; Mason, 1989) is the ratio between the number of false alarms and the total number of yes rain forecasts. Thus, the FAR is tallied up as:

$$\text{FAR} = \frac{b}{a + b}. \quad (5)$$

As the FAR score is negative oriented, a model forecast with a FAR value close to zero is preferred (i.e., $b = 0$). Instead a FAR score equal to 1 means that all rain forecasts are false alarms (i.e., $a = 0$).

The thresholds set, depending on the accumulation time interval of forecasts and observations, includes high values, up to $80.0 \text{ mm}/12 \text{ h}$, due to the high intensity of the observed space/time rainfall peak.

Once skill score verification results are available, it could be desirable to interpret them, going back to possible factors implied in score differences. Common techniques to deal with this nontrivial task are subjective analysis and sensitivity studies.

However, a more straightforward approach, based on pattern analysis of contingency table elements, is here presented. This approach might help to characterize the model error (e.g., with respect to orography, climatology etc.) and eventually to give hints about the error sources and the worth and shortcomings of the different model runs. Contingency table elements, used to compute the aforementioned skill scores, are utilized to identify for each simulation the geographical zones in Catalonia where hits, misses and false alarms are concentrated. In fact, table elements are plotted, as a function of grid points, over the verification domain showing the spatial distribution of hits, misses and false alarms.

Furthermore, to verify the spatial pattern matching of observed and forecast precipitations and to provide more insight on the forecast error sources (displacement, volume and pattern), the contiguous rain area analysis (CRA; Ebert and McBride, 2000) has been used. This object-oriented technique is simply based on a pattern matching of two contiguous areas, defined as the observed and forecast precipitation areas, respectively, delimited by a chosen isohyet (or CRA rain rate contour).

When dealing with precipitation or, more in general, when the question is about forecast ability in matching the field maxima, the most suitable criterion to measure the spatial error is the mean square error (MSE) minimization. Moreover, following this approach it is possible to decompose the error into three component sources: the displacement, the pattern and the volume errors.

The CRA analysis is performed shifting the gridded forecast precipitation field in latitude and longitude. However, to eliminate those matches that are not statistically significant at

the 95% confidence level, a minimum correlation value between forecast and observation fields need to be achieved. This value is calculated following the approach presented by Xie and Arkin (1995) as a function of the number of effective independent comparing grid points.

The CRA methodology gives also a quantitative support to the standard “eyeball” verification of model forecasts against rain gauge observations and satellite rainfall estimates.

For hydrological purposes, a quantitative deterministic verification obtained comparing observations and forecasts over Catalonia hydrological basins has been also performed. First of all, each verification grid point has been associated to the pertaining Catalonia basin (see Fig. 1). Then, precipitations from each model simulation and rain gauge analysis have been accumulated over each basin for the 36-h period. Emphasizing the major impact areas, this analysis is quite useful in a hydrological perspective, provided the different extension of the basins is kept in mind (larger basins are less sensitive to spatial error).

5 Results and discussion

For brevity, only BIA, ETS, HK and FAR values for the 12-h accumulation time are discussed below, since values for shorter accumulation times substantially provide the same information about the skill of the model runs.

The two LM versions, MM5 and QBOLAM display the same BIA trend (Fig. 6(a)): they overestimate the frequency of very light and medium-high intensity ($40 \text{ mm}/12 \text{ h}$) rainfall, whilst they underestimate the occurrence of very strong rainfall. A similar trend, but closer to unity, is displayed by RAMS (Fig. 6(a)). The BIA scores for the two BOLAMs and MOLOCH display overestimation at low thresholds and underestimation at medium ones; whereas strong maxima are not predicted in the verification area (Fig. 6(a)). This statement is also true for the RAMS simulation. It looks like these model runs predicted diffuse precipitation in the verification area, instead of the sharp maxima shown by the observations.

For this particular case, QBOLAM ETS scores (Fig. 6(b)) are better than those of associated to the other considered simulations. This is somewhat unexpected, since it is a hydrostatic model with a relatively simple convection parameterization and 10-km horizontal grid size. Also the high-resolution LM, MM5, and RAMS display a good skill, but not for all thresholds (RAMS only at the lowest thresholds; cf. Fig. 6(b)). Finally, the other four model runs (the two BOLAMs, MOLOCH and the low-resolution LM) display a less performing behavior (Fig. 6(b)), suggesting that these simulations did not match the observed high-intensity rainfall peak.

The HK results (Fig. 6(c)) have the same trend showed by the corresponding ETS results. Note that, in general, the HK values are higher than the corresponding ETS values, since the HK formula takes into account also correct non-rain forecasts (cf. § 4).

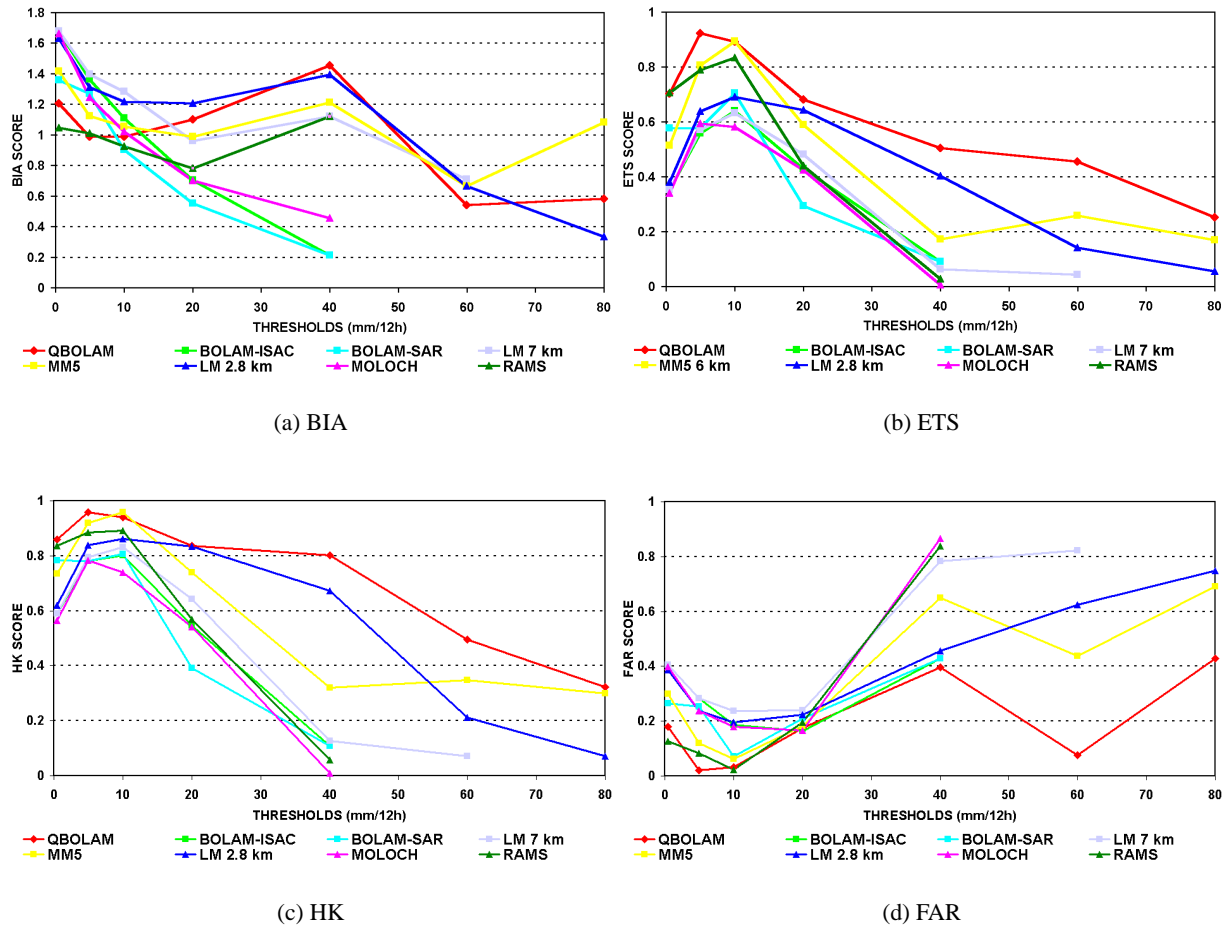


Fig. 6. 12-h BIA, ETS, HK and FAR calculated for the selected models remapped on a 10-km common grid. For graphical clarity, skill score values less or equal to zero are not plotted.

For each model, FAR shows a general descending trend for the two lowest thresholds (Fig. 6(d)), indicating a small number of false alarms with respect of the yes forecasts. This trend is followed by an expected ascending trend (see previously results), which means an increasing of the number of false alarms (Fig. 6(d)).

Moreover, to have an idea of the number of grid points where both observation and forecast are above the selected thresholds for the 12-h accumulation time, the percentage of hits, with respect to the sample size (282 pairs during the 36-h event), is presented in Table 3.

Graphical verification by means of the contingency table elements provides insight on the score differences discussed above (see Fig. 7 for misses spatial distribution).

The most skillful simulations (QBOLAM, 2.8-km LM) provide hits over all the event area, evidencing the most intense flood zone. MM5, 7-km LM and MOLOCH catch the widespread rainfall, but fail in capturing the precipitation peak. Only few hits are forecast by the other model runs (not shown). All models display misses on the peak zone (Montserrat), since they underestimate the magnitude of the

event (Fig. 7). The two BOLAMs display few false alarms and diffused misses (more simply, their forecast is too dry). Comparing patterns of false alarms and misses, shift errors can be detected, especially in MOLOCH and in the two LMs’ forecasts (not shown).

Quantitative verification can be also performed from a deterministic point of view directly comparing observed and forecast rainfall amounts.

In Fig. 8 observed and predicted rainfall, accumulated for all the event time (36 h), are compared by basin. These values outline a picture which partially differ from the one given by the skill score verification: for example, on the Llobregat basin RAMS prediction is quite good, whereas MM5 overestimates the most intense peak. Such different evaluations of the skill are due, among other things, to the high sensitivity of the non-parametric skill score approach to small localization errors (double penalty effect). These results emphasize the multi-dimensional nature of the verification task: its results are strongly dependent on the chosen forecast evaluation method, and eventually on the final forecast use.

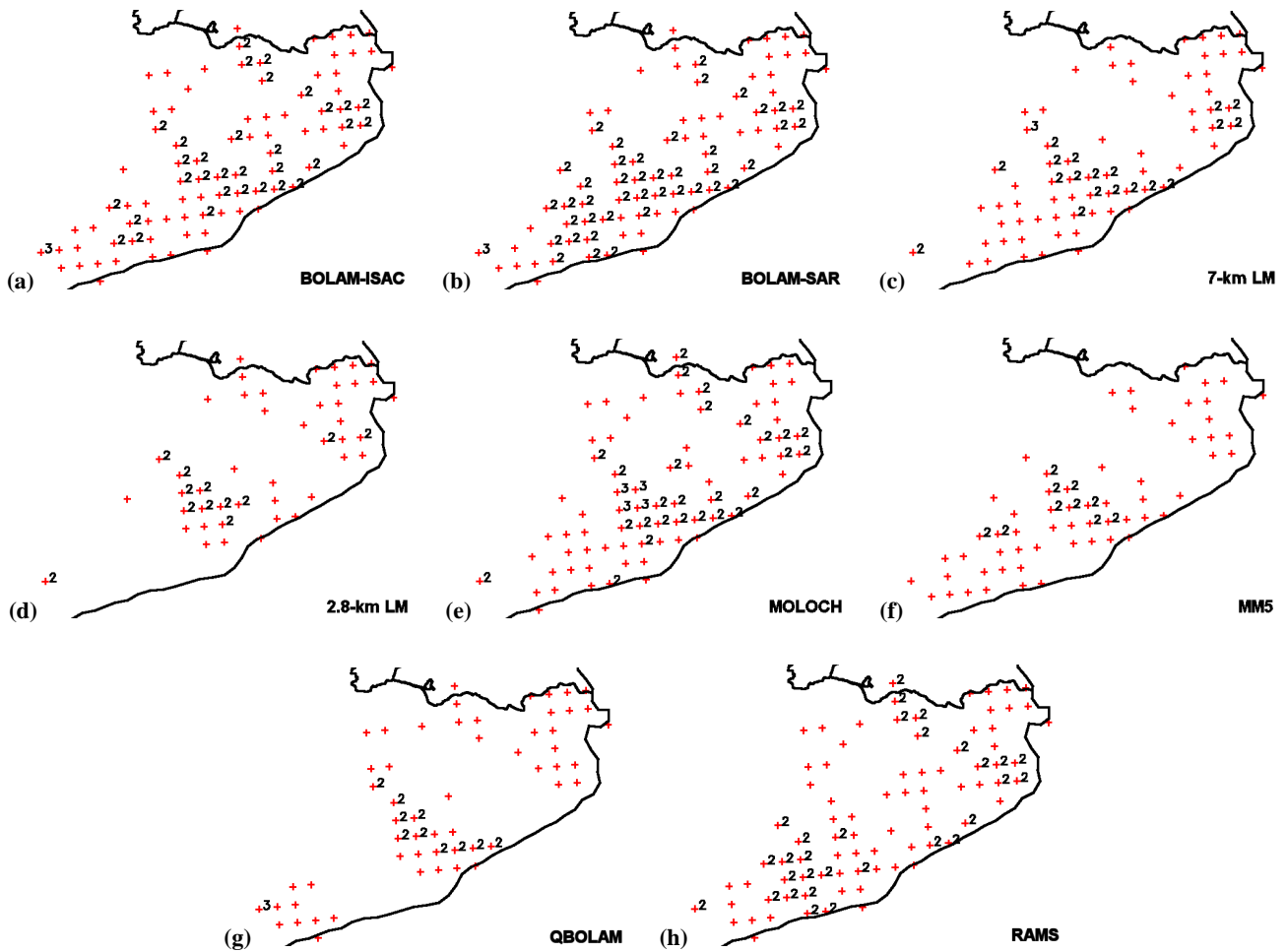


Fig. 7. An example of the spatial information given by a contingency table element verification approach. Misses were calculated on 3-h based contingency tables for a 10.0 mm/3h threshold. Each red cross indicates a grid point with at least one miss. If more than one miss is present during the 36-h simulation, it is indicated accordingly.

Table 3. Percentage of hits calculated on the 12-h accumulation time contingency tables. For each model simulation, values are catalogued with respect to thresholds.

Model	Percentage of hits for each selected threshold (%)						
	0.5 mm/12 h	5.0 mm/12 h	10.0 mm/12 h	20.0 mm/12 h	40.0 mm/12 h	60.0 mm/12 h	80.0 mm/12 h
BOLAM-ISAC	37.59	33.33	29.43	16.31	1.42	0.00	0.00
BOLAM-SAR	37.59	32.27	27.30	12.06	1.42	0.00	0.00
2.8-km LM	37.59	34.04	31.91	25.89	8.87	2.13	0.35
7-km LM	37.59	34.04	31.91	20.21	2.84	1.06	0.00
MM5	37.23	33.69	32.27	22.34	4.96	3.19	1.42
MOLOCH	39.72	34.40	29.08	15.96	0.71	0.00	0.00
QBOLAM	37.23	32.98	31.21	25.18	10.28	4.26	1.42
RAMS	34.40	31.56	29.43	17.38	2.13	0.35	0.00

Keeping in mind the description given in § 2, some insight on the forecast quality, and the representation of the relevant physical processes, is given by the comparison among observed and predicted precipitation patterns, both on a 36-h

accumulation base (cf. Figs. 3 and 5), and over shorter accumulation time intervals (not shown).

Actually, the observed squall line is not present in the two BOLAMs (Figs. 5(a) and 5(b)) and RAMS (Fig. 5(h))

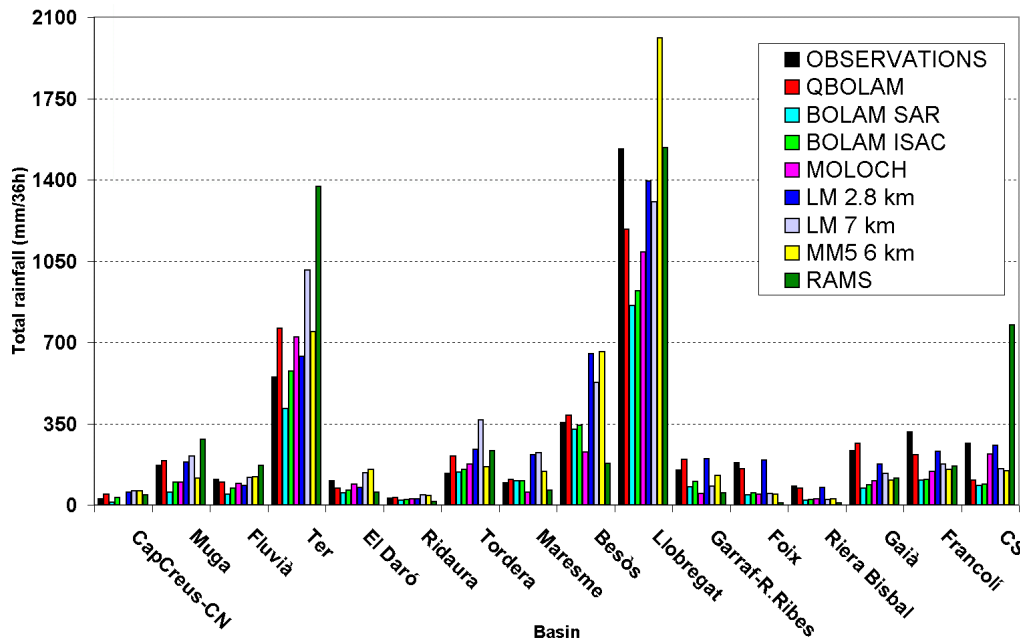


Fig. 8. Total accumulated precipitation (from 00:00 UTC, 9 June to 12:00 UTC, 10 June 2000) over the inner Catalonia basins, from rain gauge observations and models’ forecast.

forecasts, whereas rain is predicted to the north (on the Pyrenees) and to the west of the flooded area; it is also underestimated in the BOLAMs’ forecast. MOLOCH (Fig. 5(e)), nested to BOLAM-ISAC, detects a strong rainfall peak, but with a sensible northward shift. The runs from the other four models tend to develop small scale structures similar to the observed squall line, which differ in shape and location. QBOLAM (Fig. 5(g)) and MM5 (Fig. 5(f)) forecast an elongated, compact band, located nearby the observed peak. The two LMs (Figs. 5(c) and 5(d)) show small, intense structures: the 7-km run reproduces the main peak, with a slight eastward shift, while the 2.8-km run well reproduces the southwestern and coastal secondary maxima.

A comparison over a 1-h accumulation period (not shown) evidences a strong match between the observed evolution of rainfall spatial distribution (a north-westerly elongated squall line moving eastwards) and the QBOLAM simulation; while the MM5 predicted precipitation starts north of the observed maximum location, then moving towards it. These results match, and in some sense explain, what has been seen in the discussion about the skill scores.

Such a qualitative discussion can be dealt in a more objective way by means of CRA analysis. For the 6-h period of maximum observed rainfall intensity (from 00:00 UTC to 06:00 UTC of 10 June 2000), results are shown in Table 4.

On a 6-h basis, the error from two BOLAMs, MOLOCH, MM5, RAMS and especially from 7-km LM is mainly due to displacement component. For RAMS, MOLOCH, and the two BOLAMs the displacement to be applied to the forecast field to best fit the observed field is about 60–70 km (south-westwards).

This could be possibly due to a CRA matching of the observed peak with the much larger rainfall amount predicted nearby the Pyrenees and not with the weak precipitation predicted on the flood zone. This problem may arise when verification is performed over a small domain, especially when different rainfall forecast patterns are close in the area (Tartaglione et al., 2005). However after the CRA matching, for each simulation, not only the MSE decreases, but correlation strongly increases.

QBOLAM displays the smallest MSE (also after the CRA matching), almost all due to both pattern and displacement errors, whilst volume errors are small. On the contrary, the 2.8-km LM displays the smallest error shift, and most of the error is due to the pattern error source.

The CRA analysis has been also performed on the entire event (not shown). In many cases the 36-h results strongly differ from the 6-h ones, this could indicate the presence of a shift error variable in time. It is expected that a shift constant in time is associated mainly to large-scale dynamics forecast error, whereas a variable shift is more likely associated with errors due to representation of mesoscale processes.

All the aforementioned results provide a description of different models’ precipitation forecast. Further work would be needed in order to try to explain different model performances in terms of model properties and run design via the representation of key atmospheric phenomena. A correct identification of such factors requires at least extensive sensitivity tests over all the involved models, and this lies outside the scopes of this work. However, a preliminary inspection of the predicted fields can provide some insight. In the following some results are presented: first of all, the simulation from QBOLAM run (the one obtaining the highest scores, as

Table 4. CRA verification for 6 h (from 00:00 UTC to 06:00 UTC of 10 June 2000) intense rainfall of the Montserrat case study. A CRA rain rate contour equal to 0.5 mm/6 h has been chosen. Maximum observed analysis equal to 95.16 mm/6 h. For each quantity, the best values are indicated in bold.

Model	Maximum forecast (mm/6 h)	Displacement (E, N) in degree	MSE	Shifted MSE	MSE displ. (%)	MSE vol. (%)	MSE patt. (%)	Correlation	Shifted correlation
BOLAM-ISAC	66.20	(−0.2, −0.6)	1294.3	485.7	62.5	3.0	34.5	−0.37	0.76
BOLAM-SAR	63.30	(−0.1, −0.6)	1229.7	437.1	64.4	10.4	25.2	−0.16	0.87
2.8-km LM	87.32	(−0.2, 0.0)	566.2	395.6	30.1	0.2	69.7	0.60	0.75
7-km LM	99.69	(−0.4, −0.5)	1630.4	252.6	84.5	0.6	14.9	−0.31	0.86
MM5	157.25	(−0.2, −0.4)	2290.7	465.7	79.7	1.4	18.9	−0.06	0.78
MOLOCH	116.43	(−0.3, −0.6)	1669.3	434.1	74.0	1.1	24.9	−0.23	0.72
QBOLAM	104.08	(0.0, −0.4)	318.1	165.1	48.1	1.3	50.6	0.82	0.90
RAMS	107.21	(−0.5, −0.5)	2739.3	631.7	76.9	0.0	23.1	−0.64	0.61

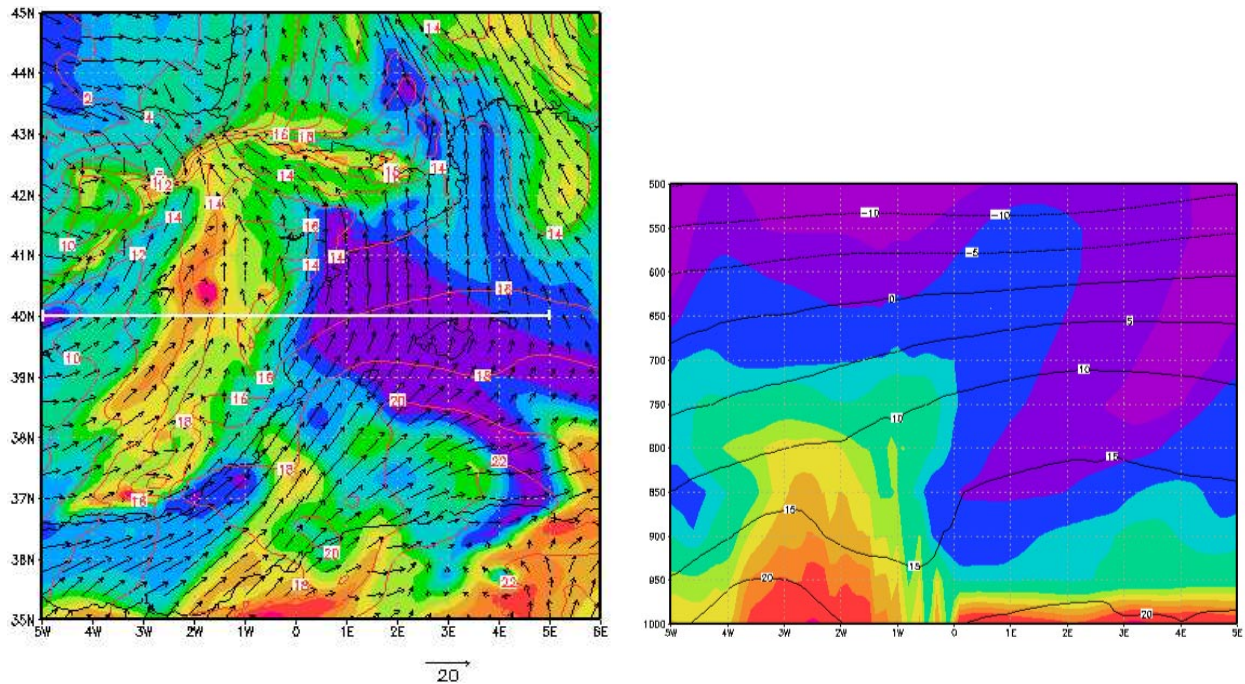


Fig. 9. QBOLAM simulation verifying 12:00 UTC, 10 June 2000. (a) 850-hPa specific humidity (in color), temperature (red curves) and wind (vectors) fields. (b) cross-section of specific humidity (in color) and temperature (black curves) along the white line indicated in (a).

in Fig. 6) is discussed in some detail; then a briefly subjective comparison with other two simulations (from BOLAM-SAR and MM5) is presented.

The 850-hPa QBOLAM forecast, few hours before the event (Fig. 5), evidences the key physical factor which influence the rainfall distribution. Three air masses are converging on Catalonia: cold air is advected northerly from the Atlantic; moist, cyclonic air is present over the Iberian Peninsula; warm air from the Western Mediterranean Sea is advected southerly and forced eastwards by the Pyrenees. The different vertical structure of the last two air masses is evident in the cross section in Fig. 5: deep convection is present over the land; a potentially unstable profile, with moisture

concentrated in the lower layers, over the sea. The convergence of these two air masses results in a “wet pool” over Catalonia, bounded northerly by the Pyrenees and westerly by the incoming cold Atlantic air. The mesoscale dynamics inside such a “pool” is responsible of the space-time rainfall distribution during the event.

Moreover, as an example, the 850-hPa fields over Catalonia forecast at 00:00 UTC of 10 June 2000 from QBOLAM, the 6-km MM5 and BOLAM-SAR are compared. In Fig. 10 the main elements which affect the precipitation process are clearly visible: the distribution of the incoming air masses, the humidity pattern, the wind convergence zones, and the geopotential field structure. Such structures display

remarkable differences from model to model. This is not surprising, since a very different forecast skill among the three simulations was found (see, for example, Fig. 6).

However, the linkage between skill differences and pattern differences is far from evident. For example, QBOLAM patterns display more qualitative resemblance with ones from BOLAM-SAR (which has a lower skill) than with ones from MM5 (which has about the same skill); actually, much less moisture is present in the BOLAM-SAR run than in the other two.

It is possible that the different initialization between BOLAM-SAR and QBOLAM was responsible of such a different moisture content, but it should be noted that BOLAM-SAR produces an even less skilled forecast when initialized as QBOLAM (see § 3.1.2).

Furthermore, wind convergence patterns are sharper in MM5 and BOLAM-SAR runs than in QBOLAM. This could be due to differences in resolution or in the parameterization schemes; however, it is not clear how this can affect the forecast quality. The westerly cold air spreads more eastward in MM5 than in QBOLAM; this can be reasonably related with the aforementioned north-eastward shift of MM5 predicted precipitation maximum.

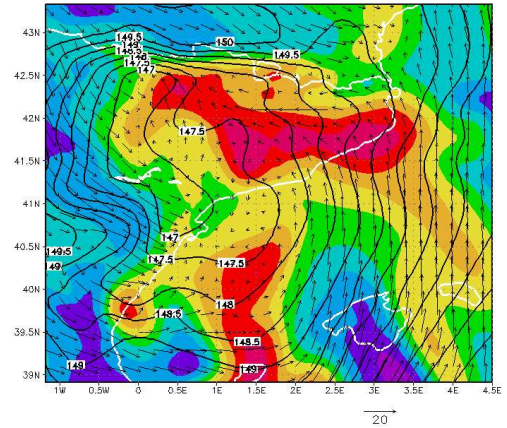
At any rate, it is a quite nontrivial task to trace such mesoscale details back to the differences in model formulation, experimental design and initialization. Hence, this issue will require further work to be addressed.

6 Conclusions

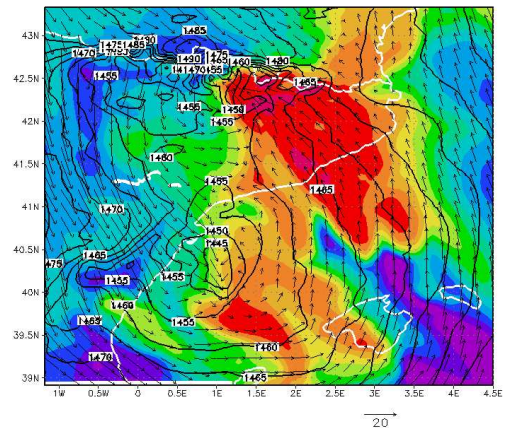
The “Montserrat-2000” event is characterized by an exceptional concentration of rainfall both in space and time: this makes a satisfying hydro-meteorological forecasting quite a challenging tasks for LAMs. The pros and cons of high-resolution, non-hydrostatic dynamics, or advanced cumulus parameterization schemes are not straightforward.

The verification study, performed with different statistical and deterministic, objective and subjective techniques, displays a complex image of the different simulations’ performance. Results evidence a better forecast quality of QBOLAM, MM5, and LMs simulations, essentially due to the development of a squall line over southern-central Catalonia, which is not caught by the other models. Furthermore, the forecast skill is affected by errors in position, orientation, texture and timing of the rain band, which vary among simulations.

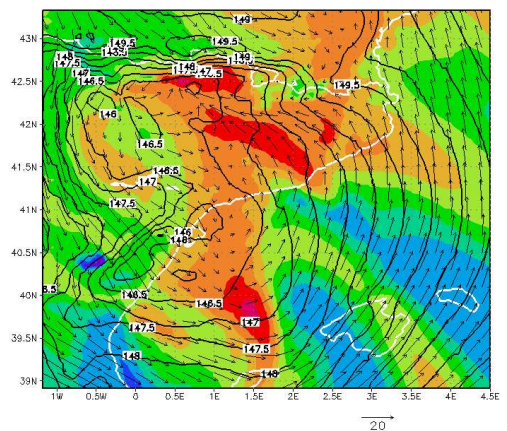
An assessment of the effect of different model run initializations should be preliminary to any interpretation of these results, especially considering that the highest skill scores are obtained by a run (QBOLAM) using a different initial analysis than the others. Anyway, at a first look, most of the models that show a better performance are non-hydrostatic, higher-resolution ones (LM, MM5). This indicates that high resolution is a valuable ingredient of forecast quality in this case, considering also that a large-scale shift error cannot be corrected only by enhancing the model



(a) QBOLAM



(b) 6-km MM5



(c) BOLAM-SAR

Fig. 10. 850-hPa forecast over Catalonia of specific humidity (in color), geopotential height (black curves) and wind verifying 00:00 UTC, 10 June 2000.

resolution. However, this assessment is not fully unambiguous. In fact, the QBOLAM simulation shows the best performance despite its lower resolution, hydrostaticity and simple parameterization schemes. Since the main QBOLAM advantage is its large domain extension, this may suggest a significant role of the domain extension in shaping a correct forecast of this case study.

An essential factor in this sense could be the correct representation of meso-synoptic forcing patterns, which shape the circulation over Catalonia by the convergence of three air masses coming from western Mediterranean, Iberian Peninsula and Atlantic Ocean and the barrier effect of the Pyrenees. How these factors operate in the single simulations, and how this depends on model properties and configurations, run initialization, etc., will be the object of future studies.

Acknowledgements. The authors thank Hydroptimet partners who made forecast and observed data available to us. We thank also Giuseppina Monacelli (APAT), Tomeu Rigo (Univ. of Barcelona), Tiziana Paccagnella and Chiara Marsigli (ARPA-SIM), Andrea Buzzi (ISAC-CNR), Piero Chessa (SAR), Massimiliano Pasqui and Samantha Melani (LaMMA) and Alberto Martín García (Univ. of Illes Balears). Comments and suggestions received during the workshops were very useful.

Edited by: A. Buzzi

Reviewed by: two referees

References

- Accadia, C., Mariani, S., Casaioli, M., Lavagnini, A., and Speranza, A.: Sensitivity of precipitation forecast skill scores to bilinear interpolation and a simple nearest-neighbor average method on high-resolution verification grids, *Weather Forecast.*, 23, 453–469, 2003.
- Baldwin, M.: Quantitative Precipitation Forecast Verification Documentation, Tech. rep., NCEP/EMC, www.emc.ncep.noaa.gov/mmb/ylin/pcpverif/scores/docs/mbdoc/pptmethod.html, 2000.
- Barnes, S. L.: A technique for maximizing details in numerical weather map analysis, *J. Appl. Meteorol.*, 3, 396–409, 1964.
- Barnes, S. L.: Mesoscale objective analysis using weighted time-series observations, NOAA, National Severe Storm Laboratory, Norman, OK 73069, tech. memo. ERL NSSL-62, 1973.
- Buzzi, A. and Foschini, L.: Mesoscale meteorological features associated with heavy precipitation in the southern Alpine region, *Meteorol. Atmos. Phys.*, 72, 131–146, 2000.
- Buzzi, A., Fantini, M., Malguzzi, P., and Nerozzi, F.: Validation of a limited area model in cases of Mediterranean cyclogenesis: surface fields and precipitation scores, *Meteorol. Atmos. Phys.*, 53, 53–67, 1994.
- Buzzi, A., Tartaglione, N., and Malguzzi, P.: Numerical Simulation of the 1994 Piedmont Flood: Role of Orography and moist processes, *Mon. Weather Rev.*, 126, 2369–2383, 1998.
- Buzzi, A., Davolio, S., D’Isidoro, M., and Malguzzi, P.: The impact of resolution and of 4-D Var reanalysis on the simulations of heavy precipitation in MAP cases, *Meteor. Z.*, 13, 91–97, 2004.
- Cherubini, T., Ghelli, A., and Lalaurette, F.: Verification of precipitation forecasts over the Alpine region using a high-density observing network, *Weather Forecast.*, 17, 238–249, 2002.
- Crosson, W. L., Duchon, C. E., Raghavan, R., and Goodman, S. J.: Assessment of rainfall estimates using a standard Z-R relationship and the probability matching method applied to composite radar data in central Florida, *J. Appl. Meteorol.*, 35, 1203–1219, 1996.
- Drofa, O. V.: The parameterization of microphysical processes for atmospheric numerical models, *Nuovo Cimento*, 26C, 233–262, 2003.
- Ebert, E. E. and McBride, J. L.: Verification of precipitation in weather systems: determination of systematic errors, *J. Hydrol.*, 239, 179–202, 2000.
- Ferraro, R. R.: Special sensor microwave imager derived global rainfall estimates for climatological applications, *J. Geophys. Res.*, 102(D14), 16715–16735, 1997.
- Ferraro, R. R. and Marks, G. F.: The development of SSM/I rain-rate retrieval algorithms using ground-based radar measurements, *J. Atmos. Ocean. Technol.*, 12, 755–770, 1995.
- Hamill, T. M.: Hypothesis tests for evaluating numerical precipitation forecasts, *Weather Forecast.*, 14, 155–167, 1999.
- Hanssen, A. W. and Kuipers, W. J. A.: On the relationship between the frequency of rain and various meteorological parameters, *Meded. Verh.*, 81, 2–15, 1965.
- Kain, J. S. and Fritsch, J. M.: A one-dimensional entraining/detraining plume model and its application in convective parameterization, *J. Atmos. Sci.*, 47, 2784–2802, 1990.
- Koch, S. E., desJardins, M., and Kocin, P. J.: An interactive Barnes objective map analysis scheme for use with satellite and conventional data, *J. Climate Appl. Meteor.*, 22, 1487–1503, 1983.
- Kuo, H. L.: Further studies of the parameterization of the influence of cumulus convection on large scale flow, *J. Atmos. Sci.*, 31, 1232–1240, 1974.
- Llasat, C., Barriendos, M., and Rigo, T.: The “Montserrat-2000” flash-flood event: a comparison with the floods that have occurred in the northeast Iberian Peninsula since the 14th century, *Int. J. Climatol.*, 23, 453–469, 2003.
- Lorenz, E. N.: Energy and numerical weather prediction, *Tellus*, 12, 364–373, 1960.
- Louis, J. F., Tiedtke, M., and Geleyn, J. F.: A short history of the PBL parameterization at ECMWF, proceedings of the ECMWF workshop on planetary boundary layer parameterization, ECMWF, 25–27 November 1982, Reading, UK, 1982.
- Malguzzi, P. and Tartaglione, N.: An economical second order advection scheme for numerical weather prediction, *Quart. J. Roy. Meteorol. Soc.*, 125, 2291–2303, 1999.
- Mason, I.: Dependence of the critical success index on sample climate and threshold probability, *Aust. Meteorol. Mag.*, 37, 75–81, 1989.
- Mass, C. F., Ovens, D., Westrick, K., and Colle, B. A.: Does Increasing Horizontal Resolution Produce More Skillful Forecasts?, *Bull. Amer. Meteorol. Soc.*, 83, 407–430, 2002.
- McBride, J. L. and Ebert, E. E.: Verification of quantitative precipitation forecasts from operational numerical weather prediction models over Australia, *Weather Forecast.*, 15, 103–121, 2000.
- Mesinger, F.: Forward-backward scheme and its use in a LAM, *Atmos. Phys.*, 50, 200–210, 1977.
- Meyers, M. P., Walko, R. L., Harrington, J., and Cotton, W. R.: New RAMS cloud microphysics parameterization. Part II: The two-moment scheme, *Atmos. Res.*, 45, 3–39, 1997.
- Page, J. K.: Prediction of solar radiation on inclined surfaces, D. Reidel Publishing Company, Dordrecht, 1986.

- Pasqui, M., Gozzini, B., Grifoni, D., Meneguzzo, F., Messeri, G., Pieri, M., Rossi, M., and Zipoli, G.: Performances of the operational RAMS in a Mediterranean region as regards to quantitative precipitation forecasts. Sensitivity of precipitation and wind forecasts to the representation of the land cover, proceedings of the 4th RAMS Users Workshop, Cook College-Rutgers University, 22–24 May 2000, New Jersey, USA, 2000.
- Pasqui, M., Pasi, F., and Gozzini, B.: Sahara dust impact on precipitation in severe storm events over west-central Mediterranean area, Proceedings of the 14th International Conference on Cloud and Precipitation, 18–23 July 2004, Bologna, Italy, 1, 181–184, 2004.
- Rigo, T. and Llasat, M. C.: A methodology for the classification of convective structures using meteorological radar: Application to heavy rainfall events on the Mediterranean coast of the Iberian Peninsula, *Nat. Hazards Earth Syst. Sci.*, 4, 59–68, 2004, **SRef-ID: 1684-9981/nhess/2004-4-59**.
- Ritter, B. and Geleyn, J. F.: A comprehensive radiation scheme for numerical weather prediction models with potential applications in climate simulations, *Mon. Weather Rev.*, 120, 303–325, 1992.
- Ruti, P. M., Cassardo, C., Cacciamani, C., Paccagnella, T., Longhetto, A., and Bargagli, A.: Intercomparison between BATS and LSPM surface schemes, using point micrometeorological data set, *Beitr. Phys. Atmos.*, 70, 201–220, 1997.
- Schaefer, J. T.: The critical success index as an indicator of warning skill, *Weather Forecast.*, 5, 570–575, 1990.
- Schultz, P.: An explicit cloud physics parameterization for operational numerical weather prediction, *Mon. Weather Rev.*, 123, 3331–3343, 1995.
- Spencer, P. L. and Stensrud, D. J.: Simulating flash flood events: importance of the subgrid representation of the convection, *Mon. Weather Rev.*, 126, 2284–2912, 1998.
- Speranza, A., Accadia, C., Casaioli, M., Mariani, S., Monacelli, G., Inghilesi, R., Tartaglione, N., Ruti, P. M., Carillo, A., Bargagli, A., Pisacane, G., Valentinotti, F., and Lavagnini, A.: POSEIDON: an integrated system for analysis and forecast of hydrological, meteorological and surface marine fields in the Mediterranean area, *Nuovo Cimento*, 27, 329–345, 2004.
- Tartaglione, N., Mariani, S., Accadia, C., Speranza, A., and Casaioli, M.: Comparison of raingauge observation with modeled precipitation over Cyprus using contiguous rain area analysis, *Atmos. Chem. Phys. Discuss.*, 5, 2355–2376, 2005.
- Turk, F. J., Hawkins, J., Smith, E. A., Marzano, F. S., Mugnai, A., and Levizzani, V.: Combining SSM/I, TRMM and infrared geostationary satellite data in a near-realtime fashion for rapid precipitation updates: advantages and limitations, pp. 452–459, Proceedings of the 2000 EUMETSAT Meteorological Satellite Data Users’ Conference, 2000a.
- Turk, J. F., Rohaly, G., Hawkins, J., Smith, E. A., Marzano, F. S., Mugnai, A., and Levizzani, V.: Meteorological applications of precipitation estimation from combined SSM/I, TRMM and geostationary satellite data, VSP Int. Sci. Publisher, Utrecht (The Netherlands), 2000b.
- Walko, R. L., Cotton, W. R., Meyers, M. P., and Harrington, J.: New RAMS cloud microphysics parameterization. Part I: The single-moment scheme, *Atmos. Res.*, 38, 29–62, 1995.
- Walko, R. L., Band, L. E., Baron, J., Kittel, T. G. F., Lammers, R., Lee, T. J., Ojima, D., Pielke, R. A., Taylor, C., Tague, C., Tremback, C. J., and Vidale, P. L.: Coupled atmosphere-biophysics-hydrology models for environmental modeling, *J. Appl. Meteorol.*, 39, 931–944, 2000.
- Wilks, D. S.: Statistical methods in the atmospheric sciences: an introduction, Academic Press, San Diego (USA), 1995.
- Xie, P. and Arkin, P. A.: An intercomparison of gauge observations and satellite estimates of monthly precipitation, *J. Appl. Meteorol.*, 34, 1143–1160, 1995.