

Effect of magnetic pair breaking on Andreev bound states and resonant supercurrent in quantum dot Josephson junctions

Grygoriy Tkachov^{1,2} and Klaus Richter¹

¹ *Institute for Theoretical Physics, Regensburg University, 93040 Regensburg, Germany*

² *Max Planck Institute for the Physics of Complex Systems, 01187 Dresden, Germany*

We propose a model for resonant Josephson tunneling through quantum dots that accounts for Cooper pair-breaking processes in the superconducting leads caused by a magnetic field or spin-flip scattering. The pair-breaking effect on the critical supercurrent I_c and the Josephson current-phase relation $I(\varphi)$ is largely due to the modification of the spectrum of Andreev bound states below the reduced (Abrikosov-Gorkov) quasiparticle gap. For a quantum dot formed in a quasi-one-dimensional channel, both I_c and $I(\varphi)$ can show a significant magnetic field dependence induced by pair breaking despite the suppression of the orbital magnetic field effect in the channel. This case is relevant to recent experiments on quantum dot Josephson junctions in carbon nanotubes. Pair-breaking processes are taken into account via the relation between the Andreev scattering matrix and the quasiclassical Green functions of the superconductors in the Usadel limit.

PACS numbers: 74.50.+r, 73.63.-b

I. INTRODUCTION

Since its discovery the Josephson effect¹ has been studied for a variety of superconducting weak links^{2,3,4}. The research has recently entered a new phase with the experimental realization of quantum dot weak links exploiting electronic properties of finite-length carbon nanotubes coupled to superconducting leads^{5,6,7}. In particular, for the first time since its theoretical prediction^{8,9,10} resonant Josephson tunneling through discrete electronic states has been observed in carbon nanotube quantum dots⁶. As demonstrated in Refs. 6,7, the novel type of weak links exhibits transistor-like functionalities, e.g. a periodic modulation of the critical current with a gate voltage tuning successive energy levels in the dot on- and off-resonance with the Fermi energy in the leads. This property has already been implemented in a recently proposed carbon nanotube superconducting quantum interference device (CNT-SQUID)¹¹ with possible applications in the field of molecular magnetism.

Motivated by the experiments on resonant Josephson tunneling, in this paper we investigate theoretically how robust it is with respect to pair-breaking perturbations in the superconducting leads. Cooper pair breaking can be induced by a number of factors, e.g. by paramagnetic impurities¹², an external magnetic field¹³ or by structural inhomogeneities producing spatial fluctuations of the superconducting coupling constant¹⁴. It can cause a drastic distortion of the Bardeen-Cooper-Schrieffer (BCS) superconducting state, which manifests itself in the smearing of the BCS density of states leading to gapless superconductivity^{12,13}.

While the pair-breaking effect on bulk superconductivity is now well understood, its implications for quantum superconducting transport have been studied to a much lesser extent [see, e.g. Refs. 4,15,16] which to our knowledge does not cover Josephson tunneling through quantum dots. On the other hand, in low-dimensional systems

pair-breaking effects may be observable in a common experimental situation when, for instance, a carbon nanotube weak link is subject to a magnetic field. Since the orbital field effect in the quasi-one-dimensional channel is strongly suppressed, pair breaking in the superconducting leads can be the main source of the magnetic field dependence of the Josephson current. This situation is addressed in our work.

The influence of pair breaking on the Josephson current can not, in general, be accounted for by mere suppression of the order parameter in the superconducting leads. As was pointed out in Ref. 15, it is a more subtle effect involving the modification of the spectrum of current carrying states in the junction, in particular, the subgap states usually referred to as Andreev bound states (ABS)^{10,17}. We illustrate this idea for quantum dot junctions in the simple model of a short superconducting constriction with a scattering region containing a single Breit-Wigner resonance near the Fermi energy. The Josephson current is calculated using the normal-state scattering matrix of the system and the Andreev reflection matrix^{9,10}. Unlike Refs. 9,10 we focus on dirty superconductors for which the Andreev matrix can be quite generally expressed in terms of the quasiclassical Green functions¹⁸, allowing us to treat pair breaking in the superconducting leads nonperturbatively. Although we account for all energies (below and above the Abrikosov-

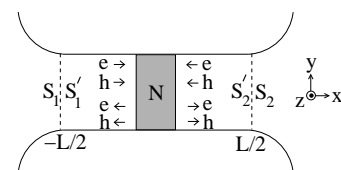


FIG. 1: Scheme of a superconducting constriction with a normal scattering region N . The arrows indicate the electrons (e) and holes (h) incident on and outgoing from N .

Gorkov gap $\Delta_{\mathbf{g}}$), it turns out that the behavior of the Josephson current can be well understood in terms of a pair-breaking-induced modification of the ABS, which depends sensitively on the relation between the Breit-Wigner resonance width Γ and the superconducting pairing energy Δ . Both the critical supercurrent and the Josephson current-phase relation are analyzed under experimentally realizable conditions.

II. MODEL AND FORMALISM

We consider a junction between two superconductors S_1 and S_2 adiabatically narrowing into quasi-one-dimensional ballistic wires S'_1 and S'_2 coupled to a normal conductor N [Fig. 1]. The transformation from the superconducting electron spectrum to the normal-metal one is assumed to take place at the boundaries $S_1S'_1$ and S'_2S_2 , implying the pairing potential of the form²: $\Delta(x) = \Delta e^{i\varphi_1}$ for $x < -L/2$, $\Delta(x) = 0$ for $|x| \leq L/2$ and $\Delta(x) = \Delta e^{i\varphi_2}$ for $x > L/2$ with the order parameter phase difference $\varphi \equiv \varphi_2 - \varphi_1$ and the junction length $L \ll \hbar v_F/\Delta$ (v_F is the Fermi velocity in $S_{1,2}$).

The Josephson coupling can be interpreted in terms of the Andreev process¹⁹ whereby an electron is retro-reflected as a Fermi-sea hole from one of the superconductors with the subsequent hole-to-electron conversion in the other one. Such an Andreev reflection circle facilitates a Cooper pair transfer between S_1 and S_2 . Normal backscattering from disordered superconducting bulk into a single-channel junction is suppressed due to the smallness of the junction width compared to the elastic mean free path ℓ . The N region in the middle of the junction is thus supposed to be the only source of normal scattering. In such type of weak links the Josephson current is conveniently described by the scattering matrix expression of Refs. 10,20 that can be written at finite temperature T as the following sum over the Matsubara frequencies $\omega_n = (2n+1)\pi k_B T$ [Ref. 20]:

$$I = -\frac{2e}{\hbar} 2k_B T \frac{\partial}{\partial \varphi} \sum_{n=0}^{\infty} \ln \text{Det} [\hat{1} - \hat{s}_A(E) \hat{s}_N(E)]_{E=i\omega_n}. \quad (1)$$

Here $\hat{s}_N(E)$ is a 4×4 unitary matrix relating the incident electron and hole waves on the N region to the outgoing ones [Fig. 1]. It is diagonal in the electron-hole space:

$$\hat{s}_N = \begin{bmatrix} s_{ee}(E) & 0 \\ 0 & s_{hh}(E) \end{bmatrix}, \quad s_{ee}(E) = \begin{bmatrix} r_{11}(E) & t_{12}(E) \\ t_{21}(E) & r_{22}(E) \end{bmatrix}.$$

The matrix $s_{ee}(E)$ describes electron scattering in terms of the reflection and transmission amplitudes, $r_{jk}(E)$ and $t_{jk}(E)$, for a transition from S'_k to S'_j ($j, k = 1, 2$). The hole scattering matrix is related to the electron one by $s_{hh}(E) = s_{ee}^*(-E)$. The Andreev scattering matrix $\hat{s}_A(E)$ is off-diagonal in the electron-hole space:

$$\hat{s}_A = \begin{bmatrix} 0 & s_{eh}(E) \\ s_{he}(E) & 0 \end{bmatrix}, \quad (2)$$

where the 2×2 matrices $s_{he}(E)$ and $s_{eh}(E)$ govern the electron-to-hole and hole-to-electron scattering off the superconductors. Equation (1) is valid for all energies as long as normal scattering from the superconductors is absent^{10,20}.

In Ref. 10 the Andreev matrix (2) was obtained by matching the solutions of the Bogolubov-de Gennes equations in the wires $S'_{1,2}$ to the corresponding solutions in impurity-free leads. Gorkov's Green function formalism in combination with the quasiclassical theory²¹ allows one to generalize the results of Ref. 10 to dirty leads with a short mean free path $\ell \ll \hbar v_F/\Delta$. In the latter case the matrices $s_{he}(E)$ and $s_{eh}(E)$ can be expressed in terms of the quasiclassical Green functions of the superconductors as follows¹⁸:

$$s_{eh} = \begin{bmatrix} \frac{f_1(E)}{g_1(E)+1} & 0 \\ 0 & \frac{f_2(E)}{g_2(E)+1} \end{bmatrix}, \quad s_{he} = \begin{bmatrix} \frac{-f_1^\dagger(E)}{g_1(E)+1} & 0 \\ 0 & \frac{-f_2^\dagger(E)}{g_2(E)+1} \end{bmatrix}.$$

Here $g_{1,2}$ and $f_{1,2}$ ($f_{1,2}^\dagger$) are, respectively, the normal and anomalous retarded Green functions in $S_{1,2}$. These matrices are diagonal in the electrode space due to a local character of Andreev reflection in our geometry.

Neglecting the influence of the narrow weak link on the bulk superconductivity, we can use the Green functions of the uncoupled superconductors $S_{1,2}$ described by the position-independent Usadel equation²¹,

$$\left[E\hat{\tau}_3 + \hat{\Delta}_j + \frac{i\hbar}{2\tau_{pb}} \hat{\tau}_3 \hat{g}_j \hat{\tau}_3, \hat{g}_j \right] = 0, \quad (3)$$

with the normalization condition $\hat{g}_j^2 = \hat{\tau}_0$ for the matrix Green function

$$\hat{g}_j = \begin{bmatrix} g_j & f_j \\ f_j^\dagger & -g_j \end{bmatrix}, \quad \hat{\Delta}_j = \begin{bmatrix} 0 & \Delta e^{i\varphi_j} \\ -\Delta e^{-i\varphi_j} & 0 \end{bmatrix}, \quad j = 1, 2.$$

Here $\hat{\tau}_0$ and $\hat{\tau}_3$ are the unity and Pauli matrices, respectively, and $[..., ...]$ denotes a commutator. Equation (3) accounts for a finite pair-breaking rate τ_{pb}^{-1} whose microscopic expression depends on the nature of the pair-breaking mechanism. For instance, for thin superconducting films in a parallel magnetic field, $\tau_{pb}^{-1} = (v_F \ell / 18) (\pi d B / \Phi_0)^2$ [Ref. 13] where d is the film thickness and Φ_0 is the flux quantum. For paramagnetic impurities, τ_{pb} coincides with the spin-flip time¹². In the case of the spatial fluctuations of the superconducting coupling, τ_{pb}^{-1} is proportional to the variance of the fluctuations¹⁴.

From Eq. (3) one obtains the Green functions

$$g_j = \frac{u}{\sqrt{u^2 - 1}} = u e^{-i\varphi_j} f_j, \quad f_j^\dagger = -e^{-2i\varphi_j} f_j, \quad (4)$$

$$\frac{E}{\Delta} = u \left(1 - \frac{\zeta}{\sqrt{1 - u^2}} \right), \quad \zeta = \frac{\hbar}{\tau_{pb} \Delta}, \quad (5)$$

where, following Refs. 12,13, we introduce a dimensionless pair-breaking parameter ζ . The matrices s_{eh} and s_{he}

can be expressed using Eqs. (4) as follows:

$$s_{eh} = \alpha \begin{bmatrix} e^{i\varphi_1} & 0 \\ 0 & e^{i\varphi_2} \end{bmatrix}, \quad s_{he} = \alpha \begin{bmatrix} e^{-i\varphi_1} & 0 \\ 0 & e^{-i\varphi_2} \end{bmatrix}, \quad (6)$$

$$\alpha = u - \sqrt{u^2 - 1}. \quad (7)$$

We note that pair breaking modifies the energy dependence of the Andreev reflection amplitude α according to the non-BCS Green functions (4) and (5). A few words concerning the applicability of this result are due here.

First of all, there is no restriction on energy E , e.g. for $\zeta \leq 1$, equations (6) and (7) are valid both below and above the reduced (Abrikosov-Gorkov) quasiparticle gap $\Delta_{\mathbf{g}} = \Delta (1 - \zeta^{2/3})^{3/2}$. In particular, for $|E| \leq \Delta_{\mathbf{g}}$ one can show that u is real and $|u| \leq (1 - \zeta^{2/3})^{1/2} < 1$ [Ref. 13], corresponding to perfect Andreev reflection with $\alpha = \exp(-i \arccos(u))$. Since in the Usadel limit $\ell \ll v_F \tau_{pb}$, normal scattering from the superconductors is suppressed due to the smallness of the junction width also in the presence of pair breaking. The absence of normal transmission at $|E| \leq \Delta_{\mathbf{g}}$ is consistent with the Abrikosov-Gorkov approach assuming no impurity states inside the gap and the validity of the Born approximation^{12,13}. For $|E| \geq \Delta_{\mathbf{g}}$ the relevant solution of Eq. (5) is complex and has positive $\text{Im}u$ related to the density of states of the superconductor¹³. Equations (5) and (7) are thus the generalization of the known result $\alpha = (E/\Delta_0) - \sqrt{(E/\Delta_0)^2 - 1}$ [Ref. 22] for transparent point contact, where $\Delta_0 \equiv \Delta|_{\zeta=0}$ is the BCS gap. It is convenient to measure all energies in units of Δ_0 for which equations (4)–(7) should be complemented with the self-consistency equation for Δ . At $T = 0$, the case we are eventually interested in, this equation can be written as^{12,13}:

$$\ln(\zeta_0/\zeta) = -\pi\zeta/4, \quad \zeta \leq 1, \quad (8)$$

$$\ln(\zeta_0/\zeta) = \sqrt{\zeta^2 - 1}/(2\zeta) - \ln(\zeta + \sqrt{\zeta^2 - 1}) - (\zeta/2) \arctan\left(1/\sqrt{\zeta^2 - 1}\right), \quad \zeta \geq 1, \quad (9)$$

with ζ being now a function of a new pair-breaking parameter $\zeta_0 = \hbar/(\tau_{pb}\Delta_0)$ ranging from zero to the critical value $\zeta_0 = 0.5$ at which $\zeta = \infty$ and $\Delta = 0$ ^{12,13}.

Inserting Eqs. (2) and (6) for $\hat{s}_A(E)$ into Eq. (1) and taking the limit $T \rightarrow 0$ we obtain the Josephson current for an arbitrary $\hat{s}_N(E)$ as

$$I = -\frac{4e}{h} \int_0^\infty d\omega \frac{\partial}{\partial \varphi} \ln \left\{ 1 + \alpha^4 \text{Det } s_{ee}(E) \text{Det } s_{ee}^*(-E) - \alpha^2 [r_{11}(E)r_{11}^*(-E) + r_{22}(E)r_{22}^*(-E) + e^{-i\varphi}t_{21}(E)t_{12}^*(-E) + e^{i\varphi}t_{12}(E)t_{21}^*(-E)] \right\}_{E=i\omega}. \quad (10)$$

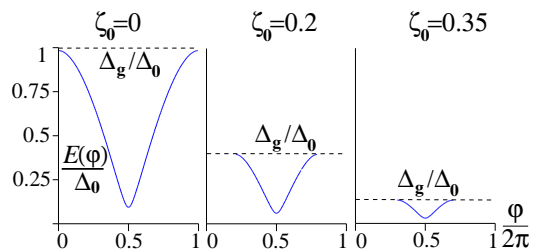


FIG. 2: Phase dependence of the Andreev bound state for a broad resonant level with $\Gamma = 15\Delta_0$ close to the Fermi energy ($E_r = 0.1\Gamma$); dashed line shows the normalized gap for a given value of the pair-breaking parameter ζ_0 .

III. ANDREEV BOUND STATES IN A RESONANT JUNCTION

Let us assume that the N region is a small quantum dot and electrons can only tunnel via one of its levels characterized by its position E_r with respect to the Fermi level and broadening Γ . For the simplest Breit-Wigner scattering matrix with $r_{11} = r_{22} = (E - E_r)/(E - E_r + i\Gamma)$ and $t_{12} = t_{21} = \Gamma/i(E - E_r + i\Gamma)$, equation (10) reads

$$I = -(2e/h)\mathcal{T} \sin \varphi \int_0^\infty d\omega \times \quad (11)$$

$$\left\{ u^2 \left(\mathcal{R} + \mathcal{T} \left(1 + \frac{\sqrt{1-u^2-\zeta}}{\Gamma/\Delta} \right)^2 \right) - 1 + \mathcal{T} \sin^2\left(\frac{\varphi}{2}\right) \right\}_{E=i\omega}^{-1}$$

where $\mathcal{T} = 1 - \mathcal{R} = \Gamma^2/(E_r^2 + \Gamma^2)$ is the Breit-Wigner transmission probability at the Fermi level. The parameter Γ/Δ accounts for the energy dependence of the resonant superconducting tunneling. In Eq. (11) the integrand has, in general, poles given by the equation

$$u^2 \left(\mathcal{R} + \mathcal{T} \left(1 + \frac{\sqrt{1-u^2-\zeta}}{\Gamma/\Delta} \right)^2 \right) = 1 - \mathcal{T} \sin^2\left(\frac{\varphi}{2}\right). \quad (12)$$

Along with Eq. (5) they determine the energies of the Andreev bound states (ABS) localized below the Abrikosov-Gorkov gap $\Delta_{\mathbf{g}} = \Delta (1 - \zeta^{2/3})^{3/2}$. It is instructive to understand how the pair breaking modifies the ABS spectrum since this is reflected on both the current-phase relation $I(\varphi)$ and the critical current $I_c \equiv \max I(\varphi)$.

We start our analysis with an analytically accessible case of an infinitely broad resonant level, $\Gamma/\Delta \rightarrow \infty$, where Eq. (12) reduces to $u^2 = 1 - \mathcal{T} \sin^2(\varphi/2)$, yielding the ABS energies $\pm E(\varphi)$ [see, Eq. (5)]:

$$E(\varphi) = \Delta \sqrt{1 - \mathcal{T} \sin^2(\varphi/2)} \left[1 - \frac{\zeta}{\sqrt{\mathcal{T}} |\sin(\varphi/2)|} \right]. \quad (13)$$

Requiring $E(\varphi) \leq \Delta_{\mathbf{g}}$ we find that the ABS exist in the phase interval where $\sin^2(\varphi/2) \geq \zeta^{2/3}/\mathcal{T}$ and only if $\zeta^{2/3} \leq \mathcal{T}$. The numerical solution of Eqs. (5), (8)

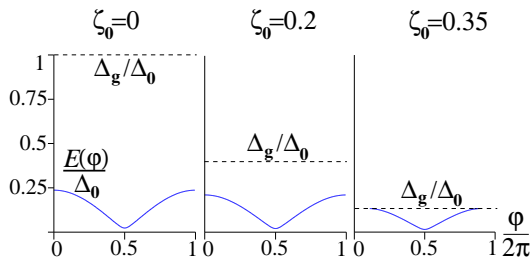


FIG. 3: Phase dependence of the Andreev bound state for a narrow resonant level with $\Gamma = 0.3\Delta_0$ and $E_r = 0.1\Gamma$.

and (12) confirms that the interval of the existence of ABS gradually shrinks from $0 \leq \varphi \leq 2\pi$ to a narrower one with increasing pair breaking [see, Fig. 2]. Outside this interval the Josephson current is carried by the continuum states ($E \geq \Delta_g$) alone, which is automatically accounted for by Eq. (11). An equation of the same form as Eq. (13) was derived earlier for a nonresonant system and by a different method¹⁵.

By contrast, the ABS spectrum for a narrow resonant level turns out to be much less sensitive to pair breaking. Indeed, under condition $\Gamma/\Delta \ll 1 - \zeta$ equations (5) and (12) reproduce the known result, $E(\varphi) = \sqrt{E_r^2 + \Gamma^2} \sqrt{1 - \mathcal{T} \sin^2(\varphi/2)}$ [Refs. 4,9]. In particular, for $E_r \rightarrow 0$ the ABS exist within the resonance width, $E(\varphi) < \Gamma$ and are separated from the continuum by a gap $\Delta_g - \Gamma$. Solving Eqs. (5), (8) and (12) numerically, we find that until this gap closes at a certain value of ζ_0 , the ABS spectrum remains virtually intact [see, Fig. 3]. For bigger ζ_0 , the spectrum gets modified in a way similar to the previous case [cf., third panels in Figs. 2 and 3]. In the case of a very narrow resonance, the characteristic value of ζ_0 is ≈ 0.45 , corresponding to $\zeta \approx 1$, i.e. to the onset of gapless superconductivity^{12,13}.

IV. CRITICAL CURRENT AND CURRENT-PHASE RELATION: RESULTS AND DISCUSSION

For numerical evaluation of the Josephson current (11) we first put $E = i\omega$ in Eq. (5) and then make the transformation $u \rightarrow i\nu$, yielding $\omega/\Delta = \nu(1 - \zeta/\sqrt{1 + \nu^2})$. Using this relation, in Eq. (11) we change to the integration over ν with the Jacobian $d\omega/d\nu = \Delta[1 - \zeta/(1 + \nu^2)^{3/2}]$:

$$I = (2e\Delta/h)\mathcal{T} \sin \varphi \int_{\nu_0}^{\infty} d\nu \left(1 - \frac{\zeta}{(1 + \nu^2)^{3/2}}\right) \times \left\{ \nu^2 \left(\mathcal{R} + \mathcal{T} \left(1 + \frac{\sqrt{1 + \nu^2} - \zeta}{\Gamma/\Delta}\right)^2 \right) + 1 - \mathcal{T} \sin^2\left(\frac{\varphi}{2}\right) \right\}^{-1}. \quad (14)$$

Positiveness of ω in Eq. (11) enforces the choice of the lower integration limit: $\nu_0 = 0$ for $\zeta \leq 1$ and $\nu_0 = \sqrt{\zeta^2 - 1}$ for $\zeta \geq 1$.

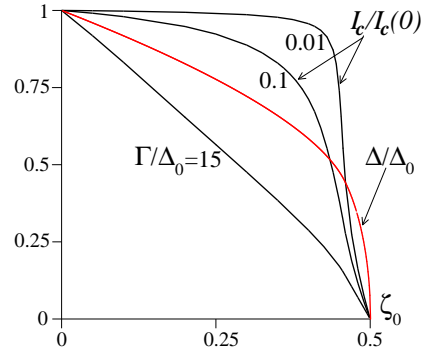


FIG. 4: On-resonance critical current vs. pair-breaking parameter $\zeta_0 = \hbar/(\tau_{pb}\Delta_0)$ for different Γ/Δ_0 . The behavior of the normalized order parameter^{12,13} is shown, for comparison, in red.

Using Eqs. (8), (9) and (14) we are able to analyze the critical current $I_c \equiv \max I(\varphi)$ in the whole range of the pair-breaking parameter, $0 \leq \zeta_0 \leq 0.5$ [see, Fig. 4]. In line with the discussed behavior of the Andreev bound states, for a narrow resonance, $\Gamma/\Delta_0 \ll 1$, the critical current starts to drop significantly only upon entering the gapless superconductivity regime $0.45 \leq \zeta_0 \leq 0.5$. On the other hand, for a broad resonance, $\Gamma/\Delta_0 \gg 1$, the suppression of I_c is almost linear in the whole range. We note that in both cases the behavior of I_c strongly deviates from that of the bulk order parameter (red curve)^{12,13} largely due to the pair-breaking effect on the ABS. In practice, the $I_c(\zeta_0)$ dependence can be measured by applying a magnetic field [the case where $\zeta_0 = (B/B_*)^2$ and $B_* = (\Phi_0/\pi d)\sqrt{18\Delta_0/\hbar v_F \ell}$] in an experiment similar to Ref. 6 where a quantum dot, defined in a single-wall carbon nanotube, was strongly coupled to the leads with the ratio $\Gamma/\Delta_0 \approx 10$. Carbon nanotube

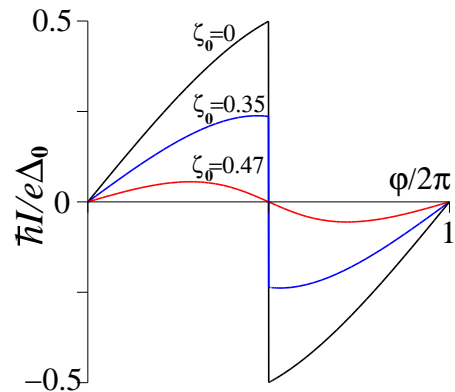


FIG. 5: On-resonance current-phase relation for different values of the pair-breaking parameter ζ_0 and $\Gamma = \Delta_0$.

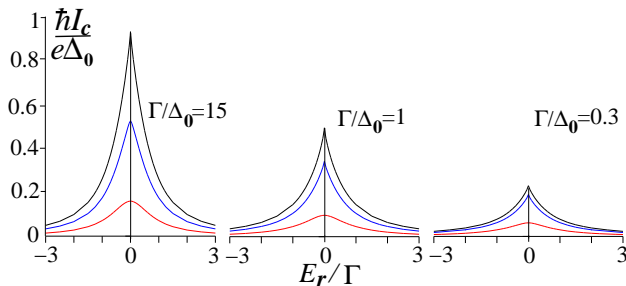


FIG. 6: Critical current vs. resonant level position: $\zeta_0 = 0$ (black), $\zeta_0 = 0.25$ (blue) and $\zeta_0 = 0.45$ (red).

quantum dots with lower Γ/Δ_0 values are accessible experimentally, too^{5,11}.

We also found that the crossover between the gapped and gapless regimes is accompanied by a qualitative change in the shape of the Josephson current-phase relation $I(\varphi)$ as demonstrated in Fig. 5 for the on-resonance case $E_r = 0$ and $\Gamma = \Delta_0$. The $I(\varphi)$ relation is anharmonic as long as the junction with $\Delta_g \neq 0$ supports the ABS (black and blue curves). The vanishing of the ABS upon entering the gapless regime leads to a nearly sinusoidal current-phase relation (red curve). A closely related effect is demonstrated in Fig. 6 showing the modification of the critical current resonance lineshape with the increasing pair-breaking strength. In the absence of pair breaking it is nonanalytic near $E_r = 0$ (black curves) reflecting the anharmonic $I(\varphi)$ due to the ABS in a trans-

parent channel^{9,10}. On approaching the gapless regime this singularity is smeared out (red curves), which is accompanied by the suppression of the I_c amplitude. At finite temperatures $T \ll \Delta/k_B$ the pair-breaking-induced smearing of the resonance peak will enhance the usual temperature effect.

In conclusion, we have proposed a model describing resonant Josephson tunneling through a quantum dot beyond the conventional BCS picture of the superconducting state in the leads. It allows for nonperturbative treatment of pair-breaking processes induced by a magnetic field or paramagnetic impurities in diffusive superconductors. We considered no Coulomb blockade effects, assuming small charging energy in the dot $E_C \ll \Delta_0, \Gamma$, which was, for instance, the case in the experiment of Ref. 6. Our predictions, however, should be qualitatively correct also for weakly coupled dots with $\Gamma \leq E_C \ll \Delta_0$ at least as far as the dependence of the critical supercurrent on the pair-breaking parameter is concerned. Indeed, for a narrow resonance the Andreev bound states begin to respond to pair breaking only when the gap Δ_g becomes sufficiently small [see, Fig. 3] so that for a finite $E_C \ll \Delta_0$ one can expect a sharp transition to the resistive state, too, similar to that shown in Fig. 4 for $\Gamma/\Delta_0 \ll 1$.

We thank D. Averin, C. Bruder, P. Fulde, A. Golubov, M. Hentschel, T. Novotny, V. Ryazanov and C. Strunk for useful discussions. Financial support by the Deutsche Forschungsgemeinschaft (GRK 638 at Regensburg University) is gratefully acknowledged.

-
- ¹ B. D. Josephson, Phys. Lett. **1**, 251 (1962).
 - ² K. K. Likharev, Rev. Mod. Phys. **51**, 101 (1979).
 - ³ M. Tinkham, *Introduction to Superconductivity* (McGraw-Hill, New York, 1996).
 - ⁴ A. A. Golubov, M. Yu. Kupriyanov, and E. Il'ichev, Rev. Mod. Phys. **76**, 411 (2004).
 - ⁵ M. R. Buitelaar, W. Belzig, T. Nussbaumer, B. Babic, C. Bruder, and C. Schönberger, Phys. Rev. Lett. **91**, 057005 (2003).
 - ⁶ P. Jarillo-Herrero, J.A. van Dam, and L.P. Kouwenhoven, Nature **439**, 953 (2006).
 - ⁷ H.I. Jorgensen, K. Grove-Rasmussen, T. Novotny, K. Flensberg, and P.E. Lindelof, Phys. Rev. Lett. **96**, 207003 (2006).
 - ⁸ L.I. Glazman and K.A. Matveev, Pis'ma Zh. Eksp. Teor. Fiz. **49**, 570 (1989) [JETP Lett. **49**, 659 (1989)].
 - ⁹ C. W. J. Beenakker and H. van Houten, in *Single-electron Tunneling and Mesoscopic Devices*, edited by H. Koch and H. Lübbig, p. 175 (Springer, Berlin, 1992).
 - ¹⁰ C.W.J. Beenakker, Phys. Rev. Lett. **67**, 3836 (1991); in *Transport Phenomena in Mesoscopic Systems*, edited by H. Fukuyama and T. Ando, p. 235 (Springer, Berlin 1992).
 - ¹¹ J.-P. Cleuziou, W. Wernsdorfer, V. Bouchiat, T. Oндарку and M. Monthieux, Nature Nanotechnology **1**, 53 (2006).
 - ¹² A. A. Abrikosov and L. P. Gorkov, Zh. Eksp. Teor. Fiz. **39**, 1781 (1960) [Sov. Phys. JETP **12**, 1243 (1961)].
 - ¹³ K. Maki, in *Superconductivity*, edited by R. D. Parks (Dekker, New York, V.2, 1969); K. Maki and P. Fulde, Phys. Rev. **140**, A1586 (1965).
 - ¹⁴ A.I. Larkin and Yu.N. Ovchinnikov, Zh. Eksp. Teor. Fiz. **61**, 2147 (1971) [Sov. Phys. JETP **34**, 1144 (1972)].
 - ¹⁵ A.V. Zaitsev and D. V. Averin, Phys. Rev. Lett. **80**, 3602 (1998).
 - ¹⁶ J. C. Cuevas and W. Belzig, Phys. Rev. B **70**, 214512 (2004).
 - ¹⁷ I.O. Kulik, Zh. Eksp. Teor. Fiz. **57**, 1745 (1969) [Sov. Phys. JETP **30**, 944 (1969)]; C. Ishii, Prog. Theor. Phys. **44**, 1525. (1970).
 - ¹⁸ This follows from the theory of A.A. Golubov and M.Yu. Kupriyanov, Physica C **259**, 27 (1996), generalizing the results of Ref.22 to disordered superconductors.
 - ¹⁹ A.F. Andreev, Zh. Eksp. Teor. Fiz. **46**, 1823 (1964) [Sov. Phys. JETP **19**, 1228 (1964)].
 - ²⁰ P.W. Brouwer and C.W.J. Beenakker, Chaos, Solitons and Fractals **8**, 1249 (1997).
 - ²¹ G. Eilenberger, Z. Phys. **214**, 195 (1968); A.I. Larkin and Yu.N. Ovchinnikov, Zh. Eksp. Teor. Fiz. **55**, 2262 (1968) [Sov. Phys. JETP **28**, 1200 (1969)]; K.D. Usadel, Phys. Rev. Lett. **25**, 507 (1970)
 - ²² G.E. Blonder, M. Tinkham, and T.M. Klapwijk, Phys. Rev. B **25**, 4515 (1982).