



ELSEVIER

Contents lists available at [ScienceDirect](http://ScienceDirect.com)

Journal of Ethnopharmacology

journal homepage: www.elsevier.com/locate/jep

Is aristolochic acid nephropathy a widespread problem in developing countries? ☆

A case study of *Aristolochia indica* L. in Bangladesh using an ethnobotanical–phytochemical approachJohanna Michl^a, Hannah M. Jennings^a, Geoffrey C. Kite^b, Martin J. Ingrouille^c,
Monique S.J. Simmonds^b, Michael Heinrich^{a,d,*}^a Centre for Pharmacognosy and Phytotherapy, UCL School of Pharmacy, University of London, 29–39 Brunswick Square, London WC1N 1AX, United Kingdom^b Royal Botanic Gardens, Kew, Richmond, Surrey TW9 3AB, United Kingdom^c Birkbeck College, University of London, Malet Street, London WC1E 7HX, United Kingdom^d King Abdulaziz University, 21589 Jeddah, Kingdom of Saudi Arabia

ARTICLE INFO

Article history:

Received 24 April 2013

Received in revised form

12 June 2013

Accepted 13 June 2013

Available online 24 June 2013

Keywords:

Metabolomics

Aristolochic acid

Toxicity

Kidney

Bangladesh

Aristolochia indica

ABSTRACT

Ethnopharmacological relevance: Species of *Aristolochia* are associated with aristolochic acid nephropathy (AAN), a renal interstitial fibrosis and upper urinary tract cancer (UUC). Aristolochic acid nephropathy has been reported in ten countries but its true incidence is unknown and most likely underestimated. By combining an ethnobotanical and phytochemical approach we provide evidence for the risk of AAN occurring in Bangladesh. More specifically, we assess the intra-specific variation of aristolochic acid analogues in medicinally used *Aristolochia indica* samples from Bangladesh.

Materials and methods: Ethnobotanical information was collected from 16 *kaviraj*es (traditional healers) in different study locations in Bangladesh. Plant samples were obtained from native habitats, botanical gardens, herbal markets and pharmaceutical companies. The samples were extracted using 70% methanol and were analysed using LC–DAD–MS and ¹H–NMR.

Results: Roots as well as leaves are commonly used for symptoms such as snake bites and sexual problems. Among the informants knowledge about toxicity or side effects is very limited and *Aristolochia indica* is often administered in very high doses. Replacement of *Aristolochia indica* with other medicinal plants such as *Rauvolfia serpentina* (L.) Benth. ex Kurz was common. *Aristolochia indica* samples contained a variety of aristolochic acid analogues such as aristolochic acid I, aristolochic acid II, cepharadione A and related compounds.

Conclusions: AAN cases are likely to occur in Bangladesh and more awareness needs to be raised about the health risks associated with the use of *Aristolochia indica* and other species of *Aristolochia* as herbal medicines.

© 2013 The Authors. Published by Elsevier Ireland Ltd. All rights reserved.

Abbreviations: A, alstonine; AA, aristolochic acid; AAA, aristolochic acid analogue; AAN, aristolochic acid nephropathy; AL, aristolactam; BA, benzoic acid; BEN, Balkan endemic nephropathy; COSY, correlation spectroscopy; CP, commercial product; D₂O, deuterated water; EBC, economic botany collection; ESI, electrospray ionisation; LC–DAD–MS, liquid chromatography–diode array detector–mass spectrometry; LC–MS, liquid chromatography–mass spectrometry; GNP, gross national product; HMBC, heteronuclear multiple-bond correlation spectroscopy; HMQC, heteronuclear multiple-quantum correlation spectroscopy; K₂HPO₄, di-potassium hydrogen orthophosphate; KH₂PO₄, potassium dihydrogen orthophosphate; J-RES, J-resolved; MeOD, deuterated methanol; MS, market sample; *m/z*, mass-to-charge-ratio; NMR, nuclear magnetic resonance; NOESY, nuclear Overhauser effect spectroscopy; PC, principle component; PCA, principle component analysis; PPM, parts per million; PTFE, polyfluoroethylene; RBG, Royal Botanic Gardens, Kew; RPM, revolutions per minute; S, serpentine; *t_R*, retention time; TSP, 3-(tetramethylsilyl)propionic-2,2,3,3-*d*4 acid, sodium salt; UUC, upper urinary tract cancer; UV, ultraviolet

☆ This is an open-access article distributed under the terms of the Creative Commons Attribution License, which permits unrestricted use, distribution, and reproduction in any medium, provided the original author and source are credited.

* Corresponding author at: Centre for Pharmacognosy and Phytotherapy, UCL School of Pharmacy, University of London, 29–39 Brunswick Square, London WC1N 1AX, United Kingdom. Tel.: +44 20 7753 5844; fax: +44 20 7753 5909.

E-mail address: m.heinrich@ucl.ac.uk (M. Heinrich).

1. Introduction

Species of *Aristolochia* are known to cause aristolochic acid nephropathy (AAN), a renal interstitial fibrosis, which is associated with a high incidence of upper urinary tract cancer (UUC) (Nortier et al., 2000). It was initially reported in a Belgian cohort of over 100 patients after the intake of slimming pills containing a Chinese herb, *Aristolochia fangchi* Wu ex L.D. Chow & S.M. Hwang (Vanherweghem, 1998). Following this tragic incidence, species of *Aristolochia* were banned in many countries, including Germany, the UK, USA, Australia and Canada. However, drugs and medical preparations from species of *Aristolochia* are used widely (and often legally) in many countries and can be bought via the Internet (Gold and Slone, 2003; Schaneberg and Khan, 2004; Heinrich et al., 2009). So far AAN has only been reported in 15 countries but its true incidence is unknown and probably underestimated (National Toxicology Program, 2008).

Evidence for AAN being a major public health problem has only been provided for two small regions worldwide, specifically the Balkan region and Taiwan. In the Balkan region, the dietary intake of flour contaminated with *Aristolochia clematitis* L. seeds is proposed as the environmental causal factor for Balkan Endemic Nephropathy (BEN) (Grollman et al., 2007; Jelakovic et al., 2012). This disease has affected thousands of patients in the Danube basin and its clinical expressions and pathological lesions are strikingly similar to AAN (De Broe, 2012). Furthermore, recent research has shown that exposure to species of *Aristolochia* used in traditional Chinese medicines contributes significantly to the incidence of upper urothelial cancer (UUC) in Taiwan (Chen et al., 2012). However, it is likely that AAN and UUC are also prevalent in other countries where species of *Aristolochia* are used (Heinrich et al., 2009), creating a global public health problem of considerable but largely unknown magnitude (Debelle et al., 2008; Grollman et al., 2009; Grollman, 2013).

Ethnobotanical studies indicate that the Indian subcontinent is one of the hot spots for *Aristolochia* use (Heinrich et al., 2009). *Aristolochia indica* L. was found to be the most frequently cited species in the literature. A possible association between chronic interstitial fibrosis in Indians and the intake of *Aristolochia* has been proposed before (Vanherweghem, 1997; Debelle et al., 2008; Grollman et al., 2009). Therefore, it is likely that the medicinal use of *Aristolochia indica* results in a large number of undiagnosed AAN and UUC cases on the Indian subcontinent.

This work focuses specifically on the uses of *Aristolochia indica* in Bangladesh and their implications on public health. Bangladesh was chosen as a case study since *Aristolochia indica*, the most frequently cited *Aristolochia* species is native there. However, only fewer ethnobotanical reports on *Aristolochia indica* uses exist in comparison to India. While four species of *Aristolochia* are found in Bangladesh (*Aristolochia elegans* Mast., *Aristolochia indica* L., *Aristolochia saccata* Wall. and *Aristolochia acuminata* Lam., Ahmed et al., 2007), *Aristolochia indica* is the most widely distributed species and has the greatest importance as a medicinal plant (Heinrich et al., 2009; Mollik et al., 2010).

In Bangladesh only 1.5% of the gross national product (GNP) is spent on health care (Rahman, 2005). Non-communicable diseases including kidney disease are not priorities and patient care is deficient. The number of nephrologists in Bangladesh is limited and renal disease care is only available in six public hospitals and 10 private hospitals (Rashid, 2004). An overburdened health-care system with few renal facilities means that recording cases is not a priority. Since there are few statistics regarding kidney disease (Jha, 2009) it is not surprising that no records of AAN cases in Bangladesh exist. In addition to limited data recording there is a lack of knowledge regarding the condition and its causes. Furthermore, the medical care offered is rarely integrated with

herbal medicine and it is unlikely that the connection between the use of *Aristolochia* as a medicine and kidney disease would be made.

The use of herbal medicine in Bangladesh is widespread with estimates of up to 75% of the population using complementary and alternative medicines to manage their health needs (Ghani and Pasha, 2004). In addition to allopathic medicine a range of medical practices exist (and overlap) in Bangladesh including Ayurvedic, Unani, homoeopathy, popular and spiritual medicines. *Kavirajes* are 'folk' or 'traditional' healers that use plant preparations to treat various ailments (Rahman et al., 2010). The practices of *kavirajes* are varied as they draw on Ayurvedic, Unani and spiritual models of healing (either in combination or exclusively). They are frequently found across Bangladesh catering to the primary health care needs of a large proportion of the population (Mollik et al., 2010).

The aim of this study was to assess the risk of AAN occurring in Bangladesh by combining an ethnobotanical and phytochemical approach. More specifically, we assessed the importance of *Aristolochia indica*, its medicinal uses and the knowledge about the health risks associated with its use by carrying out interviews with healers (*kavirajes*) in different study locations in Bangladesh. Furthermore, we studied the intraspecific phytochemical variation of *Aristolochia indica* samples obtained in Bangladesh using metabolomic methods based on LC-DAD-MS and ¹H-NMR (Michl et al., 2011). We especially focused on the content of aristolochic acid analogues (AAAs), the group of compounds known to be responsible for the nephrotoxic and carcinogenic effects of *Aristolochia* species (National Toxicology Program, 2011; Kumar et al., 2003).

2. Materials and methods

2.1. Ethnobotanical survey

Prior to the start of the fieldwork ethical approval was obtained from the School of Pharmacy's (University of London, UK) Ethics Committee (January 2012).

Ethnobotanical information was collected during two field studies in February 2012 and August 2012. Semi-structured interviews were carried out with 16 healers (*kavirajes*) in different study locations in Bangladesh (Rajshahi, Dhaka, Natore, Tangail, Bandarban and Sylhet, Fig. 1) in order to obtain data representative for the whole of Bangladesh. The interviews were carried out in Bengali with the help of a translator and generally took place in public spaces such as markets. Informant consent was obtained prior to the interviews. However, the aims of the study relating to the toxicity of *Aristolochia indica* could not be fully disclosed prior to the interview. Informants were asked to list medicinal uses of *Aristolochia indica* and were then asked to provide more detailed information about these uses. The questions covered in the interviews included vernacular names of the species, the parts used (leaves, roots, stems, fruits, seeds), the mode of preparation and administration, dose, duration of treatment and knowledge about toxicity or side effects. All informants were male, however they belonged to different ethnic groups: Bengali (10), Marma (1), Santal (2), Tripura (1), Mandai (1) and Bongshi (1). All informants were asked whether they would be willing to provide a sample of *Aristolochia indica* or to identify the plant in photographs if plant material was not available.

2.2. Plant material and herbal formulations

Aristolochia indica samples were collected either in their natural habitat or were obtained from botanical gardens. Voucher specimens of samples 3 (J. Michl BI-21582) and 4 (J. Michl

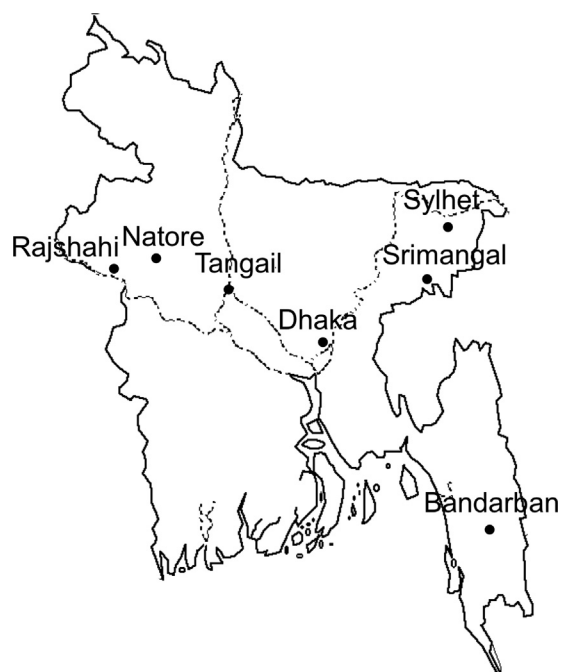


Fig. 1. Map of different study locations in Bangladesh.

BI-21583) were identified by Dr. Martin Ingrouille and were deposited in the Herbarium, Royal Botanic Gardens, Kew (RBG Kew, UK). Root samples which were traded under the name '*Ishwarmul*' (a common name for *Aristolochia indica*) were purchased from herbal markets. Further root samples were obtained from the Economic Botany Collection (RBG Kew, UK). The identity of these root samples was determined by their phytochemical profile. Commercial preparations obtained from phytopharmaceutical companies or from *kavirajes* were included as well. These preparations include two aqueous extracts, one semi-solid paste used to prepare pills containing *Aristolochia indica* as well as a variety of other plants such as *Cinnamomum cassia* L., *Eclipta erecta* L. and *Curcuma phaeocaulis* Valetton. Three samples (4, 10 and 11, Table 1) were extracted and analysed in triplicate in order to assess the reproducibility of the extraction and processing method. Information about the samples is shown in Table 1.

2.3. Chemicals

All chemical reagents used were of analytical grade. Deuterated water (D_2O , 99.9%) and deuterated methanol (MeOD, 99.8%) were obtained from Cambridge Isotope Laboratories, Inc. (Andover, MA). 3-(Tetramethylsilyl)propionic-2,2,3,3- d_4 acid, sodium salt (TSP, 98%) was obtained from Sigma–Aldrich (St. Louis, MO). Dipotassium hydrogen orthophosphate (K_2HPO_4) and potassium dihydrogen orthophosphate (KH_2PO_4) were obtained from BDH Laboratory Supplies (Poole, UK).

2.4. Preparation of extracts

The dried plant material was ground in a mortar and extracted with 70% methanol in a microtube for 16 h (50 mg/ml). The extracts were then centrifuged (10 min, 10 000 rpm) and filtered using a 0.45 μm PTFE filter. The liquid Ayurvedic formulations (Samples 16–17) were filtered using 0.45 μm PTFE filters and the filtrate was used for LC-MS analysis. An aliquot (700 μl) of each extract or formulation was transferred to LC-MS vials.

Table 1

Information about '*Ishwarmul*' samples obtained from Bangladesh or from the Economic Botany Collection, Royal Botanic Gardens, Kew, UK (CP, commercial product; MS, market sample; EBC, Economic Botany Collection).

Plant part	Source	Place of collection	Voucher number
1 Stem	Wild	Tangail	BI-21568
2 Leaf	Wild	Tangail	BI-21580
Stem			
Root			
3 Leaf	Cultivated	Rajshahi	BI-21582 (K)
Stem			
Root			
4 Leaf	Cultivated	Rajshahi	BI-21583 (K)
5 Stem	Cultivated	Natore	BI-21571
6 Stem	Cultivated	Natore	BI-21572
7 Stem	Cultivated	Natore	BI-21573
8 Stem	Cultivated	Rajshahi	BI-21574
9 Fruit	Cultivated	Rajshahi	BI-21584
10 Root	MS	Dhaka	BI-21570
11 Root	MS	Natore	BI-21569
12 Root	MS	Dhaka	BI-21577
13 Root	MS	EBC (Sri Lanka)	BI-21555, EBC-45619
14 Root	MS	EBC (India)	BI-21553, EBC-45617
15 Root	MS	EBC (India)	BI-21551, EBC-45616
16 Liquid formulation	CP	Rajshahi	BI-21576
17 Liquid formulation	CP	Rajshahi	BI-21585
18 Paste	CP	Tangail	BI-21581

2.5. LC-DAD-MS analysis

The analysis was carried out using a Thermo Scientific LC-DAD-ESI-MS system (Thermo Scientific, MA, USA) consisting of an 'Accela' liquid chromatograph with diode array detector and an 'LTQ-Orbitrap XL' hybrid linear ion trap-orbitrap mass spectrometer. Chromatography was performed on a 150 mm \times 3 mm, 3 μm Phenomenex Luna C18 column using a 400 $\mu l/min$ flow rate. The separation was obtained using the following linear mobile phase gradient: 0 min: 90% A, 0% B, 10% C; 50 min: 0% A, 90% B, 10% C, 55 min: 0% A, 90% B, 10% C, 57 min 90% A, 0% B, 10% C, 60 min 90% A, 0% B, 10% C (A: water, B: methanol, C: acetone containing 1% formic acid). The injection volume was 5 μl . Ammonia solution was added post column at a flow rate of 0.1 $\mu l/min$. The mass spectrometer was fitted with an electrospray source (Thermo 'Ion Max') operated in positive mode at a source voltage of 3.5 kV using sheath and auxiliary nitrogen flow rates of 60 and 20 units, respectively, and a capillary temperature of 300 $^{\circ}C$. High-resolution MS1 scanning was performed in the orbitrap (m/z 250–2000; resolution 30 000). Low-resolution data dependent MS2 and MS3 scans were undertaken in the linear ion trap (isolation width 4 m/z units; collision energy 35%).

2.6. 1H -NMR analysis

After LC-DAD-MS analysis the samples were dried at room temperature and residual water was removed using lyophilisation. The plant extracts were redissolved in 490 μl MeOD containing 0.01% TSP and 210 μl KH_2PO_4 buffer (pH=6.0). The solutions were transferred into 5 mm NMR tubes. 1H -NMR spectra were recorded on a Bruker Avance 500 spectrometer operating at 500.13 MHz. For each sample 256 transients were recorded as 65 K data points with a spectral width of 10 330 Hz using 3.17 s acquisition time, 1.0 s relaxation delay, and a 30 $^{\circ}$ pulse angle. FIDs were Fourier transformed with LB=0.3 Hz. The spectra were referenced to internal TSP. 1H -NMR spectra were manually corrected for phase and baseline distortions using Topspin (v 1.3., BrukerBiospin).

2.7. Data reduction and multivariate data analysis

The ¹H-NMR spectra in the range of 0.1–10 ppm were divided into 990 regions (“buckets”) of 0.01 ppm using AMIX software (v. 3.5.5., BrukerBiospin) and the signal intensity in each region was integrated. Water signals (4.65–5.15 ppm) and residual solvent signals (3.25–3.4 ppm) were excluded. The data could then be imported into Microsoft Excel for the addition of labels and normalisation. The spectral areas were normalised to the total sum of the spectral integral to avoid dilution effects.

Filtering, peak extraction, chromatogram de-convolution and peak alignment of the high-resolution LC-MS data were performed automatically using Mzmine 2 (<http://mzmine.sourceforge.net>). Peaks between 2 and 40 min retention time with a minimum peak intensity of 500 000 and *m/z* between 250 and 650 were extracted. The resulting data set was normalised to the total raw signal.

Principal component analysis (PCA) was carried out on the normalised and pareto scaled dataset (for both, LC-MS and ¹H-NMR data sets) using the software SIMCA P+ (v. 12, Umetrics, Umea, Sweden).

For the analysis of aristolochic acid content peaks between 2 and 40 min retention time with a minimum peak intensity of 200 000 and *m/z* between 250 and 650 were extracted. The dataset was not normalised.

2.8. Metabolite identification assignment

For the peaks extracted by Mzmine 2, the ion species (i.e. adduct) was determined so as to obtain an experimental accurate molecular mass. This was then searched against the CRC Dictionary of Natural Products to identify candidate compounds having molecular masses within 5 ppm of the experimental value. The identity of characteristic biomarkers was verified using 2D ¹H-NMR experiments (¹H-¹H J-RES, ¹H-¹H COSY, ¹H-¹H NOESY, ¹H-¹³C HMQC and ¹H-¹³C HMBC) on selected samples. AA I, AA II, AA III, AA IIIa, AA IV, AA D and AL I were identified by comparison to reference standards. Further compounds were identified by comparing accurate mass data to an in-house database (UCL School of Pharmacy, London, UK) consisting of 193 aristolochic acid analogues that have previously been isolated from natural sources. Putative assignments for those AAAs were made based on their accurate mass, retention time, mass fragmentation and UV spectra.

3. Results and discussion

3.1. Importance of *Aristolochia indica* in Bangladesh

Aristolochia indica is widely available in herbal markets and the majority of healers were knowledgeable about its medicinal uses (11 out of 16 *kavirajes*). Local names include *ishwarmul*, *ghorth*, *tang gway sobawai*, and *rudho jota* (Table 2). While local names vary across ethnic groups and between different regions of Bangladesh *ishwarmul* was the most frequently reported local name. It is noteworthy that the name *ishwarmul* is also used for other plants besides *Aristolochia indica*, such as *Pholidota pallida* Lindl. (Orchidaceae).

Aristolochia indica is generally considered to be a very potent medicinal plant. This is also reflected in the meaning of the Bengali name *ishwarmul*, which can be translated as ‘god-given plant’. Numerous myths and beliefs about the plant exist, most of them in relation to snakes. One example is the belief that *Aristolochia indica* growing in the garden prevents snakes from entering a house.

While the collection of *Aristolochia indica* in the wild seems to be common, three informants reported that the plant is now very rare. The fruits of *Aristolochia indica* were reported to be used as food in the past, when the plant was commonly found in its natural habitat. This reported use is particularly concerning, given that it is likely that high doses were consumed and that fruits often accumulate high amounts of aristolochic acid analogues.

3.2. Medicinal uses

Ethnobotanical data were collected from 11 *kavirajes*. The healers interviewed during this study came from a variety of ethnic backgrounds and practiced different medical systems, such as Unani or Ayurveda. All parts of the plant are used medicinally. A variety of medicinal uses were reported for *Aristolochia indica* (Table 2). However snake bites (5 use reports) was the most frequently reported use. Other reported uses include sexual problems (3), gastric problems (2) and the use as a tonic (2). *Aristolochia* species are used in childbirth or as an abortifacient in many parts of the world, including Europe (Heinrich et al., 2009). Interestingly, these uses were not reported by any of the informants in this study.

3.3. Doses and formulations

Formulations and doses used are rarely reported in the ethnobotanical literature. However, due to the species’ toxic potential, detailed records on the commonly used dose ranges were recorded. A variety of doses and formulations were reported by the *kavirajes* (Table 2). In terms of formulations, in most cases *Aristolochia indica* plant material (roots, leaves or stems) was used directly rather than as an extract. The most frequently reported formulation was a pill made of different parts of *Aristolochia indica*, often in combination with other plants such as *Asparagus racemosus* Willd., *Withania somnifera* (L.) Dunal or *Piper nigrum* L. and honey or sugar. Furthermore the use of pills containing *Aristolochia indica* in combination with chemicals obtained from local markets was reported. The identity of these chemicals is unknown but might be of toxicological concern, especially since this formulation was used for pneumonia in children. Other common formulations include the use of juice obtained from *Aristolochia indica* roots or leaves or the intake of the plant powder with small amounts of water. Interestingly, extraction of the plant material using infusion with water was only reported by one *kaviraj*. However, phytopharmaceutical companies frequently manufacture water extracts containing *Aristolochia indica* and a variety of other medicinal plants according to Ayurvedic recipes.

The reported doses varied greatly. Extremely high doses were reported, such as the use of 25–50 g of root powder against snakebites or the ingestion of 3 g of root powder per day for one month as a tonic. Furthermore, *Aristolochia indica* is sometimes used for a long duration. One example is the use of 3 pills made of *Aristolochia indica* leaves per day for 4 month against parasitic worms. Assuming that one pill contains around 0.5 g of plant material this results in an estimated total dose of 180 g. However, in other cases the reported doses were extremely small or the plant material was applied topically. One informant reported that small pieces of roots are often worn around the neck in an amulet.

3.4. Reports of toxicity and side effects

In general knowledge about toxicity and side effects was very limited (Table 2) and the majority of informants reported no side effects or toxic effects (8 out of 11 *kavirajes*). Sleepiness, gastric problems and rashes were reported as rare side effects occurring in a few of the patients. Interestingly, one informant was aware of toxic effects of *Aristolochia indica* leaves, but reported that the roots of the plant are not toxic. However, none of the informants reported nephrotoxicity as a risk resulting from the use of *Aristolochia indica* as a herbal medicine.

3.5. Phytochemical variation in ‘*ishwarmul*’ (*Aristolochia indica* and other taxa) samples

We carried out a metabolomic study of *Aristolochia indica* samples collected from their natural habitat or from botanical

Table 2
Medicinal use reports for *Aristolochia indica*.

Common name	Medicinal use	Plant part	Formulation	Dose and duration of use	Side effects or toxicity	Informant	Location
Ishwarmul	Gonorrhoea	Root	A paste made from <i>Aristolochia indica</i> (root), <i>Rauvolfia serpentina</i> (L.) Benth. ex Kurz (root) and <i>Curcuma longa</i> L. (root)	1 g per day for 1 week	None	Bengali	Natore
Ishwarmul	Snakebites	Root	Powder made from <i>Aristolochia indica</i> (root) and <i>Rauvolfia serpentina serpentina</i> (L.) Benth. ex Kurz (leaf)	25–50 g taken at once	None	Bengali	Natore
	Antihelminthic	Leaf	A pill made from one leaf of <i>Aristolochia incida</i> and one clove (<i>Syzygium aromaticum</i> (L.) Merr. & L.M. Perry)	3 Pills per day for 4 month			
	Leishmaniasis	Leaf	A pill made from two leaves of <i>Aristolochia indica</i> and two leaves 2 leaves of <i>Andrographis paniculata</i> (Burm. f.) Wall. ex Nees	3 Pills per day for 1 month			
	Rheumatic fever	Leaf	A pill made from two leaves of <i>Aristolochia indica</i> and two leaves 2 leaves of <i>Andrographis paniculata</i> (Burm. f.) Wall. ex Nees	2 pills per day for 2 days			
	Gastric problems	Leaf	A pill made from one leaf of <i>Aristolochia incida</i> and one clove (<i>Syzygium aromaticum</i> (L.) Merr. & L.M. Perry). Taken with large amounts of salt.	3 pills per day for 21 days			
	Madness	Root	A small piece of root is worn in an amulet around the neck	1 g			
	Dyspepsia	Whole plant	The whole plant is chopped into pieces. A paste is made with sugar	3 pills per day for 21 days			
	Snakebites	Leaf or root	The roots or leaves of <i>Aristolochia indica</i> are combined with the juice of <i>Asparagus racemosus</i> Willd. (root)	20 ml of juice taken at once			
Ishwarmul	Neurotonic	Root	<i>Aristolochia indica</i> (root) and <i>Withania somnifera</i> (L.) Dunal (root) are taken with milk	3 g per day for 30 days	Leaves may be toxic, roots are not toxic	Bengali	Rajshahi
	Neurotonic	Root	Powder taken with milk and honey	3 g per day for 30 days			
Ishwarmul	Analgetic	Whole plant	Powder	3 g taken 3 times daily for 5–7 days	Gastric problems	Bengali	Rajshahi
	Antibiotic	Whole plant	Powder	3 g taken 3 times daily for 5–7 days			
	Snake bites	Root	Juice obtained for root	1 spoon per day for 2 days			
	Oral infections	Leaf	Fresh leaves are applied topically	1–2 leaves for 7 days			
	Sexually transmitted diseases	Leaf	A paste made from fresh leaves is applied topically	3 g for 30 days			
Ishwarmul	Madness	Root	Juice obtained from root	3 g for 7 days	None	Bengali	Dhaka
Ishwarmul	Sexual problems	Root	The root is made it into a paste with honey, as well as other roots	3 pills for 14 days	Allergic reactions or rashes	Mandai	Tangail
	Sexual problems	Leaf/ root	Juice is made from roots and leaves	one spoonful when necessary			
	Pneumonia	Leaf/ root	Pills made from roots and leaves and two unknown chemicals	2 pills per day for one month			
Ishwarmul	Rheumatic arthritis	Root	Pills made from root powder and honey	2 pills per day for 7–21 days	None	Bongshi	Tangail
Ghorth	Snakebites	Leaf	<i>Aristolochia indica</i> leaves and 7–8 fruits of <i>Piper nigrum</i> L. are made into pills	1 pill	None	Santal	Rajshahi
	Unconsciousness	Leaf	Juice from leaves is dropped into the patients eyes	1–2 drops			
	Sexual problems	Stem	Juice from <i>Aristolochia indica</i> (stem) is combined with juice <i>Asparagus racemosus</i> Willd. (root)	3 drops for 3 days			
Ghorth	Snakebites	Root	pills made of root powder and fruits of <i>Piper nigrum</i> L.	3 pills per day for 3 days	None	Santal	Rajshahi
	Gastric problems	Leaf	Leaves are chewed	3–5 leaves when necessary			
	Madness	Root	Root powder	1 gram per day for one week			
	Madness	Leaf	Leaves are applied topically on the head	3–5 leaves applied for 3–4 h			
Tang gway sobawai	Oedema	Leaf/ root	Roots or leaves are heated to form a paste. The paste is applied topically	5 g applied for up to 3 days	None	Marma	Bandarban
	Jaundice	Leaf/ root	Roots or leaves are heated to form a paste. The paste is applied topically	5 g applied for up to 3 days			
	Mosquito bites or injuries	Leaf/ root	Roots or leaves are heated to form a paste. The paste is applied topically	5 g applied for up to 3 days			
Ishramul	Liver diseases	Leaf	Leaves are boiled with water	500 g in 1 l of water, once a day for 3 days	None	Tripura	Srimangal
	Tonic	Leaf	Leaves are boiled with water	200 g in 2 l of water, once a day for 3 days			

gardens. Root samples, which were traded under the name 'Ishwarmul', and herbal formulations reported to contain *Aristolochia indica* plant material were also included in the analysis.

The phytochemical variation of these samples was studied using LC-MS and ¹H-NMR. A three component PCA model explained 39.8% of the variation in the LC-MS data set (Fig. 2a) and 64.4% of the variation in the ¹H-NMR data set (Fig. 2b).

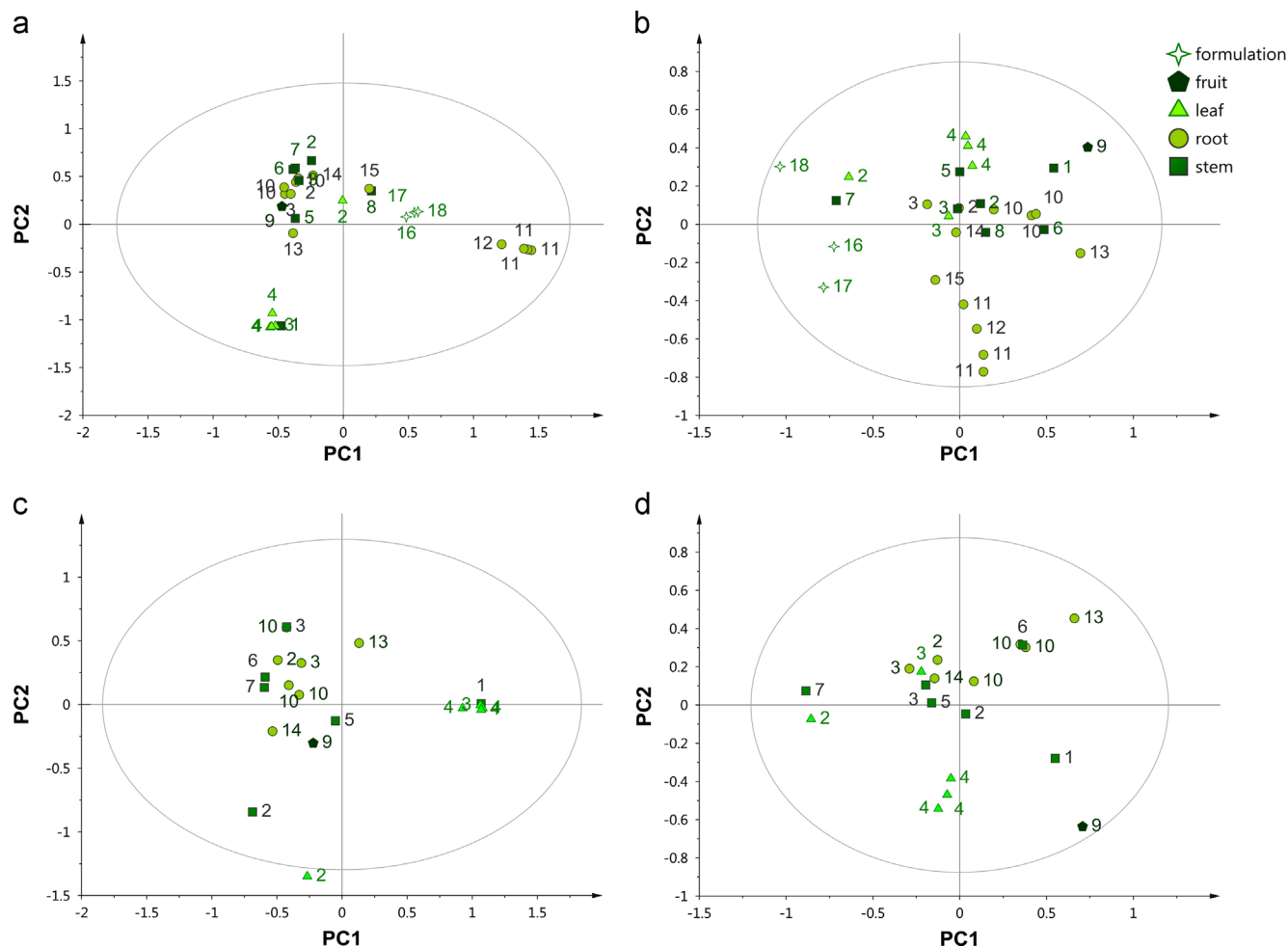


Fig. 2. PCA scores plots based on LC-MS (a) and $^1\text{H-NMR}$ (b) data sets for all obtained 'Ishwarmul' samples (including herbal formulations 16, 17 and 18 and samples from unknown species 8, 11, 12 and 15). PCA scores plots showing the intraspecific variation in *Aristolochia indica* samples based on LC-MS (c) and $^1\text{H-NMR}$ (d) data sets [data normalised to the total raw signal, mean-centred and pareto scaled].

The PCA scores plot for the LC-MS data shows that the samples are clustered into various groups. According to the loadings plot only samples with negative PC1 scores (1, 2, 3, 4, 5, 6, 7, 9, 10, 13 and 14) were characterised by the presence of aristolochic acid I (m/z 359.0870, $t_R=35.93$) and other aristolochic acid analogues. This result suggests that not all analysed samples contained *Aristolochia indica* plant material, even though they were traded under the plants common name 'Ishwarmul.'

Unsurprisingly, the three herbal formulations 16, 17 (two liquid water extracts obtained from phytoceutical companies) and 18 (a semi-solid paste for making pills obtained from a *kaviraj*) form a cluster with positive PC1 scores in the LC-MS data set. The formulations contain a variety of different herbs and are therefore not likely to contain high amounts of aristolochic acids. Examination of the PCA loadings plots showed that the differentiation is caused mainly by a variety of compounds with short retention times (of which sucrose is likely to be a component of the unretained peak at $t_R=2.00$ min giving $[\text{M}+\text{NH}_4]^+$ at m/z 360.1511). The $^1\text{H-NMR}$ data loadings plot is characterised by a variety of overlapping peaks in the carbohydrate region as well as aromatic peaks corresponding to benzoic acid (δ 7.95 (dd, $J=7.5$ Hz, $J=1.5$ Hz), δ 7.54 (t, $J=7.5$ Hz), δ 7.45 (t, $J=7.5$ Hz)). This compound was presumably added to the liquid extracts as a preservative agent.

However, more surprisingly, samples 11 and 12, as well as 8 and 15 do not contain aristolochic acid analogues and form clusters with positive PC1 scores in the LC-MS data set. The

metabolomic analysis indicates that these samples are from another species, which has been misidentified as *Aristolochia indica* or have been deliberately replaced. According to PC1 loadings plot (LC-MS data) samples 11 and 12 are characterised by a peak giving $[\text{M}+\text{H}]^+$ at m/z 349.1554 ($t_R=17.93$ min). This ion predicted a molecular formula of $\text{C}_{21}\text{H}_{20}\text{N}_2\text{O}_3$ that suggested alstonine and/or its 20-epimer serpentine as candidates. The $^1\text{H-NMR}$ peaks indicated by PCA analysis to be characteristic of these root samples were in accordance with alstonine and serpentine (Wachsmuth and Matusch, 2002). The two compounds have almost identical $^1\text{H-NMR}$ spectra (δ 8.51 (d, $J=6.5$ Hz), δ 8.40 (d, $J=8.5$ Hz), δ 8.37 (d, $J=6.6$ Hz), δ 7.81 (d, $J=8.1$), δ 7.76 (m), δ 7.75 (d, $J=1.4$ Hz), δ 7.49 (m), δ 4.95 (m), δ 4.79 (m), δ 4.76 (dd, $J=12.5, 5.5$ Hz), δ 4.66 (m), δ 3.82 (s), δ 3.22 (d, $J=5.5$ Hz), δ 3.15 (d, $J=6.4$ Hz), δ 2.82/ δ 2.79 (m) and δ 1.38 (s)) apart from a small difference in chemical shifts for H-20 (δ 2.81 vs. δ 2.79). A plant commonly used for snakebites, insomnia and insanity in Ayurvedic medicine is *Rauvolfia serpentina* (L.) Benth. ex Kurz (Keshavan, 2011). Local names in Bangladesh include chandramul and sarpagandha. The presence of alstonine and serpentine in samples 11 and 12 would be consistent with roots of this species.

Samples 8 and 15 have very similar phytochemical profiles but do not contain *Rauvolfia* alkaloids or aristolochic acid analogues. This indicates that these samples belong to a, third unidentified species.

LC-MS total ion chromatograms and $^1\text{H-NMR}$ spectra representative for the different groups of samples (*Aristolochia indica*

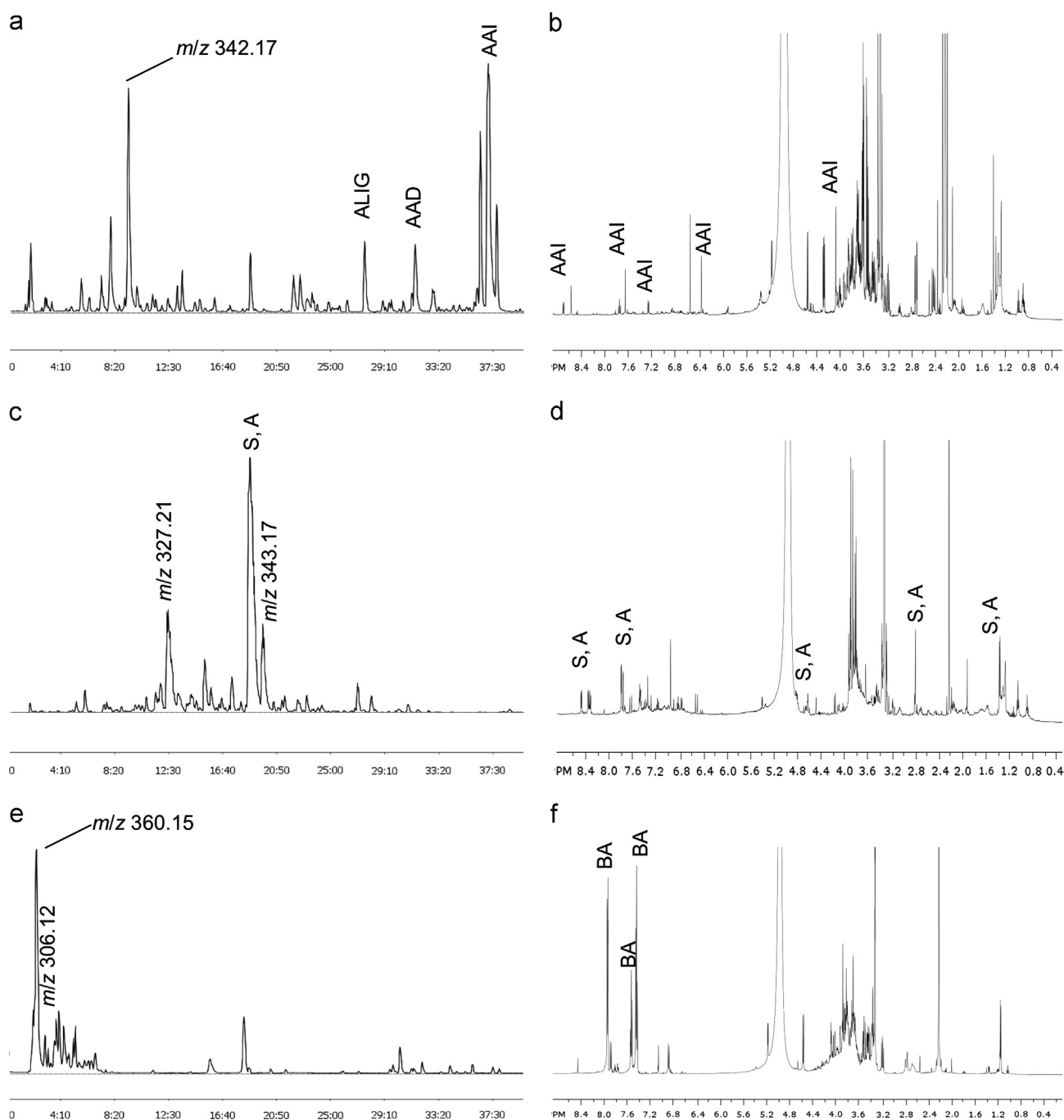


Fig. 3. LC-MS total ion current chromatograms and $^1\text{H-NMR}$ spectra for samples 3 (leaf) (a, b), 11 (root) (c, d) and 16 (liquid formulation) (e, f) [AAI, aristolochic acid I; AAD, aristolochic acid D; ALIG, aristolactam I *N*- β -D-glucoside; BA, benzoic acid; S, serpentine; A, alstonine].

samples, *Rauvolfia serpentina* samples and herbal formulations) and are shown in Fig. 3.

The result of the metabolomic analysis indicates that replacements or misidentifications of plant species occur frequently in Bangladesh. It also highlights that metabolomic analysis is a suitable tool for the authentication of herbal medicines, allowing the identification of replacements or contaminated plant material.

3.6. Intraspecific variation in *Aristolochia indica* samples

Samples 8, 11, 12, 15, 16, 17 and 18 were removed from the analysis and a PCA model of the remaining samples was calculated based on their LC-MS and $^1\text{H-NMR}$ data (Fig. 2c and d). A 3-component PCA model explained 58.2% of the variation in the LC-MS dataset and 59.8%

of the variation in the $^1\text{H-NMR}$ dataset. Samples 1 (stem), 2 (leaf), 2 (stem), 3 (leaf) and 4 (leaf) are shown as outliers in the PCA scores plot of the LC-MS data set. While the cluster consisting of samples 1 (stem), 3 (leaf) and 4 (leaf) was characterised by high amounts of aristolochic acid I ($[\text{M}+\text{NH}_4]^+$, m/z 359.0870, $t_R=35.93$ min), aristolactam I *N*- β -D-glucoside ($[\text{M}+\text{H}]^+$, m/z 456.1285, $t_R=26.53$ min) and aristolactam I ($[\text{M}+\text{H}]^+$, m/z 294.0759, $t_R=36.18$ min), samples 2 (stem) and 2 (leaf) had high amounts of aristolochic acid II ($t_R=34.09$ min, m/z 329.0766). It is noteworthy that these outliers consisted of fresh, green plant material. In contrast, samples, which were obtained from older, woody stems or roots (2, 3, 5, 6, 7, 10, 13 and 14) were located in the centre of the scores plot. These samples were characterised by smaller amounts of aristolochic acid analogues and a major metabolite giving m/z 342.1706 ($t_R=7.38$ min). Among the possible candidate

Table 3
Retention times, UV maxima and fragmentation ions of identified aristolochic acid analogues. The compounds are sorted by descending average peak areas across all samples.

No.	Compound	Retention time (min)	[M+H] ⁺ (m/z)	[M+NH ₄] ⁺ (m/z)	Fragmentation ions (m/z) ^c	UV maxima (nm)
1	Aristolochic acid I ^a	35.93		359.0870	324, 296, 294, 268	252, 320,392
2	Aristolochic acid II ^a	34.09		329.0766	294, 268, 250, 238	250, 300, 356
3	Cepharadione A ^b	33.61	306.0759		288, 278, 248, 220	238, 301, 314,439
4	Aristolactam I; N-β-D-glucopyranoside ^b	26.53	456.1285		438, 336, 294, 279	237, 259, 291, 330, 403
5	Aristolactam AII ^b		266.0808		251, 223, 195	239, 275, 314, 388
6	Aristolochic acid IV ^a	38:29		389.0987	326, 311, 283	237, 327, 405
7	Aristolactam III ^b	29.60	294.0758		279,251	244, 316, 450
8	Aristolochic acid D ^a	30.37		375.0821	357, 312, 297, 267	238, 329, 408
9	Aristolactam I ^a	36.18	294.0759		279, 251	236, 291, 328, 391
10	Aristolochic acid IIIa ^a	27.41		345.0713	327, 310, 284, 254	235, 306, 400
11	Aristolactam IVa ^b	39.42	310.0706		292, 277	240, 286, 298, 344, 420
12	Aristolactam AIII ^b	29.44	296.0912		278, 263, 250	237, 278, 391
13	Aristoloterpenate I ^b	25.01	558.2112		342, 297, 265	235, 279, 396
14	Aristolactam II; N-β-D-glucopyranoside ^b	25.22	426.1180		408, 306, 264, 234	235, 265, 277, 288, 327, 391
15	Ariskanin B ^b	21.12	344.0768		327, 309	235, 280, 426
16	9-Methoxyaristolactam II ^b	26.21	294.0757		279, 251	235, 272, 491
17	Aristolactam II ^b	34.73	264.0654		234, 206	235, 277, 325, 374, 392
18	Aristolactam IIIa; N-β-D-glucopyranoside ^b	22.58	442.1130		424, 322, 280, 250	237, 258, 293, 326, 403
19	Norcepharadione A ^b	31.60	292.0601		274, 264, 246	235, 280, 439
20	Aristolactam Ia; N-β-D-glucopyranoside ^b	16.35	442.1130		424, 322, 280, 222	234, 266, 283, 336, 403
21	Aristolochic acid Ia ^b	30.76		345.0717	327, 310, 284, 254	235, 320, 392

^a Identified by comparison with reference standard.

^b Tentative assignment based on accurate mass, UV spectra and mass fragmentation.

^c Fragmentation ions were extracted from MS2 and MS3 scans.

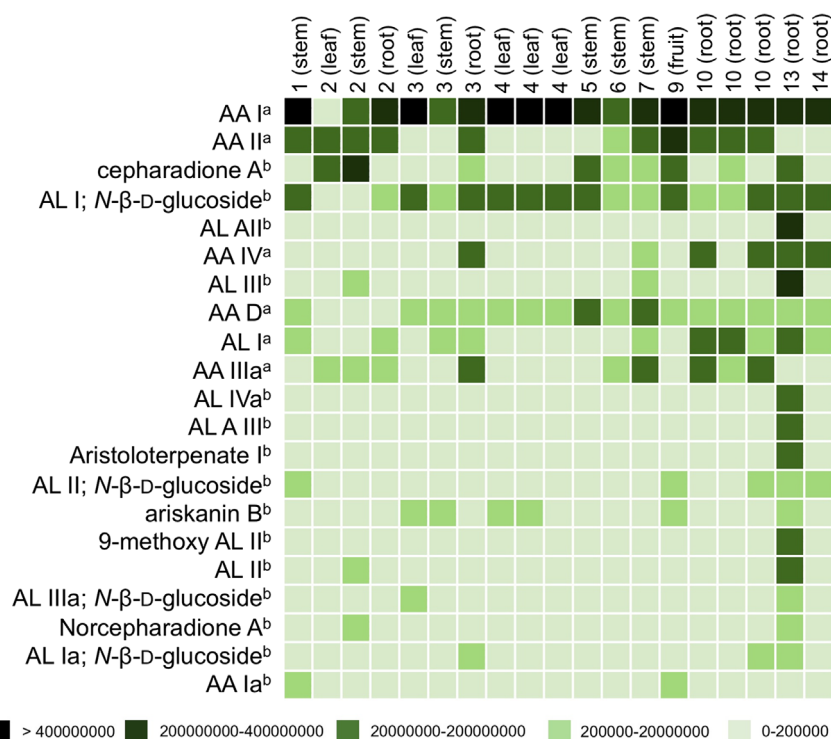


Fig. 4. Heat map comparing relative LC-MS peak areas of identified aristolochic acid analogues. Information about the origin of the samples is given in Table 1. The compounds are sorted by descending average peak areas across all samples [^a identified by comparison with reference standard; ^b tentative assignment based on accurate mass, UV spectra and mass fragmentation].

compounds suggested by the formula of this ion (C₂₀H₂₄NO₄⁺; 1.8 ppm) is the aporphine derivatives magnoflorine. The compound showed the same MS/MS spectrum as the ion assigned to M⁺ of magnoflorine in an LC-MS analysis of a leaf extract of *Magnolia grandiflora* L. held in the analytical archives at RBG Kew.

These results suggest that the intraspecific variation in the phytochemical profile *Aristolochia indica* samples is influenced by factors such as the age of the plant and the plant part used.

3.7. Variation in aristolochic acid analogue content

Several aristolochic acid analogues were revealed by the LC-DAD-MS analyses and these were either identified by comparison with standards or given tentative assignments from their accurate mass, fragmentation ions and UV spectra (Table 3 and Fig. 4). Aristolochic acid I had the highest average peak area across all samples, followed by aristolochic acid II and cepharadione A.

Other common aristolochic acid analogues include aristolactam I *N*- β -D-glucopyranoside, aristolochic acid V, aristolactam I, aristolochic acid IIIa and aristolochic acid D.

Based on the sum of their peak areas sample 13 (root) has the highest total amount of aristolochic acid analogues. While this sample contains low amounts of AA I and AA II it contains a large variety of aristolochic acid analogues, which are not present in any other sample. Possible candidates for these compounds include aristolactam AII, aristolactam III, aristolactam IVa and aristolactam AIII. In general, root samples contained a wider variety of different aristolochic acid analogues compared to other plant parts.

Sample 9 (fruit) had the second highest overall aristolochic acid content. However, this is due to its extremely high contents of aristolochic acid I and II. This may indicate that *Aristolochia indica* fruits accumulate high amounts of aristolochic acid analogues.

The content of aristolochic acids analogues also varied greatly between different parts of a single plant. For samples 2 and 3, leaf, stem and root material from the same plant were analysed. Interestingly sample 2 (leaf) did not contain aristolochic acid I, whereas the root and stem of the same plant did. While in sample 3 all parts of the plant contained high amounts of aristolochic acid I, the highest quantity was found in the leaf sample. Leaves, fruits and young stems contain significantly higher amounts of aristolochic acid I and II than roots and woody stems (average sum of peak areas 2.78×10^8 vs. 4.86×10^8 , $p < 0.05$).

3.8. Toxicological risk assessment based on ethnobotanical and phytochemical evidence

The toxicological risk that is posed by the consumption of *Aristolochia indica* as a herbal medicine is dependent on a variety of factors. In relation to drug preparation, which used these factors include the dose, the mode of administration and the processing method of the plant material. Other factors such as the time of plant collection or interactions with other drugs that are taken simultaneously might have minor influences on the toxicological risk. Additionally the phytochemistry of the plant material is an important factor that determines the toxicological risk associated with the intake of *Aristolochia indica*. Besides the amount, the type of aristolochic acids that are present also is important, given that the toxicity of aristolochic acid analogues varies greatly (Balachandran et al., 2005; Li et al., 2010).

In this study, the use report with the highest reported dose was 200 g of *Aristolochia indica* leaves soaked in 1 l of water, taken once a day for 3 days, resulting in a total estimated dose of 600 g of *Aristolochia indica* leaves. However, the fact that aristolochic acids are very apolar compounds has to be considered. Kite et al. (2002) showed that the relative amount of AA I in a water extract is less than 6% compared to a 70% methanol extract. Therefore the amount of aristolochic acid analogues present in a water extract is comparatively low, and as a result the toxicological risk of this formulation is reduced. On the other hand the use of *Aristolochia indica* powder was reported in estimated total doses as high as 90 g of powder. In these cases the toxicity of the plant is not reduced due to its processing method. In addition, the age of the plant material influences the toxicological risk. Aristolochic acid (I and II) contents in fruit, leaves and young stems are higher and young plants can therefore be associated with higher toxicological risk. It is noteworthy that some of the doses reported in this study are comparable to the cumulative doses, which were reported for patients of the Belgian cohort who developed urothelial carcinoma after taking Chinese slimming pills (around 200 g of *Aristolochia fangchi* Wu ex L.D. Chow & S.M. Hwang) (Nortier et al., 2000). A cumulative dose of 200 g of *A. fangchi* contains approximately 130 mg aristolochic acid. Furthermore this study showed that replacements of *Aristolochia indica* with other medicinal plants

such as *Rauvolfia serpentina* (L.) Benth. ex Kurz are common. Therefore it is likely that the problem exists vice versa. I.e. *Aristolochia indica* plant material is used as a replacement for other herbal medicines.

Taking this into consideration it is extremely likely that aristolochic acid nephropathy cases have occurred in Bangladesh and that AAN is an overlooked public health problem.

4. Conclusions

AAN and aristolochic acid associated UUC has been identified as an important health risk in some countries, but the wide distribution of the genus globally requires a systematic assessment of regions where AAN or UUC may be of concern. Here we demonstrate that *Aristolochia indica* is widely available on herbal markets and through healers' networks in Bangladesh, a country from which so far no cases of AAN have been reported. Our results indicate that knowledge among *kavirajes* about the health risks associated with its use is extremely limited.

Using a novel approach of directly combining an ethnobotanical study with a metabolomic analysis we were able to provide an assessment of potential risks associated with the use of *Aristolochia indica* in Bangladesh. Based on the data obtained using this ethnobotanical–phytochemical approach it is likely that aristolochic acid nephropathy cases occur in Bangladesh creating an important public health problem. Consequently future research needs to focus on an epidemiological assessment of AAN and UUC in populations potentially at risk in Bangladesh.

This work also highlights that awareness needs to be raised about the health risks associated with the use of *Aristolochia indica* and that there is a need for intervention by public health authorities. Since *Aristolochia* species are commonly used in many parts of the world including India, Africa and Central America, it is likely that so far their effects on public health in these regions have been overlooked. Therefore, this case study has wider implications and should be expanded to other countries.

There is a need to carefully study supply and value chains in herbal medicines and the impact this has on the products composition, quality and safety (Booker et al., 2012). Overall, this study demonstrates the value of using an ethnopharmacological approach combining ethnobotanical fieldwork with a metabolomic analysis in addressing one of the key concerns in the area of medicinal plant research – the exposure of endogenous toxins found in a few taxa commonly used local and traditional medical systems.

Acknowledgements

We are grateful for the support of Dr. Mohammad Zashim Uddin (Department of Botany, Dhaka University, Dhaka, Bangladesh), Dr. Shaikh Bokhtear Uddin (Department of Botany, Chittagong University, Chittagong, Bangladesh), Prof. Mohammed Rahamatullah (Department of Pharmacy, University of Development Alternative, Dhaka, Bangladesh) and Dr. Proma Khondkar (Department of Pharmacy, Rajshahi University, Rajshahi, Bangladesh) during the field work in Bangladesh. We also thank Zubaida Kathun and Amdadur Rahman for translating the interviews. We thank Mark Nesbitt (Economic Botany Collection, Royal Botanic Gardens, Kew Gardens, Richmond, UK) for providing *Aristolochia indica* samples. We are also grateful to all *kavirajes* who kindly agreed to participate in the ethnobotanical study.

J.M. is funded through a Bloomsbury Studentship fostering collaborative links between the participating colleges. Fieldwork was in part funded through a travel grant provided by the London International Development Centre (LIDC).

References

- Ahmed, Z.U., Tahmida Begum, Z.N., Abul Hassan, M., Khondeker, M., Kabir, S.M.H., 2007. Encyclopedia of Flora and Fauna of Bangladesh. Asiatic Society of Bangladesh, Dhaka.
- Balachandran, P., Wei, F., Lin, R.C., Khan, I.A., Pasco, D.S., 2005. Structure activity relationships of aristolochic acid analogues: toxicity in cultured renal epithelial cells. *Kidney International* 67, 1797–1805.
- Booker, A., Johnston, D., Heinrich, M., 2012. Value chains of herbal medicines – research needs and key challenges in the context of ethnopharmacology. *Journal of Ethnopharmacology* 140, 624–633.
- Chen, C.H., Dickman, K.G., Moriya, M., Zavadil, J., Sidorenko, V.S., Edwards, K.L., Gnatenko, D.V., Wu, L., Turesky, R.J., Wu, X.R., Pu, Y.S., Grollman, A.P., 2012. Aristolochic acid-associated urothelial cancer in Taiwan. *Proceedings of the National Academy of Sciences of the United States of America* 109, 8241–8246.
- De Broe, M.E., 2012. Chinese herbs nephropathy and Balkan endemic nephropathy: toward a single entity, aristolochic acid nephropathy. *Kidney International* 81, 513–515.
- Debelle, F.D., Vanherweghem, J.L., Nortier, J.L., 2008. Aristolochic acid nephropathy: a worldwide problem. *Kidney International* 74, 158–169.
- Ghani, A., Pasha, M.K., 2004. *Alternative Medicine*. Banglapedia. Asiatic Society of Bangladesh, Dhaka.
- Gold, L.S., Slone, T.H., 2003. Aristolochic acid, an herbal carcinogen, sold on the Web after FDA alert. *New England Journal of Medicine* 349, 1576–1577.
- Grollman, A.P., Shibutani, S., Moriya, M., Miller, F., Wu, L., Moll, U., Suzuki, N., Fernandes, A., Rosenquist, T., Medverec, Z., Jakovina, K., Brdar, B., Slade, N., Turesky, R.J., Goodenough, A.K., Rieger, R., Vukelic, M., Jelakovic, B., 2007. Aristolochic acid and the etiology of endemic (Balkan) nephropathy. *Proceedings of the National Academy of Sciences of the United States of America* 104, 12129–12134.
- Grollman, A.P., Aristolochic acid nephropathy: Harbinger of a global iatrogenic disease. *Environ Mol Mutagen* 54, 1–7.
- Grollman, A.P., Scarborough, J., Jelakovic, B., James, C.F., 2009. Chapter 7 Aristolochic Acid Nephropathy: An Environmental and Iatrogenic Disease. *Advances in Molecular Toxicology*. Elsevier, pp. 211–227.
- Heinrich, M., Chan, J., Wanke, S., Neinhuis, C., Simmonds, M.S.J., 2009. Local uses of *Aristolochia* species and content of nephrotoxic aristolochic acid 1 and 2—a global assessment based on bibliographic sources. *Journal of Ethnopharmacology* 125, 108–144.
- Keshavan, M.S., 2011. The tale of *Rauwolfia serpentina* and the contributions of Asian Psychiatry. *Asian Journal of Psychiatry* 4, 214–215.
- Jelakovic, B., Karanovic, S., Vukovic-Lela, I., Miller, F., Edwards, K.L., Nikolic, J., Tomic, K., Slade, N., Brdar, B., Turesky, R.J., Stipanovic, Z., Dittrich, D., Grollman, A.P., Dickman, K.G., 2012. Aristolactam-DNA adducts are a biomarker of environmental exposure to aristolochic acid. *Kidney International* 81, 559–567.
- Jha, V., 2009. Current status of end-stage renal disease care in South Asia. *Ethnicity and Disease* 19, 27–32.
- Kite, G.C., Yule, M.A., Leon, C., Simmonds, M.S.J., 2002. Detecting aristolochic acids in herbal remedies by liquid chromatography/serial mass spectrometry. *Rapid Communications in Mass Spectrometry* 16, 585–590.
- Kumar, V., Poonam, Prasad, A.K., Parmar, V.S., 2003. Naturally occurring aristolactams, aristolochic acids and dioxaporphines and their biological activities. *Natural Product Reports* 20, 565–583.
- Li, J., Zhang, L., Jiang, Z., Shu, B., Li, F., Bao, Q., 2010. Toxicities of aristolochic acid I and aristolactam I in cultured renal epithelial cells. *Toxicology In Vitro* 24, 1092–1097.
- Michl, J., Modarai, M., Edwards, S., Heinrich, M., 2011. Metabolomic analysis of *Ranunculus* spp. as potential agents involved in the etiology of equine grass sickness. *Journal of Agricultural and Food Chemistry* 59, 10388–10393.
- Mollik, A.H., Hossan, S., Paul, A.K., Taufiq-Ur-Rahman, M., Jahan, R., Rahmatullah, M., 2010. A comparative analysis of medicinal plants used by folk medicinal healers in three districts of Bangladesh and inquiry as to mode of selection of medicinal plants. *Ethnobotany – Research and Applications* 8, 195–218.
- National Toxicology Program, 2011. Aristolochic acids. Report on Carcinogens 12, 45–49.
- National Toxicology Program, 2008. Report on Carcinogens. Background document for aristolochic acids.
- Nortier, J.L., Martinez, M.C., Schmeiser, H.H., Arlt, V.M., Bieler, C.A., Petein, M., Depierreux, M.F., De Pauw, L., Abramowicz, D., Vereerstraeten, P., Vanherweghem, J.L., 2000. Urothelial carcinoma associated with the use of a Chinese herb (*Aristolochia fangchi*). *New England Journal of Medicine* 342, 1686–1692.
- Rahman, A., Islam, S., Naim, N., Chowdhury, M.H., Jahan, J., Rahmatullah, M., 2010. Use of medicinal plants by folk medicinal practitioners among a heterogeneous population of santals and non-santals in two villages of Rangpur District, Bangladesh. *American–Eurasian Journal of Sustainable Agriculture* 4, 204–210.
- Rahman S.R., 2005. Poor People's Access to Health Services in Bangladesh: Focusing on the Issues of Inequality: Working Paper. Workshop on Health Care for the Poor in South Asia. Network of Asia-Pacific Schools and Institutes of Public Administration and Governance (NAPSIPAG) Annual Conference 2005: Beijing.
- Rashid, U.H., 2004. Health delivery system for renal disease care in Bangladesh. *Saudi Journal of Kidney Diseases and Transplantation* 15, 185–189.
- Schaneberg, B.T., Khan, I.A., 2004. Analysis of products suspected of containing *Aristolochia* or *Asarum* species. *Journal of Ethnopharmacology* 94, 245–249.
- Vanherweghem, J.L., 1997. *Aristolochia* sp and chronic interstitial nephropathies in Indians. *Lancet* 349 1399–1399.
- Vanherweghem, L.J., 1998. Misuse of herbal remedies: the case of an outbreak of terminal renal failure in Belgium (Chinese herbs nephropathy). *Journal of Alternative and Complementary Medicine* 4, 9–13.
- Wachsmuth, O., Matusch, R., 2002. Anhydronium bases from *Rauwolfia serpentina*. *Phytochemistry* 6, 705–709.