



University of
Zurich^{UZH}

Zurich Open Repository and
Archive

University of Zurich
Main Library
Strickhofstrasse 39
CH-8057 Zurich
www.zora.uzh.ch

Year: 2012

A molecular signature in blood identifies early Parkinson's disease

Molochnikov, Leonid; Rabey, Jose M; Dobronevsky, Evgenya; Bonucelli, Ubaldo; Ceravolo, Roberto; Frosini, Daniela; Grünblatt, Edna; Riederer, Peter; Jacob, Christian; Aharon-Peretz, Judith; Bashenko, Yulia; Youdim, Moussa B H; Mandel, Silvia A

Abstract: **BACKGROUND:** The search for biomarkers in Parkinson's disease (PD) is crucial to identify the disease early and monitor the effectiveness of neuroprotective therapies. We aim to assess whether a gene signature could be detected in blood from early/mild PD patients that could support the diagnosis of early PD, focusing on genes found particularly altered in the substantia nigra of sporadic PD. **RESULTS:** The transcriptional expression of seven selected genes was examined in blood samples from 62 early stage PD patients and 64 healthy age-matched controls. Stepwise multivariate logistic regression analysis identified five genes as optimal predictors of PD: p19 S-phase kinase-associated protein 1A (odds ratio [OR] 0.73; 95% confidence interval [CI] 0.60-0.90), huntingtin interacting protein-2 (OR 1.32; CI 1.08-1.61), aldehyde dehydrogenase family 1 subfamily A1 (OR 0.86; 95% CI 0.75-0.99), 19 S proteasomal protein PSMC4 (OR 0.73; 95% CI 0.60-0.89) and heat shock 70-kDa protein 8 (OR 1.39; 95% CI 1.14-1.70). At a 0.5 cut-off the gene panel yielded a sensitivity and specificity in detecting PD of 90.3 and 89.1 respectively and the area under the receiving operating curve (ROC AUC) was 0.96. The performance of the five-gene classifier on the de novo PD individuals alone composing the early PD cohort (n = 38), resulted in a similar ROC with an AUC of 0.95, indicating the stability of the model and also, that patient medication had no significant effect on the predictive probability (PP) of the classifier for PD risk. The predictive ability of the model was validated in an independent cohort of 30 patients at advanced stage of PD, classifying correctly all cases as PD (100% sensitivity). Notably, the nominal average value of the PP for PD (0.95 (SD = 0.09)) in this cohort was higher than that of the early PD group (0.83 (SD = 0.22)), suggesting a potential for the model to assess disease severity. Lastly, the gene panel fully discriminated between PD and Alzheimer's disease (n = 29). **CONCLUSIONS:** The findings provide evidence on the ability of a five-gene panel to diagnose early/mild PD, with a possible diagnostic value for detection of asymptomatic PD before overt expression of the disorder.

DOI: 10.1186/1750-1326-7-26

Posted at the Zurich Open Repository and Archive, University of Zurich

ZORA URL: <http://doi.org/10.5167/uzh-74493>

Published Version



Originally published at:

Molochnikov, Leonid; Rabey, Jose M; Dobronevsky, Evgenya; Bonucelli, Ubaldo; Ceravolo, Roberto; Frosini, Daniela; Grünblatt, Edna; Riederer, Peter; Jacob, Christian; Aharon-Peretz, Judith; Bashenko,

Yulia; Youdim, Moussa B H; Mandel, Silvia A (2012). A molecular signature in blood identifies early Parkinson's disease. *Molecular Neurodegeneration*, 7:26. DOI: 10.1186/1750-1326-7-26

RESEARCH ARTICLE

Open Access

A molecular signature in blood identifies early Parkinson's disease

Leonid Molochnikov^{1†}, Jose M Rabey^{1†}, Evgenya Dobronevsky², Ubaldo Bonucelli³, Roberto Ceravolo³, Daniela Frosini³, Edna Grünblatt^{4,5}, Peter Riederer⁵, Christian Jacob⁵, Judith Aharon-Peretz⁶, Yulia Bashenko⁷, Moussa BH Youdim^{7,8} and Silvia A Mandel^{7*}

Abstract

Background: The search for biomarkers in Parkinson's disease (PD) is crucial to identify the disease early and monitor the effectiveness of neuroprotective therapies. We aim to assess whether a gene signature could be detected in blood from early/mild PD patients that could support the diagnosis of early PD, focusing on genes found particularly altered in the substantia nigra of sporadic PD.

Results: The transcriptional expression of seven selected genes was examined in blood samples from 62 early stage PD patients and 64 healthy age-matched controls. Stepwise multivariate logistic regression analysis identified five genes as optimal predictors of PD: p19 S-phase kinase-associated protein 1A (odds ratio [OR] 0.73; 95% confidence interval [CI] 0.60–0.90), huntingtin interacting protein-2 (OR 1.32; CI 1.08–1.61), aldehyde dehydrogenase family 1 subfamily A1 (OR 0.86; 95% CI 0.75–0.99), 19 S proteasomal protein PSMC4 (OR 0.73; 95% CI 0.60–0.89) and heat shock 70-kDa protein 8 (OR 1.39; 95% CI 1.14–1.70). At a 0.5 cut-off the gene panel yielded a sensitivity and specificity in detecting PD of 90.3 and 89.1 respectively and the area under the receiving operating curve (ROC AUC) was 0.96.

The performance of the five-gene classifier on the *de novo* PD individuals alone composing the early PD cohort (n = 38), resulted in a similar ROC with an AUC of 0.95, indicating the stability of the model and also, that patient medication had no significant effect on the predictive probability (PP) of the classifier for PD risk. The predictive ability of the model was validated in an independent cohort of 30 patients at advanced stage of PD, classifying correctly all cases as PD (100% sensitivity). Notably, the nominal average value of the PP for PD (0.95 (SD = 0.09)) in this cohort was higher than that of the early PD group (0.83 (SD = 0.22)), suggesting a potential for the model to assess disease severity. Lastly, the gene panel fully discriminated between PD and Alzheimer's disease (n = 29).

Conclusions: The findings provide evidence on the ability of a five-gene panel to diagnose early/mild PD, with a possible diagnostic value for detection of asymptomatic PD before overt expression of the disorder.

Keywords: Alzheimer's disease, Sporadic Parkinson's disease, Blood Biomarker, CSF Biomarkers, E3 ubiquitin ligase, SCF, SKP1, Heat shock protein Hsc-70, Early diagnosis

* Correspondence: mandel@tx.technion.ac.il

†Equal contributors

⁷Technion-Faculty of Medicine, Eve Topf Center for Neurodegenerative Diseases Research, Department of Molecular Pharmacology, P.O.B. 9697, 31096, Haifa, Israel

Full list of author information is available at the end of the article

Background

Currently, the diagnosis of Parkinson's disease (PD) is based mainly on clinical criteria [1]. In addition the evaluation of the clinical status and evolution of PD are based on examination of symptoms, utilizing structured scoring systems (Unified Parkinson's Disease Rating Scale, (UPDRS) [2], Short Parkinson Evaluation Scale, (SPES), Scales for Outcomes in Parkinson's diseases- (SCOPA) [3,4] and the Hoehn and Yahr (H&Y) staging scale [5]. Although PD can be accurately diagnosed in patients with a typical presentation and positive response to levodopa with a sensitivity of 93% [6], differential diagnosis from other entities presenting parkinsonism (e.g. essential tremor, progressive supranuclear palsy (PSP), multisystem atrophy (MSA), corticobasal degeneration (CBD)) may be challenging. Imaging studies using positron emission tomography (PET) with [¹⁸F]-Dopa, single photon emission tomography (SPECT) with [¹²³I]-β-CIT or diffusion-weighted MRI could improve differential diagnosis of parkinsonism [7-9], but cost-effectiveness remains a problem.

Furthermore, these tools do not provide a specific and sensitive enough PD diagnosis [10]. The discovery of mutations linked to familial PD and the implementation of microarray-based gene expression profiling during the past decade, has provided additional clues for the pathophysiology of sporadic PD as well as potential molecular targets that may be of relevance to the disease [11-16]. Our previous gene expression study conducted in post-mortem substantia nigra (SN) obtained from sporadic PD patients identified a cluster of genes that were most differentially expressed in sporadic parkinsonian SN, by a factor of ≥ 1.5 , compared to non-diseases controls [11]. The transcripts were mainly related to DA transmission and metabolism, and protein handling/degradation mechanisms previously known to be involved in the pathophysiology of the disease. Examples include *SKP1A* (p19, S phase kinase-associated protein 1A), a component of the largest class of E3 ubiquitin ligases, SCF (*Skp1*, *Cullin 1*, a substrate recognizing F-box protein and *Rbx1*) [17,18], *HSPA8* (heat shock 70-kDa protein 8, encoding chaperone Hsc-70) [19], and 19 S proteasomal protein *PSMC4/S6b/TBP7*, whose levels were decreased in PD. Also, aldehyde dehydrogenase family 1, subfamily A1 (*ALDH1A1*) involved in the degradation of aldehyde derivatives of DA, and vesicular monoamine member 2 (*VMAT2*) were down-regulated.

Recent studies have shown the feasibility of studying peripheral (cerebrospinal fluid (CSF), blood and urine) signatures or biomarkers for potential diagnosis and early detection of PD [20] such as alpha-synuclein and DJ-1 protein in the CSF [21-23]. Serum uric acid appears to be the first molecular factor linked to a decreased risk of PD [24,25] and to inversely correlate with clinical and radiographic progression of typical PD [26]. Furthermore, increasing evidence indicates that peripheral tissue shares

significant protein/gene expression similarities to inaccessible central nervous system (CNS) tissues [27,28] and thus may offer valuable surrogate markers for neuropsychiatric disorders. For instance, a recent large serum proteomic study with psychiatric patients has identified a number of proteins belonging to pathways previously shown to be involved in the pathophysiology of either depression or schizophrenia, such as growth factors, cytokines and neurotrophins [29]. In a microarray gene profiling study with blood PD tissue, it was demonstrated a panel of genes associated with PD risk, some of them involved in pathobiologically relevant disease processes of the ubiquitin-proteasome pathway system (UPS), mitochondrial function, and apoptosis [27]. More recently, a genome-wide pathway meta-analysis (meta-GSEA) with PD tissues has particularly identified a set of genes controlling cellular bioenergetics and mitochondria biogenesis that were shared by both brain and blood [30]. Using a similar, but less comprehensive approach of integrating openly available and new PD microarray data, a panel of genes was identified to be commonly expressed in brain and blood samples [31]. These findings suggest that blood and brain neuronal cells might have a common regulatory mechanism for gene expression.

The seven genes chosen for the study form part of the core of 20 gene transcripts most significantly altered in PDSN from sporadic PD patients [11]. Here we analyze their expression in peripheral blood from early PD patients to identify a signature that could support the diagnosis of the disease.

Results

Identification of a PD risk gene signature

A five-gene panel was found that optimally discriminates early PD from controls based on stepwise multivariate logistic regression analysis of seven genes that were found significantly altered in sporadic PD SN tissue [11] (*ALDH1A1*, *PSMC4*, *SKP1A*, *HSPA8*, *c-src* Tyrosine Kinase [*CSK*], huntingtin interacting protein 2/ubiquitin-conjugating enzyme E2K [*HIP2*] and Egl nine homolog 1 [*EGLN1*]). The composition of the PD cohort comprised mild/early stage PD (38 *de novo* and 24 medicated PD, H&Y = 1.40 (SD = 0.56)). As shown in Table 1 *SKP1A*, *HIP2*, *ALDH1A1*, *PSMC4* and *HSPA8*, were classified as optimal predictors for PD risk. Negative regression coefficients (B) indicate an inverse relationship between transcript expression and risk for PD. Thus, the negative values of *ALDH1A1*, *PSMC4* and *SKP1A* suggest that these genes possibly decrease the risk for the occurrence of PD with OR values of 0.86, 0.73 and 0.73 respectively, whereas *HSPA8* and *HIP2* significantly increase the risk for PD, with OR values of 1.39 and 1.32, respectively. The predicted probability (PP) for PD in a tested individual was calculated by the equation described in the

Table 1 Variables in the predicted probability equation

	B	P value	OR	95%C.I. for OR	
				Lower	Upper
L_ SKP1	-0.313	0.003	0.731	0.595	0.898
L_ HIP2	0.274	0.008	1.315	1.076	1.608
L_ ALDH1A1	-0.148	0.030	0.862	0.754	0.986
L_ PSMC4	-0.318	0.002	0.727	0.595	0.889
L_ HSPA8	0.330	0.001	1.391	1.139	1.699

L_ Natural logarithm.
 B_ Regression coefficient. Negative values indicate an inverse relationship between transcript expression and risk for PD and the opposite for positive values.
 OR_ odds ratio.
 C.I._ Confidence Interval.
 Given that L_ and not raw ratios were used in logistic regression analysis, L_ values were multiplied by 10 to avoid skewed OR values.

Materials and Methods and the diagnostic performance of the gene cluster was assessed by a receiver operating characteristic curve (ROC), showing high sensitivity and specificity for the early stage PD group versus healthy controls at various cut-offs (Figure 1, blue line), with an area under the curve (AUC) of 0.96. The performance of the classifier on the 38 *de novo*, non medicated PD individuals alone from the early PD cohort, resulted in a similar ROC with an AUC of 0.95, indicating the stability

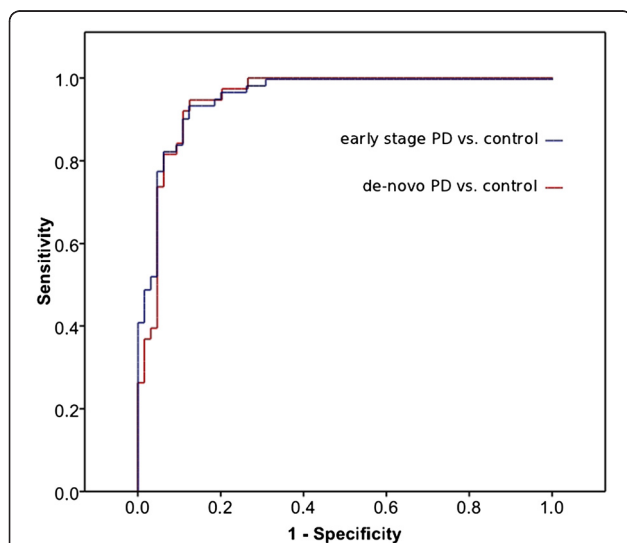


Figure 1 The receiver operating characteristic curve (ROC) of the logistic regression model for discriminating between early PD and control. The blue line depicts integrative sensitivity and specificity for the PP derived from five variables (SKP1A, HIP2, ALDH1A1, PSMC4 and HSPA8 transcriptional expression levels, AUC = 0.96) of the early/mild PD vs healthy control subject cohorts. At a cut-off point of 0.5 it was possible to distinguish between PD individuals and healthy controls with sensitivity and specificity values of 90.3% and 89.1% respectively. The red line shows the performance of the classifier on the 38 *de novo*, non medicated PD individuals alone from the early PD cohort, which resulted in a similar ROC with an AUC of 0.95, indicating the stability of the logistic model.

of the classifier model (Figure 1, red line) and suggesting that medication does not influence the predictive value of the genetic signature. In support, no significant difference was observed between the PP average value of the non-medicated, *de-novo* PD cohort (0.81 (SD = 0.20)) and that of the early medicated population (0.87 (SD = 0.25); *t*-test, *p* = 0.354).

The distribution of the PP values of the early/mild PD cohort vs those of healthy (control) subjects is depicted in Figure 2A. To better represent the true predictive value of the model, we selected a cut-off of 0.5 beyond which the subjects were considered as having PD. At this cut-off point we were able to distinguish between PD individuals and healthy controls with sensitivity and specificity values of 90.3% and 89.1% respectively.

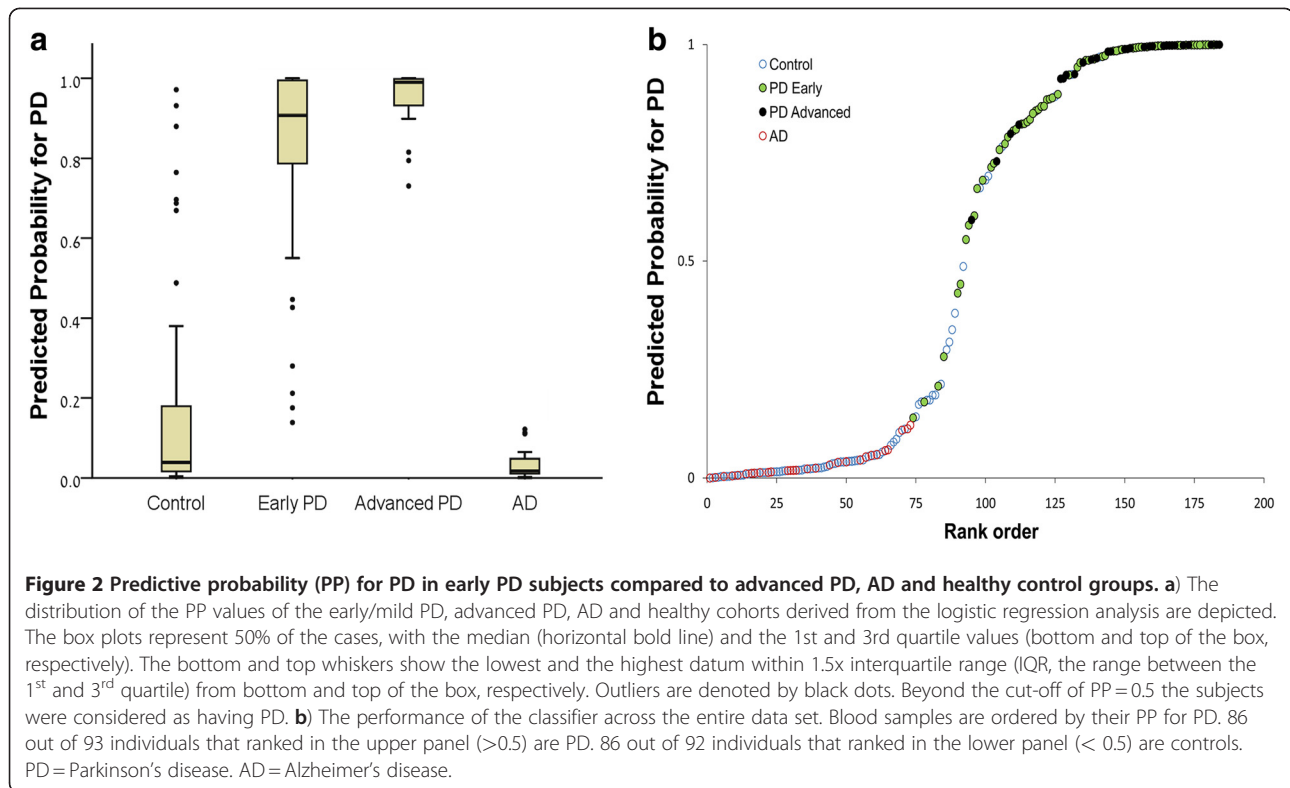
Demographic analysis revealed no significant difference in age between the early PD group and control group (*t* test, *p* = 0.382; see Table 2 for patients details). When age was introduced as a possible explanatory variable within the regression model which included the gene expression variables, it had no impact on the PP of the model for PD. Regarding gender, although the proportion of males was significantly higher in the early PD group, a two-way ANOVA, with gender (male/female) and group (control/PD) as variables, revealed that the differential gene expression resulted from the group variable only (*p* < 0.001), being independent of gender (*p* = 0.522) or gender/group interaction (*p* = 0.346).

Validation of specificity and sensitivity of the gene risk panel

To validate the diagnostic value of the PD gene panel, a separate cohort of 30 PD patients at advanced disease stage and 29 patients with Alzheimer's disease (AD) were tested with the logistic classification model obtained from the early PD-healthy control samples. The gene cluster positively classified all 30 cases as PD (100% sensitivity) and discriminated PD from AD with 100% specificity (all 29 cases were classified as non-PD), thus supporting the diagnostic value of the molecular signature for detecting PD (Figure 2A). Notably, the nominal average value of the PP for PD in late-stage cohort (0.95 (SD = 0.09); H&Y: 3.07 (SD = 0.81)) was higher than that of the early PD group (0.83 (SD = 0.22); H&Y: 1.40 (SD = 0.56)), suggesting a potential for the model to assess disease severity. The performance of the classifier across the entire data set is depicted in Figure 2B. 86 out of 93 individuals that ranked above a PP of 0.5 are PD. 86 out of 92 individuals that ranked below a PP of 0.5 are controls.

Relative transcript expression in the different cohorts

Figure 3 shows the differential transcription pattern of the individual five genes composing the panel, in the four cohorts of subjects: healthy control, early stage PD,



advanced stage and AD. Prominent transcript level reductions in *ALDH1A1*, *PSMC4* and *SKP1A* and a significant elevation in *HSPA8* were seen in the PD groups, compared to healthy controls, as revealed by one-way ANOVA. On the other hand, no significant gene alterations were encountered in *HIP2* in early PD compared to control, whereas a clear increase was seen in advanced PD stage. A different expression pattern was seen in the AD group, supporting the specificity of the gene changes to PD.

The correlative analysis of the expression levels of all the tested transcripts in the control cohort, revealed a significant association between *SKP1A*, *HIP2*, *ALDH1A1* and *PSMC4* (Table 3). *SKP1A* showed a weaker but significant correlation with two additional transcripts, *HSPA8* and *EGLN1*. In contrast to the findings in the control group, the association of *SKP1A* with the other transcripts was disrupted in early PD, suggesting a possible functional connection between the panel genes.

Discussion

The results of this study support our hypothesis that there are blood gene biomarkers that can distinguish early PD patients from normal control subjects. Notably, 38 out of the 62 Parkinson cases in the mild/early cohort were *de novo* and so, not treated with any antiparkinsonism drug when the blood samples were obtained while the rest were collected during the first year of medication. This suggests that the genetic signature could be an early diagnostic marker for PD. In support, the classifier model performed equally well in early stage *de novo* PD samples, producing a similar ROC AUC value to that obtained with the entire early PD cohort (de novo and medicated), indicating that patient medication had no significant effect on the PP of the classifier for PD risk and that the model is stable throughout the two PD groups. Supporting this concept, it was recently shown in a population of asymptomatic *LRRK2* mutation carriers, that reduced CSF amyloid β and

Table 2 Demographics and Hoehn & Yahr scores

Diagnostic groups	Control	PD (total cases)	PD Early Stage	PD Advanced Stage	AD
n	64	92	62	30	29
Age (SD)	65.9 (7.9)	65.52 (10.11)	64.5 (10.2)	67.67 (9.7)	73.0 (8.4)
Minimum Age	52	35	35	52	58
Maximum Age	82	88	88	88	87
Gender (% of males)	43.8	67.4	66.1	70.0	44.8
Hoehn & Yahr (SD)	0	1.95 (1.02)	1.40 (0.56)	3.07 (0.8)	0

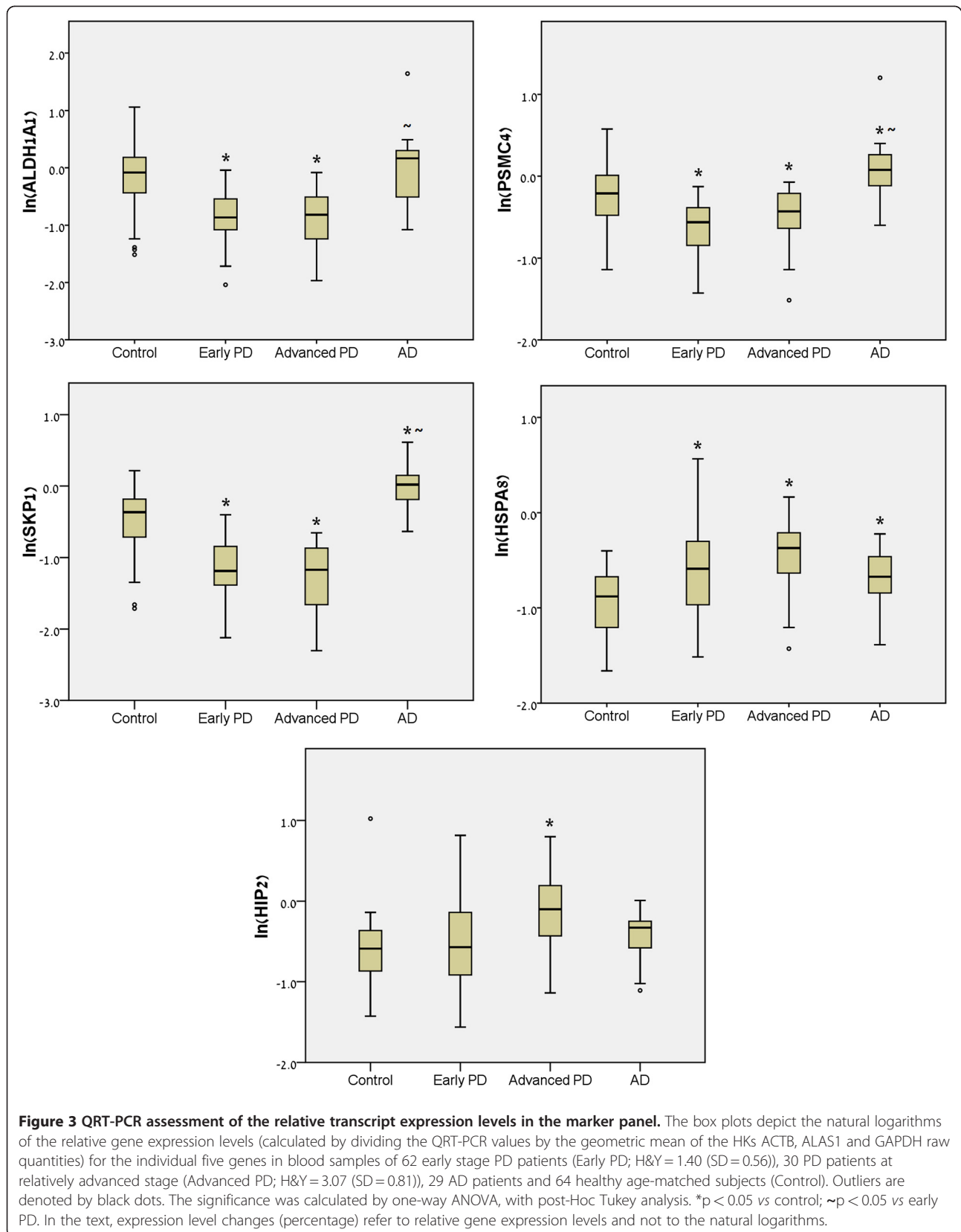


Table 3 Correlations between the natural logarithms of the relative gene expression levels in the control group

	HIP2	ALDH1A1	PSMC4	HSPA8	CSK	EGLN1
SKP1A	R=0.440** p<0.001	R=0.600** p<0.001	R=0.480** p<0.001	R=0.288* p=0.021	R=-0.217 p=0.196	R=0.283* p=0.023
HIP2	-	R=0.459** p<0.001	R=0.582** p<0.001	R=0.296* p=0.017	R=-0.265 p=0.112	R=0.371* p=0.03
ALDH1A1		-	R=0.385** p=0.002	R=0.235 p=0.061	R=-0.060 p=0.724	R=0.299* p=0.016
PSMC4			-	R=0.402** p=0.001	R=0.052 p=0.761	R=0.286* p=0.022
HSPA8				-	R=0.237 p=0.158	R=0.185 p=0.144
CSK					-	R=0.112 p=0.508

R = Pearson correlations coefficient.

* P < 0.05; ** P < 0.01.

tau species correlated with lower striatal dopaminergic function as determined by PET [32], suggesting that they may serve as potential biomarkers even in asymptomatic phases of the disease. The performance of the gene model was validated in an independent cohort of patients at advanced PD stage where all individuals were correctly classified as PD, while it fully discriminated PD from a group of individuals affected with AD (considered the most common neurodegenerative disease). Giving that misdiagnosis occurs normally at the initial PD stage, the 100% sensitivity obtained with the long-term PD cohort support the feasibility of the biomarker panel to differentiate with certainty between PD and non-PD. Further studies will determine the ability of the panel to differentially diagnose idiopathic PD from patients with other forms of Parkinsonism, such as PSP and MSA.

One main challenge in the development of biological markers is to minimize the number of genes in the classification model while still achieving a high classification rate. The present biomarker signature identified a minimal set of transcripts in blood that has a high discriminating power to categorize the PD early group and to positively/negatively classify the advanced PD and AD cohorts.

A model with fewer genes is likely to yield better generalization (less number of free variables) and optimization of diagnosis. We have found that five out of the seven gene transcripts previously reported to have been changed in sporadic PDSN [11], were found altered in blood of mild/early PD. Our findings argue in support of the view that changes in peripheral blood may have relevance to mechanisms occurring in brain of PD patients and indicate that at least some of the gene expression alterations occurring in PD are not exclusive to the brain, but are expressed also in peripheral blood tissue. Indeed, a large proportion of the genes encoded in the human genome have detectable levels of transcripts in

circulating blood cells [33]; When coming into contact with brain tissue, circulating blood cells may provide information concerning the pathological environment of the PD brain.

Gene expression correlation analysis indicates a significant association in blood from healthy control individuals between *SKP1A* and five gene transcripts: *HIP2*, *ALDH1A1*, *PSMC4*, *HSPA8* and *EGLN1*, while it was absent in early PD, suggesting a functional coordinative role for Skp1. Skp1 takes part in the ubiquitin-proteasome/E3-ligase SCF complex, acting in a module-like manner: Skp1 can interact with several F-box proteins, which play an indispensable role in the selection of target proteins for degradation [17]. Thus, a reduced activity of Skp1 may play a role in the development of PD by impairing the timely degradation of a wide array of proteins, promote their deposition and affect the function of dopaminergic (DAergic) neurons. Skp1, together with the chaperone Hsc-70 encoded by *HSPA8*, the proteasomal ATPase subunit *PSMC4*, the *EGLN1*-encoded prolyl hydroxylase and the huntingtin-interacting protein Hip2, are intimately connected to processing/degradation of proteins by UPS/lysosomal-mediated degradation [17-19,34-37]. Further evidence for a possible functional connection between the panel genes is provided by our recent finding showing that silencing *SKP1A* in the SN-derived murine cell line SN4741 induced a parallel down-regulation in the transcripts of *ALDH1A1* and *HSPA8* [38]. Aldh1 was found to be expressed highly and specifically in DA cells of the SN and ventral tegmental area (VTA) [39] having a role in the neutralization of toxic aldehyde derivatives of DA [34]. These highly reactive, neurotoxic aldehydes can accumulate in case of decreased levels of Aldh1, as occurs in SNpc of PD [39,40], and can promote neuronal death. The fact that the five genes comprising the signature, as a group, play important roles in PD neuropathology and are

significantly correlated in blood form healthy subjects, add a biological significance to the findings.

Supporting the rationale of identifying molecular changes in peripheral blood that may respond to the pathology in the brain of sporadic PD, Grunblatt et al. [41] recently reported a cluster of four genes in blood tissue that discriminated between PD and healthy controls. One of them, *ALDH1A1* was also detected in our gene signature, independently confirming part of our results. Further support comes from Scherzer et al. [27] who demonstrated a panel of eight genes involved in relevant PD processes such as the UPS, mitochondrial function and apoptosis in whole blood tissue from a heterogeneous cohort of relatively early-staged PD individuals, that correlated with PD risk. It is worth noting that despite the difference in the study design, e.g., the use of large-scale microarrays comprising the whole genome, the restricted eight-gene signature included *HIP2*, also found by us, as a surrogate for PD. In our study, we have performed multi-step logistic regression analysis, which is commonly applied in biomarker research. This procedure recruits in each step the most significant gene discriminating between PD and control in relation to the prior step, thus taking into consideration the cumulative impact of the gene group on the PD risk. In Scherzer's study, the genes were individually rank-ordered according to the absolute value of their correlation coefficient with PD, disregarding the correlation between their expression levels.

Another major discovery of this investigation is that the PP values of the five-gene signature were accentuated in patients at late PD stage, suggesting a potential for the model to assess disease severity. One relevant point is what could be the biological meaning of this observation. It can be conjectured that the peripheral gene transcriptional changes may reflect evolution of pathogenic processes during PD progression. In analogy, Shi et al. [42] have described a panel of seven CSF proteins that could aid in PD diagnosis and differential diagnosis. Among these, an increase in CSF fractalkine, along with decreased A β 1–42 levels, correlated with a higher UPDRS score in cross-sectional samples and in a set of longitudinally collected PD samples from the DATATOP study.

When examining the relative quantity of each gene individually at the cross-sectional level, we demonstrated a similar transcriptional pattern for *SKPIA*, *ALDH1A*, *PSMC4* and *HSPA8* in the two PD cohorts compared to normal controls or AD groups, suggesting that these transcripts are altered at early stages of the disease and not affected by disease progression. However, at this stage, we cannot determine whether the selective elevation of *HIP2* demonstrated only in PD patients at advanced stage of disease, can reflect a disease evolution. Despite the strength of the present findings, there are some issues yet to be addressed. At this point the cross-sectional nature of this

study does not allow making a correlation between gene expression and clinical symptoms that may point to the clinical state. Longitudinal studies will establish whether the gene panel can serve as a marker for PD risk or its progression. Although we have initially focused on seven out of the 20 gene transcripts most altered in sporadic PD brains, it is likely that the other risk genes could be also relevant.

Conclusions

Our current pilot study demonstrated that the blood gene model has strong predictive value for PD diagnosis and possibly may help to identify individuals at presymptomatic stages (patients with depression, sleep disturbances or hyposmia or patients carrying genetic risk factors) who are good candidates for neuroprotective treatment. Such a biomarker will be of value for identification of a pathophysiological subgroup of PD patients that may respond favorably to agents targeting the mechanisms reflected by the gene panel.

Large-scale, prospective, controlled studies, which combine our methodology with quantification of CSF total/oligomers of α -synuclein or/and DJ-1 and brain imaging may be useful as a multi-modal biomarker, not only for early diagnosis but for evaluation of disease progression.

Methods

Study population

The subjects examined gave written informed consent according to the ethical committee of each hospital engaged in the study. 185 individuals were enrolled for blood sample mRNA extraction: 62 early/mild PD patients (38 *de novo*, non medicated PD and 24 early PD patients within first year of medication (Hoehn and Yahr; H&Y 1.40, SD = 0.56), 30 PD patients with advanced disease (H&Y 3.07, SD = 0.8), 29 patients with AD (Mini-Mental State Exam = 19.0, SD = 2.73) and 64 healthy age-matched controls without personal or family history of neurodegenerative diseases. For this multi-center, international study blood samples were recruited from the following hospitals: the Department of Neuroscience, University of Pisa (Italy), Hospital of Viareggio (Italy), University Hospital of Würzburg (Germany), Assaf Harofe and Rambam Medical Centers (Tel Aviv and Haifa, Israel). PD patients that met modified United Kingdom Parkinson's Disease Society Bank Brain clinical diagnostic criteria [1] were diagnosed by neurologists trained in movement disorders. Patient data (age, gender, PD severity score, H&Y, blood count and medication) were registered. Patients with probable AD were recruited by the Clinic for Psychiatry, Psychosomatic and Psychotherapy, University of Würzburg, Assaf Harofe and Rambam Medical Centers. The AD samples from University of Würzburg (n = 10) are part of a study published earlier [41]. All patients met the National Institute of Neurological and Communicative Disorders and Stroke-Alzheimer's Disease and Related

Disorders Association diagnostic criteria [43]. Control blood samples consisted of healthy age- matched subjects that accompanied neurological patients during the visits to the movement disorders centers. The proportion of males in the healthy population was 43.8% with a mean age of 65.9 ± 7.9 and in the PD group (early and advanced) was 67.4% and a mean age of 64.5 ± 10.2 (see Table 2). Total white blood cells count, as well as differential blood cell counts were examined for any bias in gene expression changes. No significant variations were observed via one-way analysis of variance (ANOVA) between PD and healthy control groups in all counts as shown in Additional file 1, Table S1).

Isolation of total RNA from blood samples and quality control

Venous blood samples were collected using *PAXgene Blood RNA System Tubes* (Becton Dickinson GmbH, Heidelberg, Germany) at the different centers and shipped to the Eve Topf Center in Haifa for RNA extraction and real-time PCR (QRT-PCR) quantification, except for the 10 AD sample cases from University of Würzburg, which were shipped as lyophilized RNA instead of blood tubes. The blood samples were frozen at -80°C until processed for total RNA isolation. Both controls and cases samples were processed in parallel. Total RNA was extracted from whole blood with the *PAXgene™ Blood RNA Kit 50* (PreAnalytiX, Qiagen and BD, Germany). RNA quality was determined spectrophotometrically by NanoDrop 1000 Spectrophotometer (Thermo Fisher Scientific Inc, Wilmington, DE, USA) and by using the Experion™ Automated Electrophoresis System (Bio-Rad Laboratories, Hercules, CA, USA). A representative test from arbitrarily selected RNA samples showing the analysis of the 28 S and 18 S bands is provided in

Additional file 2. RNA samples that adhered to quality control criteria (Additional file 1, Methods) were taken for further analysis.

Quantitative real-time RT-PCR (QRT-PCR)

Total RNA from each blood sample was reversed transcribed employing the *High-Capacity cDNA Reverse Transcription Kit* (Applied Biosystems, Foster City, CA, USA). QRT-PCR was performed using SYBR Green detection chemistry, in the ABI PRISM 7000 Real-Time Sequence Detection System (Applied Biosystems, Foster City, CA, USA, see details in Additional file 1, Methods). Oligonucleotide primers are depicted in Table 4. Gene expression values were normalized to three housekeeping genes (Additional file 1, Methods and Table S2).

Building a risk marker profile

In order to establish a molecular risk marker for PD, a logistic regression model was built via stepwise multivariate logistic regression analysis of the natural logarithms (ln) of the relative gene expression for all seven genes, comparing the PD early/mild subjects (38 *de novo*, non medicated PD and 24 early PD patients) and the healthy control subjects (64 healthy age-matched controls without personal or family history of neurodegenerative diseases).

- Step 1. The relative gene expression was calculated by dividing the QRT-PCR values of the seven genes by the geometric mean of the three most stable housekeeping genes expression levels (GAPDH, ACTB and ALAS1).
- Step 2. The values were transformed to ln to enable normal distribution.
- Step 3. The model was built by progressively adding the variables (relative gene expression) with the

Table 4 QRT-PCR oligonucleotide primers

Gene Name	Acc number	Symbol	Catalog No.
Egl nine homolog 1	NM_022051	EGLN1	QT01021454
Heat shock 70 kDa protein 8	NM_006597, NM_153201	HSPA8	QT00030079
Proteasome (prosome, macropain) 26 S subunit, ATPase 4	NM_006503	PSMC4	QT00035511
Clathrin, light polypeptide	NM_001834	CLTB	QT00081872
Aldehyde Dehydrogenase 1 Family, member A	NM_000689	ALDH1A1	QT00013286
S-phase kinase-associated protein 1A	NM_006930	SKP1	QT00040320
Huntingtin interacting protein 2/ubiquitin-conjugating enzyme E2K	NM_005339, NM_001111113	HIP2=UBE2K	QT00010276
c-src Tyrosine Kinase	NM_004383, NM_001127190	CSK	QT00999131
<i>Housekeeping genes</i>			
Actin B	NM_001101	ACTB	QT00095431
Aminolevulinate, delta-, synthase 1	NM_000688, NM_199166	ALAS1	QT00073122
Glyceraldehyde-3-phosphate dehydrogenase	NM_002046	GAPDH	QT01192646
Peptidylprolyl isomerase A (cyclophilin A)	NM_021130	PPIA	QT01866137
Ribosomal protein L13A	NM_012423	RPL13A	QT00089915

lowest, most significant, individual p value, one at a time, at each step in the process until no more predictors significant at $p \leq 0.05$ remained.

- Step 4. From this model we calculated the PP for PD in a tested individual, using the regression coefficient values B obtained from the logistic regression model via the following equation: $eN / (1 + eN)$, wherein $N = -0.45 + \sum_i = 1-n (B_i * \ln(\text{Gene_exp}_i))$, wherein each i in said formula indicates a different gene i; B_i is the regression coefficient value of said gene i; and Gene_exp_i is the relative expression level of said gene i in said individual.
- Step 5. The PP values were used to construct a ROC curve (and AUC) depicting the relationship between sensitivity and specificity for the early/mild PD group versus healthy controls.
- Step 6. A correlation analysis between the individual variables (gene expression levels) was performed to ascertain that these do not highly correlate, as this would add no further resolution to the model. Notably, all the correlations were similar with a maximal R value of 0.592.

Statistical analysis

To determine if the predicted risk for PD was independent of age, the main risk factor for PD, it was introduced as a possible explanatory variable within the regression model alongside with the gene expression variables. Since the proportion of males was significantly higher in the early PD group (Mann–Whitney non-parametric test, $p = 0.012$), two-way ANOVA (followed by Tukey post-hoc analysis), with gender (male/female) and group (control/PD) as independent variables was performed.

To assess whether dopamine replacement therapy may influence the prediction for PD risk by the model *t*-test analysis was applied to compare between the PP values of non-medicated, de-novo PD cohort and those of the early medicated population.

Comparison between the experimental groups was carried out using one-way ANOVA followed by Tukey post-hoc analysis. Correlations were evaluated via Pearson Correlation with two tailed test of significance. All statistical analyses were performed using SPSS Statistics 17.0 software (SPSS Inc., Chicago, Illinois, USA).

Additional files

Additional file 1: Table S1. Hematologic values of PD cases and controls. **Table S2.** Stability ranking of the candidate reference genes, Methods [44,45].

Additional file 2: Run Overview Report, Virtual Gel Report, Egram, Gel Lane And Result Table Report.

Competing interests

MBY received royalties from TEVA pharmaceutical for the development of rasagiline. EG institution received grant funds from Verein Zur Durchführung Neurowissenschaftlicher Tagungen and from Hirnliga.

Acknowledgements

We thank Dr Ronney J. Barkey and Dr Tamar Amit for critically reading the manuscript and Tal Galili and Ilana Gelernter from The Statistics Consulting Laboratory of Tel Aviv University for their valuable assistance with statistical analyses. The Technion-Research & Development support is acknowledged.

Author details

¹Sackler School of Medicine, Tel Aviv University, Tel Aviv, Israel. ²Asaf HaRofeh Medical Center, Department of Neurology, Zerifin, Israel. ³Department of Neuroscience, University of Pisa, Pisa, Italy. ⁴Neurobiochemistry Laboratory, Department of Child and Adolescent Psychiatry, University Zurich- Irchel, Zurich, Switzerland. ⁵Department of Psychiatry, Psychosomatic and Psychotherapy, University Hospital of Würzburg, Würzburg, Germany. ⁶Department of Neurology, Rambam Medical Center, Haifa, Israel. ⁷Technion-Faculty of Medicine, Eve Topf Center for Neurodegenerative Diseases Research, Department of Molecular Pharmacology, P.O.B. 9697, 31096 Haifa, Israel. ⁸Department of Biology, Yonsei Central University, Seoul, Republic of Korea.

Authors' contributions

LM, JMR, MBH and SAM designed the study and prepared the statistical analysis plan. SAM wrote the manuscript with assistance from LM, JMR and MBY. LM, JMR, MBY and SAM contributed to data analyses. YB assisted with technical methods. JMR, ED, UB, RC, DF, EG, PR, CJ and JA identified patients or controls and were responsible for collecting data from them. The authors wish it to be known that, in their opinion, the first 2 authors should be regarded as joint first authors. All authors read and approved the final manuscript.

Received: 23 February 2012 Accepted: 31 May 2012

Published: 31 May 2012

References

1. Hughes AJ, Daniel SE, Kilford L, Lees AJ: Accuracy of clinical diagnosis of idiopathic Parkinson's disease: a clinico-pathological study of 100 cases. *J Neurol Neurosurg Psychiatry* 1992, **55**:181–184.
2. Fahn S, Elton R, UPDRS Development Committee: **Unified Parkinson's disease rating scale.** In *Recent Developments in Parkinson's Disease. Volume 2.* Edited by Fahn S, Marsden CD, Goldstein M. New York: Macmillan; 1987:153–167.
3. Rabey JM, Bass H, Bonuccelli U, Brooks D, Klotz P, Korczyn AD, Kraus P, Martinez-Martin P, Morrish P, Van Sauten W, Van Hilten B: Evaluation of the Short Parkinson's Evaluation Scale: a new friendly scale for the evaluation of Parkinson's disease in clinical drug trials. *Clin Neuropharmacol* 1997, **20**:322–337.
4. Marinus J, Visser M, Stiggelbout AM, Rabey JM, Martinez-Martin P, Bonuccelli U, Kraus PH, van Hilten JJ: A short scale for the assessment of motor impairments and disabilities in Parkinson's disease: the SPES/SCOPA. *J Neurol Neurosurg Psychiatry* 2004, **75**:388–395.
5. Hoehn MM, Yahr MD: Parkinsonism: onset, progression and mortality. *Neurology* 1967, **17**:427–442.
6. Hughes AJ, Ben-Shlomo Y, Daniel SE, Lees AJ: What features improve the accuracy of clinical diagnosis in Parkinson's disease: a clinicopathologic study. *Neurology* 1992, **42**:1142–1146.
7. Yekhlief F, Ballan G, Macia F, Delmer O, Sourgen C, Tison F: Routine MRI for the differential diagnosis of Parkinson's disease, MSA, PSP, and CBD. *J Neural Transm* 2003, **110**:151–169.
8. Davie CA, Wenning GK, Barker GJ, Tofts PS, Kendall BE, Quinn N, McDonald WI, Marsden CD, Miller DH: Differentiation of multiple system atrophy from idiopathic Parkinson's disease using proton magnetic resonance spectroscopy. *Ann Neurol* 1995, **37**:204–210.
9. Barbiroli B, Martinelli P, Patuelli A, Lodi R, Iotti S, Cortelli P, Montagna P: Phosphorus magnetic resonance spectroscopy in multiple system atrophy and Parkinson's disease. *Mov Disord* 1999, **14**:430–435.

10. Jankovic J, Rajput AH, McDermott MP, Perl DP: **The evolution of diagnosis in early Parkinson disease.** Parkinson Study Group. *Arch Neurol* 2000, **57**:369–372.
11. Grunblatt E, Mandel S, Jacob-Hirsch J, Zeligson S, Amariglio N, Rechavi G, Li J, Ravid R, Roggendorf W, Riederer P, Youdim MB: **Gene expression profiling of parkinsonian substantia nigra pars compacta; alterations in ubiquitin-proteasome, heat shock protein, iron and oxidative stress regulated proteins, cell adhesion/cellular matrix and vesicle trafficking genes.** *J Neural Transm* 2004, **111**:1543–1573.
12. Hauser MA, Li YJ, Xu H, Nouredine MA, Shao YS, Gullans SR, Scherzer CR, Jensen RV, McLaurin AC, Gibson JR, et al: **Expression profiling of substantia nigra in Parkinson disease, progressive supranuclear palsy, and frontotemporal dementia with parkinsonism.** *Arch Neurol* 2005, **62**:917–921.
13. Miller RM, Kiser GL, Kayser-Kranich TM, Lockner RJ, Palaniappan C, Federoff HJ: **Robust dysregulation of gene expression in substantia nigra and striatum in Parkinson's disease.** *Neurobiol Dis* 2006, **21**:305–313.
14. Moran LB, Duke DC, Deprez M, Dexter DT, Pearce RK, Graeber MB: **Whole genome expression profiling of the medial and lateral substantia nigra in Parkinson's disease.** *Neurogenetics* 2006, **7**:1–11.
15. Zhang Y, James M, Middleton FA, Davis RL: **Transcriptional analysis of multiple brain regions in Parkinson's disease supports the involvement of specific protein processing, energy metabolism, and signaling pathways, and suggests novel disease mechanisms.** *Am J Med Genet B Neuropsychiatr Genet* 2005, **137**:5–16.
16. Gasser T: **Mendelian forms of Parkinson's disease.** *Biochim Biophys Acta* 2009, **1792**:587–596.
17. Zheng N, Schulman BA, Song L, Miller JJ, Jeffrey PD, Wang P, Chu C, Koepf DM, Elledge SJ, Pagano M, et al: **Structure of the Cul1-Rbx1-Skp1-F boxSkp2 SCF ubiquitin ligase complex.** *Nature* 2002, **416**:703–709.
18. Feldman RM, Correll CC, Kaplan KB, Deshaies RJ: **A complex of Cdc4p, Skp1p, and Cdc53p/cullin catalyzes ubiquitination of the phosphorylated CDK inhibitor Sic1p.** *Cell* 1997, **91**:221–230.
19. Murata S, Chiba T, Tanaka K: **CHIP: a quality-control E3 ligase collaborating with molecular chaperones.** *Int J Biochem Cell Biol* 2003, **35**:572–578.
20. Eller M, Williams DR: **Biological fluid biomarkers in neurodegenerative parkinsonism.** *Nat Rev Neurol* 2009, **5**:561–570.
21. Hong Z, Shi M, Chung KA, Quinn JF, Peskind ER, Galasko D, Jankovic J, Zabetian CP, Leverenz JB, Baird G, et al: **DJ-1 and alpha-synuclein in human cerebrospinal fluid as biomarkers of Parkinson's disease.** *Brain* 2010, **133**:713–726.
22. Mollenhauer B, Locascio JJ, Schulz-Schaeffer W, Sixel-Doring F, Trenkwalder C, Schlossmacher MG: **alpha-Synuclein and tau concentrations in cerebrospinal fluid of patients presenting with parkinsonism: a cohort study.** *Lancet Neurol* 2011, **10**:230–240.
23. Tokuda T, Qureshi MM, Ardah MT, Varghese S, Shehab SA, Kasai T, Ishigami N, Tamaoka A, Nakagawa M, El-Agnaf OM: **Detection of elevated levels of [alpha]-synuclein oligomers in CSF from patients with Parkinson disease.** *Neurology* 2010, **75**:1766–1770.
24. Weisskopf MG, O'Reilly E, Chen H, Schwarzschild MA, Ascherio A: **Plasma urate and risk of Parkinson's disease.** *Am J Epidemiol* 2007, **166**:561–567.
25. Davis JW, Grandinetti A, Waslien CI, Ross GW, White LR, Morens DM: **Observations on serum uric acid levels and the risk of idiopathic Parkinson's disease.** *Am J Epidemiol* 1996, **144**:480–484.
26. Schwarzschild MA, Schwid SR, Marek K, Watts A, Lang AE, Oakes D, Shoulson I, Ascherio A, Hyson C, Gorbold E, et al: **Serum urate as a predictor of clinical and radiographic progression in Parkinson disease.** *Arch Neurol* 2008, **65**:716–723.
27. Scherzer CR, Eklund AC, Morse LJ, Liao Z, Locascio JJ, Fefer D, Schwarzschild MA, Schlossmacher MG, Hauser MA, Vance JM, et al: **Molecular markers of early Parkinson's disease based on gene expression in blood.** *Proc Natl Acad Sci U S A* 2007, **104**:955–960.
28. Sullivan PF, Fan C, Perou CM: **Evaluating the comparability of gene expression in blood and brain.** *Am J Med Genet B Neuropsychiatr Genet* 2006, **141B**:261–268.
29. Domenici E, Wille DR, Tozzi F, Prokopenko I, Miller S, McKeown A, Brittain C, Rujescu D, Giegling I, Turck CW, et al: **Plasma protein biomarkers for depression and schizophrenia by multi analyte profiling of case-control collections.** *PLoS One* 2010, **5**:e9166.
30. Zheng B, Liao Z, Locascio JJ, Lesniak KA, Roderick SS, Watt ML, Eklund AC, Zhang-James Y, Kim PD, Hauser MA, et al: **PGC-1alpha, a potential therapeutic target for early intervention in Parkinson's disease.** *Sci Transl Med* 2010, **2**:52ra73.
31. Shehadeh LA, Yu K, Wang L, Guevara A, Singer C, Vance J, Papapetropoulos S: **SRRM2, a potential blood biomarker revealing high alternative splicing in Parkinson's disease.** *PLoS One* 2010, **5**:e9104.
32. Aasly JO, Shi M, Sossi V, Stewart T, Johansen KK, Wszolek ZK, Uitti RJ, Hasegawa K, Yokoyama T, Zabetian CP, et al: **Cerebrospinal fluid amyloid beta and tau in LRRK2 mutation carriers.** *Neurology* 2012, **78**:55–61.
33. Liew CC, Ma J, Tang HC, Zheng R, Dempsey AA: **The peripheral blood transcriptome dynamically reflects system wide biology: a potential diagnostic tool.** *J Lab Clin Med* 2006, **147**:126–132.
34. Mardh G, Vallee BL: **Human class I alcohol dehydrogenases catalyze the interconversion of alcohols and aldehydes in the metabolism of dopamine.** *Biochemistry* 1986, **25**:7279–7282.
35. Hjelle JJ, Petersen DR: **Hepatic aldehyde dehydrogenases and lipid peroxidation.** *Pharmacol Biochem Behav* 1983, **18**(Suppl 1):155–160.
36. de Pril R, Fischer DF, Roos RA, van Leeuwen FW: **Ubiquitin-conjugating enzyme E2-25 K increases aggregate formation and cell death in polyglutamine diseases.** *Mol Cell Neurosci* 2007, **34**:10–19.
37. Epstein AC, Gleadle JM, McNeill LA, Hewitson KS, O'Rourke J, Mole DR, Mukherji M, Metzzen E, Wilson MI, Dhanda A, et al: **C. elegans EGL-9 and mammalian homologs define a family of dioxygenases that regulate HIF by prolyl hydroxylation.** *Cell* 2001, **107**:43–54.
38. Fishman-Jacob T, Reznichenko L, Youdim MB, Mandel SA: **A sporadic parkinson's disease model via silencing of the ubiquitin-proteasome/E3-ligase component, SKP1A.** *J Biol Chem* 2009, **284**(47):32835–32845.
39. Galter D, Buerenich S, Carmine A, Anvret M, Olson L: **ALDH1 mRNA: presence in human dopamine neurons and decreases in substantia nigra in Parkinson's disease and in the ventral tegmental area in schizophrenia.** *Neurobiol Dis* 2003, **14**:637–647.
40. Mandel SA, Fishman T, Youdim MB: **Gene and protein signatures in sporadic Parkinson's disease and a novel genetic model of PD.** *Parkinsonism Relat Disord* 2007, **13**(Suppl 3):S242–S247.
41. Grunblatt E, Zehetmayer S, Jacob CP, Muller T, Jost WH, Riederer P: **Pilot study: peripheral biomarkers for diagnosing sporadic Parkinson's disease.** *J Neural Transm* 2010, **117**(12):1387–1393.
42. Shi M, Bradner J, Hancock AM, Chung KA, Quinn JF, Peskind ER, Galasko D, Jankovic J, Zabetian CP, Kim HM, et al: **Cerebrospinal fluid biomarkers for Parkinson disease diagnosis and progression.** *Ann Neurol* 2010, **69**:570–580.
43. McKhann G, Drachman D, Folstein M, Katzman R, Price D, Stadlan EM: **Clinical diagnosis of Alzheimer's disease: report of the NINCDS-ADRDA Work Group under the auspices of Department of Health and Human Services Task Force on Alzheimer's Disease.** *Neurology* 1984, **34**:939–944.
44. Spinsanti G, Zannolli R, Panti C, et al: **Quantitative Real-Time PCR detection of TRPV1-4 gene expression in human leukocytes from healthy and hyposensitive subjects.** *Mol Pain* 2008, **4**:51.
45. Vandesompele J, De Preter K, Pattyn F, et al: **Accurate normalization of real-time quantitative RT-PCR data by geometric averaging of multiple internal control genes.** *Genome Biol* 2002, **3**(7):RESEARCH0034.

doi:10.1186/1750-1326-7-26

Cite this article as: Molochnikov et al.: A molecular signature in blood identifies early Parkinson's disease. *Molecular Neurodegeneration* 2012 **7**:26.

Submit your next manuscript to BioMed Central and take full advantage of:

- Convenient online submission
- Thorough peer review
- No space constraints or color figure charges
- Immediate publication on acceptance
- Inclusion in PubMed, CAS, Scopus and Google Scholar
- Research which is freely available for redistribution

Submit your manuscript at
www.biomedcentral.com/submit

