

Singapore Management University Institutional Knowledge at Singapore Management University

Research Collection School Of Economics

School of Economics

8-2016

Free entry and social inefficiency in vertical relationships: The case of the Japanese MRI industry

Ken ONISHI

Singapore Management University, KENONISHI@smu.edu.sg

Naoki WAKAMORI

Chiyo HASHIMOTO

Shun-ichiro BESSHO

Follow this and additional works at: https://ink.library.smu.edu.sg/soe_research

 Part of the [Industrial Organization Commons](#)

Citation

ONISHI, Ken; WAKAMORI, Naoki; HASHIMOTO, Chiyo; and BESSHO, Shun-ichiro. Free entry and social inefficiency in vertical relationships: The case of the Japanese MRI industry. (2016). 1-39. Research Collection School Of Economics.

Available at: https://ink.library.smu.edu.sg/soe_research/2068

This Working Paper is brought to you for free and open access by the School of Economics at Institutional Knowledge at Singapore Management University. It has been accepted for inclusion in Research Collection School Of Economics by an authorized administrator of Institutional Knowledge at Singapore Management University. For more information, please email libIR@smu.edu.sg.

CIRJE-F-1001

The Welfare Consequences of Free Entry in Vertical Relationships: The Case of the MRI Market

Ken Onishi

Singapore Management University

Naoki Wakamori

The University of Tokyo

Chiyo Hashimoto

Stanford University

Shun-ichiro Bessho

Keio University

February 2016; Revised in August 2016

CIRJE Discussion Papers can be downloaded without charge from:

<http://www.cirje.e.u-tokyo.ac.jp/research/03research02dp.html>

Discussion Papers are a series of manuscripts in their draft form. They are not intended for circulation or distribution except as indicated by the author. For that reason Discussion Papers may not be reproduced or distributed without the written consent of the author.

The Welfare Consequences of Free Entry in Vertical Relationships: The Case of the MRI Market*

Ken Onishi[†]
Chiyo Hashimoto[§]

Naoki Wakamori[‡]
Shun-ichiro Bessho[¶]

This Draft: August 9, 2016

Abstract

This paper quantifies the welfare consequences of the medical arms race in the context of MRI adoption. We build and estimate a model of the vertical structure of the industry where MRI manufacturers sell high- and low-quality MRIs in the upstream market, whereas medical institutions provide medical services to patients in the downstream market. Simulation results suggest that the current free-entry policy in Japan leads to excess MRI adoption. Furthermore, regulating medical institutions' MRI adoption, taxing MRI purchases, or softening competition among MRI manufacturers would increase social welfare substantially by mitigating the business-stealing effect in the downstream market.

JEL Classification: L51, I11, I18.

Keywords: Vertical relationship, Free entry, MRI industry, Healthcare market.

*We are grateful to David Besanko, Isis Durrmeyer, Igal Hendel, Mitsuru Igami, Robin Lee, Satoshi Myojo, Volker Nocke, Ariel Pakes, Martin Peitz, Robert Porter, Philipp Schmidt-Dengler, Jonathan S. Skinner, Yuya Takahashi, and Yasutora Watanabe. We also wish to thank the participants at many conferences and seminars. Wakamori gratefully acknowledges financial support from the German Science Foundation (SFB-TR 15) and the Seimeikai Foundation. Any remaining errors are our own.

[†]Singapore Management University: 90 Stamford Road, Singapore 178903, Singapore.

[‡]University of Tokyo: Hongo 7-3-1, Bunkyo-ku, Tokyo 113-0033, Japan.

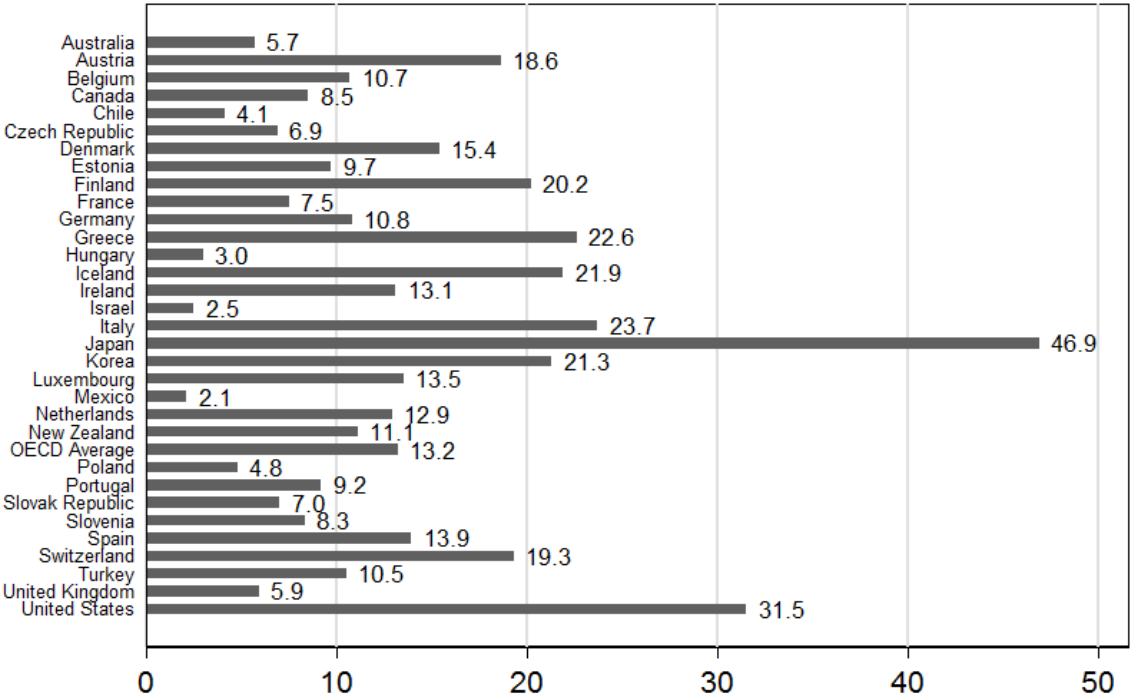
[§]Center for Health Policy/Center for Primary Care and Outcomes Research, Stanford University: Encina Hall, 616 Serra St, Stanford, CA 94305, USA.

[¶]Keio University: 2-15-45 Mita, Minato-ku, Tokyo 108-8345, Japan.

1 Introduction

The medical arms race, the proliferation of expensive medical technology and devices, has caused significant concern about increasing healthcare expenditures in many countries. To attract patients, medical institutions adopt new technology as long as the benefit exceeds the cost of adoption. From a social welfare point of view, however, such competition among medical institutions may result in unnecessary duplication of costly medical devices. This paper examines this potential inefficiency arising from the medical arms race in the context of adoption of magnetic resonance imaging scanners (hereinafter MRIs), as MRIs are among the most expensive medical devices and MRI adoption is frequently cited as an example of the medical arms races (e.g., Baker, 2010; Sari, 2007; Schmidt-Dengler, 2006).

Figure 1: The number of MRIs per million residents across OECD countries



Source: OECD Health Statistics 2013.
 Belgium, Germany and Switzerland only include MRIs in hospitals.
 The data is not available for Norway and Sweden.

An international comparison of the number of MRIs per million residents across OECD countries in Figure 1 gives us insight into the relationship between the medical arms race and healthcare regulation. As shown in the figure, the top two countries are Japan and the U.S. Both have far more MRIs per million people than the OECD average which is

13.2, whereas European countries, such as France and Germany, have fewer MRIs per capita than the OECD average. One of the most important distinctions between these two types of countries is the existence of regulation on the adoption of expensive medical devices to mitigate medical arms races. Medical institutions in Japan and the U.S. can decide whether to adopt an MRI based on their own assessments, whereas many European countries regulate MRI adoption. These observations immediately raise questions about whether the medical arms races in Japan and the U.S. create unnecessary duplication of costly medical devices, and whether regulations in European countries achieve socially efficient allocation of MRIs.

Regulations that are not optimally designed may result in underprovision of MRIs. On the other hand, in the absence of regulation, medical institutions may adopt more than the socially optimal number of MRIs, as theoretically shown in [Mankiw and Whinston \(1986\)](#). They consider a free-entry model with fixed cost of entry and show that there is a tendency toward excessive entry due to the business-stealing effect. Their model is potentially applicable to the MRI industry in countries without regulation, because, in these countries, medical institutions can provide MRI-associated services upon purchasing an MRI, which can be viewed as free entry with large fixed cost. In fact, [Chandra and Skinner \(2012\)](#) note that overprovision of MRIs might occur without regulation and suggest the use of regulation to mitigate excessive adoption. We therefore empirically examine the welfare consequences of MRI adoption with and without regulation.

The framework developed by [Mankiw and Whinston \(1986\)](#), however, is not sufficient when considering the MRI industry, as it does not model the upstream market, i.e., competition among MRI manufacturers. If the upstream market is a monopoly and there is no competition, the monopolistic MRI manufacturer has an incentive to set high prices for MRIs, which impedes MRI adoption. On the other hand, if the upstream market is perfectly competitive, the MRI prices approach the marginal cost, which facilitates MRI adoption. Thus, the excessiveness or insufficiency of the adoption in the downstream market depends crucially on the mark-ups that the upstream firms charge. The differences between mark-ups in Japan and in the U.S. suggest that competition among MRI manufacturers affects medical institutions' adoption of MRIs. The number of MRI manufacturers in Japan is greater than that in the U.S. and the Japanese Fair Trade Commission documented in 2004 that the price of MRIs in Japan was 25% lower than the price in the U.S.¹ The lower price in Japan may have been a consequence of severe competition in the upstream market, which accelerates

¹There are five MRI manufacturers operating in the U.S., whereas there is one additional domestic firm in addition to those five firms operating in Japan.

the medical arms race. To assess the welfare implications of the medical arms race, therefore, we explicitly model the upstream market where MRI manufacturers sell MRIs to medical institutions.

To proceed to the empirical analysis, we construct a novel dataset that contains a complete list of medical institutions, the characteristics of the MRIs that each medical institution owns, the number of patients treated in each medical institution, the patients' co-payments and the reimbursement amount for medical institutions in Japan. Although our general framework is not restricted to the study of the Japanese market, there are two advantages that make the Japanese market more appealing than the U.S. for this analysis. First, medical prices are regulated by the government in Japan; thus, patient co-payments and medical institution reimbursements can be perfectly observed, which is crucial for welfare analysis. On the other hand, in the U.S., it is hard to obtain the data on co-payment for each patient and the reimbursement price for medical institutions, due to the lack of a unified health insurance system. Second, in our Japanese data, we observe the number of patients, which is a key variable in quantifying the business-stealing effects of MRI adoption, from a random sample of all medical institutions that offer MRI scans. In the U.S., other institutions besides hospitals (such as freestanding imaging centers) provide MRI scanning service, which makes it difficult for researchers to assess the number of patients treated there.

In the empirical analysis, we build and estimate a vertical industry model. In the upstream market, MRI manufacturers compete in quantity and medical institutions strategically decide whether to adopt an MRI or not. In the downstream market, MRI-equipped medical institutions provide MRI scanning services for patients and patients decide whether to visit a medical institution and if so, which one. The number of patients helps us identify the parameters for MRI scanning demand, whereas free-entry conditions for medical institutions and optimality conditions for MRI manufacturers help us identify the parameters for MRI production cost.

The estimated parameters are then used to conduct counterfactual simulations in order to quantify the effect of potential policy interventions. Motivated by Figure 1, we first hypothetically introduce French-style regulation which limits the number of MRIs per million people in each region. We consider three scenarios: one having the same limit as France's regulation (7.5 MRIs per million people) and two levels of looser regulation (10 and 23 MRIs per million people).² In all scenarios, consumer surplus would decrease because fewer medical institutions would adopt MRIs and consumers' hospital choices would be limited. On

²We assume that market share stays the same under this hypothetical regulation.

the other hand, MRI producer surplus would increase because the business-stealing effects are mitigated.³ The change in producer surplus would outweigh the change in consumer surplus, leading to an increase in social welfare. Second, we hypothetically introduce a sales tax on MRIs, as entry taxes and licensing fees are frequently discussed as effective policy interventions in the literature on free entry. Our results indicate that such a sales tax with an appropriate redistribution of tax revenue would be Pareto improving.

We further examine the effect of upstream market competition on social welfare by considering two hypothetical cases. First, all MRI manufacturers proportionally reduce their quantity to maximize the industry profit, keeping their current market shares constant. Second, all manufacturers hypothetically merge, allowing for production reallocation. The first scenario would yield similar results to those generated by French-style regulation. Even though allowing a cartel is anti-competitive, social welfare would increase as MRI producers internalized business-stealing effects in the downstream market. This finding reveals a mechanism that determines how upstream market competition affects social welfare and provides new insight into antitrust policies. In the second scenario, we observe further improvement in social welfare due to production reallocation. By allowing MRI manufacturers to reallocate their production, they are able to further internalize business-stealing effects among products.

This paper is related to the growing literature of health economics, in particular, the literature focusing on new technology adoption and the medical arms race. Existing papers such as Baker (2001) and Baker and Phibbs (2002) suggest the existence of strategic interaction among hospitals and of inefficiency that arises from the medical arms race. Schmidt-Dengler (2006) introduces a structural approach to show that the business-stealing effect is one important source of inefficiencies. However, the existing literature lacks welfare analysis due to the limited availability of patient-level data. To the best of our knowledge, Zabinski (2014) is the first to attempt to quantify social welfare using data from the robotic surgery industry. Our paper expands the literature by examining how regulations affect social welfare; we also quantify the welfare consequences of the medical arms race.

This paper also makes a substantial contribution to the literature on firms' entry and vertical markets. The empirical literature on firms' entry such as Berry and Waldfogel (1999) and Maruyama (2011) builds upon Mankiw and Whinston (1986), and recent papers have enriched the model by incorporating quality choices as in Mazzeo (2002) and dynamic

³In the model, we assume zero-profit conditions for the medical institutions. Therefore, social welfare is defined by the sum of consumer welfare and the MRI producer surplus.

incentive as in [Jia and Pathak \(2015\)](#). We add a new perspective to the literature, namely the vertical structure of markets, the structure that [Ghosh and Morita \(2007\)](#) theoretically study.⁴ Introduction of the vertical structure of markets may reverse welfare implications in the existing literature both theoretically and empirically. Our modeling framework also contributes to the literature of vertical markets. The recent literature has extensively studied how competition affects social welfare in markets with vertical structure. Many existing papers, including [Crawford and Yurukoglu \(2012\)](#), [Ho and Lee \(2015\)](#) and [Villas-Boas \(2007\)](#), have emphasized negotiations among upstream and downstream firms, whereas our paper focuses on how the degree of upstream market competition affects downstream firms’ entry and social welfare.

This paper is organized as follows: Section 2 describes the institutional background and our novel data, and provides some summary statistics and motivating facts for the modeling framework. Section 3 then provides a theoretical model, which provokes our empirical study, and an empirical model, which is customized to study the data we have in hand. We discuss empirical implementation and identification in Section 4. The estimation results and the counterfactual simulation are given in Section 5. Section 6 concludes.

2 Institutional Background and Data

In order to motivate our model, this section first provides a brief overview of the health care system and the MRI industry in Japan. After that, we describe our data.

2.1 Background

Health Care System in Japan Since 1961, Japan has had universal health coverage (like many OECD countries), which implies that every citizen in Japan is insured. Roughly speaking, there are two types of insurance programs available in Japan and they depend on the citizen’s employer. If a citizen’s employer offers its own insurance program, then he/she must enroll in it. This is called “Employee Health Insurance” (*Kenko-Hoken*). Otherwise people enroll in so-called “National Health Insurance” (*Kokumin-Kenka-Hoken*). Regardless of their insurance programs, when the insured (patients) receive medical services at medical institutions, the patients must pay 30% of the health care fee and the rest should be

⁴Our model is similar to that of [Ghosh and Morita \(2007\)](#) in the sense that both incorporate vertical structure into [Mankiw and Whinston \(1986\)](#). [Ghosh and Morita \(2007\)](#) consider free entry in the upstream market with a fixed number of downstream firms, whereas we focus on the effect of upstream market competition given free entry in the downstream market.

covered by their insurers.⁵ The Japanese health care system has several notable features: (i) “free access,” (ii) fee-for-service (FFS) payment, and (iii) a lack of regulation of medical institutions’ adoption of MRIs.

First and most importantly, Japanese patients have “free access”, which means that they are allowed to go to any medical institution in Japan, unlike the U.S. system which only allows patients to go to medical institutions belonging to their health insurers’ network. Thus, except in a few rare cases, patients can choose to go to whichever medical institution they like, in principle. Furthermore, unlike countries such as France, the U.K., and the Netherlands, there is no general practitioner system in Japan and thus it is common for people to go directly to specialized medical institutions when they get sick. This aspect is particularly relevant to the model presented in Section 3, because patients’ choice of medical institution does not depend on home doctors’ advice but rather on their own preference.

Second, health care fees are regulated in Japan and are set by the government with biannual revisions. In a fee-for-service (FFS) payment system, medical treatments are unbundled and patients must pay for each medical treatment.⁶ Medical institutions are formally divided into two main categories in Japan: hospitals and clinics. The distinction depends entirely on the number of beds. If a medical institution has less than 20 beds, it is classified as a clinic. Otherwise, it is called a hospital. About 80% of hospitals and around 95% of clinics are privately owned, which enables us to safely assume that medical institutions maximize their profits in our model. Even though there is such wide variation in medical institutions’ patient capacity, the insured must pay, in principle, the same fees for the same medical treatment in Japan, regardless of their medical institution choices.

Lastly, there are neither regulations nor subsidies affecting medical institutions’ MRI adoption. According to [Ho, Ku-Goto and Jollis \(2009\)](#), the U.S. is in a similar situation where there is no effective regulation on MRI adoption. On the other hand, France and Germany have regional restrictions to discourage excessive adoption of expensive medical equipment (see [König \(1998\)](#) for details of the regulations).

The MRI Industry in Japan MRI (Magnetic Resonance Imaging) is one of the medical imaging techniques that enables the scanning of body tissues. In particular, it is a useful

⁵There are some exceptions. For example, if patients are more than 70 years old, their co-payment is 20%. Furthermore, insurers subsidize some expensive medical treatments.

⁶As of 2015, some hospitals have started using the DPC (Diagnosis Procedure Combination) payment system, because the Japanese government encourages hospitals to shift to DPC in order to reduce medical expenses. However, the time period that our sample comes from is 2008 and at that time most medical institutions used fee-for-service payment.

tool for identifying diseases in the brain, other organs and soft tissues. MRIs use magnetic fields and radio waves and thus, naturally, one of the most important characteristics of an MRI is the field strength of its magnet, which is measured in tesla. Although there are some exceptions, a higher-tesla machine is basically better than one with lower tesla, because a higher-tesla machine allows doctors to take higher-quality images in less time. Although the most popular MRI is a 1.5-tesla machine, the field strength varies by machine, typically ranging from 0.2 to 3 tesla. In the MRI treatment market, the regulated reimbursement price depends on the MRI's tesla. If an MRI's magnetic strength is 1.5 tesla or higher, medical institutions typically receive around 23,400 JPY for each treatment. Otherwise, the reimbursement price is 19,200 JPY.⁷ Thus, the average patient whose co-payment is 30% must pay approximately 7,000 JPY (60 USD) for a high-tesla MRI scanning service and 5,800 JPY (49 USD) for a low-tesla MRI scanning service.⁸

There are six MRI manufacturers operating in Japan; Five of them are globally operated and one of them is domestically operated. The five global MRI producers include GE Healthcare Japan (GE), Hitachi Medical Corp. (Hitachi), Philips Electronics Japan (Philips), Siemens Healthcare Japan (Siemens) and Toshiba Medical Systems (Toshiba). The single domestic producer is Shimadzu Corp (Shimadzu).⁹ Even though MRI machines are among the most expensive pieces of medical equipment, it seems that the Japanese market offers relatively lower prices due to severe price competition induced by the three Japanese manufacturers – Hitachi, Shimadzu and Toshiba. In fact, the [Japan Fair Trade Commission \(2005\)](#) documented that the average MRI price in Japan was about 25% lower than the price in the U.S., and the U.S. price is typically much lower than that in EU countries. This industry structure could be one of the reasons why there are so many MRIs in Japan.

2.2 Data

Data Overview The datasets used in this paper come from various sources. First of all, we obtained a complete list of hospitals in Japan based on a series of books, *Byouin Jyouchou*

⁷The reimbursement prices are imputed in the following way. First, if the MRI field strength is less than 1.5 tesla, the sum of the fee for undergoing an MRI scan and the standard consultation fee is 19,200 JPY. For high-tesla MRI, the fees typically include more components and it is not clear how to calculate the average reimbursement price. Thus, we calibrate these high-tesla fees by matching the average reimbursement prices to those reported in [Imai, Ogawa, Tamura and Imamura \(2012\)](#).

⁸1 USD = 117.4 JPY as of January 19, 2016.

⁹Shimadzu was also globally operated but the firm halted its sales of MRI scanners outside the Japanese market in 1999 and has not resumed them.

Table 1: MRI Ownership by Medical Institution Type

	No MRI	Owning MRI		Total
		Low	High	
Hospitals				
Large (≥ 100 beds)	494	813	1,366	2,673
Small (< 100 beds)	5,001	906	286	6,193
Sub Total	5,495	1,719	1,652	8,866
Clinics (Only neurology, neurosurgery and orthopedics)				
	12,958	1,115	252	14,325
Total	18,453	2,834	1,904	23,191

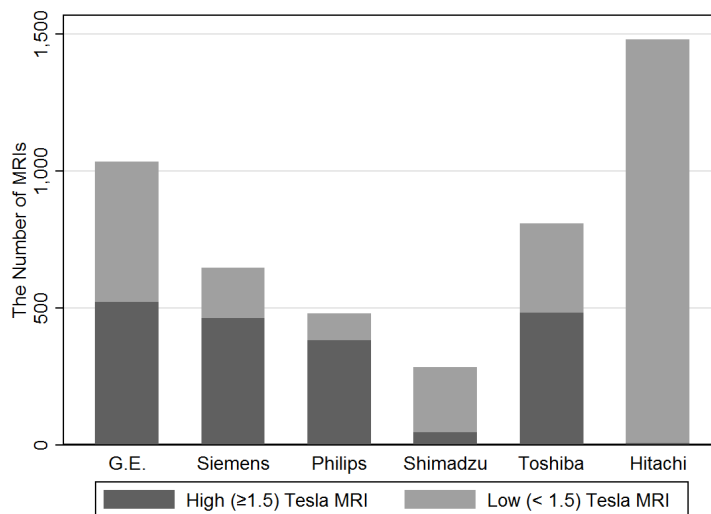
Note: This table represents the number of medical institutions without and with low- and high-tesla MRIs by the category of medical institutions. The category ‘‘Clinics’’ only includes the clinics that focus on neurology, neurosurgery, and orthopedics, as these clinics are the main users of MRIs.

(Hospital Information), with help of Freeill Corp, and a complete list of clinics that focus on neurosurgery, neurology and orthopedics in Japan. Second, we manually collected a complete list of medical institutions that own at least one MRI based on a series of monthly-published books, *Gekkan Shin Iryo* (New Medical Care). Third, we also used a survey of medical institutions, asking which model of MRI they own, the timing of their purchases, reasons for purchasing, utilization of their MRIs, and so on. Roughly 20% of the medical institutions that own MRIs responded and [Hashimoto and Bessho \(2011\)](#) show that the samples represent the population well. Therefore, in this paper, we assume that samples are drawn randomly. Finally, the municipality-level average income and population data are obtained from the 2010 census, as the Japanese government conducts a census every five years and the 2010 census is closest in time to the year our MRI data was collected.

Descriptive Statistics Table 1 shows, by institution type, the number of Japanese medical institutions that own low- and high-tesla MRIs or no MRIs. This paper only deals with the medical institutions that potentially adopt MRIs. Therefore, we use all hospitals in Japan and all clinics that focus on neurosurgery, neurology and orthopedics. As demonstrated in the first row, there are 2,673 large hospitals in Japan. Among them, 1,366 hospitals, more than half of them, own at least one high-quality MRI and 813 hospitals have a low-quality MRI. This pattern is completely reversed for small hospitals and clinics. Most of them do not own high-quality MRIs, though a non-negligible portion of them still have low-quality MRIs.

Next, Figure 2 depicts the market share. Though there are some differences in selling low-quality MRIs, *four* global MRI manufacturers produce very similar numbers of high-quality MRIs. In contrast, Hitachi, one of the global MRI manufacturers, has the largest share among six MRI producers and almost 99% of Hitachi’s share comes from the sales of low-quality MRIs, when decomposing Hitachi’s market share into the low-quality and high-quality segments. A similar pattern is observed in the market share composition for Shimadzu. Notice that the global market share looks slightly different from this graph. In many OECD countries, GE, Philips and Siemens each account for 25% of the market share, respectively, whereas Toshiba typically accounts for 10 to 15% and Hitachi accounts for 5%. Thus, Japan’s unique market share structure could be due to the severe competition in Japan, in particular for the segment of low-quality MRIs.

Figure 2: MRI Market Share in Japan



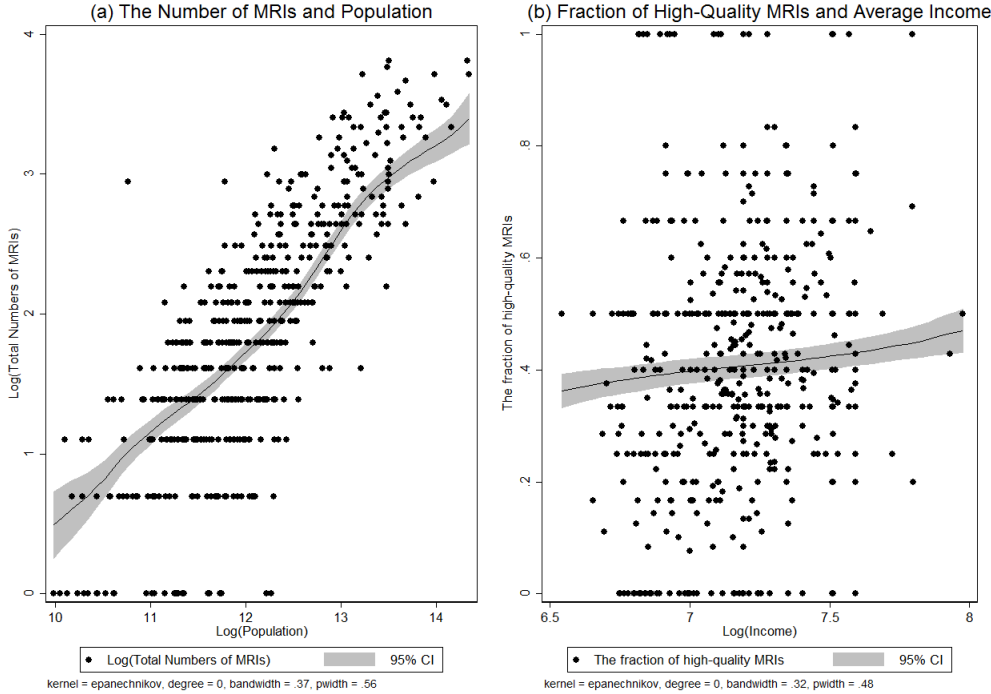
Note: This figure represents the number of MRIs sold by each MRI manufacturer. Gray bars indicate the sales for low-tesla MRIs, while black bars indicate the sales for high-tesla MRIs.

Third, Panel (a) of Figure 3 shows the relationship between the number of MRIs and population for each market. Here we define the market as a geographically distinct medical administration area, called *Niji-Iryoken*, based on the Medical Care Act, excepting some large cities (cities designated by government ordinance and 23 Tokyo special districts) where we use municipalities for the market definition.¹⁰ There are about 1,700 municipalities in

¹⁰These definitions are based on an approximation of patients’ behavior. In large cities, there are sufficient choices nearby and thus people tend to go to local hospitals. On the other hand, in rural areas, there are not many medical institutions nearby and thus people tend to choose medical institutions that cover larger geographical areas, which correspond to the medical administration areas.

Japan and our process results in 523 markets. The figure suggests there is a linear relationship between the logarithm of population and the logarithm of the number of MRIs, implying that the population is one of the most important determinants for the number of MRIs in the market. Although the average income is another important factor that affects MRI adoption, it affects the proportion of low- and high-quality MRIs purchased rather than the total number of MRIs in the market, as indicated in Panel (b) of Figure 3. Even though the slope is not very steep, it is still positive and statistically significant, which suggests that high-quality MRIs are preferred by high-income people and medical institutions take this preference into account when purchasing MRIs.

Figure 3: The Effects of Population and Income on MRI Adoption



Note: Panel (a) shows the relationship between the logarithm of population and the logarithm of the number of MRIs in each market. Panel (b) shows the relationship between the logarithm of average income and the fraction of high-tesla MRIs in each market. Each dot represents one market. In each panel, using a non-parametric approximation, we show the fitted value as a black solid line and the 95% confidence interval as a shaded region.

Lastly, Figure 4 shows the utilization rates for high- and low-quality MRIs. Utilization is defined as the number of patients treated per week divided by the physical capacity of a MRI scanner.¹¹ Panel (a) demonstrates the utilization rates of medical institutions adopting high-

¹¹We compute that the physical capacity of an MRI scanner is 132 per week, assuming that medical

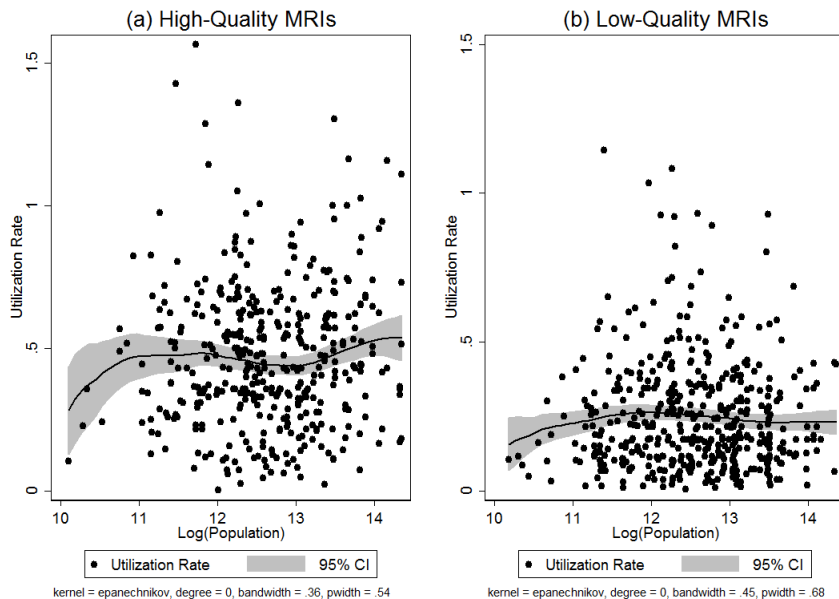
quality MRIs, whereas Panel (b) demonstrates the utilization rates of medical institutions adopting low-quality MRIs. Each dot denotes a medical institution, while the horizontal and vertical axes shows the logarithm of population of the market where the medical institution is located and the utilization rate, respectively. There are two important observations. First, in both panels, medical institutions do not fully utilize their MRIs, suggesting that MRI adoption could be excessive in Japan because the same number of patients could be treated with fewer MRIs. Furthermore, the utilization rates of low-quality MRIs are lower than those of high-quality MRIs, which may reflect the fact that low-quality MRIs are relatively cheap compared to high-quality MRIs and even these low utilization rates are enough to cover the adoption costs. In fact, the average numbers of patients for high- and low-tesla MRIs per week are 64.2 and 34.9, respectively, implying that the average utilization rates for them are 48.6% and 26.4%, respectively. Second, even though the total number of MRI scans increases in population, the utilization rates are roughly constant. As the population increases, the total number of MRIs also increases as in Figure 3, which makes the utilization rates nearly constant regardless of the population.

3 The Model

The goal of this section is twofold. The first goal is to develop a theoretical model of a vertical industry with free entry in the downstream market and show that the social efficiency of the whole economy hinges on the degree of competition in the upstream market. More specifically, we prove that (i) when the upstream market is monopolized, social welfare is improved by *increasing* the degree of upstream market competition, and (ii) when the upstream market is perfectly competitive, social welfare is improved by *decreasing* the degree of upstream market competition. The second goal is to develop and present an empirically tractable model, which we later use with the data. Though the intuition behind our theoretical and empirical models is the same, as is their takeaway message, the theoretical model is different from the empirical model with respect to (i) the downstream prices and (ii) the heterogeneity in both products and firms. Regarding the downstream prices, even though the medical price is fixed in Japan as explained in the previous section, our theoretical model allows the downstream price to be an equilibrium outcome of the competition of downstream firms. On the other hand, our empirical model includes rich heterogeneity in upstream and downstream products and cost structures, whereas our theoretical model

institutions operate 8 hours per day, 5.5 business days per week, and that each scan takes approximately 20 minutes.

Figure 4: Utilization Rates for MRIs



Note: Panel (a) shows the relationship between the logarithm of population and the utilization rate of high-tesla MRIs at each medical institution. Panel (b) shows the relationship between the logarithm of population and the utilization rate of low-tesla MRIs at each medical institution. Each dot represents one medical institution. In each panel, using a non-parametric approximations, we show the fitted value as a black solid line and the 95% confidence interval as a shaded region.

considers a homogeneous environment to derive clear analytical results. Readers who are interested in empirical analysis can proceed directly to Section 3.2.

3.1 The Theoretical Model

We consider an industry that consists of an upstream market and a downstream market. The upstream firms produce an intermediate product which is required for the downstream firms to produce the final product for consumers. In our MRI context, the upstream firms are MRI manufacturers that produce MRIs as intermediate products and the downstream firms are medical institutions that provide MRI scanning services for patients. We consider the following three-stage game. In the first stage, N_u identical upstream firms, a finite and fixed number, simultaneously decide the quantity of a homogeneous intermediate product. All upstream firms possess exactly the same production technology, which is characterized by the linear cost function $c_u(q) = Kq$, where K is fixed and constant. In the second stage, the price of the intermediate product p_u is realized and a large (infinite) number

of identical potential entrants make their entry decisions.¹² Upon entry, each downstream firm purchases one unit of intermediate product which costs p_u and thereby obtains access to a technology. This is characterized by the cost function $c_d(q)$. We assume that $c_d(\cdot)$ is continuous, $c_d(0) = 0$, $c'_d(\cdot) \geq 0$, and $c''_d(\cdot) \geq 0$ for all $q \geq 0$. Lastly, in the third stage, these downstream firms that enter the market play an oligopoly game, for which we do not specify the mode of competition. This model is a natural extension of that of [Mankiw and Whinston \(1986\)](#), which does not consider the upstream market. They treat the entry costs as exogenously given and fixed, whereas our model endogenizes the entry cost of downstream firms as an equilibrium result of competition among upstream firms.

We characterize the subgame perfect equilibrium using backward induction. In the third stage, given that N_d firms have entered the final product market in the second stage, we assume that the equilibrium is symmetric and denote $q(N_d)$ to be the equilibrium output per downstream firm. Knowing what would happen if N_d firms entered the final product market and given the first stage total production quantity, Q_u , we assume that the equilibrium intermediate product price p_u is characterized by the following assumption:

Assumption 1 (Free-Entry Equilibrium) *Suppose Q_u is the aggregate output in the first stage and $P(\cdot)$ denotes the inverse demand function in the final product market, then*

$$P(Q_u \cdot q(Q_u)) \cdot q(Q_u) - c_d(q(Q_u)) - p_u = 0.$$

This assumption corresponds to the free-entry assumption in [Mankiw and Whinston \(1986\)](#) and states that all firms obtain exactly zero profit in a free-entry equilibrium.¹³ Since each entry requires one unit of intermediate product, the number of entrants must be equal to the aggregate output of the intermediate product Q_u in an equilibrium. Given the aggregate output Q_u , what would happen in the third stage can be rationally expected and $Q_u \cdot q(Q_u)$ will be the total final production amount in the third stage. The first term, therefore, is the revenue of each downstream firm and the second term is the production cost, whereas the third term represents the entry cost. This assumption also guarantees the market clearing for the intermediate product by having the price of the intermediate product equal the profit earned by the entrants in the third stage.

¹²Though we do not explicitly specify the exact mechanism that determines prices here, this price determination can be through negotiation or bargaining.

¹³Having exactly zero profit may seem to be a strong assumption because the typical free-entry conditions simply state that the marginal entrant obtains non-negative profit and no additional entry is profitable. We discuss this issue later when we describe our empirical model.

Social Welfare and Competition in the Upstream Market We begin our analysis by defining social welfare as a function of the number of upstream firms, N_u . For the sake of the tractability of our analysis, we ignore the integer problem and treat the number of firms as continuous like [Mankiw and Whinston \(1986\)](#). Given all primitives, we first characterize the equilibrium aggregate output of the intermediate product. Since the first stage is quantity competition with symmetric firms, the equilibrium must be symmetric and, therefore, $Q_u = N_u \cdot q_u$, where q_u denotes the output per upstream firm. The equilibrium production quantity is characterized by the first-order condition given by

$$\frac{\partial p_u}{\partial Q_u} q_u + p_u - K = 0.$$

Now, we can define social welfare as a function of the number of upstream firms, which is given by

$$W(N_u) = \int_0^{Q_u \cdot q(Q_u)} P(s) ds - Q_u \cdot c(q(Q_u)) - Q_u \cdot K$$

subject to $Q_u = N_u \cdot q_u$ and $\frac{\partial p_u}{\partial Q_u} q_u + p_u - K = 0.$

Proposition 1 *Suppose Assumptions 1 and MW1-3, which are the assumptions on the downstream market and the same as those in [Mankiw and Whinston \(1986\)](#), in [Appendix A](#) hold. If the upstream market is monopolized by one firm, then*

$$\frac{\partial W}{\partial N_u} > 0.$$

Moreover, if the price in the upstream market is equal to the marginal cost, then

$$\frac{\partial W}{\partial N_u} \leq 0 \text{ if } p_u = K \text{ with strict inequality if } p(Q_u \cdot q(Q_u)) - c'(q(Q_u)) > 0.$$

Proof: See [Appendix A](#).

This proposition states that the number of downstream firms is socially insufficient if the upstream market is a monopoly, and socially excessive if the upstream market is perfectly competitive. The result suggests that, even in a very simple homogeneous setting like that of [Mankiw and Whinston \(1986\)](#), the sufficiency or excessiveness depends on the degree of competition in the upstream market. It also suggests that ignoring the upstream market would overestimate inefficiency. Furthermore, as argued in [Mankiw and Whinston \(1986\)](#), product differentiation may reverse this bias toward excessive entry and make theoretical prediction ambiguous. In the next subsection, therefore, we build a sufficiently rich model

that captures important features of the MRI industry: its vertical structure, the heterogeneity of both upstream and downstream firms and product differentiation among MRIs, which are the key components of the welfare analysis.

3.2 The Empirical Model

Given our motivation and institutional background, this section describes a structural model that explicitly takes into account the vertical structure of the MRI industry. Our model has three sets of players: (i) MRI manufacturers that produce high- and low-quality MRIs and compete in quantities in each geographical market, (ii) medical institutions, namely hospitals and clinics, that purchase MRIs to offer medical services for patients in the downstream market, and (iii) patients who need to undergo MRI scans to find and cure their diseases.

In order to formally describe our model, we first introduce several notations. Each geographical market is denoted by a subscript $m \in \mathcal{M}$ and characterized by its population, pop_m , and the average weekly income level, y_m . Following the standard definition used by the Japanese government, the medical institutions are categorized into three sets, $\{c, s, l\}$, where c denotes clinics that have less than 20 beds, s denotes small hospitals that have less than 100 beds, and l denotes large hospitals that have 100 beds or more. Each MRI producer $f \in \mathcal{F}$ sells two types of MRI, $q \in \{L, H\}$, where L denotes low-tesla MRIs (less than 1.5 tesla) and H denotes high-tesla MRIs (1.5 tesla or higher). This simplification tremendously eases computational complexity, but still introduces sufficient product differentiation, because these two types of MRI correspond to the reimbursement rates, as is explained in Section 2.

MRI manufacturers play Cournot competition in each geographical market. Although it is natural to use a differentiated product approach in a continuous fashion, such an approach introduces a complication in the second stage adoption game played by medical institutions. Thus, to keep the empirical tractability, we introduce the concept of a *segment*, which is defined as a Cartesian product of hospital types and MRI types, and is described in Table 2. This segmentation captures the differentiation in a discrete fashion and means that from consumers', hospitals' and MRI manufacturers' perspectives, they can at least distinguish among MRIs with different tesla ratings, different hospital types, and the combination of these. From consumers' perspective, each MRI scan is differentiated by the characteristics of the MRI and those of the hospital. From the medical institutions' perspective, each institution has three choices: to adopt a high-tesla MRI, to adopt a low-tesla MRI or to stay out of the MRI treatment market. Hospitals make their decisions strategically based on their

characteristics and the perceived differentiation among consumers. Given this structure, MRI manufacturers and hospitals treat MRIs in different segments differently. MRI manufacturers also strategically decide what quantity to supply in each segment. The price of an MRI can differ in each segment.

Table 2: Concept of Segment

	Clinics (c)	Hospitals	
		Small (s)	Large (l)
Low-tesla MRI	1	3	5
High-tesla MRI	2	4	6

Note: This table visualizes how we define the segment.

3.2.1 Patient Demand for MRI Scanning Services

We first present the patients' demand for MRI scanning services in the downstream market. Our model is closely related to the discrete choice models proposed by [Berry, Levinsohn and Pakes \(1995\)](#) and used by [Nevo \(2001\)](#) and others. [Ho \(2006\)](#) and [Ho \(2009\)](#) applied their methodology to the health economics literature to study the welfare effects of restricted hospital choice in the U.S. and the determinants of hospital networks offered by managed care health insurers, respectively. The indirect utility for patient i in market m choosing medical institution j is defined by

$$u_{ijm} = \begin{cases} \alpha \log(y_m - \delta b_t) + \mathbf{I}'_j \boldsymbol{\beta} + \xi_m + \epsilon_{ijm}, & \text{if } j \neq 0 \\ \alpha \log(y_m) + \epsilon_{i0m}, & \text{otherwise,} \end{cases}$$

where y_m denotes the average income in market m , δb_t denotes the medical treatment price that patients must pay for taking an MRI scan, $\mathbf{I}_j = (i_{t_1j}, \dots, i_{t_Tj})$ denotes a vector of the indicator variables when hospital j is type t , ξ_m denotes a region-specific random effect, and ϵ_{ijm} is a random utility shock.¹⁴ The first term expresses the mean utility per monetary unit, while the second term expresses the utility from the segment to which medical institution j belongs. The model also includes ξ_m to capture region- m -specific effects, as there might be some region-specific factors, such as weather, food and other region- m -specific omitted

¹⁴As empirically studied by [Iizuka \(2012\)](#), there may exist agency problems and some demand might be driven by physicians. (The latter is known as physician-induced demand.) However, such an aspect is out of the scope of this paper due to the data limitations.

variables that potentially affect the probability of becoming sick. All other idiosyncratic factors are included in ϵ_{ijm} .¹⁵

We specify consumer preference as a three-level nested logit model: potential patients first decide whether they will go to a hospital or not. Then, if they decide to go, they must choose a segment sg and, finally, they must decide which hospital or clinic j to visit among the medical institutions in segment sg . Mathematically, we assume that ϵ_{ijm} is decomposed into three parts:

$$\epsilon_{ijm} = \varepsilon_{igm} + (1 - \lambda_2)\varepsilon_{i,sg,m} + (1 - \lambda_1)\varepsilon_{ijm},$$

where ε_{igm} corresponds to the first decision, that of whether to go to a medical institution or not, $\varepsilon_{i,sg,m}$ is the segment-specific utility shock, and ε_{ijm} denotes the hospital or clinic j -specific random utility shock. The first nest captures the individual's state: healthy or sick. Sickness corresponds to a high value of ε_{igm} . The second nest captures the seriousness of the symptoms and diagnoses of patients. For example, a high value of $\varepsilon_{i,6,m}$ leads to a high demand for an MRI scan in a large hospital with a high-tesla MRI. The final nest captures the idiosyncratic heterogeneity in consumer preference within a given segment, such as the distance to the hospital.

From a technical point of view, patients can go to any hospital in Japan. From a practical point of view, however, it is not very common for patients to go to medical institutions in other geographical markets. Therefore, the choice set for patient i living in market m is denoted by \mathcal{J}_{im} , and we include all available hospitals and clinics in market m . This market definition, together with the previous indirect utility function specification, allows us to define the market share for medical institution j in market m in a given week as

$$s_{jm} = \int_{A_j(\alpha, \beta, \lambda)} f(\varepsilon) d\varepsilon, \quad \text{with } A_j(\alpha, \beta, \lambda) = \{\varepsilon | u_{ijm} \geq u_{jkm}, \forall k \neq j\}, \quad (1)$$

where A_{jm} denotes the set of patients who choose medical institution j to provide MRI scanning services and s_{jm} denotes the market share for medical institutions j , which is integral over population.

3.2.2 Medical Institutions' MRI Adoption

The profit maximization problem for medical institution j in market m is given by

$$\max_{a_{jm} \in \{0, L, H\}} \pi_{jm}(a_{jm}, \vec{a}_{-jm}),$$

¹⁵In other words, regardless of the identities of the medical institutions, patients derive exactly the same mean utility from each segment to which medical institution j belongs.

where a_{jm} denotes an action and $\pi_{jm}(a_{jm}, \vec{a}_{-jm})$ denotes a profit function that depends not only on j 's own action a_{jm} but also on the actions of other medical institutions \vec{a}_{-jm} in the same geographical market. For each medical institution, $a_{jm} = 0$ means that no MRIs were purchased, and $a_{jm} = L$ or H means that a low- or high-tesla MRI was purchased, respectively, i.e., our model endogenizes medical institutions' MRI choices upon entry, as in [Mazzeo \(2002\)](#).¹⁶ The profit function for each medical institution j in market m is specified as

$$\pi_{jm}(a_{jm}, \vec{a}_{-jm}) = \begin{cases} \text{pop}_m \cdot s_{jm}(a_{jm}, \vec{a}_{-jm}) b_t - p_{tm}, & \text{if } a_{jm} \neq 0, \\ 0, & \text{otherwise,} \end{cases}$$

where pop_m is the population in market m , which is observed in the data; $s_{jm}(a_{jm}, \vec{a}_{-jm})$ is the market share for j defined in equation (1); b_t is the per-patient monetary transfer from the insurer to a medical institution, which depends on the quality of MRI; and p_{tm} is the MRI price for segment t in market m . We normalize the profit for not adopting MRI as zero, reflecting the fact that medical institutions that do not have MRIs cannot earn any profit from MRI-related services.¹⁷ On the other hand, medical institutions that purchase MRIs can earn some profits: the revenue, the number of treated patients, $\text{pop}_m \cdot s_{jm}(a_{jm}, \vec{a}_{-jm})$, multiplied by the price per treatment, b_t , minus the costs of adopting MRI technology, summarized in p_{tm} . We can rewrite the profit function using only the total number of medical institutions that adopt MRI technology in each segment. Now the post-entry profit function for a medical institution in segment t in market m is given by

$$\tilde{\pi}_{tm}(\vec{Q}_m) = \text{pop}_m \cdot s_{tm}(\vec{Q}_m) \cdot b_t,$$

where \vec{Q} is a vector of total number of MRIs in each segment, i.e., $\vec{Q}_m = (Q_{1m}, Q_{2m}, \dots, Q_{6m})$. This feature allows us to derive the inverse demand function for MRIs in market m . Given the number of MRIs in other segments, medical institutions' willingness to pay for MRIs in segment t must be identical to the post-entry profit and be decreasing in Q_{tm} . Though the existing literature often models the profit function in a reduced-form fashion, our model of the downstream market enables us to express the post-entry profit in a structural fashion. This approach allows us to conduct richer sets of counterfactual analyses.

¹⁶We assume that each medical institution purchases at most one MRI. In our data, 83% of them have just one MRI. Moreover, even though 17% of them have multiple MRIs, some of them own a second MRI for backup purposes or keep an old one due to high scrapping costs.

¹⁷There might be some indirect effects for not offering MRI scanning services, such as reputation "loss." However, this effect is hard to quantify and the literature still has not found hard evidence of it. Therefore, this model avoids dealing with such effects.

As is clear from the expression, the model introduces strategic interaction among medical institutions in a given geographical market, because many previous studies, such as [Schmidt-Dengler \(2006\)](#) and [Hashimoto and Bessho \(2011\)](#), find that there are business-stealing effects in the MRI scanning service industry. If an additional entrant medical institution k adopts MRI technology, the market share for the incumbent medical institutions would decrease. This effect is called the *business-stealing effects*. The magnitude of this effect should depend on the segments of medical institution k and of the incumbents. Our model allows for heterogeneous business-stealing effects within and across segments in a given market,

One might worry about the heterogeneity of medical institutions within a segment, i.e., even within a given segment the degree of substitution could be different. For example, in the segment comprised of large hospitals owning high-tesla MRIs, if two institutions are near to each other, we would expect the substitution rate to be different than if the two institutions were far away from each other. Such heterogeneity is intentionally omitted here in order to keep our model tractable. Though models having such heterogeneity will better approximate the reality, this heterogeneity enormously increases the state space. Our model uses only the total number of medical institutions that adopt MRI technology in each segment. In this sense, our adoption game as played by medical institutions is similar to the entry model of [Bresnahan and Reiss \(1991\)](#), which assumes that firms are completely homogeneous. Our model partially allows us to have heterogeneity by introducing segmentation and, more crucially, when our segmentation becomes more detailed, our model approaches the model that fully takes heterogeneity into account. Therefore, although our way of introducing strategic interaction may look restrictive, this simplification dramatically reduces computational complexity and can be easily extended to introduce more heterogeneity.¹⁸

As pointed out by [Schmidt-Dengler \(2006\)](#), medical institutions have an incentive to adopt MRI technology in order to enhance their reputations and attract additional non-MRI patients as well. In other words, adopting MRI technology has some externalities for other illnesses and thus our normalization might no longer hold. However, this model allows such an effect as well, because p_{tm} can be seen as the real cost of adoption netting out all such effects, rather than a nominal MRI price. Therefore, in essence, by observing (i) medical institutions' adoption decisions, (ii) pop_m , and (iii) b_t in our data, we recover the difference in profits that occurs medical institutions adopt (or do not adopt) MRI technology, which is summarized in p_{tm} . We further discuss this issue in the subsequent subsection where we

¹⁸For example, if we categorize the medical institutions into two groups – centrally located and non-centrally located – we can increase the number of segments from six to twelve.

discuss the marginal cost of MRI production.

3.2.3 Competition Among MRI Producers

Each manufacturer plays a Cournot competition in each segment of market m , meaning that each firm solves the maximization problem

$$\max_{q_f} \pi_f(q_f, q_{-f}),$$

where MRI manufacturer f 's profit is given by

$$\pi_f(q_f, q_{-f}) = \sum_m \pi_{fm}(q_{1m}, \dots, q_{Fm}) = \sum_m \sum_t q_{tfm}(p_{tm} - mc_{tfm}),$$

$q_f = (q_{f1}, \dots, q_{fM})$ and $q_{fm} = (q_{t_1fm}, \dots, q_{t_6fm})$ denote vectors of quantities that manufacturer f produces in each market and quantities that manufacturer f produces for each segment t in market m , respectively, and mc_{tfm} denotes the marginal cost of producing one unit of MRI for firm f in segment t in market m .¹⁹ As in the discussion of p_{tm} , this marginal cost captures the real cost of MRI production, netting out all costs and benefits. Alternatively, we could model all relevant effects and costs such as the privilege effects and installation costs. However, the data only allows us to infer the difference in profits with and without the marginal MRI. Therefore, such effects cannot be separately identified. For our counterfactual analysis, separate identification is not crucial because only the difference between the real cost of MRI production and the real benefit of MRI adoption matters to our welfare analysis.

In order to close the model, we make one more assumption on how the MRI prices are determined. The demand function for MRIs, derived from the medical institutions' post-entry profit, will be a step function, due to the discreteness of the number of MRIs. For example, for a given Q_{-tm} , the inverse demand function for MRI in segment t would be given by Figure 5. Suppose the manufacturers produce three MRIs for segment t in market m . Then, there is a range of price that clears the market, denoted by $(\underline{p}_3, \overline{p}_3]$. If the price is more than \overline{p}_3 , then no more than two medical institutions can earn non-negative profit, resulting in an oversupply of MRIs. If the price is lower than or equal to \underline{p}_3 , at least four

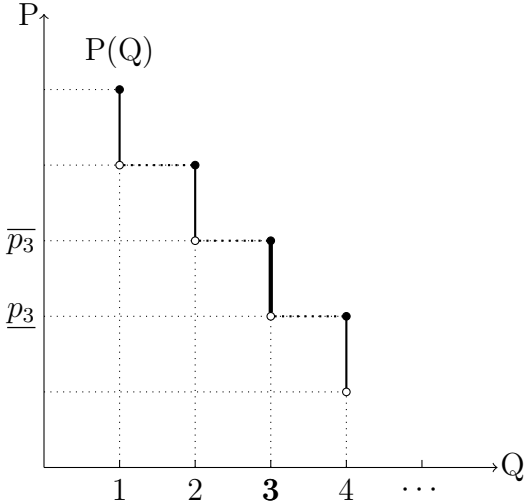
¹⁹Although this quantity competition assumption might seem restrictive, we believe that, in this specific industry, the model can achieve the same outcome by assuming price competition. [Kreps and Scheinkman \(1983\)](#) show that if there is a precommitment in production capacity, price competition leads to the same outcome as quantity competition. In fact, production capacity cannot be easily adjusted in MRI production, similar to machinery production in other industries, and this can be seen as precommitment in production capacity.

medical institutions can enter the market due to free entry, making non-negative profit, which results in an undersupply of MRIs. If the price is in the range of $(\underline{p}_3, \overline{p}_3]$, then three medical institutions purchase MRIs, making non-negative profit, which clears the market. However, there is still indeterminacy in price and we need to make one additional assumption on how the MRI prices are determined.

Assumption 2 *The prices for MRIs are determined by $p_{tm} = \tilde{\pi}_{tm}(\sum_f q_{fm})$.*

This assumption implicitly assumes that MRI manufacturers obtain full surplus and medical institutions earn exactly zero profit. For example, the price of an MRI in the previous example in Figure 5 is equal to \overline{p}_3 . This assumption can be justified if we put some specific structures on the bargaining protocol among the MRI manufacturers and medical institutions, such as that MRI manufacturers make take-it-or-leave-it offers or medical institutions purchase through uniform-price auction with complete information.

Figure 5: Implications for Zero Profit for Hospitals/Clinics



Note: This figure illustrates the implications of the zero-profit condition for medical institutions. $P(Q)$ represents the demand function for MRIs.

Here we assume constant marginal costs and specify that the marginal cost is decomposed into two parts

$$mc_{tfm} = mc_{tf} + e_{tfm},$$

where mc_{tf} denotes the deterministic part of the marginal cost and e_{tfm} denotes the stochastic part of the marginal cost, which follows a normal distribution, $N(0, \sigma_e^2)$. To reduce the number of parameters, we further put a specific function assumption on mc_{tf} : $mc_{tf} =$

$mc_f^L + mc_t$ for low-tesla MRIs and $mc_{tf} = mc_f^H + mc_t$ for high-tesla MRIs. Note that we allow the deterministic part of the marginal cost, mc_{tf} , to be different among segments. We treat the marginal cost in this way to capture the net cost of MRI adoption. The MRI purchase price is not the only cost hospitals pay; MRI installation also carries a cost. Also, MRI adoption may have indirect benefits to hospitals such as reputation enhancement. Since we only observe medical institutions' adoption decisions and number of patients, what we can infer from the data is the net cost of MRI adoption that includes all those costs and benefits. By allowing the marginal cost to be different depending on the segment, we allow the possibility that those costs and benefits may be different among medical institutions.

4 Empirical Implementation and Identification

There are three sets of parameters of interest: (i) the downstream demand parameters, $(\alpha, \beta, \gamma_1, \gamma_2)$, (ii) MRI manufacturers' marginal cost, $\{mc_{tf}\}_{t=L,H,f=1,\dots,F}$, and (iii) two variances of distributional assumptions for the marginal cost σ_ε^2 and the unobserved demand σ_ξ^2 . Let θ denote the vector of the parameters of interest. Given the parameter values, the model predicts two sets of moments: (a) market share for each hospital and clinic in the downstream market, which enables us to identify (i) and one of the parameters in (iii), and (b) market share for each MRI manufacturer, which enables us to identify (ii) and one of the parameters in (iii). Roughly speaking, the latter set of moments contains the same information as the adoption decisions of medical institutions. Essentially, there are two possible ways to estimate our model: estimating all parameters jointly, and estimating the downstream demand parameters first and then the upstream cost parameters, separately. Although efficiency might be improved by employing the former approach, we take the second approach to reduce computational complexity. More precisely, we first estimate some of the downstream demand-side parameters, $\theta_1 = (\alpha/(1 - \lambda_2), \beta_2/(1 - \lambda_2), \dots, \beta_6/(1 - \lambda_2), (\lambda_1 - \lambda_2)/(1 - \lambda_2))$, using the MRI utilization data, denoted by (a). Given the estimated parameters in the first stage, $\hat{\theta}_1$, we construct the objective function with respect to the remaining parameters, $\theta_2 = (\{mc_{tf}\}_{t=1,\dots,6, \forall f}, \lambda_2, \sigma_\xi, \sigma_\varepsilon)$, and estimate these parameters using market shares for MRI producers (or adoption decisions of medical institutions), denoted by (b).

4.1 Estimating Demand Parameters

The demand estimation follows a standardized procedure.²⁰ The nested logit structure induces the following closed-form solution for the market share of each medical institution:

$$\ln(s_{jm}) = \frac{\alpha \log(y_m - \delta b_t) + \beta \mathbf{I}_j + \xi_m}{1 - \lambda_2} + \frac{\lambda_1 - \lambda_2}{1 - \lambda_2} \log(\text{within share in the segment})_j + \text{Market-Specific Constant.}$$

Based on this closed-form solution, our estimation equation can be rearranged as

$$\ln(NP_{jm}) = \frac{\alpha \log(y_m - \delta b_t) + \beta \mathbf{I}_j}{1 - \lambda_2} + \frac{\lambda_1 - \lambda_2}{1 - \lambda_2} \log(w_{jm}) + F_m + \eta_{jm}, \quad (2)$$

where NP_{jm} denotes the number of patients that clinic/hospital j treats per week, w_{jm} denotes the market share within the same segment, F_m is a market-specific fixed effect and η_{jm} denotes the error term.²¹ This fixed effect estimator gives us consistent estimates of $\frac{\alpha}{1-\lambda_2}$, $\frac{\beta}{1-\lambda_2}$ and $\frac{\lambda_1-\lambda_2}{1-\lambda_2}$ and, more importantly, incorporates the possible measurement error in the number of patients.²² Our model predicts that the number of patients for two medical institutions in the same segment in a given market must be exactly the same. This is not the case in the data, however, and we assume that the variations are attributed to the measurement errors that are orthogonal to other variables, i.e., the number of patients in the data must be equal to the number of patients predicted by the model plus the measurement errors.

4.2 Estimating Upstream Supply Parameters

In the upstream market, the manufacturers compete in quantities and the quantities that we observe in the data must satisfy the manufacturers' profit maximization condition

$$\pi_{fm}(q_{fm}; q_{-fm}) \geq \pi_{fm}(q'_{fm}; q_{-fm}) \quad \forall q'_{fm} \text{ and } \forall f,$$

which means that no MRI manufacturer has an incentive to change its output, given the output level of other manufacturers. In many markets, as shown in Section 2.2, q_{tfm} ranges from zero to 10 and this discreteness prevents us from using first-order conditions to estimate this

²⁰See Verboven (1996) for a detailed discussion and derivation of the nested logit model.

²¹In the model, all medical institutions in the same segment are *ex ante* identical and, therefore, the market share within the segment is equal to the inverse of the number of clinics/hospitals in the same segment.

²²We need not use instrumental variables for co-payments nor for the market share within a segment. As co-payments are set by the government and market share within the segment here is deterministic number, there are no worries for endogeneity in prices nor in the market share within the segment.

model. Thus, instead of using first-order conditions, we use inequality conditions to derive the likelihood.²³ Specifically, the inequality condition is decomposed into two conditions:

$$\pi_{fm}(q_{fm}; q_{-fm}) \geq \pi_{fm}((q_{tfm} + 1, q_{-tfm}); q_{-fm}), \quad (3)$$

$$\pi_{fm}(q_{fm}; q_{-fm}) \geq \pi_{fm}((q_{tfm} - 1, q_{-tfm}); q_{-fm}). \quad (4)$$

Rearranging inequality (3) gives us the intuitive inequality

$$\begin{aligned} \overbrace{mc_{tf} + e_{tfm}}^{mc_{tfm}} &\geq p_{tm}((q_{tfm} + 1, q_{-tfm}), q_{-fm}) \\ &\quad - q_{tfm}[p_{tm}(q_m) - p_{tm}((q_{tfm} + 1, q_{-tfm}), q_{-fm})] \\ &\quad - \mathbf{q}_{-tfm}[\mathbf{p}_{-tm}(q_m) - \mathbf{p}_{-tm}((q_{tfm} + 1, q_{-tfm}), q_{-fm})]. \end{aligned}$$

The left-hand side is the marginal cost of producing an additional MRI, while the right-hand side is the marginal revenue of producing an additional MRI, which is decomposed into three terms. The first term is the additional revenue from selling one more MRI in segment t at the new price. The second term is the revenue loss from the decrease in the MRI price in segment t . Holding other manufacturers' production constant, producing one additional MRI leads to a decrease in the price in segment t and the new price will be applied to all units sold in segment t . Thus, we need to multiply the original units sold by the difference between the old and new prices. The last term is the revenue loss from the decrease in MRI prices in segments other than t . Because one additional MRI will be adopted in segment t , medical institutions in other segments will face lower demand and thus their willingness to pay for MRIs will be decreased. Therefore, the sum of these three terms is the marginal revenue and, redefining the right-hand side of inequality as $MR_{tfm,+1}$, we obtain

$$e_{tfm} \geq MR_{tfm,+1} - mc_{tf}. \quad (5)$$

The other inequality (4) also yields a similar inequality condition and combining these two conditions yields

$$MR_{tfm,+1} - mc_{tf} \leq e_{tfm} \leq MR_{tfm,-1} - mc_{tf}, \forall t, f, \text{ and } m.$$

²³Our estimation procedure implicitly assumes that there is no multiplicity of equilibrium. Although Cournot competition typically yields a unique equilibrium outcome, the discreteness of the number of MRIs in our model potentially leads to a multiple equilibrium problem. However, when we compute equilibria using the estimated model, manufacturers' production quantities are unique in more than 80% of the cases. Even if the computed quantities are different in two different equilibria, the difference is typically very small – just one or two units. Thus, we believe that multiplicity is not a serious issue in our model.

If ξ_m is known, the inequality above enables us to calculate the likelihood

$$\mathbf{P}(\text{MR}_{tfm,+1}(\xi_m) - mc_{tf} \leq e_{tfm} \leq \text{MR}_{tfm,-1}(\xi_m) - mc_{tf}),$$

together with the normality assumptions for e_{tfm} . However, in this study, the unobserved market-specific effect ξ_m cannot be fully recovered from the demand estimation due to the measurement errors and the fact that we only observe the market share of 20% of medical institutions. In principle, ξ_m can be inferred from both the downstream demand (the number of patients) and the upstream demand (the number of medical institutions that purchase MRIs). Thus, in order to integrate them out, we use simulated maximum likelihood. The procedure is as follows. First, simulate an m -dimensional vector of ξ , N times, denoted by ξ_{seed}^n and fixed throughout this estimation procedure. Then, estimate the downstream demand and obtain a set of parameters, $\hat{\theta}_1$, that does not depend on the second stage. Then, given θ_2 , calculate the likelihood

$$\mathbf{P}(\text{MR}_{tfm,+1}(\xi_{seed}^n) - mc_{tf} \leq e_{tfm} \leq \text{MR}_{tfm,-1}(\xi_{seed}^n) - mc_{tf})$$

and evaluate the log-likelihood of the data

$$L^n = \sum_m \left[\sum_{f,t} \log \mathbf{P}(\text{MR}_{tfm,+1}^n - mc_{tf} \leq e_{tfm} \leq \text{MR}_{tfm,-1}^n - mc_{tf}) \right].$$

We repeat this procedure to find the parameter that solves the maximization problem

$$\hat{\theta}_{2,MLE} = \arg \max_{\theta_2} \frac{1}{N} \sum_{n=1}^N L^n(\theta_2 | \hat{\theta}_1). \quad (6)$$

5 Results

5.1 Estimation Results

Demand parameters Table 3 shows the results for the first-stage demand estimation. The first row presents the coefficient for the logarithm of income minus price. As expected, the estimation result for this coefficient is positive and statistically significant, implying that the out-of-pocket expenditure negatively affects the demand for MRI scanning services. This finding is consistent with the literature, e.g., [Bhattacharya et al. \(1996\)](#) and [Shigeoka \(2014\)](#), who show that an increase in out-of-pocket expenditure reduces the demand for medical care using the Japanese data. As β_1 (the coefficient for clinics with low-tesla MRI) is normalized

to zero, β_2 through β_6 can be seen to represent consumers' preferences for each type of clinic/hospital compared to clinics that own low-tesla MRIs. Our results indicate that small hospitals with low-tesla MRIs are less preferred than clinics with low-tesla MRIs, whereas other segment types are more preferred. In general, the estimated coefficients suggest that imaging with high-tesla MRIs is more appreciated by high-income patients, because β s for high-tesla MRI is high and the difference in β s is more important than the difference in co-payments for high-income patients relative to low-income patients when they make their choices. This observation is consistent with Panel (b) in Figure 3. Knowing that high-income patients have such strong appreciation for high-tesla MRIs, medical institutions tend to enter the market by purchasing high-tesla MRIs in relatively wealthy markets.

Table 3: Demand Parameters

	Estimates	Std. Err.
$\alpha/(1 - \lambda_2)$: log(Income - Price)	11.27**	4.50
$\beta_2/(1 - \lambda_2)$: Clinic with high MRI	1.57***	0.34
$\beta_3/(1 - \lambda_2)$: Small hospital with low MRI	-0.24*	0.14
$\beta_4/(1 - \lambda_2)$: Small hospital with high MRI	1.37***	0.36
$\beta_5/(1 - \lambda_2)$: Large hospital with low MRI	0.475***	0.13
$\beta_6/(1 - \lambda_2)$: Large hospital with high MRI	1.80***	0.31

Note: This table reports the fixed-effect regression results for equation (2). Significance levels are denoted by *(< 0.1), ** (< 0.05), and ***(< 0.01).

Cost parameters Given the demand estimates, the cost parameters are estimated and demonstrated in Table 4. The estimated cost parameters, roughly speaking, reflect the market shares of the MRI producers, because the relative rankings of market share and marginal cost correspond under Cournot competition. Thus, low market share should be attributed to high marginal cost. GE, the company that has the largest market share for high-tesla MRIs, has the lowest estimated marginal cost for high-tesla MRIs, while Hitachi, the company that has the largest market share for low-tesla MRIs, has the lowest estimated marginal cost for low-tesla MRIs. Other parameters are reported in Table 8 in Appendix B.

Table 4: Estimates for Cost Parameters

	High-Tesla MRI		Low-Tesla MRI	
	Est.	Std. Err.	Est.	Std. Err.
G.E.	3.59***	0.067	1.71***	0.029
Siemens	3.75***	0.069	2.15***	0.039
Philips	3.99***	0.072	2.33***	0.043
Shimadzu	5.05***	0.116	2.20***	0.037
Toshiba	3.58***	0.059	1.87***	0.031
Hitachi	5.17***	0.583	1.40***	0.028

Note: This table reports the MLE estimates defined by (6). The unit is translated to million Japanese Yen per week. Significance levels are denoted by $*$ (< 0.1), $**$ (< 0.05), and $***$ (< 0.01).

5.2 Policy Simulations

5.2.1 Decomposing the Effects of Regulation and Competition

We conduct three sets of counterfactual experiments to disentangle two components: the effects of quantity regulation and taxation, and the effects of competition in the upstream market. We first briefly explain what our counterfactual simulations are and provide further details later when we show the results.

In the first set of experiments, we begin by introducing French-style regulation on quantity, whereby 7.5 MRIs are allowed for every one million people. As this number is extremely small compared to the current Japanese number, which is close to 47 per million people, we also allow this number to be 10 and 23 for every one million people, in order to illustrate how the tightness of regulation affects consumer and producer surplus.²⁴ Second, we introduce a hypothetical sales tax on MRIs to reduce the medical arms race. As anecdotal evidence shows that the MRI prices in Japan are about 25% lower than those in the U.S., our hypothetical tax ratio is set to 30% to roughly approximate the prices in the U.S. The third set of counterfactual experiments examines how the degree of upstream market competition affects welfare. As the [Japan Fair Trade Commission \(2005\)](#) documented, the Japanese MRI market is more competitive than that of other countries, possibly due to severe competition among Japanese MRI producers. Thus, we first reduce the effect of such competition by merging three Japanese firms. Additionally, we also evaluate welfare under situations that

²⁴German adoption regulation is set at about 10 MRIs per million residents, while 23 MRIs per million residents roughly corresponds to one half of the current Japanese MRI adoption rate.

allow for a cartel and for merging all six firms.

Table 5 summarizes the welfare implications for each case. The first column, labeled CV, shows compensating variation, which indicates how much consumers must be compensated for being indifferent between the current situation and the counterfactual one. On the other hand, the second through the seventh columns show each MRI producer's surplus and the eighth column sums them up. The ninth and tenth columns, under Government, show the changes in insurer spending and tax revenue that result from imposing a sales tax. The last column, labeled Social Welfare, sums up compensating variation and MRI producer surplus. As the model imposes the zero-profit condition for hospitals, the profit for hospitals in our model is zero by definition and thus is excluded from Table 5.²⁵ Similarly, Table 6 summarizes the numbers of low- and high-tesla MRIs sold by each MRI manufacturer under these counterfactual scenarios, while Table 7 demonstrates the utilization rate in each counterfactual scenarios and the changes in the number of patients compared to the current no regulation situation. In our data, the average utilization rates for low-tesla and high-tesla MRIs are about 25% and 50%, respectively, and thus, in all scenarios except for quantity regulation, we assume that the utilization rate cannot exceed 100%, which is four and two times more than the current level, respectively.

²⁵Alternatively, this MRI producer surplus can be seen as the sum of MRI producer surplus and medical institution surplus. Social welfare is solely determined by MRI production quantity and would not be affected by the surplus distribution among MRI producers and hospitals.

Table 5: Welfare change based on the degree of upstream market competition

CV	Producer Surplus								Δ Gov.		Social Welfare
	GE	Siemens	Philips	Shimadzu	Toshiba	Hitachi	Total	Spending	Revenue		
Current	-	1.065	0.668	0.447	0.186	0.902	1.123	4.390	-	-	4.390
Regulation 7.5	-2.351	1.953	1.395	1.084	0.494	1.829	1.948	8.702	-0.777	-	7.129
Regulation 10	-1.948	1.973	1.390	1.085	0.482	1.851	1.887	8.667	-0.630	-	7.349
Regulation 23	-0.820	1.645	1.108	0.814	0.363	1.490	1.576	6.995	-0.257	-	6.431
Tax 30%	-0.512	0.699	0.429	0.252	0.104	0.588	0.818	2.888	-0.193	3.862	6.432
JPN Merge	-0.333	1.700	1.246	1.049	2.055	2.055	6.050	6.050	-0.106	-	5.823
Cartel	-1.200	1.605	1.154	0.866	0.282	1.439	1.488	6.883	-0.403	-	6.037
Monopoly	-2.405	9.247	9.247	9.247	9.247	9.247	9.247	9.247	-1.593	-	8.436

Note: This table summarizes the results of the counterfactual simulations. The first column reports the compensating variation (CV), normalized by the current utility level. Thus, a negative CV means that the consumer must be compensated by positive monetary transfer to achieve the current utility level. The second through eighth columns reports producer surplus. The ninth column describes the change in the health insurer's spending. The negative numbers indicate spending that is less than the current amount. The tenth column shows the tax revenue. The last column represents social welfare by summing up CV, the total producer surplus, the change in government spending and the tax revenue. The unit is billion Yen per week.

Table 6: Changes in the Number of MRIs

	GE		Siemens		Philips		Shimadzu		Toshiba		Hitachi		Total		
	L	H	L	H	L	H	L	H	L	H	L	H	L	H	Total
Data	512	523	182	464	99	381	237	47	328	482	1,473	7	2,831	1,904	4,735
Model (Fit)	534	478	157	451	76	363	257	45	335	513	1,374	38	2,733	1,888	4,621
Regulation 7.5	113	117	36	109	17	85	47	10	64	117	293	8	570	446	1,016
Regulation 10	139	154	44	143	19	112	62	14	82	155	373	11	719	589	1,308
Regulation 23	282	309	86	289	41	229	127	29	17	319	770	25	1,481	1,200	2,681
Tax 30 %	430	311	130	310	56	238	182	20	247	347	1075	14	2,120	1,240	3,360
JPN Merge	628	501	242	510	146	467	(1208, 337)						2,224	1,815	4,039
Cartel	124	243	61	236	42	180	107	16	130	255	595	14	1,499	944	2,093
Monopoly						(1829, 80)							1,829	80	1,909

Note: This table summarizes the number of MRIs produced by each manufacturer in the data and under counterfactual scenarios. L and H represent low- and high-tesla MRIs, respectively.

Table 7: Capacity Utilization and Changes in the Number of Patients

	Utilization Rate		Number of Patients		
	Low	High	Low	High	Total
Regulation 7.5	88.2%	104.7%	73.6%	49.5%	57.4%
Regulation 10	74.6%	97.3%	78.6%	60.7%	66.5%
Regulation 23	42.5%	68.5%	92.1%	87.1%	88.7%
Tax 30%	35.0%	70.8%	108.9%	93.0%	98.2%
JPN Merger	27.3%	53.9%	88.8%	103.5%	98.7%
Monopoly	76.4%	94.0%	204.5%	8.0%	72.0%
Cartel	52.3%	76.4%	87.9%	76.3%	80.1%

Note: This table summarizes capacity utilization and changes in the number of patients for each counterfactual scenario. The first and second columns show the utilization rates for low- and high-tesla MRIs, respectively. First we calculate the proportional change, compared to the model prediction, and then multiply by the utilization rates in the data to obtain the utilization rates for each counterfactual scenario. The third through fifth columns represent the number of patients, compared to the model prediction.

Introduction of French-style regulation We first examine the effects of introducing French-style regulation. The second through fourth rows depict the results for regulation specifying 7.5, 10 and 23 MRIs per million people, respectively. The procedure of this policy experiment is as follows: we first calculate the number of MRIs that should be allocated in each geographical market. If the data indicates that the actual number of MRIs is greater than this hypothetical number, we then shrink the market while fixing the market shares constant, i.e., we proportionally reduce each MRI producer’s production amount. Thus, roughly speaking, the market share must be the same as the first row, though there might be some differences due to the integer problem.

There are two important observations in these results. First of all, introduction of French-style quantity regulation would increase social welfare in all cases. These welfare gains come largely from the increase in producer surplus: in all cases, the MRI manufacturers would reduce their production amounts and be able to charge much higher prices for MRIs, which would drive up their profits. On the other hand, due to the decrease in the number of medical institutions that adopt MRIs, patients’ choice sets would shrink substantially, resulting in a lower consumer surplus. In fact, this decrease in consumer surplus is not only driven by the shrinkage of choice sets, but also driven by the fact that some potential patients decide not to go to medical institutions. For example, only 57.4% of the current patients would

go to the medical institutions under Regulation 7.5, according to the last column in Table 7.²⁶ Thus the Japanese government must compensate consumers to maintain their current utility level. Overall, the former welfare gain in producer surplus exceeds the latter welfare loss in consumer surplus, as business-stealing effects in the downstream market are very severe in the current situation. This first observation essentially tells us that the current Japanese *laissez-faire* policy on MRI adoption results in excessive adoption of MRIs and social inefficiency.

The second observation is that tighter regulation might not necessarily enhance social welfare. When comparing the three regulation levels, the middle one, Regulation 10, achieves the highest social welfare. This observation is particularly important as it points out a limitation of regulation. There is no doubt that the current number of MRIs under *laissez-faire* policy is not optimal. At the same time, tight regulation such as Regulation 7.5 would not provide optimal allocation either. There must exist a level of regulation between 7.5 (French regulation) and 23 (roughly half of the current number of MRIs per million people in Japan) that maximizes social welfare. Therefore, when designing regulation, the government must recognize such a trade-off between consumer and producer surplus and choose an optimal level of regulation.

Introduction of a Sales Tax Another possible policy intervention that could help mitigate the excess adoption of MRIs is direct taxation of MRI sales. As expected, the number of MRIs, consumer surplus and producer surplus would decrease. However, the tax revenue would exceed the sum of these decreases, meaning that this policy could potentially achieve a Pareto-improving allocation by redistributing the tax revenue to producers and consumers. Moreover, note that the decrease in the number of patients is only about 1.8% according to Table 7. Thus, the decrease in consumer surplus is mostly due to the shrinkage of the choice sets rather than the decrease in the number of total patients taking MRI scans.

One important distinction between our paper and the existing literature on free entry is that the tax pass-through rate hinges on the market structure in the upstream market. In the case of perfect competition in the upstream market, the sales tax on MRIs will be fully reflected in the price. However, in the case of monopoly or oligopoly, only some fraction of the tax will be passed, because the monopolistic firm or oligopolistic firms can adjust their quantities. Therefore, when designing policies in vertical markets, policy makers must take

²⁶Note that, in the case of Regulation 7.5, the utilization rate for high-tesla MRIs is slightly above 100%, indicating that the capacity constraint would be violated. Thus, the medical institutions might need to operate a little bit longer to implement this hypothetical regulation.

into account the vertical structure of the industry.

Softening Competition in the Upstream Market Finally, we study the impacts of changing the degree of upstream market competition. To illustrate the importance of the degree of upstream market competition, we consider three counterfactual scenarios. First, we merge three Japanese firms together (see JPN Merge, the sixth row of Table 5). Under this scenario, the merged firm would employ the best production technology available among the three Japanese firms in each market. In the second scenario, we allow all firms to collude to maximize the industry profit (see Cartel, the seventh row of Table 5). When working as a cartel, given the current market share, firms proportionally reduce their production amounts to maximize the industry profit, which is referred to as *Proportional Reduction* by Schmalensee (1987). The last scenario allows the merging of all six firms into a monopolist in the upstream market (see Monopoly, the eighth row of Table 5). A newly merged monopolist would be able to employ the best production technology for each market, i.e., the firm that has the lowest marginal cost, including stochastic shocks, produces all high-/low-tesla MRIs for each market. Notice that the difference between Cartel and Monopoly is whether there is an efficiency gain from production reallocation. In the case of a monopoly, the merged firm can employ the best technology and thus reallocate the production to the most efficient firms, whereas, in the case of a cartel, every firm must produce MRIs regardless of the efficiency of their technologies and there are no efficiency gains from product reallocation.

In all cases, softening competition in the upstream market would increase social welfare, although all such exercises are considered to be anti-competitive. The basic mechanism is similar to the introduction of quantity regulation in the downstream market. As the current number of MRIs in Japan is excessive, reducing the number of MRIs mitigates business-stealing effects and results in higher social welfare. Softening competition would allow MRI manufacturers to increase their mark-ups, which would discourage adoption of MRIs by medical institutions. Notice that as the degree of upstream market competition is softened from the current situation to JPN Merger, Cartel and Monopoly, social welfare increases. The softer the competition in the upstream market, the more MRI manufacturers internalize the business-stealing effects in the downstream market when they decide how many MRIs to produce.

In the case where three Japanese firms are merged, the total number of MRIs would dramatically decrease, as indicated in Table 6. This total number of MRIs is slightly larger than the number of MRIs per million people in the U.S. Notably, as demonstrated in Table

6, the number of low-tesla MRIs would substantially decrease in this case, triggering an increase in high-tesla MRI production by foreign firms, in particular, Siemens and Philips. In this way, there would be a shift from low- to high-tesla MRIs and consumers who prefer high-tesla MRIs would be better off, whereas some consumers who prefer low-tesla MRIs would be worse off. Therefore, the decrease in consumer welfare would be relatively small, given the large decrease in the number of MRIs.

A comparison of the results for the Cartel and Monopoly highlights the reallocation effect. In Table 6, when working as a cartel, MRI manufacturers produce more low-tesla MRIs than high-tesla MRIs, as they cannot reallocate their productions. In the case where all manufacturers are merged, the merged MRI manufacturers would produce even more low-tesla MRIs than high-tesla MRIs, further internalizing the business-stealing effect among medical institutions in the downstream market. In other words, under the case of monopoly, the merged firm is able to charge high prices by reducing the production quantity and increasing utilization rates as in Table 7, whereas currently MRIs are not fully utilized by medical institutions and the MRI manufacturers cannot charge such high prices.

Finally we would like to emphasize the importance of regulated medical treatment prices. Dating back to 2008, the difference in MRI scanning and associated prices for high- and low-tesla MRI is relatively small. Thus, if a medical institution can fully utilize the purchased MRI, the maximum revenues from high- and low-tesla MRIs are not so different from the medical institutions' point of view. Knowing this, under the case of monopoly, the merged monopolist tends to produce low-tesla MRI, because the production cost for low-tesla MRIs is much lower than that for high-tesla MRIs and the merged monopolist can fully internalize the business-stealing effect in the downstream market. Therefore, the design of the medical treatment prices may also affect the medical arms races. This could be a good topic for future research.

6 Conclusion

The recent increases in health care expenditures have led to the intense scrutiny of inefficiency arising from the medical arms race. Although the literature attempts to identify the existence of such inefficiencies, there are few papers that attempt to quantify the welfare implications. This paper, therefore, develops and estimates a tractable model of the medical arms race, and quantifies the welfare loss caused by the medical arms race in the context of MRI adoption. Specifically, we model the medical arms race with free entry (no regulation of

MRI adoption) of medical institutions and find that regulation or introduction of a sales tax helps restore efficiency. Furthermore, our model also allows us to quantify how competition in the upstream market affects social welfare. Unlike a common antitrust argument, in an industry with a vertical structure, softening the competition does not necessarily reduce social welfare. These findings shed light on a mechanism that determines how medical arms races result in social inefficiency and offer new insight into antitrust policies in industries with vertical structure.

Appendix A Proof of Proposition 1

Appendix A.1 Assumptions in **Mankiw and Whinston (1986)**

Assumption MW1. $Nq(N) > \hat{N}q(\hat{N})$ for all $N > \hat{N}$ and $\lim_{N \rightarrow \infty} Nq(N) = M < \infty$ for some constant M .

Assumption MW2. $q(N) < q(\hat{N})$ for all $N > \hat{N}$.

Assumption MW3. $P(Nq(N)) - c'_d(q(N)) \geq 0$ for all N where $P(Q)$ denotes the inverse demand function in the final good market and $P'(Q) < 0$.

Appendix A.2 Proof of Proposition 1

$$\begin{aligned}
\frac{\partial W}{\partial N_u} &= \frac{\partial(Q_u q(Q_u))}{\partial N_u} P(Q_u q(Q_u)) - \frac{\partial Q_u}{\partial N_u} c(q(Q_u)) - Q_u \frac{\partial Q_u}{\partial N_u} \frac{\partial q(Q_u)}{\partial Q_u} c'(q(Q_u)) - \frac{\partial Q_u}{\partial N_u} K \\
&= \frac{\partial Q_u}{\partial N_u} q(Q_u) P(Q_u q(Q_u)) + Q_u \frac{\partial Q_u}{\partial N_u} \frac{\partial q(Q_u)}{\partial Q_u} P(Q_u q(Q_u)) \\
&\quad - \frac{\partial Q_u}{\partial N_u} c(q(Q_u)) - Q_u \frac{\partial Q_u}{\partial N_u} \frac{\partial q(Q_u)}{\partial Q_u} c'(q(Q_u)) - \frac{\partial Q_u}{\partial N_u} K \\
&= \frac{\partial Q_u}{\partial N_u} (P(Q_u q(Q_u)) q(Q_u) - c(q(Q_u)) - p_u) + \frac{\partial Q_u}{\partial N_u} (p_u - K) \\
&\quad + \frac{\partial Q_u}{\partial N_u} Q_u \frac{\partial q(Q_u)}{\partial Q_u} (P(Q_u q(Q_u)) - c'(q(Q_u))) \\
&= \frac{\partial Q_u}{\partial N_u} \left(-\frac{\partial p_u}{\partial Q_u} q_u + Q_u \frac{\partial q(Q_u)}{\partial Q_u} (P(Q_u q(Q_u)) - c'(q(Q_u))) \right) \\
&= \frac{\partial Q_u}{\partial N_u} \left(-\frac{\partial q(Q_u)}{\partial Q_u} (P(Q_u q(Q_u)) - c'(q(Q_u))) \frac{Q_u}{N_u} - \frac{\partial P(Q_u q(Q_u))}{\partial Q_u} q(Q_u) \frac{Q_u}{N_u} \right. \\
&\quad \left. + Q_u \frac{\partial q(Q_u)}{\partial Q_u} (P(Q_u q(Q_u)) - c'(q(Q_u))) \right).
\end{aligned}$$

When $N_u = 1$, then

$$\frac{\partial W}{\partial N_u} = -\frac{\partial Q_u}{\partial N_u} \frac{\partial P(Q_u q(Q_u))}{\partial Q_u} q(Q_u) \frac{Q_u}{N_u} > 0.$$

Also, if $p_u = K$, then $\frac{dp_u}{dQ_u} q_u = 0$ and, therefore,

$$\frac{\partial W}{\partial N_u} = \frac{\partial Q_u}{\partial N_u} Q_u \frac{\partial q(Q_u)}{\partial Q_u} (P(Q_u q(Q_u)) - c'(q(Q_u))) \leq 0,$$

with strict inequality if $P(Q_u q(Q_u)) - c'(q(Q_u)) > 0$.

Appendix B Remaining Estimated Parameters

Table 8: Estimates for other parameters

	Estimates	Std. Err.
First Stage Parameters		
$(\lambda_1 - \lambda_2)/(1 - \lambda_2)$: First Stage Nest	0.03	0.09
Second Stage Parameters		
β_0 : Constant in the indirect utility	-5.56***	0.11
λ_2 : Lower nest parameter	0.95***	0.001
mc_3 : Small hospitals with low-tesla specific cost	3.84***	0.93
mc_4 : Small hospitals with high-tesla specific cost	0.37***	0.01
mc_5 : Large hospitals with low-tesla specific cost	-2.28***	0.59
mc_6 : Large hospitals with high-tesla specific cost	0.41***	0.11
σ_ε^H : Variance for low-tesla MRI	0.63***	0.01
σ_ε^L : Variance for high-tesla MRI	0.94***	0.17
σ_ξ : Variance for market random effects	11.49***	0.76

Note : This table summarizes the remaining estimation results. The first stage results come from the fixed-effect regression results for equation (2) and the second stage results come from the MLE estimates defined by (6). The unit is in thousand Japanese Yen per week for mc_3 , mc_4 , mc_5 and mc_6 and million Japanese Yen per week for σ_ε . Significance levels are denoted by *(< 0.1), ** (< 0.05), and *** (< 0.01).

References

- Baker, Laurence C.**, “Managed Care and Technology Adoption in Health Care: Evidence from Magnetic Resonance Imaging,” *Journal of Health Economics*, 2001, *20* (3), 395–421.
- , “Acquisition of MRI Equipment by Doctors Drives Up Imaging Use and Spending,” *Health Affairs*, 2010, *29* (12), 2252–2259.
- **and Ciaran S. Phibbs**, “Managed Care, Technology Adoption, and Health Care: The Adoption of Neonatal Intensive Care,” *RAND Journal of Economics*, 2002, *33* (3), 524–548.
- Berry, Steven T. and Joel Waldfogel**, “Free Entry and Social Inefficiency in Radio Broadcasting,” *RAND Journal of Economics*, 1999, *30* (3), 397–420.
- , **James Levinsohn, and Ariel Pakes**, “Automobile Prices in Market Equilibrium,” *Econometrica*, 1995, *63* (4), 841–890.
- Bhattacharya, Jayanta, William B. Vogt, Aki Yoshikawa, and Toshitaka Nakahara**, “The Utilization of Outpatient Medical Services in Japan,” *Journal of Human Resources*, 1996, *31* (2), 450–476.
- Bresnahan, Timothy F. and Peter C. Reiss**, “Entry and Competition in Concentrated Markets,” *Journal of Political Economy*, 1991, *99* (5), 977–1009.
- Chandra, Amitabh and Jonathan Skinner**, “Technology Growth and Expenditure Growth in Health Care,” *Journal of Economic Literature*, 2012, *50* (3), 645–680.
- Crawford, Gregory S. and Ali Yurukoglu**, “The Welfare Effects of Bundling in Multi-channel Television Markets,” *American Economic Review*, 2012, *102* (2), 643–85.
- Ghosh, Arghya and Hodaka Morita**, “Free Entry and Social Efficiency under Vertical Oligopoly,” *RAND Journal of Economics*, 2007, *38* (3), 541–554.
- Hashimoto, Chiyo and Shun-ichiro Bessho**, “Installation and Utilization of MRI scanners in Japan,” *Quarterly of Social Security Research*, 2011, *47* (2), 175–190. (in Japanese).
- Ho, Katherine**, “The Welfare Effect of Restricted Hospital Choice in the US Medical Care Market,” *Journal of Applied Economics*, 2006, *21* (7), 1039–1079.
- , “Insurer-Provider Networks in the Medical Care Market,” *American Economic Review*, 2009, *99*(1), 393–430.
- **and Robin S. Lee**, “Insurer Competition in Health Care Markets,” 2015. Unpublished Manuscript.
- Ho, Vivian, Meei-Hsiang Ku-Goto, and James G. Jollis**, “Certificate of Need (CON) for Cardiac Care: Controversy over the Contributions of CON,” *Health Services Research*, 2009, *44* (2), 483–500.
- Iizuka, Toshiaki**, “Physician Agency and Adoption of Generic Pharmaceuticals,” *American Economic Review*, 2012, *102* (6), 2826–2858.
- Imai, Shinya, Toshio Ogawa, Kouhei Tamura, and Tomoaki Imamura**, “A Thought on the Effects of the Installed MRIs on Hospital Management in Japan (Wagakunide Dounyusareta MRI no ByouinKeiei ni Ataeru Eikyouni Kansuru Ichi Kousatsu),” *Japan Journal of Medical Informatics*, 2012, *32*, 828–830. (in Japanese).

- Japan Fair Trade Commission**, “Iryoukiki no Ryutsujittai ni Kansuru Chosahoukokusho (Research Report on Distribution of Medical Devices),” 2005.
- Jia, Panle and Parag A. Pathak**, “The Costs of Free Entry: An Empirical Study of Real Estate Agents in Greater Boston,” *RAND*, 2015, *46* (1), 103–145.
- König, Hans-Helmut**, “Diffusion of High-Cost Medical Devices: Regulations in Four European Member States,” in “Health Care and its Financing in the Single European Market,” Amsterdam, 1998, pp. 150–166.
- Kreps, David M. and Jose A. Scheinkman**, “Quantity Precommitment and Bertrand Competition Yield Cournot Outcomes,” *Bell Journal of Economics*, 1983, *14* (2), 326–337.
- Mankiw, Gregory N. and Michael D. Whinston**, “Free Entry and Social Inefficiency,” *RAND Journal of Economics*, 1986, *17* (1), 48–58.
- Maruyama, Shiko**, “Socially Optimal Subsidies for Entry: The Case of Medicare Payments to HMOs,” *International Economic Review*, 2011, *52* (1), 105–129.
- Mazzeo, Michael J.**, “Product Choice and Oligopoly Market Structure,” *RAND Journal of Economics*, 2002, *33* (2), 1–22.
- Nevo, Aviv**, “Measuring Market Power in the Ready-to-Eat Cereal Industry,” *Econometrica*, 2001, *69*(2), 307–342.
- Sari, Nazmi**, “Chapter 8 Competition and Market Concentration,” in “Evaluating Hospital Policy and Performance: Contributions from Hospital Policy and Productivity Research (Advances in Health Economics and Health Services Research, Volume 18),” Emerald Group Publishing Limited, 2007.
- Schmalensee, Richard**, “Competitive Advantage and Collusive Optima,” *International Journal of Industrial Organization*, 1987, *5* (4), 351–367.
- Schmidt-Dengler, Phillip**, “The Timing of New Technology Adoption: The Case of MRI,” *Unpublished Manuscript*, 2006.
- Shigeoka, Hitoshi**, “The Effect of Patient Cost Sharing on Utilization, Health, and Risk Protection,” *American Economic Review*, 2014, *104* (7), 2152–2184.
- Verboven, Frank**, “International Price Discrimination in the European Car Market,” *RAND Journal of Economics*, 1996, *27* (2), 240–268.
- Villas-Boas, Sofia Berto**, “Vertical Relationships between Manufacturers and Retailers: Inference with Limited Data,” *Review of Economic Studies*, 2007, *74* (2), 625–652.
- Zabinski, Zenon**, “Essays on the Economics of Hospital Quality Choice.” PhD dissertation, Northwestern University 2014.