

Blood–brain barrier leakage increases with small vessel disease in acute ischemic stroke

Francesco Arba, MD,
PhD
Richard Leigh, MD
Domenico Inzitari, MD
Steven J. Warach, MD,
PhD
Marie Luby, PhD
Kennedy R. Lees, MD
On behalf of the STIR/
VISTA Imaging
Collaboration

Correspondence to
Dr. Arba:
francesco.arba@unifi.it

ABSTRACT

Objective: In patients with acute ischemic stroke, we aimed to investigate the relation between preexisting small vessel disease (SVD) and the amount of blood-brain barrier (BBB) leakage in ischemic and nonischemic area before IV thrombolysis.

Methods: We retrospectively accessed anonymous patient-level data from the Stroke Imaging Repository and the Virtual International Stroke Trials Archive resources and included patients treated with IV thrombolysis with pretreatment MRI. We rated SVD features using validated qualitative magnetic resonance (MR) scales. Leakage of BBB was assessed with postprocessing of perfusion-weighted images. We evaluated associations between SVD features (individually and summed in a global SVD score) and BBB leakage using linear regression analysis, adjusting for major clinical confounders.

Results: A total of 212 patients, mean age (\pm SD) 69.5 years (\pm 16.1), 102 (48%) male, had available MR before IV thrombolysis. Evidence of BBB leakage was present in 175 (80%) and 205 (94%) patients in the ischemic and nonischemic area, respectively. Lacunar infarcts ($\beta = 0.17$, $p = 0.042$) were associated with BBB leakage in the ischemic area, and brain atrophy was associated with BBB leakage in both ischemic ($\beta = 0.20$, $p = 0.026$) and nonischemic ($\beta = 0.27$, $p = 0.001$) areas. Increasing SVD grade was independently associated with BBB leakage in both ischemic ($\beta = 0.26$, $p = 0.007$) and nonischemic ($\beta = 0.27$, $p = 0.003$) area.

Conclusions: Global SVD burden is associated with increased BBB leakage in both acutely ischemic and nonischemic area. Our results support that SVD score has construct validity, and confirm a relation between SVD and BBB disruption also in patients with acute stroke. *Neurology*® 2017;89:2143–2150

GLOSSARY

ANOVA = analysis of variance; **BBB** = blood-brain barrier; **FLAIR** = fluid-attenuated inversion recovery; **MPD** = mean permeability derangement; **MR** = magnetic resonance; **NIHSS** = NIH Stroke Scale; **OTT** = onset-to-treatment time; **ROI** = region of interest; **rtPA** = recombinant tissue plasminogen activator; **SVD** = small vessel disease; **TTP** = time-to-peak; **VSS** = Van Swieten Scale.

Small vessel disease (SVD) refers to a wide range of pathologic processes that affect microcirculation in the brain.¹ Effects of SVD on brain parenchyma can be detected in vivo with either CT or magnetic resonance (MR) scan. Imaging phenotypes of SVD include white matter changes, lacunar strokes, cerebral microbleeds, enlarged perivascular spaces, and brain atrophy.² Moreover, postmortem studies have identified microscopic pathologic features, such as cortical microinfarcts and changes in the normal-appearing white matter, which are undetectable with conventional imaging, suggesting that the SVD seen on imaging studies is only part of a larger spectrum.³ Recently, the concept that a global estimate of SVD may provide a better overview of the effect of the pathology on the brain than one single SVD feature resulted in the development of a combined score,⁴ which has been validated in regards to cognitive status.⁵

Supplemental data at Neurology.org

From the NEUROFARBA Department (F.A., D.I.), University of Florence, Italy; National Institute of Neurological Disorders and Stroke (R.L., M.L.), NIH, Bethesda, MD; Institute of Cardiovascular and Medical Sciences (F.A.), Queen Elizabeth University Hospital, Glasgow, UK; Department of Neurology (S.J.W.), Dell Medical School, University of Texas at Austin; and Institute of Cardiovascular & Medical Sciences (K.R.L.), University of Glasgow, UK.

Coinvestigators are listed at Neurology.org.

Go to Neurology.org for full disclosures. Funding information and disclosures deemed relevant by the authors, if any, are provided at the end of the article.

SVD has been associated with dysfunction of the blood–brain barrier (BBB).⁶ Animal models using chronic cerebral hypoperfusion to produce SVD⁷ have identified deficits of BBB integrity, and it has been suggested that SVD may lead to BBB damage through endothelial dysfunction⁸ and subsequent inflammatory process.⁹ Conversely, some authors have hypothesized that BBB disruption itself may play a pathogenic role in SVD. In fact, BBB leakage is present in normal-appearing white matter in patients with leukoaraiosis,¹⁰ and areas of normal-appearing white matter with BBB leakage seems to predate development of white matter changes.¹¹ However, SVD is a composite product of various imaging features, and it is not known whether combining different rather than single SVD features could provide information on the amount of BBB disruption. In this cross-sectional study of patients with acute ischemic stroke suitable for treatment with recombinant tissue plasminogen activator (rtPA), we sought to investigate the associations between increasing grade of individual and summed imaging markers consistent with SVD and levels of BBB leakage within the following:

1. The acutely ischemic region
2. The regions remote from acute ischemia

METHODS Patients. We accessed patient-level data from the Stroke Imaging Repository/Virtual International Stroke Trials Archive resource to perform a retrospective analysis. We included patients with acute ischemic stroke with available MRI before IV thrombolytic treatment with rtPA. All patients included in the present study received rtPA after MR scanning.

Clinical variables of interest included age, sex, and baseline (before rtPA treatment) variables, such as stroke severity assessed with NIH Stroke Scale (NIHSS), blood glucose, blood pressure, and time from stroke symptoms onset to rtPA administration (onset-to-treatment time [OTT]), as a surrogate of time from symptom onset to brain imaging. We included anamnestic relevant cardiovascular risk factors such as hypertension, diabetes, atrial fibrillation, hypercholesterolemia, and history of smoking (current and past).

SVD assessment. A stroke neurologist (F.A.) trained in MR assessment for SVD and blinded to clinical and BBB leakage data rated all the available scans (T1, T2, fluid-attenuated inversion recovery [FLAIR] sequences) for presence and severity of SVD features, according to Standards For Reporting Vascular Changes on Neuroimaging recommendations.² An expert stroke physician (D.L.) cross-checked the ratings. Although previous attempts of SVD score also included microbleeds and enlarged perivascular spaces,⁴ to allow transferability of methods to CT, we only considered MR surrogates of SVD detectable with CT scan. We therefore rated preexisting lacunes, white matter hyperintensities, and brain atrophy. We defined lacunes as round CSF isointense

lesions measuring ≤ 20 mm in diameter on axial section in the white matter, basal ganglia, or brainstem on T1, T2, or FLAIR sequences. We graded white matter hyperintensities as 0–2 according to the Van Swieten Scale (VSS) in anterior and posterior periventricular white matter to obtain a 5-point ordinal scale (0–4).¹² Brain atrophy was defined as deep and cortical, and rated as none, mild-moderate and severe against a reference MR brain template, then we combined the deep and cortical scores into a 5 point ordinal scale (0–4).¹³

For assessment of total SVD burden, we built a combined aggregate SVD score as follows: we summed the scores of white matter changes, lacunes, and brain atrophy, assigning 1 point for each of the following: severe white matter changes (VSS ≥ 3), lacunes (≥ 2), and severe brain atrophy (≥ 3). The resulting 4-point ordinal score evaluated the global burden of SVD from 0 (no imaging features of severe SVD) to 3 (imaging features of SVD scored as severe for each imaging variable). The aforementioned SVD score has been previously evaluated on clinical outcomes¹⁴ and white matter perfusion.¹⁵

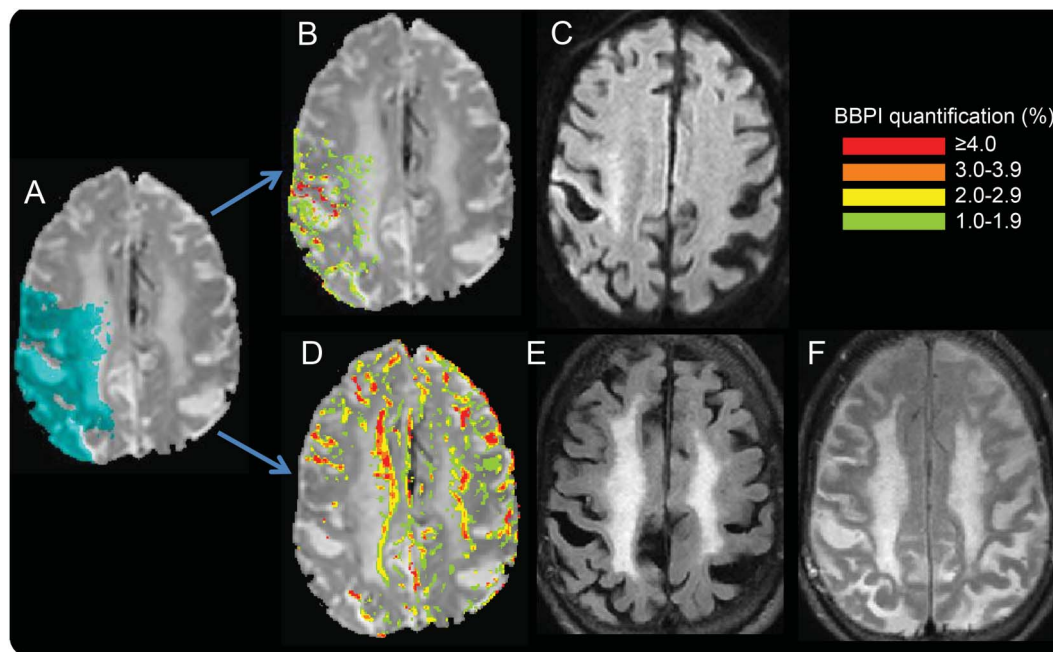
BBB leakage assessment. BBB leakage was calculated by one author (R.L.) blinded to demographic and clinical data. The analysis was performed on the dynamic susceptibility contrast source images that are acquired in stroke patients for the purpose of generating perfusion-weighted images. We obtained a relative measure of BBB leakage comparing the signal change in regions of intact BBB with the signal change in regions with BBB disruption. Normal tissue was identified using an automated process that excludes regions of BBB disruption based on signal characteristics. We separately assessed BBB leakage in regions of hypoperfusion, representing the ischemic brain area, and regions with normal perfusion, representing the background brain status. Selection of the gadolinium injection time was done by visual inspection. All other aspects of the analysis were automated (see e-Methods at Neurology.org).

BBB disruption calculations were performed in these 2 regions of interest (ROIs) that were defined by time-to-peak (TTP) maps. The acute ROI, identifying the ischemic area in the affected hemisphere, was defined by region with a TTP delay of greater than 4 seconds, with all other regions falling into the nonacutely ischemic ROI. Although cerebral blood flow is different in gray vs white matter, TTP maps are relatively insensitive to these differences, and thus, when using a threshold of 4 seconds, the resulting ROI represents acute perfusion deficit of the involved vascular territory (figure 1). Thus the region remote from the acute ischemia comprises the rest of the brain (outside of the TTP lesion). We defined mean permeability derangement (MPD) as the mean value of all the voxels greater than the derangement threshold within the ROI. MPD is used to identify regions of focal high BBB derangement (figure 1). The BBB quantification was performed with an automated script in MATLAB software package, thus there was no user dependence or variability between repeated calculations. All BBB leakage calculations were submitted prior to unblinding.

Standard protocol approvals, registrations, and patient consents. Ethical approval was not required as the dataset was anonymized. The NIH Office of Human Subjects Research Protections determined that the BBB analysis, which was conducted at the NIH, did not require institutional review board approval.

Statistical analysis. We described general characteristics of the population with summary statistics, and used analysis of variance (ANOVA), Kruskal-Wallis, and Pearson χ^2 , as appropriate, to test differences among groups. For the purposes of the present study,

Figure 1 An example of blood-brain barrier (BBB) leakage detected with MRI



(A) Source image from the dynamic susceptibility contrast scan with the acute ischemic region of interest (ROI) shaded in blue. (B) BBB leakage map within the acute ROI. Regions of BBB leakage are overlain on the dynamic susceptibility contrast source image according to the color code in the legend with red representing the most severe areas of BBB disruption. (C) Corresponding diffusion-weighted image (DWI), which was not used in the analysis but is shown to demonstrate the pattern of elevated (red) BBB leakage in the region that is bright (acutely ischemic) on the DWI. (D) BBB leakage map for regions remote from the acute ischemia. (E) The corresponding fluid-attenuated inversion recovery (FLAIR) image and small vessel disease (SVD). The SVD composite score for this patient is 3. Note the pattern of increased BBB leakage at the junction between the white matter hyperintensities and the normal-appearing white matter. (F) FLAIR image from a follow-up MRI in which the previously administered gadolinium has leaked through the BBB into the CSF, causing a lack of CSF suppression.

we performed a normal logarithmic transformation of BBB leakage values to obtain normally distributed data. We therefore evaluated associations between single SVD features, SVD score, and BBB leakage with ANOVA. To investigate independent associations, we built multivariable linear regression models with SVD features and SVD score as explanatory variables and BBB leakage as dependent variable. For BBB leakage within the ischemic area, we adjusted the analysis for relevant confounders in acute stroke pathophysiology, such as age, sex, stroke severity, baseline glucose, and OTT. For BBB leakage in the nonischemic area, we adjusted the analysis for relevant confounders in SVD such as age, sex, hypertension, diabetes, and smoke exposure. In a further multivariable model, we adjusted the analysis for all the aforementioned variables in the same analysis. We considered a p value <0.05 statistically significant. Statistical analysis was carried out using SPSS for Windows (version 22.0; SPSS, IBM Corp., Armonk, NY).

RESULTS From a database of 285 patients, 219 (77%) had both clinical data and baseline MR scans of interest for the purposes of the present study. In 7 patients, MR assessment was not possible for technical reasons (poor scan quality or incomplete sequences). This left 212 (74% of the original dataset) patients with pretreatment MR scans available for the analysis.

Demographic and clinical characteristics of patients included in the study are listed in table 1. Mean age (\pm SD) was 69.5 ± 16.1 years; 102 (45%) patients were male. Median baseline NIHSS was 10; 75% of patients had a NIHSS >5 ; hypertension was the most frequent risk factor (71%).

Distribution of single SVD features is shown in figure e-1. Seventy-eight (37%) patients had evidence of severe white matter changes, 42 (20%) had 2 or more lacunes, 86 (41%) had brain atrophy graded as severe. The combined SVD score showed 95 (45%) patients with absence of SVD signs (score 0), 48 (23%) patients with mild SVD (score 1), 49 (23%) patients with moderate SVD (score 2), and 20 (9%) patients with severe SVD (score 3) burden. As expected, hypertension ($p = 0.001$) and atrial fibrillation ($p = 0.002$) prevalence increased with SVD burden.

Acute ischemic region and BBB leakage. Before IV rtPA administration, 175 (80%) patients showed some degree of BBB leakage within the ischemic area, with a mean (\pm SD) derangement of $3.02 (\pm 0.59)$. Univariate analysis showed that permeability increased with severity of white matter changes ($p = 0.006$),

Table 1 Baseline characteristics of study patients

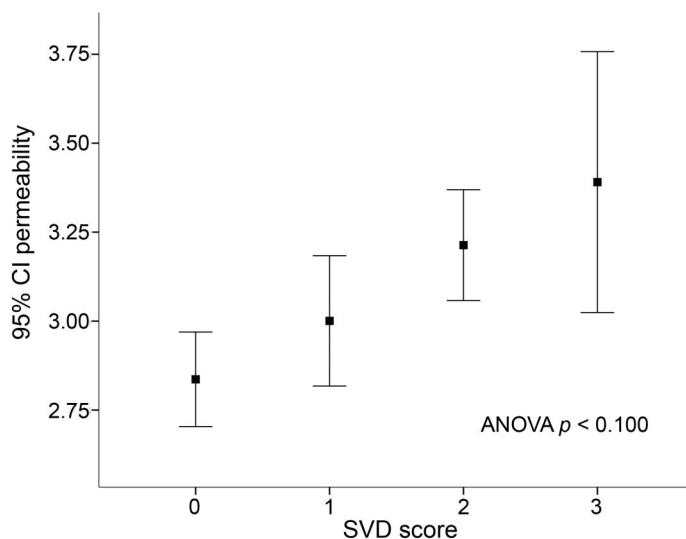
	Total population (n = 212)	SVD 0 (n = 95)	SVD 1 (n = 48)	SVD 2 (n = 49)	SVD 3 (n = 20)	p
Age, y	69.5 ± 16.1	59.9 ± 16.0	73.3 ± 12.4	80.9 ± 7.9	80.3 ± 7.3	<0.001
Sex, male	102 (45)	49 (52)	23 (48)	21 (43)	9 (45)	0.782
Weight, kg	78.8 ± 17.7	83.4 ± 17.6	78.2 ± 19.9	70.3 ± 12.7	74.6 ± 14.5	0.028
Hypertension	150 (71)	54 (57)	42 (88)	38 (78)	16 (80)	0.001
Diabetes	47 (22)	19 (20)	13 (27)	7 (14)	8 (40)	0.094
Hyperlipidemia	98 (46)	42 (44)	29 (60)	19 (39)	8 (40)	0.142
Atrial fibrillation	59 (28)	14 (15)	18 (38)	18 (37)	9 (45)	0.002
Smoking	57 (27)	25 (26)	10 (21)	15 (31)	7 (35)	0.588
Baseline NIHSS	10 (5-17)	8 (4-12)	10 (7-19)	13 (6-20)	11 (6-14)	0.019
OTT, min	165 (138-180)	157 (130-180)	170 (143-179)	161 (131-180)	177 (165-218)	0.051
Systolic BP, mm Hg	152.4 ± 25.8	149.8 ± 22.5	152.9 ± 28.8	160.4 ± 30.6	152.3 ± 25.7	0.450
Diastolic BP, mm Hg	79.9 ± 22.5	79.9 ± 13.2	86.0 ± 17.6	87.2 ± 14.6	81.4 ± 15.2	0.112
Glucose, mg/dL	133.3 ± 57.1	133.3 ± 57.1	129.3 ± 42.1	129.1 ± 41.7	158.8 ± 90.7	0.899
Ischemic region BBB leakage	3.02 ± 0.59	2.84 ± 0.57	3.00 ± 0.56	3.21 ± 0.49	3.39 ± 0.63	<0.001
Nonischemic region BBB leakage	2.87 ± 0.64	2.67 ± 0.65	2.97 ± 0.59	2.99 ± 0.57	3.33 ± 0.55	<0.001

Abbreviations: BBB = blood-brain barrier; BP = blood pressure; NIHSS = NIH Stroke Scale; OTT = onset-to-treatment time; SVD = small vessel disease. Data are n (%), mean ± SD, or median (interquartile range).

grade of brain atrophy ($p = 0.005$), and number of lacunes ($p = 0.008$) (figure e-2). The combined SVD score was strongly associated with BBB leakage (mean permeability 2.84 for SVD = 0; 3.00 for SVD = 1; 3.21 for SVD = 2; 3.39 for SVD = 3; $p < 0.001$; figure 2). Multivariable linear regression analysis among single SVD features showed that severe brain atrophy ($\beta = 0.20$; $p = 0.026$) and preexisting lacunar infarcts (per lacunar infarct increase, $\beta = 0.17$; $p = 0.042$) were associated with BBB leakage,

whereas both brain atrophy (as ordinal scale) and white matter changes were not. Compared to single SVD features and to its single components, the combined SVD score displayed a stronger association with BBB leakage ($\beta = 0.26$; $p = 0.007$, $\beta = 0.25$; $p = 0.014$ in 2 multivariable models; table 2).

Regions remote to the acute ischemia and BBB derangement. At baseline, 202 (95%) patients had evidence of BBB leakage in regions remote from the acute ischemia, with a mean (\pm SD) derangement of 2.87 (± 0.64). Similarly to the analysis in the acute ischemic region, univariate analysis showed that BBB leakage increased with grade of white matter changes ($p = 0.019$) and brain atrophy ($p < 0.001$), whereas number of lacunes were not associated with BBB leakage (figure e-3). The combined SVD score was associated with increased BBB leakage (mean permeability 2.67 for SVD = 0; 2.97 for SVD = 1; 2.99 for SVD = 2; 3.33 for SVD = 3; $p < 0.001$; figure 3). Multivariate linear regression showed that brain atrophy was independently associated with BBB leakage ($\beta = 0.25$; $p = 0.006$), whereas white matter changes and lacunes were not. However, the combined SVD score confirmed the association with BBB leakage in the 2 multivariable models ($\beta = 0.27$; $p = 0.003$, $\beta = 0.22$; $p = 0.013$; table 2).

Figure 2 Blood-brain barrier leakage (mean and 95% confidence interval [CI]) within the ischemic area across small vessel disease (SVD) score

ANOVA = analysis of variance.

Table 2 Linear regression analysis with blood-brain barrier (BBB) leakage as dependent variable

	BBB leakage in the ischemic area			BBB leakage in the nonischemic area		
	β	SE	<i>p</i>	β	SE	<i>p</i>
Brain atrophy (per point increase)	0.19	0.05	0.064	0.25	0.04	0.007
Severe brain atrophy	0.20	0.11	0.026	0.27	0.10	0.001
White matter changes (per point increase)	0.21	0.05	0.053	0.14	0.05	0.135
Severe white matter changes	0.17	0.12	0.087	0.12	0.11	0.149
Lacunae (per lacune increase)	0.17	0.04	0.042	0.07	0.04	0.347
Two or more lacunes	0.12	0.13	0.136	0.09	2.65	0.203
SVD score (per point increase) ^a	0.26	0.06	0.007	0.27	0.05	0.003
SVD score (per point increase) ^b	0.25	0.06	0.014	0.22	0.05	0.013

Abbreviations: NIHSS = NIH Stroke Scale; SVD = small vessel disease.

^aAnalysis for BBB leakage in the ischemic area adjusted for age, sex, onset-to-treatment time, baseline glucose, and baseline NIHSS; for BBB leakage in nonischemic area, adjusted for age, sex, hypertension, diabetes, and smoking exposure.

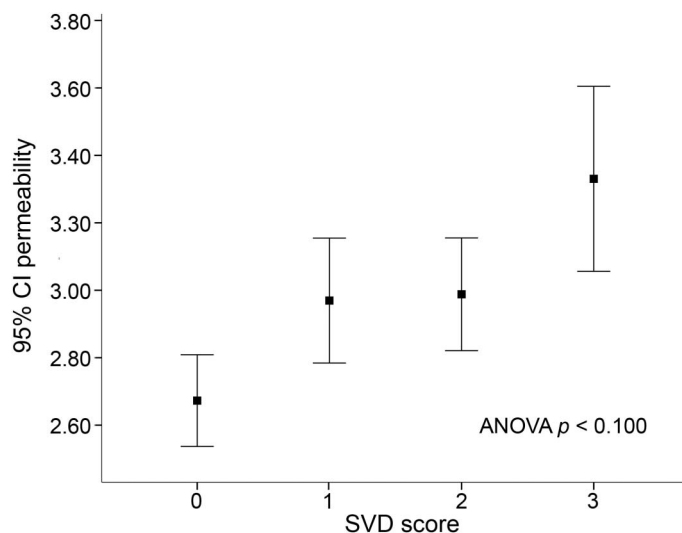
^bAnalysis adjusted for age, sex, onset-to-treatment time, baseline glucose, baseline NIHSS, hypertension, diabetes, and smoking exposure.

the latter had higher values than the former. Brain atrophy and lacunae were associated with increased BBB leakage; however, a summed SVD score was more strongly associated with increasing BBB leakage throughout the brain, suggesting that the use of a combined score accounting for the global SVD burden may provide more complete information with regard to BBB leakage.

Consistently with prior reports,^{16–19} we found that some degree of BBB leakage was a common event in acute stroke patients. Remarkably, almost all patients (95%) had some amount of BBB leakage remotely from the acute ischemia compared with 80% in regions with acute ischemia. Although

increasing amount of BBB derangement is likely pathologic, small amount of BBB leakage could be not related with disease, and this may explain the high frequency of patients with evidence of BBB disruption. Furthermore, BBB derangement increases with normal aging and in patients with SVD,¹⁷ and is thought to be one of the key pathologic changes of SVD.^{4,11,17} A recent consensus statement pointed out that increased BBB permeability may trigger SVD pathology,²⁰ and our findings seems to corroborate this hypothesis, showing almost all patients with BBB leakage despite around half of our population with imaging signs of SVD.

SVD has a various imaging phenotype and we found that single features of SVD had a substantially different contribution to BBB leakage between chronic and acute damage. Conversely to a previous study,¹⁰ we did not found any association between white matter changes and BBB leakage. However, this may support the hypothesis that BBB disruption precedes the development of white matter disease rather than being primarily associated with established white matter changes.^{11,20} Brain atrophy was strongly associated with BBB leakage. This finding is in keeping with a systematic review and meta-analysis, which showed a more pronounced BBB leakage in patients with vascular dementia compared to Alzheimer disease or controls.²¹ Similarly to previous studies,^{6,18} we found that lacunae were associated with an increase of BBB leakage, although the association was independent only within the ischemic area. More importantly, we showed that a combined score accounting for the global SVD burden performed better than single SVD score components with

Figure 3 Blood-brain barrier leakage (mean and 95% confidence interval [CI]) within the nonischemic area across small vessel disease (SVD) score

ANOVA = analysis of variance.

regards to BBB disruption. The independent associations of the SVD score with increased BBB leakage in both hemispheres suggested that a combined score may reliably act as a useful surrogate marker of SVD and convey an good overall view of the pathology and its grade and effect on the brain. Although we conducted a cross-sectional study and cannot draw any conclusion about causal relationship, we found a linear relation between increasing SVD burden and BBB leakage, alluding to a dose-response effect between the 2 features, thus reinforcing the association. Future larger studies may assess validity of our methodology of BBB disruption and SVD and explore their long-term relation.

We found a more pronounced increase of BBB leakage in the ischemic area compared to the area remote to brain ischemia before rtPA treatment. Evidence suggests that rtPA boosts BBB permeability within the ischemic area in acute stroke patients treated with IV thrombolysis with successful recanalization, and may therefore contribute to the so-called reperfusion injury.^{19,22,23} As a consequence, BBB disruption within the ischemic area after rtPA treatment has been proposed as an intermediate marker of patients at risk to develop hemorrhage.^{24,25} However, our results showed that various degree of BBB leakage is present also before rtPA administration, and therefore independent from either rtPA itself or recanalization process. This is in keeping with a recent study that showed that a mild BBB leakage before thrombolytic treatment is reversible after reperfusion, while severe BBB leakage is associated with irreversible BBB rupture and subsequent increasing risk of post-thrombolysis intracranial hemorrhage.²⁶ We demonstrated that preexisting characteristics of the brain, such as presence and grade of SVD, might modulate the amount of BBB permeability in the acutely ischemic area. Complex interactions among endothelial dysfunction,⁸ inflammation,¹⁶ and the integrity of the neurovascular unit²⁷ might contribute to the worsening of BBB function in patients with SVD. This may be clinically relevant for 2 main reasons. First, SVD is frequent in patients with acute ischemic stroke (we found around one-third of the study population with moderate to severe global burden of SVD), and second, BBB leakage has been associated with hemorrhagic transformation after acute stroke treatment. Future studies might investigate whether SVD and BBB disruption interact with hemorrhagic transformation or worse outcomes after rtPA and endovascular procedures.

Strengths of our study are the large sample size, the standardized assessment of SVD with largely

validated scales, and the blinded evaluation of both SVD and BBB leakage. However, we acknowledge several limits to our study. The analysis was performed on a de-identified dataset obtained from a public repository, thus the authors were not able to confirm the protocol used to enroll each patient. As a consequence, some selection bias interfering with the data is plausible. However, all the included patients were treated with IV rtPA after MRI, and experts should have excluded potential sources of bias (e.g., stroke mimics). The methodology we implemented for measuring BBB leakage utilized an MR sequence that can be routinely acquired as part of the evaluation of acute stroke patients within the time frame of recognized guidelines.²⁸ Although our permeability method is limited to reflect a relative rather than an absolute measurement of the transfer constant, this has the advantage that the measurement is normalized to the scan it is obtained from, minimizing the effect of scanner variability. Despite this advantage, it is important to point out that the scan measures in this study varied substantially in acquisition parameters and strength of the magnet and the scanner manufacturers. This variability undoubtedly added noise to the dataset and may have obscured important associations other than those identified. Although the methodology used in this study is relatively new, it has been validated in different datasets in patients with stroke^{29,30} and brain tumors.³¹ Again, we acknowledge that the SVD score we used needs validation and appropriate statistical modeling for implementation in clinical practice. However, we provided a proof-of-concept for the SVD score as a tool for quantification of global cerebral SVD. The same score previously proved validity from 2 different datasets in relation to clinical outcomes after acute stroke¹⁴ and white matter perfusion.¹⁵ Finally, we did not have any information about pathogenic mechanism of the index strokes and we did not retain data on ischemic lesion characteristics (e.g., size, location). However, the aim of the study was to give a picture of the link between SVD and BBB immediately before rtPA treatment in the acute scenario, irrespectively from stroke pathogenesis. Whether stroke subtype may influence BBB could be investigated in future studies.

This study expands our knowledge about the relationship between SVD and BBB in acute ischemic stroke, showing that BBB leakage is frequent before rtPA treatment and that increasing SVD burden is consistently associated with higher BBB leakage also in the acutely ischemic area. Our results suggest that SVD and BBB leakage are inter-related processes in both acutely ischemic and

nonischemic area. Further studies to investigate how SVD and BBB disruption interact with acute stroke therapy are warranted.

AUTHOR CONTRIBUTIONS

Francesco Arba: study concept, design, analysis of imaging data, draft manuscript. Richard Leigh: study design, analysis of imaging data, draft manuscript. Domenico Inzitari: study concept, analysis of imaging data, draft manuscript. Steven Warach: draft manuscript. Marie Luby: acquisition of data. Kennedy Lees: study design, draft manuscript.

STUDY FUNDING

Supported by the Department of Neurology, Dell Medical School, University of Texas at Austin.

DISCLOSURE

F. Arba received funding from Ente Cassa di Risparmio di Firenze (2010.06.03). R. Leigh is funded by the Intramural Research Program of the National Institute of Neurological Disorders and Stroke (NINDS) of the NIH, Bethesda, MD. D. Inzitari, S. Warach, M. Luby, and K. Lees report no disclosures relevant to the manuscript. Go to Neurology.org for full disclosures.

Received December 20, 2016. Accepted in final form September 6, 2017.

REFERENCES

1. Pantoni L. Cerebral small vessel disease: from pathogenesis and clinical characteristics to therapeutic challenges. *Lancet Neurol* 2010;9:689–701.
2. Wardlaw JM, Smith EE, Biessels GJ, et al; Standards For Reporting Vascular Changes On Neuroimaging (STRIVE v1). Neuroimaging standards for research into small vessel disease and its contribution to ageing and neurodegeneration. *Lancet Neurol* 2013;12:822–838.
3. Gouw AA, Seewann A, van der Flier WM, et al. Heterogeneity of small vessel disease: a systematic review of MRI and histopathology correlations. *J Neurol Neurosurg Psychiatry* 2011;82:126–135.
4. Staals J, Makin SD, Doubal FN, Dennis MS, Wardlaw JM. Stroke subtype, vascular risk factors, and total MRI brain small-vessel disease burden. *Neurology* 2014;83:1228–1234.
5. Staals J, Booth T, Morris Z, et al. Total MRI load of cerebral small vessel disease and cognitive ability in older people. *Neurobiol Aging* 2015;36:2806–2811.
6. Wardlaw JM, Sandercock PAG, Dennis MS, et al. Is breakdown of the blood-brain barrier responsible for lacunar stroke, leukoaraiosis, and dementia? *Stroke* 2003;34:806–812.
7. Ueno M, Tomimoto H, Akiguchi I, Wakita H, Sakamoto H. Blood-brain barrier disruption in white matter lesions in a rat model of chronic cerebral hypoperfusion. *J Cereb Blood Flow Metab* 2002;22:97–104.
8. Poggesi A, Pasi M, Pescini F, Pantoni L, Inzitari D. Circulating biologic markers of endothelial dysfunction in cerebral small vessel disease: a review. *J Cereb Blood Flow Metab* 2016;36:72–94.
9. Yang Y, Rosenberg GA. Blood-brain barrier breakdown in acute and chronic cerebrovascular disease. *Stroke* 2011;42:3323–3328.
10. Topkian R, Garrick TR, Howe FA, et al. Blood-brain barrier permeability is increased in normal-appearing white matter in patients with lacunar stroke and leukoaraiosis. *J Neurol Neurosurg Psychiatry* 2010;81:192–197.

11. Huisa BN, Caprihan A, Thompson J, Prestopnik J, Qualls CR, Rosenberg GA. Long-term blood-brain barrier permeability changes in Binswanger disease. *Stroke* 2015;46:2413–2418.
12. Van Swieten JC, Hijdra A, Koudstaal PJ, van Gijn J. Grading white matter lesions on CT and MRI: a simple scale. *J Neurol Neurosurg Psychiatry* 1990;53:1080–1083.
13. IST-3 Collaborative Group. Association between brain imaging signs, early and late outcomes, and response to intravenous alteplase after acute ischaemic stroke in the third International Stroke Trial (IST-3): secondary analysis of a randomised controlled trial. *Lancet Neurol* 2015;14:485–496.
14. Arba F, Inzitari D, Ali M, Warach SJ, Luby M, Lees KR; STIR/VISTA Imaging Collaboration. Small vessel disease and clinical outcomes after IV rt-PA treatment. *Acta Neurol Scand* 2017;136:72–77.
15. Arba F, Mair G, Carpenter T, et al; IST-3 Trial Collaborators. Cerebral white matter hypoperfusion increases with small-vessel disease burden: data from the Third International Stroke Trial. *J Stroke Cerebrovasc Dis* 2017;26:1506–1513.
16. Rosenberg GA. Neurological diseases in relation to the blood brain barrier. *J Cereb Blood Flow Metab* 2012;32:1139–1151.
17. Wardlaw JM, Smith C, Dichgans M. Mechanisms of sporadic cerebral small vessel disease: insights from neuroimaging. *Lancet Neurol* 2013;12:483–497.
18. Wardlaw JM, Makin S, Valdés Hernández MC, et al. Blood-brain barrier failure as a core mechanism in cerebral small vessel disease and dementia: evidence from a cohort study. *Alzheimer's Dement* 2017;13:634–643.
19. Kaur J, Tuor UI, Zhao Z, Barber PA. Quantitative MRI reveals the elderly ischemic brain is susceptible to increased early blood-brain barrier permeability following tissue plasminogen activator related to claudin 5 and occludin disassembly. *J Cereb Blood Flow Metab* 2011;31:1874–1885.
20. Rosenberg GA, Wallin A, Wardlaw JM, et al. Consensus statement for diagnosis of subcortical small vessel disease. *J Cereb Blood Flow Metab* 2016;36:6–25.
21. Farrall AJ, Wardlaw JM. Blood-brain barrier: ageing and microvascular disease—systematic review and meta-analysis. *Neurobiol Aging* 2009;30:337–352.
22. Kassner A, Roberts TP, Moran B, Silver FL, Mikulis DJ. Recombinant tissue plasminogen activator increases blood-brain barrier disruption in acute ischemic stroke: an MR imaging permeability study. *AJNR Am J Neuroradiol* 2009;30:1864–1869.
23. Kidwell CS, Latour L, Saver JL, et al. Thrombolytic toxicity: blood brain barrier disruption in human ischemic stroke. *Cerebrovasc Dis* 2008;25:338–343.
24. Warach S, Latour LL. Evidence of reperfusion injury, exacerbated by thrombolytic therapy, in human focal brain ischemia using a novel imaging marker of early blood-brain barrier disruption. *Stroke* 2004;35:2659–2661.
25. Latour LL, Kang DW, Ezzeddine MA, Chalela JA, Warach S. Early blood-brain barrier disruption in human focal brain ischemia. *Ann Neurol* 2004;56:468–477.
26. Simpkins AN, Dias C, Leigh R; National Institutes of Health Natural History of Stroke Investigators.

- Identification of reversible disruption of the human blood-brain barrier following acute ischemia. *Stroke* 2016;47:2405–2408.
27. Del Zoppo GJ. Aging and the neurovascular unit. *NY Ann Acad Sci* 2012;1268:127–133.
 28. Shah S, Luby M, Poole K, et al. Screening with MRI for accurate and rapid stroke treatment: SMART. *Neurology* 2015;84:2438–2444.
 29. Leigh R, Jen SS, Hillis AE, et al. Pretreatment blood-brain barrier damage and posttreatment intracranial hemorrhage in patients receiving intravenous tissue-type plasminogen activator. *Stroke* 2014;45:2030–2035.
 30. Leigh R, Christensen S, Campbell BC, et al; DEFUSE 2 Investigators. Pretreatment blood-brain barrier disruption and post-endovascular intracranial hemorrhage. *Neurology* 2016;19:263–269.
 31. Kluge A, Lukas M, Toth V, Pyka T, Zimmer C, Preibisch C. Analysis of three leakage correction methods for DSC-based measurement of relative cerebral blood volume with respect to heterogeneity in human gliomas. *Magn Reson Imaging* 2016;34:410–421.



Neurology® Online CME Program

Earn CME while reading *Neurology*. This program is available only to online *Neurology* subscribers. Simply read the articles marked CME, go to Neurology.org, and click on CME. This will provide all of the information necessary to get started. The American Academy of Neurology (AAN) is accredited by the Accreditation Council for Continuing Medical Education (ACCME) to sponsor continuing medical education for physicians. *Neurology* is planned and produced in accordance with the ACCME Essentials. For more information, contact AAN Member Services at 800-879-1960.

Applications Now Open for 2018 AAN Diversity Leadership Program

The American Academy of Neurology is committed to building leadership reflective of its diverse member and patient demographics. The prestigious eight-month AAN Diversity Leadership Program is designed to support and foster underrepresented AAN members to become future Academy leaders. Visit AAN.com/view/DiversityLeadershipProgram for eligibility requirements and to apply by the December 18, 2017, deadline.

Four Days That Will Change Your Life

The American Academy of Neurology is accepting applications from AAN members for the 2018 Palatucci Advocacy Leadership Forum, being held from May 17–20, 2018. The application deadline is December 11, 2017.

The AAN established this award-winning leadership program in 2003 to provide effective advocacy training unavailable elsewhere, because neurologists are the best advocates for our profession and our patients. The skills you develop during this unforgettable weekend can enhance your career and revitalize your passion for neurology. Learn more and apply at AAN.com/view/PALF.

Neurology[®]

Blood–brain barrier leakage increases with small vessel disease in acute ischemic stroke

Francesco Arba, Richard Leigh, Domenico Inzitari, et al.

Neurology 2017;89:2143-2150 Published Online before print October 25, 2017

DOI 10.1212/WNL.0000000000004677

This information is current as of October 25, 2017

Updated Information & Services	including high resolution figures, can be found at: http://n.neurology.org/content/89/21/2143.full
Supplementary Material	Supplementary material can be found at: http://n.neurology.org/content/suppl/2017/10/25/WNL.0000000000004677.DC2 http://n.neurology.org/content/suppl/2017/10/25/WNL.0000000000004677.DC1
References	This article cites 31 articles, 11 of which you can access for free at: http://n.neurology.org/content/89/21/2143.full#ref-list-1
Citations	This article has been cited by 1 HighWire-hosted articles: http://n.neurology.org/content/89/21/2143.full##otherarticles
Subspecialty Collections	This article, along with others on similar topics, appears in the following collection(s): All Cerebrovascular disease/Stroke http://n.neurology.org/cgi/collection/all_cerebrovascular_disease_stroke MRI http://n.neurology.org/cgi/collection/mri
Permissions & Licensing	Information about reproducing this article in parts (figures, tables) or in its entirety can be found online at: http://www.neurology.org/about/about_the_journal#permissions
Reprints	Information about ordering reprints can be found online: http://n.neurology.org/subscribers/advertise

Neurology® is the official journal of the American Academy of Neurology. Published continuously since 1951, it is now a weekly with 48 issues per year. Copyright © 2017 American Academy of Neurology. All rights reserved. Print ISSN: 0028-3878. Online ISSN: 1526-632X.

