

# Biochemical Screening for Nonadherence

OPEN

## Biochemical Screening for Nonadherence Is Associated With Blood Pressure Reduction and Improvement in Adherence

Pankaj Gupta, Prashanth Patel, Branislav Štrauch, Florence Y. Lai, Artur Akbarov, Gaurav S. Gulsin, Alison Beech, Věra Marešová, Peter S. Topham, Adrian Stanley, Herbert Thurston, Paul R. Smith, Robert Horne, Jiří Widimský, Bernard Keavney, Anthony Heagerty, Nilesh J. Samani, Bryan Williams, Maciej Tomaszewski

**Abstract**—We hypothesized that screening for nonadherence to antihypertensive treatment using liquid chromatography–tandem mass spectrometry–based biochemical analysis of urine/serum has therapeutic applications in nonadherent hypertensive patients. A retrospective analysis of hypertensive patients attending specialist tertiary care centers was conducted in 2 European countries (United Kingdom and Czech Republic). Nonadherence to antihypertensive treatment was diagnosed using biochemical analysis of urine (United Kingdom) or serum (Czech Republic). These results were subsequently discussed with each patient, and data on follow-up clinic blood pressure (BP) measurements were collected from clinical files. Of 238 UK patients who underwent biochemical urine analysis, 73 were nonadherent to antihypertensive treatment. Their initial urinary adherence ratio (the ratio of detected to prescribed antihypertensive medications) increased from 0.33 (0–0.67) to 1 (0.67–1) between the first and the last clinic appointments. The observed increase in the urinary adherence ratio in initially nonadherent UK patients was associated with the improved BP control; by the last clinic appointment, systolic and diastolic BPs were  $\approx$ 19.5 and 7.5 mmHg lower than at baseline ( $P=0.001$  and 0.009, respectively). These findings were further corroborated in 93 nonadherent hypertensive patients from Czech Republic—their average systolic and diastolic BPs dropped by  $\approx$ 32.6 and 17.4 mmHg, respectively ( $P<0.001$ ), on appointments after the biochemical analysis. Our data show that nonadherent hypertensive patients respond to liquid chromatography–tandem mass spectrometry–based biochemical analysis with improved adherence and significant BP drop. Such repeated biochemical analyses should be considered as a therapeutic approach in nonadherent hypertensive patients. (*Hypertension*. 2017;70:1042-1048. DOI: 10.1161/HYPERTENSIONAHA.117.09631.)

**Key Words:** adherence ■ antihypertensive agents ■ blood pressure ■ chromatography, liquid ■ hypertension

Hypertension has become the single leading cause of global disease burden ahead of smoking and alcohol use.<sup>1</sup> All cardiovascular complications of hypertension are related to poor blood pressure (BP) control.<sup>2–4</sup> Despite the widespread availability of effective antihypertensive therapies, BP control is achieved only in approximately half of the Western populations.<sup>5,6</sup> One of the potential explanations for this apparent paradox is the pandemic of nonadherence to antihypertensive medications.<sup>7–10</sup> Recent studies show that 25% to 65% hypertensive patients do not take their BP-lowering medications as prescribed.<sup>8,10–18</sup> These figures are extremely robust because they come from studies that used a direct and objective method

of screening for therapeutic nonadherence.<sup>8,10–18</sup> High performance liquid chromatography–tandem mass spectrometry (LC-MS/MS) provides a highly sensitive and specific detection of all commonly prescribed BP-lowering medications (or their metabolites) in urine/serum samples. Because of its simplicity, relatively low cost, and objective nature of analysis, it is a useful diagnostic test in patients with apparent lack of BP response to antihypertensive treatment.<sup>17</sup>

Here, we examined the potential therapeutic applications of biochemical screening for the presence of antihypertensive medications in bodily fluids. We demonstrate that nonadherent patients who undergo LC-MS/MS–based analyses exhibit an

Received May 1, 2017; first decision May 10, 2017; revision accepted July 17, 2017.

From the Department of Metabolic Medicine and Chemical Pathology, University Hospitals of Leicester NHS Trust, United Kingdom (P.G., P.P., G.S.G., P.R.S.); Department of Cardiovascular Sciences, University of Leicester, United Kingdom (P.G., P.P., F.Y.L., G.S.G., N.J.S.); National Institute for Health Research Leicester Cardiovascular Biomedical Research Unit, United Kingdom (P.G., P.P., F.Y.L., N.J.S.); Division of Cardiovascular Sciences, Faculty of Biology, Medicine, and Health, University of Manchester, United Kingdom (P.G., A.A., B.K., A.H., M.T.); 3rd Department of Medicine, Department of Endocrinology and Metabolism, Hypertension Centre (B.S., J.W.) and Institute of Forensic Medicine and Toxicology (V.M.), General University Hospital, Charles University, Prague, Czech Republic; University of Leicester, United Kingdom (A.B.); University Hospitals of Leicester NHS Trust, United Kingdom (P.S.T., A.S., H.T.); Department of Health Psychology, University College of London, United Kingdom (R.H.); Division of Medicine, Central Manchester NHS Foundation Trust, Manchester Academic Health Science Centre, United Kingdom (B.K., A.H., M.T.); Institute of Cardiovascular Science, University College London, United Kingdom (B.W.); and National Institute for Health Research, University College London Hospitals Biomedical Research Centre, United Kingdom (B.W.).

Correspondence to Maciej Tomaszewski, Division of Cardiovascular Sciences, Faculty of Biology, Medicine, and Health, University of Manchester, 5th Floor, AV Hill Bldg, Manchester, M13 9NT, United Kingdom. E-mail [maciej.tomaszewski@manchester.ac.uk](mailto:maciej.tomaszewski@manchester.ac.uk)

© 2017 The Authors. *Hypertension* is published on behalf of the American Heart Association, Inc., by Wolters Kluwer Health, Inc. This is an open access article under the terms of the [Creative Commons Attribution License](http://creativecommons.org/licenses/by/4.0/), which permits use, distribution, and reproduction in any medium, provided that the original work is properly cited.

*Hypertension* is available at <http://hyper.ahajournals.org>

DOI: 10.1161/HYPERTENSIONAHA.117.09631

improvement in adherence and a clinically meaningful BP drop. We further show that a majority of initially nonadherent patients can successfully improve their adherence through repeated LC-MS/MS–based analysis and achieve BP targets similar to those who have been persistently adherent to treatment.

## Methods

### Data Collection and Biochemistry

#### UK Patients

We collected retrospective data from patients attending University Hospitals of Leicester NHS Trust Blood Pressure Clinic (European Society of Hypertension Centre of Excellence) between 2011 and 2014. Included in this analysis were hypertensive patients who had at least 1 biochemical screening for nonadherence to antihypertensive treatment (by LC-MS/MS of urine) during this period. Referred for the biochemical screening for nonadherence in the UK center were patients suspected to deviate from the prescribed antihypertensive therapy by their managing doctor as reported before.<sup>19</sup> None of the patients asked to provide a urine sample for LC-MS/MS–based analysis refused to undertake the test. Apart from the results of LC-MS/MS–based urine analyses, we collected available basic demographic and clinical characteristics, information on prescribed antihypertensive medications, and their changes between the first (baseline) and the last clinical appointments (as defined by the timing of LC-MS/MS–based urine analysis). BP was recorded using a validated semiautomatic device (A&D Digital BP Monitor UA-767PC, A&D Instruments, Abingdon, United Kingdom). Measurements were made as per the National Institute of Health and Care Excellence Guideline 127.<sup>20</sup> The 24-hour ambulatory BP monitoring was conducted using Spacelabs 90217A-1 monitors (Space Labs Healthcare, Snoqualmie, Washington) in line with the National Institute of Health and Care Excellence guidelines.<sup>20</sup>

On the day of their clinic appointment, patients were asked to provide a urine sample for the analysis of their adherence to antihypertensive medications.<sup>10</sup> Briefly, the LC-MS/MS–based screening detects 40 of the most commonly prescribed antihypertensive medications.<sup>10</sup> Samples were collected in a standard container, stored at  $-80^{\circ}\text{C}$  until analysis, and examined using the Agilent Technologies 1290 High Pressure Liquid Chromatograph interfaced with an Agilent Technologies 6460 Triple Quad Mass Spectrometer (Santa Clara, CA) fitted with a jet stream electrospray source. The detection was based on the presence of the specific precursor ion to product ion transition (at least 2 for each analyte) and retention times.<sup>10</sup>

Patients whose baseline urine analysis by LC-MS/MS did not detect at least one of the prescribed antihypertensive medications were classified as initially nonadherent. Those whose baseline urine analysis detected all prescribed antihypertensive medications were classified as initially adherent. Patients who were initially nonadherent as defined above but whose subsequent urine analysis detected all prescribed medications were defined as converters. Patients who were initially adherent as defined above and whose subsequent urine analysis continued to show presence of all prescribed medications were classified as persistently adherent.

#### Czech Republic Patients

All hypertensive patients referred with suboptimal BP control to the Hypertension Unit at the 3rd Department of Medicine, General University Hospital, in Prague between 2010 and 2016 were included in the initial retrospective analysis of clinical notes. Included in this project were hypertensive patients diagnosed with nonadherence to antihypertensive treatment by LC-MS/MS–based analysis and at least 2 clinic appointments with recorded clinic BP values. The Czech patients were referred for LC-MS/MS–based analysis if their treating clinician found their BP control was suboptimal on the existing antihypertensive treatment.<sup>20</sup> None of the patients asked to provide a blood sample for LC-MS/MS–based analysis refused. Similar to the UK cohort, information on demographic data, prescribed antihypertensives, and clinic BP values recorded at baseline and on follow-up appointments was retrieved retrospectively from the clinical files or

electronic systems. The follow-up appointments were conducted either in Hypertension Unit at the 3rd Department of Medicine, General University Hospital, in Prague or in the primary care. BP measurements were taken using validated oscillometric automated devices in line with guidelines of the Czech Society of Hypertension.<sup>21</sup>

Serum samples were collected on the initial visit in the outpatient clinic of the Hypertension Unit. Analysis of the serum concentrations of antihypertensive medications was performed as described before.<sup>22–25</sup> Serum samples were collected as a part of routine service and sent to the Toxicology laboratory of the Institute of Forensic Medicine and Toxicology. The samples were aliquoted and stored at  $-80^{\circ}\text{C}$  until analysis. The LC-MS/MS was performed using Agilent Technologies 1200 Rapid Resolution Liquid Chromatography consisting of a degasser, binary pump, autosampler, and thermostatted column compartment. The mass spectrometry analysis was performed using an MDS Sciex 3200 Q142 trap triple quadrupole/linear ion trap mass spectrometer with a TurboIonSpray source.

Patients whose baseline serum analysis by LC-MS/MS did not detect at least one of the prescribed antihypertensive medications were classified as nonadherent.

The studies comply with the Declaration of Helsinki. In the UK cohort, patients were informed about the purpose of urine collection on the day of their clinical appointment. The UK patients gave a verbal consent for the biochemical screening for nonadherence, and the project was approved by University Hospitals of Leicester (audit registration number: 5944) and ratified by the local ethics committee (reference no: 17/EM/0027). Czech Republic patients provided a written consent for collection of their data in anonymized form, and the project received an institutional approval (VFN 004707/2017). The results of all biochemical analyses were sent to the appropriate clinician who informed the patients of the findings and discussed them during their clinic appointment. The form and timing of the discussion were left to the discretion of the responsible clinician.

### Statistical Analysis

Descriptive statistics are presented as counts (percentages), means (SDs), or medians (interquartile ranges). Crude comparisons of basic demographic and clinical characteristics between 2 groups (ie, initially adherent versus nonadherent patients) were conducted using Fisher exact test or *t* test as appropriate. The groups were also compared in terms of the number of prescribed and detected BP-lowering drugs, adherence ratio, and BP over follow-up appointments using mixed-effects regression models to account for the correlated nature of observations across the appointments. Continuous variables, such as BP, were log transformed, the adherence proportion data were arcsine transformed, and both analyzed using linear mixed-effects models. Variables based on counts, such as the differences in the number of prescribed and detected antihypertensive medications, were examined using Poisson mixed-effects models. Nondemographic comparisons were adjusted for age, sex, ethnicity (where appropriate), and the number of prescribed antihypertensive medications. The  $R^2$  of mixed-models was evaluated using Nakagawa and Schielzeth's approach.<sup>26</sup> All analyses were conducted using R<sup>27</sup> with the use of the following R packages: lme4,<sup>28</sup> data.table,<sup>29</sup> and ggplot2.<sup>30</sup>

## Results

### General Clinical Characteristics

Of 238 UK patients included in this analysis, 165 and 73 were classified as initially adherent and nonadherent (respectively) based on the results of their first LC-MS/MS urine test. The basic demographic characteristics, as well as the percentage of attended follow-up appointments, were similar in both groups (Table 1). The clinical characteristics of 93 Czech patients whose nonadherence was confirmed by LC-MS/MS–based analysis of serum are also shown in Table 1. None of the UK or Czech patients with the initial biochemical confirmation of nonadherence to antihypertensive treatment admitted being nonadherent before the LC-MS/MS–based analysis.

**Table 1. Demographic and Clinical Characteristics of Patients**

Characteristic	United Kingdom				Czech Republic
	All	Initially Adherent	Initially Nonadherent	<i>P</i> Value	Initially Nonadherent
n	238	165	73	...	93
Age, y	54.3 (16.3)	53.3 (17.8)	56.6 (12.1)	0.094	51.4 (10.5)
Female sex (%)	128 (53.8)	84 (50.9)	44 (60.3)	0.206	53 (57)
White ethnicity (%)	151 (63.4)	113 (68.5)	38 (52.1)	0.019	93 (100)
Attendance at the second clinic appointment (%)	214 (89.9)	149 (90.3)	65 (89.0)	0.817	...
Attendance at the last clinic appointment (%)	166 (69.7)	112 (67.9)	54 (74.0)	0.364	93 (100)
Time between first and second appointments, mo	4.5 (3.1)	4.5 (3.3)	4.5 (2.7)	0.977	...
Time between second and last appointments, mo	10.9 (7.0)	9.8 (6.3)	13.4 (7.8)	0.003	...

Data are means (SDs) or counts (percentages). *P* value indicates level of statistical significance for the difference between initially adherent and nonadherent patients from United Kingdom.

### Initially Nonadherent Hypertensive Patients Show Steeper Reduction in BP on Follow-Up Appointments Than Those Who Are Initially Adherent to Antihypertensive Therapy

As expected, on the first clinic appointment, initially nonadherent patients had higher BP values than those who adhered to antihypertensive therapy (Table 2). However, there were no statistically

significant differences in either clinic systolic BP (SBP) or diastolic BP (DBP) between both groups on the last clinic appointment (Table 2). This pattern of changes was replicated for both mean SBP and DBP on 24-hour ambulatory BP monitoring (Table 2). The median number of prescribed antihypertensive medications increased from 2 to 3 in the initially adherent group but remained constant at 4 in the initially nonadherent patients

**Table 2. Blood Pressure Values on Follow-Up Appointments: Comparison of Initially Adherent and Initially Nonadherent Patients**

Clinic Appointment	Initially Adherent		Initially Nonadherent		<i>P</i> Value
	n	Clinic SBP, mm Hg	n	Clinic SBP, mm Hg	
First	152 [13]	154.5 (21.7)	69 [4]	167.8 (21.5)	<0.001
Second	126 [23]	143.8 (19.7)	61 [4]	158.9 (27.8)	<0.001
Last	90 [22]	140.5 (17.9)	50 [4]	147.1 (23.1)	0.247
		Clinic DBP, mm Hg		Clinic DBP, mm Hg	
First	152 [13]	88.7 (14.0)	69 [4]	94.8 (12.8)	<0.001
Second	126 [23]	86.0 (14.9)	61 [4]	89.6 (17.7)	0.012
Last	90 [22]	82.9 (13.8)	50 [4]	84.4 (14.6)	0.187
		24-h mean SBP, mm Hg		24-h mean SBP, mm Hg	
First	109 [56]	147.5 (14.9)	37 [36]	156.8 (18.9)	0.037
Second	26 [123]	151.2 (24.1)	11 [54]	156.1 (22.3)	0.667
Last	15 [97]	136.9 (14.8)	7 [47]	149.3 (14.6)	0.198
		24-h mean DBP, mm Hg		24-h mean DBP, mm Hg	
First	109 [56]	86.4 (12.2)	37 [36]	90.3 (12.3)	0.012
Second	26 [123]	84.2 (13.5)	11 [54]	86.8 (12.6)	0.130
Last	15 [97]	78.1 (14.2)	7 [47]	82.1 (8.6)	0.134
		Medications		Medications	
First	165 [0]	2 (1–4)	73 [0]	4 (3–5)	<0.001
Second	148 [1]	3 (2–4)	65 [0]	4 (3–5)	0.003
Last	111 [1]	3 (2–4)	54 [0]	4 (3–5)	0.042

Data are counts (percentages), medians (interquartile ranges), or means (SDs). n indicates number of patients with available data [number of patients with missing data]; medications, number of prescribed antihypertensive medications; *P* value, level of statistical significance for the difference between initially adherent and initially nonadherent patients adjusted for age, sex, and ethnicity; blood pressure comparisons were also adjusted for the number of prescribed medications. DBP indicates diastolic blood pressure; and SBP, systolic blood pressure.

(Table 2). Further sensitivity analyses restricted to those with suboptimal BP control on treatment with at least 3 antihypertensive medications (including a diuretic)<sup>31</sup> confirmed that the differences in BP between initially nonadherent and adherent patients followed the pattern of changes observed in the analysis of the entire cohort of hypertensives (data not shown).

### LC-MS/MS–Based Analysis Is Associated With Better Adherence to Antihypertensive Treatment and Improved BP Control in Initially Nonadherent Patients

We further examined the patterns of changes in adherence to antihypertensive therapy and BP exclusively in UK patients who were nonadherent on their first clinic appointment. Of 73 initially nonadherent patients, 30 had repeated LC-MS/MS–based urine analysis coinciding with clinic BP measurements. There were no statistically significant differences in their basic clinical characteristics when compared with the 43 nonadherent patients who did not have repeated urine analysis (data not shown). The median adherence ratio increased between their first and last appointments (Table 3). Although the median number of prescribed medications remained constant ( $P=0.906$ ), the median number of drugs detected in urine by LC-MS/MS increased from 1 to 3 ( $P<0.001$ ; Table 3). By the last appointment, 80% of the 30 initially nonadherent patients with follow-up LC-MS/MS–based analysis improved their urinary adherence ratio and 53.3% became fully adherent (converters). We also recorded 19.5- and 7.5-mmHg reduction in SBP and DBP (respectively) between the patients' first and last appointments (Table 3).

An additional analysis conducted in an independent sample of 93 nonadherent hypertensive patients from Czech Republic revealed even more significant reduction in BP—average SBP and DBP dropped by 32.6 and 17.4 mmHg, respectively ( $P<0.001$ ) on appointments after the initial LC-MS/MS–based serum analysis. This BP reduction occurred without statistically significant changes in the average number of prescribed antihypertensive medications (Table 3).

### Initially Nonadherent Patients Who Become Converters Reach BP Similar to That of Persistently Adherent Patients

Nineteen initially adherent patients had repeated LC-MS/MS–based urine analysis and remained adherent to treatment by

the final clinic appointment (persistently adherent patients). Their clinical characteristics are shown in Table 4. Although the baseline clinic BP was numerically lower in persistently adherent patients than in converters, by the last appointment, both clinic SBP and DBP became statistically comparable between both groups of patients (Table 4).

### Numeric Change in the Adherence Ratio Shows a Correlation With the Drop in BP in Initially Nonadherent Patients Who Underwent Repeated Urine Analysis and BP Measurements

We detected a significant association between the increase in the adherence ratio (on LC-MS/MS–based urine analysis) and drop in BP (on clinic measurements) in 29 UK patients who underwent repeated screening for nonadherence and had BP measurements taken on the same visits ( $R^2=0.25$ ,  $P=0.002$  for SBP and  $R^2=0.21$ ,  $P=0.005$  for DBP). An average increase in urinary adherence ratio of 0.5 correlated with an  $\approx 16$ -mmHg drop in SBP and 9-mmHg drop in DBP (Figure). After adjustment for age, sex, ethnicity, and the number of prescribed drugs, the association between the increase in the urinary adherence ratio and drop in BP remained significant ( $P=0.010$  for SBP and  $P=0.006$  for DBP).

## Discussion

Our study provides several important insights into the potential therapeutic use of biochemical screening for nonadherence to antihypertensive treatment. First, we demonstrate that nonadherent hypertensive patients who underwent LC-MS/MS–based analysis of urine/serum and were informed of the results exhibit a significant BP drop on subsequent clinical appointments. Second, we show that repeated LC-MS/MS–based analyses have the potential to normalize adherence to antihypertensive treatment in a majority of initially nonadherent patients. Third, our data suggest that the observed improvement in BP on follow-up appointments can be explained by an improvement in urinary adherence ratio. Finally, we reveal that those who fully convert from initial nonadherence to full adherence may achieve BP levels similar to those who have been persistently adherent to treatment.

We and others previously demonstrated the diagnostic use of LC-MS/MS–based screening in detecting nonadherence to antihypertensive treatment.<sup>8,10–12,14–18</sup> It also emerges

**Table 3. Changes in Clinic Blood Pressure and Adherence to Antihypertensive Treatment in Initially Nonadherent Patients**

Characteristics	United Kingdom				Czech Republic		
	First Appointment	Second Appointment	Last Appointment	<i>P</i> Value	First Appointment	Last Appointment	<i>P</i> Value
n	73	23	17	...	93	93	...
Adherence ratio	0.33 (0–0.67)	0.60 (0.13–1)	1 (0.67–1)	<0.001	0.17 (0–0.50)	...	...
No. of drugs prescribed	4 (3–5)	4 (4–5)	4 (3–5)	0.906	4 (3–4)	4 (3–5)	0.436
No. of drugs detected	1 (0–2)	3 (0.5–4)	3 (2–4)	<0.001	1 (0–2)	...	...
SBP, mm Hg	167.8 (21.5)	162.7 (28.8)	148.3 (24.5)	0.001	183.6 (25.8)	151.0 (27.8)	<0.001
DBP, mm Hg	94.8 (12.8)	93.8 (20.0)	87.3 (13.4)	0.009	108.3 (14.9)	90.9 (14.6)	<0.001

Data are counts, medians (interquartile ranges) or means (SDs). Adherence ratio, the urinary ratio of detected to prescribed antihypertensive medications; *P* value, level of statistical significance for comparison of the first and last appointments adjusted for age and sex; blood pressure comparisons were also adjusted for the number of prescribed medications. DBP indicates diastolic blood pressure; and SBP, systolic blood pressure.

**Table 4. Clinical Characteristics, Adherence to Antihypertensive Treatment, and Clinic Blood Pressure in Converters and Persistently Adherent Patients**

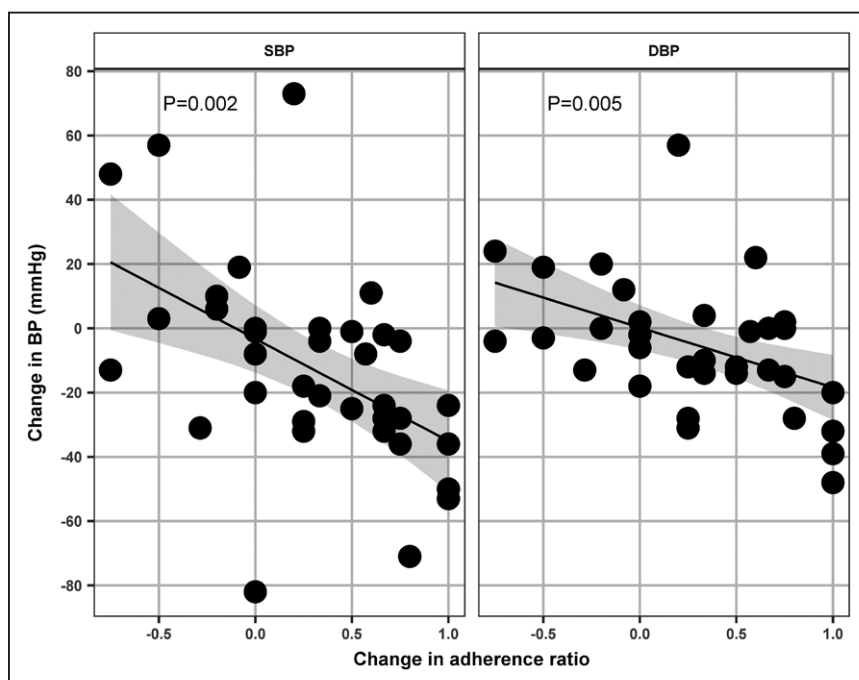
Characteristic	Clinic Appointment	Converters	Persistently Adherent	P Value
n	...	16	19	...
Age, y	...	54.6 (13.7)	64.4 (15.3)	0.052
Female sex (%)	...	12 (75)	11 (58)	0.476
White ethnicity (%)	...	9 (56)	13 (68)	0.503
No. of drugs prescribed	First	4 (3.5–5)	4 (2–4.5)	0.066
	Second	4 (3.5–5)	3 (2–4)	0.069
	Last	4 (3.5–5)	3.5 (3–4)	0.178
SBP, mm Hg	First	174.4 (17.8)	157.8 (25.2)	0.004
	Second	156.6 (27.3)	157.2 (24.4)	0.800
	Last	138.4 (19.0)	148.6 (17.3)	0.342
DBP, mm Hg	First	96.1 (17.4)	81.8 (16.7)	0.074
	Second	90.9 (22.3)	85.8 (17.7)	0.906
	Last	84.2 (16.4)	86.1 (11.2)	0.143

Data are counts (percentages), medians (interquartile ranges), or means (SDs). Converters, initially nonadherent patients who by their last clinic appointment converted to fully adherent; persistently adherent, initially adherent patients who remained fully adherent on repeated testing; P value, level of statistical significance for comparison between converters and persistent adherers; comparisons at each appointment were adjusted for age, sex, and ethnicity; blood pressure comparisons were also adjusted for the number of prescribed drugs. DBP indicates diastolic blood pressure; and SBP, systolic blood pressure.

that biochemical screening for nonadherence to BP-lowering therapy may be helpful in treatment of hypertension. Indeed, 16 hypertensive patients with biochemically confirmed nonadherence showed 46- and 14-mmHg drop in clinic SBP and DBP, respectively, on follow-up in a pilot US study.<sup>13</sup> We extend these observations to larger samples of patients

recruited in 2 European countries. Most importantly, our study demonstrates that a reduction in BP can be explained (at least in part) through improved therapeutic adherence (as measured by the average increase in detected BP-lowering medications and the absolute increase in urinary adherence ratio).

We also show for the first time that as the directly measured adherence ratio improves over the follow-up appointments, the number of initially nonadherent patients drops, and adherence normalizes in 53.3% of initially nonadherent individuals. This means that a majority of initially nonadherent patients may convert into adherence on repeated LC-MS/MS-based analysis. The mechanisms responsible for BP reduction after LC-MS/MS-based analyses remain unclear. We anticipate that discussing the results of LC-MS/MS-based analysis break down key barriers to adherence on both the clinician’s and the patient’s side.<sup>32,33</sup> In our study, the form and content of this discussion were left at the discretion of the managing physician. At University Hospitals of Leicester BP clinic, this structured discussion aims to identify and eliminate the lead reason(s) for nonadherence to antihypertensive treatment. The conceptual principles of this intervention are rooted in the apparent BP-lowering efficacy of therapeutic drug monitoring<sup>13</sup> and follow the strategy proposed by National Institute of Clinical Excellence (National Institute for Health and Care Excellence) guidelines on adherence to medicines.<sup>34</sup> The discussion focuses primarily on (1) polypharmacy, (2) practical difficulties (ie, forgetting, managing treatment costs, etc.) that through limitations in capability and resources affect ability to adhere, and (3) perceptions affecting the motivation to adhere (eg, beliefs that daily treatment is not necessary and concerns about harm). Such structured discussions are intended to help clinicians to explain the results of the urine analysis with the patients and to tailor adherence support through addressing the specific perceptual and practical factors influencing the patients’ motivation and ability to adhere as recommended in the National Institute for Health and Care Excellence Guidelines.<sup>34</sup>



**Figure.** Association between changes in blood pressure and urinary adherence ratio in initially nonadherent patients. X axis represents the change in urinary adherence ratio (the ratio of detected to prescribed antihypertensive medications), y axis represents the change in clinic blood pressure (BP; mmHg), data points are changes in BP and urinary adherence ratio between the appointments with complete information (both BP and adherence) available, P value indicates level of statistical significance for association between the change in urinary adherence ratio and change in systolic BP (SBP) and diastolic BP (DBP).

The potential benefits of LC-MS/MS–based analysis in managing nonadherent hypertensive patients should not be underestimated. First, a reduction of  $\approx 20$  mmHg in SBP achieved by repeated biochemical analysis may potentially translate into a 45% reduction in risk of coronary heart disease and  $\approx 65\%$  reduction in risk of stroke.<sup>4,35</sup> Conversion of the majority of nonadherent hypertensive patients to adherence with a significant drop in BP would be an important breakthrough in the field, given that previous studies showed limited benefits from complex and costly interventions.<sup>36–38</sup> Based on the previous simulations, 54% improvement in adherence (conversion from nonadherence to adherence) at the population level may reduce the number of strokes, myocardial infarction, kidney disease, and heart failure by  $\approx 4.6$  million with a cost reduction of  $\approx \$39$  billion.<sup>39</sup> In economic terms, nonadherence to antihypertensive medications accounts for  $\approx \$18.5$  billion excess costs to the US health economy.<sup>40</sup> Thus, the change of more than half of nonadherent patients to adherence patients with improvement of their BP control by  $\approx 20$  mmHg is likely to have an important impact on health economy if the tests were used routinely and on a widespread basis. It is worth reflecting that the cost of the assay is less than a monthly supply of antihypertensive medications for some patients. Further larger, prospective randomized controlled trials are necessary to precisely quantify the efficacy of LC-MS/MS–based intervention and elucidate the factors behind the successful conversion from nonadherence to adherence to antihypertensive treatment.

We appreciate some limitations of our study. First, the patients who underwent this analysis represent a specific group of hypertensive patients with suboptimal BP control. Second, our results are based on retrospective analyses of clinical notes, and we recognize the limitation of incomplete data availability and unmeasured confounding inherent to this type of analysis. Third, information on the reasons for nonadherence was not formally a part of our data collection. However, forgetfulness emerges as one of the most common drivers of suboptimal adherence in interviews with patients conducted at University Hospitals of Leicester BP clinic. This form of non-intentional nonadherence to antihypertensive therapy was also demonstrated as one of the main barriers to adherence in other studies.<sup>41,42</sup> Our study is not immune from the so-called toothbrush effect<sup>43</sup>—patients may have taken their medications just before their clinic appointment and thus influence their clinic BP measurement. To this end, the availability of 24-hour ambulatory BP monitoring data showing the same direction of BP changes is reassuring because this investigation was conducted at a different time point from the clinic appointment. Finally, our data provide insights into repeated snapshots of adherence rather than continuous therapeutic persistence.

### Perspectives

We show that repeated biochemical screening for nonadherence by LC-MS/MS is associated with BP reduction. We further demonstrate that a majority of nonadherent patients can be converted to full adherence by repeated testing with optimization of their BP control. To this end, we suggest that repeated LC-MS/MS–based analysis should be considered as a potential therapeutic approach to nonadherence-driven pseudo-resistant hypertension. Future well-designed studies are

needed to confirm these findings in prospective clinical trials and address the impact of this test on cardiovascular outcomes and its impact on the global health economy.

### Sources of Funding

B. Keavney is supported by a British Heart Foundation Personal Chair. M. Tomaszewski's work on adherence is supported by British Heart Foundation Clinical Study (CS/17/3/32799).

### Disclosures

B. Williams has received modest honoraria for lectures from Novartis, Servier, Daiichi Sankyo, Boehringer Ingelheim, and Pfizer outside the submitted work. M. Tomaszewski received modest honoraria for lectures/presentations from Boehringer Ingelheim. The other authors report no conflicts.

### References

1. WHO. A global brief on hypertension. [who.int/cardiovascular\\_diseases/publications/global\\_brief\\_hypertension](http://who.int/cardiovascular_diseases/publications/global_brief_hypertension). Accessed January 16, 2017.
2. Neal B, MacMahon S, Chapman N; Blood Pressure Lowering Treatment Trialists' Collaboration. Effects of ACE inhibitors, calcium antagonists, and other blood-pressure-lowering drugs: results of prospectively designed overviews of randomised trials. Blood Pressure Lowering Treatment Trialists' Collaboration. *Lancet*. 2000;356:1955–1964.
3. Chobanian AV, Bakris GL, Black HR, Cushman WC, Green LA, Izzo JL Jr, Jones DW, Materson BJ, Oparil S, Wright JT Jr, Roccella EJ; National Heart, Lung, and Blood Institute Joint National Committee on Prevention, Detection, Evaluation, and Treatment of High Blood Pressure; National High Blood Pressure Education Program Coordinating Committee. The Seventh Report of the Joint National Committee on Prevention, Detection, Evaluation, and Treatment of High Blood Pressure: the JNC 7 report. *JAMA*. 2003;289:2560–2572. doi: 10.1001/jama.19.2560.
4. Law MR, Morris JK, Wald NJ. Use of blood pressure lowering drugs in the prevention of cardiovascular disease: meta-analysis of 147 randomised trials in the context of expectations from prospective epidemiological studies. *BMJ*. 2009;338:b1665.
5. Kotseva K, Wood D, De Bacquer D, et al; EUROASPIRE Investigators. EUROASPIRE IV: a European Society of Cardiology survey on the lifestyle, risk factor and therapeutic management of coronary patients from 24 European countries. *Eur J Prev Cardiol*. 2016;23:636–648. doi: 10.1177/2047487315569401.
6. Yoon S, Fryar C, Carroll M. Hypertension prevalence and control among adults: United States, 2011–2014. NCHS Data Brief, no 220. Hyattsville, MD: National Center for Health Statistics. [www.cdc.gov/nchs/data/data-briefs/db220.htm](http://www.cdc.gov/nchs/data/data-briefs/db220.htm). Accessed December 18, 2016.
7. Corrao G, Zambon A, Parodi A, Poluzzi E, Baldi I, Merlino L, Cesana G, Mancia G. Discontinuation of and changes in drug therapy for hypertension among newly-treated patients: a population-based study in Italy. *J Hypertens*. 2008;26:819–824. doi: 10.1097/HJH.0b013e3282f4edd7.
8. Jung O, Gechter JL, Wunder C, Paulke A, Bartel C, Geiger H, Toennes SW. Resistant hypertension? Assessment of adherence by toxicological urine analysis. *J Hypertens*. 2013;31:766–774. doi: 10.1097/HJH.0b013e32835e2286.
9. Chowdhury R, Khan H, Heydon E, Shroufi A, Fahimi S, Moore C, Stricker B, Mendis S, Hofman A, Mant J, Franco OH. Adherence to cardiovascular therapy: a meta-analysis of prevalence and clinical consequences. *Eur Heart J*. 2013;34:2940–2948. doi: 10.1093/eurheartj/eh295.
10. Tomaszewski M, White C, Patel P, Masca N, Damani R, Hepworth J, Samani NJ, Gupta P, Madira W, Stanley A, Williams B. High rates of non-adherence to antihypertensive treatment revealed by high-performance liquid chromatography-tandem mass spectrometry (HP LC-MS/MS) urine analysis. *Heart*. 2014;100:855–861. doi: 10.1136/heartjnl-2013-305063.
11. Ceral J, Habrdova V, Vorisek V, Bima M, Pelouch R, Solar M. Difficult-to-control arterial hypertension or uncooperative patients? The assessment of serum antihypertensive drug levels to differentiate non-responsiveness from non-adherence to recommended therapy. *Hypertens Res*. 2011;34:87–90. doi: 10.1038/hr.2010.183.
12. Strauch B, Petrák O, Zelinka T, Rosa J, Somlóová Z, Indra T, Chytil L, Marešová V, Kurcová I, Holaj R, Wichterle D, Widimský J Jr. Precise assessment of noncompliance with the antihypertensive therapy in patients with resistant hypertension using toxicological serum analysis. *J Hypertens*. 2013;31:2455–2461. doi: 10.1097/HJH.0b013e3283652c61.

13. Brinker S, Pandey A, Ayers C, Price A, Raheja P, Arbiq D, Das SR, Halm EA, Kaplan NM, Vongpatanasin W. Therapeutic drug monitoring facilitates blood pressure control in resistant hypertension. *J Am Coll Cardiol*. 2014;63:834–835. doi: 10.1016/j.jacc.2013.10.067.
14. Rosa J, Zelinka T, Petrák O, Štrauch B, Šomlóvá Z, Indra T, Holaj R, Čurila K, Toušek P, Šenitko M, Widimský P, Widimský J Jr. Importance of thorough investigation of resistant hypertension before renal denervation: should compliance to treatment be evaluated systematically? *J Hum Hypertens*. 2014;28:684–688. doi: 10.1038/jhh.2014.3.
15. Ewen S, Meyer MR, Cremers B, Laufs U, Helffer AG, Linz D, Kindermann I, Ukena C, Burnier M, Wagenpfeil S, Maurer HH, Böhm M, Mahfoud F. Blood pressure reductions following catheter-based renal denervation are not related to improvements in adherence to antihypertensive drugs measured by urine/plasma toxicological analysis. *Clin Res Cardiol*. 2015;104:1097–1105. doi: 10.1007/s00392-015-0905-5.
16. Pandey A, Raza F, Velasco A, Brinker S, Ayers C, Das SR, Morisky DE, Halm EA, Vongpatanasin W. Comparison of Morisky Medication Adherence Scale with therapeutic drug monitoring in apparent treatment-resistant hypertension. *J Am Soc Hypertens*. 2015;9:420–426.e2. doi: 10.1016/j.jash.2015.04.004.
17. Patel P, Gupta PK, White CM, Stanley AG, Williams B, Tomaszewski M. Screening for non-adherence to antihypertensive treatment as a part of the diagnostic pathway to renal denervation. *J Hum Hypertens*. 2016;30:368–373. doi: 10.1038/jhh.2015.103.
18. Schmieder RE, Ott C, Schmid A, Friedrich S, Kistner I, Ditting T, Veelken R, Uder M, Toennes SW. Adherence to antihypertensive medication in treatment-resistant hypertension undergoing renal denervation. *J Am Heart Assoc*. 2016;5:e002343. doi:10.1161/JAHA.115.002343.
19. Gupta P, Patel P, Štrauch B, et al. Risk factors for nonadherence to antihypertensive treatment. *Hypertension*. 2017;69:1113–1120. doi: 10.1161/HYPERTENSIONAHA.116.08729.
20. NICE. CG127 hypertension: clinical management of primary hypertension in adults. www.nice.org.uk/CG127. Accessed February 16, 2017.
21. Filipovský J, Widimský J Jr, Ceral J, Cífková R, Horký K, Linhart A, Monhart V, Rosolová H, Seidlerová J, Souček M, Špinar J, Vítovec J, Widimský J. Diagnostické a léčebné postupy u arteriální hypertenze – verze 2012. Doporučení české společnosti pro hypertenzi. *Hypertenze a kardiiovaskulární prevence*. 2012;3:1–16.
22. Chytil L, Cvačka J, Marešová V, Štrauch B, Widimský J Jr, Štícha M, Slanař O. Development of a fast LC-MS/MS method for quantification of rilmenidine in human serum: elucidation of fragmentation pathways by HRMS. *J Mass Spectrom*. 2010;45:1179–1185. doi: 10.1002/jms.1809.
23. Iriarte G, Gonzalez O, Ferreirós N, Maguregui MI, Alonso RM, Jiménez RM. Validation of a fast liquid chromatography-UV method for the analysis of drugs used in combined cardiovascular therapy in human plasma. *J Chromatogr B Analyt Technol Biomed Life Sci*. 2009;877:3045–3053. doi: 10.1016/j.jchromb.2009.07.018.
24. Chytil L, Strauch B, Cvačka J, Marešová V, Widimský J Jr, Holaj R, Slanař O. Determination of doxazosin and verapamil in human serum by fast LC-MS/MS: application to document non-compliance of patients. *J Chromatogr B Analyt Technol Biomed Life Sci*. 2010;878:3167–3173. doi: 10.1016/j.jchromb.2010.09.032.
25. Florczak E, Tokarczyk B, Warchol-Celińska E, Szwench-Pietrasz E, Prejbisz A, Gosk M, Kabat M, Narkiewicz K, Januszewicz A, Kala M. Assessment of adherence to treatment in patients with resistant hypertension using toxicological serum analysis. A subgroup evaluation of the RESIST-POL study. *Pol Arch Med Wewn*. 2015;125:65–72.
26. Nakagawa S, Schielzeth H. A general and simple method for obtaining R<sup>2</sup> from generalized linear mixed-effects models. *Methods Ecol Evol*. 2013;4:133–142.
27. R Core Team. *A Language and Environment for Statistical Computing*. Vienna, Austria: R Foundation for Statistical Computing. https://www.R-project.org. Accessed December 12, 2016.
28. Bates D, Maechler M, Bolker B, Walker S. Fitting linear mixed-effects models using lme4. *J Stat Softw*. 2015;67:1–42.
29. Dowle M, Srinivasan A, Short T, Lianoglou S. with contributions from Saporta R, Antonyan E. data.table: extension of Data frame. R package version 1.9.6.2015. https://CRAN.R-project.org/package=data.table Accessed October 06, 2016.
30. Wickham H, ed. *Elegant Graphics for Data Analysis*. New York, NY: Springer-Verlag; 2009.
31. Calhoun DA, Jones D, Textor S, Goff DC, Murphy TP, Toto RD, White A, Cushman WC, White W, Sica D, Ferdinand K, Giles TD, Falkner B, Carey RM; American Heart Association Professional Education Committee. Resistant hypertension: diagnosis, evaluation, and treatment: a scientific statement from the American Heart Association Professional Education Committee of the Council for High Blood Pressure Research. *Circulation*. 2008;117:e510–e526. doi: 10.1161/CIRCULATIONAHA.108.189141.
32. Horne R, Chapman SC, Parham R, Freemantle N, Forbes A, Cooper V. Understanding patients' adherence-related beliefs about medicines prescribed for long-term conditions: a meta-analytic review of the Necessity-Concerns Framework. *PLoS One*. 2013;8:e80633. doi: 10.1371/journal.pone.0080633.
33. WHO. Adherence to long-term therapies: evidence for action. www.who.int/chp/knowledge/publications/adherence\_full\_report.pdf. Accessed December 12, 2016.
34. NICE. NICE Clinical Guideline 76: medicines adherence. www.nice.org.uk/CG76. Accessed April 5, 2017.
35. Law MR, Wald NJ, Morris JK, Jordan RE. Value of low dose combination treatment with blood pressure lowering drugs: analysis of 354 randomised trials. *BMJ*. 2003;326:1427. doi: 10.1136/bmj.326.7404.1427.
36. Schroeder K, Fahey T, Ebrahim S. Interventions for improving adherence to treatment in patients with high blood pressure in ambulatory settings. *Cochrane Database Syst Rev*. 2004;2:CD004804.
37. Nieuwlaet R, Wilczynski N, Navarro T, et al. Interventions for enhancing medication adherence. *Cochrane Database Syst Rev*. 2014;11:CD000011.
38. Viswanathan M, Kahwati LC, Golin CE, Blalock SJ, Coker-Schwimmer E, Posey R, Lohr KN. Medication therapy management interventions in outpatient settings: a systematic review and meta-analysis. *JAMA Intern Med*. 2015;175:76–87. doi: 10.1001/jamainternmed.2014.5841.
39. Koçkaya G, Wertheimer A. Can we reduce the cost of illness with more compliant patients? An estimation of the effect of 100% compliance with hypertension treatment. *J Pharm Pract*. 2011;24:345–350. doi: 10.1177/0897190010389336.
40. IMS Institute of Healthcare Informatics. Avoidable costs in US health care. www.imshealth.com/en\_ZA/thought-leadership/ims-institute/reports/avoidable-costs. Accessed February 23, 2017.
41. Molloy GJ, Messerli-Bürgy N, Hutton G, Wikman A, Perkins-Porras L, Steptoe A. Intentional and unintentional non-adherence to medications following an acute coronary syndrome: a longitudinal study. *J Psychosom Res*. 2014;76:430–432. doi: 10.1016/j.jpsychores.2014.02.007.
42. Pucci M, Martin U. Detecting non-adherence by urine analysis in patients with uncontrolled hypertension: rates, reasons and reactions. *J Hum Hypertens*. 2017;31:253–257. doi: 10.1038/jhh.2016.69.
43. Chatterjee JS. From compliance to concordance in diabetes. *J Med Ethics*. 2006;32:507–510. doi: 10.1136/jme.2005.012138.

## Novelty and Significance

### What Is New?

- Hypertensive patients with biochemically confirmed nonadherence to antihypertensive treatment respond to the liquid chromatography-tandem mass spectrometry analysis with a significant drop in blood pressure.
- Eighty percent of initially nonadherent hypertensive patients show an improvement in their adherence in response to initial biochemical screening.

### What Is Relevant?

- Biochemical testing for nonadherence has an important therapeutic potential.

### Summary

Biochemical screening for nonadherence to antihypertensive treatment leads to a significant improvement in blood pressure as a result of improved adherence.

## Biochemical Screening for Nonadherence Is Associated With Blood Pressure Reduction and Improvement in Adherence

Pankaj Gupta, Prashanth Patel, Branislav Strauch, Florence Y. Lai, Artur Akbarov, Gaurav S. Gulsin, Alison Beech, Vera Maresová, Peter S. Topham, Adrian Stanley, Herbert Thurston, Paul R. Smith, Robert Horne, Jirí Widimský, Bernard Keavney, Anthony Heagerty, Nilesh J. Samani, Bryan Williams and Maciej Tomaszewski

*Hypertension*. 2017;70:1042-1048; originally published online August 28, 2017;  
doi: 10.1161/HYPERTENSIONAHA.117.09631

*Hypertension* is published by the American Heart Association, 7272 Greenville Avenue, Dallas, TX 75231  
Copyright © 2017 American Heart Association, Inc. All rights reserved.  
Print ISSN: 0194-911X. Online ISSN: 1524-4563

The online version of this article, along with updated information and services, is located on the World Wide Web at:

<http://hyper.ahajournals.org/content/70/5/1042>

Free via Open Access

**Permissions:** Requests for permissions to reproduce figures, tables, or portions of articles originally published in *Hypertension* can be obtained via RightsLink, a service of the Copyright Clearance Center, not the Editorial Office. Once the online version of the published article for which permission is being requested is located, click Request Permissions in the middle column of the Web page under Services. Further information about this process is available in the [Permissions and Rights Question and Answer](#) document.

**Reprints:** Information about reprints can be found online at:  
<http://www.lww.com/reprints>

**Subscriptions:** Information about subscribing to *Hypertension* is online at:  
<http://hyper.ahajournals.org/subscriptions/>