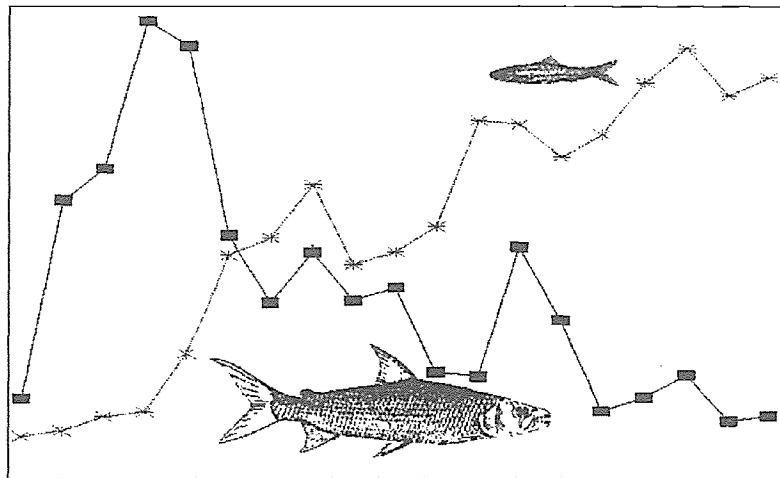


ISSN 1024-8188

DEPARTMENT OF NATIONAL PARKS AND WILDLIFE MANAGEMENT



## 1997 FISHERIES STATISTICS LAKE KARIBA - ZIMBABWE SHORE



PROJECT REPORT No. 91

by :

N. SONGORE, M. MUGWAGWA & A. MOYO  
Lake Kariba Fisheries Research Institute  
P. Bag 2075  
Kariba  
email: lkfri@id.co.zw

May 1998

## LANDINGS SUMMARY

### 1. The Pelagic Fishery (Kapenta)

Basin	1996	1997
Sanyati	8183	8132
Bumi / Chalala	3516	5265
Sengwa	1839	2053
Binga & Mlibizi	1885	1584
<b>Total</b>	<b>15423</b>	<b>17034</b>

### 2. The Inshore Fishery

Area	Catch in tonnes	
	1996	1997
C1	36.85	72.39*
C2	88.20	116.18
C3	17.71	37.49*
C4	116.54	120.86
C5	69.47	111.49
C6	1.68	14.04
C7	not recorded	
-----		
Total for enumerated villages (only)	289.34	362.57
-----		
<b>Total estimate</b>	<b>957.89</b>	<b>1115.11</b>

\* Cooperative landings

### Grand total for Zimbabwe

17 034t (Kapenta) + 1115.11 (inshore) + 7.03t (tigerfish bycatch) = 18 156.14tonnes

# CONTENTS

## PART I : The Pelagic (Kapenta) Fishery

Introduction . . . . .	1
Figure 1: Kapenta Fishing Zones (basins) on Lake Kariba . . . . .	2
Figure 2: Location of Kapenta fishing bases on Lake Kariba . . . . .	3
Figure 3: Percentage of total Kapenta landings for each basin, 1997 . . . . .	4
Figure 4: Percentage of total number of rigs that fished per basin, 1997 . . . . .	4
Figure 5 : Trends in the Kapenta fishery, 1974 - 1997 (CPUE; Catch; Effort) . . . . .	5
Table 1 : Landings (tonnes) of Kapenta, 1974 - 1997 . . . . .	6
Figure 6 : Trends in the Kapenta fishery by basin, 1974 to 1997 . . . . .	7
Table 2 : Total effort (unit night) in the Kapenta fishery, 1974 - 1997 . . . . .	8
Table 3 : Monthly Kapenta catches (tonnes), 1997 . . . . .	9
Figure 7 : Monthly trends in Kapenta catches, 1997 . . . . .	10
Table 4 : Mean catch per unit effort (tonnes/boat/night) of Kapenta, 1974 -1997 . . . . .	11
Table 5 : Monthly fishing effort (boat night) for Kapenta, 1997 . . . . .	12
Table 6 : Monthly tigerfish by-catch in kilograms (from Kapenta rigs), 1997 . . . . .	13
Figure 8 : Monthly trends in tigerfish by-catch, 1997 . . . . .	14
Table 7 : Tigerfish by-catch (tonnes) , 1974 - 1997 . . . . .	15

## PART II : The Inshore Fishery

Sampling in the Inshore Fishery . . . . .	16
Figure 9: Location of Artisanal fishing villages on Lake Kariba . . . . .	17
Table 8: Illustration of estimation of data in enumerated villages in Inshore Fishery . . . . .	18
Table 9 : Catch and effort summary for enumerated villages, 1997 . . . . .	19

Table 10 : Estimated catch composition for 1997 based on enumerated villages . . . . .	20
Figure 10 : Percentage catch per area of total landings in the Inshore Fishery, 1997 . . . . .	21
Figure 11 : Catch proportions of different species caught in the Inshore area . . . . .	21
Figure 12: Species composition of Inshore landings (%kg) by area . . . . .	22
Figure 13: Catch and Effort Trends in the Inshore Fishery, 1983 - 1997. . . . .	23
Table 11 : Catch and Effort for Gache Gache Co-operative Society, 1985-1997 . . . . .	24
Table 12 : Catch and Effort for Nyaodza Co-operative Society, 1987 to 1997 . . . . .	25
Table 13 : Catch and Effort for Area C1, 1973 to 1997 . . . . .	26
Table 14 : Catch and Effort for Area C2, 1973 to 1997 . . . . .	27
Table 15 : Catch and Effort for Area C3, 1973 to 1997 . . . . .	28
Table 16 : Catch and Effort for Area C4, 1973 to 1997 . . . . .	29
Table 17 : Catch and Effort for Area C5, 1973 to 1997 . . . . .	30
Table 18 : Catch and Effort for Area C6 and C7, 1973 to 1997 . . . . .	31

*THE PELAGIC (KAPENTA) FISHERY*



## Introduction

This section of the report covers Kapenta (*Limnothrissa miodon*) catch records from the Zimbabwean part of Lake Kariba. Data are compiled from returns which the Kapenta fishing companies submit to Lake Kariba Fisheries Research Institute every month. Tiger fish bycatch records are not accurate because not all fishermen declare all their bycatches to their employers. However, the recorded landings give a general trend.

Kapenta usually constitute about 94% of the total catch from Lake Kariba. Illegal sales of Kapenta before landing are still continuing. The scale of such illegal activities is difficult to quantify but we estimate that at least 30% of the total Kapenta catch is illegally sold before landing and thus not recorded. The figures of the Kapenta landings presented in the report must therefore be viewed as an underestimate of the total catch.

Kapenta fishing operations are based at 11 sites (Figure 2). Of the 305 rigs registered to 73 companies in 1997, returns were received from 285 rigs which were operating. For statistical purposes, catches are recorded for the 5 hydrological basins namely Mlibizi, Binga, Sengwa, (Bumi/Chalala) and Kariba (also known as Sanyati). The catches from Binga and Mlibizi are combined as the operators in these regions share common fishing grounds.

Kapenta fishing Operations are restricted to areas where water depth is greater than 20 metres and a radius of 3 km from developed areas along the shoreline. Fishing is not allowed in Leisure Bay, Charara Bay, Masango Bay, Gache Gache Bay and also in river mouths (Figure 1).

Figure 1: Kapenta Fishing Zones (basins) on Lake Kariba

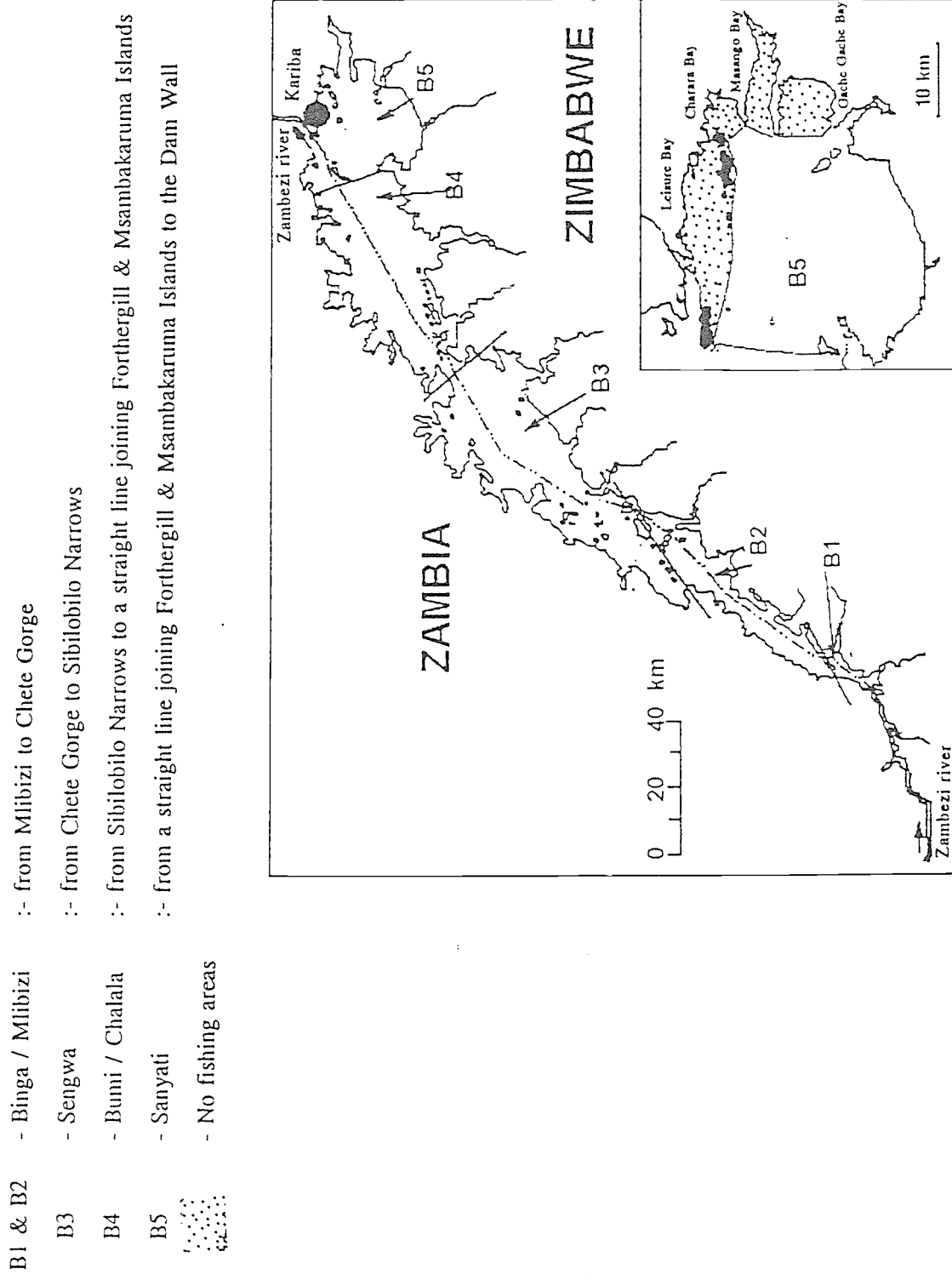




Figure 2: Location of Kapenta fishing bases on Lake Kariba

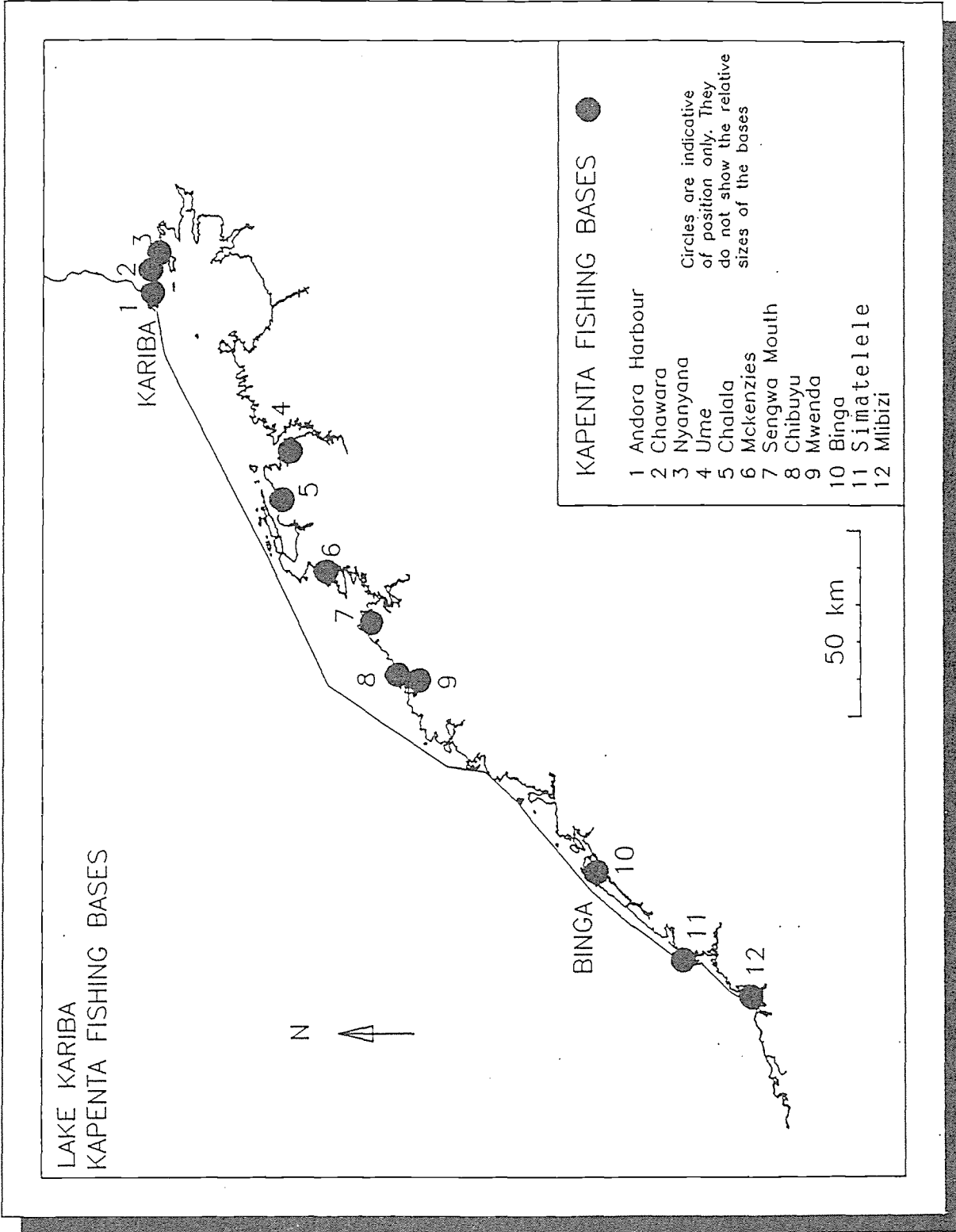


Figure 3 : Percentage of total Kapenta landings for each basin, 1997

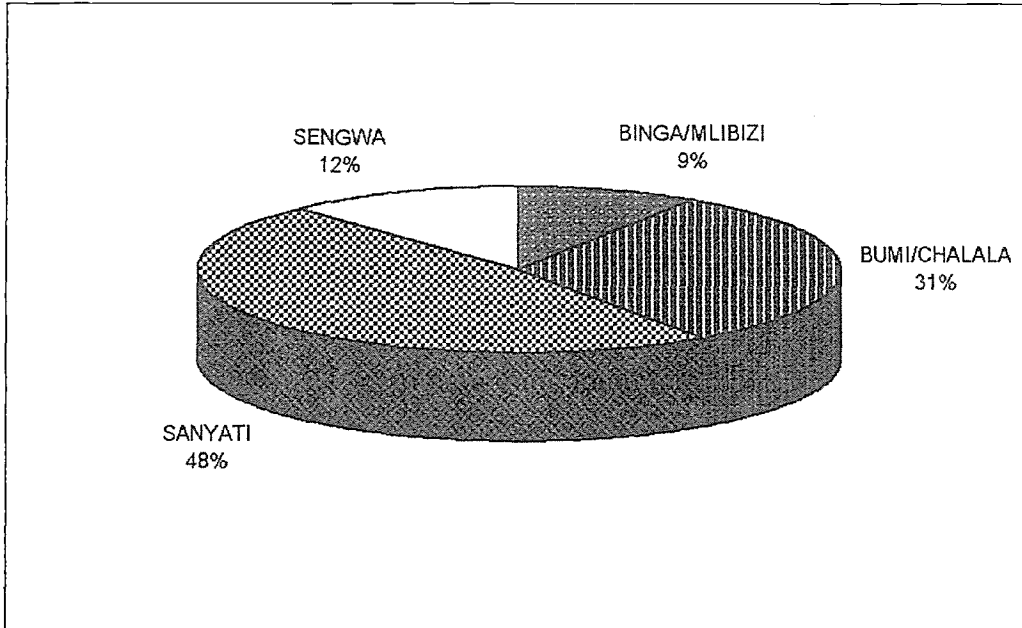


Figure 4: Percentage of total number of rigs that fished per basin, 1996

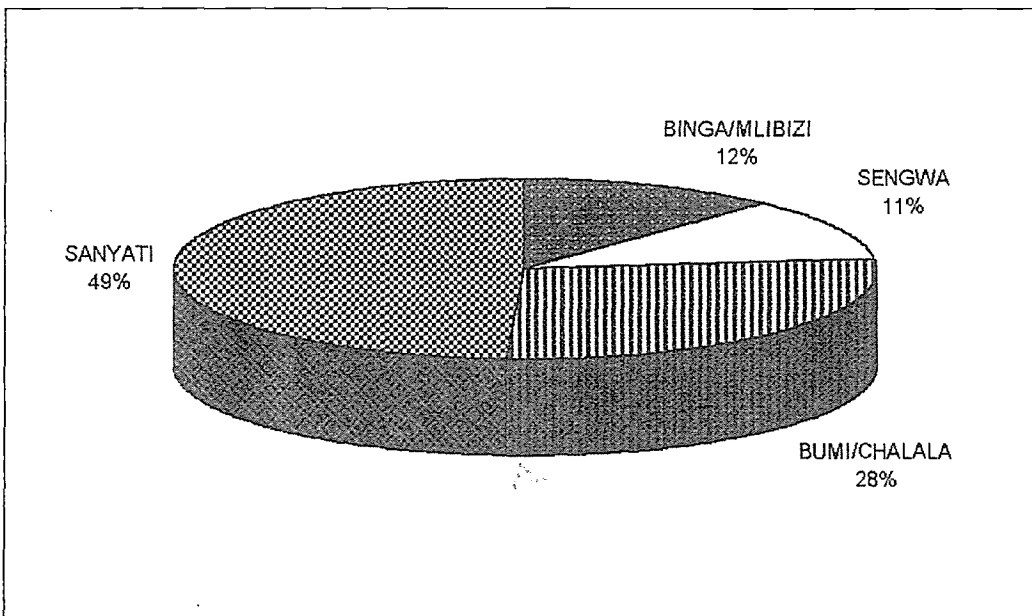


Figure 5 : Trends in the Kapenta fishery, 1974 - 1997 (CPUE; Catch; Effort)

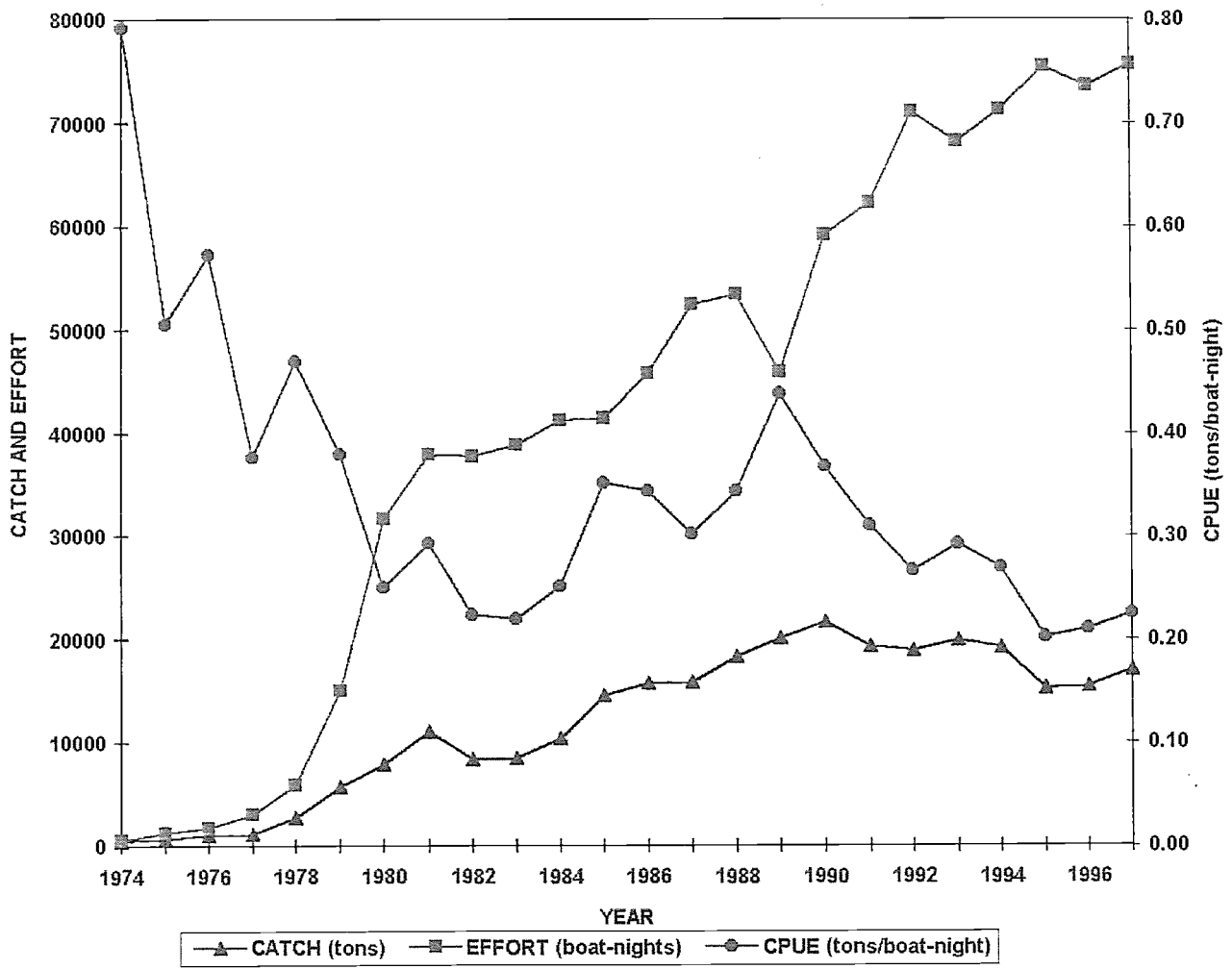


Table 1 : Landings (tonnes) of Kapenta, 1974 - 1997

YEAR	AREA					TOTAL
	Sanyati	Bumi	Chalala	Sengwa	Binga / Mlibizi	
1974	488					488
1975	656					656
1976	1050					1050
1977	1172					1172
1978	2770			35		2805
1979	5475	78	8	75	96	5732
1980	5938	173	1261	115	465	7952
1981	7408	285	2879	175	390	11137
1982	5249	234	2544	113	310	8450
1983	5590	170	2516	96	176	8548
1984	6286	305	3417	74	312	10394
1985	9179	338	4658	105	306	14586
1986	9077	369	4912	944	445	15747
1987	8194	288	4847	1832	662	15823
1988	8799	186	5975	2513	893	18366
1989	10199	146	6036	2438	1293	20112
1990	11143	194	5977	2692	1752	21758
1991	9867	92	4893	2714	1740	19306
1992	10371	4620		2279	1660	18937
1993	10690	5330		2139	1794	19958
1994	10216	4961		2295	1760	19232
1995	7713	3568		1825	2174	15280
1996	8183	3516		1839	1885	15423
1997	8132	5265		2053	1584	17034

Figure 6 : Trends in the Kapenta fishery by basin, 1974 to 1997

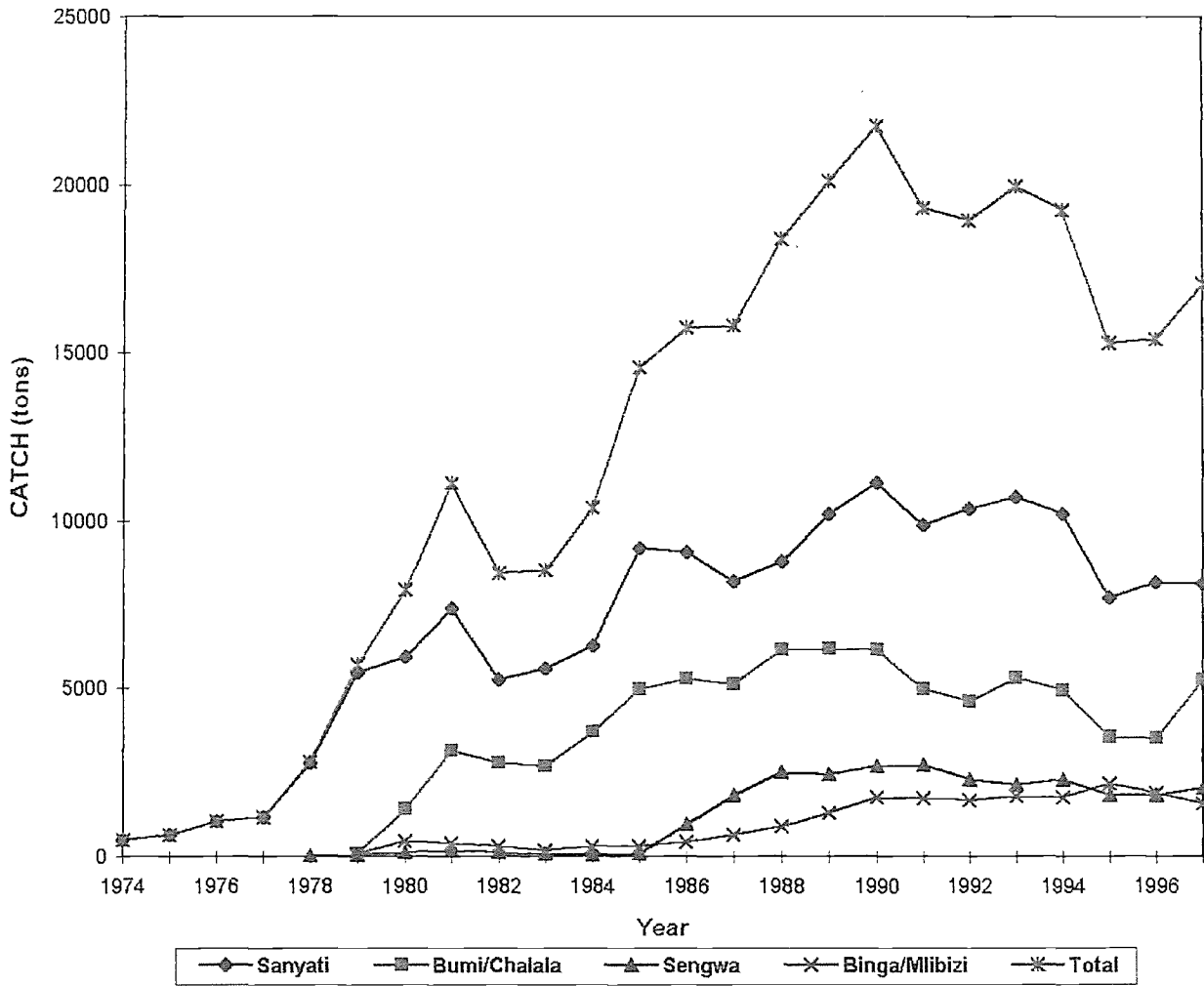


Table 2 : Total effort (unit night) in the Kapenta fishery, 1974 - 1997

YEAR	AREA					TOTAL
	Sanyati	Bumi	Chalala	Sengwa	Binga / Mlibizi	
1974	616					616
1975	1298					1298
1976	1833					1833
1977	3114					3114
1978	5877			96		5973
1979	14003	195	43	324	543	15108
1980	22775	789	6046	586	1551	31747
1981	24393	1770	9953	668	1188	37972
1982	23816	1467	10560	539	1394	37776
1983	24481	1036	11643	642	1063	38865
1984	25112	1077	13253	499	1293	41234
1985	24245	1155	14319	449	1235	41403
1986	26153	1245	15140	1688	1564	45790
1987	29702	1410	15966	3544	1792	52414
1988	29501	1002	16120	4356	2424	53403
1989	28670	887	16716	4957	3689	45919
1990	31160	952	16854	5396	4831	59193
1991	33133	666	17255	6314	4840	62208
1992	37544	20053		7359	6109	71066
1993	37533	18883		5880	5859	68155
1994	36926	20395		8308	5620	71249
1995	37613	18678		9114	10038	75443
1996	38079	16536		8441	10468	73524
1997	39410	18546		8607	9070	75633

Table 3 : Monthly Kapenta catches (tonnes), 1997

YEAR	AREA				TOTAL
	Sanyati	Bumi / Chalala	Sengwa	Binga / Mlibizi	
January	469	287	65	93	914
February	409	198	75	97	779
March	692	199	97	112	1101
April	607	292	147	107	1153
May	463	361	195	100	1119
June	654	700	305	153	1811
July	622	543	182	137	1484
August	1374	866	323	258	2821
September	1159	761	351	229	2500
October	642	415	132	113	1302
November	679	370	114	98	1261
December	364	272	65	89	790
<b>Total</b>	<b>8132</b>	<b>5265</b>	<b>2053</b>	<b>1584</b>	<b>17034</b>

Figure 7: Monthly trends in Kapenta catches, 1997

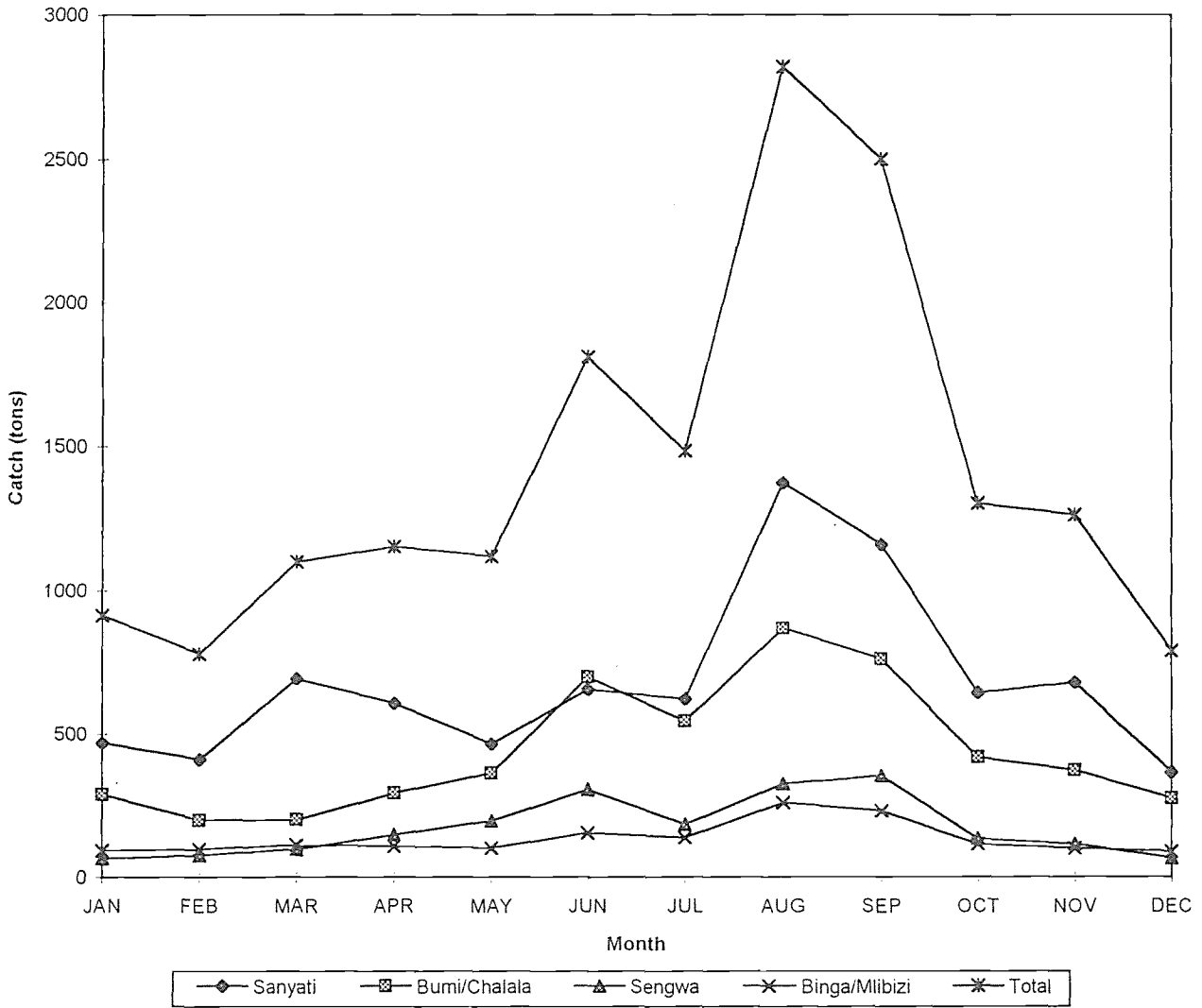




Table 4 : Mean catch per unit effort (tonnes/boat/night) of Kapenta, 1974 -1997

YEAR	AREA					TOTAL
	Sanyati	Bumi	Chalala	Sengwa	Binga / Mlibizi	
1974	0.78					0.78
1975	0.51					0.51
1976	0.57					0.57
1977	0.38					0.38
1978	0.47				0.36	0.47
1979	0.34	0.40	0.19	0.26	0.18	0.37
1980	0.26	0.22	0.21	0.20	0.31	0.25
1981	0.30	0.17	0.29	0.26	0.23	0.29
1982	0.22	0.16	0.25	0.21	0.24	0.23
1983	0.23	0.16	0.22	0.18	0.17	0.22
1984	0.25	0.28	0.26	0.17	0.24	0.25
1985	0.40	0.36	0.30	0.23	0.27	0.36
1986	0.35	0.26	0.36	0.53	0.30	0.35
1987	0.26	0.15	0.30	0.50	0.36	0.30
1988	0.29	0.19	0.37	0.58	0.37	0.34
1989	0.36	0.16	0.36	0.49	0.35	0.37
1990	0.36	0.20	0.35	0.50	0.36	0.37
1991	0.29	0.13	0.28	0.43	0.35	0.31
1992	0.27	0.23		0.36	0.27	0.27
1993	0.28	0.28		0.36	0.30	0.29
1994	0.28	0.24		0.28	0.31	0.27
1995	0.22	0.19		0.2	0.22	0.20
1996	0.21	0.11		0.22	0.34	0.21
1997	0.21	0.28		0.24	0.17	0.23

Table 5 : Monthly fishing effort (boat night) for Kapenta, 1997

MONTH	AREA				TOTAL
	Binga/Mlibizi	Sengwa	Bumi / Chalala	Sanyati	
January	708	716	1642	3323	6389
February	645	599	1453	3108	5805
March	770	677	1602	3570	6619
April	781	749	1531	3346	6407
May	760	782	1503	3437	6482
June	770	789	1658	3415	6632
July	762	763	1595	3280	6400
August	819	840	1790	3620	7069
September	831	743	1684	3363	6621
October	815	693	1529	3309	6346
November	767	677	1310	3238	5992
December	642	579	1249	2401	4871
Total	9070	8607	18546	39410	75633

Table 6 : Monthly tigerfish by-catch in kilograms (from Kapenta rigs), 1997

MONTH	AREA				TOTAL
	Sanyati	Bumi / Chalala	Sengwa	Binga / Mlibizi	
January	119	34	15	135	304
February	174	34	2	145	355
March	754	183	8	54	999
April	387	52	21	391	851
May	210	36	3	126	375
June	70	59	40	266	435
July	33	82	17	377	509
August	50	79	34	317	479
September	88	50	9	247	394
October	98	44	20	189	351
November	464	85	16	274	839
December	727	115	44	255	1141
<b>Total</b>	<b>3174</b>	<b>853</b>	<b>229</b>	<b>2776</b>	<b>7032</b>

Figure 8 : Monthly trends in tigerfish by-catch, 1997

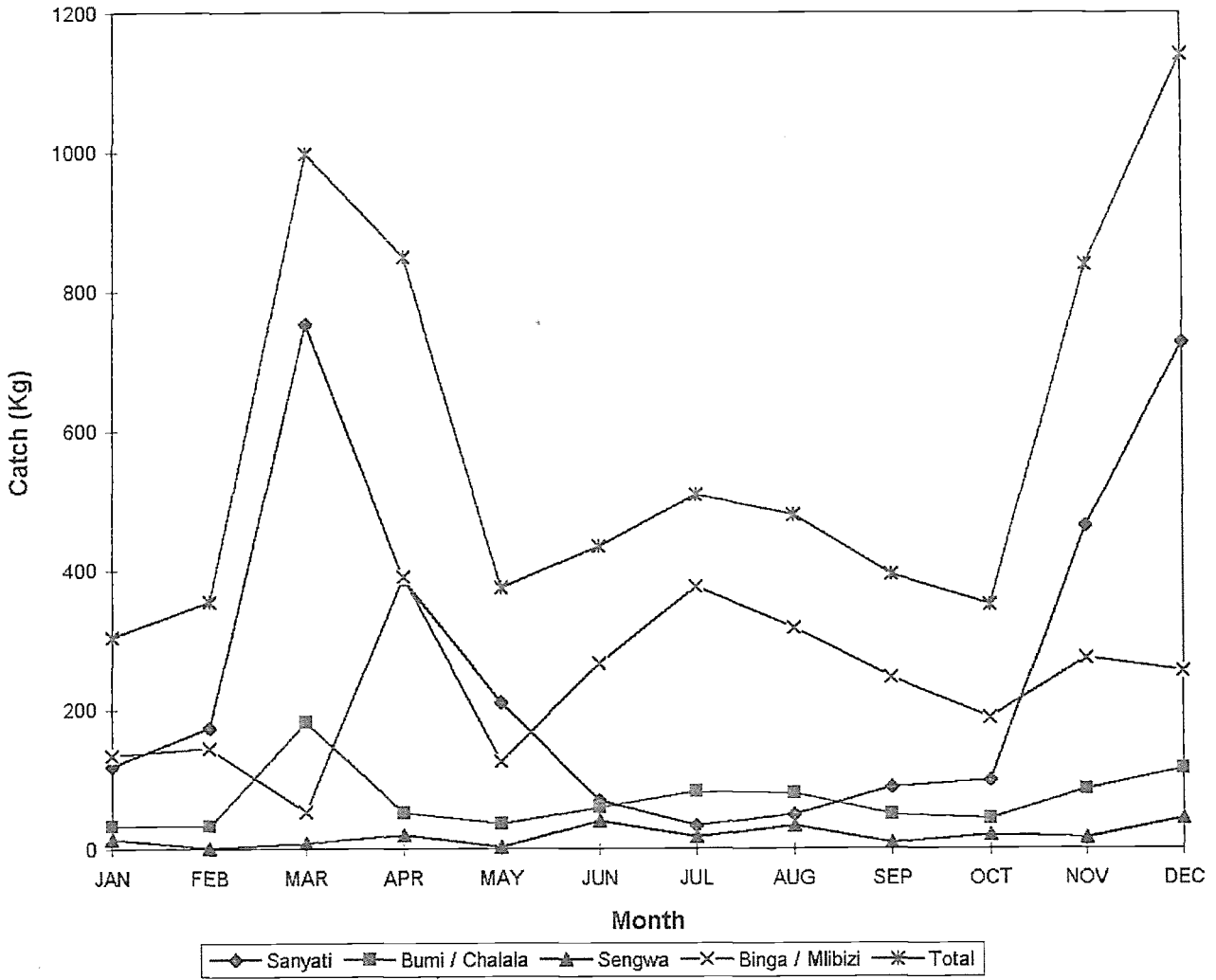


Table 7 : Tigerfish by-catch (tonnes), 1974 - 1997

YEAR	AREA					TOTAL
	Sanyati	Bumi	Chalala	Sengwa	Binga / Mlibizi	
1974	18					18
1975	81					81
1976	91					91
1977	138					138
1978	129			1		130
1979	64	1		3	2	70
1980	41	1		2	5	49
1981	54	6	2	1	2	65
1982	44	3	1	1	1	50
1983	45	4	3	1	1	54
1984	22	2	2	-	1	27
1985	22	1	2	1	-	26
1986	40	2	19	3	3	67
1987	31	2	6	3	2	44
1988	8	1	3	1	2	15
1989	11	0.5	4	1	3	19.5
1990	14	0.5	4	3	5	26.5
1991	8	0	2	1	1	12
1992	8	1.4	1.1	1.1	2.8	13.7
1993	4.8	1.2		1.3	3	10.3
1994	12.1	3.2		2.1	1.8	19.2
1995	4	0.3		0.6	2.9	7.9
1996	1.9	0.1		0.5	3.9	6.4
1997	3.2	0.8		0.2	2.8	7.0



*THE INSHORE FISHERY*

## Sampling in the Inshore Fishery

The sampling system in use has been designed to provide a statistically valid catch estimation for the whole of the Zimbabwe inshore fishery on Lake Kariba. Whereas the Kapenta data represent total actual landed catches, data from the artisanal fishery are from sampled catches. Thus all figures presented for the artisanal fishery are estimates. The exceptions are the data from Nyaodza, Gache Gache and Luyando co-operatives which submit returns for the whole year reflecting the actual total landings. The fishing areas are divided into 7 zones, C1 to C7 (Figure 9) thus all areas and all basins are represented. The fishing activities are simplified because there is only one type of gear (gill-nets) used throughout the whole inshore fishery of Zimbabwe.

The Kapenta, which occupy the open pelagic waters of the lake represent a unit stock which is harvested by both Zimbabwe and Zambia; whereas the artisanal fishery exploits inshore species which, in general, occupy water less than 10m deep along the shoreline. The Zambian and Zimbabwean inshore fisheries may therefore be considered to be exploiting two separate stocks. The inshore fishery of Zambia is therefore assumed to have minimal interaction upon the inshore fishery of Zimbabwe and vice versa.

As it is not possible to sample all villages nor the total landings for any particular village for the whole year, 10 representative villages are enumerated for 10 days every month. The sampled catch is raised to an estimate of the total catch per village by multiplying by the ratio between total number of days sampled and days in the year. To estimate the total catch for the Zimbabwean side of the lake, the ratio between the number of fishermen in the villages sampled and the total number of fishermen on the Zimbabwean side of the lake is used.

The above calculations make the assumption that fishing takes place on 360 days and that the catchability of the species is the same throughout the whole lake. It is also assumed that the number of active fishermen per village is approximately the same throughout the year.

National Parks regulations state that each fisherman is allowed a maximum of 5 gill-nets with a minimum mesh size of 100mm, and conformation to this regulation is assumed for catch effort calculations.

The main species in the inshore fishery are the breams *Oreochromis mortimeri*, *Sargochromis codringtonii*, *Tilapia rendalli*; the cyprinid *Labeo altivelis*; the tigerfish *Hydrocynus vittatus*; the mormyrid *Mormyrus longirostris*, *mormyrus anguilloides*; and the barbel *Clarius gariepinus*.



Figure 9 : Location of Artisanal fishing villages on Lake Kariba

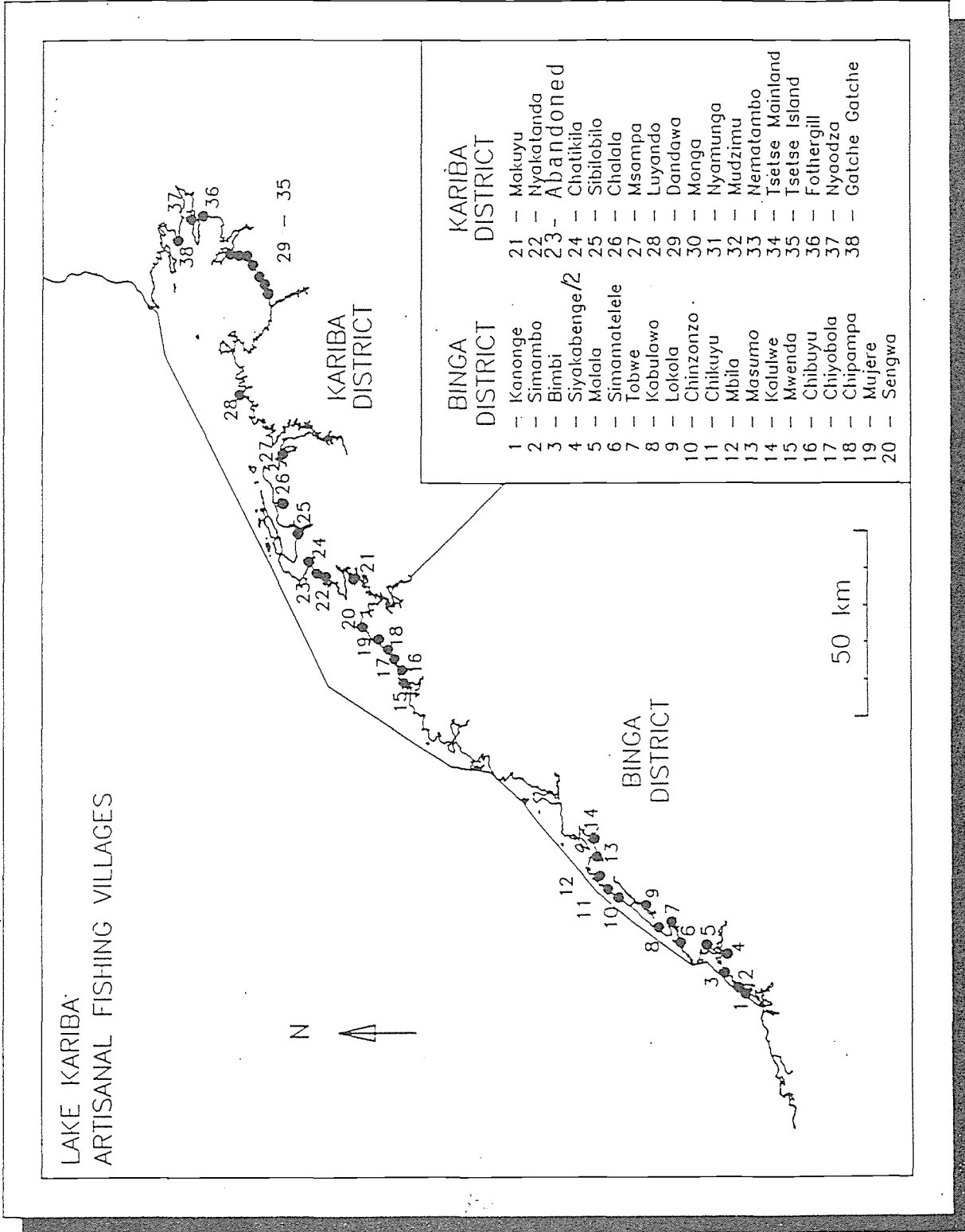


Table 8: Illustration of estimation of data in enumerated villages in Inshore Fishery

AREA	CAMP CODE	CAMP NAME	TOTAL SAMPLED CATCH in tonnes	TOTAL SAMPLED EFFORT (no of nets x 45m)	CPUE for sample (c/d) kg/100m	TOTAL FISHERMEN (FROM FRAME SURVEY 1993)	TOTAL SAMPLED DAYS	ESTIMATED TOTAL CATCH (C X 360) G	ESTIMATED TOTAL EFFORT (D X 360) G
A	B		C	D	E	F	G		
C2	6	Nematombo	0.99	15 840	6.26	38	10	35.70	570 240
	7	Nyamhunga	3.46	30 240	11.44	37	40	31.13	272 160
	10	Dandawa	15.08	276 975	5.44	79	110	49.35	906 464
C4	12	Musamba	13.83	116 190	11.90	68	60	82.96	697 140
	14	Sibilobilo	3.15	91 575	3.45	55	30	37.90	1 098 900
C5	19	Makuyu	5.32	117 720	4.52	31	50	38.30	847 584
	22	Mujere	6.10	56 790	10.74	58	30	73.19	681 480
C6	43	Kalulwe	2.73	82 305	3.32	38	70	14.04	423 283
C7	39	Simambo	-	-	-	-	-	-	-
TOTAL			128.28	787 635	16.13	426	830	446.15	5 497 250

The actual total catch for co-op returns in Areas C1 & C3 is 109.88t and estimated total catch for enumerated villages is 362.57 tonnes. The total estimate for the whole lake is  $362.57 \times \text{Total fishermen for the whole lake} + (\text{co-op Catches}) = 362.57 \times 1109 + 109.88 = 1115.11\text{t}$

Number of fishermen in the above villages 400

Table 9 : Estimated Catch and effort summary for enumerated villages, 1997

Village	Effort (metres)	Catch (tonnes)	CPUE (KG/100M)
Gache Gache co-op	340200	53.90	15.84
Nyaodza co-op	305 325	18.49	6.06
Nematombo	570 240	35.70	6.26
Nyamhunga	272 160	31.13	11.44
Dandawa	906 464	49.35	5.44
Luyando co-op	646 425	37.49	5.80
Musamba	697 140	82.96	11.90
Sibilobilo	1 098 900	37.90	3.45
Makuyu	847 584	38.30	4.52
Mujere	681 480	73.19	10.74
Kalulwe	423 283	14.04	3.32
Simambo	-	-	-
<b>Total</b>	<b>6 789 201</b>	<b>472.45</b>	<b>6.96</b>

All co-operatives in the above table are showing the actual sampled catch and effort data.

Table 10 : Estimated catch composition for 1997 based on enumerated villages

Species Name	Percentage %	Estimated catch in tonnes
<i>O. mortimeri</i>	17.96	65.10
<i>H. vittatus</i>	27.47	99.61
<i>C. gariepinus</i>	8.50	30.82
<i>M. longirostris</i>	13.74	49.83
<i>S. codringtonii</i>	6.92	25.10
<i>T. rendalli</i>	5.01	18.17
<i>L. altivelis</i>	6.52	23.62
<i>S. macrocephalus</i>	1.63	5.92
<i>M. anguilloides</i>	5.91	21.41
<i>D. Schenga</i>	2.20	7.99
<i>Others</i>	4.14	15.00
<b>Total</b>	<b>100</b>	<b>362.57</b>

Figure 10 : Percentage catch per area of total landings in the Inshore Fishery, 1997

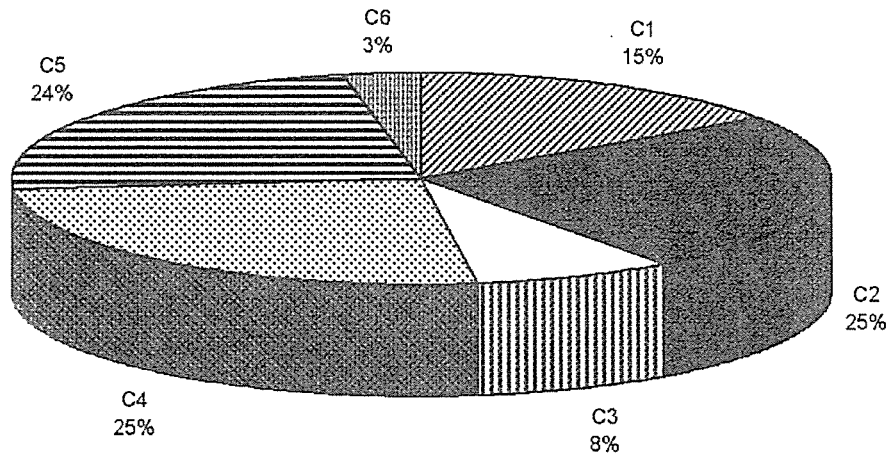


Figure 11 : Catch proportions of different species caught in the Inshore area

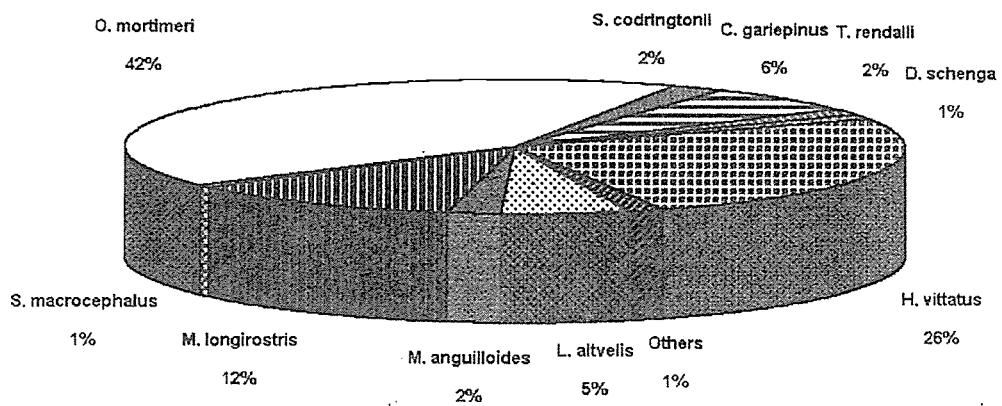


Figure 12: Species composition of Inshore landings (%kg) by area, 1997

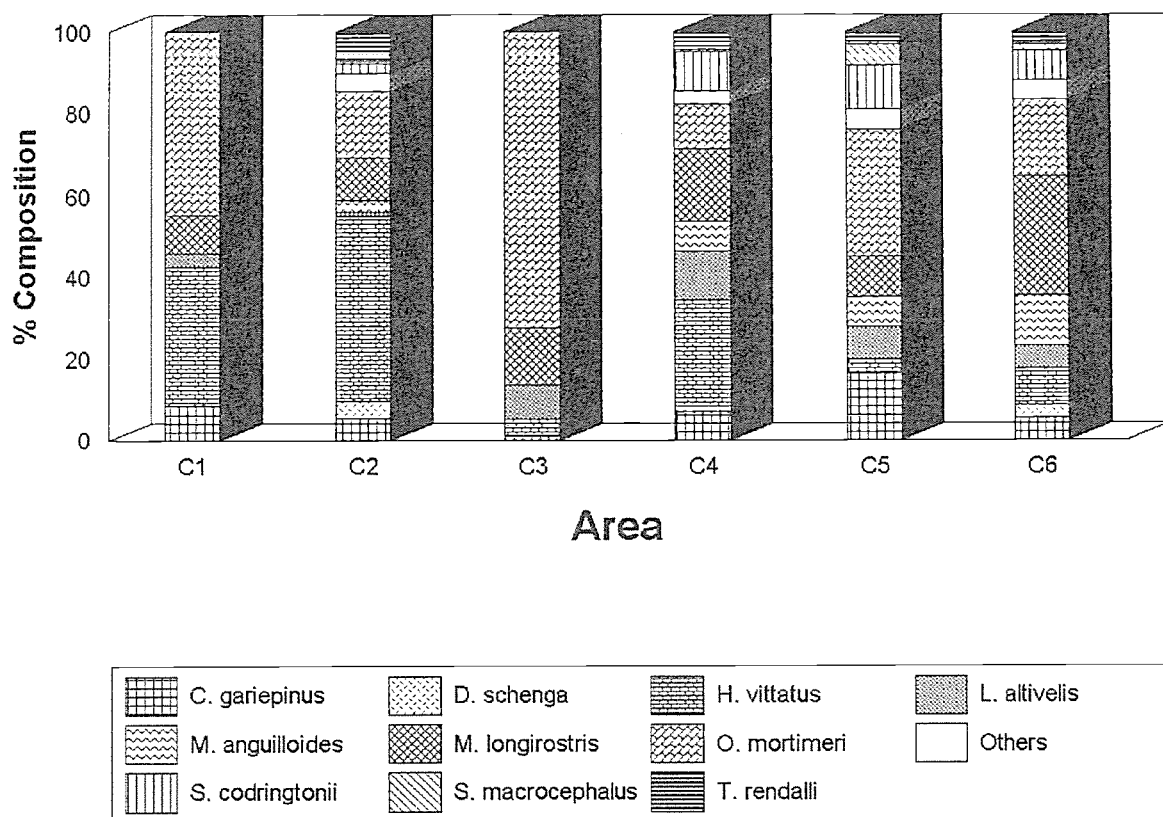


Figure 13: Catch and Effort Trends in the Inshore Fishery, 1983 -1997

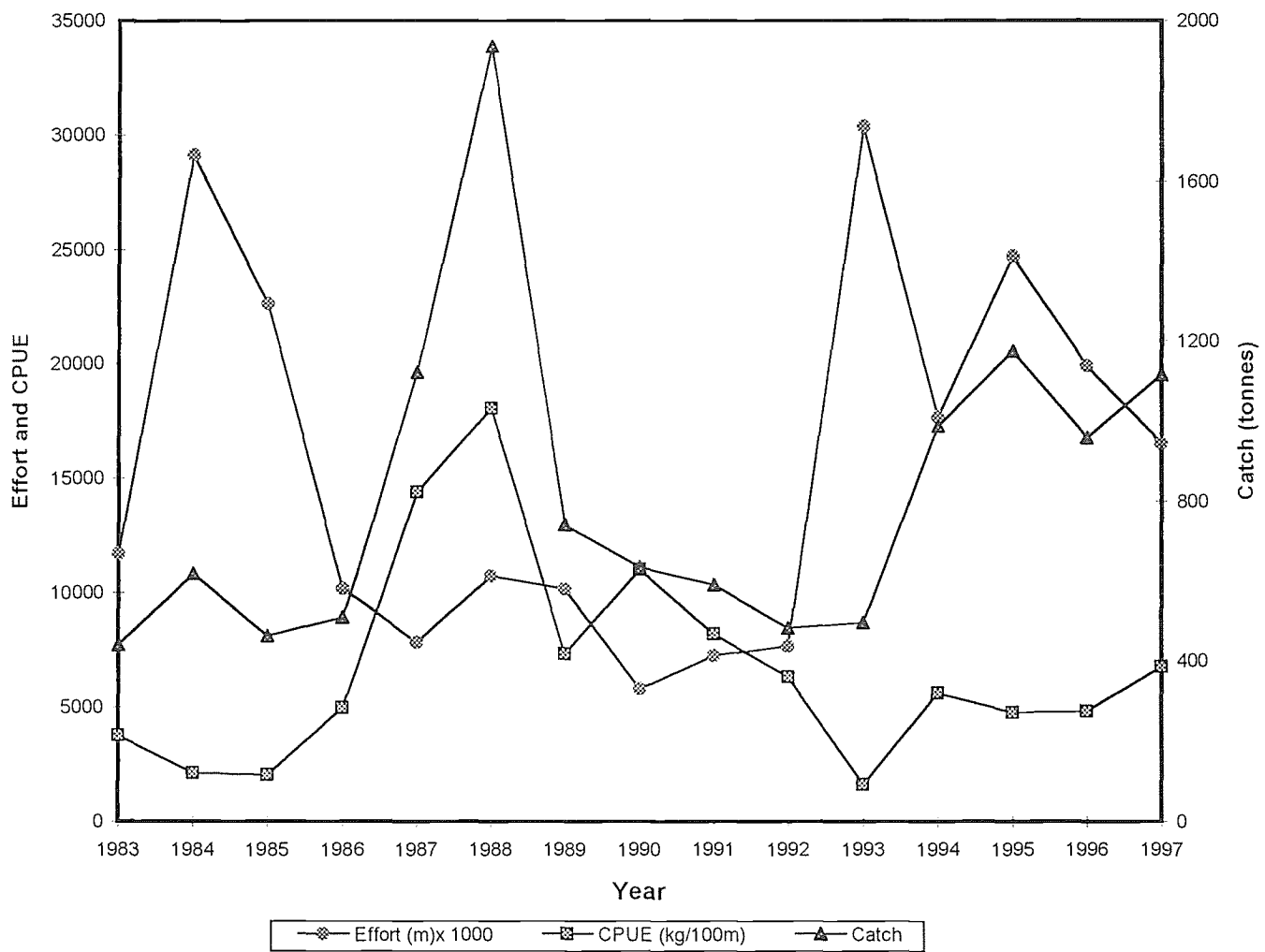


Table 11 : Catch and Effort for Gache Gache Co-operative Society, 1985-1997

Year	Total catch (tonnes)	Effort (metres)	CPUE (kg/100m)
1985	71.70	2591639	2.76
1986	69.46	1636286	4.24
1987	66.68	3884326	1.71
1988	56.41	1526070	3.69
1989	63.74	125206	5.09
1990	57.63	973573	5.91
1991	38.15	1143188	3.33
1992	27.37	821730	3.33
1993	37.56	669150	5.61
1994	26.82	852480	3.15
1995	43.97	665820	6.60
1996*	8.73	295200	2.96
1997	53.90	340200	15.84

\* Recorded up to May only.



Table 12 : Catch and Effort for Nyaodza Co-operative Society, 1987 to 1997

Year	Total catch (tonnes)	Effort (metres)	CPUE (kg/100m)
1987	44.31	2198277	2.01
1988	16.88	4312950	3.91
1989	21.21	591000	3.58
1990	28.92	449587	6.43
1991	31.19	393120	7.93
1992	16.77	594559	2.82
1993	14.29	609820	2.34
1994	21.28	505575	4.21
1995*	6.69	299700	2.23
1996	28.11	521055	5.39
1997	18.49	305325	6.06

\* Recorded up to May only.

Table 13 : Catch and Effort for Area C1, 1973 to 1997

Year	Effort (metres)	Total catch (tonnes)	CPUE (kg/100m)
1973	4245514	87.77	2.07
1974	4067000	171.12	4.21
1975	5823454	216.14	3.71
1976	4693325	184.89	3.94
1977	2585583	100.17	3.87
1978	4232470	178.57	4.22
1979	3604010	168.15	4.67
1980	3435068	97.37	2.83
1981	2919457	72.17	2.47
1982	2614889	86.99	3.33
1983	3553053	77.73	2.19
1984	4459223	51.55	1.16
1985	2690008	29.9	1.11
1986	1730367	26.11	1.51
1987	2005549	129.15	6.44
1988	2420193	143.35	5.92
1989	2236510	112.77	5.04
1990	1890355	112.55	5.95
1991	1958094	96.91	4.95
1992	1723204	62.91	3.65
1993	1278970	51.85	4.05
1994	1358055	48.1	3.54
1995	965520	50.65	5.25
1996	816255	36.85	4.51
1997	645525	72.39	11.21

Table 14 : Catch and Effort for Area C2, 1973 to 1996

Year	Effort (metres)	Total catch (tonnes)	CPUE (kg/100m)
1973	6054815	199.04	3.29
1974	8699007	277.67	3.19
1975	9012427	311.97	3.46
1976	6745253	20.79	3.42
1977	8235006	234.84	2.85
1978	9856397	340.51	3.45
1979	no records	no records	no records
1980	5433118	187.98	3.46
1981	6050384	168.6	2.79
1982	5436199	164.06	3.02
1983	2540788	170.18	6.7
1984	4703577	417.03	8.87
1985	3321195	226.01	6.81
1986	2671602	255.45	9.56
1987	323340	274.01	8.5
1988	2443409	242.02	9.91
1989	2691484	257.55	9.57
1990	1545481	244.46	15.82
1991	1794358	203.81	11.36
1992	1265580	87.64	6.92
1993	1760936	124.9	7.09
1994	1104300	73.22	6.63
1995	1798701	114.20	6.35
1996	2383055	88.20	3.70
1997	1748864	116.18	6.64

Table 15 : Catch and Effort for Area C3, 1973 to 1997

Year	Effort (metres)	Total catch (tonnes)	CPUE (kg/100m)
1973	3456725	97.18	2.81
1974	3473470	124.48	3.58
1975	3389575	78.13	2.3
1976	3079440	80.2	2.6
1977	2489851	75.35	3.03
1978	2616114	120	4.59
1979	2000135	119.73	5.99
1980	2452951	101.11	4.12
1981	2091404	66.77	3.19
1982	1642321	50.4	3.06
1983	1530166	37.43	2.44
1984	11503152	21.85	0.19
1985	13333335	16.3	1.22
1986	1180508	22.73	1.93
1987	599099	26.39	4.41
1988	2256450	193.08	8.56
1989	384749	34.93	9.07
1990	510048	30.63	6.01
1991	444296	35.35	7.73
1992	475476	31.83	6.69
1993	332317	20.74	6.24
1994	533475	14.5	2.69
1995*	271575	8.60	3.17
1996	325125	17.71	5.45
1997	646425	37.49	5.80

\* Recorded up to July only. 1996 - landings recorded up to August only.

Table 16 : Catch and Effort for Area C4, 1973 to 1997

Year	Effort (metres)	Total catch (tonnes)	CPUE (kg/100m)
1973	1551514	77.15	4.97
1974	1535458	84.21	5.48
1975	736212	58.29	7.92
1976	429982	31.92	7.42
1977	no records	no records	no records
1978	1291114	63.86	4.95
1979	no records	no records	no records
1980	1090772	66.59	6.1
1981	2063793	99.72	4.83
1982	1928563	78.58	4.07
1983	1001906	71.48	7.13
1984	1058426	54.03	5.1
1985	701275	110.01	15.69
1986	619018	709.28	17.65
1987	958678	143.52	14.97
1988	2256450	193.09	8.56
1989	1587782	198.33	12.49
1990	1108323	159.83	14.42
1991	1690667	152.98	9.04
1992	1594995	139.59	8.75
1993	1399595	159	11.36
1994	1768961	124.1	7.02
1995	1743201	157.34	9.03
1996	1725624	116.54	6.75
1997	1796040	120.86	6.73

Table 17 : Catch and Effort for Area C5, 1973 to 1997

Year	Effort (metres)	Total catch (tonnes)	CPUE (kg/100m)
1973	3840473	94	2.45
1974	3961230	107	2.7
1975	no records	no records	no records
1976	1094730	70	6.39
1977	no records	no records	no records
1978	no records	no records	no records
1979	no records	no records	no records
1980	574756	100	17.4
1981	21224842	177	8.33
1982	2131082	106	4.97
1983	3078396	83	2.7
1984	7385335	75	1.02
1985	2572756	80	3.11
1986	3985620	94	2.36
1987	1006188	41	4.07
1988	135117	42	3.12
1989	3078394	112	3.64
1990	718900	88	12.24
1991	1112908	78	7.01
1992	2285092	140.98	6.17
1993	935972	96.9	10.35
1994	1512998	91.73	6.06
1995	3299535	92.13	2.79
1996	1512594	69.47	4.50
1997	1529064	111.49	7.29

Table 18 : Catch and Effort for Area C6 and C7, 1973 to 1997

Year	Effort (metres)	Total catch (tonnes)	CPUE (kg/100m)
1989	176021	25.54	14.51
1990	no records	no records	no records
1991	219490	22.71	10.35
1992	306604	18.99	6.19
1993	953951	42.1	4.41
1994	1170612	36.75	3.14
1995	1431247	29.56	2.07
1996*	511110	15.13	3.00
1997	423283	14.04	3.32

\* Area C6 was recorded & C7 was not.

