

Moreton, F.C., McCormick, M. and Muir, K.W. (2007) *Insular cortex hypoperfusion and acute phase blood glucose after stroke: a CT perfusion study*. Stroke, 38 (2). pp. 407-410. ISSN 0039-2499

<http://eprints.gla.ac.uk/21767/>

Deposited on: 19 January 2012



Insular Cortex Hypoperfusion and Acute Phase Blood Glucose After Stroke : A CT Perfusion Study

Fiona C. Moreton, Michael McCormick and Keith W Muir

Stroke 2007, 38:407-410: originally published online December 28, 2006

doi: 10.1161/01.STR.0000254487.73282.4d

Stroke is published by the American Heart Association, 7272 Greenville Avenue, Dallas, TX 75214

Copyright © 2006 American Heart Association. All rights reserved. Print ISSN: 0039-2499. Online

ISSN: 1524-4628

The online version of this article, along with updated information and services, is
located on the World Wide Web at:

<http://stroke.ahajournals.org/content/38/2/407>

Subscriptions: Information about subscribing to *Stroke* is online at

<http://stroke.ahajournals.org/subscriptions/>

Permissions: Permissions & Rights Desk, Lippincott Williams & Wilkins, a division of Wolters
Kluwer Health, 351 West Camden Street, Baltimore, MD 21202-2436. Phone: 410-528-4050. Fax:
410-528-8550. E-mail:

journalpermissions@lww.com

Reprints: Information about reprints can be found online at

<http://www.lww.com/reprints>

Insular Cortex Hypoperfusion and Acute Phase Blood Glucose After Stroke

A CT Perfusion Study

Fiona C. Moreton, BSc; Michael McCormick, MRCP; Keith W Muir, MD, FRCP

Background and Purpose—Insular cortex ischemia is proposed to mediate a sympathetic stimulus that leads to acute hyperglycemia after stroke.

Methods—We retrospectively analyzed insular perfusion on perfusion CT (median 180 minutes after onset) in 35 patients.

Results—We found no association of hypoperfusion (relative cerebral blood flow <0.51) with early (<6 hours) or delayed (<72 hours) hyperglycemia, or hemispheric lateralization.

Conclusions—Insular cortex hypoperfusion <6 hours after stroke onset was not associated with hyperglycemia. (*Stroke*. 2007;38:407-410.)

Key Words: blood glucose ■ cerebral blood flow ■ hyperglycemia ■ insula ■ perfusion CT

Poststroke hyperglycemia (PSH) affects 40% to 60% of patients and independently predicts poor outcome.¹ Multiple adverse pathophysiological consequences of hyperglycemia may impair penumbral survival.^{2,3} It is proposed that insular cortex ischemia may specifically mediate PSH by releasing tonic inhibition of sympathetic centers,⁴ and that this effect differs between hemispheres.⁵ However, anatomical infarct location is inconsistently associated with PSH in clinical studies.^{6,7}

We sought associations of hyperglycemia and insular cortex hypoperfusion on perfusion CT in acute stroke patients. We hypothesized that insular hypoperfusion was associated with PSH, and that the association differed between hemispheres.

Methods

Clinical and imaging studies of all acute ischemic stroke patients undergoing perfusion CT routinely over 42 months were reviewed. The Local Research Ethics Committee approved data analysis without requiring individual consent.

Exclusion criteria were blood glucose not recorded within 6 hours of onset or perfusion CT scans uninterpretable, eg, because of motion, established insular infarction, or omission of a slice through the basal ganglia.

Clinical findings reviewed included whole blood and capillary glucose concentrations, National Institutes of Health Stroke Scale (NIHSS) scores, demographics, and Oxfordshire Community Stroke Project classification. Hyperglycemia was defined as blood glucose ≥ 7.0 mmol/L. Both admission glucose concentration ($[Glu]_{Ad}$) and maximal documented blood glucose within 72 hours ($[Glu]_{max}$) were recorded.

Dynamic perfusion CT was performed on a Philips MX8000 scanner using a previously described protocol⁸ and analyzed using MxView software (Philips Medical Systems), which calculates perfusion parameters by the maximum slope method.

Regions of interest were drawn manually to define anterior and posterior insular cortex gray matter of each hemisphere by a single investigator blind to glucose results. The average of 3 readings from each region of interest was taken. Cerebral blood flow, time to peak, and cerebral blood volume were expressed relative to the contralateral regions of interest. Hypoperfusion was primarily defined as relative cerebral blood flow ≤ 0.50 . For exploratory analyses, time to peak delay >6 seconds or relative cerebral blood volume <0.6 were used.

For blood glucose as a continuous variable, independent t test, analysis of variance, and general linear modeling were used. For blood glucose as a categorical variable, Fisher's exact test and multivariate logistic regression analyses were used. For NIHSS scores, the Mann Whitney U test was used. Values are quoted as mean (\pm SD) unless otherwise stated. Significance was taken at $P<0.05$ (2-tailed).

Results

Thirty-five subjects fulfilled study criteria (Table). Subjects were divided into groups with normal or hypoperfusion of the insula (anterior or posterior portions) by relative cerebral blood flow criteria.

$[Glu]_{max}$ was significantly higher than $[Glu]_{Ad}$ (7.73 versus 6.49 mmol/L, $P=0.001$, paired t test). Glucose increase from admission was documented in 18/35 subjects (11/16 normal perfusion, 7/19 hypoperfusion; $P=0.092$; Fisher's exact test).

Insular hypoperfusion was associated with nonsignificantly higher $[Glu]_{Ad}$ and $[Glu]_{max}$. Admission hyperglycemia was present in 9 of 23 subjects with left and 2 of 12 subjects with right hemisphere hypoperfusion, and within 72 hours in 12 of 23 subjects with left and 6 of 12 with right hemisphere ischemia.

Anterior insular hypoperfusion was present in 18 subjects, 10 of whom also had posterior insular hypoperfusion. Only one subject had isolated posterior insular hypoperfusion.

Received June 22, 2006; accepted September 18, 2006.

From Division of Clinical Neurosciences, University of Glasgow, Institute of Neurological Sciences, Southern General Hospital, Glasgow, Scotland, UK.

Correspondence to Dr Keith Muir, Division of Clinical Neurosciences, University of Glasgow, Institute of Neurological Sciences, Southern General Hospital, Glasgow G51 4TF, Scotland, UK. E-mail k.muir@clinmed.gla.ac.uk

© 2007 American Heart Association, Inc.

Stroke is available at <http://www.strokeaha.org>

DOI: 10.1161/01.STR.0000254487.73282.4d

Patient Characteristics

	All Patients	Insular Cortex	
		rCBF>0.50	rCBF<0.51
No.	35	16	19
Age, mean±SD, y	68±13	69±13	67±14
Male, n (%)	17 (49%)	7 (44%)	10 (53%)
Stroke hemisphere, left:right	23:12 (66%:34%)	12:4 (75%:25%)	11:8 (58%:42%)
OCSF classification, n (%)			
TACS	18 (51%)	7 (44%)	11 (58%)
PACS	15 (43%)	7 (44%)	8 (42%)
LACS	2 (6%)	2 (12%)	0 (0%)
Blood glucose, mean±SD, mmol/L			
Admission	6.5±1.3	6.24±1.43	6.71±1.21
Highest documented within 72 hours	7.73±2.38	7.69±2.91	7.76±1.92
Admission NIHSS, median [IQR]	15 [11,19]	13 [10, 20]	16 [12.5, 18.5]
Median time to perfusion CT [IQR], min	170 [150, 210]	167.5 [140, 185]	170 [165, 220]
Median 24 hours NIHSS [IQR]	7 [5, 16.5]	7 [5, 15]	7 [5, 17]
Thrombolytic therapy, n (%)	20 (57%)	11 (69%)	9 (47%)
3-Month modified Rankin scale, n (%)			
0–2	11 (34%)	4 (29%)	7 (39%)
3–5	12 (38%)	5 (36%)	7 (39%)
6	9 (28%)	5 (36%)	4 (22%)
Risk factors, n (%)			
Diabetes	2 (6%)	1 (6%)	1 (5%)
Hypertension	24 (71%)	12 (75%)	12 (67%)
Previous stroke	9 (27%)	7 (44%)	2 (11%)
Ischemic heart disease	10 (29%)	4 (25%)	6 (33%)
Previous TIA	9 (27%)	5 (31%)	4 (22%)
Hypercholesterolemia	11 (32%)	6 (38%)	5 (28%)
Present smoker	8 (24%)	3 (19%)	5 (28%)
Ex-smoker	7 (21%)	4 (25%)	3 (19%)
Admission medication, n (%)			
Insulin	1 (3%)	0 (0)	1 (6%)
Hypoglycemics	1 (3%)	1 (7%)	0 (0%)
Antihypertensives	22 (67%)	11 (73%)	11 (61%)

IQR indicates interquartile range; LACS, lacunar syndrome; OCSF, Oxfordshire Community Stroke Project; PACS, partial anterior circulation syndrome; rCBF, relative cerebral blood flow; SD, standard deviation; TACS, total anterior circulation syndrome; TIA, transient ischemic attack.

Analyzing $[Glu]_{Ad}$ (Figure 1A) and $[Glu]_{max}$ (Figure 1B) by insular hypoperfusion and lateralization by 2-way ANOVA, including thrombolytic therapy as a random factor and NIHSS as a covariate, there was no significant effect of hypoperfusion or lateralization, and no significant interaction between factors.

Binary logistic regression including insular hypoperfusion (anterior or posterior), hypoperfusion of anterior and posterior insular cortices individually, NIHSS, and lateralization found no significant predictors of admission or 72-hour peak hyperglycemia.

Univariate general linear modeling of $[Glu]_{Ad}$ or $[Glu]_{max}$ including the same terms found no significant associations. Exploratory analyses of relative cerebral blood volume or time to peak delay as alternative perfusion indices were also nonsignificant. After adjustment for NIHSS, mean $[Glu]_{Ad}$ was higher with hypoperfusion of

left hemisphere lesions involving the anterior insula (Figure 2A, 2B). Findings were similar for $[Glu]_{max}$.

Discussion

In patients imaged a median 3 hours after onset, we found no relationship between insular cortex hypoperfusion and hyperglycemia, either on admission or within the first 72 hours. There was no difference between hemispheres. The absence of significant findings was consistent across several approaches to analysis.

While different cardiovascular effects of right and left brain hypoperfusion are seen in rodents,⁹ clinical reports disagree both on lateralization and the nature of any dysrhythmia.^{10,11} Left insular stimulation causes bradycardia and hypotension, with opposite effects on the right;¹² however, lesion studies are limited by the rarity of isolated insular infarction.¹³

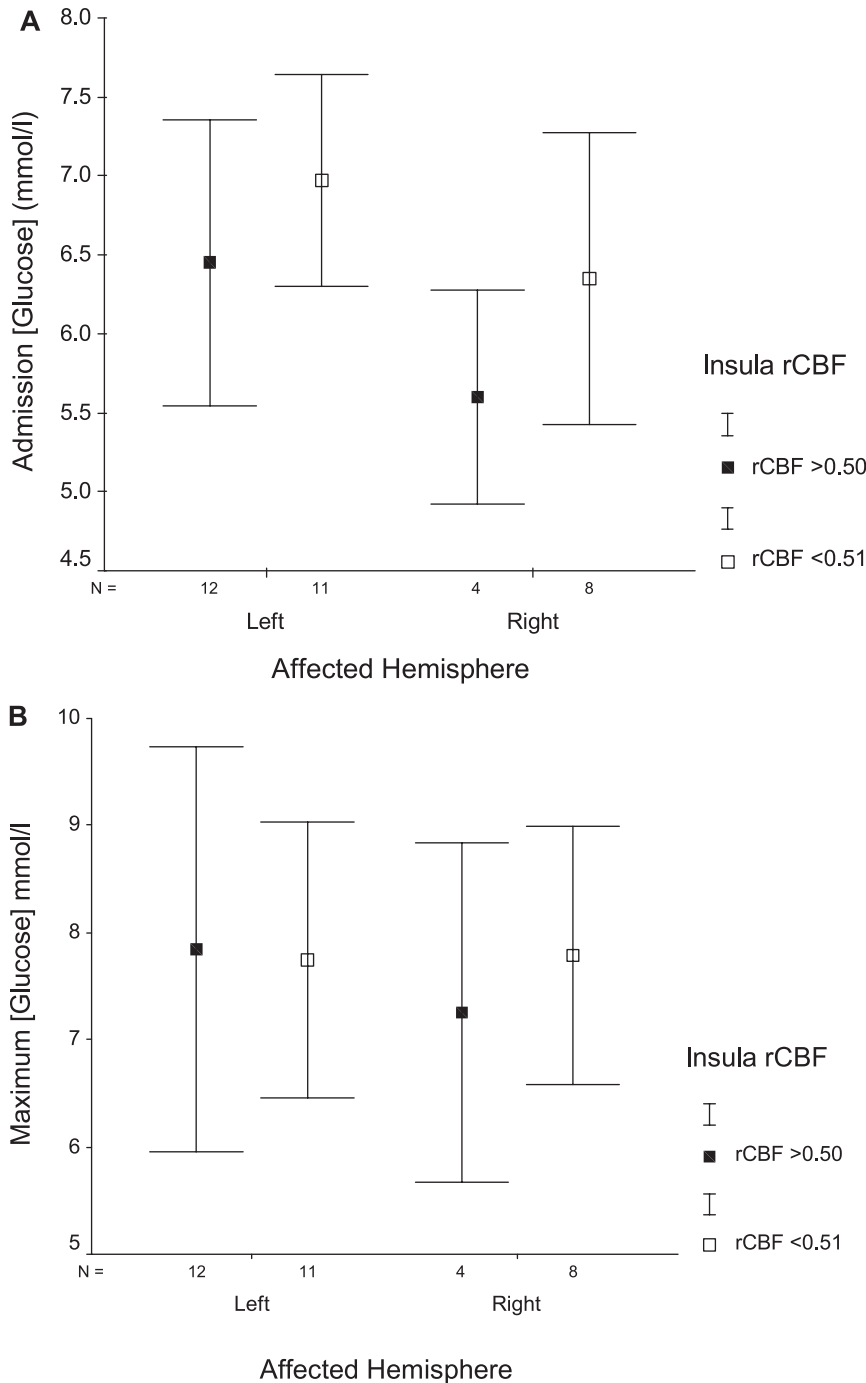


Figure 1. Insular hypoperfusion in right and left hemisphere lesions, (A) $[Glu]_{Ad}$, and (B) $[Glu]_{max}$.

Allport et al reported that insular infarction on diffusion-weighted imaging at median of 13 hours after stroke predicted PSH,⁴ independent of lesion volume, NIHSS, glycosylated hemoglobin concentration, and history of diabetes. There are several explanations for our differing findings. First, diffusion-weighted imaging at 13 hours almost certainly indicates infarction, whereas hypoperfusion at 3 hours may be reversible, particularly with a high proportion of our patients receiving thrombolysis. While the severity of ischemia might be less than required to produce definite diffusion-weighted imaging lesions, indices of more severe hypoperfusion (relative cerebral blood volume <0.61 or time to peak delay >6 seconds) were also nonsignificant. Further, Christensen found

no relationship of CT-defined insular infarction with mean blood glucose in 179 patients within 6 hours of onset.⁷

Different autonomic effects of anterior and posterior insular cortical ischemia are proposed. Allport identified few subjects with anterior insular lesions, whereas we found the opposite. However, our exploratory analyses indicated higher admission glucose with left anterior insular hypoperfusion, whereas previous studies suggest exactly the opposite.

Limitations of this study may reduce the chance of finding a relationship. Accurate delineation of the insular cortex is difficult because of its small anatomical size, liability to movement artifact with dynamic perfusion CT, and signal averaging artifacts. To minimize variability, the average value of multiple readings, ob-

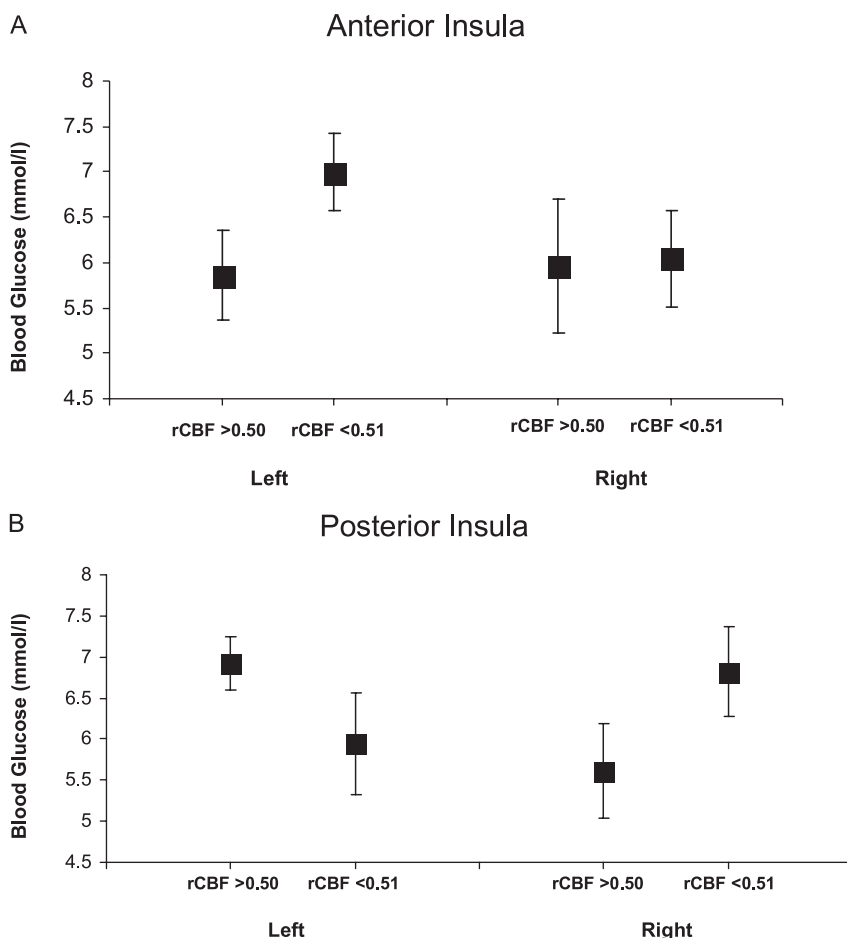


Figure 2. Mean \pm SEM $[Glu]_{ad}$ in right and left hemisphere strokes with and without hypoperfusion of (A) anterior and (B) posterior insular cortex, adjusted for stroke severity.

tained by a single observer at different times, was taken. All regions of interest were defined on the basis of the maximal intensity projection map of the perfusion CT to maximize tissue contrast, and without reference to the perfusion maps.

This study was retrospective, and routinely documented results may underestimate PSH incidence.³ It is possible that the study size was inadequate; nonetheless, the sample size was greater than for previous studies that have reported an association.

In conclusion, we were unable to confirm an association of insular cortex hypoperfusion with poststroke hyperglycemia.

Acknowledgments

We thank Dr Evelyn Teasdale and neuroradiographers for their support.

Sources of Funding

This project was supported by a Health Foundation Student Award Fellowship (F.M.). A Scottish Chief Scientist's Office Programme Support Grant supported perfusion CT scans of some patients. Dr McCormick is supported by the Stroke Association, UK (TSA 03/06).

Disclosures

None.

References

- Capes SE, Hunt D, Malmberg K, Pathak P, Gerstein HC. Stress hyperglycemia and prognosis of stroke in nondiabetic and diabetic patients: a systematic overview. *Stroke*. 2001;32:2426–2432.
- Parsons MW, Barber PA, Desmond PM, Baird TA, Darby DG, Byrnes G, Tress BM, Davis SM. Acute hyperglycemia adversely affects stroke outcome: a magnetic resonance imaging and spectroscopy study. *Ann Neurol*. 2002;52:20–28.
- Baird TA, Parsons MW, Phan T, Butcher KS, Desmond PM, Tress BM, Colman PG, Chambers BR, Davis SM. Persistent poststroke hyperglycemia is independently associated with infarct expansion and worse clinical outcome. *Stroke*. 2003;34:2208–2214.
- Allport LE, Butcher KS, Baird TA, MacGregor L, Desmond PM, Tress BM, Colman P, Davis SM. Insular cortical ischemia is independently associated with acute stress hyperglycemia. *Stroke*. 2004;35:1886–1891.
- Sander D, Winbeck K, Klingelhofer J, Etgen T, Conrad B. Prognostic relevance of pathological sympathetic activation after acute thromboembolic stroke. *Neurology*. 2001;57:833–838.
- Kiers L, Davis SM, Larkins R, Hopper J, Tress B, Rossiter SC, Carlin J, Ratnaik S. Stroke topography and outcome in relation to hyperglycaemia and diabetes. *J Neurol Neurosurg Psych*. 1992;55:263–270.
- Christensen H. Insular lesions and hyperglycemia in acute stroke revisited. *Stroke*. 2005;36:229–230.
- Muir KW, Halbert HM, Baird TA, McCormick M, Teasdale E. Visual evaluation of perfusion computed tomography in acute stroke accurately estimates infarct volume and tissue viability. *J Neurol Neurosurg Psych*. 2006;77:334–339.
- Hachinski VC, Oppenheimer SM, Wilson JX, Guiraudon C, Cechetto DF. Asymmetry of sympathetic consequences of experimental stroke. *Arch Neurol*. 1992;49:697–702.
- Colivicchi F, Bassi A, Santini M, Caltagirone C. Cardiac autonomic derangement and arrhythmias in right-sided stroke with insular involvement. *Stroke*. 2004;35:2094–2098.
- Laowattana S, Zeger SL, Lima JA, Goodman SN, Wittstein IS, Oppenheimer SM. Left insular stroke is associated with adverse cardiac outcome. *Neurology*. 2006;66:477–483.
- Oppenheimer SM, Gelb A, Girvin JP, Hachinski VC. Cardiovascular effects of human insular cortex stimulation. *Neurology*. 1992;42:1727–1732.
- Cereda C, Ghika J, Maeder P, Bogousslavsky J. Strokes restricted to the insular cortex. *Neurology*. 2002;59:1950–1955.