



Queensland University of Technology
Brisbane Australia

This is the author's version of a work that was submitted/accepted for publication in the following source:

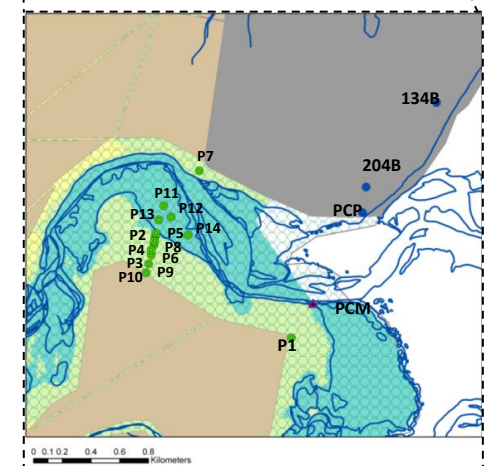
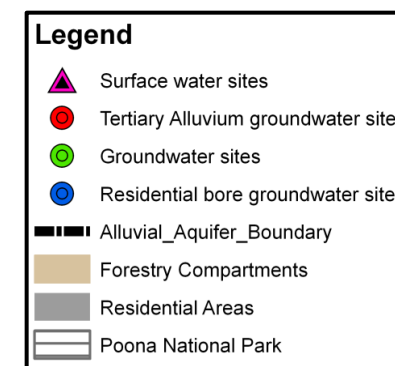
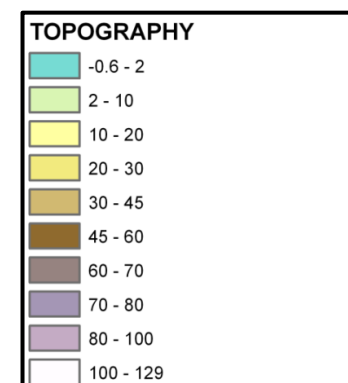
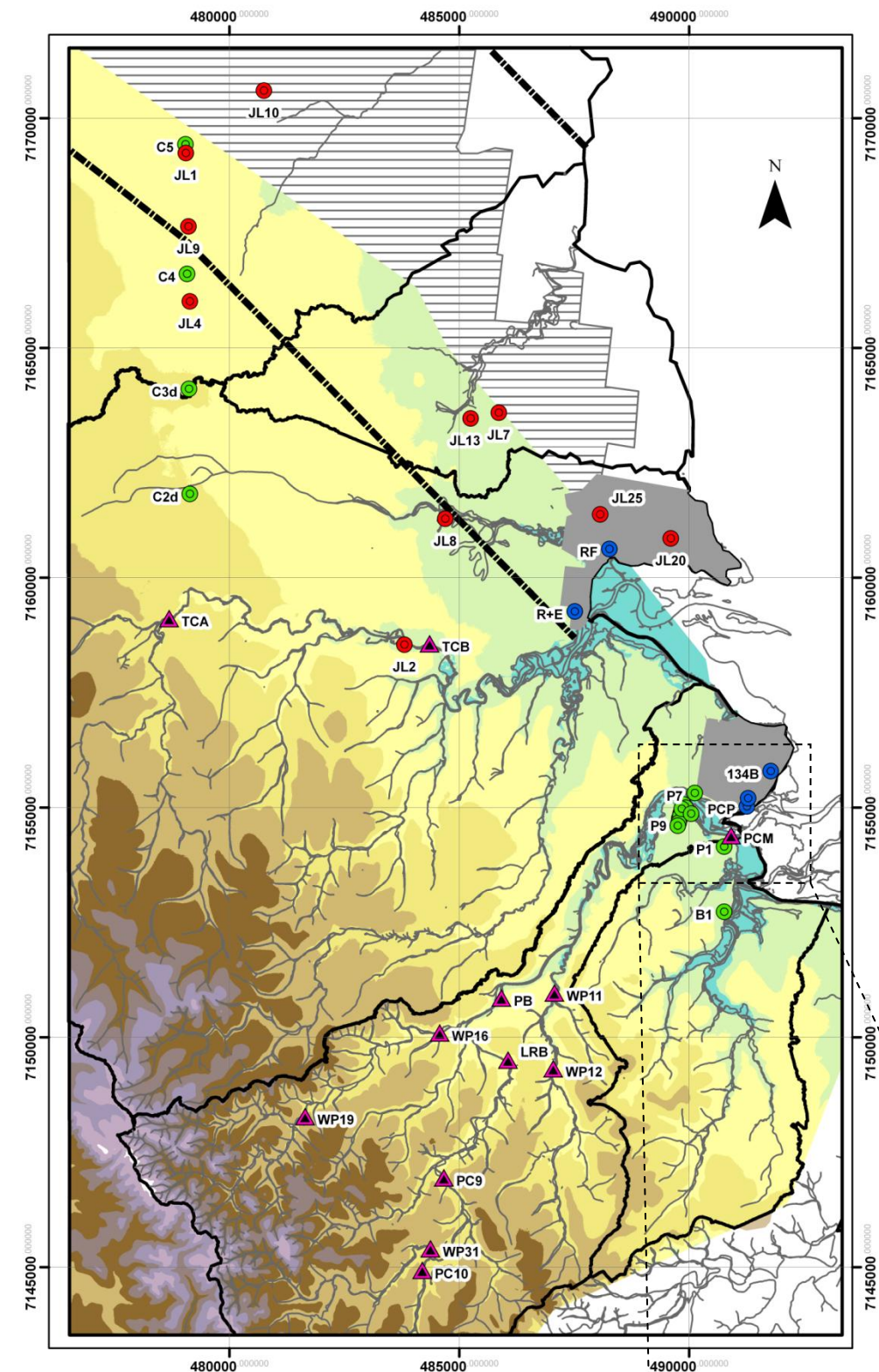
[Larsen, Genevieve R.](#) (2012) *Determination of coastal ground and surface water processes and character by use of hydrochemistry and stable isotopes, Fraser Coast, Queensland*. PhD by Publication, Queensland University of Technology.

This file was downloaded from: <http://eprints.qut.edu.au/53334/>

Notice: *Changes introduced as a result of publishing processes such as copy-editing and formatting may not be reflected in this document. For a definitive version of this work, please refer to the published source:*

APPENDIX E

Map of data collection sites and topography



DATA COLLECTION SITES AND TOPOGRAPHY
 Inset shows groundwater sites near the mouth of Poona Creek