

# Time-Frequency Feature Extraction of Newborn EEG Seizure Using SVD-Based Techniques

**Hamid Hassanpour**

*Lab of Signal Processing Research, Queensland University of Technology, GPO Box 2434, Brisbane, QLD 4001, Australia*  
Email: [h.hassanpour@qut.edu.au](mailto:h.hassanpour@qut.edu.au)

**Mostefa Mesbah**

*Lab of Signal Processing Research, Queensland University of Technology, GPO Box 2434, Brisbane, QLD 4001, Australia*  
Email: [m.mesbah@qut.edu.au](mailto:m.mesbah@qut.edu.au)

**Boualem Boashash**

*Lab of Signal Processing Research, Queensland University of Technology, GPO Box 2434, Brisbane, QLD 4001, Australia*  
Email: [b.boashash@qut.edu.au](mailto:b.boashash@qut.edu.au)

Received 27 August 2003; Revised 17 May 2004

The nonstationary and multicomponent nature of newborn EEG seizures tends to increase the complexity of the seizure detection problem. In dealing with this type of problems, time-frequency-based techniques were shown to outperform classical techniques. This paper presents a new time-frequency-based EEG seizure detection technique. The technique uses an estimate of the distribution function of the singular vectors associated with the time-frequency distribution of an EEG epoch to characterise the patterns embedded in the signal. The estimated distribution functions related to seizure and nonseizure epochs were used to train a neural network to discriminate between seizure and nonseizure patterns.

**Keywords and phrases:** detection, time-frequency distribution, singular value decomposition, probability distribution function.

## 1. INTRODUCTION

Clinical signs of central nervous system dysfunctions in the neonate are often revealed by seizures which are the results of synchronous discharge of a large number of neurons [1]. Seizures increase the risk of impaired neurological and developmental functioning in neonatal period and also increase the risk of death [2].

Clinical manifestations of seizure in adults such as body jerking, repetitive winking, or fluttering of eyelids are well defined and easily recognisable. However, in newborns, the clinical signs are not as clear and can be missed without constant and close supervision. In neonates, the brain function is constantly changing as its neurophysiology matures [3, 4]. This emphasises the nonstationary behaviour of the electroencephalogram (EEG) in neonates [5, 6]. In addition, the frequency spectrum of the background EEG largely overlaps with the seizure one [7]. This behaviour makes the task of analysing newborn EEG signal a complex one for both neurologists and signal analysts. To overcome this complexity, time-frequency- (TF) based techniques were introduced.

Neonatal EEG seizures have signatures in both low frequency (as low as 0.5 Hz) [8] and high frequency (higher than 70 Hz) [9]. This study concentrates on using the low-frequency signatures for seizure detection. Detection of EEG seizures using the low-frequency signature requires a lower number of data samples, hence the computational time is reduced. To remove the high-frequency activity, the signal is filtered by a lowpass filter with a cutoff frequency 10 Hz. The filtered signal is then segmented into 30-second epochs. By choosing 30-second epochs we are not assuming that the minimum seizure length is 30 seconds. Indeed, in the presented technique, no limitation for the minimum length of seizure was assumed. However, the longer the duration of EEG epochs, the better is the discrimination between seizures and nonseizures. Choosing 30 seconds for the duration of epochs is found to be adequate for the feature extraction process and also alleviates the computation task. Once the EEG is segmented, the epochs are mapped into the TF domain. To extract the features of the seizure, we use a singular-value-decomposition- (SVD) based technique applied to the TF distribution (TFD) of the EEG epochs. Singular vectors

(SVs) of a matrix are the span bases of the matrix, and their importance in the composition of the matrix is reflected by the related singular values. Since SVs are orthonormal [10], their squared elements can be treated as probability density function (PDF) [11]. These PDFs are used in the process of seizure feature extraction in this paper.

## 2. EEG DATA ACQUISITION

EEG data acquisition was performed on the newborn, ages ranging between two days and two weeks, at the Royal Women's Hospital, Brisbane, Australia. The electrodes were placed on the scalp according to the 10–20 International System of Electrode Placement. The data were recorded on 20 channels using Medelec (Oxford Instruments, UK) software/hardware environment. The sampling frequency was set to 256 Hz. The seizure activities on the recordings were visually labeled by a neurologist from the Neurosciences Department at the Royal Children's Hospital.

## 3. TF-BASED FEATURE EXTRACTION

In analysing nonstationary and multicomponent signals, the TF-based techniques have been shown to outperform classical techniques based on either time or frequency domains [12]. SVs of the matrix associated with the TFD of a signal can be used to characterise the signal. By using the SVD technique, the SVs and their importance in the composition of the matrix (singular values) are computed.

### 3.1. TFD of signals

TFDs are powerful tools for extracting features of the patterns embedded in a nonstationary signal [13]. The TFD of a signal is a joint representation in both time and frequency domains. For a given signal  $x(t)$ , the TFD that belongs to the quadratic class can be expressed as [14]

$$\rho_z(t, f) = \int_{-\infty}^{\infty} \int_{-\infty}^{\infty} \int_{-\infty}^{\infty} e^{j2\pi\nu(u-t)} g(\nu, \tau) z\left(u + \frac{\tau}{2}\right) z^* \times \left(u - \frac{\tau}{2}\right) e^{-j2\pi f\tau} d\nu du d\tau, \quad (1)$$

where  $z(t)$  is the analytic signal associated with  $x(t)$ , and  $g(\nu, \tau)$  is a 2-dimensional kernel that determines the characteristics of the TFD. For example, by setting  $g(\nu, \tau) = 1$ , we get the Wigner-Ville distribution (WVD), and with  $g(\nu, \tau) = |\tau|^\beta |\Gamma(\beta + j\pi\nu)|^2 / 2^{1-2\beta} \Gamma(2\beta)$ , the equation represents the B-distribution [15]. In the B-distribution,  $\Gamma(\cdot)$  represents the Gamma function and  $\beta$  is a smoothing parameter.

The bilinear operation on the signal in (1) may produce spurious components, cross-terms, in the TFD when the signal is a multicomponent or a nonlinear FM [16]. The reduced interference distributions (RIDs), such as the B-distribution, have been introduced to reduce the effect of cross-terms on the TFD of a signal [15]. Different TF kernels are valuable under certain conditions, hence their suitability

is application dependent. It has been shown that the B-distribution is very suitable, in terms of resolution and cross-terms, for analysing the low-frequency activities in the EEG signal [8]. A TFD with high resolution provides a better insight in the analysis of signals, especially when the signals are multicomponent and the components are close to each other.

### 3.2. SVD

The SVD method has been a valuable tool in signal processing and statistical data analysis. A SVD of an  $M \times N$  matrix  $X$ , representing the TFD of the signal  $x$ , is given by

$$X = U\Sigma V^T, \quad (2)$$

where  $U(M \times M)$  and  $V(N \times N)$  are orthonormal matrices, and  $\Sigma$  is an  $M \times N$  diagonal matrix of singular values ( $\sigma_{ij} = 0$  if  $i \neq j$  and  $\sigma_{11} \geq \sigma_{22} \geq \dots \geq 0$ ). The columns of the orthonormal matrices  $U$  and  $V$  are called the left and right SVs, respectively. An important property of  $U$  and  $V$  is that they are mutually orthogonal [10]. The singular values ( $\sigma_{ii}$ ) represent the importance of individual SVs in the composition of the matrix. In other words, SVs corresponding to the larger singular values have more information about the structure of patterns embedded in the matrix than the other SVs.

### 3.3. Using SVs to characterise signal in the TF domain

In the analysis of signals in the TF domain using SVD, the type of TF distribution is important. Indeed, it is desirable that the TFD has both less cross-terms and high resolution. To satisfy these specifications, we use the B-distribution [17], which has been shown to give good performance for newborn EEG signals [8].

Previous researches have mostly concentrated on features based only on the singular values of the TFD of the signals [18, 19]. By themselves, singular values do not carry significant information about the behaviour of patterns embedded in the matrix. In other words, they are not suitable features for classification purposes [11, 20].

To find the characteristics of a signal in the TF domain using the SVD technique, we propose to use the right and left SVs corresponding to the largest singular values. The reason is that the right and left SVs contain the time and frequency domain information of the signal, respectively [11]. In addition, SVs related to the largest singular values have more information about the structure of the signal. Consequently, if the structure of signals are different for dissimilar classes, using SVs related to the largest singular values is more suitable for classification [21]. However, SVs corresponding to the lowest singular values would be more appropriate if the structure of different classes are similar to each other (see, e.g., [22]).

To show that both left and right SVs are necessary to characterise a signal in the TF domain, examples are given below. Assume that  $x_1(t)$  and  $x_2(t)$  are two linear FM signals in

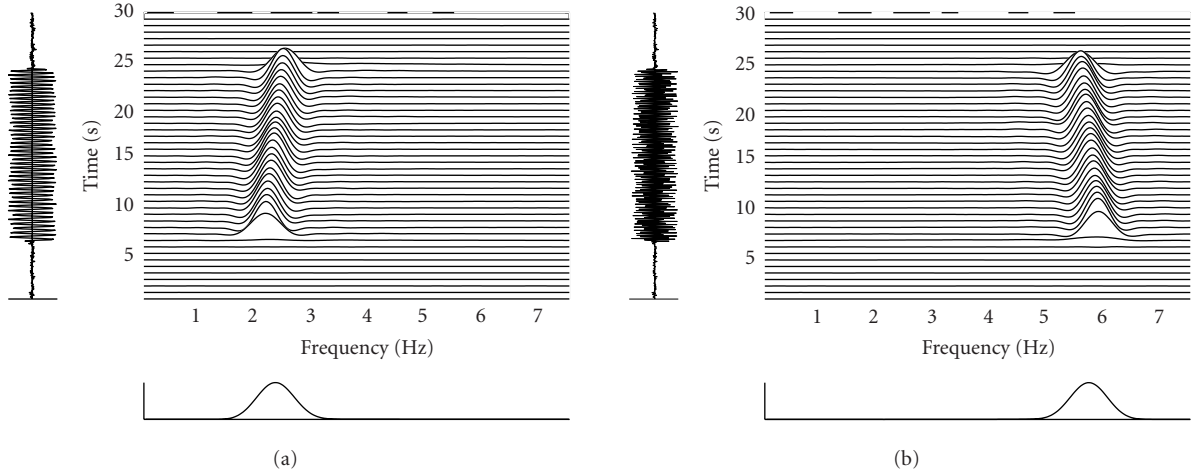


FIGURE 1: The TFD of two linear FM signals in the noise: (a)  $t_1(t)$  and (b)  $x_2(t)$  ( $F_s = 15$  Hz,  $N = 450$ , time resolution = 5).

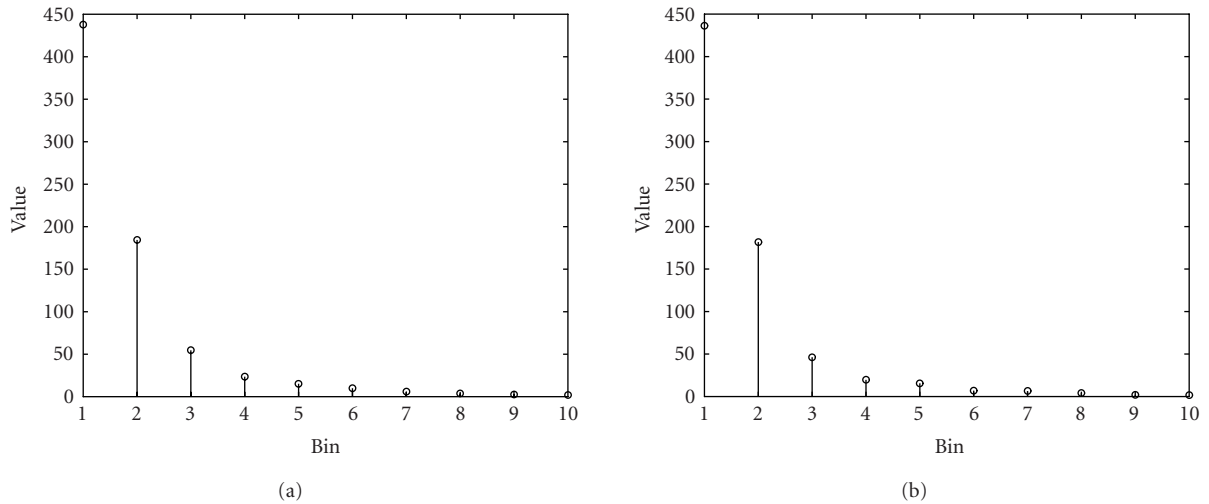


FIGURE 2: The first ten singular values of the TFDs related to (a)  $x_1(t)$  and (b)  $x_2(t)$ .

white noise  $n(t)$ ; that is,

$$\begin{aligned} x_1(t) &= \sin(4\pi t + 0.02\pi t^2) \Pi\left(\frac{t-15}{18}\right) + n(t), \\ x_2(t) &= \sin(12\pi t - 0.02\pi t^2) \Pi\left(\frac{t-15}{18}\right) + n(t), \end{aligned} \quad (3)$$

where  $\Pi(\cdot)$  is the rectangular function. The rectangular function is defined as

$$\Pi(\alpha) = \begin{cases} 1 & \text{if } -\frac{1}{2} < \alpha < \frac{1}{2}, \\ 0 & \text{otherwise.} \end{cases} \quad (4)$$

The TFDs of these two signals are shown in Figure 1. In the figure, the power spectral density and the time-domain representation of the signal are displayed at the bottom and left side of the TF plane. The singular values related to the TFD

of these signals (see Figure 2) show that the two signals are not distinguishable using the singular values alone. Figure 3 shows the first two right SVs related to the TFDs of Figure 1. These two SVs are similar in spite of the fact that the two signals are different. Figure 4, however, shows that the two left SVs are different.

Another example that illustrates the above claim is given below. Assume that

$$x_3(t) = \sin(4\pi t + 0.02\pi t^2) \left( \Pi\left(\frac{t-9}{6}\right) + \Pi\left(\frac{t-21}{6}\right) \right) + n(t). \quad (5)$$

The TFD of the signal along with the singular values and the first two SVs related to the TFD are shown in Figure 5. It can be seen in the figure that the left SVs are similar to those of  $x_1(t)$  represented in Figure 4a, whereas the right SVs are different.

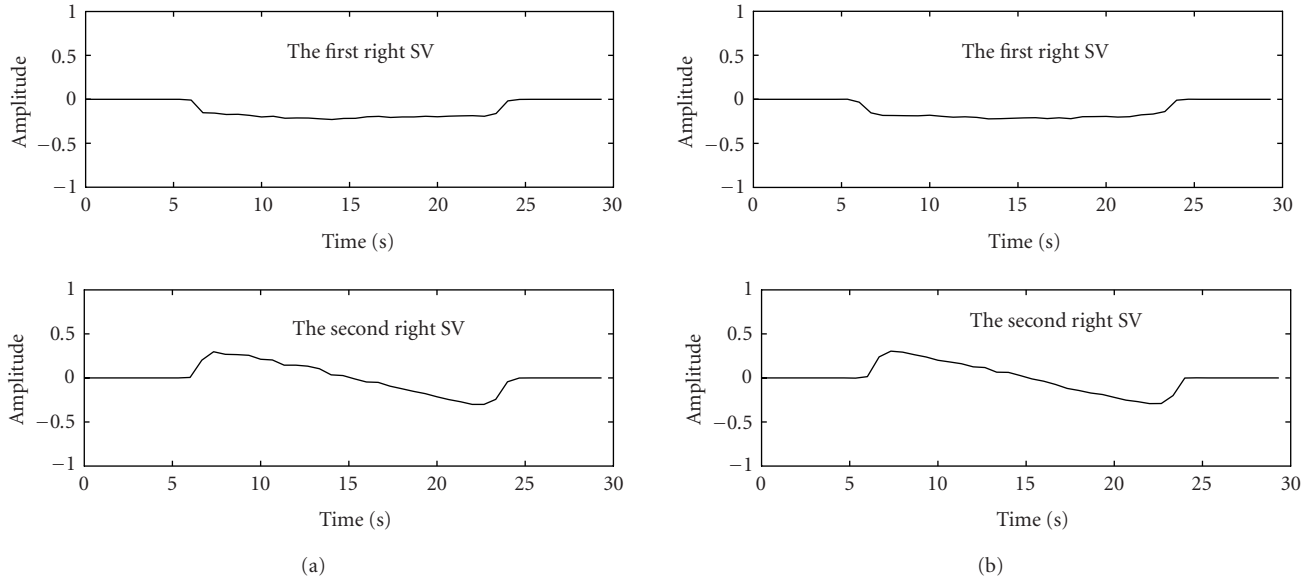


FIGURE 3: The first two right SVs of the TFDs related to (a)  $x_1(t)$  and (b)  $x_2(t)$ .

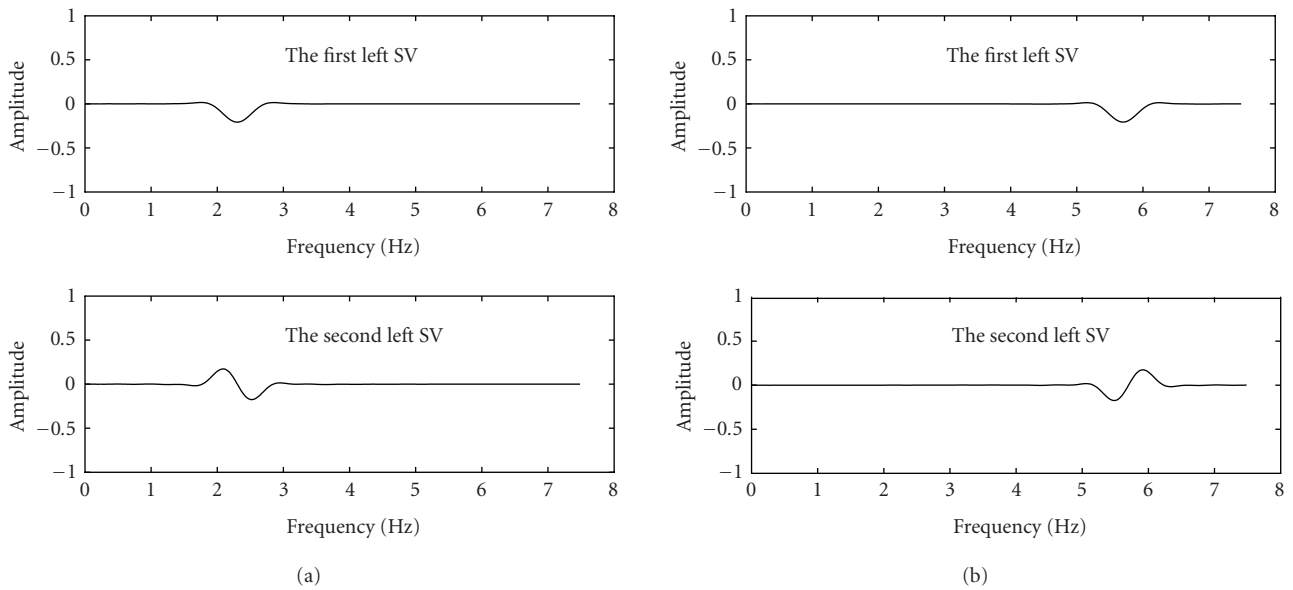


FIGURE 4: The first two left SVs of the TFDs related to (a)  $x_1(t)$  and (b)  $x_2(t)$ .

The above examples show that to unambiguously characterise nonstationary signals in the TF domain, left and right SVs should be used simultaneously.

In [20], the authors introduced an SVD-based approach for TF feature extraction of nonstationary signals. The technique attempts to approximate the TF patterns through a number of rectangles. In the TF plot, the area with a uniform energy density is represented by a rectangle. The rectangles are identified by vectors of five elements  $[\bar{t}, \bar{f}, \hat{t}, \hat{f}, \hat{\sigma}]$ , where  $\bar{t}$  and  $\hat{t}$  represent the location and duration in time;  $\bar{f}$  and  $\hat{f}$  represent the location and width in frequency dimension

in the TF plot; and  $\hat{\sigma}$  represents the importance of the rectangle in the composition of the TF plot. The position and dimensions of the rectangles are computed from the first and second moments of the density functions extracted from the SVs of the TF plot.

The above-mentioned technique is useful for extracting features of nonstationary signals. However, it has three drawbacks. Firstly, it uses a fixed number of features (rectangles) to characterise the patterns embedded in TF plots. Using a limited number of rectangles may not be adequate to identify all possible patterns in the TF plot. Secondly, if there are more

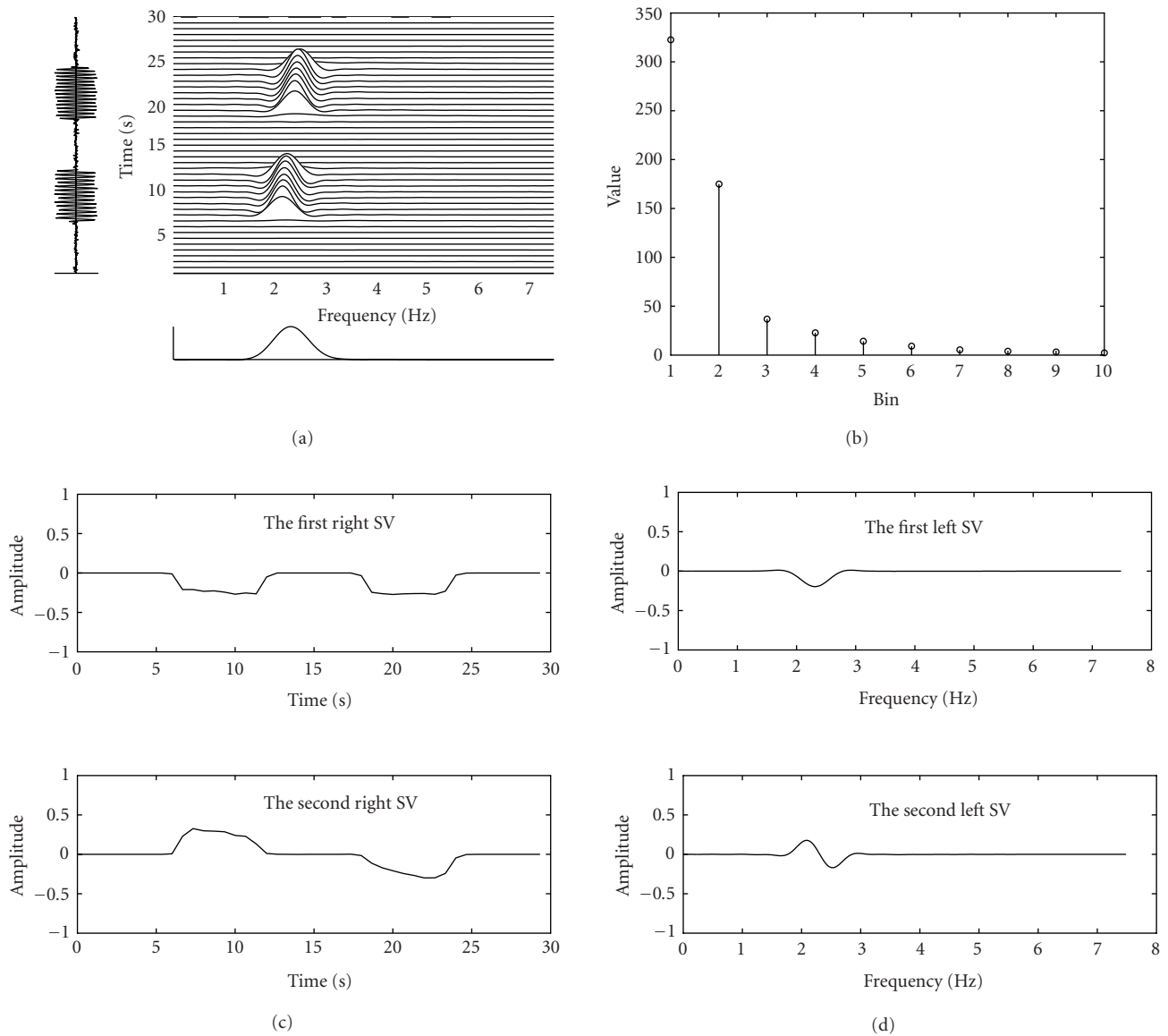


FIGURE 5: (a) The TFD of  $x_3(t)$  ( $F_s = 15$  Hz,  $N = 450$ , time resolution=5). (b) Its singular values. ((c) and (d)) Its right and left SVs.

than one local maximum in the density function, the first and second moments of the density functions cannot show the position and the width of the local maxima. Hence, the technique may work well if (a) the TF patterns are simple enough to be approximated by a limited number of rectangles, and (b) the energy density of the signal is not uniformly concentrated at various locations of the TF plot. Thirdly, a TF pattern decomposed into the orthonormal bases, the left and right SVs, may not be addressed by only one left and right SVs. In other words, more than one left and right SVs may be needed to properly approximate a TF pattern. Hence, the moments extracted from only one left and right SVs are not enough to find the location, time duration, and frequency band of the pattern in the TF plot.

In another study [11], the same authors improved the feature extraction technique with respect to the third flaw. In this technique, the orthonormal bases created for a TF plot are rotated in order to minimise the number of vectors required in linear combinations to approximate the TF patterns.

### 3.4. TF-based EEG seizure feature extraction

Figure 6 shows the TFDs of two 30-second epochs of newborn EEG signal exhibiting seizure and nonseizure activities. The TFD were obtained using the B-distribution with parameter  $\beta = 0.01$ . The SVD was applied to the TFD matrices to compute the left and right SVs. The two first left and right SVs are shown in Figures 7 and 8.

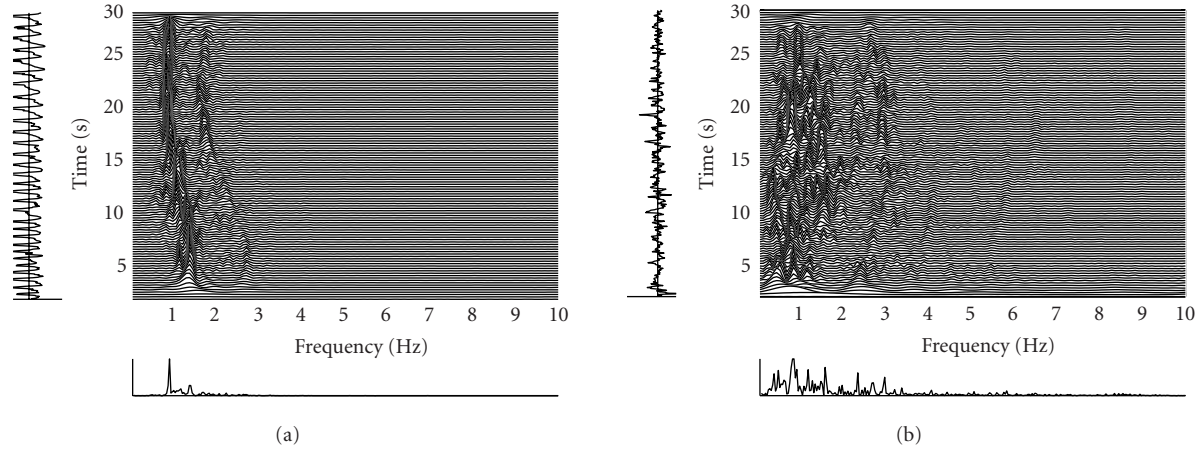


FIGURE 6: The TFD of two EEG epochs using the B-distribution: (a) seizure activity and (b) nonseizure activity ( $F_s = 20$  Hz,  $N = 600$ , time resolution=5).

In Figure 7, the first left SV shows that there is a burst of activity at frequencies around 1 Hz, while the first right SV points to an activity that emerges 14 seconds after the beginning of the epoch and lasts about 15 seconds. The second left SV shows that there are high-energy activities around the frequencies 1.3 Hz and 1.5 Hz. The second right SV indicates the presence of an activity that spans the whole 30-second epoch. These observations related to the first two SVs capture the essential information of the EEG seizure contained in the TF domain.

As shown above, a signal can be characterised by the SVs of its TFD. In other words, the SVs can be used as discriminating features in the seizure detection process. However, a reduced feature set with more appropriate features can provide a better classification accuracy with reduced data analysis cost [23]. In this paper, we suggest using a feature selection technique based on the probability distribution function of the SVs (DFSVs). This technique is described below.

Since the SVs are orthonormal, their squared elements can be treated as the different values of a PDF. The PDF can then be used to compute the probability distribution function.

Let  $X_{tf}$  represents a TFD matrix of a signal  $x$ . Using SVD, this matrix can be represented as

$$X_{tf} = U\Sigma V^T, \quad (6)$$

where  $U(M \times M)$ ,  $\Sigma(M \times N)$ , and  $V(N \times N)$  are matrices of left SVs, singular values, and right SVs, respectively. The PDF can be formed from individual columns of matrices associated with the left and right SVs. For example, the PDF related to the first column of matrix  $U$ ,  $f_{U_1}$ , is given by

$$f_{U_1} = \{u_{11}^2, u_{12}^2, \dots, u_{1M}^2\}, \quad (7)$$

where  $u_{1i}$  represents the  $i$ th element of  $U_1$  (the first column of  $U$ ), and  $\sum_{i=1}^M u_{1i}^2 = 1$ . The related probability distribution

function can be obtained as

$$F_{U_1} = \{v_1, v_2, \dots, v_M\}, \quad (8)$$

where

$$v_j = \sum_{i=1}^j u_{1i}^2 \quad \text{for } j = 1 \text{ to } M. \quad (9)$$

Distribution functions are nondecreasing, and it can be seen from Figures 9 and 10 that they have no significant changes in some areas. This is reflected in the corresponding histograms by few points with significant values. By using these histograms as features for detection, a considerable computational time will be gained.

Figures 9 and 10 show the distribution functions extracted from the first and second SVs associated with seizure and nonseizure activities shown in Figures 7 and 8, respectively. The histograms extracted from the left SVs show that for a signal including seizure, except the first and last bins, the content of the bins is almost zero.

### 3.5. The feature extraction algorithm

To summarise, the proposed TF-based algorithm for seizure feature extraction comprises the following steps.

*Step 1. Filtering:* since only the low-frequency signature of the seizure is of interest, any activity higher than 10 Hz is filtered.

*Step 2. Segmentation:* segmenting the EEG signal into 30-second epochs without overlapping.

*Step 3. Down sampling:* reducing the sampling rate from 256, the sampling rate in the recording time, to 20 samples per second to reduce the computational load. Following the Nyquist rate, this sampling rate is enough to analyse signals with frequencies less than 10 Hz. The *resample* function of Matlab was used for the down-sampling process.

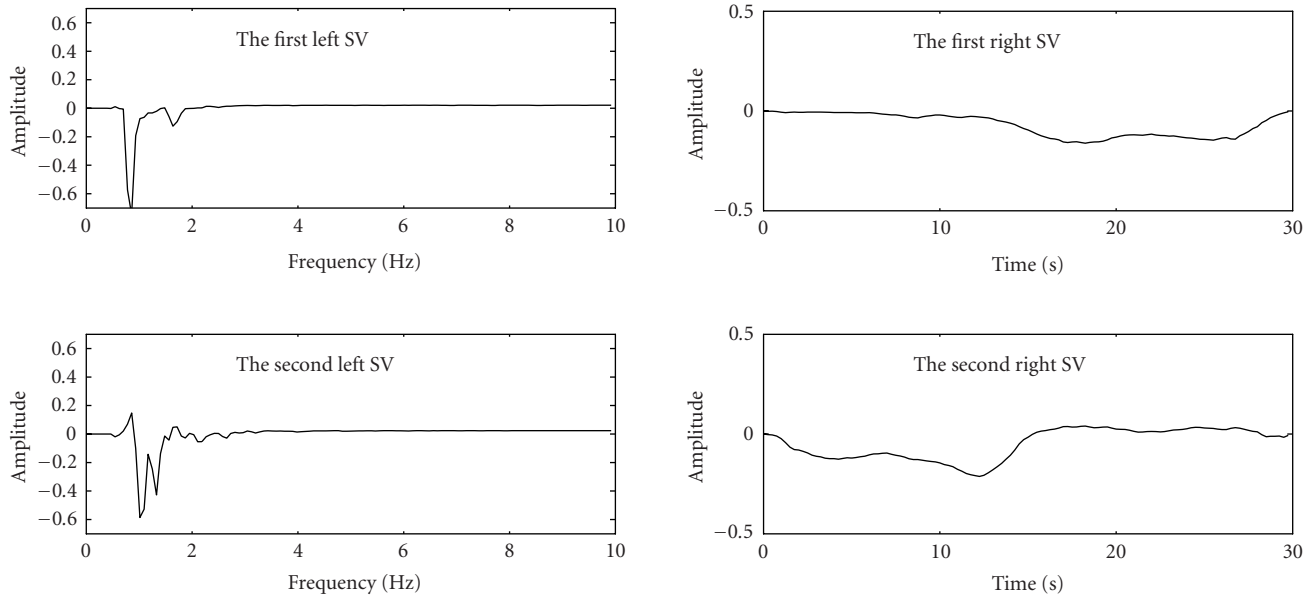


FIGURE 7: Left and right SVs of the matrix representing [Figure 6a](#) (seizure activity).

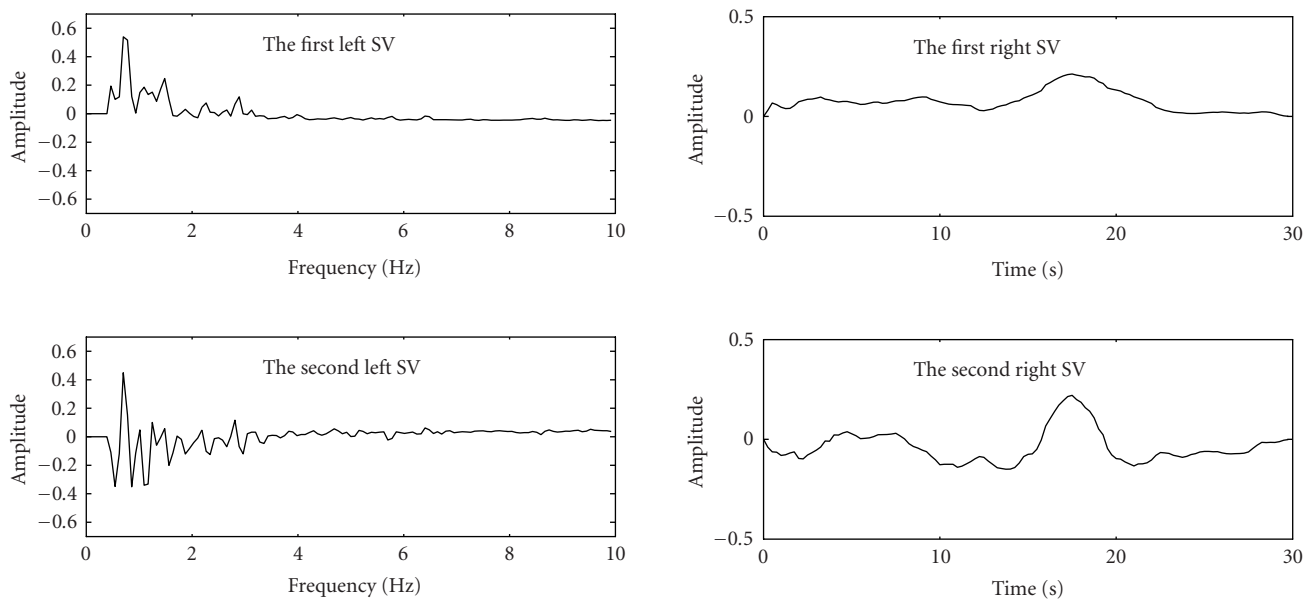


FIGURE 8: Left and right SVs of the matrix representing [Figure 6b](#) (nonseizure activity).

*Step 4. TF representation:* the 30-second EEG epoch is mapped into the TF domain using B-distribution with  $\beta = 0.01$ .

*Step 5. Applying SVD:* computing left and right SVs of the matrix related to the TF representation.

*Step 6. Extracting distribution functions:* since SVs are orthonormal, the squared elements of the SVs can be consid-

ered as density functions. The density functions are then used for computing the distribution functions.

*Step 7. Histogram computing:* to compute the histogram related to the distribution function, we have used 11 bins. Successive bins have discrete elements of the distribution function with the maximum variation of 0.09. Reducing the number of bins decreases performance of the system in differentiating between seizure and nonseizure activities.

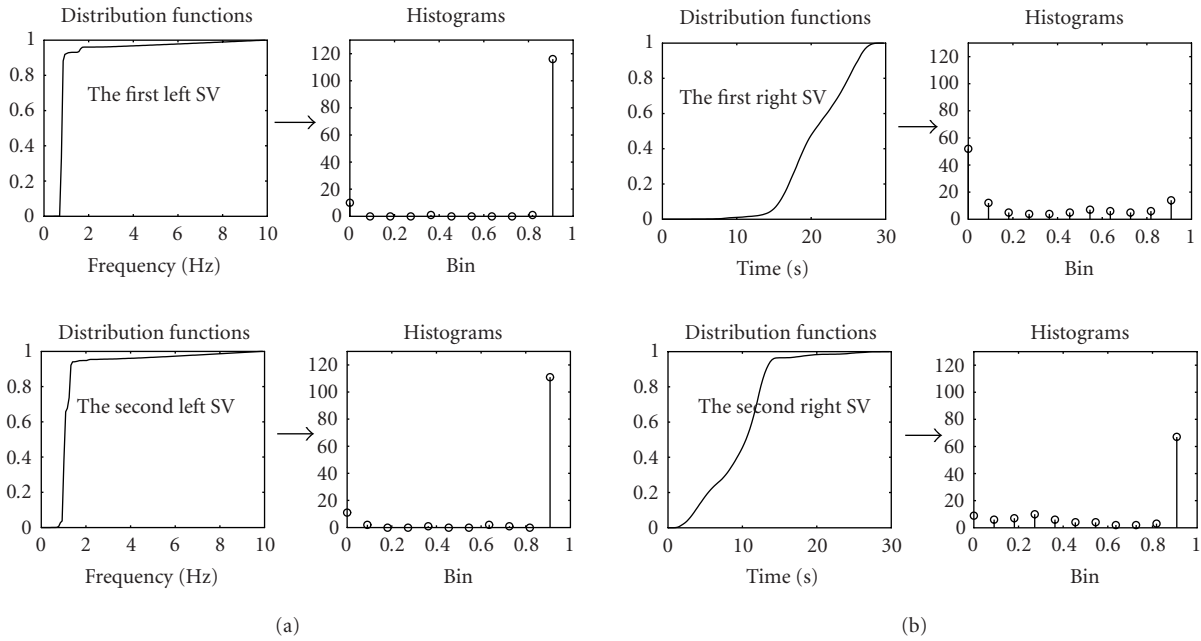


FIGURE 9: The probability distribution functions and their histograms associated with (a) the left SVs and (b) right SVs of the matrix representing Figure 6a (seizure activity).

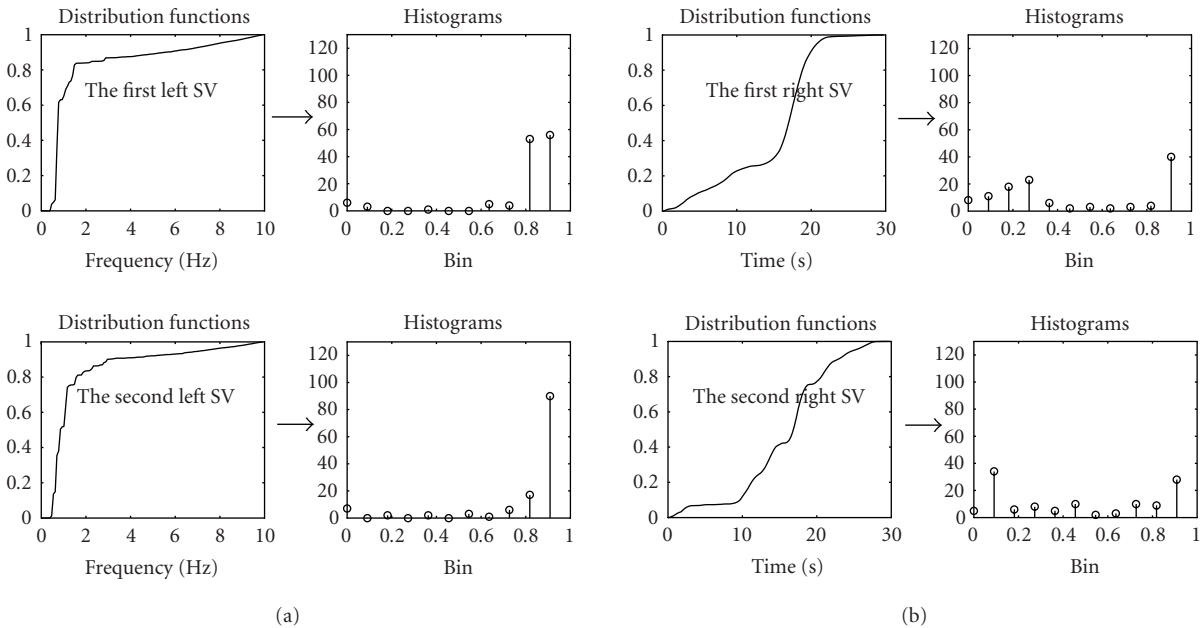


FIGURE 10: The probability distribution functions and their histograms associated with (a) the left SVs and (b) right SVs of the matrix representing Figure 6b (nonseizure activity).

However, this number of bins was found to be adequate for 30-second epoch seizure detection.

#### 4. EEG SEIZURE DETECTION

To discriminate between seizure and nonseizure activities in newborn EEG signals, we have used two left and two right

SVs related to the TFD of the 30-second EEG epoch. Experiments showed that using these vectors achieves good results. The feature extracted through the histogram of the four SVs was reorganised into a feature vector to be fed to a neural network. As the individual histograms have 11 bins, the length of the feature vector fed to neural network was 44.



The neural network used in this research was a feed-forward network. Networks with both one and two hidden layers using different neurons (2 to 15 neurons) in each of the hidden layers were studied. A two-layer neural network with 44, 8, and 2 neurons, respectively, in the input, hidden, and output layers offered the best detection rate. The network was then supervisory trained using the Levenberg-Marquardt algorithm [24].

#### 4.1. Experimental results and performance comparison

In order to assess the performance of the above technique, the EEG data of eight newborns have been used. Firstly, we made a database of 30-second epochs associated with seizure and nonseizure activities. Seizure activities in the seizure epochs may have durations less than 30 seconds. The database includes 300 seizures and 800 nonseizures. To train the neural network, 200 seizures and 200 nonseizures were randomly selected and applied to the neural network. The training process learned the seizure and nonseizure patterns after 800 training iterations. The trained neural network was tested using the remaining EEG data and resulted in about 90% and 5.7% good detection rate (GDR) and false detection rate (FDR), respectively. The GDR and FDR are defined as

$$\text{GDR} = 100 \times \frac{\text{GD}}{R} \%, \quad \text{FDR} = 100 \times \frac{\text{FD}}{\text{GD} + \text{FD}} \%, \quad (10)$$

where GD and FD are the total number of good and false detections, respectively, and  $R$  represents the total number of seizures recognised by the neurologist. A good detection occurs if the detected EEG epoch matches the epoch labeled as a seizure by the neurologist.

The performance of the proposed seizure detection method is compared with three other methods, namely, autocorrelation, spectrum, and singular spectrum analysis (SSA) techniques. These techniques are briefly described in the following sections.

#### 4.2. The autocorrelation technique

The autocorrelation-based technique proposed by Liu et al. [25] relies on the assumption that the essential characteristic in newborn EEG seizures is periodicity. To assess the amount of periodicity, the EEG data is segmented into 30-second epochs and each epoch is divided into 5 windows. Depending on the autocorrelation function of a window, up to four primary periods are calculated for each window in an epoch. The windows are then scored whereby more evenly spaced primary periods are allocated larger scores. After each window in an epoch is scored, a rule-based detection scheme is applied to classify each epoch as seizure positive or negative. If two or more channels of EEG data in the same epoch are seizure positive, the epoch is then classified as containing seizure activity.

#### 4.3. The spectrum technique

The method introduced by Gotman et al. was mainly based on the spectrum analysis of short epochs of EEG data

[26, 27]. In this technique, to detect seizure activities, the EEG data is segmented into 10-second epochs using a sliding window. The window is moved along the EEG in 2.5-second steps. The algorithm was designed to extract features from each epoch and compare them with those of the background. The background is defined as a 20-second segment of EEG finishing 60 seconds before the start of the current epoch. The main advantage of using a constantly updated background is that results are not dependent on the specific features of a fixed epoch.

The frequency spectrum of the individual epochs is calculated and the following features are extracted: (1) the frequency of the dominant spectral peak, (2) the width of the dominant spectral peak, and (3) the ratio of the power in the dominant spectral peak to that of the background spectrum in the same frequency band.

The three features are used in detecting seizures in each epoch. If an epoch is recognised as containing seizure, a further three criteria are employed to reduce the rate of false detections. Detected seizures are ignored if the epoch is largely nonstationary, if there is a large amount of AC power noise present, or if it appears that an EEG lead has been disconnected.

The aim of this technique is to determine whether a dominant peak exists in the power spectral density estimate. This is equivalent to finding whether an EEG signal has a dominant periodic shape in the time domain. The features used to classify an epoch as a seizure ensure that the dominant peak of the spectrum is significant compared with the background spectrum.

#### 4.4. The SSA technique

Celka et al [7] proposed a method for newborn EEG seizure detection using SSA. The SSA method is suited for extracting information from stationary or at least quasistationary signals cluttered with noise.

In this method, to detect seizure activity in EEG data, the signal is preprocessed. The preprocessing is based on a nonlinear whitening filter that spreads the spectrum of the background while keeping rhythmical features of the seizure activities. The filtered signal is then segmented into 10-second epochs using sliding window with 1.25-second steps. The individual epochs are converted into a matrix for separating the noise subspace from the signal subspace. The signal subspace is obtained by using  $n_0$  SVs related to the  $n_0$  largest singular values of the matrix using the SVD technique. To find  $n_0$ , as a criterion for space division, they used the Rissanen minimum description length (MDL) method. In this technique, if  $n_0$  is equal to 1, the related epoch is considered as a background; otherwise, it is a seizure.

#### 4.5. Performance comparison and discussion

The performance assessment of the above-mentioned methods was accomplished by applying their algorithms to all the EEG channels of each newborn. In using the DFSV technique, the EEG epoch is considered to contain a seizure in

TABLE 1: Performance comparison of the DFSV with the three other methods.

Patients	Autocorrelation		Spectral		SSA		DFSV	
	GDR	FDR	GDR	FDR	GDR	FDR	GDR	FDR
Baby 1	50%	11%	44%	14%	50%	19%	66%	9%
Baby 2	32%	7.5%	47%	0	97%	2%	98%	2%
Baby 3	95%	37 %	85%	36%	99%	35%	95%	15%
Baby 4	31%	0	0	0	91%	0	96%	0
Baby 5	67%	1 %	78%	1%	98%	1%	99%	1%
Baby 6	29%	9 %	0	0	87%	0	92%	0
Baby 7	72%	3 %	33%	0	97%	2%	95%	2%
Baby 8	77%	1 %	67%	0	97%	1%	99%	1%
Average	56.6%	8.6 %	44.2%	6.3%	89.5%	7.5%	92.5%	3.7%

a given time interval if the algorithm detects a seizure in one or more channels in that specific interval. The performance results are summarised in Table 1. The results show that the DFSV technique has the overall better performance than the other techniques in terms of the GDR and FDR. For Baby 3, although the DFSV has 4% lower GDR than the SSA, its FDR is remarkably lower than all the other tested techniques. The GDRs of all four techniques for Baby 1 are considerably lower than those of the other babies. The reason could be the lack of low-frequency signature of seizures as all of the techniques are based on the low-frequency signatures. In such case, EEG seizures can be detected using the high-frequency signature as mentioned in [28].

## 5. CONCLUSIONS

This paper presents a new TF-based technique for detecting seizure activity in the EEG signal of neonates. The detection process uses the low-frequency signature of seizures. To detect EEG seizure, the signal is segmented into 30-second epochs and analysed using the SVs of the TFD of the signal. Histograms extracted from the distribution function formed from the squared-elements of the left and right SVs were shown to efficiently discriminate between the seizure and nonseizure activities as evidenced by the high detection rates. The GDR resulted from applying the untrained data set to the neural network shows the good quality of the extracted feature.

This technique is based on low-frequency signature of the seizures. In a related work, we have shown that some types of seizures may have only signatures in high-frequency area. This fact may potentially result in a reduction of the seizure detection rate. To overcome this problem, the authors proposed a new technique based on high-frequency seizure signature and are working toward a method that can effectively combine the detectors based on those types of signatures. The results of the work will appear elsewhere.

## ACKNOWLEDGMENTS

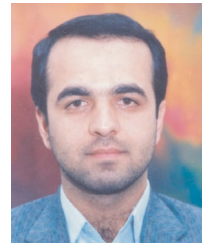
This research is funded by the Australian Research Council (ARC). The authors wish to thank Professor Paul Colditz of the Royal Women's Hospital in Brisbane for providing access to the Perinatal Research Centre and Dr. Chris Burke of the Royal Children's Hospital in Brisbane for his assistance in the interpretation of the EEG data.

## REFERENCES

- [1] E. M. Mizrahi and P. Kellaway, "Neonatal electroencephalography," in *Diagnosis and Management of Neonatal Seizures*, pp. 99–143, Lippincott-Raven, Philadelphia, Pa, USA, 1998.
- [2] P. L. Paige and P. R. Carney, "Neurologic disorders," in *Handbook of Neonatal Intensive Care*, chapter 25, pp. 644–678, Mosby, St. Louis, Mo, USA, 2002.
- [3] C. T. Lombroso, "Neonatal EEG polygraphy in normal and abnormal newborns," in *Electroencephalography. Basic Principles, Clinical Applications and Related Fields*, E. Niedermeyer and F. H. Lopes da Silva, Eds., chapter 48, pp. 803–875, Williams and Wilkins, Baltimore, Md, USA, 1993.
- [4] E. M. Mizrahi, P. Plouin, and P. Kellaway, "Neonatal seizures," in *Epilepsy: A Comprehensive Textbook*, J. Engel and T. A. Pedley, Eds., vol. 1, chapter 57, pp. 647–663, Lippincott–Raven, Philadelphia, Pa, USA, 1997.
- [5] P. Celka and P. Colditz, "Nonlinear nonstationary wiener model of infant EEG seizures," *IEEE Transactions on Biomedical Engineering*, vol. 49, no. 6, pp. 556–564, 2002.
- [6] B. Boashash, H. Carson, and M. Mesbah, "Detection of seizures in newborns using time-frequency analysis of EEG signal," in *Proc. 10th IEEE Workshop on Statistical Signal and Array Processing*, pp. 564–568, Pocono Manor, Pa, USA, August 2000.
- [7] P. Celka and P. Colditz, "A computer-aided detection of EEG seizures in infants: a singular-spectrum approach and performance comparison," *IEEE Transactions on Biomedical Engineering*, vol. 49, no. 5, pp. 455–462, 2002.
- [8] B. Boashash and M. Mesbah, "A time-frequency approach for newborn seizure detection," *IEEE of EMBS Magazine*, vol. 20, no. 5, pp. 54–64, 2001.
- [9] H. Hassanpour, W. J. Williams, M. Mesbah, and B. Boashash, "Time-frequency extraction of EEG spike events for seizure detection in neonate," in *Proc. 6th International Symposium on Signal Processing and Its Application (ISSPA '01)*, vol. 1, pp. 246–249, Kuala Lumpur, Malaysia, August 2001.

- [10] G. Nakos and D. Joyner, *Linear Algebra with Applications*, Brooks/Cole Publishing Company, Pacific Grove, Calif, USA, 1998.
- [11] D. Groutage and D. Bannik, "A new matrix decomposition based on optimum transformation of the singular value decomposition basis sets yields principal features of time-frequency distributions," in *Proc. 10th IEEE Workshop on Statistical Signal and Array Processing*, pp. 598–602, Pocono Manor, Pa, USA, August 2000.
- [12] L. Cohen, "The need for time-frequency analysis," in *Time-Frequency Analysis*, Prentice Hall Signal Processing Series, chapter 5, pp. 70–81, Prentice-Hall, Englewood Cliffs, NJ, USA, 1995.
- [13] S. S. Abeysekera and B. Boashash, "Methods of signal classification using the images produced by the Wigner-Ville distribution," *Pattern Recognition Letters*, vol. 12, no. 11, pp. 717–729, 1991.
- [14] B. Boashash, "Part I: Introduction to the concepts of TFSAP," in *Time-Frequency Signal Analysis and Processing: A Comprehensive Reference*, pp. 1–81, Elsevier, Oxford, UK, 2003.
- [15] B. Boashash and B. Barkat, "Introduction to time-frequency signal analysis," in *Wavelet Transforms and Time-Frequency Signal Analysis*, L. Debnath, Ed., pp. 321–380, Birkhäuser, Boston, Mass, USA, 2000.
- [16] W. J. Williams, "Reduced interference time-frequency distributions," in *Time-Frequency Signal Analysis and Processing: A Comprehensive Reference*, B. Boashash, Ed., chapter 5, pp. 168–177, Elsevier, Oxford, UK, 2003.
- [17] B. Barkat and B. Boashash, "A high-resolution quadratic time-frequency distribution for multicomponent signals analysis," *IEEE Trans. Signal Processing*, vol. 49, no. 10, pp. 2232–2239, 2001.
- [18] N. M. Marinovic and G. Eichmann, "Feature extraction and pattern classification in space-spatial frequency domain," in *SPIE Intelligent Robots and Computer Vision*, vol. 579 of *Proceedings of SPIE*, pp. 19–25, September 1985.
- [19] S. Gu, J. Ni, and J. Yuan, "Non-stationary signal analysis and transient machining process condition monitoring," *International Journal of Machine Tools and Manufacture*, vol. 42, no. 1, pp. 41–51, 2002.
- [20] D. Groutage and D. Bannik, "Feature sets for nonstationary signals derived from moments of the singular value decomposition of Cohen-Posch (positive time-frequency) distributions," *IEEE Trans. Signal Processing*, vol. 48, no. 5, pp. 1498–1503, 2000.
- [21] V. Venkatachalam and J. L. Aravena, "Nonstationary signal classification using pseudo power signatures: The matrix SVD approach," *IEEE Trans. on Circuits and Systems II: Analog and Digital Signal Processing*, vol. 46, no. 12, pp. 1497–1505, 1999.
- [22] D. Bernal, "Damage localization using load vectors," in *European COST F3 Conference*, pp. 223–231, Madrid, Spain, June 2000.
- [23] A. Jain and D. Zongker, "Feature selection: evaluation, application, and small sample performance," *IEEE Trans. on Pattern Analysis and Machine Intelligence*, vol. 19, no. 2, pp. 153–158, 1997.
- [24] G. Lera and M. Pinzolas, "Neighborhood based Levenberg-Marquardt algorithm for neural network training," *IEEE Transactions on Neural Networks*, vol. 13, no. 5, pp. 1200–1203, 2002.
- [25] A. Liu, J. S. Hahn, G. P. Heldt, and R. W. Coen, "Detection of neonatal seizures through computerized EEG analysis," *Electroencephalography and Clinical Neurophysiology*, vol. 82, no. 1, pp. 30–37, 1992.
- [26] J. Gotman, D. Flanagan, J. Zhang, and B. Rosenblatt, "Automatic seizure detection in the newborn: methods and initial evaluation," *Electroencephalography and Clinical Neurophysiology*, vol. 103, no. 3, pp. 356–362, 1997.
- [27] J. Gotman, J. Zhang, B. Rosenblatt, and R. Gottesman, "Automatic seizure detection in newborns and infants," in *Proc. IEEE 17th Annual Conference on Engineering in Medicine and Biology Society*, vol. 2, pp. 913–914, Montreal, Quebec, Canada, September 1995.
- [28] H. Hassanpour and M. Mesbah, "Neonatal EEG seizure detection using spike signatures in the time-frequency domain," in *Proc. International Symposium on Signal Processing and Its Application (ISSPA '03)*, vol. 2, pp. 41–44, Paris, France, July 2003.

**Hamid Hassanpour** received the B.S. degree in computer engineering from Iran University of Science & Technology, Tehran, Iran, in 1994, the M.S. degree in computer engineering from Amirkabir University of Technology, Tehran, Iran, in 1997, and the Ph.D. degree in signal processing from Queensland University of Technology, Brisbane, Australia. His research interests include signal detection and classification, biomedical signal processing, and time-frequency signal analysis.



**Mostefa Mesbah** received his M.S. and Ph.D. degrees in electrical engineering from University of Colorado at Boulder, Colorado, USA, in the area of automatic control systems. He is currently a Senior Researcher at the Signal Processing Research Centre (SPRC), Queensland University of Technology in Brisbane, Australia, leading a biomedical engineering project that deals with the automatic detection and classification of newborn EEG seizures. His research interests include biomedical signal processing, time-frequency signal processing, signal detection and classification, 3D shape reconstruction from image sequences, and intelligent control systems.



**Boualem Boashash** obtained a Diplôme d'ingénieur-Physique-Electronique from Institut de Chimie et de Physique Industrielles de Lyon (ICPI), University of Lyon, France, in 1978, the M.S. and Doctorate (Docteur-Ingenieur) degrees from the Institut National Polytechnique de Grenoble, France, in 1979 and 1982, respectively. In 1979, he joined Elf-Aquitaine Geophysical Research Centre, Pau, France. In May 1982, he joined the Institut National des Sciences Appliquées de Lyon, France. In 1984, he joined the Electrical Engineering Department, University of Queensland, Australia, as a Lecturer. In 1990, he joined Graduate School of Science and Technology, Bond University, as a Professor of electronics. In 1991, he joined Queensland University of Technology as the foundation Professor of signal processing and Director of the Signal Processing Research Centre. B. Boashash is the Editor of three books and has written over four hundred technical publications. His research interests include time-frequency signal analysis, spectral estimation, signal detection and classification, and higher-order spectra. Professor Boashash is a Fellow of Engineers Australia, Fellow of IREE, and Fellow of IEEE.



## Special Issue on

# Wireless Access in Vehicular Environments

### Call for Papers

Wireless access in vehicular environments (WAVE) technology comes into sight as a state-of-the-art solution to contemporary vehicular communications, which is anticipated to be widely applied in the near future to radically improve the transportation environment in aspects of safety, intelligent management, and data exchange services. WAVE systems will fundamentally smooth the progress of intelligent transportation systems (ITSs) by providing them with high-performance physical platforms. WAVE systems will build upon the IEEE 802.11p standard, which is still active and expected to be ratified in April, 2009. Meanwhile, the VHF/UHF (700MHz) band vehicular communication systems are attracting increasingly attention recently.

The fast varying and harsh vehicular environment brings about several fresh research topics on the study of WAVE systems and future vehicular communication systems, which include physical layer challenges associated with mobile channels, capacity evaluation, novel network configuration, effective media access control (MAC) protocols, and robust routing and congestion control schemes.

The objective of this special section is to gather and circulate recent progresses in this fast developing area of WAVE and future vehicular communication systems spanning from theoretical analysis to testbed setup, and from physical/MAC layers' enabling technology to network protocol. These research and implementation activities will be considerably helpful to the design of WAVE and future vehicular communications systems by removing major technical barriers and presenting theoretical guidance. This special issue will cover, but not limited to, the following main topics:

- 700MHz/5.8GHz vehicle-to-vehicle (V2V)/vehicle-to-infrastructure (V2I) single-input single-output (SISO)/MIMO channel measurement and modeling, channel spatial and temporal characteristics exploration
- Doppler shift study, evaluation and estimate, time and frequency synchronizations, channel estimate and prediction
- Utilization of MIMO, space-time coding, smart antenna, adaptive modulation and coding
- Performance study and capacity analysis of V2V and V2I communications operating over both 5.8GHz and 700Mz
- Software radio, cognitive radio, and dynamic spectrum access technologies applied to WAVE and future vehicular communication systems
- Mesh network and other novel network configurations for vehicular networks
- Efficient MAC protocols development

- Routing algorithms and congestion control schemes for both real-time traffic warning message broadcasting and high-speed data exchange
- Cross-layer design and optimization
- Testbed or prototype activities

Authors should follow the EURASIP Journal on Wireless Communications and Networking manuscript format described at the journal site <http://www.hindawi.com/journals/wcn/>. Prospective authors should submit an electronic copy of their complete manuscript through the EURASIP Journal on Wireless Communications and Networking's Manuscript Tracking System at <http://mts.hindawi.com/>, according to the following timetable.

Manuscript Due	April 1, 2008
First Round of Reviews	July 1, 2008
Publication Date	October 1, 2008

### Guest Editors

**Weidong Xiang**, University of Michigan, Dearborn, USA; [xwd@umich.edu](mailto:xwd@umich.edu)

**Javier Gozalvez**, University Miguel Hernández, Spain; [j.gozalvez@umh.es](mailto:j.gozalvez@umh.es)

**Zhisheng Niu**, Tsinghua University, China; [niuuzhs@tsinghua.edu.cn](mailto:niuuzhs@tsinghua.edu.cn)

**Onur Altintas**, Toyota InfoTechnology Center, Co. Ltd, Tokyo, Japan; [onur@jp.toyota-itc.com](mailto:onur@jp.toyota-itc.com)

**Eylem Ekici**, Ohio State University, USA; [ekici@ece.osu.edu](mailto:ekici@ece.osu.edu)



# Third International Conference on Image and Signal Processing



## ICISP 2008

July 1-3, Cherbourg-Octeville, Normandy, France

### General Chairs

Abderrahim Elmoataz (FR)  
*Université de Caen Basse Normandie*  
 Fathallah Nouboud (CAN)  
*Université du Québec à Trois Rivières*

### Program Committee Chairs

Olivier Lézoray (FR)  
*Université de Caen Basse Normandie*  
 Driss Mammass (MO)  
*Université Ibn Zohr*  
 Paulette Herlin (FR)  
*Université de Caen Basse Normandie*

### Local Committee

C. Charrier (*IUT CM*)  
 A. Mahboubi (*IUT CM*)  
 S. Schüpp (*UCBN*)  
 P. Makany (*IUT CM*)  
 Z. Lakhdari (*UCBN*)  
 L. Brun (*ENSICAEN*)  
 J. Fadili (*ENSICAEN*)  
 Y. Chahir (*UCBN*)

### Invited Speakers

Joachim Weickert  
 (Saarland University - DE)  
 David Tschumperlé  
 (GREYC, Image Team - FR)  
 Godfried Toussaint  
 (McGill University - CA)  
 Driss Aboutajdine  
 (Rabat University - MO)

### Program Committee

To be completed

T. Adali - University of Maryland Baltimore County (USA)  
 J.M. Aroza - Universidad de Granada (ES)  
 A. Belaïd - Univ. Vand.-Les-Nancy (FR)  
 B. Boufama - Université de Windsor (CAN)  
 A. Chalifour - UQTR (CAN)  
 W-K Cham - Chinese University of Hong Kong (CHN)  
 L. Chen - Ecole Centrale de Lyon (FR)  
 L. Cohen - Ceremade (FR)  
 B. Coll - Universitat de les Illes Balears (ES)  
 J. Crespo - Universidad Politécnica de Madrid (ES)  
 F. Deschenes - Université du Québec en Outaouais (CAN)  
 T. Deserno - Aachen University of Technology (GER)  
 F. Escolano - University of Alicante (ES)  
 A. Evans - University of Bath (UK)  
 D. Gorodnichy - National Research Center (CAN)  
 R. Harba - Ecole Polytechnique de l'Univ. d'Orléans (FR)  
 S. Jehan-Bresson - ENSICAEN - France (FR)  
 T. Jiang - The Chinese Academy of Sciences (CHN)  
 Z. Kato - University of Szeged (HU)  
 M.L. Kherfi - UQTR (CAN)  
 W. Kropatsch - Vienna University of Technology (AU)  
 D. Laurendeau - Université Laval (CAN)  
 R. Malgouyres - Univ - Clermont-Ferrand (FR)  
 M. Melkemi - Université Haute Alsace (FR)  
 M. Nikolova - CMLA ENS Cachan (FR)  
 G. Peyré - CNRS, CEREMADE, Université Paris Dauphine (FR)  
 F. Preteux - INT - Evry (FR)  
 E. Rubio Royo - Universidad de Las Palmas de Gran Canaria (ES)  
 B. Smolka - Silesian University of Technology (PL)  
 J-L. Starek - CEA (FR)  
 A. Torsello - University of Venice (IT)  
 E. Uchino - Yamaguchi University (JP)  
 M. Vento - University of Salerno (IT)  
 D. Zhang - Honk Kong Polytechnic University (CHN)  
 D. Ziou - Univ. Sherbrooke (CAN)

### CALL FOR PAPERS

Following the two successful previous editions of ICISP (Agadir 2001, Agadir 2003), the *Université de Caen Basse Normandie* will organize the next ICISP event in Cherbourg-Octeville, Normandy, France. ICISP aims to provide researchers and practitioners from academia and industry with a forum on the last developments in image and signal processing, multimedia and computer graphics. The conference will also provide a unique opportunity for sharing experiences from different backgrounds with the common interest in advanced methods in the above-mentioned fields. The scientific program of ICISP 2008 will include the presentation of invited plenary talks, special sessions as well as poster and regular sessions with contributed research papers.

Topics of interest for submission include, but are not limited to:

- Image and video processing: image filtering, restoration and enhancement, image segmentation, video segmentation and tracking, morphological processing, feature extraction and analysis, interpolation and super-resolution, motion detection and estimation, computer vision, pattern recognition, content-based image retrieval.
- Signal Processing: spectral analysis, time-frequency and time-scale representation, statistical signal processing, filtering, detection and estimation, nonlinear signal processing, radar, antennas, telecommunications systems, acoustics.
- Computer graphics: algorithms, visualization, animation, virtual reality.
- Applications: biomedical sciences, biometry, document image processing and authentication, other applications.

ICISP 2008 will also include a number of special sessions :

- Image mass data analysis,
- Graph-based representations in pattern recognition,
- Biomedical applications: Virtual slide acquisition and processing.

### PAPER SUBMISSION

Prospective authors are invited to submit full papers of not more than eight (8) pages including results, figures and references. All the papers will be handled and reviewed electronically through the conference web site.

**Submission of full paper**  
**Notification of acceptance**  
**Submissions of camera-ready papers**

**January 25, 2008**  
**March 10, 2008**  
**April 10, 2008**

### CONFERENCE VENUE

ICISP'2008 will be held in Cherbourg-Octeville (France) on July 1-3, 2008.

For further information: <http://www.stlo.unicaen.fr/icisp2008>

