

Structural transformation of graphite by arc-discharge

Peter J.F. Harris

Centre for Advanced Microscopy, J.J. Thomson Physical Laboratory, University of Reading, Whiteknights, Reading RG6 6AF, UK.

e-mail: p.j.f.harris@rdg.ac.uk

For Peer Review Only

Structural transformation of graphite by arc-discharge

The formation of novel structures by the passage of an electric current through graphite is described. These structures apparently consist of hollow three-dimensional graphitic shells bounded by curved and faceted planes, typically made up of two graphene layers. The curved structures were frequently decorated with nano-scale carbon particles, or short nanotubes. In some cases, nanotubes were found to be seamlessly connected to the thin shells, indicating that the formation of the shells and the nanotubes is intimately connected. Small nanotubes or nanoparticles were also sometimes found encapsulated inside the hollow structures, while fullerene-like particles were often seen attached to the outside surfaces. With their high surface areas and structural perfection, the new carbon structures may have applications as anodes of lithium ion batteries or as components of composite materials.

1. Introduction

Interesting things can happen when an electric current is passed through graphite. In 1990, Krätschmer and Huffman and their co-workers showed that C_{60} is formed, in high yield, by vaporising graphite in a simple carbon arc apparatus under an atmosphere of helium [1]. Most of the C_{60} is deposited on the walls of the arc-evaporation vessel, along with disordered soot-like material. A short time later, Iijima showed that multiwalled carbon nanotubes with extremely perfect structures can be produced in a similar way [2], although in this case the nanotubes form on the negative graphite electrode. In 1993 it was shown that single-walled nanotubes can be produced by arc-discharge if Co and Ni or some other metal is added to the anode [3,4].

Recently, yet another kind of carbon has been discovered in graphite samples through which a current has been passed [5]. This new carbon apparently consists of hollow graphitic shells bounded by curved and faceted planes, typically made up of two graphene layers. These structures were first found in a commercial ultra-pure graphite. It is believed that they formed during a purification process which involved passing an electric current through the graphite. Support for this idea was provided by

1
2
3 some preliminary experiments involving the passage of a current through graphite
4
5 rods in a carbon arc apparatus, which produced very similar structures. In the present
6
7 study the controlled production of the novel graphene structures by the passage of an
8
9 electric current through graphite is described in detail. The material is characterised
10
11 using high resolution transmission electron microscopy, and evidence is presented
12
13 that the structures are three-dimensional rather than flat. The possible mechanism
14
15 whereby graphite could be transformed into the three-dimensional shells is discussed.
16
17

18
19 It is suggested that the new carbon structures might find applications in a wide
20
21 variety of areas. For example, their extremely large surface-to-volume ratio and likely
22
23 high conductivity suggest that they may be useful in sensors or lithium ion batteries.
24
25 They may also have potential in catalysis or as hydrogen storage materials.
26
27

28 29 30 **2. Experimental**

31
32 The apparatus used to produce the new carbon structures was an Edwards
33
34 S150B evaporation unit. This is normally used for coating scanning electron
35
36 microscopy specimens with a thin layer of carbon. In this unit, the electrodes are 3
37
38 mm graphite rods, one of which is sharpened to a point and held in contact with the
39
40 other electrode with a spring mechanism. High purity rods were used, with impurity
41
42 content <20ppm (Agar Scientific Ltd., UK). The chamber was pumped by a rotary
43
44 pump, giving a vacuum of approximately 0.1 Torr. Discharge was carried out at a
45
46 voltage of 10 V, with a current of approximately 20 A, for a duration of about 2
47
48 minutes. These are the standard conditions for carbon coating, although with a rather
49
50 longer duration. Following arcing, the pointed electrode was generally found to have
51
52 been shortened by a few mm, and a small deposit could be observed near the point of
53
54 contact of the two electrodes. This deposit was scraped from the electrodes and then
55
56 prepared for TEM by dispersing in iso-propanol and then pipetting onto holey carbon
57
58
59
60

1
2
3
4
5
6
7
8
9
10
11
12
13
14
15
16
17
18
19
20
21
22
23
24
25
26
27
28
29
30
31
32
33
34
35
36
37
38
39
40
41
42
43
44
45
46
47
48
49
50
51
52
53
54
55
56
57
58
59
60

TEM films. A sample of a fresh graphite rod was also examined by TEM. The microscope used was a JEOL 2010, with a point resolution of 0.19 nm, operated at an accelerating voltage of 200kV. Images were recorded photographically.

3. Results

A micrograph of material from the fresh graphite rod is shown in Fig. 1(a). As expected, this consists mainly of flat crystallites, ranging from a few 100 nm to about 5 μm in size, containing up to 100 layers. The crystallites were often folded and buckled, and were accompanied by small amounts of disordered material. However, nanotubes or other fullerene-related structures were not seen in the fresh graphite.

The carbon collected from the graphite rods following arcing contained some “normal” graphite, but this was accompanied by many regions which had a very different appearance. One of these areas is shown in Fig. 1(b). Here, the outline of the structure is much more irregular than in the fresh graphite, with many curved and unusually-shaped features. The material is decorated with numerous short nanotubes or nanoparticles. An area in which a number of nanotubes can be seen is shown in Fig. 2(a). These tubes typically possessed between two and four walls and could be several 100 nm in length, but tended to be less perfect than those grown by the traditional Iijima arc-evaporation method, in that they often contained sharp bends and other discontinuities. In some cases nanotubes were found to be directly connected to the larger structures; examples can be seen in this image. The observation that nanotubes are joined seamlessly to the larger regions indicates that these regions are three-dimensional rather than flat, the three-dimensional structure arising from presence of pentagonal and other non-hexagonal rings. The junctions between the tubes and the larger shell-like regions may involve seven-membered rings.

1
2
3 A higher magnification image of another region is shown in Fig. 2(b). It can
4
5 be seen from this image that the graphene material is largely bilayer, but some three-
6
7 layer and single-layer graphene is also present. The single-layer graphene structures
8
9 were found to be very beam-sensitive, so obtaining high quality images of this
10
11 material proved difficult. The bilayer spacing, determined from this and other images,
12
13 was generally somewhat larger than the interplanar spacing for graphite, being
14
15 typically around 0.4 nm.
16
17
18

19
20 The thin graphitic material exhibited many unusual features. In some areas,
21
22 nanoparticles or nanotubes appeared to be encapsulated inside the large structures.
23
24 This is illustrated in Fig. 3, where a single-walled nanoparticle can be seen apparently
25
26 inside a bilayer shell. This provides further evidence that the thin graphitic structures
27
28 are hollow. Another interesting observation is that very small particles, which
29
30 appeared to be fullerenes, were frequently seen on the outside surfaces of the thin
31
32 graphitic structures, as shown in Fig. 4. It is notable that the fullerene particle, which
33
34 is approximately the size of a C_{60} molecule, is preferentially attached to the apex of
35
36 the faceted graphene structure. The interaction of fullerenes with the conical graphene
37
38 structures known as carbon nanohorns has been studied recently by Suarez-Martinez
39
40 and colleagues [6]. These workers have shown that fullerenes are frequently observed
41
42 at the tips of nanohorns, rather than on the main bodies of the structures. Although
43
44 this phenomenon is not fully understood [7], it suggests that fullerenes prefer to
45
46 become attached to regions containing pentagonal rings. Therefore, observations such
47
48 as that in Fig. 4 suggest that the apex of the faceted structure contains a pentagon.
49
50 This is supported by the fact that the apex makes an angle of approximately 150° .
51
52 This is close to the angle observed in certain MWNT caps, where a conical region
53
54
55
56
57
58
59
60

1
2
3 joins the cylindrical part of the tube (see ref. [8], p128). It is believed that a single
4
5 pentagon occurs at the point where the two regions are joined.
6
7
8
9

10 11 **4. Discussion**

12
13
14 A remarkable transformation in the structure of graphite as a result of the
15
16 passage of an electric current in an arc-discharge apparatus has been described. It is
17
18 believed that this involves the formation of three-dimensional shell-like structures
19
20 bounded by very thin walls. In most cases these walls consist of bilayer graphene,
21
22 although walls with three or more layers are quite frequently seen. Single-layer
23
24 graphene structures are also occasionally observed. There are a number of reasons for
25
26 believing that these new structures are three-dimensional and hollow rather than flat.
27
28 Firstly, as reported here and in the previous paper [5], carbon nanotubes are often
29
30 observed to be seamlessly joined to the larger regions. It is difficult to envisage a way
31
32 in which nanotubes, with their circular cross-section, could be connected to flat, few
33
34 layer, graphene without being seriously distorted, at least in the vicinity of the
35
36 junction. Secondly, nanoparticles or nanotubes are sometimes found encapsulated
37
38 inside the large structures, as shown in Fig. 3, indicating that the structures are
39
40 hollow. Thirdly, small fullerene particles, similar in size to C₆₀ molecules, are often
41
42 found preferentially attached to the apices of faceted graphene structures, as in Fig. 4,
43
44 providing evidence for the presence of pentagonal rings.
45
46
47
48
49
50
51
52
53

54
55 Some structures rather similar to those described here have been reported in
56
57 recent studies by Jia and co-workers [9] and by Huang *et al.* [10]. These studies
58
59 involved in situ Joule heating of graphite “nanoribbons” inside a TEM. In both papers
60
the authors drew a different conclusion about the nature of the transformation to that

1
2
3 given here: the process was discussed in terms of sublimation and edge reconstruction
4
5 of flat graphene. It is possible, however, that they were seeing a transformation from
6
7 flat graphite to hollow structures, as described in the present work, rather than
8
9 sublimation.
10
11

12
13
14
15 The mechanism of the transformation is not known at present, but a few
16
17 comments can be made. It is possible that the key to understanding the process may
18
19 lie in the edge structure of graphite planes. It is well established that graphite planes
20
21 often have “closed” edges, so that the layers resemble folded sheets [11 - 15], as
22
23 illustrated in Fig. 5 (a). In a sense, therefore, these adjacent graphene layers already
24
25 represent closed structures, and the transformations reported in this paper may simply
26
27 involve an “opening” of the layers, as shown schematically in Fig. 5 (b). Such a
28
29 process might be initiated by the nucleation of pentagonal rings at the closed edges: it
30
31 is clear from the presence of nanotube-like structures in the carbon, and the
32
33 attachment of fullerenes to the faceted structures, that pentagons are present. It also
34
35 seems clear that the electric current passing through the carbon, rather than simply the
36
37 high temperature, is responsible for the transformation. However, further work is
38
39 needed to gain a more detailed understanding of the process.
40
41
42
43
44
45
46
47

48
49 Although two-dimensional graphene has attracted huge interest in recent years
50
51 [16, 17], the possibility of producing large three-dimensional structures with graphene
52
53 walls has not been widely discussed. A few theorists have considered regular three-
54
55 dimensional networks built from small graphene patches (e.g. refs. [18 – 20]), but
56
57 these require three sheets to be joined along a line, usually with sp^3 -bonded carbons,
58
59 rather than two sheets as in the structures reported here. In 1995 Ebbesen and Hiura
60

1
2
3 published a paper entitled “Graphene in 3-dimensions - towards graphite origami”,
4
5 but this was primarily concerned with using scanning probe microscopy to create
6
7 folds in graphene layers on the surface of highly ordered pyrolytic graphite [21]. The
8
9 resulting structures were still essentially two-dimensional. It has been suggested that
10
11 chemical techniques could be used to create three-dimensional structures from
12
13 graphene [22], or that nanoscale water droplets might induce graphene sheets to fold
14
15 up like the petals of a flower [23, 24]. However, none of these ideas have yet been
16
17 demonstrated experimentally. Currently, therefore, the technique described in this
18
19 paper is believed to be the only method for synthesising large, hollow structures with
20
21 ultrathin graphitic walls.
22
23
24
25
26
27
28

29
30 The new the three-dimensional graphene structures described here could
31
32 potentially have important applications. One possible area might be hydrogen storage,
33
34 since forms of carbon rather similar to those described here have been shown to have
35
36 H₂ storage capabilities. Thus, Orimo *et al.* reported in 1999 that “nanostructured
37
38 graphite” prepared by mechanical milling of synthetic graphite can have high H₂
39
40 uptakes [25]. Carbon nanohorns have also been shown to have potentially useful H₂
41
42 storage properties [26]. Theoreticians have suggested that “pillared graphene”, a
43
44 three-dimensional network constructed from graphene and short nanotubes, could
45
46 adsorb 6% of its weight in hydrogen at room temperature and pressure [27]. Although
47
48 the present material is a disordered rather than an ordered network, its H₂ storage
49
50 characteristics might be similar to those of “pillared graphene”.
51
52
53
54
55
56
57

58 The new structures may also have applications in electrical devices. Recently,
59
60 it has been demonstrated that graphene can be used in electrochemical double layer

1
2
3 capacitors [28]. The high surface area graphitic shells reported here might actually
4
5 have advantages over conventional “flat” graphene in this application. The flat
6
7 graphene particles would have a tendency to clump together, while the faceted shells
8
9 would be more likely to retain their surface area. The high conductivity of the
10
11 structures, and their large internal volume might also make them potential candidates
12
13 for the anodes of lithium ion batteries [29].
14
15

16
17
18
19
20 Finally the mechanical properties of the graphitic shells might be superior in some
21
22 ways to those of flat graphene. Although graphene sheets are extremely stiff in
23
24 tension, they have little resistance to bending or compression. Curved or faceted
25
26 structures would be expected to have much greater flexural rigidity. The new
27
28 materials might therefore be useful components of composite materials.
29
30
31
32
33

34 **Acknowledgement**

35
36 I thank Kazu Suenaga for discussions.
37
38
39

40 **References**

- 41
42 [1] W. Krätschmer, L.D. Lamb, K. Fostiropoulos and D.R. Huffman, Nature 347
43 (1990) p.354.
44
45 [2] S. Iijima, Nature 354 (1991) p.56.
46
47 [3] S. Iijima and T. Ichihashi, Nature 363 (1993) p.603.
48
49 [4] D.S. Bethune, C.H. Kiang, M.S. de Vries, G. Gorman, R. Savoy, J. Vazquez
50 and R. Beyers, Nature 363 (1993) p.605.
51
52 [5] P.J.F. Harris, J. Phys.: Condens. Matter 21 (2009) 355009.
53
54 [6] I. Suarez-Martinez, C.P. Ewels, J. Mittal and M. Monthioux, submitted for
55 publication (2011).
56
57 [7] I. Suarez-Martinez, M. Monthioux and C.P. Ewels, Journal of Nanoscience
58 and Nanotechnology 9 (2009) p.6144.
59
60

- 1
2
3
4
5 [8] P.J.F. Harris, *Carbon Nanotube Science*, Cambridge University Press,
6 Cambridge, 2009.
7
8 [9] X. Jia, M. Hofmann, V. Meunier, B.G. Sumpter, J. Campos-Delgado, J.M.
9 Romo-Herrera, H. Son, Y.P. Hsieh, A. Reina, J. Kong, M. Terrones and M.S.
10 Dresselhaus, *Science* 323 (2009) p.1701.
11
12 [10] J.Y. Huang, F. Ding, B.I. Yakobson, P. Lu, L. Qi and J. Li, *Proceedings of the*
13 *National Academy of Sciences of the United States of America* 106 (2009)
14 p.10103.
15
16 [11] D. Ugarte, *Chem. Phys. Lett.* 198 (1992) p.596.
17
18 [12] P.R. Buseck, H. Bo-Jun and L.P. Keller, *Energy and Fuels* 1 (1987) p.105.
19
20 [13] H. Murayama and T. Maeda, *Nature* 345 (1990) p.791.
21
22 [14] Y. Gogotsi, J.A. Libera, N. Kalashnikov and M. Yoshimura, *Science* 290
23 (2000) p.317.
24
25 [15] Z. Liu, K. Suenaga, P.J.F. Harris and S. Iijima, *Phys. Rev. Lett.* 102 (2009)
26 015501.
27
28 [16] A.K. Geim and K.S. Novoselov, *Nature Materials* 6 (2007) p.183.
29
30 [17] A.K. Geim, *Science* 324 (2009) p.1530.
31
32 [18] N. Park and J. Ihm, *Phys. Rev. B* 62 (2000) p.7614.
33
34 [19] K. Umemoto, S. Saito, S. Berber and D. Tománek, *Phys. Rev. B* 64 (2001)
35 193409.
36
37 [20] T. Kawai, S. Okada, Y. Miyamoto and A. Oshiyama, *Phys. Rev. B* 72 (2005)
38 035428.
39
40 [21] T.W. Ebbesen and H. Hiura, *Advanced Materials* 7 (1995) p.582.
41
42 [22] P.M. Ajayan and B.I. Yakobson, *Nature* 441 (2006) p.818.
43
44 [23] N. Patra, B. Wang and P. Král, *Nano Letters* 9 (2009) p.3766.
45
46 [24] V.H. Crespi, *Nature* 462 (2009) p.858.
47
48 [25] S. Orimo, G. Majer, T. Fukunaga, A. Züttel, L. Schlapbach and H. Fujii, *Appl.*
49 *Phys. Lett.* 75 (1999) p.3093.
50
51 [26] H. Tanaka, H. Kanoh, M. El-Merraoui, W.A. Steele, M. Yudasaka, S. Iijima
52 and K. Kaneko, *J. Phys. Chem. B* 108 (2004) p.17457.
53
54
55
56
57
58
59
60

- 1
2
3 [27] G.K. Dimitrakakis, E. Tylianakis and G.E. Froudakis, Nano Letters 8 (2008)
4 p.3166.
5
6
7 [28] M.D. Stoller, S.J. Park, Y.W. Zhu, J.H. An and R.S. Ruoff, Nano Letters 8
8 (2008) p.3498.
9
10 [29] G.X. Wang, X.P. Shen, J. Yao and J. Park, Carbon 47 (2009) p.2049.
11
12

13 14 15 **Figure Captions** 16

- 17
18
19 Figure 1 (a) Low magnification micrograph of carbon from fresh graphite rod.
20 (b) Micrograph at same magnification showing transformation in
21 structure following arc-discharge.
22
23
24 Figure 2 (a), (b) Typical structures found in carbon following arc-discharge.
25
26
27
28 Figure 3 Bilayer graphene structure, apparently hollow with single-walled
29 nanoparticle inside (arrowed).
30
31
32
33 Figure 4 Faceted bilayer graphene structure with enlarged region showing small
34 fullerene particle attached to apex.
35
36
37
38 Figure 5 Schematic illustration of transformation of folded graphene sheets into
39 hollow structure.
40
41
42
43
44
45
46
47
48
49
50
51
52
53
54
55
56
57
58
59
60

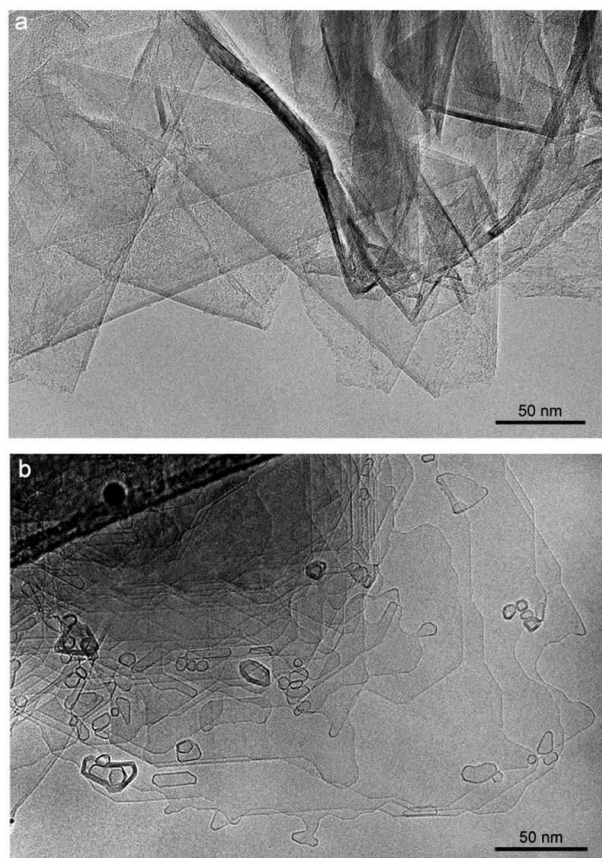


Fig. 1

(a) Low magnification micrograph of carbon from fresh graphite rod. (b) Micrograph at same magnification showing transformation in structure following arc-discharge.
179x287mm (139 x 139 DPI)

1
2
3
4
5
6
7
8
9
10
11
12
13
14
15
16
17
18
19
20
21
22
23
24
25
26
27
28
29
30
31
32
33
34
35
36
37
38
39
40
41
42
43
44
45
46
47
48
49
50
51
52
53
54
55
56
57
58
59
60

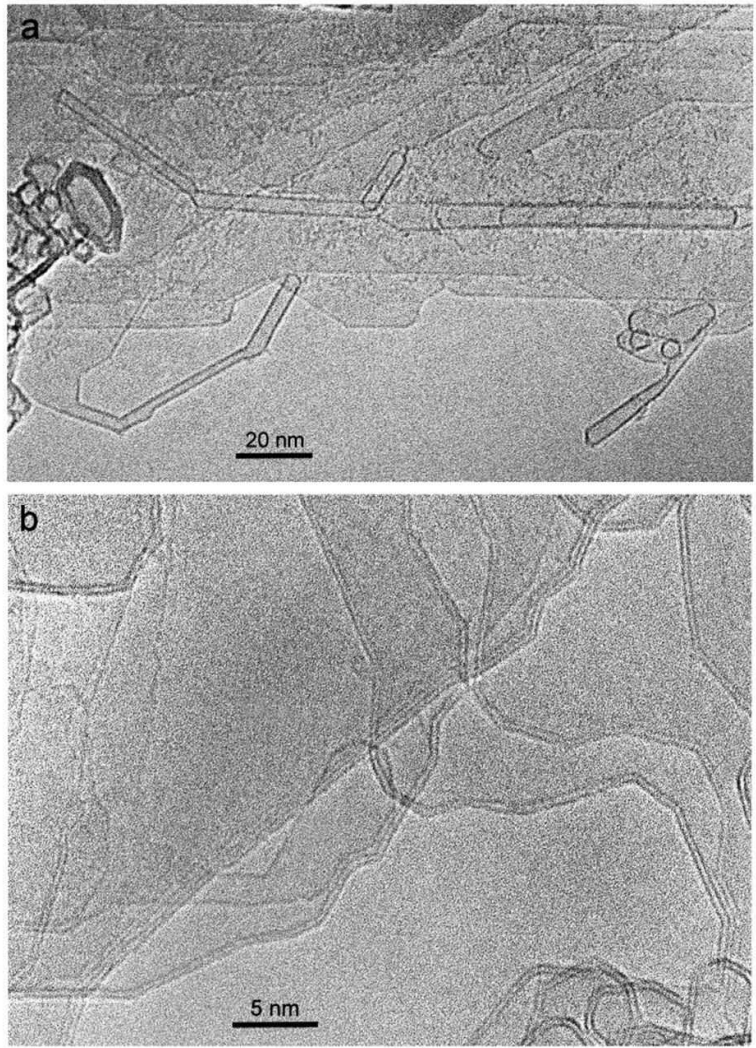


Fig. 2

Typical structures found in carbon following arc-discharge.
199x266mm (139 x 139 DPI)

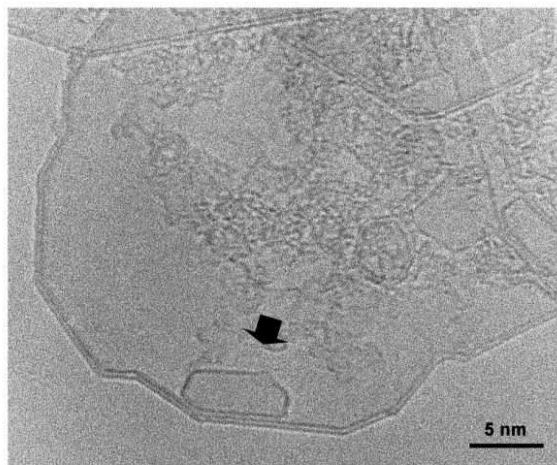


Fig. 3

Bilayer graphene structure, apparently hollow with single-walled nanoparticle inside (arrowed).
169x226mm (139 x 139 DPI)

1
2
3
4
5
6
7
8
9
10
11
12
13
14
15
16
17
18
19
20
21
22
23
24
25
26
27
28
29
30
31
32
33
34
35
36
37
38
39
40
41
42
43
44
45
46
47
48
49
50
51
52
53
54
55
56
57
58
59
60

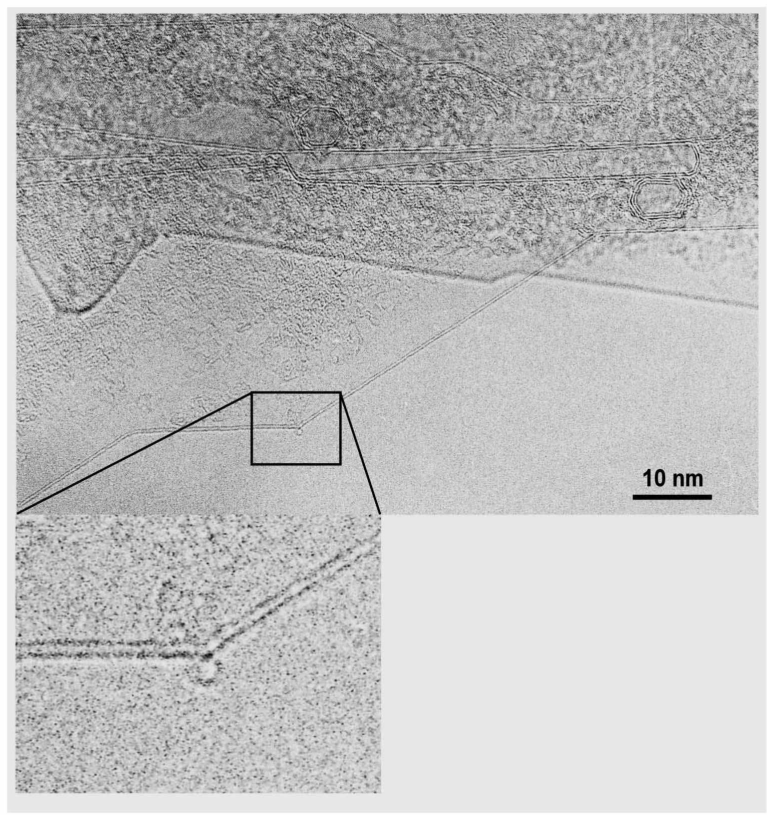


Fig. 4

Faceted bilayer graphene structure with enlarged region showing small fullerene particle attached to apex.
180x180mm (281 x 281 DPI)

AM

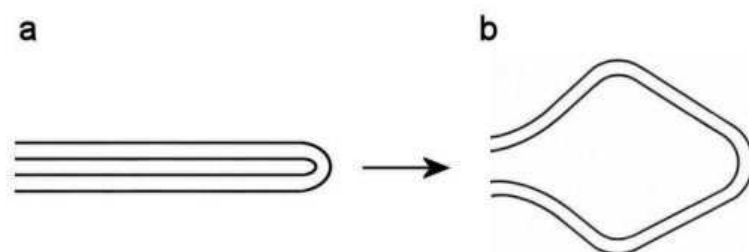


Fig. 5

Schematic illustration of transformation of folded graphene sheets into hollow structure.
110x146mm (139 x 139 DPI)