



A Comparative Study of the Socio-ecological Concomitants of Cassava (*Manihot esculenta* Crantz) Diversity, Local Knowledge and Management in Eastern Indonesia

Roy Ellen and Hermien L. Soselisa

Research

Abstract

We compare cassava (*Manihot esculenta* Crantz) diversity, local knowledge and management practices in two eastern Indonesian populations that differ both ecologically and socioculturally (Nuaulu on the island of Seram, and Debut in the Kei archipelago) and make some reference to a third population (Buano, west of Seram). The report is set within the wider problem of understanding the differences and similarities between *M. esculenta* in its homeland (South America) and in its diaspora, and specifically in island Southeast Asia. We show how under different conditions the importance of diversity and of toxicity varies, and how in particular this is related to environmental degradation and biocultural aspects of food ecology.

Introduction

Population growth and the minimization of agricultural risk over the long-term in island Southeast Asia has been accommodated through, on the one hand, intensification of rice cultivation and, on the other, by extensification of alternative crops. As part of the second trend, there has been a historical process of substitution of pre-Columbian crops with those introduced from the Americas, most saliently maize, sweet potato, and cassava (*Manihot esculenta* Crantz, Euphorbiaceae).¹ Cassava was certainly

1. The predominant English names for *M. esculenta* are 'manioc', in the context of the Americas, and 'cassava', in the context of Africa and Asia. Given that this paper seeks to compare the crop between these two land-masses the different conventions need to be mentioned. For consistency and pragmatic reasons we use 'cassava', the most commonly used term overall, aware that others have argued in favor of the universal application of 'manioc' (Gade 2002).

present in parts of the archipelago by the eighteenth century, but did not attain significance until the late nineteenth century. It is now widely found both as a staple of first choice and as a main buffer crop (Hill 2004).

Most work on the ethnobotany of cassava has been undertaken in tropical lowland South America, where the main focus has been on its origins as a domesticated crop and on issues of diversity management (e.g., Boster 1983, 1984a,b, 1985, 1986, Elias *et al.* 2000, 2001a, Rival *et al.* 2000, Rival & McKey 2008). Indeed, Amazonian cassava is sometimes said to exhibit 'hyperdiversity' (Heckler & Zent 2008), for example, the 204 folk-varieties² reported by Salick *et al.* (1997) for the Amuesha. This has been explained in terms of adaptation to a range of microecological (Boster 1983, Hames 1983) and temporal (Clawson 1985) niches; and where the levels of functional redundancy are too high to be plausibly explained in

Correspondence

Roy Ellen, University of Kent, Canterbury, UNITED KINGDOM.
rfe@kent.ac.uk

Hermien L. Soselisa, Universitas Pattimura, Ambon,
INDONESIA.
hlsoselisa@hotmail.com

Ethnobotany Research & Applications 10:015-035 (2012)

Published: March 22, 2012

www.ethnobotanyjournal.org/vol10/i1547-3465-10-015.pdf

terms of adaptation, ethnobotanists have suggested that it might be a product of an aesthetic for diversity (Boster 1984b:356, Salick *et al.* 1997:6) and a social imperative to exchange (Heckler & Zent 2008).

By comparison, most of what we know of cassava in the diaspora focusses on agronomic issues and the problem of toxicity. Little is known, for example, of diversity management in diasporic Southeast Asia compared with South America. Given the contrasting biogeographic, ecological and sociocultural contexts of cassava in South America and the rest of the world, we might reasonably ask whether the socio-ecological dynamics of this cultigen in the diaspora are the same as those found in its area of endemism. In this paper we test the hypothesis that diasporic conditions of cassava management are different, and do so mainly through a comparative study of two populations of cassava producers and consumers in eastern Indonesia, specifically in the province of the Moluccas (Maluku). This is an ecologically transitional area, diverse in terms of its habitats, marginal in terms of economic development, and complex in terms of both the movements of humans (including spontaneous and government-assisted migrations), the flow of plant germplasm, and the cultural knowledge that accompanies this latter. For both populations we compare the biological diversity of cassava present, local knowledge of cassava and its social distribution, its management, dietary role and sociocultural profile.

In the context of some of the issues of food security that have recently been discussed in the literature (e.g., Ellen 2007), we examine the way in which cassava folk-varieties have become established as part of differing local strategies of risk management and resilience. We therefore also seek to test: hypothesis 1, that the importance attached to cassava is related to its relation to other crops and local ecology, as well as to socioeconomic risk factors; hypothesis 2, that cassava is likely to become increasingly important with specialist commercial cropping, deforestation, climate change and attendant social system insecurity and instability; and hypothesis 3, that the bitter landraces are better adapted to poorer soils and drier micro-climates. We argue that the divergence between our two main study sites relates to the different ecologies of central Seram and the Kei islands, but also to the substitution of cassava for *Metroxylon sagu* Rottb., which until recently was not only widely-grown but also widely traded in the south-eastern Moluccas.

2. We use the term folk-variety to refer to terms and categories applied to sub-specific variants by local subjects, and landrace when talking generally about relatively stable sub-specific phenotypically-distinguishable variants validated by researchers. Because cassava shows continuous variation throughout its range in every characteristic studied, taxonomic classification beyond the local level is extremely difficult. The terms 'cultivar' and 'variety' are avoided. Some researchers follow Berlin, Breedlove and Raven (1973) in using varietal to indicate the lowest level in a system of ethnobiological ranks, and as a term for local categories recognized by subdividing folk-specifics, but evidently this also is the cause of some confusion. See e.g., Gibson (2009) on the problems in using such terms comparatively.

Environmental and Ethnographic Context

The two main populations compared are the Nuaulu of the south central part of the island of Seram (in particular the village of Rouhua), and Debut on the island of Kei Kecil. We also make reference to a third research site: Buano, a small island off the western end of Seram. Although all locations can be broadly characterized as permanently moist (udic) with much the same rainfall distribution, as we shall see there are some significant agroclimatic differences between Seram and Kei. The geographic relationship between the populations is shown in Figure 1, each being linguistically related within the Ambon Timor group of the Austronesian family. The Rouhua fieldwork was undertaken by Ellen in August 2009, who had previously conducted research extensively on Nuaulu subsistence. The Debut research was undertaken jointly by Soselisa and Ellen in August 2009. Fieldwork in Buano was conducted by Soselisa between 1997 and 2000, and (for this project) again in 2009.

The Nuaulu are a discrete cultural group speaking a distinct language who in 2009 occupied six villages in the Amahai subdistrict of south Seram, and who numbered 1686 individuals in 2001. In addition, speakers of Nuaulu presently occupy the village of Wai Pia where they have re-located following displacement during communal disturbances between 1999 and 2002. The present study was conducted in the village of Rouhua, located at 3° 21' S, 129° 08' E on the south coast of Seram immediately east of the large settlement of Sepa, and which in 2009 had a total population of 508, 402 of which were animist and native speakers of Nuaulu, and who are the subjects of the present study. Thus, data were not gathered from recent Butonese migrants or people from Sepa who also currently reside in Rouhua. Vegetation cover in the Nuaulu area is predominantly evergreen lowland forest with some semi-evergreen and moist deciduous forest (Ellen 2010). The dry season is October to March and the wettest season May-August, with a total mean annual rainfall of 2832 mm (Ellen 1978:213), though official records for 2010 indicate 2221 mm annual rainfall for south Seram, and an average annual temperature of 26.3° Celsius (Maluku Dalam Angka 2010:27).

Historically an upland and forest swiddening population, for whom the main source of dietary starch is sago (*M. sagu*), we think it likely that cassava was relatively unimportant for Nuaulu for most of the twentieth century. However, by 1970 it had become a plant of major importance, being grown in most swiddens, and representing 15 per-

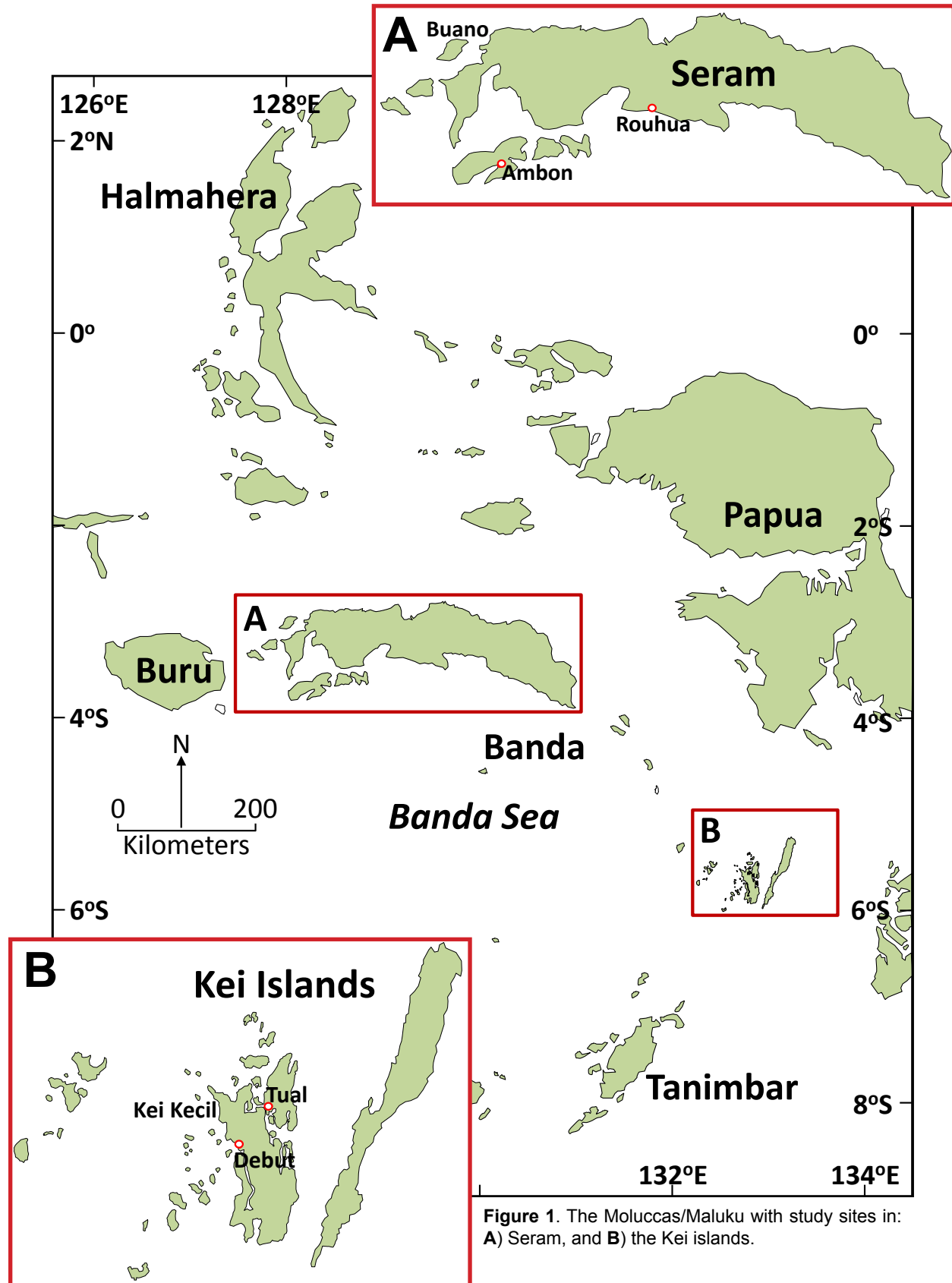


Figure 1. The Moluccas/Maluku with study sites in: A) Seram, and B) the Kei islands.

cent of calorific intake compared with 6 percent for all other root crops combined, and 60 percent for sago (Ellen 1973:471). Initially, cassava was planted after other root crops and in second year swiddens, priority being given to species of *Dioscorea* and taro (*Colocasia esculenta* (L.) Schott), sweet potato (*Ipomoea batatas* (L.) Lam.) and to a lesser extent elephant's ear (*Xanthosoma sagittifolium* (L.) Schott). But although in terms of consumption, cassava had become the most important root crop in terms of output by 1970, in ritual terms it had no significance, all attention being given to yams (*Dioscorea* spp.) and taro, that is to those pre-Columbian crops that had been previously dominant in swiddens.

By comparison, the Kei islands have long been associated in the popular perceptions of other Moluccans as dependent on cassava (or more properly, the fermented flour of the bitter landraces: **enbal**). Our study location is Debut on Kei Kecil, situated at 5° 44' S and 132° 41' E on the west coast of Kei Kecil at the mouth of the Hoat Sorbay (a deep coastal inlet). Debut had a population in 2009 of 2,628 individuals. The dry season is April-October, and the wettest season is December-February. Current rainfall figures for Kei Kecil suggest a range of between 3,000 and 2,000 mm, averaging around 2615 mm. The average annual temperature for Kei is 27.5° Celsius (Maluku Tenggara Dalam Angka 2010:4-5). While soils in the Nuaulu area are humitropepts (inceptisols), those of Kei Kecil are eutropepts, known to risk nutrient deficiency under certain circumstances unless rich humus top soil is preserved (Monk *et al.* 1997:118). Vegetation cover is predominantly moist deciduous forest, with some dry deciduous forest and semi-evergreen rainforest, grassland and shrubby savanna (Monk *et al.* 1997:198, 207). The most common trees in regrowth areas are species of *Macaranga*. Following Harris (1980), the environment of much of Kei Kecil can be characterized as a mixture of savanna woodland, tree savanna and shrub savanna.

At the present time, Debut is largely dependent on mixed gardening (a combination of swiddens and fixed dryfields near the village) with cassava as the dominant starch staple, some cash-cropping, agroforestry, fishing and 'agar-agar' [*Hydropuntia edulis* (S.G. Gmelin) Gurgel & Fredericq (syn. *Gracilaria lichenoides* Greville)] farming in frames located in near shore waters. There has been a government-sponsored agricultural development project in Debut for 3-4 years involving mainly the companion planting of cassava and ground nuts (*Arachis hypogaea* L.).

But this pattern has not always prevailed. In most of the Kei islands cassava has largely replaced archaic native crops such as the foxtail-millet, *Setaria italica* (L.) P. Beauv. (Barraud 1985, Monk *et al.* 1997:704), and *Coix lacryma-jobi* L., more demanding hydrophilic root crops

(*Dioscorea* spp., *C. esculenta*), and - in particular - sago (*M. sagu*). We hypothesize here that this is related to accompanying environmental change. Over a period of 100 years cassava has become what we might describe as a 'cultural keystone species', playing an important role in social identity as well as food culture (Ellen 2006:259). From a review of the historical data (Ellen & Soselisa n.d.), it would appear that from the late nineteenth century and early twentieth century onwards Kei Kecil in particular was degraded through heavy timber extraction from the kind of lowland tropical rainforest reported for Seram, compounded by overintensive cultivation (Donner 1986). In his literature review, Nutz (1959:14,19) characterises the Kei islands at this time as emerging as an intermediate zone between Seram and Buru (with predominant dependence on sago) on the one hand, and Timor and Tanimbar (with predominant dependence on rice) on the other, and where various staples competed, but where cassava eventually prevailed.

This period of environmental transition has simultaneously seen radical sociocultural change. While the Nuaulu remain largely an animist population living at low density on the margins of mature forest with a forest extraction and swiddening mode of subsistence, Debut has moved from being a traditional animist society to a largely Catholic community in about 100 years, with a small Muslim minority. It is also more densely inhabited and integrated into both the state and the market than the Nuaulu area.

Our third, subsidiary, research site, Buano, in some respects lies between the Nuaulu and Kei Kecil in ecological and subsistence terms, and is situated at 3° 00' S and 127° 56' E. Lowland rainforest is much depleted, and part of the island is covered in savanna grassland characteristically populated by **kayu putih** trees (*Melaleuca cajuputi* (J.F. Gmel.) Powell) from which the oil is extracted and marketed. Residents continue to rely on sago, but cassava is of growing importance. Buano is linguistically and culturally closer to the Nuaulu than Debut, but has been largely populated by Christians and Muslims since the seventeenth century. Unlike the traditional Nuaulu area, its coastal location makes it well connected in terms of trading networks.

Nuaulu Cassava Terms and Categories and Knowledge Distribution

During the 1970s and 1980s Ellen collected data on *M. esculenta* folk-varieties grown by Nuaulu. These data were consolidated in the Nuaulu Ethnobotanical Database (NED) produced after 1996 (see e.g., Ellen 2010:121-2). The Nuaulu term for *Manihot* is **kasipii**³ from Ambonese Malay (hereafter AM) **kasbi**. The category includes **kasipii sombar** (literally 'shade' (AM) **kasipii**; also AM **kasbi karet**), *Manihot glaziovii* Müll. Arg., which is planted main-

3. All Nuaulu terms are standardized using the orthography provided by Bolton and Matoke 2005. In earlier publications by Ellen **kasipii** appears as **kasipi**.

Ellen & Soselisa - Socio-ecological Concomitants of Cassava (*Manihot esculenta*) Diversity, Local Knowledge and Management in Eastern Indonesia 19

ly as an ornamental and shade plant in village areas, and from which the leaves but not the roots can be harvested. The remaining types of **kasipii** elicited during all fieldwork phases are all subtypes of *M. esculenta* and listed in Table 1. In this table it should be noted that some folk-varieties have well-known synonyms, where one term is often AM (e.g., Nuauulu **honue** = AM **paru**; Nuauulu **masikunne** = AM

mantega). Especially with recently introduced types, AM terms are frequently used even when other Nuauulu terms are available, and in an ad hoc way. For example, **kasipii tiga bulan** is clearly established as **kasipii kanapua**. However, although cassava diversity is highly dynamic and the terminology used to describe it not always stable,

Table 1. Nuauulu terms for folk-varieties of *Manihot esculenta* Crantz, Rouhua 2009. KEY: w = white, b = black, r = red, y = yellow, r/w = reddish white, w/y = whitish yellow; AM, Ambonese Malay; IND, Indonesian; k.o., kind of; syn, synonym. Note that names in Ambonese Malay are often the same as in standard Indonesian. Therefore, here AM should be understood to refer to names that have come from speakers of AM and speakers of Indonesian as used in the Moluccas.

Nuauulu Term	Meaning	Synonyms	Meaning	AM Term	Notes
kasipii paru	from AM paru, 'grate'	kasipii honue	new	kasbi paru	eaten only as detoxified flour; intr introduced by Butonese; possible semantic conflation between AM baru (new)/ paru (grate)
kasipii masikunne	yellow	kasipii mantega	margarine	kasbi kuning	name refers to colour of root (IND) parenchyma; eaten only as detoxified flour
kasipii putie	white	-	-	kasbi putih	name refers to color of root parenchyma
kasipii unuhutu	see Notes	-	-	-	refers to <i>Clerodendron</i> (incl. <i>blumeanum</i> Schau.); used medicinally; wood sacred and prohibited for clan Soumori; k.o. kasipii putie
kasipii wasaena	was a, house rafter	-	-	-	-
kasipii kanapua	see Notes	kasbi tiga bulan	three month (IND)	same as Nuauulu synonym	term refers to <i>Gossypium barbadense</i> L. [syn. <i>Gossypium acuminatum</i> Roxb. ex G. Don (k.o. cotton plant); AM term refers to quick maturation period
kasipii buna	see Notes	-	-	-	refers to variegated leaves, as in puni or pun (the aroid <i>Homalomena pendula</i> (Blume) Bakh.f. used to protect people from the spirits of children who have died in childbirth)
kasipii sinsinte	see Notes	kasipii Makuana	-	-	sinsinte refers to variegated lvs of <i>Codiaeum variegatum</i> ; (L.) Rumph. ex A. Juss. this character permits their use as arm decorations in ritual; syn refers to village of Makuana in north Seram
kasipii msinae	red	kasipii postel	-	-	introduced through Ruatan transmigration area by Bandanese or from Pelauw (Haruku)

Nuauulu Term	Meaning	Synonyms	Meaning	AM Term	Notes
kasipii wamate	k.o. bamboo	-	-	-	refers to resemblance of leaf to k.o. bamboo, probably <i>Gigantochloa atter</i> (Hassk.) Kurz
kasipii kasitena	sweet potato	-	-	kasbi patatas	so-called because of resemblance of roots and root system to <i>Ipomoea batatas</i> (L.) Lam.; k.o. kasipii putie ; from Wai Pia
kasipii hata metene	black stem	Hatumeten	[toponym]	-	possible lexical conflation of two terms
(kasipii) posteli	from Dutch, but see Notes	-	-	-	said to be introduced by Butonese; term is certainly of Dutch origin, maybe an elision of 'bastel' (an early twentieth century variety developed at Buitenzorg), from bestelling , or from 'post' or posteran , meaning guard post
posteli tone	k.o. garden fence	-	-	-	-
posteli upone	plant tip	-	-	-	-
kasipii Super Mie	see Notes	-	-	-	so named because, like the instant noodles with the same brand name, roots take just a few minutes to boil; from Baubau (Buton)
kasipii mata rase	-	-	-	-	a folk-variety no longer cultivated in Rouhua, but found along stream edges

we suggest that it would be accurate to report the existence of around 17 terminologically distinct types.

Figure 2 provides an outline Nuauulu folk classification for cassava based on terminological distinctions. However, the range of types, especially given that most reflect clonal variation, means that these cannot be adequately represented as a taxonomy, and most likely are best represented as a multidimensional paradigm of cross-cutting features based on a range of characteristics (cf. Iskandar & Ellen 1999). Nuauulu terminology for describing cassava variation involves distinguishing key diagnostic parts of the plant, which are not necessarily the terms used to describe the botanically comparable parts of other plants, and do not precisely map onto scientific plant anatomical nomenclature. However, for cassava: **huae** is fruit, **kanie** seed, stem cutting or other reproductive material (AM **bibit** or **stek**), **naunai** flower, **totue** leaf, **kaie** petiole, **ai (u) kune** main stem (as in woody plants), **namte** root and **isie** the swollen storage organ (literally meaning 'inside'). The characteristics attributed to each cassava plant recognized as a distinct folk category are set out in Table 2. To summarize, the main diagnostic perceptual character-

istics are: leaf size and shape; color and texture of petiole and stem; appearance of root parenchyma (AM **isi**), periderm and cortex. In addition, toxicity, taste of both raw root and leaf may be relevant, as may be the softness or hardness of the root, productivity, maturation time, storability and cooking time.

Depending on what characteristic is stressed, so the shared core classification will vary to reflect this. This can be seen in Figure 2 in relation to **kasipii putie**. For some people this is an intermediate level category that incorporates all folk-varieties that have white root parenchyma, and sometimes also a white stem and petiole. Thus, Retano told the first author that there are four kinds of **kasipii putie**: **wamate**, **kanapua**, **postel (putie)**, and **wasaena**. Others treat the various sub-types as distinct folk-varieties and do not place them in such an over-arching category. For others there is a cross-cutting classification, such that use of the term **putie** always refers to root parenchyma, and the term **wasaena** to leaf shape and other external characteristics. Two names, with histories that suggest a recent introduction, refer to 'bitter' folk-varieties and are only used when the toxins have been strained out. The

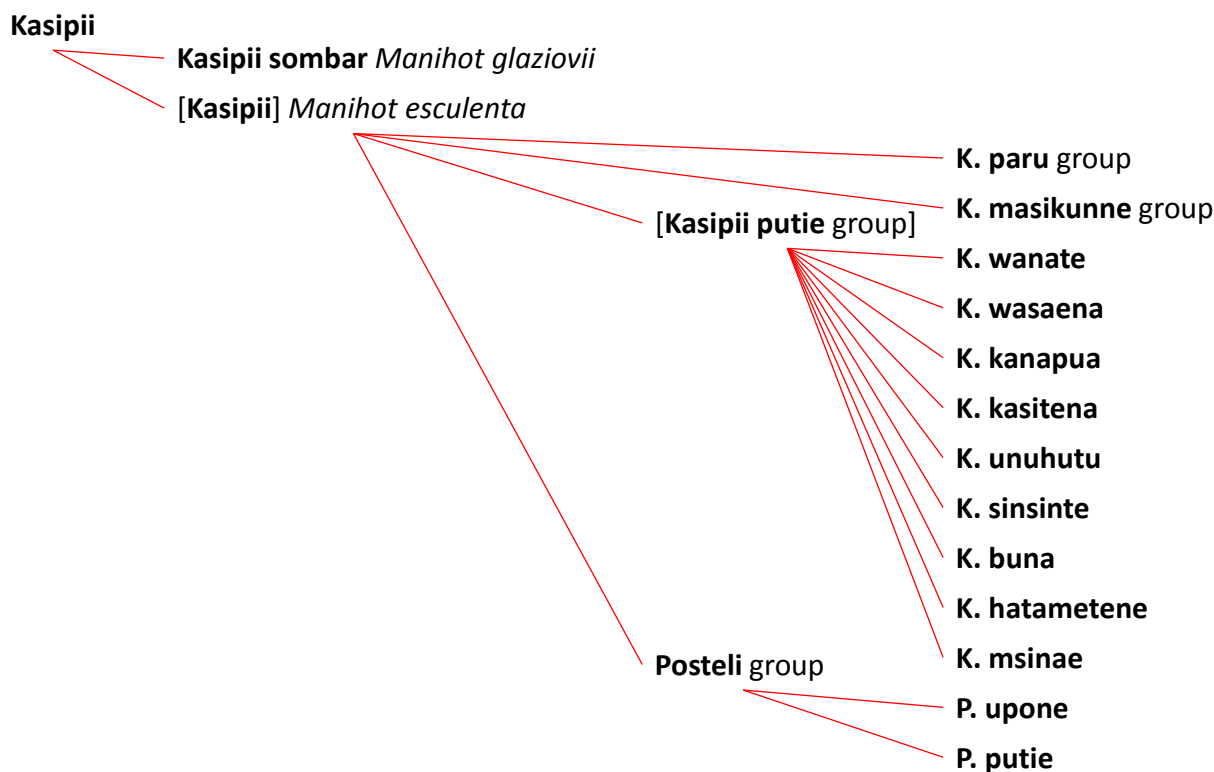


Figure 2. Indicative folk classification of Nuauulu category **kasipii** in Eastern Indonesia.

Table 2. Nuauulu cassava folk-variety names documented in Rouhua 2009, illustrating selected and simplified perceptual characters based on color and salient functional features. Key: w = white, b = black, r = red, y = yellow, r/w = red-dish white, w/y = whitish yellow.

Nuauulu Term	Plant Parts					Other characteristics
	Root Parenchyma	Periderm	Cortex	Petiole	Stem	
kasipii unuhutu	w	w	r	-	w	roots: small (low edible content)
kasipii paru [1]	w	-	w	y	-	leaves: long (same as wanate); roots: large (high edible content), bitter
kasipii paru [2]	w	-	-	y	-	leaves: fine; roots: bitter
kasipii postel	w	-	-	r	-	roots: few (but high edible content); tall, fast-growing; stem lighter than paru , otherwise same outward characters
posteli tone	w	-	-	-	-	-
posteli putie	w	-	-	-	-	-
kasipii wanate	w	-	r	-	-	leaves: long (same as paru)
kasipii masukunne [1]	y	-	y	y	-	-
kasipii masukunne [2]	y	r	y	-	-	-
kasipii wasaena	w	-	w/r	-	-	roots: largest of all folk-varieties, soft parenchyma
kasipii kanapua	w	-	-	w/y	-	-
kasipii putie	w	-	r	-	-	-

Nuauulu Term	Plant Parts					Other characteristics
	Root Parenchyma	Periderm	Cortex	Petiole	Stem	
kasipii kanapua	w	-	-	-	-	leaves: short
kasipii sinsinte	w	-	-	-	-	leaves: variegated
kasipii msinae	w/r	r	r	r	-	-
posteli upone	w	-	-	-	-	-
kasipii hata metene	w	-	b	-	-	-
kasipii kasitena	w	-	-	-	-	-
kasipii buna	w	-	-	-	-	leaves: variegated
kasipii mata rase	w	-	-	r	w	good root productivity, and robust (see Table 1); otherwise same as wasaena

lexical marking of toxicity implies a covert distinction in the folk classification, but this is not consistent. Names and the meanings of names are often matters for disagreement.

Plant height and root size are not, on the whole, good distinguishing characters. Some clones are regarded as 'short', often meaning that they will yield roots when still less than a meter high, or will flower when short. Similarly, yields can be enormously variable, and depend more on local ecology (soil nutrients, soil hardness, rainfall, stoniness, time of harvesting, co-planting regimes). All folk-varieties will have poorer yields in hard soils, and root size tends not to vary consistently in relation to folk-variety. Having said as much, people do claim that different folk-varieties have different yield potentials. For example, one **masikunne** plant yielded 6 roots at 2 kilos, which was thought to be usual, while **wasaena** is reputed to have the largest roots, **unuhutu** amongst the smallest, with **posteli** said to yield only small numbers. Nuauulu agree that, as a rule, high yields (in terms of overall weight, number of roots per plant and length of root) tend to be associated with swiddens that have been cut from mature forest, and that yields decrease as gardens get older, or in gardens cut from secondary growth, that have been planted many times before. Among the other folk-varieties, **kasipii mata rase**, found on ex-garden land, for example near streams, was formerly much grown, but is now scarce. It tends not to thrive in dry conditions as the stems dry out and die, but it is otherwise hard to kill off. In the past it was planted and replanted once or twice and then discarded.

There do not appear to be any major differences between the sexes in terms of the distribution of knowledge regarding cassava, though given the role of females in gardening and, nowadays, in marketing, it might be imagined that they have a more extensive knowledge. Variation is less

obviously linked to socio-economic difference than to differences between individuals given their personal experience and priorities in different aspects of what is a broad-spectrum subsistence strategy. For example, Saete, the present village headman, does not know **unuhutu**, knows **sinsinte** but does not grow it, and would grow **kanapua** if he had access to the stem cuttings.

Nuauulu Cassava Management Practices

It is not certain when cassava entered the Nuauulu food system, but it was a significant element in swiddens and in diet by 1970-71. At this time Nuauulu tended to plant cassava at the end of the first year swidden season, generally not before 300 days after the first planting of green vegetables and after taro, yams and sweet potato (Ellen 1978:161-7). This pattern has not changed much in 40 years. As a garden matures towards the end of the first year the species diversity will increase. However, on the basis of a comparison of garden maps made in 1970 and 2009, the proportion of land devoted to cassava has increased, and cassava has tended to be planted earlier. There has also been an increase in the number of cassava folk-varieties recorded over the period. In 1971 five were recorded (Ellen 1973), though this is unlikely to have exhausted the number then in circulation; in 1996 11, and by 2009 this had increased to about 16. Although Nuauulu still widely express a preference for sago and other starchy roots as food, cassava produces relatively well on soils of lower fertility, the window of opportunity for harvesting is much longer, many folk-varieties can be left in the ground longer before harvesting, and it permits a smooth transition to fallow.

Nuauulu tend to mix many cultivated species, and planting decisions tend to be about the ratios of these rather than of folk-varieties of individual species. In 2009 Ellen com-

pared the planting preferences for five individuals, who were asked to freelist their top five folk-varieties, and also examined the composition of five gardens. In the freelist exercise individuals often felt unable to rank the full five requested. Of the top three ranked, **masikunne** was the most frequently mentioned (5), followed by **wasana** and **paru** (3 each), **putie** (2) and **posteli** (1). Of those top-ranked, **putie** was the most common (2), followed by **wasana**, **masikunne** and **paru** (1 each). The reasons for not planting a particular type were often the unavailability of stem cuttings rather than a positive preference for something else.

Stems of cassava are used here as an estimate of number, as identifying discrete plants is often difficult because they are often multi-stemmed, and self-propagate through subterranean roots that may give rise to new stem clumps away from the mother plant. In terms of swidden composition, one first year garden of between 0.5 and 1 hectare contained approximately 116 cassava stems of which the overwhelming proportion (100) was **putie**, with 11 **masikunne** and 5 **paru**. Another larger mixed swidden on flat or gently rising land contained approximately 400 **wasana**, **masikunne** and **paru**, but mostly **wasana** and **masikunne**. In a second year swidden, cassava had already been replanted along a streamside. This was mostly **putie** (200 stems), but with some **masikunne** and **paru**. A mixed 6 month old swidden with at least 11 crop species contained **masikunne**, **paru**, **wasana**, **putie**, **hata metene**, and **kanapua**, in roughly equal proportions, but probably more **masikunne** than anything else, and with the largest single patch devoted to **paru** (100+ stems). A four month swidden in the upstream area of the Rouhua river was mainly *Xanthosoma*, chilli and banana, but also contained 50 cassava stems of young **wanate**, about 30 stems of **masikunne** and a little **paru**. However, there was a lot of 'wild' unmanaged mature **wanate** in an adjacent old garden.

People say they would plant more folk-varieties if they could get the stem cuttings. On the whole, people plant by default, using whatever germplasm they have most of, though preferences must gradually influence the stock that is available. Moreover, what folk-varieties there are in a swidden at any one time is sensitive to highly seasonal factors, given its role as a fallback food. The outcome is a distribution of great patchiness, and a preference for diversity whatever the virtues of particular types.

All cassava diversity derives from the selection of clonal folk-varieties through stem cuttings. Stem cuttings are taken as each plant is harvested, replanted directly if the swidden is still regarded as having a future, stored in a garden hut, or often left laying on the ground half prepared for planting later. Where cassava is left unharvested and unmanaged it becomes lignified and weedy, and is not only found in old swiddens but along the wayside. Where discarded material is thrown, for example along the edges

of gardens, streamsidess and pathsides, older folk-varieties may persist, as here it has more opportunities to flower and reproduce sexually than in the active gardens. Flowering cassava plants are rare in Nuauulu swiddens. The reasons for this are not entirely clear, though flowering is undoubtedly stimulated by more challenging soil conditions, while it is known that premature abortion of inflorescences may prevent flowering (Velkamp & de Bruijn 1996:109).

The main risk factors encountered in Nuauulu cassava cultivation concern ensuring that most of the sweet folk-varieties are harvested at the period of maximum productivity, and before roots begin to lignify. Pig predation is also an issue, but mainly for the sweeter types: **wanate** in particular was mentioned in this connection. In some areas with high soil water content (e.g., Somau) cassava will rot, and these areas tend to be avoided. Insect pests are not perceived to be a problem though the caterpillar **une putute** (Ellen 1993: 172) is known to eat the leaves.

Nuauulu say that most cassava folk-varieties can be stored for up to two days if they have an abrasion, and up to seven days if the periderm is intact. Also, wet roots will not store as long as those that are dry, and deliberate drying will allow longer storage. **Paru** can be left for up to one hour in a sack and then sun-dried. Unless not properly dried, they will not be particularly bitter to taste at this stage. As the roots of **paru** do not rot under normal soil conditions and neither do they lignify, they can be left in the ground longer and often grow to enormous sizes. Ellen measured stems in quite young gardens at 5 cm diameter and 400 cm tall.

Seven males and five females, each from a different household, were asked to rank their taste preferences for different folk-varieties of cassava. On the whole, subjects found it difficult to rank beyond two or three types. This is partly because, apart from the distinctions between bitter and sweet, and between some sweet folk-varieties in terms of softness and palatability, taste is not a significant factor. Folk-varieties at rank 1 were weighted by four, those at rank 2 by three, and those at rank 3 by two, in order to obtain a simple measure of overall preference. The results are shown in Table 3.

It can be seen that there was an overwhelming preference for the sweet folk-varieties **wasana** and **masikunne** amongst both males and females, while the bitter folk-variety **paru** was consistently ranked lower. Other sweet folk-varieties rarely featured in preferences. Looking at individual responses, some ranked **masikunne** higher than **wasana** and others **wasana** higher than **masikunne**. A few ranked **masikunne** and **wasana** equal first, but all ranked **paru** lower than these two.

The consumption factors influencing Nuauulu cassava management are not taste alone but also incorporate pro-

Table 3. Nuauulu taste preferences for different cassava folk-varieties (*Manihot esculenta* Crantz) (N subjects = 12). Note: Data for seven males and five females, each from a different household. Subjects were asked to rank their taste preferences for different folk-varieties of cassava. Folk-varieties at rank 1 were weighted by four, those at rank 2 by three, and those at rank 3 by two, in order to obtain a simple measure of overall preference.

Cassava folk-varieties	Overall	Male	Female
Wasaena	38	22	16
Masikunne	30	18	12
Paru	11	05	06
Wanate	06	03	03
Kanapua	04	04	
Posteli	02	02	
Hata metene	02	02	

cessing properties. Thus, both **masikunne** and **wasana** were reported by several subjects as being best for boiling and frying, while **paru** generally scored low because it takes some effort to prepare. Nuauulu generally boil or fry sweet cassava folk-varieties (that is all those other than **paru**). Occasionally they will bake the same in the fire, especially when in the forest or swidden where cooking tools may not be available. **Paru** is the only folk-variety used for **suami**, the Butonese term used for the slightly sour-tasting bread made by grating and pressing the fermented flour. By contrast, sweet **wasana** is favored for **saena** (AM **sinoli**), made from heating cassava flour with grated coconut, although **paru** is sometimes used as well.

Kei cassava terms and categories

Inhabitants of Debut describe bitter cassava as **enbal** (for which we have collected at least 16 distinct folk-varieties) and sweet cassava as **kasbi** (for which we have also collected at least 17 distinct folk-varieties). **Enbal** grows better on drier and poorer soils, and is more resistant to pig depredations. Subjects insisted on separate preference rankings for **kasbi** and **enbal**, but as with the Nuauulu, management factors were rated more important than taste. Debut farmers are aware that toxicity is variable genetically and heavily micro-environmental. All **enbal** is detoxified through grating, pressing, drying and cooking, and few deaths or long-term ill-effects are reported (Soselisa & Ellen n.d.).

What is immediately striking about Kei terminology and classification of cassava is the absence of a single clear unambiguous overarching term to describe all folk-varieties. For many subjects, the Kei term for *M. esculenta*

is **enbal**.⁴ The category includes *M. glaziovii*, a recent introduction to Kei, which is called variously **enbal getah**, **kasbi karet** or **enbal karet** (literally 'rubber' **enbal**, referring to the trunk exudate), or **enbal watan** ('wild'), because its roots are regarded as inedible. However, the term **kasbi** is also used to refer to the entire range of types, cognate with AM **kasbi**. Some people say that **kasbi** is a type of **enbal**: there is **enbal sursur** or **sorsor** (sometimes **enbal parut**, AM 'grated') and **enbal kasbi**. **Enbal kasbi** is alternatively described in AM as **enbal rebus** or **enbal makan**. We conclude that the consensus view is that the term **enbal** is used polysemously, to refer: to (a) cassava as a whole, (b) bitter folk-varieties in contrast to **kasbi**, and (c) the biscuits made from bitter cassava. Nevertheless, the boundary between **enbal** and **kasbi** is permeable and often indistinct, some **kasbi** roots being inedible after a year because of accumulated toxicity, while some folk-varieties of **enbal**, such as **ngangiar**, have roots that some subjects say can be eaten if boiled and if they are young enough. The terms elicited during all fieldwork phases are listed in Table 4.

Debut Kei terminology for describing cassava variation, like that of the Nuauulu, involves distinguishing key diagnostic parts of the plant, which are not necessarily the terms used to describe the botanically comparable parts of other plants, and do not precisely map onto scientific plant anatomical nomenclature. However, for cassava: **vuan** is fruit, **vatu** is seed or other reproductive material (IND **bibit**), and stem cutting is **enbal ngain naban** (**ngain naban** = lit. 'stem seed'; AM **stek** or **batang bibit**); **fuun** is flower, **roan** is leaf, **faar** is petiole, **ngain** is main stem (in the case of woody plants), **wa'ar** is root and **ihin** refers to the swollen storage organ (literally meaning 'flesh', 'inside'). Color terms are prominent indicators, particularly [**nga**]metan (black), **ngangiar** (white), **vulvul** (red) and **tom** (yellow). Local characterization of the different folk-varieties recognized is set out in table 5.

Kei Cassava Management Practices

General agricultural practices in Debut can best be described as small-scale swiddening on secondary growth scrub. We examined plots on the village fringe, in locations about 10-20 minutes walk from the village, and in the vicinity of a government-sponsored dryland agricultural project (Soselisa & Ellen n.d.), each of which had slightly different characteristics. The general pattern, however, is that vegetation is cleared on an area not exceeding one hectare and burned, and crops planted for a couple of years, and then left to rest. *Tectona grandis* L.f. (IND **kayu jati**) trees are a particular feature of cultivated areas, where they are used as boundary mark-

4. The orthography for Kei words mainly follows that adopted by Ed Travis in his unpublished 'Draft Kei-English dictionary – 28 Jan 2011', and we thank him for permission to access this unpublished manuscript. We have departed from this standard in particular cases, where advised to do so by authoritative local speakers and writers of the language.

Ellen & Soselisa - Socio-ecological Concomitants of Cassava (*Manihot esculenta*) Diversity, Local Knowledge and Management in Eastern Indonesia **25**

Table 4. Kei terms for folk-varieties of *Manihot esculenta* Crantz, Debut 2009. Language key: AM, Ambonese Malay; IND, Indonesian. Note that names in AM are often the same as in standard IND. Therefore, here AM should be understood to refer to names that have come from speakers of AM and speakers of IND in the Moluccas. Codes preceded by R (Rouhua) and D (Debut) in final column refer to leaf samples extracted for DNA analysis.

Kei Term	Meaning	Synonym	Meaning	Notes
A. Enbal				
enbal lislis	fine, slender [refers to leaflet]	lislis	ideolectal variant	D24
enbal lislis ngain ngangiar	white stem	enbal lislis batang putih	white stem(AM)	D21
enbal lislis ngain ngametan	black stem	enbal lislis batang hitam	black stem (AM)	D19
enbal ngangiar ulin ma'afa	white; thick skin [root cortex]	enbal ngangiar kulit tebal	thick skin (AM)	D9, D26
enbal ngangiar har'u	white; ancient	-	-	D22 [see D25]
enbal hukun hail	breadfruit juice [refers to stem exudate]	-	-	D11; breadfruit, <i>Artocarpus altilis</i> (Parkinson) Fosberg
enbal ngangiar vaar vulvul	white; red petiole	enbal putih batang merah	white; red petiole (AM)	D17
enbal waleu	-	-	-	D7
enbal Tayad	from Tayando [toponym]	-	-	D3, D16
enbal tepong	tepong = flour, powdery (AM)	enbal Namar	from Namar [toponym]	D4, D8; tepong refers to texture of root at certain age
enbal tom har'u	yellow; ancient	-	-	D10
enbal ngangiar tom	white; yellow	-	-	D15
enbal Loon roan ket	from Loon [toponym]; short leaf	enbal Loon daun pendek	from Loon [toponym]; short leaf (AM)	D12
enbal Loon roan baloat	from Loon [toponym]; long leaf	enbal loon daun panjang	from Loon [toponym]; long leaf (AM)	D13
enbal paped	sago porridge	-	-	flour formerly consumed in the same way as sago porridge (AM, papeda)
enbal Ngabub	from Ngabub [toponym]	-	-	-
B. Kasbi				
kasbi nas	ngunas , frying oil; nas , sugar	-	-	D18; [2 kinds]
kasbi nas daun bulat pendek	short round leaf (AM)	-	-	-
kasbi nas putih	white (AM)	-	-	D29; from Seram and Ambon

Kei Term	Meaning	Synonym	Meaning	Notes
kasbi naf ay	woody [refers to root]	nas bakayu	woody (AM) [refers to root]	D20
kasbi Mabut	alias of person who brought cutting	kasbi Tapa	town on Babar	D14; Mabut is a nickname for an individual with albinism or white scar tissue
kasbi putih	white (AM)	-	-	D31; from Seram
kasbi tom	yellow	kasbi kuning telur	egg yellow (AM)	D5
		kasbi kuning	yellow (AM)	
kasbi tom har'u	yellow; ancient	-	-	-
kasbi tom mas	yellow; gold	kasbi tom kuning tua	dark yellow (AM)	D30
kasbi tom vaar vulvul	yellow; red petiole	kasbi vulvul	red petiole	D28; from Seram 2000
kasbi tom (dari Namar)	yellow	-	-	D32; from Namar
kasbi Ambon	from Ambon [toponym]	-	-	D23
kasbi presiden [1]	president (IND)	-	-	D6; from Warwut (Kei Kecil)
kasbi presiden [2]	president (IND)	-	-	D34; from Rumadian (Kei Kecil)
kasbi ngangiar	white [refers to all characters]	-	-	D1; 2 un-named subtypes
kasbi 'enbal'	(like) enbal	-	-	D2
kasbi kapas	cotton (wool) (AM)			D27; from Ambon around 2000
kasbi Passo	from Passo [toponym]	kasbi putih kuning	white yellow (AM)	D33; Passo is town on Ambon island

Table 5. Some cassava (*Manihot esculenta* Crantz) folk-varieties in Debut, 2009: names (excluding synonyms) and selected and simplified morphological characters based on color. Key: w = white, b = black, r = red, y = yellow, r/w = reddish white, w/y = whitish yellow; k.o., kind of.

Name	Plant Parts						Other characteristics
	Root Parenchyma	Periderm	Cortex	Petiole	Stem	Leaflets	
A. Enbal							
enbal lisis ngain ngangiar	w	b	w	r	w	slender	good storage roots (2-3 year in soil), highest toxicity; flowers rare
enbal lisis ngain ngametan	w	b	w	r	b	slender	roots as ngain ngangiar ; leaflets longer than ngain ngangiar ; flowers rare; favored for bubuhuk (k.o. food)

enbal ngangiar ulin ma'afa	w	b	w	w	w	round	roots: good storage; flowers rare
enbal ngangiar har'u	w	b	w	w	w	round	flowers rare; old local variety
enbal hukun hail	w	b	r	w	w	round	flowers always; favored by pigs
enbal ngangiar faar vulvul	w	b	w	r	w	colored tips	flowers never
enbal waleu	w	b	w	w	b	-	flowers always; old local variety
enbal Tayad	w	b	w	w/y	b	dark red	roots: fast-growing, good storage; good (white) flour
enbal tepong/ Namar	w	w	w	w	w	-	roots optimal harvest at 5-6 months, deteriorate after 7; flowers rare; old local variety
enbal tom har'u	y	b	w	r	r	-	flowers rare; old local variety
enbal ngangiar tom	y	b	w	w	w	-	-
enbal Loon roan ket	w	b	w	r	w	black tips	rapid root maturation, good productivity; flowers never
enbal Loon roan baloat	w	b	w	w	w	-	roots occasionally woody; flowers never
enbal paped	w	b	w	w	b	-	stem unbranched; extinct in Debut
enbal Ngabub	-	-	w	b	b	black	roots: large, 3 yr maturation period
B. Kasbi							
kasbi nas putih	w	b	w	r	w	-	roots: flowers at 3 months
kasbi nas bakayu/naf ai	w	b	w	r	r	-	roots: few; flowers always
kasbi nas	w	b	w	r	r	round	flowers: always; favoured for frying and eating with sugar
kasbi nas daun bulat pendek	w	b	w	r	w	round/ short	roots: high productivity; extinct in Debut
kasbi mabut/Tepa	w	b	r	r	w	-	roots: good food content after 6 months; flowers 3 times; from 3 branches indicating that roots are produced; stem red when young
kasbi putih	w	w	w	w	w	-	roots: flowers at 2 months can be harvested at 3 months
kasbi tom	y	b	w	r	w	round	crunchy roots; always flowers
kasbi tom har'u	y	b	w	r	r/w	-	extinct in Debut
kasbi tom mas	y	b	y	y	w/y	round	flowers at 6 months
kasbi tom faar vulvul	y	b	w	r	w	-	flowers at 6 months
kasbi tom/Namar	y	b	w	r	w	round	leaflets: wrinkled tips
kasbi Ambon	w	b	r	r	r	round	roots: average of 10 per plant; always flowers
kasbi presiden [1]	w	b	r	r	w	round	-
kasbi presiden [2]	w	w	w	w	w	-	-
kasbi enbal	r/w	b	w	r	w	-	plants: bitter
kasbi kapas	w	w	w	r	r/w	-	flowers at 6 months;
kasbi Passo	y	w	w	r	w	-	plants: still non-lignified at 12 months

ers and living fences, provide shade and are harvested for firewood.

The swiddens are mixed (predominantly with papaya, maize, *Vigna sinensis* (L.) Savi ex Hassk., coconut, banana and taro), but with a predominance of cassava. We collected data on number and combination of folk-varieties for a non-random but indicative selection of 16 plots. In 13 of these containing **enbal**, the range was between 1 and 9 folk-varieties, with a mean of 3.15. Different kinds of **enbal lislis** were the most frequently planted (10 plots) with **enbal Tayad** at 9 plots. In eight of the 16 plots containing **kasbi**, the range was between 1 and 5 folk-varieties, with a mean of 2.25. Overall, in all 16 plots sampled, the range was between 1 and 9 for all cassava folk-varieties, with a mean of 3.69. Some farmers prefer to plant either exclusively **kasbi** or **enbal** in one plot, though others (perhaps most) display a combination. However, in all cases, **kasbi** and **enbal** will be segregated within the plot. Different folk-varieties are planted in separate intermingled patches often with up to three-month intervals between patches for the duration of the life of the swidden. Mixed plots are preferred as they enable cassava to be harvested in rotation, provide for quick results and continuous availability, even if some folk-varieties perform poorly. One garden of about 1 hectare on the village fringe was mixed but visibly arranged in discrete patches of **enbal lislis** (3 months after planting), **enbal ngangiar** (already 12 months since planting and to be harvested in October), **kasbi singkong** (already 12 months since planting, but edible when boiled), **enbal Tayad** (to be harvested in October), **enbal ngangiar** (38 stem cuttings that will have to wait a year to harvest), **kasbi tom faar vulvul** (14 stem cuttings), and **enbal lislis** (75 stem cuttings at 3 months). Unlike the Nuauulu, the yellow root **kasbi tom** has low priority, and, for example, none is grown in the agri-project area.

In order to establish planting preferences for cassava folk-varieties, we took the top three preferences indicated by farmers for 16 plots, listing the preferences for **kasbi** and **enbal** separately. This is because farmers generally regarded the two categories to be non-commensurable. In each case, the top preference was awarded 3 points, the second preference 2 points and the third preference 1 point. Where there was an equal preference expressed, each of the folk-varieties concerned was awarded 2 points. For **kasbi**, in 8 of the 16 cases, farmers expressed no preference. Of the eight farmers that did express a preference, the highest preference was for **nas**, followed by **ngangiar** and **Mabut** equally. For 15 of the **enbal** cases all farmers were able to state a preference, overwhelmingly in favor of the quick-growing **Tayad** (21), followed by **lislis ngain ngametan** (12) and then equally **ngangiar har'u** and **ngangiar ulin ma'afa** (6 each). It will be noted that there is a close correspondence between the preference rankings and actual planting patterns recorded. **Kasbi** preferences tended to reflect rapid maturation rate, root productivity and taste, in particular consum-

er preferences encountered in local markets (e.g., **kasbi nas**). **Enbal** preferences tended to reflect longer harvesting period, root productivity and quality, and resistance to pig depredations.

Cassava is thought best planted during November-December, in the wet season after burning in October. **Kasbi** is planted first, as it grows faster, then **enbal**. It is recognized that where you plant a stem cutting may have different consequences for the quality of root, and that this may vary according to folk-variety. So, while soft deep soils generally encourage larger roots in all folk-varieties, in the specific case of **Mabut**, cuttings planted on the edge of water will yield soft roots, though if planted in dry soil will yield hard roots. This was also found to be common to farmer knowledge on Seram and Buano. When a stem cutting is planted it is cut several times in different places to maximize the number of roots. In drier areas it is important for stem cuttings to be planted at an angle and most of them covered with soil. Nuauulu, by comparison are less particular in this respect. There is little grafting of one folk-variety on another, particularly of **enbal** onto **kasbi** rootstocks as suggested by the Department of Agriculture, as the preference is to keep patches of different folk-varieties separate.

Stem cuttings may be kept for several weeks before planting, and whole stems may be stored in garden shelters (**pondok kebun**) until needed to prepare stem cuttings for planting, though ideally these should be stored leaning against the wall and with their bases covered with soil. Also, if the stem cuttings are stored underneath a tree they are less likely to dry out quickly and can be later replanted.

Propagation is virtually always through the clonal planting of stem cuttings. However, while on Seram it was rare to see cassava (except for *M. glaziovii*) flowering and fruiting, this was common in Debut, where cassava will commonly flower. **Enbal** may flower when quite young, even fruiting after 5-6 months, while **kasbi nas putih** will flower at 3 months, and **kasbi putih** at 2 months. Flowering is most likely a feature of drier climatic regimes, an adaptation by plants under stress to ensure reproduction. This is redundant on Seram, where spontaneous vegetative reproduction seems to be more common. Fruiting may often be treated as a sign that there will be a reasonable harvest of roots after four months from planting. With its early flowering, **kasbi putih** can be harvested early, and the appearance of three flowers on the three branches of **kasbi Mabut** indicates that the plant is beginning to produce roots. No attempt is made by farmers to experiment by propagating seedlings that have arisen from fallen fruit, although a few did suggest that if fruits are planted they will likely yield roots. It is widely observed that seed dropped from cassava fruits will be eaten by birds, particularly cockatoos, which will then disperse the seed through defecation. Where F1 seedlings arise from such

seeds people call them **enbal kanar tean**, but note that harvestable roots are seldom found in the first generation, and that such seedlings suffer a high mortality, and therefore farmers tend to neglect them. In practice, of course, it is plausible that seedlings naturally propagated in this way may become incorporated into the germplasm available to local farmers, and thereby increase genetic heterogeneity. McKey *et al.* (in press) suggest another reason why where sexual reproduction is evident it might not be encouraged by farmers: because it encourages frequent inbreeding which might destroy favorable trait combinations conserved in highly differentiated clonal folk-varieties, and because monovarietal patches within swiddens (certainly the rule in Debut) result in the clumping of clonemates. Because pollen is transported mainly between neighboring plants, this tends to result in highly inbred matings, while pollen transferred between highly differentiated folk-varieties in the same plot (again common in Debut) produces highly outcrossed offspring.

Pigs will generally devour roots described as **kasbi**, but are deterred by high levels of toxicity and the woodiness that comes with age in **enbal**. Protective fencing (**ngean**) is rare, but noose-traps (**woar**), sprung spear-traps (**fan-fan**), pit-traps with wooden spikes placed along the edge of a garden (**tar**), or pig lances (**nganga**), are sometimes employed to deter pigs. There are now fewer wild pigs on Kei than 30 years ago, so there is less concern about potential damage, and fewer steps are taken to control for it. Other pests are regarded as manageable, including the parasitic vine **war lanlanit**.

Kasbi can be harvested after three months at the earliest and for a maximum of six months after planting, after which it lignifies and becomes too hard to eat as a whole root. People prefer **enbal** because it can be harvested between 8-12 months and oftentimes after a year (and up to three years), and need not be harvested quickly as it is less likely to lignify.

We collected data from 3 male and 8 female subjects from several different households, who were asked to rank their taste preferences for different folk-varieties. What was immediately apparent, in contrast to Rouhua, was the insistence on separate rankings for **kasbi** and **enbal**, and a preference for distinguishing preferences for **kasbi** in terms of taste, and for **enbal** (which are thought to be similar in taste) in terms of utility for processing. As with Rouhua, on the whole, subjects found it difficult to rank beyond two or three types. Clearly, the insistence on separating **kasbi** and **enbal** influences this, but as with Rouhua it appears that management factors rather than taste are overall more important in preference ranking, though ranking by taste and management preference is by no means consistent. We found that in the **kasbi** group there was a clear preference for **kasbi nas** in terms of taste (emphasizing softness and crispness), followed by **kasbi ngangiar**, **kasbi Mabut** and **kasbi tom**. In the **en-**

bal group, preferences were not so clear, but with **enbal lislis** ranked first overall. A number of subjects claimed that both **enbal lislis** and **enbal ngangiar** made equally good flour and biscuits. Our data are too slight to confidently establish population-wide preferences by folk-variety and these data do not support any judgment concerning preference by gender.

Apart from taste, the food properties of **enbal** mentioned by Debut subjects included its ability to stave off hunger, as like sago the hard biscuits absorb water in the stomach and swell up. Although rice has become a preferred food for many (particularly younger villagers) and is generally available, it is usually combined with **enbal** at most meals. Many in Debut would acknowledge the truth of the proverb, **Makan nasi cepat lapar, makan enbal lambat lapar** ('If you eat rice you will get hungry quickly, if you eat **enbal** you will [only] get hungry slowly'), as well as subscribing to the view that you cannot eat **enbal** without fish.

Comparison of Toxicity Across Different Research Sites

All cassava cultivars, and all parts of the plant, contain cyanogenic glucosides (mainly linamarin) yielding toxic levels of hydrogen cyanide (HCN) by enzymic breakdown. Consequently, drawing a firm distinction between 'bitter' and 'sweet' is hard to justify in scientific terms, as all kinds of intermediates occur (Veltkamp & de Bruijn 1996:108-10). Although the correlation between glucoside content and taste is not straightforward, in local folk classifications this distinction is still important. One of our objectives was to compare the judgments of Nuaulu and Debut subjects as to the toxicity of different cassava folk-varieties with a scientific measurement of toxicity, to determine the reliability and utility of local knowledge embedded in folk classificatory distinctions. We used 'Bradbury' picrate tests on a portion of root to measure ppm (milligrams HCN per kilogram cassava) (Bradbury *et al.* 1999, Egan *et al.* 1998; but see also Ellen & Soselisa n.d. for other references). Hidayat *et al.* (2000) report the use of similar techniques for 179 Indonesian cassava cultivars with a wide geographical distribution, though none from the Moluccas.

The Nuaulu tests were run on 12 August as one batch of nine samples collected between 9 and 11 August, and the results read 16 hours later on 13 August. The blank was 0 ppm of HCN and the standard 50, so the results were accepted as accurate. The Debut tests were run in two batches: batch 1 of 15 samples on 22 August and batch 2 of eight samples on 23 August, the results in each case being read 16 hours later on 23 and 24 August respectively. The blank for both batches was 0 ppm and the standard for both batches 50 ppm, so the results were accepted as accurate. The detailed results are presented in Ellen & Soselisa (n.d., tables 2 and 3). We found that for nine Nuaulu folk-varieties mean toxicity was 151 ppm (range = 10-300 ppm) and for 23 Kei folk-varieties 306

ppm (range = 20-800). There was a considerable amount of overlap between those folk-varieties designated **kasipii** (all Nuauulu), **kasbi** ('sweet' Debut) and **enbal** ('bitter' Debut), though **kasbi** showed a mean of 206 ppm and **enbal** a mean of 360 ppm. The one Nuauulu folk-variety marked out as 'bitter', **kasipii paru** (from Buton) was 200 ppm (Ellen & Sospelisa n.d., Figure 3).

What is evident in comparing folk classifications of cassava in Rouhua and Debut is the importance of the distinction between **kasbi** and **enbal** in Debut and the absence of a comparable distinction in Rouhua. In the Debut data there are judgements made by individuals as to the toxicity of particular folk-varieties of **enbal**, of the kind '**enbal tepong** is more poisonous than **enbal lislis**'. At one level, this seems to reflect the larger number and importance of bitter folk-varieties in the Debut case, but can also identify perceptual distinctions that support this difference in the classification, other than toxicity itself. The general literature on *M. esculenta* provides strong warnings as to the difficulty of finding stable morphological criteria that correspond with the difference between 'sweet' and 'bitter', since the distribution in toxicity is continuous across sub-specific variants and highly sensitive to local ecological conditions, and indeed conditions in the micro-habitat of individual plants and of roots of a single plant.

In both Rouhua and Debut, but more so in the latter, leaf shape was thought to be a helpful indicator of potential toxicity. We found a variety of compound leaf shapes in Rouhua and Debut, all of which can be described as comprising a number of leaflets of elliptical or oblanceolate form. Overall size of leaves and the number of leaflets on an individual leaf, ranging between three and nine, correlates strongly with plant growth and is not self-evidently a helpful indicator of taxonomic difference, and subjects in both study sites noted that young leaves of all types are reddish when young but become green with maturation, and that single leaflets seem to occur on some old plants. However, subjects also consistently identified certain leaf shapes and other characters as typical of particular folk-varieties, and groups of folk-varieties; and in Debut some subjects claimed a relationship between hard soil and 'hard' leaf, and soft soil and 'soft' leaf. There are

other studies of diasporic cassava that support this finding (Oluwolea *et al.* 2007, Rosling 2003).

In order to test whether leaf shape had any general relationship to toxicity, and specifically the distinction between **kasbi** and **enbal** in Debut, we measured the length and breadth of the median or nearest to median leaflet in centimeters and divided length by breadth to give an index of shape. Broadly, this meant that the higher the index the narrower the leaflet. Of eight specimens from seven different folk-varieties in Rouhua the index range was 2.9-9.5 with a mean of 4.35. The only specimen (**kasipii paru**) in this sample indicated lexically as being problematically toxic had an index of 3.2. By comparison, of the 14 Debut specimens from 13 folk-varieties, 10 were designated **kasbi** (i.e., low toxicity) and 4 **enbal** (high toxicity). **Kasbi** specimens had a range of 3 - 4 and a mean of 3.6, while **enbal** specimens had a range of 2.6 - 9.33 and a mean of 5.65. Thus, in the Rouhua case, where toxicity is less of an issue, the index for the more toxic folk-varieties are not evidently distinguishable from the rest, and our one measurement is less than the mean. However, in the Debut case, despite a large overlap in the range, the means were significantly different, and show evidence of an association between leaf shape and perceived toxicity. The Debut **enbal** mean is higher and the mean for **kasbi** lower than the Rouhua mean for all cassava, while the Debut mean for **kasbi** is higher than the one Rouhua folk-variety culturally-flagged for toxicity. This reflects the importance of folk-varieties perceived as toxic in the Debut case compared with Rouhua (Table 6).

Finally, we also tested at a third site, Buano, in order to obtain some sense of whether our general hypotheses were realistic. Sospelisa had undertaken fieldwork on Buano in 1998-9, at a time of environmental instability and communal conflict (Sospelisa 2007). Population displacement and economic disruption placed stress on resources, with cassava becoming of increased importance during dry periods, and particularly at the time of unrest. Bitter cassava (**kasbi Obi**) in particular appears to have become increasingly important during this period. Sospelisa returned to Buano Selatan at the beginning of December 2009 and conducted picrate tests on 10 local cassava folk-varieties (two of which were flagged as 'bitter'). Because of ex-

ceptionally dry seasonal conditions many cassava gardens were not productive. Buano Utara no longer produced **sagu kasbi** (fermented flour for making biscuits) due to a decrease in

Table 6. Comparison of leaf size (Range & Mean) index for *Manihot esculenta* Crantz and *Manihot glaziovii* Müll. Arg. folk-varieties in Rouhua and Debut.

Location	Species	Specimens (N)	Folk groupings	Folk-varieties (N)	Range (cm)	Mean
Rouhua	<i>M. esculenta</i>	8	all folk-varieties	7	2.9-9.5	4.35
		1	toxic only	1	3.2	3.2
Debut		10	kasbi	9	3-4	3.6
		4	enbal	4	2.6-9.33	5.65
Rouhua	<i>M. glaziovii</i>	2	kasipii sombar	1	2.25-2.3	2.27

the number of gardens, partly attributed to pig infestation. While the population of Buano Selatan had remained unchanged since 1998, the population of Buano Utara had more than doubled, from about 5000 to almost 11,000 in 2009. A new settlement had been established at Tanjung Kawa with more productive swiddens producing **sagu kasbi** (from both sweet and bitter cassava) for the inhabitants of Buano itself. On 10 December Soselisa recorded the following results for Buano Selatan: **kasbi Obi buku kaluar** (200 ppm), **kasbi Obi biasa** (100 ppm); **kasbi bo-boita**, **kasbi bastel**, **kasbi kuning (batang kecil)** and **kasbi tahalupu** (50 ppm); **kasbi santri putih** and **kasbi putih** (30 ppm), **kasbi ular** (20 ppm) and **kasbi nasi** (10 ppm), giving a mean HCN score of 59 ppm. This mean is much lower than either of those recorded for Rouhua and Debut, with fewer samples and a narrower range. However, the two folk-varieties flagged by local people as bitter have the highest scores.

Comparison of the Agroecology of Research Sites

If we compare the ecology and management of *M. esculenta* in the Nuaulu area of Seram and in Kei Kecil, we can see an interesting pattern of contrasts. The Nuaulu area has higher rainfall, greater forest cover (which allows for the retention of more moisture), higher soil fertility, lower human population density, complex vegetational swiddens with high starch root diversity, while sago remains the primary source of starch. Kei experiences lower rainfall, is characterised by heavy deforestation, savanna, lower soil fertility, and higher human population density. There is lower starchy root crop diversity in swiddens and sago is much depleted. In Debut and Kei generally, sago appears to have preceded cassava. And we can see in the processing and consumption patterns of **enbal** certain continuities, such that the hard briquettes used in mortuary ceremonies and other ritual exchanges in parts of the Kei archipelago (Karttunen 2007) resemble patterns of exchange elsewhere reliant on sago briquettes of similar appearance.

In the Nuaulu case, the ecological profile appears to be correlated with low cassava diversity, a low proportion of bitter folk-varieties, minimal management techniques, little evidence of regular flowering and fruiting, and therefore few volunteer seedlings. In Kei there are high levels of diversity, a high proportion of bitter folk-varieties, extensive management, much evidence of regular flowering and fruiting, and some evidence of volunteer seedlings, even though they are reckoned to be of no significance in introducing new genetic variation into the stock. Although we believe that in general terms the lower number of terms reported for Nuaulu compared with Debut reflects real genetic diversity, we acknowledge with Sambatti *et al.* (2001) that folk classifications tend to underestimate actual diversity, and we suggest Nuaulu do so more than Kei farmers. Indeed, DNA data for a group of folk-varieties from both sites indicates greater genetic diversity for few-

er folk-varieties in Rouhua compared with greater differentiation reflected in folk-variety distinctions in a relatively smaller gene pool for Debut. The former suggests a more relaxed approach and the latter more active selection for phenotypical difference (Ellen & Soselisa n.d., Ellen *et al.* n.d.). Nevertheless, data from both sites confirm the now well-known (Gibson 2009) advantages of folk-variety diversity reflected in perceptual distinctiveness as a strategy for risk management.

Despite these differences, the data from all research sites allow us to draw some tentative observations regarding the emerging biocultural history of cassava diversity in eastern Indonesia. Although toxicity is variable, as much due to micro-environmental factors as to genetics, folk classification provides a framework for making sense of toxicity. Moreover, in Debut there is a strong local correlation between leaf shape and perceived toxicity, and possible selection for perceptual distinctiveness (particularly evident for **enbal lislis**). Local differences in number and type of folk-varieties recorded reflect ecology, environmental change, previous food histories and human population movement. Given the environmental profile and other risk factors, we would expect the Buano data to lie somewhere between Rouhua and Debut. However, the number of folk-varieties and mean toxicity level is the lowest of all three sites, although circumstantial evidence does appear to suggest a greater interest in bitter cassava than in Rouhua.

These correlations are generally consistent with recent work on the chemical ecology of cassava which shows that polymorphism for cyanogen levels facilitates analysis of how costs and benefits of crop defenses vary between different human populations with different management regimes. In the light of this, it is not surprising that in Debut more **enbal** than **kasbi** is planted, and that the ratio of **enbal** to **kasbi** harvested is even greater. High cyanogen levels appear to confer important ecological advantages in terms of pest resistance (Bellotti & Riis 1994), poor soils and low rainfall, and consequent agronomic advantages. Thus, bitterness appears to be selected for where competition is toughest. Such positive factors must be offset against health costs and constraints imposed by high levels of toxicity, and the need for effective detoxification processes or dietary buffers (McKey *et al.* 2010). Moreover, where local populations are under nutritional and economic stress, there are advantages in being able to harvest early-yielding varieties and in diversifying these, which tend to be sweet rather than bitter. We found this to be the case in both Debut and in Buano.

Homeland and Diaspora Compared

If our comparison of Rouhua and Debut can be said to reflect different modalities of biocultural adaptation involving *M. esculenta* within eastern Indonesia, then these data taken together tentatively point to some emerging dif-

ferences in ecology and management between lowland South America and eastern Indonesia, and perhaps in the cassava diaspora more generally. Thus, because the New World represents the area of endemism and original domestication, there is more evidence of interbreeding with wild types (Rival 2001: 66-7) and therefore opportunities for taking advantage of new genetic combinations. Because there are more species of *Manihot* (about 200) and other closely-related Euphorbs, there has also been a longer time for pests to co-evolve as competitors, and for toxicity levels to be selected as a mechanism for coping with this (Bellotti & Riis 1994). Moreover, regular flowering and fruiting has permitted the incorporation of volunteer seedlings (Rival 2001:65) in a way that is absent in our Indonesian sites. Indeed, recombinant volunteers derived from self-set seeds are the main source of genetic diversity and of newly identified landraces in the Amazon (Elias *et al.* 2001b, Pujol *et al.* 2007, Salick *et al.* 1997:12-5), while generally in lowland South America we find a large number of recognized folk-varieties and a greater proportion of sweet to bitter.

In the Old World diaspora there are no wild types, and therefore no cross-pollination. Germplasm is dispersed almost entirely through human agency. Moreover, flowering and fruiting are variable (and in some areas the plant seldom flowers), and there is little evidence for incorporation of volunteer seedlings, either deliberate or inadvertent. Unlike Amazonia (Boster 1984a, Rival & McKey 2008:1120), the paradox of high diversity and clonal reproduction in our research sites cannot be adequately explained as a consequence of sexual reproduction, though none of the cases examined exhibit the local 'hyperdiversity' reported for Amazonia.

Compared with 35 significant arthropod pest species recorded for the Americas, there are only 15 for Africa, and 9 for Asia (Bellotti 2001:211), and three viral diseases in Asia compared with six in the Americas (Calvert & Thresh 2001:238). Indeed, cassava mosaic disease (Calvert & Thresh 2001:252) is the only virus known to be important in Southeast Asia and the Pacific, and in Indonesia a report from 1931 was later revised because the symptoms could be better explained as mineral deficiency. While 38 bacterial, fungal and nematode pathogens have been reported worldwide (Hillocks & Wydra 2001:263, 274), only bacterial blight and one nematode infestation are reported for Asia, and then not thought significant. Thus, the absence of natural competitors and pathogens, whether viral, bacterial or fungal, give cassava the characteristics of an invasive species in many diasporic contexts. Vegetative propagation through stem cuttings is more rapid than sexual reproduction, and the longer the cutting and the more horizontally it is planted, the greater the number of shoots (Velkamp & de Bruijn 1996:108). Moreover, while weeding is necessary to begin with, after three months the plant canopy itself provides sufficient cover to inhibit weed growth. And although its vigorous vegetative repro-

duction means that once introduced it is difficult to eradicate, on balance this vigor increases its value to humans in pioneer and dry marginal environments. Cassava will even shed its leaves in dry periods, but regrow them and resume growth. It can resist severe drought, making it a suitable crop for areas with uncertain rainfall distribution. It can produce reasonable yields continuously on dry, severely depleted and eroded soils, unsuitable for other crops, and on acidic soils with pH ranging from 4.5 to 6.5 and with low organic matter (Onwueme 2001:55), conditions where it has proved particularly valuable in the diaspora. Here, generally, lower numbers of folk-varieties have been recognized, though relatively more folk-varieties and a greater proportion of bitter phenotypes under more challenging agricultural conditions. Population pressure, economic crises and environmental change (Ellen 2007) will likely result in increasing reliance on cassava in Indonesia (see e.g., Hidayat *et al.* 2000). But while there are obviously differences between the biocultural context of the Old and New Worlds (most critically the absence of a long human-plant coevolutionary history outside of South America), this study shows that cultural and natural selection continue to shape cassava diversity through the knowledge, categorization, and valorization of phenotypically expressed differences.

Acknowledgments

This project has been funded by the British Academy ASEASUK Research Committee. Fieldwork was conducted under the auspices of Pattimura University within the terms of a Memorandum of Understanding with the University of Kent. We would like to thank the following: in Ambon: Rosemary Bolton, Hunanatu Matoke, Thomas Namsa and Kristina Ingratubun; in Canterbury: Simon Platten, Paul Gilbert and Rory McBurney; on Seram: Saete Soumori, Anakota, Son, Retaone, and Heunaka; on Kei: Karel Ohoiwutun (Bapa Sekretaris, Debut) and his wife Lina, Tante Agu, Agus Namsa and his wife Tin, Alfons ('Menyala') Yanlean, Mama Biba Jamlean and John Letsoin. We would like to thank Howard Bradbury and Gerard O'Brien for technical advice on the measurement of toxicity

Literature Cited

- Barraud, C. 1985. *Some aspects of millet cultivation in Tanebar-Evav (Kei-islands)*. Unpublished paper delivered at Seminar Penelitian Indonesia Bagian Timur, 23-29 July 1985. Lembaga Ekonomi dan Kemasyarakatan Nasional-LIPI dan UNSRAT.
- Bellotti, A.C. 2001. Arthropod pests. Pp. 209-235 in *Cassava: Biology, production and utilization*. Edited by R.J. Hillocks, J.M. Thresh & A.C. Bellotti. CABI Publishing, Wallingford, United Kingdom.

Ellen & Soselisa - Socio-ecological Concomitants of Cassava (*Manihot esculenta*) Diversity, Local Knowledge and Management in Eastern Indonesia 33

- Bellotti, A.C. & L. Riis. 1994. Cassava cyanogenic potential and resistance to pests and diseases. *Acta Horticulturae* 375:141-151.
- Berlin, B., D.E. Breedlove & P.H. Raven. 1973. General Principles of Classification and Nomenclature in Folk Biology. *American Anthropologist* 75:214-242.
- Boster, J.S. 1983. A comparison of the diversity of Jivaroan gardens with that of the tropical forest. *Human Ecology* 11(1):47-68.
- Boster, J.S. 1984a. Classification, cultivation, and selection of Aguaruna cultivars of *Manihot esculenta* (Euphorbiaceae). *Advances in Economic Botany* 1:34-47.
- Boster, J.S. 1984b. Inferring decision making from preferences and behavior: an analysis of Aguaruna Jivaro manioc selection. *Human Ecology* 12:343-358.
- Boster, J.S. 1985. Selection for perceptual distinctiveness: Evidence from Aguaruna cultivars of *Manihot esculenta*. *Economic Botany* 39:310-325.
- Boster, J.S. 1986. Exchange of varieties and information between Aguaruna manioc cultivators. *American Anthropologist* 88:428-436.
- Bradbury, M.G., S.V. Egan & J.H. Bradbury. 1999. Picrate paper kits for determination of total cyanogens in cassava roots and all forms of cyanogens in cassava products. *Journal of the Science of Food and Agriculture* 79:593-601.
- Calvert, L.A. & J.M. Thresh. 2001. The viruses and virus diseases of cassava. Pp. 237-260 in *Cassava: Biology, production and utilization*. Edited by R.J. Hillocks, J.M. Thresh & A.C. Bellotti. CABI Publishing, Wallingford, United Kingdom.
- Clawson, D.L. 1985. Harvest security and intraspecific diversity in traditional tropical agriculture. *Economic Botany* 39:56-67.
- Donner, W. 1986. *Land Use and Environment in Indonesia*. Hurst, London.
- Egan, S.V., H.H. Yeoh & J.H. Bradbury. 1998. Simple picrate paper kit for determination of the cyanogenic potential of cassava flour. *Journal of the Science of Food and Agriculture* 76:39-48.
- Elias, M., O. Panaud & T. Robert. 2000. Perception and management of cassava (*Manihot esculenta* Crantz) farming system using AFLP markers. *Heredity* 85:219-230.
- Elias, M., D. McKey, O. Panaud, M.C. Anstett, L. Penet & T. Robert. 2001a. Traditional management of cassava morphological and genetic diversity by the Makushi Amerindians (Guyana, South America). *Perspectives for On-farm Conservation of Genetic Resources* 120:143-157.
- Elias, M., L. Penet, P. Vindry, D. McKey, O. Panaud & T. Robert. 2001b. Unmanaged sexual reproduction and the dynamics of genetic diversity of a vegetatively propagated crop plant, cassava (*Manihot esculenta* Crantz), in a traditional farming system. *Molecular Ecology* 10:1895-1907.
- Ellen, R.F. 1973. *Nuaulu Settlement and Ecology: An approach to the environmental relations of an Eastern Indonesian community*. Ph.D. Dissertation. University of London.
- Ellen, R.F. 1978. *Nuaulu Settlement and Ecology: An approach to the environmental relations of an Eastern Indonesian community*. Verhandelingen van het Koninklijk Instituut voor Taal-, Land- en Volkenkunde, 83. Martinus Nijhoff, The Hague.
- Ellen, R.F. 1993. *Nuaulu Ethnobiology: A systematic inventory*. (CSAC Monographs, 6) Centre for Computing and Social Anthropology and Centre for Southeast Asian Studies, University of Kent, Canterbury, United Kingdom.
- Ellen, R.F. 2006. Local knowledge and management of sago palm (*Metroxylon sagu* Rottboell) diversity in South Central Seram, Maluku, eastern Indonesia. *Journal of Ethnobiology* 26(2):83-123.
- Ellen, R.F. 2007. Introduction. Pp. 1-45 in *Modern Crises and Traditional Strategies: Local ecological knowledge in island Southeast Asia*. Edited by R. Ellen (Studies in Environmental Anthropology and Ethnobiology, 6). Berghahn, Oxford, United Kingdom.
- Ellen, R.F. 2010. Why aren't the Nuaulu like the Matsigenka? Knowledge and categorization of forest diversity on Seram, eastern Indonesia. Pp. 116-140 in *Landscape Ethnobiology: Concepts of biotic and physical space*. Edited by L.M. Johnson & E. S.Hunn. Berghahn, Oxford.
- Ellen, R.F. & H.L. Soselisa. n.d. Cassava diversity and toxicity in relation to environmental degradation and food security in the Moluccas. in *Environmental Uncertainty and Local Knowledge: Southeast Asia as a laboratory of global change*. Edited by A.-K. Hornidge & C. Antweiler. Transcript Global Studies, Bielefeld.
- Ellen, R.F., H.L. Soselisa & A.P. Wulandari. n.d. The bio-cultural history of *Manihot esculenta* in eastern Indonesia: Assessing evidence for the movement and selection of cassava germplasm. Submitted.

- Gade D. 2002. Names for *Manihot esculenta*: Geographical variation and lexical clarification. *Journal of Latin American Geography* 1:55-74.
- Gibson, R.W. 2009. A review of perceptual distinctiveness in landraces including an analysis of how its roles have been overlooked in plant breeding for low-input farming systems. *Economic Botany* 63:242-255.
- Hames, R.B. 1983. Monoculture, polyculture, and polyvariety in tropical forest swidden cultivation. *Human Ecology* 11(1):13-34.
- Harris, D.R. 1980. Tropical savanna environments: definition, distribution, diversity and development. Pp. 3-27 in *Human Ecology in Savanna Environments*. Edited by D.R. Harris. Academic Press, London.
- Heckler, S. & S. Zent. 2008. Piaroa manioc folk-varieties: hyperdiversity or social currency. *Human Ecology* 36: 679-697.
- Hidayat, A., N. Zuaraida, I. Hanarida & D.S. Damardjati. 2000. Cyanogenic content of cassava root of 179 cultivars grown in Indonesia. *Journal of Food Composition and Analysis* 13:71-82.
- Hill, R.D. 2004. Towards a model of the history of 'traditional' agriculture in Southeast Asia. Pp. 19-45 in *Smallholders and Stockbreeders: History of foodcrop and livestock farming in Southeast Asia*. Edited by P. Boomgaard & D. Henley. KITLV Press, Leiden.
- Hillocks, R.J. & K. Wydra 2001. Bacterial, fungal and nematode diseases. Pp. 261-280 in *Cassava: Biology, production and utilization*. Edited by R.J. Hillocks, J.M. Thresh & A.C. Belotti. CABI Publishing, Wallingford, United Kingdom.
- Iskandar, J. & R.F. Ellen. 1999. In situ conservation of rice landraces among the Baduy of West Java. *Journal of Ethnobiology* 19(1):97-125.
- Kaartinen, T. 2007. Nurturing memories: The cycle of mortuary meals in an East Indonesian village. Pp. 149-169 in *Kinship and Food in South East Asia*. Edited by M. Janowski & F. Kerlogue. NIAS Studies in Asian Topics, 38. NIAS Press, Copenhagen.
- McKey, D., T.R. Cavagnaro, J. Cliff & R. Gleadow. 2010. Chemical ecology in coupled human and natural systems: People, manioc, multitrophic interactions and global change. *Chemoecology* 20(2):109-133.
- McKey, D. B., M. Elias, B. Pujol & A. Duputié. In press. Ecological approaches to crop domestication. In *Biodiversity in Agriculture: Domestication, evolution and sustainability*. Edited by P. Gepts, R. Bettinger, S.B. Brush, T. Famula, P.E. McGuire & C.O. Qualset. Cambridge University Press, Cambridge.
- Maluku Dalam Angka. 2010. Badan Pusat Statistik Provinsi Maluku, Ambon.
- Maluku Tenggara Dalam Angka. 2010. Badan Pusat Statistik Kabupaten Maluku Tenggara, Tual, Indonesia.
- Monk, K. A., Y. de Fretes & G. Reksodiharjo-Lilley. 1997. *The Ecology of Nusa Tenggara and Maluku*. Periplus, Hong Kong.
- Nutz, W. 1959. *Eine Kulturanalyse von Kei: Beiträge zur Vergleichenden Völkerkunde Ostindonesiens*. Michael Triltsch Verlag, Düsseldorf.
- Oluwolea, O.S., A.O. Onabolub, K. Mtundac & N. Mlingid. 2007. Characterization of cassava (*Manihot esculenta* Crantz) varieties in Nigeria and Tanzania, and farmers' perception of toxicity of Cassava. *Journal of Food Composition and Analysis* 20:559-567.
- Onwueme, I.C. 2001. Cassava in Asia and the Pacific. Pp. 55-65 in *Cassava: Biology, production and utilization*. Edited by R.J. Hillocks, J.M. Thresh & A.C. Belotti. CABI Publishing, Wallingford, United Kingdom.
- Pujol, B., F. Renoux, M. Elias, L. Rival & D. McKey. 2007. The unappreciated ecology of landrace populations: Conservation consequences of soil seed banks in Cassava. *Biological Conservation* 136: 541-551.
- Rival, L. 2001. Seed and clone: A preliminary note on manioc domestication, and its implication for symbolic and social analysis. Pp. 57-79 in *Beyond the Visible and the Material: The Amerindianization of society in the work of Peter Rivière*. Edited by L. Rival & N. Whitehead. Oxford University Press, Oxford, United Kingdom.
- Rival, L, M. Elias & D. McKey. 2000. Perception and management of cassava (*Manihot esculenta* Crantz) diversity among Makushi Amerindians of Guyana (South America). *Journal of Ethnobiology* 20(2):239-265.
- Rival, L. & D. McKey. 2008. Domestication and diversity in manioc (*Manihot esculenta* Crantz ssp. *esculenta*, Euphorbiaceae). *Current Anthropology* 49(6):1119-1128.
- Rosling, H. 2003. Classification of cassava into 'bitter' and 'cool' in Malawi: From farmers' perceptions to characterization by molecular markers. *Euphytica* 132:7-22.
- Salick J, N. Cellinese & S. Knapp. 1997. Indigenous diversity of cassava: Generation, maintenance, use and loss among the Amuesha, Peruvian Upper Amazon. *Economic Botany* 51(1):6-19.

Ellen & Sospelisa - Socio-ecological Concomitants of Cassava (*Manihot esculenta*) Diversity, Local Knowledge and Management in Eastern Indonesia **35**

Sambatti, J.B., M.P.S. Martins & A. Ando. 2001. Folk taxonomy and evolutionary dynamics of cassava: A case study in Utatuba, Brazil. *Economic Botany* 55:93-105.

Sospelisa, H.L. 2007. A comparison of traditional and innovative subsistence strategies on Buano during periods of socio-environmental stress, 1980-2003. Pp. 143-165 in *Modern Crises and Traditional Strategies: Local ecological knowledge in island Southeast Asia*. Edited by R.F. Ellen. Berghahn, Oxford.

Sospelisa, H.L. & R.F. Ellen. n.d. The management of cassava toxicity and its socio-cultural profile in the Kei Islands, eastern Indonesia. [In prep with the authors.]

Veltkamp, H.J. & G.H. de Bruijn. 1996. *Manihot esculenta* Crantz. Pp. 107-113 in *Plant Resources of South-east Asia No. 9. Plants yielding non-seed carbohydrates*. Edited by M. Flach & F. Rumawas. Backhuys, Leiden.

