

**A Casemix Analysis of
Hospital Admissions in
in Six Specialties
for Barking & Havering HA**

**Prepared by
Linda Jenkins, Adam Cook
and Paul Plant**

JANUARY 1999

BARKING & HAVERING REPORT- A CASEMIX ANALYSIS OF HOSPITAL ADMISSIONS IN SIX SPECIALTIES
--

CONTENTS

AIM	1
BACKGROUND	1
METHODS	1
Specialties	1
Data	2
Comparator areas	2
Measures	3
RESULTS	3
Data quality - clinical coding	3
Trusts where BHHA residents are admitted	3
Specialty admission rates	4
Comparison of specialty rates	4
Differences in HRG admission rates	4
Bed days saved - consequences of different rates	6
Further analysis of selected HRGs	8
SUMMARY OF KEY RESULTS	9
TABLES	
Table 1	Number of episodes by specialty and % ungrouped to HRGs
Table 2	Detail of ungroupable episodes by specialty
Table 3	Operative procedures in HRG U07 - Poorly coded primary diagnosis
Table 4	Number of episodes for Barking & Havering residents by provider
Table 5	Episodes by provider and specialty
Table 6	Age-standardised rates by specialty (showing age-bands)
Table 7	Comparison of admission rates with Bexley & Greenwich residents
Table 8	Elective inpatient rates by specialty and HRG
Table 9	Number of elective bed days saved by specialty and HRG
Table 10	Day case rates by specialty and HRG
Table 11	Number of day case places saved by specialty and HRG
Table 12	Summary information on elective episodes (savings by specialty)
Table 13	List of HRGs for further analysis
Table 14	15 HRGs by specialty and operative procedure
Table 15	Age breakdown for HRG L39, H10, H13
Table 16	Trust breakdown for HRG L39
Table 17	Operative procedure codes in HRG C14 for B&G and South London
Table 18	Selected HRGs - savings for elective inpatients and daycases
APPENDIX	Version 3 HRG labels and descriptions

<p style="text-align: center;">BARKING & HAVERING REPORT- A CASEMIX ANALYSIS OF HOSPITAL ADMISSIONS IN SIX SPECIALTIES January 1999</p>

AIM

To examine admission rates for Barking & Havering residents to six surgical specialties by first looking at elective, emergency and total workloads, then at the casemix of elective work using Healthcare Resource Groups. To compare findings to other London areas.

BACKGROUND

In a previous study for Barking & Havering Health Authority (BHHA), the South East Institute of Public Health (SEIPH) examined casemix in three specialties, namely general medicine, geriatrics and gynaecology. This led BHHA to carry out further work on the management of respiratory and cardiovascular diseases.

The study reported here was requested by the Director of Public Health to support demand management activities and negotiations with local trusts. In particular to help define clinically urgent cases for prioritisation.

The data needed for this work are the Hospital Episode Statistics (HES). These data were readily available to SEIPH as it is acting as the 'Safe Haven' for North Thames and South Thames HES data.

METHODS

Specialties

All finished consultant episodes in the following specialties were selected for the analysis:

- general surgery
- urology
- orthopaedics
- ENT
- ophthalmology
- dental surgery.

Although the main focus was elective work at sub-specialty level, elective and emergency episodes were looked at first. The sub-specialty work used version 3.0 HRGs (an advancement on the previous work for BHHA which used version 2.0). A full list of the HRG titles is given in the Appendix, which includes a description of the grouping logic taken from documentation from the National Casemix Office.

Data

Completed consultant episodes were the currency for this work, using the latest available HES data. This was the 'provisional' HES database for the financial year 1996/7, since in the Barking & Havering area the quality and completeness of data from providers were thought to be sufficiently good that the final dataset would be no different. However, it should be noted that 1996/7 data has since been cleaned further by the Department of Health, and therefore results from the 'final' dataset could differ from those reported here.

For data quality assurance, the figures for the six specialties were checked against other published sources and with information staff at BHHA and the main comparator HA. We also had access to the Department of Health's Statistics Division data quality reports for the hospital episode statistics. The data quality report for 1996/7 checked some variables at trust level (the overall number of episodes and the proportion of completed and valid diagnosis and procedure codes) and other variables at a wider geographical area.

The crucial data for this study were that all episodes got on the database as these would affect rates, and that medical coding was complete for the case mix analysis. In this study we looked for data quality levels of the following:- episodes at local hospitals were within 10% of the KP70 central statistical return, a valid primary diagnosis was present in at least 90% occasions and that when a procedure was recorded it was valid in at least 90% episodes.

The above checks suggested there were no major concerns about the data for Barking & Havering residents in this study.

Comparator areas

A single health authority and a larger area were chosen for comparing rates of admission. Because London admission rates are quite high, London rather than other urban or provincial HAs around England were considered. Considerations of data quality also influenced the choice of comparison areas.

At the time the analysis was carried out, the data quality for North Thames providers was quite patchy, with major inadequacies for some providers and overall completeness of around 80%. When calculating the admission rates for the residents of a health authority it would be difficult to eliminate the impact of providers with poor data. As a result the south London area made up of six health authorities was chosen as a comparator, since its data quality was good (90% complete). This area differed slightly from the north London authorities in its spread of underprivileged (Jarman) scores, with rather more authorities at the privileged end of the scale and fewer in the middle of the scale.

Bexley & Greenwich HA was chosen as the most suitable health authority comparator because of its socio-economic similarities with BHHA as shown by the Census. In the ONS classification they both belong to the same family group - 'Urban areas with mixed economies'. Both authorities are in outer London and contain a mixture of deprived and suburban areas.

Measures

Age-standardised admission rates were calculated based on the mid-year population estimates supplied by ONS. Admission rates were directly standardised to the population of England & Wales (mid 1996). In other words the local admission rate for each age-band was applied to the standard population, using the same method as in previous work for Barking & Havering.

It should be noted the admission rates presented are based on all finished consultant episodes. Clinical coding is done at the level of episode, which allows each episode to be assigned to a HRG and play a part in the analysis. In the text the term admission rate is used, although strictly it is the episode rate.

Measures used at the level of casemix group were average length of stay and the proportion of day cases. Some procedure specific rates were calculated, and BHHA supplied information on the length of inpatient waiting lists.

RESULTS

Data quality - clinical coding

The quality of detailed clinical data on the hospital episode database is crucial to this study as diagnosis and procedure codes are used to assign a patient to a casemix group. The percentage of episodes that could not be assigned to a HRG is an indicator of the quality of clinical coding. In the six specialties we found the numbers of ungrouped episodes overall was quite small, but it varied greatly for different types of episode (table 1). Around 98% of day cases were assigned to HRGs, and elective inpatients were also assigned with little loss of data (between 95% and 98%). The poorest clinical coding was in the non-elective work where it was only possible to assign around 80-90% of episodes to a HRG. A poorly defined principle diagnosis was almost always the reason episodes were not grouped to a HRG, ie a problem that the HRG classification system does not consider appropriate for hospital admission. Further examination showed that the diagnosis code 'Unknown and unspecified cause of morbidity' (R69X) was usually the cause for ungroupable episodes. The distribution of all types of ungroupable episodes is given in table 2, and a further table (table 3) shows those with code R69X indicating where the episode would have been grouped based on procedure alone. These investigations of episodes lost to the HRG analysis did not show any particular biases which would affect the results.

For this study the main focus was elective work, and fortunately this is where the clinical coding performed best in terms of assigning HRGs.

Although for Barking & Havering residents the number of usable episodes was high, it may not be true for comparison areas. Where the number of ungrouped cases is large and could affect the comparisons of admission rates, this is commented on in the report.

Trusts where BHHA residents are admitted

To put the study in context we looked at where BHHA residents were being treated (table 4). For

the six specialties covered, the main provider is Havering Hospitals NHS Trust, with 74% (over 20,000) finished consultant episodes per annum. Redbridge Health Care provides 13% (nearly 4000) episodes, with other trusts taking up the remaining 13% of workload for BHHA residents (table 5). From other statistical returns from these providers we know that BHHA residents make up 80% of Havering's and 35-40% of Redbridge's workload in these specialties.

Specialty admission rates

The age-specific rates for BHHA (in detail in table 6) show the contribution of each age-band to the overall age-standardised rate. For example, among elective inpatients the large proportion of ENT work on children and the relatively high proportion of ophthalmology carried out in the over 75 year olds. It also shows the heavy loads of non-elective work in general surgery and orthopaedics.

Comparison of specialty rates

Rates for BHHA were compared to Bexley & Greenwich HA (table 7). Not surprisingly, differences in non-elective rates were small and occurred in both directions. More dramatically, daycase admission rates for BHHA residents were twice as high in urology and ophthalmology and around 60% higher in ENT. Differences in elective inpatient admission rates compensated the daycase results with lower rates in ophthalmology, but elsewhere reinforced the pattern of higher rates in ENT (70% higher) and also in orthopaedics (60% higher than Bexley & Greenwich).

Differences in HRG admission rates

We looked at differences in more detail at sub-specialty level using Healthcare Related Groups. Admission rates were calculated for casemix groups and compared to both Bexley & Greenwich and London South. Commentary focusses on HRGs for Barking & Havering residents with high rates and big variations. A difference of 50% from the comparator regions was chosen arbitrarily as the threshold for the commentary, ie it was expected that differences of this magnitude would be of potential interest.

General surgery (100) - much of the workload in this specialty fell in HRGs relating to the digestive system, and also the skin. This specialty suffered from poor coding of the primary diagnosis to a greater extent than its comparators.

It was hard to establish a strong pattern as both higher and lower rates were seen for BHHA residents. The results were broadly similar for both elective inpatients and day cases. For example, there were many high rates compared to London South, but often not high compared to Bexley & Greenwich (in the list of HRGs below these are indicated by *). In contrast, some HRGs for BHHA had low rates, eg Q12, F36, F92, etc, or were absent, eg G15.

Examples of HRGs with high admission rates are:

Q11* (inpatients only)

F63 (day cases only)

J37*

J04
U07
F94 (day cases only)
J05* (inpatients only)
F95*
L39*
L43*
Q10

Urology (101) - This specialty was marked for its high rates among day cases. The day case rate for L21 was very high, and others were twice as high as the comparators, eg L30, L13, L39, L38. Similarly there were high rates among elective inpatients such as L17, L29, L43, L13, L18

A few HRG rates in urology were low or absent (L41, L98).

Orthopaedics (110) - This specialty was dominated by all elective inpatient rates being high. This pattern was not seen among the day cases where some rates were low. There was also a high rate of poor coding of primary diagnosis (U07).

Elective inpatient rates, which were high compared to both Bexley & Greenwich and London South, were:

H10
H17
H13 (but low for day cases)
H12
H19
U07
H22
H21
A07 (also for day cases)
H20 (but low for day cases)

ENT(120) - Compared to other specialties, this one was characterised by a small number of high volume HRGs. The main HRGs had high elective inpatient rates, although not always high compared to Bexley & Greenwich. For day cases, sometimes the rate was also high, eg C01, C02, and sometimes the reverse was seen with low rates, eg C24 and C22.

For elective inpatients high rates were found for:

C24
C22
C31
C32
C01
C02

Ophthalmology (130) - In this specialty some BHHA rates were quite different from Bexley & Greenwich, but more similar to London South. This was probably due to more costly practice

in Bexley & Greenwich treating these as elective inpatients rather than day cases.

Compared to London South, BHHA had higher day case rates for B05, B04 and B08.

BHHA did fewer B03 both as inpatients and day cases. The only other feature of the inpatient work was a rate of S22 that was high compared to London South and low compared to Bexley & Greenwich.

Oral surgery (140) - The dominant HRG was C14, where for BHHA residents far more were done as inpatients rather than day cases compared to London South (although figures for Bexley & Greenwich were more similar to BHHA).

Apart from this key result, BHHA also had higher elective inpatient rates for C35 and C24, and very low day case rates for C04.

Bed days saved - consequences of different rates

We next looked at the impact of BHHA practice, by comparing their bed use to what would have happened if they had same (local) length of stay, but the London South rates of admission. In calculating the number of bed days that could have been saved, the results highlight not only HRGs with different rates, but also ones with long lengths of stay. The detailed data is in tables 8-11, with summary information in table 12.

It should be noted that this is purely an arithmetic exercise that will need careful interpretation. There is nothing inherently right in a high or low rate of admission and there may be good reasons for differences in practice. The object is to raise questions relating to resource use. With this in mind, the major focus is on the possibility of reducing high numbers of inpatient days. For day cases we would be concerned at comparatively low rates.

General surgery - The problem of primary diagnosis codes being ungroupable re-emerged, as this group had the greatest potential for saving bed days, ie by reducing their volume. Not a helpful result. Beyond this, results showed some HRGs which were costly for BHHA compared to London South.

The HRGs below had greater resource (differences of over 91 days) for elective inpatients, ie with the London South rates a bed would have become free for over 3 months:

- U07 Poorly coded primary diagnosis
- Q02 Elective abdominal vascular surgery
- J04 Intermediate breast surgery >49 or with complications/comorbidities
- J37 Minor skin procedures - category 1 without complications/comorbidities
- G14 Biliary tract - major procedures >69 or with complications/comorbidities
- Q11 Varicose vein procedures
- F73 Inguinal umbilical or femoral hernia repairs >69 or with complications/comorbidities
- F34 Large intestine - major procedures without complications/comorbidities
- F31 Large intestine - complex procedures
- F11 Stomach or duodenum - complex procedures

The HRGs below had low rates and used fewer than 91 bed days for elective inpatients:

- F32 Large intestine - very major procedures
- F36 Large intestinal disorders >69 or with complications/comorbidities
- F22 Small intestine - major procedures >49 or with complications/comorbidities
- Q12 Therapeutic endovascular procedures
- Q05 Extracranial or upper limb arterial surgery
- F47 General abdominal disorders <70 without complications/comorbidities
- G15 Therapeutic pancreatic or biliary procedures
- S25 Other admissions

Results were good for day cases where greater use was made of day places for J37, F95, F63, L39. However, F35 occurred less often as a day case compared to London South.

Urology - as found before, this specialty was one where rates were high and substantial savings would have been made had the London South admission rate applied. For example, BHHA used nearly 600 more day case places for L21, and a judgement is needed on whether this is a good use of day case surgery.

Among the inpatient HRGs, a bed would have been freed for ten months had the admission rate been lower for L17 inpatients. Additional savings could have been realised for elective inpatients in L26, L27, L29, L04, L02.

In addition to L21, high levels of day case activity were seen for L30, L39, L45.

Orthopaedics - Large savings could have been achieved for elective inpatients with the London South admission rate. Little was lost or gained from the day case work.

The following HRGs used over 91 bed days more: H10, H17, H13, U07, H19, H12, H04, H21. In a counter example, at least 91 bed days were 'saved' by a low rate of admission to H02.

ENT - Again the potential savings in this specialty were for inpatients, chiefly C24 (nearly three bed years) and C22 (eleven months).

On the plus side inpatient bed days were 'saved' by HRG C54 and greater use was made of day case surgery (124 places) for C01.

Ophthalmology - Gains and losses seemed to be fairly even in this specialty and there were no notable results for inpatients. For day cases there were more B05 cases than had the London South rate applied, but B03 was under-used.

Oral surgery - The key result here was for C14, which used more inpatient bed days and made less use of day case surgery than found in the comparator areas. There was also under-use of day case surgery for C04.

Summary of bed days/ day case places 'saved' - in each of the six specialties, although the difference was quite small for ophthalmology, there was greater use of elective inpatient beds compared to admissions for London South. For general surgery, urology and, to a lesser extent,

ophthalmology there was also greater use of day case surgery. Less use was made of day case surgery in oral surgery. Table 12 summarises the overall specialty savings results.

Further analysis of selected HRGs

A small number of HRGs (table 13) were chosen for further analysis, either because of the impact of their different rates or to examine a particular procedure. The HRGs and all the procedures they contained are listed in table 14, and the procedures which dominate are summarised below.

General surgery -

- J37 92% removal of skin lesion
- Q11 100% varicose vein ligation and stripping
- F95 76% haemorrhoids
- L39 90% circumcision

Urology -

- L39 45% circumcision, 44% other operation on penis
- L21 87% diagnostic cystoscopy
- L30 53% rectal needle biopsy prostate, 46% dilation outlet female bladder

Orthopaedics -

- H10 various endoscopies of knee
- H17 many procedures, eg excision of bone
- H13 62% carpal tunnel release

ENT -

- C24 36% dissection tonsillectomy, 34% other bilateral tonsillectomy, 10% anedoidectomy
- C22 88% nasal septum and nasal polypectomy
- C01 68% insertion or removal of grommets

Ophthalmology -

- B05 47% cautery lesion of retina, and various other eye procedures

Oral surgery -

- C14 53% removal of wisdom tooth, 32% removal of other/multiple teeth

Pursuing these selected HRGs further we noted different patterns within HRGs. For example, in HRG L39 which is part of the workload of both general surgeons and urologists, the urologists treated the majority of older patients and admitted these as day cases, whereas the younger patients were shared with the general surgeons and the specialties were similar in the proportion treated as day cases (table 15). Most of these episodes took place in Havering Hospital or Redbridge Healthcare. The proportion treated as day cases varied with 88% of general surgery episodes and 91% of urology episodes in Havering Hospital compared to 68% and 87% respectively among the smaller caseload in Redbridge Healthcare (table 16).

In both orthopaedic HRGs H10 and H13 patients the age of patients was associated with the

setting for treatment with those aged over 65 more likely to have inpatient treatment (table 15).

Finally the procedures done by oral surgeons in C14 - Mouth and throat procedures category 2, were examined in relation to the work done in comparator districts (table 17). The proportions of wisdom tooth extractions (62% in Bexley & Greenwich and 50% in South London) and other/multiple extractions (25% and 39%) were similar to Barking & Havering's 53% wisdom teeth and 32% other extractions.

A summary table brings together the inpatient and day case figures for selected HRGs (table 18). It highlights the high volumes of:

- i) minor skin procedures (J37), bladder (L21) and prostate (L30) endoscopies done as day cases,
- ii) arthroscopies (H10), soft tissue/ bone (H17) and hand (H13) procedures done as inpatients,
- iii) tonsillectomies/ adenoidectomies (C24) and nose procedures (C22) done as inpatients,
- iv) mouth and throat procedures including tooth extractions (C14).

SUMMARY OF KEY RESULTS

Age-standardised admission rates have been calculated for Barking & Havering residents who had hospital episodes in six surgical specialties on the HES database in the year 1996/7. The work focussed particularly on elective work, for example the day case and inpatient split, and looked at the case mix using HRGs.

Data quality was examined and, as far as could be ascertained, was considered adequate for this purpose. For example 98% of elective episodes had sufficiently good medical coding to be allocated to a HRG. Comparator areas for Barking & Havering were chosen with data quality in mind.

Specialty admission rates for BHHA non-elective work are similar to the comparator areas in south London. As might have been expected among non-elective admissions differences were small and occurred in both directions. However large differences occurred in elective admissions.

Biggest differences in specialty rates were for urology and ophthalmology day case work. Elective inpatient specialty rates show some higher rates (such as ENT and orthopaedics) and a lower rate in ophthalmology which compensated for the high day case rate in this specialty. BHHA rates are slightly lower than Bexley & Greenwich in general surgery for both day cases and elective inpatients.

The table below summarises information from tables at the end of this report. It shows the five HRGs in each specialty with the overall highest elective (day case + inpatient) rates. Alongside these the five HRGs are shown with the greatest potential savings in inpatient days and day cases had the South London admission rate applied:

Specialty	HRG	Elective admission rate	HRG	Potential inpatient day savings	HRG	Potential day case savings
General surgery	J37	361	U07	425	J37	428
	Q11	119	Q02	186	F95	201
	F35	109	J04	175	F63	171
	F74	103	J37	151	L39	114
	F95	91	G14	147	F94	74
Urology	L21	462	L17	317	L21	584
	L30	82	L26	193	L30	279
	L39	69	L27	166	L39	186
	L27	67	L29	142	L45	112
	L19	60	L04	141	L20	69
Trauma & orthopaedics	H10	236	H10	510	A07	36
	H13	66	H17	226	H10	29
	H17	51	H13	194	H22	14
	H02	50	U07	169	U02	10
	H04	42	H19	166	H12	9
ENT	C24	380	C24	1018	C01	124
	C22	114	C22	336	C02	91
	C01	113	C32	65	U02	6
	C02	52	C31	62	J37	5
	C31	35	C01	31	U07	4
Ophthalmology	B02	236	B02	66	B05	226
	B05	8	B09	27	B04	79
	B03	7	B08	24	B07	23
	B07	6	S22	16	B06	13
	B01	5	B01	12	B08	13
Oral surgery	C14	236	C14	144	C44	4
	C04	8	C35	42	C07	3
	C24	7	C24	36	S25	3
	C35	6	C45	33	C17	2
	S22	5	H10	16	C34	1

While these calculations are over-simplifications of what could be achieved, they are presented as an indication of the variation in practice and a basis for further discussion.

List of tables

Table 1	Number of episodes by specialty and % ungrouped to HRGs
Table 2	Detail of ungroupable episodes by specialty
Table 3	Operative procedures in HRG U07 - Poorly coded primary diagnosis
Table 4	Number of episodes for Barking & Havering residents by provider
Table 5	Episodes by provider and specialty
Table 6	Age-standardised rates by specialty (showing age-bands)
Table 7	Comparison of admission rates with Bexley & Greenwich residents
Table 8	Elective inpatient rates by specialty and HRG
Table 9	Number of elective bed days saved by specialty and HRG
Table 10	Day case rates by specialty and HRG
Table 11	Number of day case places saved by specialty and HRG
Table 12	Summary information on elective episodes (savings by specialty)
Table 13	List of HRGs for further analysis
Table 14	15 HRGs by specialty and operative procedure
Table 15	Age breakdown for HRG L39, H10, H13
Table 16	Trust breakdown for HRG L39
Table 17	Operative procedure codes in HRG C14 for Bexley & Greenwich and South London
Table 18	Selected HRGs - savings for elective inpatients and daycases
Appendix	Version 3 HRG labels and descriptions

Table 1 Number of episodes by specialty and percentage ungrouped to HRGs

		Elective inpatients		Day cases		Non-elective		Total	
		fces	% ungrouped	fces	% ungrouped	fces	% ungrouped	fces	% ungrouped
100	General surgery	2912	4.2	3962	1.4	3391	18.0	10265	7.7
101	Urology	1538	2.5	3322	1.9	901	15.3	5761	4.1
110	Orthopaedics	2165	5.0	901	2.7	2244	8.6	5310	6.2
120	ENT	2214	1.6	838	2.4	450	20.4	3502	4.2
130	Ophthalmology	659	3.9	1699	1.5	196	11.2	2554	2.9
140	Oral surgery	501	1.6	642	1.4	99	11.1	1242	2.3

This was using 'Tretspaf' which was actually Mainspaf in N Thames, but produced 59 net fewer episodes

Should be OK

Table 2: Detail of ungroupable episodes by specialty

Specialty	HRC U Code	Elective	Non-Elective	Daycases
100	U02	4	2	
100	U04		7	3
100	U07	117	599	53
100	U08	1	1	1
101	U02	5		28
101	U04	1		
101	U07	33	138	34
110	U02	12	1	18
110	U04	2	2	
110	U07	95	191	6
120	U02	13	1	12
120	U04		4	
120	U07	22	87	8
130	U02	6	7	6
130	U07	20	15	20
140	U07	8	10	9
140	U08		1	

Table 3: Operative Procedures for HRG U07

Operative Procedure		100	101	110	120
A521	Therapeutic lumbar epidural			14	
A522	Therapeutic sacral epidural			10	
A551	Radiculography			1	
A763	Chem destr lumbar sympathet n	1			
A848	Neurophysiological op OS				9
G451	Diag fib endoscop biop up GIT	1			
G478	Intubation of stomach OS	1			
H221	Fib endosc & biop lesion colon	1			
H229	Diagn endoscopy of colon NOS	1			
H231	Fib sig snare lesion low bowel	1			
H232	Fib sigm caut lesion low bowel	1			
H259	Diag fibreop sigmoidoscopy NOS	1			
H269	Rig sigmoidos extir lesion NOS	1			
H281	Diag rigid sigmoidosc & biopsy	2			
H289	Diagn rigid sigmoidoscopy NOS	5			
H444	Exam rectum under anaesthetic	1			
H511	Haemorrhoidectomy	10			
H523	Inj sclerosing subst haemorrh	2			
H562	Lateral sphincterotomy of anus	1			
L861	Inj sclerose subst varicose v	12			
L942	PC TL cannulation of vein	2			
M478	Ureth catheterisation blad OS		3		
M479	Ureth catheterisation blad NOS	1			
M582	Dilation outlet female bladder		1		
M703	Rectal needle biopsy prostate		3		
S551	Debridement of burnt skin NEC	1			
T122	Drainage of pleural cavity NEC	1			
V508	Manipulation of spine OS			1	
V509	Manipulation of spine NOS			2	
V523	Discography intervert disc			1	
W903	Inject therap subst in joint			7	
W904	Injection into joint NEC			5	
W918	Oth manipulation of joint OS			4	
W919	Oth manipulation of joint NOS			1	
X313	IV inj radiocontr material NEC	1			
X339	Other blood transfusion NOS		1	2	
X382	Inj steroid for local act NEC			1	
X481	Application of plaster cast			1	
X482	Change of plaster cast			1	
X558	Other op unspec organ OS				1
X598	Anaesthetic without surgery OS		1		
Total		48	9	51	10

Table 4: Barking & Havering Residents - Numbers by Provider

Provider	Daycase	Inpatient	Non-Elective	Total
RG7 - Havering Hospitals NHST	8533	7353	5198	21084
RG4 - Redbridge Health Care NHST	1407	1156	1162	3725
RDF - Forest Healthcare NHST	244	473	194	911
RNJ - The Royal Hospitals NHST	389	282	215	886
RP6 - Moorfields Eye Hospital NHST	467	241	55	763
RNH - Newham Healthcare NHST	100	35	159	294
RP4 - The Great Ormond Street Hospital For Sick Children	67	113	2	182
RAL - The Royal Free Hampstead Hospital NHST	41	121	17	179
RRV - University College London Hospitals NHST	37	75	30	142
RJ1 - Guy's & St Thomas' NHST	17	29	25	71
RAJ - Southend Health Care NHST	14	7	23	44
RQW - The Princess Alexandra Hospital NHST	5	12	21	38
RFZ - Northwick Park & St Marks NHST	6	25	3	34
RQ8 - Mid Essex Hospitals NHST	1		23	24
RJ5 - St Mary's Hospital NHST	4	14	3	21
RDE - Essex Rivers Healthcare NHST	2	3	13	18
RQM - Chelsea & Westminster Healthcare NHST	1	11	4	16
RQX - The Homerton Hospital NHST	4	4	8	16
RGT - Addenbrooke's NHST	1	9	4	14
RKE - Whittington Hospital NHST	1	4	9	14
All Others	23	22	113	158
Total	11364	9989	7281	28634

Table 5: Barking & Havering Residents - Numbers by Provider

Provider	Speciality	Daycase	Inpatient	Non-Elective	Total
RG7 - Havering Hospitals NHST	100	3273	2157	2504	7934
	101	2581	1061	730	4372
	110	551	1735	1540	3826
	120	729	1985	364	3078
	130	1018	17	1	1036
RG4 - Redbridge Health Care NHST	140	381	398	59	838
	100	565	575	640	1780
	101	550	318	83	951
	110	280	263	439	982
	130	12			12
RDF - Forest Healthcare NHST	100	4	8	11	23
	101	10	9		19
	110	6	6	15	27
	120	29	49	38	116
	130	172	364	118	654
	140	23	37	12	72
RNJ - The Royal Hospitals NHST	100	20	71	67	158
	101	88	47	52	187
	110	12	54	44	110
	120	18	33	25	76
	130	17	18	6	41
	140	234	59	21	314
RP6 - Moorfields Eye Hospital NHST	130	467	241	55	763
RNH - Newham Healthcare NHST	100	73	12	60	145
	101	15	14	7	36
	110	11	9	92	112
	120	1			1
RP4 - The Great Ormond Street Hospital For Sick Children	101	28	32		60
	110	20	45		65
	120	13	24	2	39
	130	6	12		18
RAL - The Royal Free Hampstead Hospital NHST	100	1	7	3	11
	101		2	2	4
	110		3		3
	120	40	109	11	160
	130			1	1

Table 5: Barking & Havering Residents - Numbers by Provider (continued)

Provider	Specialty	Daycase	Inpatient	Non-Effective	Total
RRV - University College London Hospitals NHST	100	8	13	14	35
	101	26	46	6	78
	110	2	9	7	18
	120		3		3
	130			1	1
	140	1	4	2	7
RJ1 - Guy's & St Thomas' NHST	100	1	7	7	15
	101	12	6	4	22
	110	1	8	10	19
	120		3	1	4
	130	2	4	3	9
	140	1	1		2
RAJ - Southend Health Care NHST	100	1		6	7
	110	2	2	7	11
	120	8	2	1	11
	130	3	3	9	15
RQW - The Princess Alexandra Hospital NHST	100	1	6	11	18
	110	3	3	8	14
	120		1	1	2
	140	1	2	1	4
RFZ - Northwick Park & St Marks NHST	100	5	25	2	32
	110	1		1	2
RQ8 - Mid Essex Hospitals NHST	100			9	9
	101	1		2	3
	110			7	7
	120			2	2
	140			3	3
RJ5 - St Mary's Hospital NHST	100	1	11	2	14
	101	2			2
	110		2	1	3
	120		1		1
	130	1			1
RDE - Essex Rivers Healthcare NHST	100		3	4	7
	101	2		2	4
	110			6	6
	120			1	1
RQM - Chelsea & Westminster Healthcare NHST	100	1	2	4	7
	101		2		2
	110		5		5
	120		2		2
RQX - The Homerton Hospital NHST	100	1		3	4
	110	3	4	5	12
RGT - Addenbrooke's NHST	100		5	1	6
	110		4	3	7
	130	1			1
RKE - Whittington Hospital NHST	100		1	2	3
	101	1		2	3
	110		2	5	7
	120		1		1
All Others	100	7	9	41	57
	101	6	1	11	18
	110	9	11	54	74
	120		1	4	5
	130			2	2
	140	1		1	2

TABLE 6

Barking & Havering Residents Age Standardised Rate by Specialty
ELECTIVE INPATIENTS

Specialty	Age Band	Barking & Havering		Proportion of England & Wales		Standardised Rate	
		Population	Frequency	Population	Rate per 100,000	Rate per 100,000	
100 General Surgery	00-04	25433	36	0.06	141.55	9.05	
	05-14	50333	69	0.13	137.09	17.62	
	15-44	159605	650	0.42	407.26	171.48	
	45-64	85582	951	0.23	1111.21	253.05	
	65-74	36389	687	0.09	1887.93	162.98	
	75-84	21070	436	0.05	2069.29	111.38	
	85+	6212	81	0.02	1303.93	24.31	
	Total	384624	2910		756.58	749.86	
101 Urology	00-04	25433	49	0.06	192.66	12.32	
	05-14	50333	54	0.13	107.29	13.79	
	15-44	159605	138	0.42	86.46	36.41	
	45-64	85582	323	0.23	377.42	85.95	
	65-74	36389	542	0.09	1489.46	128.58	
	75-84	21070	360	0.05	1708.59	91.97	
	85+	6212	70	0.02	1126.85	21.01	
	Total	384624	1536		399.35	390.01	
110 Trauma & Orthopaedics	00-04	25433	22	0.06	86.50	5.53	
	05-14	50333	126	0.13	250.33	32.17	
	15-44	159605	640	0.42	400.99	168.84	
	45-64	85582	650	0.23	759.51	172.96	
	65-74	36389	419	0.09	1151.45	99.40	
	75-84	21070	263	0.05	1248.22	67.19	
	85+	6212	24	0.02	386.35	7.20	
	Total	384624	2144		557.43	553.29	
120 ENT	00-04	25433	350	0.06	1376.16	87.97	
	05-14	50333	666	0.13	1323.19	170.03	
	15-44	159605	671	0.42	420.41	177.02	
	45-64	85582	318	0.23	371.57	84.62	
	65-74	36389	141	0.09	387.48	33.45	
	75-84	21070	54	0.05	256.29	13.80	
	85+	6212	9	0.02	144.88	2.70	
	Total	384624	2209		574.33	569.58	
130 Ophthalmology	00-04	25433	26	0.06	102.23	6.53	
	05-14	50333	29	0.13	57.62	7.40	
	15-44	159605	50	0.42	31.33	13.19	
	45-64	85582	101	0.23	118.02	26.88	
	65-74	36389	151	0.09	414.96	35.82	
	75-84	21070	209	0.05	991.93	53.39	
	85+	6212	79	0.02	1271.73	23.71	
	Total	384624	645		167.70	166.92	
140 Oral Surgery	00-04	25433	1	0.06	3.93	0.25	
	05-14	50333	15	0.13	29.80	3.83	
	15-44	159605	355	0.42	222.42	93.65	
	45-64	85582	84	0.23	98.15	22.35	
	65-74	36389	27	0.09	74.20	6.41	
	75-84	21070	19	0.05	90.18	4.85	
	85+	6212	0	0.02	0.00	0.00	
	Total	384624	501		130.26	131.35	

DAYCASES

Speciality	Age Band	Barking & Havering Population	Frequency	Proportion of England & Wales Population	Crude Rate per 100000	Standardised Rate per 100000
100 General Surgery	00-04	25433	151	0.06	593.72	37.95
	05-14	50333	204	0.13	405.30	52.08
	15-44	159605	1456	0.42	912.25	384.11
	45-64	85582	1167	0.23	1363.60	310.53
	65-74	36389	608	0.09	1670.83	144.24
	75-84	21070	313	0.05	1485.52	79.96
	85+	6212	55	0.02	885.38	16.50
	Total		384624	3954		1028.02
101 Urology	00-04	25433	70	0.06	275.23	17.59
	05-14	50333	83	0.13	164.90	21.19
	15-44	159605	419	0.42	262.52	110.54
	45-64	85582	876	0.23	1023.58	233.10
	65-74	36389	1033	0.09	2838.77	245.06
	75-84	21070	712	0.05	3379.21	181.89
	85+	6212	127	0.02	2044.43	38.11
	Total		384624	3320		863.18
110 Trauma & Orthopaedics	00-04	25433	8	0.06	31.46	2.01
	05-14	50333	35	0.13	69.54	8.94
	15-44	159605	492	0.42	308.26	129.80
	45-64	85582	301	0.23	351.71	80.09
	65-74	36389	45	0.09	123.66	10.68
	75-84	21070	14	0.05	66.45	3.58
	85+	6212	0	0.02	0.00	0.00
	Total		384624	895		232.69
120 ENT	00-04	25433	118	0.06	463.96	29.66
	05-14	50333	305	0.13	605.96	77.86
	15-44	159605	218	0.42	136.59	57.51
	45-64	85582	116	0.23	135.54	30.87
	65-74	36389	51	0.09	140.15	12.10
	75-84	21070	17	0.05	80.68	4.34
	85+	6212	2	0.02	32.20	0.60
	Total		384624	827		215.02
130 Ophthalmology	00-04	25433	65	0.06	255.57	16.34
	05-14	50333	50	0.13	99.34	12.76
	15-44	159605	97	0.42	60.78	25.59
	45-64	85582	285	0.23	333.01	75.84
	65-74	36389	444	0.09	1220.15	105.33
	75-84	21070	592	0.05	2809.68	151.24
	85+	6212	164	0.02	2640.05	49.21
	Total		384624	1697		441.21
140 Oral Surgery	00-04	25433	51	0.06	200.53	12.82
	05-14	50333	149	0.13	296.03	38.04
	15-44	159605	383	0.42	239.97	101.04
	45-64	85582	43	0.23	50.24	11.44
	65-74	36389	10	0.09	27.48	2.37
	75-84	21070	2	0.05	9.49	0.51
	85+	6212	1	0.02	16.10	0.30
	Total		384624	639		166.14

NON-ELECTIVE/EMERGENCIES

Specialty	Age Band	Barking & Havering Population	Frequency	Proportion In England & Wales Population	Crude Rate per 10000	Standardised Rate per 10000
100 General Surgery	00-04	25433	49	0.06	192.66	12.32
	05-14	50333	348	0.13	691.40	88.84
	15-44	159605	1132	0.42	709.25	298.64
	45-64	85582	628	0.23	733.80	167.11
	65-74	36389	524	0.09	1440.00	124.31
	75-84	21070	475	0.05	2254.39	121.35
	85+	6212	221	0.02	3557.63	66.32
	Total		384624	3377		878.00
101 Urology	00-04	25433	6	0.06	23.59	1.51
	05-14	50333	20	0.13	39.74	5.11
	15-44	159605	163	0.42	102.13	43.00
	45-64	85582	223	0.23	260.57	59.34
	65-74	36389	228	0.09	626.56	54.09
	75-84	21070	205	0.05	972.95	52.37
	85+	6212	56	0.02	901.48	16.80
	Total		384624	901		234.25
110 Trauma & Orthopaedics	00-04	25433	80	0.06	314.55	20.11
	05-14	50333	325	0.13	645.70	82.97
	15-44	159605	592	0.42	370.92	156.18
	45-64	85582	314	0.23	366.90	83.55
	65-74	36389	286	0.09	785.95	67.85
	75-84	21070	371	0.05	1760.80	94.78
	85+	6212	271	0.02	4362.52	81.32
	Total		384624	2239		582.13
120 ENT	00-04	25433	60	0.06	235.91	15.08
	05-14	50333	51	0.13	101.33	13.02
	15-44	159605	168	0.42	105.26	44.32
	45-64	85582	63	0.23	73.61	16.76
	65-74	36389	48	0.09	131.91	11.39
	75-84	21070	39	0.05	185.10	9.96
	85+	6212	13	0.02	209.27	3.90
	Total		384624	442		114.92
130 Ophthalmology	00-04	25433	5	0.06	19.66	1.26
	05-14	50333	7	0.13	13.91	1.79
	15-44	159605	35	0.42	21.93	9.23
	45-64	85582	50	0.23	58.42	13.30
	65-74	36389	35	0.09	96.18	8.30
	75-84	21070	49	0.05	232.56	12.52
	85+	6212	15	0.02	241.47	4.50
	Total		384624	196		50.96
140 Oral Surgery	00-04	25433	19	0.06	74.71	4.78
	05-14	50333	4	0.13	7.95	1.02
	15-44	159605	56	0.42	35.09	14.77
	45-64	85582	8	0.23	9.35	2.13
	65-74	36389	5	0.09	13.74	1.19
	75-84	21070	2	0.05	9.49	0.51
	85+	6212	2	0.02	32.20	0.60
	Total		384624	96		24.96

Table 7 Comparison of admission rates

		Elective inpatients		Day cases		Non-elective	
		BHHA	B&G	BHHA	B&G	BHHA	B&G
100	General surgery	750	863	1025	1091	879	914
101	Urology	390	457	847	459	232	193
110	Orthopaedics	553	354	235	235	587	689
120	ENT	570	334	213	134	114	135
130	Ophthalmology	167	265	436	195	51	43
140	Oral surgery	131	116	167	134	25	25

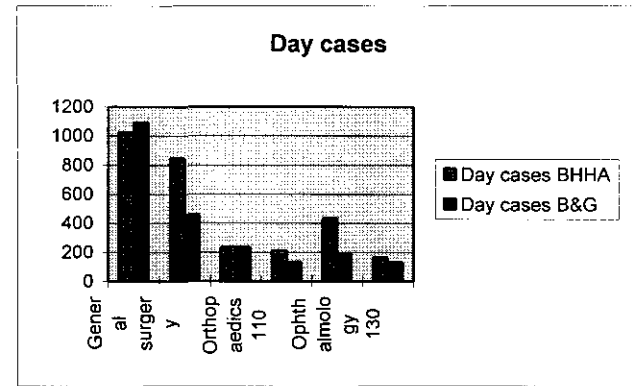
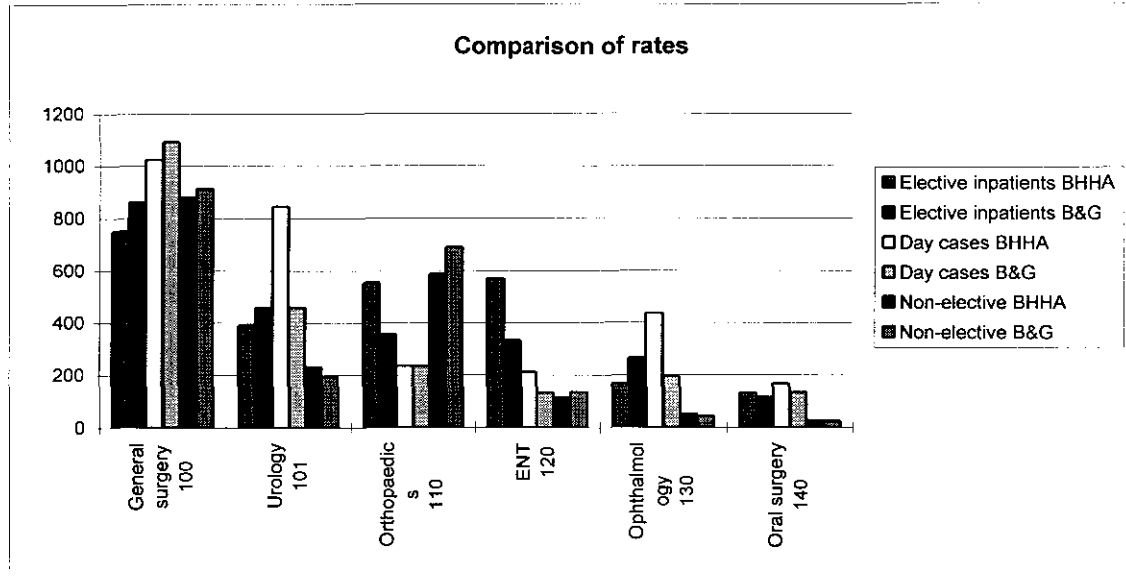
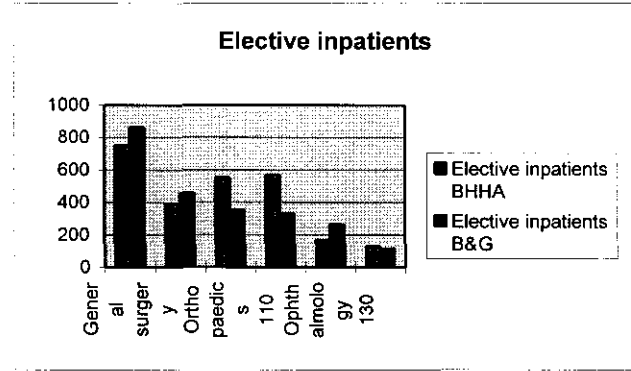


Table 8: Elective Inpatient FCE Rates per Hundred Thousand by Specialty and HRG - 1996/97

Specialty	HRG	Barking & Havering	Bexley & Greenwich	South London	Greater London	Barking/ S.London Ratio	Bexley/ S.London Ratio
100	Q11	63.70	68.46	36.23	29.58	1.76	1.89
100	F74	49.66	84.12	46.26	38.26	1.07	1.82
100	G14	45.76	40.05	35.45	29.93	1.29	1.13
100	F73	38.74	41.42	27.77	24.79	1.40	1.49
100	J37	36.40	28.99	14.18	13.56	2.57	2.04
100	J04	30.94	12.46	13.24	13.16	2.34	0.94
100	U07	30.42	3.69	7.52	20.63	4.05	0.49
100	J02	23.40	26.76	21.62	19.80	1.08	1.24
100	Q14	22.62	23.29	22.32	19.62	1.01	1.04
100	S22	21.32	24.11	21.60	15.39	0.99	1.12
100	F32	18.46	21.73	21.79	16.19	0.85	1.00
100	J05	17.94	16.88	9.68	10.13	1.85	1.74
100	F95	14.82	11.22	8.64	6.28	1.71	1.30
100	F93	14.56	18.31	16.09	12.37	0.90	1.14
100	K01	14.56	15.19	12.96	10.64	1.12	1.17
100	F35	14.04	21.67	13.69	7.95	1.03	1.58
100	F31	13.78	13.54	12.19	9.76	1.13	1.11
100	F34	11.96	9.16	8.98	7.22	1.33	1.02
100	L39	11.18	11.77	3.43	4.31	3.26	3.43
100	Q10	11.18	6.75	5.84	6.06	1.91	1.15
100	G13	10.92	13.51	9.48	7.59	1.15	1.42
100	Q12	10.14	9.59	19.25	14.99	0.53	0.50
100	F54	9.62	3.74	4.03	5.03	2.39	0.93
100	L43	9.36	10.78	4.16	3.87	2.25	2.59
100	Q02	9.36	7.02	5.98	5.11	1.56	1.17
100	J03	8.58	10.37	6.74	7.34	1.27	1.54
100	Q03	8.32	7.54	8.41	7.37	0.99	0.90
100	F72	7.28	14.20	8.73	7.03	0.83	1.63
100	F92	6.76	13.73	11.21	7.25	0.60	1.22
100	F36	6.24	17.04	13.05	7.56	0.48	1.31
100	F37	5.98	4.22	4.83	3.53	1.24	0.87
100	F75	5.20	1.34	0.37	1.42	14.24	3.67
100	J07	4.68	17.17	7.91	6.08	0.59	2.17
100	J36	4.42	3.51	1.35	1.17	3.27	2.60
100	J35	4.16	4.17	1.91	1.71	2.18	2.18
100	F53	4.16	2.52	1.79	1.73	2.32	1.40
100	F12	4.16	2.22	3.48	2.93	1.19	0.64
100	Q07	3.64	2.61	5.70	3.41	0.64	0.46
100	F71	3.38	6.48	3.91	2.72	0.86	1.66
100	J30	3.38	3.73	2.98	2.27	1.13	1.25
100	F44	3.38	3.42	3.09	2.36	1.09	1.11
100	F43	3.38	1.50	1.42	1.07	2.37	1.05
100	L42	3.38	1.00	1.04	1.06	3.24	0.95
100	F96	2.86	3.18	3.56	2.88	0.80	0.89
100	C44	2.86	0.72	0.57	0.82	5.01	1.26
100	F06	2.60	7.31	3.70	1.82	0.70	1.98
100	F13	2.60	4.21	2.53	2.17	1.03	1.66
100	Q15	2.60	3.78	2.83	1.91	0.92	1.34
100	F11	2.60	1.26	1.17	1.34	2.22	1.08
100	C14	2.60	0.70	0.30	0.65	8.77	2.38
100	C34	2.34	2.58	1.82	1.62	1.28	1.41
100	K02	2.34	0.95	1.70	1.81	1.38	0.56
100	H13	2.34	0.22	0.21	0.55	10.99	1.05
100	F46	2.08	6.74	4.56	2.24	0.46	1.48
100	G19	2.08	3.85	3.78	2.08	0.55	1.02

Table 8: Elective Inpatient FCE Rates per Hundred Thousand by Specialty and HRG - 1996/97

Specialty	HRG	Barking & Havering	Bexley & Greenwich	South London	Greater London	Barking/ S.London Ratio	Bexley/ S.London Ratio
100	F42	2.08	2.43	2.04	1.57	1.02	1.19
100	F33	2.08	1.76	2.56	1.57	0.81	0.69
100	Q13	1.82	4.78	3.37	2.12	0.54	1.42
100	F07	1.82	4.75	2.19	1.23	0.83	2.17
100	F41	1.82	2.46	1.92	1.24	0.95	1.28
100	F52	1.82	1.95	1.79	1.24	1.02	1.09
100	F23	1.82	1.82	1.31	1.25	1.39	1.39
100	J01	1.82	1.17	1.03	1.16	1.77	1.13
100	G05	1.82	0.75	0.53	0.61	3.40	1.41
100	F63	1.82	0.47	0.59	0.71	3.09	0.80
100	J11	1.56	6.14	4.10	2.75	0.38	1.50
100	G18	1.56	3.45	3.49	1.68	0.45	0.99
100	J06	1.56	3.28	1.83	1.25	0.85	1.79
100	F51	1.56	2.12	1.94	1.28	0.81	1.10
100	G12	1.56	1.95	1.39	1.35	1.12	1.40
100	G02	1.56	1.51	0.86	0.94	1.81	1.75
100	G04	1.56	1.50	0.58	0.53	2.71	2.60
100	F94	1.56	1.26	1.77	1.17	0.88	0.72
100	H17	1.56	0.25	0.34	0.47	4.65	0.74
100	F01	1.30	3.53	1.93	1.51	0.67	1.83
100	Q17	1.30	2.55	2.65	2.19	0.49	0.96
100	F55	1.30	1.75	0.82	0.48	1.59	2.14
100	Q08	1.30	1.73	1.36	1.11	0.95	1.27
100	Q09	1.30	0.95	0.70	0.65	1.86	1.36
100	F21	1.30	0.69	0.70	0.66	1.86	0.99
100	C01	1.30		0.04	0.21	31.41	0
100	G15	1.04	6.74	4.18	2.73	0.25	1.61
100	J33	1.04	2.17	1.35	0.77	0.77	1.61
100	L41	1.04	1.82	0.78	0.48	1.34	2.33
100	F18	1.04	0.92	0.86	0.61	1.21	1.07
100	U02	1.04	0.73	2.68	6.00	0.39	0.27
100	K03	1.04	0.26	0.55	0.36	1.88	0.46
100	J12	1.04	0.25	0.16	0.18	6.39	1.52
100	H11	1.04		0.11	0.29	9.77	0
100	S25	0.78	5.20	4.95	2.72	0.16	1.05
100	Q05	0.78	4.77	5.23	3.37	0.15	0.91
100	F22	0.78	3.93	3.45	2.40	0.23	1.14
100	F82	0.78	2.57	2.39	1.54	0.33	1.08
100	F17	0.78	2.47	1.75	1.05	0.44	1.41
100	J44	0.78	2.12	1.31	1.30	0.59	1.61
100	F91	0.78	1.69	3.19	2.58	0.24	0.53
100	F77	0.78	1.50	0.46	0.63	1.71	3.30
100	L38	0.78	1.41	0.42	0.27	1.87	3.37
100	G03	0.78	0.71	0.52	0.60	1.49	1.36
100	C02	0.78	0.48	0.11	0.15	6.87	4.27
100	G21	0.78	0.25	0.59	0.52	1.32	0.42
100	B05	0.78			0.07	0.00	0
100	L04	0.78			0.05	0.00	0
100	Q01	0.52	1.26	0.30	0.20	1.76	4.25
100	J31	0.52	0.94	0.30	0.24	1.72	3.11
100	S03	0.52	0.76	0.25	0.18	2.12	3.10
100	G24	0.52	0.75	1.28	0.53	0.41	0.59
100	F61	0.52	0.74	0.36	0.41	1.43	2.04
100	G22	0.52	0.50	0.41	0.27	1.28	1.24
100	S19	0.52	0.50	0.58	0.39	0.90	0.87

Table 8: Elective Inpatient FCE Rates per Hundred Thousand by Specialty and HRG - 1996/97

Specialty	HRG	Barking & Havering	Bexley & Greenwich	South London	Greater London	Barking/ S.London Ratio	Bexley/ S.London Ratio
100	K17	0.52	0.26	0.47	0.13	1.11	0.55
100	F76	0.52	0.25	0.62	0.47	0.84	0.40
100	L46	0.52			0.29	0.00	0
100	M18	0.52		0.04	0.08	13.50	0
100	P06	0.52			0.03	0.00	0
100	Q04	0.52		0.50	0.81	1.03	0
100	G17	0.26	3.98	2.39	1.52	0.11	1.67
100	F47	0.26	3.66	2.75	1.60	0.09	1.33
100	F15	0.26	3.50	0.78	0.36	0.33	4.49
100	F16	0.26	2.63	1.24	0.55	0.21	2.13
100	F08	0.26	1.98	0.90	0.58	0.29	2.19
100	Q18	0.26	1.70	1.66	1.57	0.16	1.02
100	M07	0.26	1.26	0.80	0.65	0.33	1.58
100	L02	0.26	1.25	0.51	0.32	0.51	2.48
100	C24	0.26	1.17	0.91	0.68	0.29	1.28
100	K09	0.26	0.97	0.36	0.20	0.72	2.69
100	F14	0.26	0.94	0.77	0.83	0.34	1.23
100	C43	0.26	0.76	0.34	0.45	0.77	2.27
100	S05	0.26	0.75	0.70	0.45	0.37	1.08
100	J10	0.26	0.74	0.36	0.47	0.72	2.03
100	J38	0.26	0.73	1.01	0.60	0.26	0.73
100	M03	0.26	0.69	0.66	0.36	0.39	1.05
100	L27	0.26	0.50	1.04	0.47	0.25	0.48
100	A22	0.26	0.49	0.30	0.22	0.88	1.66
100	H16	0.26	0.48	0.28	0.15	0.93	1.72
100	L21	0.26	0.48	0.70	0.34	0.37	0.68
100	F45	0.26	0.26	0.29	0.21	0.89	0.88
100	F56	0.26	0.26	0.32	0.19	0.81	0.80
100	D05	0.26	0.25	0.15	0.17	1.76	1.68
100	M02	0.26	0.25	0.28	0.15	0.92	0.87
100	S06	0.26	0.25	0.21	0.15	1.25	1.19
100	J08	0.26	0.22	0.11	0.26	2.44	2.10
100	K06	0.26	0.22	0.10	0.21	2.64	2.28
100	A15	0.26		0.08	0.09	3.40	0.00
100	A34	0.26			0.02	0.00	0
100	B08	0.26			0.02	0.00	0
100	C06	0.26			0.02	0.00	0
100	C31	0.26			0.02	0.00	0
100	C54	0.26		0.08	0.15	3.07	0.00
100	E18	0.26			0.07	0.00	0
100	G16	0.26		0.07	0.12	3.53	0.00
100	H12	0.26			0.03	0.00	0
100	H14	0.26			0.03	0.00	0
100	H19	0.26		0.03	0.05	7.93	0.00
100	J34	0.26		0.04	0.12	6.28	0.00
100	K10	0.26			0.01	0.00	0
100	L06	0.26			0.03	0.00	0
100	L11	0.26		0.04	0.03	5.96	0.00
100	L13	0.26		0.04	0.05	5.96	0.00
100	L14	0.26		0.24	0.15	1.11	0.00
100	L30	0.26			0.02	0.00	0
100	L51	0.26			0.02	0.00	0
100	M16	0.26		0.04	0.02	6.35	0.00
100	P05	0.26			0.01	0.00	0
100	P20	0.26			0.03	0.00	0

Table 8: Elective Inpatient FCE Rates per Hundred Thousand by Specialty and HRG - 1996/97

Specialty	HRG	Barking & Havering	Bexley & Greenwich	South London	Greater London	Barking/ S.London Ratio	Bexley/ S.London Ratio
100	Q06	0.26		0.33	0.31	0.79	0
100	S14	0.26		0.34	0.20	0.76	0
100	U08	0.26		0.21	0.19	1.27	0
100	F05		4.94	2.80	1.50	0	1.77
100	F04		3.19	0.92	0.35	0	3.48
100	F03		3.01	0.84	0.42	0	3.60
100	Q16		2.00	1.01	0.56	0	1.98
100	G23		1.46	1.14	0.54	0	1.28
100	J32		1.15	0.21	0.15	0	5.56
100	J29		1.01	0.55	0.28	0	1.84
100	F64		0.76	0.21	0.08	0	3.65
100	G20		0.75	0.46	0.25	0	1.64
100	J98		0.72	0.16	0.10	0	4.62
100	C21		0.69	0.11	0.06	0	6.15
100	A14		0.52	0.21	0.12	0	2.49
100	L32		0.51	0.17	0.05	0	2.99
100	L18		0.51	0.37	0.15	0	1.37
100	L19		0.51	0.74	0.35	0	0.68
100	D03		0.50	0.28	0.16	0	1.81
100	F62		0.50	0.12	0.05	0	4.26
100	J43		0.50	0.17	0.08	0	2.96
100	L28		0.50	0.43	0.23	0	1.16
100	S20		0.50	0.08	0.11	0	6.05
100	D25		0.49	0.21	0.10	0	2.40
100	S08		0.49	0.08	0.09	0	6.00
100	F48		0.49	0.08	0.03	0	5.96
100	L24		0.47	0.11	0.11	0	4.11
100	J27		0.45	0.07	0.03	0	6.84
100	P19		0.44	0.08	0.03	0	5.68
100	E26		0.26	0.04	0.02	0	6.61
100	H23		0.26	0.04	0.03	0	5.89
100	M06		0.26	0.12	0.14	0	2.19
100	S12		0.26	0.04	0.02	0	5.89
100	C16		0.25	0.08	0.03	0	2.93
100	C37		0.25	0.04	0.29	0	6.05
100	D06		0.25	0.04	0.02	0	6.05
100	E14		0.25	0.12	0.20	0	2.00
100	F49		0.25	0.04	0.03	0	6.05
100	G08		0.25	0.25	0.21	0	1.00
100	G25		0.25	0.76	0.35	0	0.32
100	L29		0.25	0.25	0.10	0	0.98
100	L35		0.25	0.13	0.07	0	1.97
100	R16		0.25	0.08	0.03	0	2.93
100	S01		0.25	0.35	0.15	0	0.71
100	C41		0.25	0.04	0.02	0	5.96
100	D04		0.25	0.04	0.02	0	5.96
100	D15		0.25	0.04	0.02	0	5.96
100	E05		0.25	0.25	0.15	0	0.99
100	E33		0.25	0.08	0.03	0	2.98
100	H18		0.25	0.09	0.03	0	2.90
100	J09		0.25	0.34	0.27	0	0.73
100	L17		0.25	0.74	0.33	0	0.33
100	L44		0.25	0.09	0.05	0	2.90
100	L45		0.25	0.04	0.02	0	5.96
100	L52		0.25	0.09	0.03	0	2.90

Table 8: Elective Inpatient FCE Rates per Hundred Thousand by Specialty and HRG - 1996/97

Specialty	HRG	Barking & Havering	Bexley & Greenwich	South London	Greater London	Barking/ S.London Ratio	Bexley/ S.London Ratio
100	M08		0.25	0.04	0.03	0	5.96
100	R15		0.25	0.09	0.07	0	2.90
100	D20		0.22	0.07	0.03	0	3.02
100	D32		0.22	0.03	0.03	0	6.84
100	G07		0.22	0.23	0.14	0	0.97
100	H24		0.22	0.26	0.12	0	0.86
100	H54		0.22	0.03	0.03	0	6.84
100	P12		0.22	0.04	0.03	0	5.68

Table 8: Elective Inpatient FCE Rates per Hundred Thousand by Specialty and HRG - 1996/97

Specialty	HRG	Barking & Havering	Bexley & Greenwich	South London	Greater London	Barking/ S.London Ratio	Bexley/ S.London Ratio
101	L27	65.00	87.34	54.79	40.88	1.19	1.59
101	L17	53.82	41.18	33.72	31.59	1.60	1.22
101	L19	29.12	33.86	24.49	20.05	1.19	1.38
101	L28	27.30	40.96	23.93	21.42	1.14	1.71
101	L29	20.02	16.78	10.23	9.12	1.96	1.64
101	L21	19.50	32.62	26.29	20.74	0.74	1.24
101	L43	16.38	19.10	10.85	10.25	1.51	1.76
101	L13	14.30	7.52	7.74	7.10	1.85	0.97
101	S22	12.74	12.43	10.81	8.39	1.18	1.15
101	L12	12.74	9.80	8.06	7.87	1.58	1.22
101	L18	10.92	7.09	3.83	3.00	2.85	1.85
101	L26	9.88	2.18	3.01	3.71	3.28	0.72
101	L04	9.88	1.42	2.53	3.01	3.90	0.56
101	L34	9.10	8.93	8.25	7.05	1.10	1.08
101	U07	8.58	2.60	4.37	8.70	1.97	0.60
101	L02	8.06	8.70	5.97	5.21	1.35	1.46
101	L39	8.06	7.05	4.44	5.61	1.81	1.59
101	L33	7.54	2.49	1.89	2.81	3.99	1.32
101	L35	6.24	7.39	7.53	7.23	0.83	0.98
101	L16	4.16	3.92	3.09	3.01	1.35	1.27
101	L37	3.64	1.49	2.88	2.17	1.26	0.52
101	L20	3.38	17.34	6.89	4.13	0.49	2.52
101	L42	3.12	5.29	4.06	2.69	0.77	1.30
101	L03	3.12	3.11	2.51	2.51	1.24	1.24
101	L15	2.86	5.53	3.96	2.99	0.72	1.40
101	L25	2.86	2.94	1.92	1.81	1.49	1.53
101	L11	2.86	2.67	1.05	1.07	2.73	2.55
101	L30	2.86	0.49	0.84	0.68	3.41	0.59
101	L32	1.56	3.28	1.95	1.13	0.80	1.68
101	L07	1.56	2.76	1.90	1.00	0.82	1.45
101	S25	1.30	0.51	0.29	0.56	4.43	1.73
101	L31	1.04	2.76	1.34	1.07	0.78	2.06
101	U02	1.04	1.73	0.80	2.30	1.30	2.16
101	L38	1.04	1.52	1.55	0.93	0.67	0.98
101	L05	1.04		0.41	0.48	2.53	0
101	L14	0.78	0.71	0.82	0.83	0.96	0.86
101	L06	0.78		0.61	1.06	1.29	0
101	L10	0.78		0.15	0.10	5.29	0
101	L45	0.52	11.73	3.88	2.06	0.13	3.02
101	L24	0.52	4.65	3.40	1.73	0.15	1.37
101	L22	0.52	2.04	1.24	0.80	0.42	1.65
101	L53	0.52	1.91	1.20	0.86	0.43	1.59
101	Q09	0.52	0.74	0.12	0.14	4.20	5.99
101	F75	0.52	0.21	0.10	0.35	4.96	2.02
101	Q10	0.52			0.14	0.00	0
101	F72	0.26	0.74	0.45	0.24	0.57	1.64
101	L40	0.26	0.74	0.16	0.19	1.58	4.52
101	Q14	0.26	0.50	0.32	0.61	0.82	1.56
101	F74	0.26	0.47	0.45	0.38	0.58	1.05
101	G05	0.26	0.26	0.04	0.03	5.96	5.89
101	S19	0.26	0.26	0.16	0.21	1.66	1.64
101	J33	0.26	0.25	0.07	0.06	3.53	3.36
101	J37	0.26	0.25	0.18	0.18	1.42	1.35
101	M03	0.26	0.25	0.19	0.22	1.34	1.28
101	L36	0.26	0.22	0.20	0.18	1.32	1.11

Table 8: Elective Inpatient FCE Rates per Hundred Thousand by Specialty and HRG - 1996/97

Specialty	HRG	Barking & Havering	Bexley & Greenwich	South London	Greater London	Barking/ S.London Ratio	Bexley/ S.London Ratio
101	C24	0.26		0.04	0.03	6.28	0
101	F13	0.26		0.09	0.12	2.98	0
101	F42	0.26		0.08	0.07	3.39	0
101	F54	0.26		0.03	0.04	7.93	0
101	F71	0.26		0.13	0.12	2.02	0
101	G04	0.26		0.04	0.05	6.28	0
101	H21	0.26			0.01	0.00	0
101	J03	0.26			0.01	0.00	0
101	J12	0.26			0.02	0.00	0
101	L09	0.26		0.22	0.19	1.19	0
101	L46	0.26		1.64	0.99	0.16	0
101	M98	0.26			0.02	0.00	0
101	P06	0.26			0.03	0.00	0
101	Q13	0.26			0.07	0.00	0
101	R16	0.26		0.08	0.06	3.07	0
101	S20	0.26		0.04	0.03	6.28	0
101	L98		11.15	2.22	0.92	0	5.02
101	L08		2.03	0.55	0.55	0	3.71
101	L52		2.02	1.03	0.56	0	1.96
101	L54		1.01	0.42	0.25	0	2.41
101	L99		0.99	0.25	0.10	0	3.97
101	S21		0.74	0.29	0.12	0	2.54
101	S98		0.74	0.12	0.05	0	5.96
101	S05		0.51	0.17	0.10	0	3.06
101	L51		0.50	0.35	0.28	0	1.46
101	S01		0.50	0.29	0.12	0	1.72
101	K02		0.50	0.36	0.37	0	1.37
101	S06		0.50	0.12	0.05	0	4.03
101	L23		0.48	0.45	0.28	0	1.06
101	L44		0.47	0.53	0.26	0	0.89
101	M02		0.46	0.20	0.20	0	2.25
101	F17		0.26	0.08	0.05	0	3.22
101	U08		0.26	0.11	0.07	0	2.30
101	C37		0.26	0.08	0.15	0	3.04
101	E36		0.25	0.04	0.02	0	6.05
101	F41		0.25	0.08	0.09	0	3.02
101	Q12		0.25	0.33	0.30	0	0.75
101	F73		0.25	0.38	0.27	0	0.65
101	K03		0.25	0.08	0.05	0	2.99
101	K05		0.25	0.04	0.03	0	5.96
101	F77		0.22	0.03	0.01	0	6.84
101	L41		0.22	0.70	0.33	0	0.32
101	M06		0.22	0.07	0.05	0	3.02
101	M17		0.22	0.07	0.03	0	3.04
101	P21		0.21	0.07	0.16	0	2.95

Table 8: Elective Inpatient FCE Rates per Hundred Thousand by Specialty and HRG - 1996/97

Specialty	HRG	Barking & Havering	Bexley & Greenwich	South London	Greater London	Barking/ S.London Ratio	Bexley/ S.London Ratio
110	H10	107.64	36.39	40.64	35.89	2.65	0.90
110	H02	49.92	50.61	52.12	39.13	0.96	0.97
110	H04	41.86	39.28	39.25	30.42	1.07	1.00
110	H17	37.70	20.42	19.70	18.42	1.91	1.04
110	H13	31.98	9.10	7.17	8.74	4.46	1.27
110	H12	30.16	18.97	19.16	15.25	1.57	0.99
110	H52	26.26	20.79	19.32	16.17	1.36	1.08
110	H19	25.74	23.49	16.42	14.00	1.57	1.43
110	U07	24.44	1.16	4.17	8.25	5.86	0.28
110	S22	22.10	18.49	15.73	10.43	1.40	1.18
110	H22	14.82	5.45	4.33	3.93	3.42	1.26
110	H06	12.74	13.00	12.10	9.94	1.05	1.07
110	H21	12.74	5.82	6.95	5.13	1.83	0.84
110	H14	11.70	12.15	6.96	6.34	1.68	1.75
110	A07	11.18	0.92	1.39	2.26	8.04	0.66
110	H20	10.66	8.47	5.88	5.19	1.81	1.44
110	H11	7.28	9.00	5.76	4.98	1.26	1.56
110	R16	5.98	1.42	1.31	1.55	4.57	1.08
110	R02	5.20	4.92	5.08	4.39	1.02	0.97
110	H40	4.42	2.83	3.80	3.11	1.16	0.74
110	H28	4.42	2.49	2.76	2.30	1.60	0.90
110	H16	4.16	4.99	4.28	3.18	0.97	1.16
110	J37	4.16	2.60	4.35	3.55	0.96	0.60
110	R01	3.12	0.25	0.72	0.90	4.35	0.35
110	H08	2.86	5.16	3.02	1.98	0.95	1.71
110	H18	2.86	4.25	3.34	2.65	0.86	1.27
110	H45	2.86	1.59	1.82	1.28	1.57	0.88
110	H27	2.86	0.75	2.03	1.74	1.41	0.37
110	H37	2.60	1.84	2.59	1.79	1.00	0.71
110	U02	2.34	2.02	1.51	3.73	1.55	1.34
110	P15	2.34	1.52	1.30	0.80	1.80	1.17
110	H32	2.34	0.89	0.85	0.82	2.76	1.04
110	R03	2.08	2.35	3.83	3.33	0.54	0.61
110	J35	1.82	0.22	0.55	0.56	3.31	0.40
110	R15	1.82		0.34	0.48	5.39	0.00
110	H51	1.56	3.46	3.56	2.31	0.44	0.97
110	H24	1.56		0.19	0.31	8.28	0
110	H07	1.30	0.99	2.12	1.47	0.61	0.47
110	A06	1.04	0.69	0.24	0.45	4.41	2.95
110	J30	1.04	0.50	0.54	0.38	1.92	0.93
110	H34	1.04	0.22	0.38	0.32	2.74	0.59
110	H39	0.78	2.27	1.37	0.96	0.57	1.65
110	H29	0.78	0.87	1.33	0.83	0.59	0.66
110	H01	0.78	0.75	0.29	0.34	2.73	2.63
110	H09	0.78	0.67	0.84	0.75	0.92	0.80
110	H26	0.78	0.22	0.30	0.25	2.59	0.75
110	H03	0.78		0.37	0.56	2.11	0
110	Q16	0.78		0.37	0.25	2.10	0
110	H30	0.52	0.50	0.17	0.16	3.12	3.02
110	C34	0.52	0.47	0.89	0.88	0.58	0.53
110	A10	0.52		0.07	0.11	7.93	0
110	A34	0.52		0.03	0.10	15.87	0
110	R17	0.52			0.04	0.00	0
110	J36	0.26	0.51	0.49	0.36	0.54	1.06
110	H15	0.26	0.46	0.18	0.10	1.41	2.49

Table 8: Elective Inpatient FCE Rates per Hundred Thousand by Specialty and HRG - 1996/97

Specialty	HRG	Barking & Havering	Bexley & Greenwich	South London	Greater London	Barking/ S.London Ratio	Bexley/ S.London Ratio
110	H42	0.26	0.45	0.74	0.35	0.35	0.60
110	H25	0.26	0.26	0.27	0.18	0.95	0.94
110	H05	0.26	0.25	1.51	0.87	0.17	0.16
110	H23	0.26	0.25	0.17	0.15	1.55	1.47
110	R18	0.26	0.22	0.11	0.08	2.44	2.10
110	H31	0.26		0.71	0.52	0.37	0
110	H33	0.26		0.57	0.40	0.46	0
110	H41	0.26		0.04	0.05	5.96	0
110	H53	0.26		0.04	0.05	5.96	0
110	H54	0.26		0.12	0.09	2.12	0
110	L05	0.26		0.04	0.01	6.28	0
110	P10	0.26			0.01	0.00	0
110	Q05	0.26			0.02	0.00	0
110	Q14	0.26		0.08	0.07	3.07	0
110	R10	0.26		0.08	0.10	3.37	0
110	S19	0.26		1.47	0.89	0.18	0
110	H48		1.60	0.30	0.12	0	5.32
110	S25		1.21	0.48	0.28	0	2.55
110	Q15		0.74	0.88	0.49	0	0.84
110	P20		0.65	0.33	0.31	0	1.96
110	R09		0.47	0.58	0.40	0	0.81
110	D99		0.26	0.09	0.03	0	3.02
110	F74		0.26	0.04	0.03	0	5.89
110	J29		0.26	0.13	0.05	0	2.05
110	F72		0.25	0.04	0.03	0	6.05
110	E20		0.25	0.04	0.02	0	5.96
110	H35		0.22	0.07	0.01	0	3.11
110	S23		0.22	0.30	0.15	0	0.75
110	J31		0.22	0.35	0.21	0	0.63
110	P23		0.22	0.04	0.01	0	5.68

Table 8: Elective Inpatient FCE Rates per Hundred Thousand by Specialty and HRG - 1996/97

Specialty	HRG	Barking & Havering	Bexley & Greenwich	South London	Greater London	Barking/ S.London Ratio	Bexley/ S.London Ratio
120	C24	335.39	168.17	107.48	126.31	3.12	1.56
120	C22	108.42	40.90	30.98	36.17	3.50	1.32
120	C31	28.86	31.57	16.34	17.42	1.77	1.93
120	C32	23.14	13.86	10.31	12.03	2.25	1.35
120	C01	16.90	16.02	8.44	9.61	2.00	1.90
120	C02	10.40	7.07	5.11	5.39	2.04	1.38
120	S22	7.80	8.04	5.90	5.46	1.32	1.36
120	C34	6.50	5.24	5.65	5.40	1.15	0.93
120	U07	5.46	7.01	2.65	5.36	2.06	2.65
120	C21	4.42	1.53	0.66	1.04	6.70	2.32
120	C44	3.12	2.12	2.28	2.36	1.37	0.93
120	U02	3.12	1.71	2.03	4.08	1.54	0.84
120	D31	3.12	1.63	0.87	1.45	3.58	1.86
120	K01	2.34	4.32	1.51	1.25	1.55	2.87
120	C07	2.08	3.19	1.43	1.82	1.45	2.22
120	C42	2.08	1.19	0.89	0.94	2.34	1.34
120	C14	1.56	2.89	1.57	1.69	1.00	1.84
120	C41	1.30	1.20	1.08	0.81	1.20	1.11
120	C43	1.30	0.98	1.01	0.95	1.29	0.97
120	C54	0.78	2.96	1.77	1.86	0.44	1.67
120	Q10	0.78	1.69	1.39	1.26	0.56	1.22
120	T14	0.78	0.21	0.14	0.51	5.59	1.51
120	K02	0.78			0.06	0.00	0
120	F07	0.52	0.26	0.04	0.10	11.92	5.89
120	C12	0.26	1.19	0.79	0.72	0.33	1.49
120	C36	0.26	0.51	0.17	0.22	1.51	2.98
120	B08	0.26	0.26	0.15	0.22	1.73	1.71
120	B07	0.26	0.25	0.08	0.08	3.07	2.93
120	C16	0.26	0.25	0.29	0.22	0.89	0.84
120	C45	0.26	0.22	0.03	0.08	7.93	6.84
120	B12	0.26			0.02	0.00	0
120	C26	0.26		0.04	0.05	5.96	0
120	D02	0.26		0.03	0.06	7.84	0
120	F04	0.26		0.08	0.10	3.22	0
120	H22	0.26			0.02	0.00	0
120	P06	0.26		0.04	0.03	6.75	0
120	Q09	0.26		0.21	0.12	1.22	0
120	J37		1.99	1.28	1.32	0	1.55
120	C11		0.87	0.47	0.42	0	1.84
120	J35		0.87	0.21	0.26	0	4.10
120	C17		0.69	0.42	0.33	0	1.61
120	H44		0.45	0.13	0.09	0	3.42
120	S19		0.44	0.19	0.16	0	2.34
120	J30		0.26	0.17	0.17	0	1.55
120	H17		0.25	0.07	0.06	0	3.36
120	U01		0.25	0.13	0.05	0	1.97
120	F01		0.25	0.16	0.09	0	1.50
120	S13		0.22	0.03	0.01	0	6.84
120	L39		0.22	0.07	0.01	0	3.05
120	P04		0.22	0.04	0.07	0	5.68
120	P23		0.22	0.04	0.01	0	5.68

Table 8: Elective Inpatient FCE Rates per Hundred Thousand by Specialty and HRG - 1996/97

Specialty	HRG	Barking & Havering	Bexley & Greenwich	South London	Greater London	Barking/ S.London Ratio	Bexley/ S.London Ratio
130	B02	56.42	103.58	46.83	58.50	1.20	2.21
130	B09	26.00	20.28	22.67	23.24	1.15	0.89
130	B03	19.50	54.32	30.77	27.44	0.63	1.77
130	B07	14.30	27.65	13.85	11.83	1.03	2.00
130	B01	11.70	14.34	9.92	10.79	1.18	1.44
130	B08	10.66	9.12	7.28	8.12	1.46	1.25
130	S22	8.32	13.14	4.44	4.77	1.87	2.96
130	B05	7.28	9.69	6.76	5.88	1.08	1.43
130	U07	5.20	1.25	2.06	3.14	2.53	0.61
130	B06	3.38	8.08	6.23	5.17	0.54	1.30
130	U02	1.30	0.65	0.89	2.10	1.46	0.73
130	B10	1.04	0.72	0.43	0.21	2.39	1.65
130	S25	1.04			0.07	0.00	0
130	B04	0.78	0.47	0.58	0.57	1.36	0.82
130	B11	0.26	0.70	0.76	0.58	0.34	0.92
130	J37	0.26			0.01	0.00	0
130	Q10	0.26			0.02	0.00	0
130	B12		0.71	0.82	0.49	0	0.86
130	E18		0.25	0.12	0.03	0	2.05
130	A02		0.22	0.18	0.10	0	1.24
130	A34		0.22	0.14	0.07	0	1.61

Table 8: Elective Inpatient FCE Rates per Hundred Thousand by Specialty and HRG - 1996/97

Specialty	HRG	Barking & Havering	Bexley & Greenwich	South London	Greater London	Barking/ S.London Ratio	Bexley/ S.London Ratio
140	C14	89.96	80.78	58.00	42.23	1.55	1.39
140	C35	5.98	3.82	3.57	3.13	1.68	1.07
140	C24	5.46	3.11	3.35	2.43	1.63	0.93
140	S22	3.90	3.16	1.60	1.11	2.44	1.97
140	C25	3.64	3.63	3.36	2.46	1.08	1.08
140	H10	3.64	1.57	0.47	0.48	7.70	3.32
140	C44	2.60	2.25	3.30	2.18	0.79	0.68
140	C34	2.34	1.91	1.63	1.17	1.43	1.17
140	U07	2.08	2.07	2.06	2.81	1.01	1.00
140	C15	2.08	1.56	1.13	0.70	1.83	1.37
140	J37	1.30	0.90	0.98	1.00	1.33	0.92
140	C32	1.30	0.67	1.12	0.65	1.16	0.60
140	C04	0.52	2.03	1.90	1.09	0.27	1.06
140	C43	0.52	0.50	0.63	0.51	0.83	0.80
140	B08	0.52	0.47	1.24	0.72	0.42	0.38
140	Q10	0.52	0.47	0.40	0.32	1.30	1.18
140	C45	0.52	0.22	0.16	0.20	3.28	1.41
140	C02	0.52		0.45	0.34	1.17	0
140	H17	0.52		0.15	0.10	3.52	0
140	H22	0.52		0.07	0.04	7.29	0
140	C22	0.26	1.17	0.54	0.27	0.48	2.15
140	C12	0.26			0.01	0.00	0
140	C37	0.26		0.11	0.22	2.27	0
140	J35	0.26		0.14	0.23	1.83	0
140	Q09	0.26		0.04	0.03	5.96	0
140	Q13	0.26			0.01	0.00	0
140	S20	0.26		0.03	0.03	7.93	0
140	C54		0.51	0.50	0.31	0	1.03
140	J30		0.51	0.09	0.08	0	5.89
140	A01		0.49	0.16	0.08	0	3.00
140	C41		0.45	0.13	0.05	0	3.42
140	H33		0.26	0.04	0.02	0	6.61
140	H43		0.26	0.07	0.03	0	3.61
140	E11		0.26	0.04	0.02	0	5.89
140	B05		0.25	0.35	0.18	0	0.71
140	J32		0.25	0.20	0.09	0	1.25
140	A06		0.22	0.03	0.04	0	6.84
140	A28		0.22	0.03	0.03	0	6.84
140	C07		0.22	0.10	0.14	0	2.28
140	C17		0.22	0.15	0.13	0	1.49
140	C21		0.22	0.18	0.07	0	1.24
140	C31		0.22	0.03	0.03	0	6.84
140	H44		0.22	0.28	0.12	0	0.79
140	J36		0.22	0.07	0.06	0	3.02
140	Q14		0.22	0.03	0.01	0	6.84
140	J31		0.21	0.07	0.04	0	3.21
140	P19		0.21	0.03	0.01	0	6.38

Table 9: Number of Elective Inpatient Beddays Saved 1996/97 by Specialty

Specialty	HRG	Barking Beddays	Avg LOS	S. Lon. rate applied to Barking Pop	New beddays	Beddays Saved
100	U07	565	4.83	28.92	139.64	425.36
100	Q02	514	14.28	23.01	328.49	185.51
100	J04	305	2.56	50.92	130.50	174.50
100	J37	248	1.77	54.54	96.61	151.39
100	G14	653	3.71	136.36	505.94	147.06
100	Q11	327	1.33	139.35	185.98	141.02
100	F73	411	2.76	106.80	294.60	116.40
100	F34	415	9.02	34.54	311.65	103.35
100	F31	877	16.55	46.87	775.63	101.37
100	F11	168	16.80	4.51	75.82	92.18
100	F43	132	10.15	5.48	55.65	76.35
100	L42	83	6.38	4.02	25.64	57.36
100	L04	55	18.33	0.00	0.00	55.00
100	J02	671	7.46	83.15	619.91	51.09
100	J05	109	1.58	37.22	58.80	50.20
100	F23	161	23.00	5.03	115.74	45.26
100	C54	63	63.00	0.33	20.50	42.50
100	F54	66	1.78	15.49	27.64	38.36
100	Q10	79	1.84	22.47	41.29	37.71
100	F12	231	14.44	13.39	193.33	37.67
100	G04	56	9.33	2.21	20.67	35.33
100	F95	84	1.47	33.24	48.98	35.02
100	L43	61	1.69	16.02	27.14	33.86
100	J03	158	4.79	25.93	124.15	33.85
100	C44	40	3.64	2.19	7.98	32.02
100	G13	241	5.74	36.45	209.18	31.82
100	G02	65	10.83	3.32	35.97	29.03
100	F21	62	12.40	2.69	33.41	28.59
100	F53	48	3.00	6.89	20.68	27.32
100	J12	32	8.00	0.63	5.00	27.00
100	K01	240	4.29	49.83	213.57	26.43
100	F74	374	1.96	177.95	348.44	25.56
100	J01	58	8.29	3.96	32.82	25.18
100	J34	29	29.00	0.16	4.62	24.38
100	H11	27	6.75	0.41	2.76	24.24
100	G05	31	4.43	2.06	9.11	21.89
100	L39	31	0.72	13.20	9.51	21.49
100	J35	39	2.44	7.35	17.92	21.08
100	J30	168	12.92	11.48	148.36	19.64
100	K03	36	9.00	2.13	19.19	16.81
100	F55	44	8.80	3.14	27.59	16.41
100	P05	16	16.00	0.00	0.00	16.00
100	J36	23	1.35	5.20	7.03	15.97
100	F75	15	0.75	1.40	1.05	13.95
100	K02	46	5.11	6.54	33.42	12.58
100	F37	61	2.65	18.56	49.22	11.78
100	G21	46	15.33	2.27	34.78	11.22
100	Q01	26	13.00	1.14	14.78	11.22
100	Q09	23	4.60	2.69	12.38	10.62
100	H13	10	1.11	0.82	0.91	9.09

Table 9: Number of Elective Inpatient Beddays Saved 1996/97 by Specialty

Specialty	HRG	Barking Beddays	Avgc LOS	S.Lon.rate applied to Barking Pop	New beddays	Beddays Saved
100	B05	9	3.00	0.00	0.00	9.00
100	C01	9	1.80	0.16	0.29	8.71
100	M16	10	10.00	0.16	1.57	8.43
100	C14	9	0.90	1.14	1.03	7.97
100	E18	7	7.00	0.00	0.00	7.00
100	C02	8	2.67	0.44	1.16	6.84
100	G12	61	10.17	5.34	54.32	6.68
100	C34	29	3.22	7.02	22.62	6.38
100	F61	21	10.50	1.40	14.68	6.32
100	H17	7	1.17	1.29	1.51	5.49
100	S03	10	5.00	0.94	4.72	5.28
100	L51	5	5.00	0.00	0.00	5.00
100	L11	6	6.00	0.17	1.01	4.99
100	F63	6	0.86	2.27	1.94	4.06
100	L46	4	2.00	0.00	0.00	4.00
100	M18	4	2.00	0.15	0.30	3.70
100	Q14	251	2.89	85.83	247.64	3.36
100	P06	3	1.50	0.00	0.00	3.00
100	G16	4	4.00	0.28	1.13	2.87
100	J31	6	3.00	1.17	3.50	2.50
100	L13	3	3.00	0.17	0.50	2.50
100	A15	3	3.00	0.29	0.88	2.12
100	A34	2	2.00	0.00	0.00	2.00
100	K10	2	2.00	0.00	0.00	2.00
100	L06	2	2.00	0.00	0.00	2.00
100	F44	22	1.69	11.90	20.13	1.87
100	L38	4	1.33	1.61	2.14	1.86
100	H19	2	2.00	0.13	0.25	1.75
100	G03	5	1.67	2.01	3.35	1.65
100	K17	17	8.50	1.81	15.38	1.62
100	F13	62	6.20	9.74	60.41	1.59
100	Q04	53	26.50	1.94	51.45	1.55
100	F18	9	2.25	3.32	7.46	1.54
100	L14	12	12.00	0.90	10.85	1.15
100	B08	1	1.00	0.00	0.00	1.00
100	C31	1	1.00	0.00	0.00	1.00
100	H12	1	1.00	0.00	0.00	1.00
100	H14	1	1.00	0.00	0.00	1.00
100	L30	1	1.00	0.00	0.00	1.00
100	F35	35	0.65	52.65	34.12	0.88
100	D05	2	2.00	0.57	1.13	0.87
100	L41	3	0.75	2.99	2.25	0.75
100	F52	47	6.71	6.89	46.25	0.75
100	G22	3	1.50	1.57	2.35	0.65
100	K06	1	1.00	0.38	0.38	0.62
100	F42	28	3.50	7.84	27.46	0.54
100	U08	2	2.00	0.79	1.58	0.42
100	S06	2	2.00	0.80	1.60	0.40
100	F77	0	0.00	1.75	0.00	0.00
100	F16	0	0.00	4.76	0.00	0.00

Table 9: Number of Elective Inpatient Beddays Saved 1996/97 by Specialty

Specialty	HRG	Barking Beddays	Avgc LOS	S. Lon. rate applied to Barking Pop	New beddays	Beddays Saved
100	M02	0	0.00	1.09	0.00	0.00
100	J08	0	0.00	0.41	0.00	0.00
100	C06	0	0.00	0.00	0.00	0.00
100	P20	0	0.00	0.00	0.00	0.00
100	H16	2	2.00	1.07	2.15	-0.15
100	S19	4	2.00	2.23	4.46	-0.46
100	S14	2	2.00	1.32	2.65	-0.65
100	F45	6	6.00	1.12	6.72	-0.72
100	F76	4	2.00	2.39	4.79	-0.79
100	C43	3	3.00	1.29	3.87	-0.87
100	K09	3	3.00	1.39	4.17	-1.17
100	F06	3	0.30	14.22	4.27	-1.27
100	Q06	5	5.00	1.26	6.31	-1.31
100	M03	1	1.00	2.54	2.54	-1.54
100	S22	121	1.48	83.09	122.60	-1.60
100	L21	1	1.00	2.71	2.71	-1.71
100	F15	1	1.00	2.99	2.99	-1.99
100	F41	41	5.86	7.40	43.36	-2.36
100	F94	18	3.00	6.80	20.40	-2.40
100	C24	1	1.00	3.51	3.51	-2.51
100	A22	20	20.00	1.14	22.80	-2.80
100	F56	12	12.00	1.24	14.87	-2.87
100	J33	10	2.50	5.18	12.94	-2.94
100	Q08	68	13.60	5.24	71.26	-3.26
100	Q03	399	12.47	32.34	403.26	-4.26
100	J10	11	11.00	1.40	15.36	-4.36
100	J06	32	5.33	7.03	37.52	-5.52
100	F14	3	3.00	2.96	8.89	-5.89
100	F96	27	2.45	13.68	33.58	-6.58
100	F08	3	3.00	3.46	10.39	-7.39
100	S05	5	5.00	2.69	13.44	-8.44
100	L02	9	9.00	1.95	17.54	-8.54
100	F71	64	4.92	15.05	74.09	-10.09
100	F07	57	8.14	8.43	68.64	-11.64
100	M07	6	6.00	3.07	18.43	-12.43
100	F51	54	9.00	7.44	66.99	-12.99
100	F82	7	2.33	9.20	21.47	-14.47
100	L27	5	5.00	3.99	19.96	-14.96
100	F93	152	2.71	61.88	167.97	-15.97
100	J44	24	8.00	5.05	40.39	-16.39
100	Q07	29	2.07	21.91	45.39	-16.39
100	Q17	19	3.80	10.18	38.68	-19.68
100	J07	29	1.61	30.44	49.05	-20.05
100	J38	7	7.00	3.88	27.14	-20.14
100	G19	26	3.25	14.55	47.29	-21.29
100	F72	122	4.36	33.56	146.24	-24.24
100	Q18	5	5.00	6.40	32.02	-27.02
100	G24	19	9.50	4.91	46.67	-27.67
100	Q15	342	34.20	10.87	371.91	-29.91
100	F33	134	16.75	9.85	165.01	-31.01

Table 9: Number of Elective Inpatient Beddays Saved 1996/97 by Specialty

Specialty	HRG	Barking Beddays	Avgc LOS	S.Lon.rate applied to Barking Pop	New beddays	Beddays Saved
100	F46	29	3.63	17.55	63.60	-34.60
100	G18	31	5.17	13.43	69.37	-38.37
100	G17	5	5.00	9.20	46.01	-41.01
100	F17	35	11.67	6.74	78.67	-43.67
100	F91	16	5.33	12.26	65.37	-49.37
100	F92	85	3.27	43.11	140.93	-55.93
100	J11	38	6.33	15.76	99.80	-61.80
100	U02	42	10.50	10.30	108.19	-66.19
100	Q13	78	11.14	12.98	144.61	-66.61
100	F01	165	33.00	7.41	244.65	-79.65
100	S25	18	6.00	19.04	114.24	-96.24
100	G15	36	9.00	16.08	144.72	-108.72
100	F47	12	12.00	10.59	127.11	-115.11
100	Q05	25	8.33	20.10	167.48	-142.48
100	Q12	159	4.08	74.04	301.85	-142.85
100	F22	45	15.00	13.26	198.86	-153.86
100	F36	142	5.92	50.21	297.08	-155.08
100	F32	942	13.27	83.82	1112.03	-170.03
Total Potential Beddays Saved						894.47

Table 9: Number of Elective Inpatient Beddays Saved 1996/97 by Specialty

Specialty	HRG	Barking Beddays	Avg LOS	S. Lon. rate applied to Barking Pop	New beddays	Beddays Saved
101	L17	848	4.10	129.71	531.39	316.61
101	L26	277	7.29	11.59	84.50	192.50
101	L27	1057	4.23	210.73	890.98	166.02
101	L29	290	3.77	39.34	148.16	141.84
101	L04	190	5.00	9.75	48.75	141.25
101	L02	356	11.48	22.98	263.84	92.16
101	L33	109	3.76	7.26	27.30	81.70
101	L18	116	2.76	14.73	40.67	75.33
101	L12	127	2.59	31.00	80.35	46.65
101	L13	101	1.84	29.78	54.68	46.32
101	L28	360	3.43	92.06	315.62	44.38
101	L11	68	6.18	4.03	24.90	43.10
101	L43	118	1.87	41.73	78.16	39.84
101	L19	236	2.11	94.19	198.46	37.54
101	U07	70	2.12	16.79	35.62	34.38
101	L25	74	6.73	7.37	49.60	24.40
101	L03	79	6.58	9.64	63.49	15.51
101	J12	15	15.00	0.00	0.00	15.00
101	L39	30	0.97	17.09	16.54	13.46
101	M98	13	13.00	0.00	0.00	13.00
101	L16	45	2.81	11.89	33.43	11.57
101	F13	12	12.00	0.34	4.03	7.97
101	S22	52	1.06	41.56	44.10	7.90
101	L30	11	1.00	3.22	3.22	7.78
101	L34	82	2.34	31.72	74.31	7.69
101	Q09	10	5.00	0.48	2.38	7.62
101	L37	36	2.57	11.08	28.49	7.51
101	F54	7	7.00	0.13	0.88	6.12
101	C24	7	7.00	0.16	1.11	5.89
101	S20	7	7.00	0.16	1.11	5.89
101	S25	6	1.20	1.13	1.36	4.64
101	L05	7	1.75	1.58	2.77	4.23
101	F42	6	6.00	0.30	1.77	4.23
101	L10	5	1.67	0.57	0.95	4.05
101	Q10	4	2.00	0.00	0.00	4.00
101	U02	15	3.75	3.07	11.52	3.48
101	S19	8	8.00	0.60	4.81	3.19
101	J03	3	3.00	0.00	0.00	3.00
101	M03	8	8.00	0.75	5.97	2.03
101	L06	9	3.00	2.33	6.99	2.01
101	Q13	2	2.00	0.00	0.00	2.00
101	G04	2	2.00	0.16	0.32	1.68
101	F71	3	3.00	0.49	1.48	1.52
101	H21	1	1.00	0.00	0.00	1.00
101	G05	1	1.00	0.17	0.17	0.83
101	L09	5	5.00	0.84	4.20	0.80
101	F75	1	0.50	0.40	0.20	0.80
101	J33	1	1.00	0.28	0.28	0.72
101	J37	2	2.00	0.70	1.41	0.59
101	L36	2	2.00	0.76	1.51	0.49

Table 9: Number of Elective Inpatient Beddays Saved 1996/97 by Specialty

Specialty	HRG	Barking Beddays	Avgc LOS	S.Lon.rate applied to Barking Pop	New beddays	Beddays Saved
101	L40	0	0.00	0.63	0.00	0.00
101	P06	0	0.00	0.00	0.00	0.00
101	R16	0	0.00	0.33	0.00	0.00
101	L14	21	7.00	3.14	21.99	-0.99
101	L53	1	0.50	4.61	2.30	-1.30
101	Q14	6	6.00	1.22	7.32	-1.32
101	F72	2	2.00	1.74	3.49	-1.49
101	F74	3	3.00	1.72	5.17	-2.17
101	L32	9	1.50	7.50	11.24	-2.24
101	L31	13	3.25	5.16	16.76	-3.76
101	L07	22	3.67	7.31	26.80	-4.80
101	L46	1	1.00	6.31	6.31	-5.31
101	L22	4	2.00	4.77	9.54	-5.54
101	L42	30	2.50	15.62	39.04	-9.04
101	L35	50	2.08	28.96	60.33	-10.33
101	L24	2	1.00	13.08	13.08	-11.08
101	L45	3	1.50	14.92	22.39	-19.39
101	L38	40	10.00	5.98	59.75	-19.75
101	L20	39	3.00	26.49	79.46	-40.46
101	L21	132	1.76	101.10	177.94	-45.94
101	L15	186	16.91	15.22	257.34	-71.34
Total Potential Beddays Saved						1445.94

Table 9: Number of Elective Inpatient Beddays Saved 1996/97 by Specialty

Specialty	HRG	Barking Beddays	Avg LOS	S.Lon.rate applied to Barking Pop	New beddays	Beddays Saved
110	H10	819	1.98	156.33	309.26	509.74
110	H17	474	3.27	75.76	247.64	226.36
110	H13	250	2.03	27.58	56.06	193.94
110	U07	204	2.17	16.05	34.83	169.17
110	H19	460	4.65	63.17	293.51	166.49
110	H12	420	3.62	73.68	266.78	153.22
110	H04	2246	13.95	150.96	2105.98	140.02
110	H21	266	5.43	26.75	145.20	120.80
110	H14	148	3.29	26.75	87.98	60.02
110	H06	1003	20.47	46.53	952.47	50.53
110	H52	179	1.77	74.32	131.72	47.28
110	H22	53	0.93	16.66	15.49	37.51
110	R16	47	2.04	5.03	10.28	36.72
110	H28	94	5.53	10.61	58.69	35.31
110	H01	54	18.00	1.10	19.76	34.24
110	A07	36	0.84	5.35	4.47	31.53
110	H20	67	1.63	22.63	36.98	30.02
110	S22	97	1.14	60.52	69.06	27.94
110	H03	39	13.00	1.42	18.48	20.52
110	P10	20	20.00	0.00	0.00	20.00
110	R15	21	3.00	1.30	3.90	17.10
110	H11	77	2.75	22.14	60.88	16.12
110	H32	21	2.33	3.26	7.61	13.39
110	H24	14	2.33	0.72	1.69	12.31
110	H40	71	4.18	14.61	61.04	9.96
110	H34	14	3.50	1.46	5.12	8.88
110	H27	30	2.73	7.81	21.30	8.70
110	U02	22	2.44	5.80	14.18	7.82
110	J30	16	4.00	2.08	8.31	7.69
110	R01	9	0.75	2.76	2.07	6.93
110	J35	9	1.29	2.12	2.72	6.28
110	H45	17	1.55	6.99	10.80	6.20
110	A06	8	2.00	0.91	1.81	6.19
110	R17	6	3.00	0.00	0.00	6.00
110	Q05	6	6.00	0.00	0.00	6.00
110	R10	8	8.00	0.30	2.37	5.63
110	A10	6	3.00	0.25	0.76	5.24
110	Q16	10	3.33	1.43	4.76	5.24
110	H53	5	5.00	0.17	0.84	4.16
110	P15	9	1.00	5.00	5.00	4.00
110	H26	6	2.00	1.16	2.31	3.69
110	R02	153	7.65	19.54	149.48	3.52
110	H23	8	8.00	0.65	5.16	2.84
110	A34	3	1.50	0.13	0.19	2.81
110	H30	4	2.00	0.64	1.28	2.72
110	L05	3	3.00	0.16	0.48	2.52
110	R18	2	2.00	0.41	0.82	1.18
110	H54	2	2.00	0.47	0.94	1.06
110	H15	3	3.00	0.71	2.13	0.87
110	Q14	1	1.00	0.33	0.33	0.67

Table 9: Number of Elective Inpatient Beddays Saved 1996/97 by Specialty

Specialty	HRG	Barking Beddays	Avgc LOS	S.Lon.rate applied to Barking Pop	New beddays	Beddays Saved
110	H37	69	6.90	9.95	68.68	0.32
110	H41	0	0.00	0.17	0.00	0.00
110	H25	4	4.00	1.06	4.22	-0.22
110	H09	12	4.00	3.25	12.98	-0.98
110	J37	34	2.13	16.71	35.52	-1.52
110	H31	1	1.00	2.71	2.71	-1.71
110	H16	65	4.06	16.46	66.88	-1.88
110	H33	2	2.00	2.19	4.38	-2.38
110	J36	3	3.00	1.87	5.60	-2.60
110	H42	2	2.00	2.86	5.72	-3.72
110	C34	7	3.50	3.44	12.03	-5.03
110	H08	117	10.64	11.62	123.54	-6.54
110	H18	76	6.91	12.84	88.70	-12.70
110	H39	17	5.67	5.28	29.93	-12.93
110	S19	3	3.00	5.67	17.01	-14.01
110	H29	23	7.67	5.10	39.10	-16.10
110	H07	34	6.80	8.15	55.40	-21.40
110	H51	27	4.50	13.69	61.59	-34.59
110	H05	8	8.00	5.82	46.58	-38.58
110	R03	62	7.75	14.72	114.08	-52.08
110	H02	2337	12.17	200.48	2440.22	-103.22
Total Potential Beddays Saved						1965.19

Table 9: Number of Elective Inpatient Beddays Saved 1996/97 by Specialty

Specialty	HRG	Barking Beddays	Avgc LOS	S.Lon.rate applied to Barking Pop	New beddays	Beddays Saved
120	C24	1498	1.16	413.38	480.04	1017.96
120	C22	471	1.13	119.14	134.57	336.43
120	C32	118	1.33	39.64	52.56	65.44
120	C31	142	1.28	62.83	80.38	61.62
120	C01	61	0.94	32.45	30.45	30.55
120	C26	26	26.00	0.17	4.36	21.64
120	K01	52	5.78	5.79	33.45	18.55
120	C44	59	4.92	8.76	43.06	15.94
120	C21	18	1.06	2.54	2.69	15.31
120	C45	17	17.00	0.13	2.14	14.86
120	C02	29	0.73	19.65	14.25	14.75
120	F07	15	7.50	0.17	1.26	13.74
120	C42	24	3.00	3.43	10.28	13.72
120	K02	10	3.33	0.00	0.00	10.00
120	D02	11	11.00	0.13	1.40	9.60
120	C43	43	8.60	3.89	33.42	9.58
120	D31	12	1.00	3.35	3.35	8.65
120	U02	21	1.75	7.80	13.64	7.36
120	U07	13	0.62	10.17	6.30	6.70
120	C34	44	1.76	21.72	38.23	5.77
120	P06	6	6.00	0.15	0.89	5.11
120	C41	22	4.40	4.17	18.33	3.67
120	B08	8	8.00	0.58	4.63	3.37
120	B12	3	3.00	0.00	0.00	3.00
120	C07	8	1.00	5.51	5.51	2.49
120	T14	3	1.00	0.54	0.54	2.46
120	S22	8	0.27	22.70	6.05	1.95
120	H22	1	1.00	0.00	0.00	1.00
120	C36	1	1.00	0.66	0.66	0.34
120	B07	0	0.00	0.33	0.00	0.00
120	F04	0	0.00	0.31	0.00	0.00
120	Q09	0	0.00	0.82	0.00	0.00
120	C14	7	1.17	6.03	7.03	-0.03
120	C16	5	5.00	1.12	5.62	-0.62
120	C12	2	2.00	3.05	6.10	-4.10
120	Q10	11	3.67	5.33	19.56	-8.56
120	C54	107	35.67	6.82	243.32	-136.32
Total Potential Beddays Saved						1571.91

Table 9: Number of Elective Inpatient Beddays Saved 1996/97 by Specialty

Specialty	HRG	Barking Beddays	Avg LOS	S.Lon.rate applied to Barking Pop	New beddays	Beddays Saved
130	B02	391	1.80	180.12	324.55	66.45
130	B09	209	2.09	87.21	182.27	26.73
130	B08	75	1.83	27.99	51.21	23.79
130	S22	34	1.06	17.08	18.15	15.85
130	B01	76	1.69	38.17	64.46	11.54
130	U07	19	0.95	7.92	7.52	11.48
130	S25	4	1.00	0.00	0.00	4.00
130	B05	45	1.61	26.02	41.82	3.18
130	B07	68	1.24	53.26	65.85	2.15
130	B11	8	2.00	2.94	5.88	2.12
130	Q10	2	2.00	0.00	0.00	2.00
130	J37	1	1.00	0.00	0.00	1.00
130	U02	2	0.40	3.44	1.37	0.63
130	B04	1	0.33	2.21	0.74	0.26
130	B10	1	1.00	1.67	1.67	-0.67
130	B06	21	1.62	23.97	38.73	-17.73
130	B03	141	1.88	118.35	222.49	-81.49
Total Potential Beddays Saved						71.29

Table 9: Number of Elective Inpatient Beddays Saved 1996/97 by Specialty

Specialty	HRG	Barking Beddays	Avg. LOS	S. Lon. rate applied to Barking Pop	New beddays	Beddays Saved
140	C14	405	1.17	223.10	261.14	143.86
140	C35	105	4.57	13.73	62.66	42.34
140	C24	93	4.43	12.87	56.98	36.02
140	C45	47	23.50	0.61	14.35	32.65
140	H10	18	1.29	1.82	2.34	15.66
140	C15	17	2.13	4.36	9.26	7.74
140	C34	24	2.67	6.28	16.73	7.27
140	Q09	8	8.00	0.17	1.34	6.66
140	S20	7	7.00	0.13	0.88	6.12
140	Q10	18	9.00	1.54	13.82	4.18
140	S22	5	0.33	6.16	2.05	2.95
140	H17	4	2.00	0.57	1.14	2.86
140	C25	28	2.00	12.92	25.84	2.16
140	Q13	2	2.00	0.00	0.00	2.00
140	J37	8	1.60	3.76	6.02	1.98
140	H22	2	1.00	0.27	0.27	1.73
140	C37	3	3.00	0.44	1.32	1.68
140	C12	1	1.00	0.00	0.00	1.00
140	C32	6	1.20	4.31	5.17	0.83
140	J35	1	1.00	0.55	0.55	0.45
140	C02	1	0.50	1.71	0.86	0.14
140	U07	4	0.50	7.92	3.96	0.04
140	C22	1	1.00	2.09	2.09	-1.09
140	C43	6	3.00	2.42	7.26	-1.26
140	B08	2	1.00	4.78	4.78	-2.78
140	C04	2	1.00	7.33	7.33	-5.33
140	C44	44	4.40	12.68	55.78	-11.78
Total Potential Beddays Saved						298.07

Table 10: Daycase Rates per Hundred Thousand by Specialty and HRG - 1996/97

Specialty	HRG	Barking & Havering	Bexley & Greenwich	South London	Greater London	Barking/S London Ratio	Bexley/S London Ratio
100	J37	324.46	265.20	212.86	165.32	1.52	1.25
100	F35	95.56	142.27	134.24	85.40	0.71	1.06
100	F95	75.84	17.13	23.23	22.60	3.26	0.74
100	Q11	55.33	21.03	51.19	42.26	1.08	0.41
100	F74	53.29	24.44	42.37	35.14	1.26	0.58
100	L39	47.06	54.32	18.41	13.41	2.56	2.95
100	F63	46.67	1.67	2.44	5.55	19.13	0.68
100	F06	46.41	115.99	68.24	56.38	0.68	1.70
100	S22	23.40	46.11	19.22	12.00	1.22	2.40
100	J35	22.25	24.77	17.26	11.98	1.29	1.44
100	J05	20.60	35.03	27.33	22.78	0.75	1.28
100	F94	20.06	1.26	1.57	2.92	12.79	0.80
100	L43	18.43	27.69	10.54	7.31	1.75	2.63
100	F16	14.46	49.89	33.80	23.00	0.43	1.48
100	U07	13.86	0.25	3.05	6.84	4.54	0.08
100	L41	13.47	84.93	28.31	12.40	0.48	3.00
100	Q10	11.78	6.87	7.38	5.94	1.60	0.93
100	F54	9.99	14.48	10.60	8.74	0.94	1.37
100	H13	8.65	4.01	4.28	3.77	2.02	0.94
100	F73	8.58	3.05	5.26	3.53	1.63	0.58
100	F75	7.86	5.62	2.99	2.64	2.62	1.88
100	C01	7.80	9.93	5.93	3.89	1.32	1.67
100	C14	7.21	9.80	3.03	2.60	2.38	3.23
100	J44	6.22	1.66	4.28	2.93	1.46	0.39
100	J04	6.21	9.42	7.90	6.56	0.79	1.19
100	J07	4.76	15.71	8.62	13.93	0.55	1.82
100	C02	4.34	4.20	2.94	1.51	1.48	1.43
100	J36	4.33	4.70	2.76	1.62	1.57	1.71
100	H11	4.32	1.44	0.97	1.88	4.47	1.49
100	H17	3.95	0.93	0.79	1.43	5.00	1.18
100	F93	2.90	2.26	5.24	4.12	0.55	0.43
100	F72	2.87	2.29	1.86	1.71	1.54	1.23
100	F05	2.85	6.03	2.81	3.05	1.01	2.14
100	B05	2.70	6.57	3.11	1.96	0.87	2.11
100	Q07	2.25	1.49	3.12	2.14	0.72	0.48
100	F34	1.77		0.24	0.41	7.24	0
100	D05	1.77	3.12	0.87	0.78	2.02	3.57
100	F53	1.72	1.52	1.81	1.30	0.95	0.84
100	J03	1.58	0.67	1.05	0.73	1.51	0.64
100	C21	1.57	2.13	0.96	1.31	1.63	2.22
100	C34	1.30	0.44	2.20	1.92	0.59	0.20
100	H12	1.29		0.04	0.68	31.62	0
100	J98	0.80			0.12		
100	F37	0.80	0.50	6.40	2.53	0.12	0.08
100	G22	0.53		0.04	0.05	12.19	0
100	F44	0.53	5.07	2.75	1.59	0.19	1.84
100	J33	0.53	0.76	1.26	0.98	0.42	0.60
100	M02	0.53	0.22	0.50	0.40	1.07	0.45
100	F42	0.53	3.86	0.99	0.85	0.53	3.90
100	C24	0.52	0.70	0.67	0.41	0.77	1.04
100	C11	0.52		0.37	0.18	1.41	0
100	F96	0.50	0.22	0.88	0.56	0.57	0.25
100	H19	0.50		0.11	0.26	4.71	0
100	L42	0.47	0.99	0.37	0.31	1.27	2.67
100	L21	0.27	6.85	9.93	3.94	0.03	0.69

Table 10: Daycase Rates per Hundred Thousand by Specialty and HRG - 1996/97

Specialty	HRG	Barking & Havering	Bexley & Greenwich	South London	Greater London	Barking/London Ratio	Bexley/London Ratio
100	J34	0.27	0.99	0.33	0.18	0.81	3.02
100	G05	0.27	0.50	0.30	0.11	0.89	1.66
100	Q09	0.27	0.50	0.40	0.24	0.67	1.24
100	F92	0.27	0.25	1.16	0.96	0.23	0.21
100	J10	0.27	0.22	0.07	0.07	4.06	3.42
100	C17	0.27		0.04	0.03	6.50	0
100	C44	0.27		0.11	0.08	2.37	0
100	H22	0.27		0.32	0.32	0.83	0
100	J11	0.27		0.11	0.07	2.49	0
100	Q06	0.27		0.03	0.04	8.12	0
100	F77	0.26			0.09		
100	J08	0.26		0.07	0.04	4.03	0
100	N06	0.26			0.01		
100	H14	0.26			0.03		
100	L34	0.26		0.30	0.14	0.85	0
100	H20	0.26		0.11	0.10	2.40	0
100	P21	0.25		0.03	0.03	7.58	0
100	U08	0.25		0.09	0.23	2.96	0
100	L38	0.24	0.94	0.24	0.13	1.00	3.95
100	Q14	0.24	0.26	2.33	3.28	0.10	0.11
100	B07	0.24	0.25	0.32	0.23	0.74	0.77
100	C22	0.24		0.03	0.04	7.24	0
100	F22	0.24		0.04	0.03	5.79	0
100	F36	0.24		0.89	0.42	0.27	0
100	F46	0.24		0.25	0.16	0.94	0
100	J02	0.24		0.37	0.20	0.64	0
100	G15		8.14	3.26	1.29	0	2.49
100	G17		5.67	2.31	1.04	0	2.45
100	L46		5.13	2.98	1.17	0	1.72
100	L19		3.06	2.70	1.11	0	1.13
100	F15		2.89	1.18	0.55	0	2.46
100	S25		2.72	1.81	0.67	0	1.50
100	F43		1.49	0.92	0.47	0	1.62
100	L35		0.69	0.61	0.24	0	1.11
100	G19		0.51	0.17	0.10	0	2.94
100	J06		0.51	0.91	2.06	0	0.57
100	A07		0.50	3.58	1.04	0	0.14
100	L20		0.49	1.54	0.63	0	0.32
100	Q12		0.49	0.47	0.43	0	1.04
100	F56		0.45	0.13	0.08	0	3.42
100	F17		0.26	0.08	0.05	0	3.04
100	G16		0.26	0.13	0.07	0	2.04
100	G18		0.26	0.04	0.05	0	5.89
100	H16		0.26	0.04	0.08	0	5.89
100	B04		0.25	0.04	0.02	0	6.05
100	F62		0.25	0.08	0.03	0	2.93
100	J43		0.25	0.04	0.02	0	6.05
100	C12		0.25	0.11	0.06	0	2.31
100	F04		0.25	0.21	0.11	0	1.18
100	G04		0.25	0.12	0.06	0	2.13
100	G12		0.25	0.04	0.07	0	5.96
100	G24		0.25	0.04	0.02	0	5.96
100	K01		0.25	0.12	0.24	0	2.09
100	C41		0.22	0.07	0.06	0	3.04
100	F23		0.22	0.03	0.01	0	6.84

Table 10: Daycase Rates per Hundred Thousand by Specialty and HRG - 1996/97

Specialty	HRG	Barking & Havering	Bexley & Greenwich	South London	Greater London	Barking/London Ratio	Bexley/London Ratio
100	F47		0.22	0.60	0.45	0	0.37
100	F91		0.22	0.39	0.28	0	0.58
100	G23		0.22	0.07	0.06	0	3.04
100	J45		0.22	0.03	0.04	0	6.84
100	Q18		0.22	0.07	0.05	0	3.42
100	P13		0.22	0.28	0.11	0	0.78
100	H52		0.21	0.03	0.03	0	6.38

Table 10: Daycase Rates per Hundred Thousand by Specialty and HRG - 1996/97

Specialty	HRG	Barking & Havering	Bexley & Greenwich	South London	Greater London	Barking/ London Ratio	Bexley/ London Ratio
101	L21	442.06	289.20	298.86	271.22	1.48	0.97
101	L30	79.44	5.29	9.07	8.71	8.76	0.58
101	L39	60.99	6.18	13.26	20.38	4.60	0.47
101	L45	52.10	12.13	23.43	24.10	2.22	0.52
101	L20	35.50	30.11	18.48	16.02	1.92	1.63
101	L19	30.49	8.86	14.98	19.82	2.04	0.59
101	L43	22.67	6.55	13.29	10.78	1.71	0.49
101	L35	22.04	29.58	13.68	16.30	1.61	2.16
101	L34	20.71	20.01	10.38	12.34	1.99	1.93
101	L13	13.85	7.32	9.43	8.70	1.47	0.78
101	L38	9.97		0.88	2.24	11.38	0
101	S22	8.91	7.33	7.00	6.17	1.27	1.05
101	U07	8.69	0.47	2.41	6.71	3.60	0.20
101	U02	6.61	4.74	1.82	13.23	3.63	2.60
101	L24	5.90		3.12	5.56	1.89	0
101	L41	4.48	5.74	18.82	10.46	0.24	0.31
101	L12	3.51	0.74	3.76	2.57	0.93	0.20
101	L18	2.57	1.68	0.96	1.34	2.67	1.75
101	L28	2.31		0.22	0.37	10.31	0
101	L27	1.73		0.09	0.27	20.30	0
101	L42	1.72		1.25	1.19	1.38	0
101	F75	1.26		0.10	0.34	11.99	0
101	J37	1.03	0.50	1.05	0.67	0.99	0.47
101	L53	1.03	0.47	1.38	1.29	0.75	0.34
101	L37	1.01	0.72	0.34	0.29	3.00	2.14
101	S25	0.73	0.25	0.56	0.33	1.29	0.44
101	L40	0.53	0.75	0.25	0.37	2.14	3.02
101	L23	0.53	0.22	1.54	0.79	0.35	0.15
101	L29	0.53	0.22	0.58	0.39	0.92	0.39
101	L44	0.52		0.22	0.23	2.32	0
101	L17	0.50		1.62	0.92	0.31	0
101	L32	0.47		0.30	0.27	1.60	0
101	L04	0.27		0.49	0.24	0.54	0
101	L08	0.27		0.81	0.64	0.33	0
101	L33	0.27		0.04	0.09	6.76	0
101	L55	0.27		0.56	1.06	0.48	0
101	J35	0.26		0.08	0.09	3.45	0
101	L03	0.26			0.03		
101	L16	0.26	0.73	3.56	1.95	0.07	0.21
101	F06	0.26	0.25	0.16	0.34	1.61	1.56
101	L10	0.24	0.50	0.34	0.24	0.69	1.44
101	L54	0.24	0.26	0.42	0.40	0.57	0.61
101	F73	0.24		0.04	0.05	5.44	0
101	Q10	0.24		0.08	0.10	2.90	0
101	L98		9.06	4.75	1.99	0	1.91
101	T14		4.22	0.82	0.32	0	5.18
101	S98		1.99	0.67	0.26	0	2.98
101	L36		1.17	0.92	0.60	0	1.26
101	L07		0.49	2.12	1.04	0	0.23
101	F43		0.26	0.09	0.03	0	3.02
101	L31		0.26	0.25	0.23	0	1.03
101	Q07		0.25	0.19	0.06	0	1.31
101	D03		0.22	0.03	0.01	0	6.84
101	F74		0.22	0.12	0.14	0	1.78
101	L02		0.22	0.08	0.05	0	2.66

Table 10: Daycase Rates per Hundred Thousand by Specialty and HRG - 1996/97

Specialty	HRG	Barking & Havering	Bexley & Greenwich	South London	Greater London	Barking/London Ratio	Bexley/London Ratio
110	H10	93.09	78.93	84.39	67.06	1.10	0.94
110	H13	33.90	46.25	56.24	42.27	0.60	0.82
110	H52	14.98	17.14	18.75	13.73	0.80	0.91
110	A07	14.25	6.86	4.68	8.73	3.04	1.46
110	H22	13.87	10.77	10.24	8.69	1.35	1.05
110	H17	13.42	13.52	16.62	11.24	0.81	0.81
110	J37	9.97	9.84	13.67	10.03	0.73	0.72
110	S22	6.35	8.17	5.05	4.43	1.26	1.62
110	H20	6.31	13.72	9.93	6.65	0.64	1.38
110	H12	5.41	1.13	3.02	2.42	1.79	0.37
110	H11	4.49	4.58	5.76	4.49	0.78	0.79
110	U02	3.58	0.86	1.00	3.32	3.60	0.86
110	J35	2.62	3.36	2.84	2.34	0.92	1.18
110	H19	2.12	2.98	3.44	2.54	0.62	0.87
110	H14	1.60	4.37	7.27	3.90	0.22	1
110	U07	1.56	0.45	1.17	2.04	1.33	0.38
110	R01	1.06	0.22	0.41	1.44	2.57	0.54
110	H45	0.79	1.14	0.62	0.55	1.27	1.84
110	H16	0.73	1.24	1.52	0.86	0.48	0.82
110	H32	0.53		0.15	0.27	3.46	0
110	J36	0.53	0.74	0.20	0.12	2.58	3.63
110	P15	0.51	0.66	0.53	0.33	0.96	1.24
110	A06	0.27	1.93	0.39	0.24	0.69	4.98
110	H51	0.27	1.25	0.95	0.91	0.28	1.31
110	H18	0.27	1.00	0.75	0.33	0.36	1.34
110	H24	0.27		0.52	0.40	0.51	0
110	H21	0.26	0.25	0.62	0.19	0.42	0.40
110	H40	0.26	0.22	0.41	0.47	0.65	0.55
110	H42	0.26		0.28	0.21	0.96	0
110	H26	0.26		0.25	0.13	1.07	0
110	R11	0.26			0.08		
110	Q15	0.26			0.03		
110	L19	0.26			0.01		
110	L21	0.26			0.01		
110	H04	0.24			0.03		
110	C34		0.92	3.14	2.36	0	0.29
110	H23		0.52	0.17	0.09	0	3.04
110	H28		0.48	0.41	0.29	0	1.18
110	U08		0.26	0.12	0.06	0	2.13
110	D06		0.25	0.04	0.02	0	6.05
110	R16		0.22	0.03	0.07	0	6.84
110	H39		0.22	0.03	0.03	0	6.84
110	H48		0.22	0.15	0.01	0	1.55
110	Q16		0.22	0.08	0.06	0	2.74
110	S25		0.21	0.14	0.16	0	1.51
110	J31		0.21	0.25	0.08	0	0.84

Table 10: Daycase Rates per Hundred Thousand by Specialty and HRG - 1996/97

Specialty	HRG	Barking & Havering	Bexley & Greenwich	South London	Greater London	Barking/London Ratio	Bexley/London Ratio
120	C01	95.69	66.75	65.05	53.59	1.47	1.03
120	C24	44.88	20.56	64.05	36.43	0.70	0.32
120	C02	42.08	14.25	18.50	19.01	2.27	0.77
120	C22	6.03	15.63	24.33	14.66	0.25	0.64
120	C31	5.74	2.03	6.33	3.62	0.91	0.32
120	C14	2.84	1.46	3.38	3.85	0.84	0.43
120	J37	2.32	0.94	1.14	1.31	2.03	0.82
120	U02	2.29	0.22	0.83	1.96	2.76	0.26
120	U07	2.09	2.07	1.13	2.09	1.86	1.84
120	S22	2.05	2.90	4.56	3.52	0.45	0.63
120	C21	1.36	0.45	1.03	0.70	1.31	0.43
120	Q10	1.23	0.22	0.36	0.35	3.47	0.63
120	C32	0.74	0.25	4.16	1.81	0.18	0.06
120	C12	0.53	1.20	1.45	1.87	0.37	0.82
120	C11	0.51	0.65	0.82	0.58	0.62	0.80
120	C34	0.27	0.48	1.81	1.32	0.15	0.27
120	B07	0.26			0.05		
120	H22	0.26		0.04	0.07	6.85	0
120	P20	0.26			0.01		
120	S14	0.26			0.01		
120	C43	0.26			0.05		
120	C07	0.26	0.44	0.67	0.46	0.38	0.65
120	C17	0.26		0.13	0.11	1.95	0
120	J35	0.24	0.25	0.15	0.17	1.54	1.61
120	F06	0.24		0.27	0.27	0.87	0
120	S25		1.28	1.53	0.46	0	0.83
120	H44		0.67	0.52	0.33	0	1.28
120	Q13		0.25	0.04	0.02	0	6.05
120	C16		0.25	0.04	0.02	0	5.96
120	A34		0.22	0.03	0.01	0	6.84
120	C42		0.22	0.04	0.05	0	5.68
120	K01		0.22	0.08	0.03	0	2.75
120	P19		0.21	0.03	0.03	0	6.38

Table 10: Daycase Rates per Hundred Thousand by Specialty and HRG - 1996/97

Specialty	HRG	Barking & Havering	Bexley & Greenwich	South London	Greater London	Barking/London Ratio	Bexley/London Ratio
130	B02	162.24	79.57	165.96	134.36	0.98	0.48
130	B05	100.59	19.79	43.29	48.96	2.32	0.46
130	B03	37.49	37.63	69.17	48.78	0.54	0.54
130	B07	30.49	18.46	25.07	21.97	1.22	0.74
130	B04	29.18	2.32	8.46	11.75	3.45	0.27
130	B01	23.23	8.26	22.81	17.21	1.02	0.36
130	B06	19.25	10.67	15.91	18.03	1.21	0.67
130	B08	10.20	5.11	7.09	6.36	1.44	0.72
130	B09	6.61	4.08	6.59	5.87	1.00	0.62
130	S22	6.45	4.44	5.49	6.23	1.17	0.81
130	U07	5.04	0.98	2.38	4.97	2.12	0.41
130	S25	2.04		0.10	0.30	20.51	0
130	U02	1.52	0.87	0.98	2.41	1.55	0.89
130	B11	1.02	1.23	0.70	1.28	1.46	1.75
130	Q07	0.71	0.74	0.88	0.42	0.81	0.84
130	B12	0.26	0.49	0.68	1.28	0.37	0.72
130	J37		0.26	0.15	0.21	0	1.78
130	C02		0.25	0.04	0.03	0	6.05
130	C14		0.22	0.03	0.01	0	6.84

Table 10: Daycase Rates per Hundred Thousand by Specialty and HRG - 1996/97

Specialty	HRG	Barking & Havering	Bexley & Greenwich	South London	Greater London	Barking/London Ratio	Bexley/London Ratio
140	C14	146.29	95.55	217.67	146.35	0.67	0.44
140	C04	7.50	29.64	39.95	22.87	0.19	0.74
140	U07	2.33	0.92	3.63	3.59	0.64	0.25
140	C24	1.56	0.71	3.17	2.23	0.49	0.22
140	S22	1.53	2.58	1.68	1.03	0.91	1.53
140	C07	1.06	0.45	0.24	0.65	4.44	1.89
140	C44	1.03		0.03	0.13	31.42	0
140	C15	0.79	0.45	0.91	0.62	0.87	0.49
140	S25	0.78	0.45	0.07	0.41	11.92	6.84
140	C34	0.53	0.47	0.17	0.27	3.07	2.73
140	C17	0.53		0.03	0.14	16.17	0
140	J35	0.52	0.22	0.30	0.80	1.72	0.74
140	A24	0.27		0.04	0.03	6.50	0
140	C22	0.26		0.22	0.11	1.18	0
140	H17	0.26			0.01		
140	H22	0.26			0.01		
140	J37	0.26	0.22	0.70	1.76	0.36	0.31
140	C35	0.26		0.07	0.12	3.46	0
140	P13	0.26		0.04	0.38	6.63	0
140	P24	0.26			0.01		
140	C02		0.46	0.07	0.15	0	6.15
140	C25		0.45	0.59	0.40	0	0.76
140	B03		0.26	0.04	0.02	0	5.89
140	B05		0.25	0.11	0.16	0	2.31
140	F02		0.22	0.03	0.01	0	6.84
140	H28		0.22	0.03	0.08	0	6.84
140	H52		0.22	0.07	0.08	0	3.42
140	B08		0.22	0.04	0.01	0	5.68
140	P19		0.22	0.04	0.03	0	5.68

Table 11: Number of Daycase Places Saved 1996/97 by Specialty

Specialty	HRG	5 Lon rate applied to Barking Pop	Daycases Saved
100	J37	819	428
100	F95	89	201
100	F63	9	171
100	L39	71	114
100	F94	6	74
100	U07	12	41
100	F74	163	40
100	L43	41	30
100	F75	12	19
100	J35	66	19
100	Q10	28	17
100	H13	16	17
100	C14	12	16
100	S22	74	16
100	F73	20	15
100	H11	4	13
100	Q11	197	13
100	H17	3	12
100	J44	16	8
100	C01	23	7
100	J36	11	6
100	F34	1	6
100	C02	11	6
100	H12	0	5
100	F72	7	4
100	D05	3	4
100	J98	0	3
100	C21	4	2
100	J03	4	2
100	G22	0	2
100	H19	0	2
100	F77	0	1
100	N06	0	1
100	H14	0	1
100	Q06	0	1
100	C22	0	1
100	P21	0	1
100	C17	0	1
100	F22	0	1
100	J10	0	1
100	J08	0	1
100	U08	0	1
100	C11	1	1
100	H20	0	1
100	J11	0	1
100	C44	0	1
100	L42	1	1
100	F05	11	0
100	M02	2	0
100	L38	1	0
100	F46	1	0

Table 11: Number of Daycase Places Saved 1996/97 by Specialty

Specialty	HRG	S.Lon rate applied to Barking Pop	Daycases Saved
100	F53	7	0
100	G05	1	0
100	L34	1	0
100	B07	1	0
100	H22	1	0
100	J34	1	0
100	J02	1	0
100	Q09	2	-1
100	C24	3	-1
100	F96	3	-1
100	F42	4	-2
100	B05	12	-2
100	F36	3	-2
100	F54	41	-3
100	J33	5	-3
100	Q07	12	-3
100	C34	8	-3
100	F92	4	-3
100	J04	30	-6
100	Q14	9	-8
100	F44	11	-9
100	F93	20	-9
100	J07	33	-15
100	F37	25	-22
100	J05	105	-27
100	L21	38	-37
100	L41	109	-58
100	F16	130	-74
100	F06	262	-81
100	F35	516	-142
Daycase Places Saved			810

Table 11: Number of Daycase Places Saved 1996/97 by Specialty

Specialty	HRG	S.L.on.rate applied to Barking Pop	Daycases Saved
101	L21	1150	584
101	L30	35	279
101	L39	51	186
101	L45	90	112
101	L20	71	69
101	L19	58	61
101	L34	40	41
101	L38	3	38
101	L43	51	36
101	L35	53	32
101	U07	9	25
101	U02	7	19
101	L13	36	18
101	L24	12	11
101	L28	1	8
101	S22	27	8
101	L27	0	7
101	L18	4	6
101	F75	0	5
101	L37	1	3
101	L42	5	2
101	L44	1	1
101	L40	1	1
101	L03	0	1
101	L32	1	1
101	L33	0	1
101	F73	0	1
101	S25	2	1
101	J35	0	1
101	Q10	0	1
101	F06	1	0
101	J37	4	0
101	L29	2	0
101	L10	1	0
101	L12	14	0
101	L54	2	-1
101	L04	2	-1
101	L55	2	-1
101	L53	5	-1
101	L08	3	-2
101	L23	6	-4
101	L17	6	-4
101	L16	14	-13
101	L41	72	-55
Daycase Places Saved			1475

Table 11: Number of Daycase Places Saved 1996/97 by Specialty

Specialty	HRG	S.L on rate applied to Barking Pop	Daycases Saved
110	A07	18	36
110	H10	325	29
110	H22	39	14
110	U02	4	10
110	H12	12	9
110	S22	19	5
110	R01	2	2
110	U07	4	2
110	H32	1	1
110	J36	1	1
110	R11	0	1
110	Q15	0	1
110	L19	0	1
110	L21	0	1
110	H04	0	1
110	H45	2	1
110	H26	1	0
110	P15	2	0
110	H42	1	0
110	A06	1	0
110	H40	2	-1
110	J35	11	-1
110	H24	2	-1
110	H21	2	-1
110	H18	3	-2
110	H51	4	-3
110	H16	6	-3
110	H11	22	-5
110	H19	13	-5
110	H17	64	-13
110	H20	38	-14
110	J37	53	-15
110	H52	72	-15
110	H14	28	-22
110	H13	216	-87
Daycase Places Saved			-73

Table 11: Number of Daycase Places Saved 1996/97 by Specialty

Specialty	HRG	S.Lon.rate applied to Barking Pop	Daycases Saved
120	C01	250	124
120	C02	71	91
120	U02	3	6
120	J37	4	5
120	U07	4	4
120	Q10	1	4
120	C21	4	1
120	B07	0	1
120	P20	0	1
120	S14	0	1
120	C43	0	1
120	H22	0	1
120	C17	1	0
120	J35	1	0
120	F06	1	0
120	C11	3	-1
120	C07	3	-2
120	C14	13	-2
120	C31	24	-2
120	C12	6	-4
120	C34	7	-6
120	S22	18	-10
120	C32	16	-13
120	C22	94	-71
120	C24	246	-72
Daycase Places Saved			57

Table 11: Number of Daycase Places Saved 1996/97 by Specialty

Specialty	HRG	S.Lon.rate applied to Barking Pop	Daycases Saved
130	B05	167	226
130	B04	33	79
130	B07	96	23
130	B06	61	13
130	B08	27	13
130	U07	9	11
130	S25	0	8
130	B01	88	4
130	S22	21	4
130	U02	4	2
130	B11	3	1
130	B09	25	1
130	Q07	3	0
130	B12	3	-2
130	B02	638	-9
130	B03	266	-121
Daycase Places Saved			252

Table 11: Number of Daycase Places Saved 1996/97 by Specialty

Specialty	HRG	S.Lon.rate applied to Barking Pop	Daycases Saved
140	C44	0	4
140	C07	1	3
140	S25	0	3
140	C17	0	2
140	C34	1	1
140	H17	0	1
140	H22	0	1
140	P24	0	1
140	P13	0	1
140	A24	0	1
140	J35	1	1
140	C35	0	1
140	C22	1	0
140	S22	6	0
140	C15	4	-1
140	J37	3	-2
140	U07	14	-5
140	C24	12	-6
140	C04	154	-125
140	C14	837	-276
Daycase Places Saved			-395

Table 12

Summary information on elective episodes to 6 surgical specialties for Barking & Havering residents in 1996/7

Calculation of beddays/day case places saved if the London (South) admission rate applied at HRG/specialty level

		Elective inpatients			Daycases			Total beddays + daycases saved
		Total FCEs	Beddays saved	Beddays saved/FCE	Total daycases	Places saved	Places saved/DC	
100	General Surgery	2912	894.5	0.31	3962	810	0.20	1704.5
101	Urology	1538	1445.9	0.94	3322	1475	0.44	2920.9
110	Trauma & Orthopaedics	2165	1965.2	0.91	901	-73	-0.08	1892.2
120	ENT	2214	1571.9	0.71	838	57	0.07	1628.9
130	Ophthalmology	659	71.3	0.11	1699	252	0.15	323.3
140	Dental Surgery	501	298.1	0.60	642	-395	-0.62	-96.9

Table 13 List of HRGs for further analysis

HRG	HRG name
J37	Minor skin procedures - category 1 without complications/comorbidities
Q11	Varicose vein procedures
F95	Anus - minor procedures <70 without complications/comorbidities
L39	Penis minor open procedure <70 without complications/comorbidities
H10	Arthroscopies
H17	Soft tissue or other procedures - category 1 <70 without complications/comorbidities
H13	Hand procedures - category 1
C24	Mouth or throat procedures - category 3
C22	Nose procedures - category 3
C01	Ear procedures - category 1
C14	Mouth or throat procedures - category 2
L21	Bladder minor endoscopic procedure without complications/comorbidities
L30	Prostate or bladder neck minor endoscopic procedure (male and female)
B05	Other ophthalmic procedures - category 2

Table 14: 15 Major HRGs by specialty and operative procedure

Specialty 100 - General Surgery

ive Procedure	F95	J37	L39	Q11
H251 Fibreoptic sigmoidosc & biopsy	1			
H259 Diag fibreop sigmoidoscopy NOS	1			
H289 Diagn rigid sigmoidoscopy NOS	2			
H471 Excision of sphincter of anus	1			
H481 Excision of anal polyp	10			
H482 Excision of skin tag of anus	23			
H488 Excision of lesion of anus OS	1			
H489 Excision of lesion of anus NOS	3			
H511 Haemorrhoidectomy	3			
H523 Inj sclerosing subst haemorrh	209			
H524 Rubber band ligate haemorrhoid	53			
H532 Forced man dilat anus for pile	2			
H541 Anorectal stretch	18			
H561 Biopsy of lesion of anus	2			
H562 Lateral sphincterotomy of anus	18			
L851 Ligation long saphenous vein				342
L852 Ligation short saphenous vein				27
L853 Ligation recurrent varicose v				4
L858 Ligation varicose vein leg OS				4
L859 Ligation varicose vein leg NOS				1
L871 Stripping long saphenous vein				8
L873 Stripping varicose vein NEC				1
L874 Avulsion varicose vein of leg				67
L875 Local exc varicose vein of leg				1
N271 Excision of lesion of penis			1	
N284 Frenuloplasty of penis			1	
N302 Freeing of preputial adhesions			14	
N303 Circumcision			205	
N305 Stretching of prepuce			5	
N306 Manual reduction paraphimosis			1	
N308 Operation on prepuce OS			1	
S064 Shave excision lesion skin NEC		2		
S065 Exci skin lesion head/neck NEC		495		
S068 Excision of skin lesion OS		32		
S069 Excision of skin lesion NOS		743		
S081 Curet & caut skin lesn hd/neck		2		
S082 Curett cautery lesion skin NEC		1		
S089 Curettage lesion of skin NOS		4		
S112 Cryotherapy skin lesion NEC		1		
S151 Biopsy lesion skin hd/neck NEC		7		
S152 Biopsy of lesion of skin NEC		17		
S159 Other biopsy of skin NOS		3		
S424 Resuture of skin NEC		1		
S431 Removal skin clip head or neck		1		
S442 Removal of metal from skin NEC		1		
S455 Removal FB skin head/neck NEC		1		
S456 Removal FB from skin NEC		1		
S474 Incision of lesion of skin NEC		2		
S523 Insert therap subst subcut NEC		1		
S642 Chemical destruction nail bed		1		
S681 Total excision of nail		13		
S683 Partial excision of nail NEC		3		
S701 Avulsion of nail		54		
Total	347	1386	228	455

Table 14: 15 Major HRGs by specialty and operative procedure**Specialty 101 - Urology**

Operative Procedure		L21	L30	L39
M459	Diagnostic cystoscopy NOS	1574		
M472	Change of urethral catheter	9		
M473	Removal of urethral catheter	99		
M478	Ureth catheterisation blad OS	1		
M492	Change of suprapubic catheter	2		
M493	Removal of suprapubic catheter	2		
M494	Intro therap substance bladder	105		
M498	Other operation on bladder OS	1		
M499	Other operation on bladder NOS	10		
M581	Closed urethrotomy in female		1	
M582	Dilation outlet female bladder		148	
M702	Perineal needle biops prostate		3	
M703	Rectal needle biopsy prostate		173	
N271	Excision of lesion of penis			6
N272	Cautery lesion of penis			1
N284	Frenuloplasty of penis			5
N302	Freeing of preputial adhesions			12
N303	Circumcision			121
N304	Dorsal slit of prepuce			1
N305	Stretching of prepuce			1
N308	Operation on prepuce OS			1
N321	Biopsy of penis			2
N328	Other operation on penis OS			118
X598	Anaesthetic without surgery OS	6		
Total		1809	325	268

Table 14: 15 Major HRGs by specialty and operative procedure

Specialty 110 - Trauma & Orthopaedics

Operative Procedure		H10	H13	H17
A611	Excision lesion periph nerve			14
A651	Carpal tunnel release		157	
A652	Canal of Guyon release		2	
A671	Cubital tunnel release			1
A672	Release entrap lat cut n thigh			1
A681	Prim neurol & transp periph n			2
A688	Oth release peripheral nrve OS			1
A733	Decompression periph nerve NEC			3
T541	Division of palmar fascia		4	
T554	Rel fasciot ant comp low leg			2
T573	Repair of fascia			1
T591	Excision of ganglion of wrist		41	
T592	Excision of ganglion hand NEC		16	
T593	Excision of ganglion of knee			2
T598	Excision of ganglion OS			1
T601	Reexcision of ganglion wrist		2	
T602	Reexcision ganglion hand NEC		1	
T621	Total excision of bursa			2
T622	Excision of bursa NEC			9
T626	Exploration of bursa			1
T628	Operation on bursa OS			6
T652	Excision of lesion of tendon			7
T658	Excision of tendon OS			1
T691	Primary tenolysis			2
T723	Release constrict tendon sheath		25	
W051	Articul prosthet replace bone			1
W063	Total excision of patella			2
W064	Total excision of sesamoid NEC			1
W065	Total excision foot bone NEC			1
W066	Total excision of coccyx			2
W068	Total excision of bone OS			3
W069	Total excision of bone NOS			1
W081	Exc natural bony protuberance			1
W082	Excision of overgrowth of bone			21
W083	Excision of bony excrescence			25
W084	Excision of fragment of bone			5
W085	Partial excision of bone NEC			16
W088	Other excision of bone OS			2
W091	Excision of lesion of bone			5
W092	Curett bone lesion & graft HFQ			1
W122	Ang peri osteot & int fix NEC			1
W279	Fixation of epiphysis NOS			1
W281	Applic intern bone fixator NEC			1
W302	Adjust ext fixator of bone NEC			1
W365	Diag extract bone marrow NEC			1
W693	Partial synovectomy			2
W699	Open op synovial membrane NOS			1
W701	Open exc semilunar cartilage			1
W702	Open exc semilunar cart NEC			4
W712	Open excis intraart osteophyte			1
W718	Other open op intrart struc OS			1
W771	Stabilising rep joint capsule			12
W772	Stabilising transposit muscle			13
W775	Stabilising periartic osteotom			1

Table 14: 15 Major HRGs by specialty and operative procedure**Specialty 110 - Trauma & Orthopaedics (continued)**

Operative Procedure		H10	H13	H17
W778	Stabilising joint ops OS			2
W779	Stabilising joint ops NOS			1
W811	Excision lesion of joint NEC			1
W812	Open rem loose body from joint			1
W814	Incision of joint NEC			1
W815	Exploration of joint NEC			1
W818	Other open joint operation OS			5
W821	Endoscopic excis semilun cart	23		
W822	Endosc resect semilun cart NEC	215		
W823	Endoscop repair semilunar cart	11		
W828	Therap endoscopy semil cart OS	3		
W831	Endosc drill lesion artic cart	2		
W833	Endoscop shaving artic cart	15		
W838	Ther endoscopy artic cart OS	4		
W841	Endosc repair intraartic lig	8		
W843	Endoscop divis synovial plica	16		
W848	Therap endosc joint struct OS	52		
W851	Endosc remov loose body knee	15		
W852	Endoscop irrigation knee joint	180		
W858	Therapeutic endoscopy knee OS	23		
W861	Endos rem loose body joint NEC	2		
W868	Therap endoscopy of joint OS	2		
W871	Endoscopy & biopsy lesion knee	13		
W878	Diagnostic endoscopy knee OS	1		
W879	Diagnostic endoscopy knee NOS	166		
W881	Diag endosc & biopsy joint NEC	2		
W888	Diagnost endoscopy joint OS	1		
W889	Diagnost endoscopy joint NOS	15		
X083	Amputation phalanx of finger		1	
X084	Amputation of finger NEC		3	
Total		769	252	196

Table 14: 15 Major HRGs by specialty and operative procedure

Specialty 120 - E.N.T.

Operative Procedure		C01	C14	C22	C24
A848	Neurophysiological op OS				2
D021	Excision of lesion extern ear	23			
D072	Manual removal wax ext aud can	15			1
D073	Remove FB from ext audit canal	8			
D125	Removal/change mastoid pack	5			
D151	Insert vent tube tympanic memb	280		3	40
D152	Suction clearance middle ear	44			
D153	Incision of eardrum NEC	17			6
D159	Drainage of middle ear NOS	5			
D201	Biopsy of lesion of middle ear	1			
D202	Maintenance vent tube eardrum	9			
D203	Removal tymp membr vent tube	23			
D208	Other operation middle ear OS	2			
D282	Exam of ear under anaesthesia	13			2
E031	Submucous resect nasal septum			102	
E032	Excision lesion nasal septum			7	
E036	Septoplasty of nose NEC			194	
E038	Operation on nasal septum OS				1
E041	Submucous diathermy turbinate			2	4
E042	Excision turbinate of nose NEC			8	
E045	Biopsy lesion of turbinate				1
E048	Turbinate operation OS			1	
E049	Turbinate operation NOS				1
E051	Cauterisation of internal nose				1
E063	Removal packing fr nose cavity			1	
E081	Nasal polypectomy			85	
E084	Divis adhesions internal nose			1	
E085	Removal FB from cavity of nose				1
E088	Other op on internal nose OS			11	
E101	Biopsy of lesion of nose NEC			1	
E133	Intranasal antrostomy			11	
E136	Puncture of maxillary antrum			9	4
E138	Other maxillary antrum op OS			1	
E172	Excision lesion nasal sinus			2	
E201	Adenoidectomy				143
E242	Endos extirp lesn pharynx NEC				1
E251	Endos exam+ biopsy nasopharynx				3
E253	Diag endoscop nasopharynx NEC				4
E259	Diagnost endoscopy pharynx NOS				16
E274	Open removal FB from pharynx		1		
E275	Dilation of pharynx				1
E276	Examine pharynx under anaesth				2
E342	Mic endo resec les larynx NEC				30
E343	Micro destr lesion larynx NEC				1
E348	Microtherp endoscp op lar OS				21
E349	Microtherp endoscp op lar NOS				2
E352	Endoscop resect lesion larynx				4
E353	Endoscopic destr lesion larynx				7
E361	Endosc exam biop lesion larynx				32
E368	Diagnostic endoscopy larynx OS				9
E369	Diagnost endoscopy larynx NOS				51
E381	Injection into larynx				8
E593	Biopsy lesion of lung NEC				1
F231	Excision of lesion of tongue		1		

Table 14: 15 Major HRGs by specialty and operative procedure**Specialty 120 - E.N.T. (continued)**

Operative Procedure		C01	C14	C22	C24
F241	Biopsy of lesion of tongue		2		3
F262	Excision of frenulum of tongue		1		
F263	Incision of frenulum of tongue		7		1
F268	Other operation on tongue OS				1
F281	Excision of lesion of palate		2		
F321	Biopsy of lesion of palate		1		
F328	Other operation on palate OS				2
F329	Other operation on palate NOS				1
F341	Dissection tonsillectomy				533
F344	Other bilateral tonsillectomy				497
F345	Excision of remnant of tonsil				6
F346	Excision of lingual tonsil				1
F348	Excision of tonsil OS				4
F349	Excision of tonsil NOS				1
F362	Biopsy of lesion of tonsil				1
F381	Excis lesion of floor of mouth				1
F445	Excision of sublingual gland				1
F481	Biopsy lesion salivary gland		2		
F582	Other submandibular duct ops		1		
G183	Rig oesphagoscop dilation NEC				3
G199	Diagn rigid oesophagoscopy NOS				4
T851	Block diss cervic lymph nodes				1
T872	Exc/biop cervic lymph node NEC				1
T941	Excision of branchial cyst				3
V092	Reduction Fr. nasal bones NEC			1	
Total		445	18	440	1465

Table 14: 15 Major HRGs by specialty and operative procedure**Specialty 130 - Ophthalmology**

Operative Procedure		B05
C084	Retroocular injection orbit	1
C121	Excision of lesion of eyelid	70
C122	Cauterisation lesion of eyelid	2
C123	Cryotherapy lesion of eyelid	4
C124	Curettage of lesion of eyelid	8
C128	Extirp of lesion of eyelid OS	3
C151	Correction of ectropion	28
C152	Correction of entropion	24
C162	Lateral tarsorrhaphy	2
C191	Drainage of lesion of eyelid	1
C222	Biopsy of lesion of eyelid	5
C228	Other operation on eyelid OS	1
C268	Other op on lacrimal sac OS	1
C273	Irrigation nasolacrimal duct	3
C292	Enlargement lacrimal punctum	2
C293	Occlusion of lacrimal punctum	1
C461	Refractive keratoplasty	3
C498	Incision of cornea OS	1
C518	Other operation on cornea OS	1
C611	Laser trabeculoplasty	7
C732	Capsulotomy ant lens capsule	2
C818	Photocoagulation of retina OS	1
C821	Cautery of lesion of retina	201
C865	Fluorescein angiography of eye	35
C866	Exam of eye under anaesthetic	20
Total		427

Table 14: 15 Major HRGs by specialty and operative procedure**Specialty 140 - Oral Surgery**

Operative Procedure		C14
F021	Excision of lesion of lip	6
F062	Biopsy of lesion of lip	4
F068	Other operation on lip OS	1
F091	Surg rem impacted wisdom tooth	428
F092	Surg rem impacted tooth NEC	63
F093	Surg removal wisdom tooth NEC	53
F094	Surgical removal of tooth NEC	122
F095	Surg rem retained tooth root	9
F098	Surgical removal of tooth OS	1
F101	Full dental clearance	9
F102	Upper dental clearance	2
F103	Lower dental clearance	1
F104	Extraction multiple teeth NEC	96
F121	Apicectomy of tooth	36
F122	Root canal therapy to tooth	3
F128	Surgery on apex of tooth OS	1
F141	Insert fixed orthodon applianc	1
F143	Insert orthodont appliance NEC	1
F145	Surgical exposure of tooth	19
F181	Enucleation dental cyst of jaw	15
F188	Excision of dental lsn jaw OS	2
F203	Biopsy of lesion of gingiva	1
F231	Excision of lesion of tongue	5
F241	Biopsy of lesion of tongue	3
F262	Excision of frenulum of tongue	4
F263	Incision of frenulum of tongue	10
F265	Suture of tongue	1
F281	Excision of lesion of palate	2
F321	Biopsy of lesion of palate	2
F421	Biopsy of lesion of mouth NEC	3
F428	Other operation on mouth OS	1
F454	Excis lesion saliv gland NEC	1
F481	Biopsy lesion salivary gland	1
F512	Open extr calc submandib duct	2
X598	Anaesthetic without surgery OS	1
Total		910

Table 15: Age Breakdown for HRG L39, H10, H13

HRG L39 - Age Breakdown

Age Band	Daycases			Inpatients			Total		
	100 - Gen. Surg.	101 - Urology	Total	100 - Gen. Surg.	101 - Urology	Total	100 - Gen. Surg.	101 - Urology	Total
00-04	90	47	137	17	11	28	107	58	165
05-14	70	36	106	18	15	33	88	51	139
15-44	22	41	63	5		5	27	41	68
45-64	2	82	84	3	3	6	5	85	90
65-74	1	31	32		2	2	1	33	34
Total	185	237	422	43	31	74	228	268	496

HRG H10 - Age Breakdown

Age Band	Inpatients	Daycases	Total
05-14	11	8	19
15-44	186	217	403
45-64	121	109	230
65-74	67	17	84
75-84	27	3	30
85+	2		2
Missing	1		1
Total	415	354	769

HRG H13 - Age Breakdown

Age Band	Inpatients	Daycases	Total
00-04		1	1
05-14	3		3
15-44	22	55	77
45-64	51	60	111
65-74	22	8	30
75-84	24	5	29
85+	1		1
Total	123	129	252

Table 16: Trust Breakdown for HRG L39

HRG L39 by Trust

Age Band	Daycases			Inpatients			Total		
	100 - Gen. Surg.	101 - Urology	Total	100 - Gen. Surg.	101 - Urology	Total	100 - Gen. Surg.	101 - Urology	Total
RDF - Forest Healthcare	1	1	2		1	1	1	2	3
RG4 - Redbridge Healthcare	46	27	73	22	4	26	68	31	99
RG7 - Havering Hosp. NHST	138	208	346	18	19	37	156	227	383
RNH - Newham Healthcare		1	1	2		2	2	1	3
RNJ - The Royal Hosp. NHST			0		5	5	0	5	5
RP4 - G.O.S.H.			0		1	1	0	1	1
RQW - Princess Alexandra NHST			0	1		1	1	0	1
RRV - U.C.L. NHST			0		1	1	0	1	1
Total	185	237	422	43	31	74	228	268	496

**Table 17: Oral Surgery (140) & HRG C14 - Operative Procedure Codes
Bexley & Greenwich and South London**

Operative Procedure	Bexley And Greenwich	South London
E033 Biopsy lesion septum of nose		1
F019 Partial excision of lip NOS		2
F021 Excision of lesion of lip	5	66
F022 Destruction of lesion of lip		1
F029 Extirpation of lip lesion NOS		1
F051 Excision excess mucosa lip		11
F062 Biopsy of lesion of lip		12
F068 Other operation on lip OS	1	5
F081 Allotransplantation of tooth	1	1
F082 Autotransplantation of tooth	2	7
F083 Replantation of tooth	1	5
F084 Repositioning of tooth	1	4
F088 Implantation of tooth OS	1	3
F089 Implantation of tooth NOS	1	2
F091 Surg rem impacted wisdom tooth	429	2974
F092 Surg rem impacted tooth NEC	25	197
F093 Surg removal wisdom tooth NEC	54	964
F094 Surgical removal of tooth NEC	57	767
F095 Surg rem retained tooth root	6	74
F098 Surgical removal of tooth OS	1	7
F099 Surgical removal of tooth NOS	2	6
F101 Full dental clearance	13	66
F102 Upper dental clearance	3	16
F103 Lower dental clearance		3
F104 Extraction multiple teeth NEC	98	2079
F108 Simple extraction of tooth OS		1
F109 Simple extraction of tooth NOS	1	52
F115 Endosseous implant into jaw	4	16
F121 Apicectomy of tooth	12	125
F122 Root canal therapy to tooth		1
F128 Surgery on apex of tooth OS	1	3
F129 Surgery on apex of tooth NOS		1
F131 Full restoration tooth crown		1
F133 Restoration crown of tooth NEC		1
F139 Restoration of tooth NOS	1	4
F141 Insert fixed orthodon applananc	1	5
F143 Insert orthodont appliance NEC		3
F144 Removal orthodontic appliance		2
F145 Surgical exposure of tooth	15	76
F164 Scaling of tooth		1
F168 Other operation on tooth OS		2
F181 Enucleation dental cyst of jaw	19	103
F182 Marsupialise dental lesion jaw	1	5
F188 Excision of dental lsn jaw OS	1	11
F189 Excision of dental lsn jaw NOS		4
F203 Biopsy of lesion of gingiva	1	14
F231 Excision of lesion of tongue	2	33
F241 Biopsy of lesion of tongue	2	28
F262 Excision of frenulum of tongue	2	3
F263 Incision of frenulum of tongue	3	17
F264 Freeing of adhesions of tongue		1
F265 Suture of tongue		1
F268 Other operation on tongue OS	2	7
F281 Excision of lesion of palate	5	24

Table 17: Oral Surgery (140) & HRG C14 - Operative Procedure Codes*Continued*

Operative Procedure		Bexley And Greenwich	South London
F282	Destruction lesion of palate		2
F321	Biopsy of lesion of palate	2	12
F389	Extirpation mouth lesion NOS		1
F421	Biopsy of lesion of mouth NEC	2	34
F428	Other operation on mouth OS	1	4
F429	Other operation on mouth NOS		2
F453	Excis lesion sublingual gland	1	4
F481	Biopsy lesion salivary gland		12
F512	Open extr calc submandib duct	1	6
F562	Manip remove calc submand duct		1
F582	Other submandibular duct ops	1	2
S065	Exci skin lesion head/neck NEC		2
S433	Removal suture skin head neck		1
S604	Refashioning of scar		1
Total		782	7903

TABLE 18

Selected HRGs - savings for elective inpatients and daycases if London (S) admission rate applied

Specialty	HRG	Elective inpatients			Daycases			Total beddays + daycases saved
		Total FCEs	Beddays saved	Beddays saved/FCE	Total daycases	Places saved	Places saved/DC	
100	J37	140	151.4	1.08	1247	428	0.34	579.4
	Q11	245	141	0.58	210	13	0.06	154
	F95	57	35	0.61	290	201	0.69	236
	L39	43	21.5	0.50	185	114	0.62	135.5
101	L39	31	13.5	0.44	237	186	0.78	199.5
	L21	75	-45.9	-0.61	1734	584	0.34	538.1
	L30	11	7.8	0.71	314	279	0.89	286.8
110	H10	414	509.7	1.23	354	29	0.08	538.7
	H17	145	226.4	1.56	51	-13	-0.25	213.4
	H13	123	193.9	1.58	129	-87	-0.67	106.9
120	C24	1290	1018	0.79	174	-72	-0.41	946
	C22	417	336.4	0.81	23	-71	-3.09	265.4
	C01	65	30.6	0.47	374	124	0.33	154.6
130	B05	28	3.2	0.11	393	226	0.58	229.2
140	C14	405	143.9	0.36	837	-276	0.33	-132.1

Version 3 HRG labels and descriptions

The following tables provide a definitive list of HRG labels and descriptions. Copies of the tables can be produced by printing the relevant pages using the Adobe Acrobat files supplied with volume 1 of the Documentation Set, or produced as an ASCII file for importing into your own document or software using the 'Dump' function provided in the Version 3 Grouper Software.

Chapter A - Nervous System

A01	Intracranial Procedures Except Trauma - Category 1
A02	Intracranial Procedures Except Trauma - Category 2
A03	Intracranial Procedures Except Trauma - Category 3
A04	Intracranial Procedures Except Trauma - Category 4
A05	Intracranial Procedures for Trauma w cc
A06	Intracranial Procedures for Trauma w/o cc
A07	Intermediate Pain Procedures
A08	Percutaneous Image Controlled Pain Procedures
A09	Peripheral Nerve Disorders >69 or w cc
A10	Peripheral Nerve Disorders <70 w/o cc
A11	Neuromuscular Disorders
A12	Disorders of Balance >69 or w cc
A13	Disorders of Balance <70 w/o cc
A14	Brain Tumours or Cerebral Cysts >69 or w cc
A15	Brain Tumours or Cerebral Cysts <70 w/o cc
A16	Cerebral Degenerations >69 or w cc
A17	Cerebral Degenerations <70 w/o cc
A18	Multiple Sclerosis or other CNS Demyelinating Conditions
A19	Haemorrhagic Cerebrovascular Disorders
A20	Transient Ischaemic Attack >69 or w cc
A21	Transient Ischaemic Attack <70 w/o cc
A22	Non-Transient Stroke or Cerebrovascular Accident >69 or w cc
A23	Non-Transient Stroke or Cerebrovascular Accident <70 w/o cc
A24	Cranial Nerve Disorders
A25	Nervous System Infections
A26	Encephalopathy
A27	Headache or Migraine >69 or w cc
A28	Headache or Migraine <70 w/o cc
A29	Epilepsy >69 or w cc
A30	Epilepsy <70 w/o cc

Chapter A - Nervous System

- A31 Head Injury with Brain Injury
- A32 Head Injury without Significant Brain Injury w cc
- A33 Head Injury without Significant Brain Injury w/o cc
- A34 Miscellaneous Disorders of Nervous System
- A98 Chemotherapy with a Nervous System Primary Diagnosis
- A99 Complex Elderly with a Nervous System Primary Diagnosis

Chapter B - Eyes and Periorbita

- B01 Trabeculectomy
- B02 Phakoemulsification Cataract Extraction with Lens Implant
- B03 Other Cataract Extraction with Lens Implant
- B04 Other Ophthalmic Procedures - Category 1
- B05 Other Ophthalmic Procedures - Category 2
- B06 Other Ophthalmic Procedures - Category 3
- B07 Other Ophthalmic Procedures - Category 4
- B08 Other Ophthalmic Procedures - Category 5
- B09 Other Ophthalmic Procedures - Category 6
- B10 Major Ophthalmic Non-Surgical Admissions
- B11 Intermediate Ophthalmic Non-Surgical Admissions
- B12 Minor Ophthalmic Non-Surgical Admissions

Chapter C - Mouth, Head, Neck and Ears

- C01 Ear Procedures - Category 1
- C02 Nose Procedures - Category 1
- C04 Mouth or Throat Procedures - Category 1
- C06 Mouth, Head, Neck or Ear Diagnoses - Category 1 > 69 or w cc
- C07 Mouth, Head, Neck or Ear Diagnoses - Category 1 < 70 w/o cc
- C11 Ear Procedures - Category 2
- C12 Nose Procedures - Category 2
- C14 Mouth or Throat Procedures - Category 2
- C15 ENT Bone Procedures - Category 2
- C16 Mouth, Head, Neck or Ear Diagnoses - Category 2 > 69 or w cc
- C17 Mouth, Head, Neck or Ear Diagnoses - Category 2 < 70 w/o cc
- C21 Ear Procedures - Category 3
- C22 Nose Procedures - Category 3
- C24 Mouth or Throat Procedures - Category 3
- C25 ENT Bone Procedures - Category 3
- C26 Mouth, Head, Neck or Ear Diagnoses - Category 3 > 69 or w cc

Chapter C - Mouth, Head, Neck and Ears

- C27 Mouth, Head, Neck or Ear Diagnoses - Category 3 <70 w/o cc
- C31 Ear Procedures - Category 4
- C32 Nose Procedures - Category 4
- C34 Mouth or Throat Procedures - Category 4
- C35 ENT Bone Procedures - Category 4
- C36 Mouth, Head, Neck or Ear Diagnoses - Category 4 >69 or w cc
- C37 Mouth, Head, Neck or Ear Diagnoses - Category 4 <70 w/o cc
- C41 Ear Procedures - Category 5
- C42 Nose Procedures - Category 5
- C43 Mouth or Throat Procedures - Category 5 >69 or w cc
- C44 Mouth or Throat Procedures - Category 5 <70 w/o cc
- C45 ENT Bone Procedures - Category 5
- C54 Mouth or Throat Procedures - Category 6
- C98 Chemotherapy with a Mouth, Head, Neck or Ear Primary Diagnosis
- C99 Complex Elderly with a Mouth, Head, Neck or Ear Primary Diagnosis

Chapter D - Respiratory System

- D01 Lung Transplant
- D02 Complex Thoracic Procedures
- D03 Major Thoracic Procedures
- D04 Intermediate Thoracic Procedures w cc
- D05 Intermediate Thoracic Procedures w/o cc
- D06 Minor Thoracic Procedures
- D07 Fiberoptic Bronchoscopy
- D08 Rigid Bronchoscopy
- D09 Pulmonary Embolus - Died
- D10 Pulmonary Embolus >69 or w cc
- D11 Pulmonary Embolus <70 w/o cc
- D12 Lung Abscess-Empyema
- D13 Lobar, Atypical or Viral Pneumonia >69 or w cc
- D14 Lobar, Atypical or Viral Pneumonia <70 w/o cc
- D15 Bronchopneumonia
- D16 Bronchiectasis
- D17 Cystic Fibrosis
- D18 Pulmonary or Pleural Tuberculosis
- D19 Other Tuberculosis
- D20 Chronic Obstructive Pulmonary Disease or Bronchitis
- D21 Asthma >49 or w cc
- D22 Asthma <50 w/o cc

Chapter D - Respiratory System

- D23 Pleural Effusion or Pleurisy > 69 or w cc
- D24 Pleural Effusion or Pleurisy < 70 w/o cc
- D25 Respiratory Neoplasms
- D26 Fibrosis or Pneumoconiosis
- D27 Extrinsic Allergic Alveolitis or Pulmonary Eosinophilia
- D28 Granulomatous or Other Lung Disease
- D29 Inhalation Lung Injury or Foreign Body Aspiration
- D30 Pneumothorax
- D31 Sleep Disordered Breathing
- D32 Respiratory Failure
- D33 Other Respiratory Diagnoses > 69 or w cc
- D34 Other Respiratory Diagnoses < 70 w/o cc
- D98 Chemotherapy with a Respiratory System Primary Diagnosis
- D99 Complex Elderly with a Respiratory System Primary Diagnosis

Chapter E - Cardiac Surgery and Primary Cardiac Conditions

- E01 Heart and Lung Transplant
- E02 Heart Transplant
- E03 Cardiac Valve Procedures
- E04 Coronary Bypass
- E05 Other Cardiothoracic Procedures with Cardiopulmonary Support
- E06 Other Cardiothoracic Procedures without Cardiopulmonary Support
- E07 Pacemaker Implant for AMI, Heart Failure or Shock
- E08 Pacemaker Implant except for AMI, Heart Failure or Shock
- E09 Cardiac Pacemaker Replacement/Revision
- E10 Other Circulatory Procedures
- E11 Acute Myocardial Infarction w cc
- E12 Acute Myocardial Infarction w/o cc
- E13 Cardiac Catheterisation with Complications
- E14 Cardiac Catheterisation without Complications
- E15 Percutaneous Transluminal Coronary Angioplasty (PTCA)
- E16 Other Percutaneous Cardiac Procedures
- E17 Endocarditis
- E18 Heart Failure or Shock > 69 or w cc
- E19 Heart Failure or Shock < 70 w/o cc
- E20 Deep Vein Thrombosis > 69 or w cc
- E21 Deep Vein Thrombosis < 70 w/o cc
- E22 Coronary Atherosclerosis > 69 or w cc
- E23 Coronary Atherosclerosis < 70 w/o cc

Chapter E - Cardiac Surgery and Primary Cardiac Conditions

- E24 Hypertension >69 or w cc
- E25 Hypertension <70 w/o cc
- E26 Congenital or Valvular Disorders >69 or w cc
- E27 Congenital or Valvular Disorders <70 w/o cc
- E28 Cardiac Arrest
- E29 Arrhythmia or Conduction Disorders >69 or w cc
- E30 Arrhythmia or Conduction Disorders <70 w/o cc
- E31 Syncope or Collapse >69 or w cc
- E32 Syncope or Collapse <70 w/o cc
- E33 Angina >69 or w cc
- E34 Angina <70 w/o cc
- E35 Chest Pain >69 or w cc
- E36 Chest Pain <70 w/o cc
- E37 Other Cardiac Diagnoses
- E99 Complex Elderly with a Cardiac Primary Diagnosis

Chapter F - Digestive System

- F01 Oesophagus - Complex Procedures
- F02 Oesophagus - Very Major Procedures
- F03 Oesophagus - Major Procedures or Prostheses
- F04 Oesophagus - Therapeutic Endoscopic or Intermediate Procedures w cc
- F05 Oesophagus - Therapeutic Endoscopic or Intermediate Procedures w/o cc
- F06 Oesophagus - Diagnostic Procedures
- F07 Disorders of the Oesophagus >69 or w cc
- F08 Disorders of the Oesophagus <70 w/o cc
- F11 Stomach or Duodenum - Complex Procedures
- F12 Stomach or Duodenum - Very Major Procedures
- F13 Stomach or Duodenum - Major Procedures >49 or w cc
- F14 Stomach or Duodenum - Major Procedures <50 w/o cc
- F15 Stomach or Duodenum - Therapeutic Endoscopic or Intermediate Procedures
- F16 Stomach or Duodenum - Diagnostic Procedures
- F17 Stomach or Duodenum Disorders >69 or w cc
- F18 Stomach or Duodenum Disorders <70 w/o cc
- F21 Small Intestine - Very Major Procedures
- F22 Small Intestine - Major Procedures >49 or w cc
- F23 Small Intestine - Major Procedures <50 w/o cc
- F24 Small Intestinal Disorders (excluding IBD)
- F31 Large Intestine - Complex Procedures
- F32 Large Intestine - Very Major Procedures

Chapter F - Digestive System

- F33 Large Intestine - Major Procedures w cc
- F34 Large Intestine - Major Procedures w/o cc
- F35 Large Intestine - Endoscopic or Intermediate Procedures
- F36 Large Intestinal Disorders >69 or w cc
- F37 Large Intestinal Disorders <70 w/o cc
- F41 General Abdominal - Very Major or Major Procedures >69 or w cc
- F42 General Abdominal - Very Major or Major Procedures <70 w/o cc
- F43 General Abdominal - Endoscopic or Intermediate Procedures >69 or w cc
- F44 General Abdominal - Endoscopic or Intermediate Procedures <70 w/o cc
- F45 General Abdominal - Diagnostic Procedures
- F46 General Abdominal Disorders >69 or w cc
- F47 General Abdominal Disorders <70 w/o cc
- F48 Intestinal Infectious Disorders >69 or w cc
- F49 Intestinal Infectious Disorders <70 w/o cc
- F51 Inflammatory Bowel Disease - Complex Procedures
- F52 Inflammatory Bowel Disease - Major Procedures
- F53 Inflammatory Bowel Disease - Endoscopic or Intermediate Procedures >69 or w cc
- F54 Inflammatory Bowel Disease - Endoscopic or Intermediate Procedures <70 w/o cc
- F55 Inflammatory Bowel Disease >69 or w cc
- F56 Inflammatory Bowel Disease <70 w/o cc
- F61 Gastrointestinal Bleed - Very Major Procedures
- F62 Gastrointestinal Bleed - Major or Therapeutic Endoscopic Procedures
- F63 Gastrointestinal Bleed - Diagnostic Endoscopic or Intermediate Procedures
- F64 Gastrointestinal Bleed >69 or w cc
- F65 Gastrointestinal Bleed <70 w/o cc
- F71 Abdominal Hernia Procedures >69 or w cc
- F72 Abdominal Hernia Procedures <70 w/o cc
- F73 Inguinal Umbilical or Femoral Hernia Repairs >69 or w cc
- F74 Inguinal Umbilical or Femoral Hernia Repairs <70 w/o cc
- F75 Herniotomy Procedures
- F76 Hernia Disorders >69 or w cc
- F77 Hernia Disorders <70 w/o cc
- F81 Appendectomy Procedures >69 or w cc
- F82 Appendectomy Procedures <70 w/o cc
- F83 Appendix Disorders
- F91 Anus - Major Procedures
- F92 Anus - Intermediate Procedures >49 or w cc
- F93 Anus - Intermediate Procedures <50 w/o cc
- F94 Anus - Minor Procedures >69 or w cc

Chapter F - Digestive System

- F95 Anus - Minor Procedures <70 w/o cc
- F96 Anal Disorders
- F98 Chemotherapy with a Digestive System Primary Diagnosis
- F99 Complex Elderly with Digestive System Primary Diagnosis

Chapter G - Hepato-biliary and Pancreatic System

- G01 Liver Transplant
- G02 Liver - Complex Procedures
- G03 Liver - Very Major Procedures
- G04 Liver - Major Procedures > 69 or w cc
- G05 Liver - Major Procedures <70 w/o cc
- G06 Acute Liver Disorders
- G07 Chronic Liver Disorders > 69 or w cc
- G08 Chronic Liver Disorders <70 w/o cc
- G11 Biliary Tract - Complex Procedures
- G12 Biliary Tract - Very Major Procedures
- G13 Biliary Tract - Major Procedures > 69 or w cc
- G14 Biliary Tract - Major Procedures <70 w/o cc
- G15 Therapeutic Pancreatic or Biliary Procedures
- G16 Diagnostic Pancreatic or Biliary Procedures w cc
- G17 Diagnostic Pancreatic or Biliary Procedures w/o cc
- G18 Biliary Tract Disorders > 69 or w cc
- G19 Biliary Tract Disorders <70 w/o cc
- G20 Biliary Tract Neoplasms
- G21 Pancreas - Complex Procedures
- G22 Pancreas - Very Major Procedures
- G23 Pancreatic Disorders
- G24 Chronic Pancreatic Disease > 69
- G25 Chronic Pancreatic Disease <70
- G98 Chemotherapy with a Hepato-Biliary or Pancreatic System Primary Diagnosis
- G99 Complex Elderly with a Hepato-Biliary or Pancreatic System Primary Diagnosis

Chapter H - Musculoskeletal System

- H01 Bilateral Primary Hip Replacement
- H02 Primary Hip Replacement
- H03 Bilateral Primary Knee Replacement
- H04 Primary Knee Replacement
- H05 Complex Hip or Knee Revisions
- H06 Revisional Procedures to Hips or Knees
- H07 Primary or Revisional Shoulder, Elbow, or Ankle Replacements
- H08 Joint Replacements or Revisions, Site Unspecified
- H09 Anterior Cruciate Ligament Reconstruction
- H10 Arthroscopies
- H11 Foot Procedures - Category 1
- H12 Foot Procedures - Category 2
- H13 Hand Procedures - Category 1
- H14 Hand Procedures - Category 2
- H15 Hand Procedures - Category 3
- H16 Soft Tissue or Other Bone Procedures - Category 1 >69 or w cc
- H17 Soft Tissue or Other Bone Procedures - Category 1 <70 w/o cc
- H18 Soft Tissue or Other Bone Procedures - Category 2 >69 or w cc
- H19 Soft Tissue or Other Bone Procedures - Category 2 <70 w/o cc
- H20 Muscle, Tendon or Ligament Procedures - Category 1
- H21 Muscle, Tendon or Ligament Procedures - Category 2
- H22 Minor Procedures to the Musculoskeletal System
- H23 Soft Tissue Disorders >69 or w cc
- H24 Soft Tissue Disorders <70 w/o cc
- H25 Inflammatory Spine, Joint or Connective Tissue Disorders >69 or w cc
- H26 Inflammatory Spine, Joint or Connective Tissue Disorders <70 w/o cc
- H27 Non-Inflammatory Back, Bone, or Joint Disorders >69 or w cc
- H28 Non-Inflammatory Back, Bone, or Joint Disorders <70 w/o cc
- H29 Congenital Hip Dislocation with Open Procedures
- H30 Infections of Bones or Joints
- H31 Musculoskeletal Signs and Symptoms >69 or w cc
- H32 Musculoskeletal Signs and Symptoms <70 w/o cc
- H33 Neck of Femur Fracture >69 or w cc
- H34 Neck of Femur Fracture <70 w/o cc
- H35 Open Lower Limb Fractures or Dislocations
- H36 Closed Pelvis or Lower Limb Fractures >69 or w cc
- H37 Closed Pelvis or Lower Limb Fractures <70 w/o cc
- H38 Open Upper Limb Fractures or Dislocations
- H39 Closed Upper Limb Fractures or Dislocations >69 or w cc
- H40 Closed Upper Limb Fractures or Dislocations <70 w/o cc
- H41 Sprains, Strains, or Minor Open Wounds >69 or w cc

Chapter H - Musculoskeletal System

- H42 Sprains, Strains, or Minor Open Wounds <70 w/o cc
- H43 Major Cranial, Visceral or Blood Vessel Injury >69 or w cc
- H44 Major Cranial, Visceral or Blood Vessel Injury <70 w/o cc
- H45 Minor Fractures or Dislocations
- H46 Brachial or Lumbar Plexus Injury, or Complex Traumatic Amputations
- H47 Traumatic Amputations
- H48 Other Wounds or Injuries
- H49 Multiple Injury >69
- H50 Multiple Injury <70
- H51 Removal of Fixation Device >69 or w cc
- H52 Removal of Fixation Device <70 w/o cc
- H53 Pathological Fractures or Malignancy of Bone and Connective Tissue >69 or w cc
- H54 Pathological Fractures or Malignancy of Bone and Connective Tissue <70 w/o cc
- H98 Chemotherapy with a Musculoskeletal System Primary Diagnosis
- H99 Complex Elderly with a Musculoskeletal System Primary Diagnosis

Chapter J - Skin, Breast and Burns

- J01 Complex Breast Reconstruction using Flaps
- J02 Major Breast Surgery including Plastic Procedures >49 or w cc
- J03 Major Breast Surgery including Plastic Procedures <50 w/o cc
- J04 Intermediate Breast Surgery >49 or w cc
- J05 Intermediate Breast Surgery <50 w/o cc
- J06 Minor Breast Surgery >69 or w cc
- J07 Minor Breast Surgery <70 w/o cc
- J08 Non-Malignant Breast Disorders
- J09 Malignant Breast Disorders >69 or w cc
- J10 Malignant Breast Disorders <70 w/o cc
- J11 Lymph Dissection Procedures
- J12 Soft Tissue Procedures
- J13 Major Burn >19% TBSA without Significant Graft Procedure >69
- J14 Major Burn >19% TBSA without Significant Graft Procedure >16 <70
- J15 Major Burn >19% TBSA without Significant Graft Procedure <17
- J16 Major Burn >19% TBSA with Significant Graft Procedure >69
- J17 Major Burn >19% TBSA with Significant Graft Procedure >16 <70
- J18 Major Burn >19% TBSA with Significant Graft Procedure <17
- J19 Other Burn with Inhalation Injury
- J20 Other Burn with 1 Significant Graft Procedure >69
- J21 Other Burn with 1 Significant Graft Procedure >16 <70
- J22 Other Burn with 1 Significant Graft Procedure <17

Chapter J - Skin, Breast and Burns

- J23 Other Burn with Multiple Significant Graft Procedures > 69
- J24 Other Burn with Multiple Significant Graft Procedures > 16 < 70
- J25 Other Burn with Multiple Significant Graft Procedures < 17
- J26 Other Burn without Significant Graft Procedure > 69
- J27 Other Burn without Significant Graft Procedure > 16 < 70
- J28 Other Burn without Significant Graft Procedure < 17
- J29 Major Reconstructive Surgery
- J30 Major Skin Procedures > 49 or w cc
- J31 Major Skin Procedures < 50 w/o cc
- J32 Intermediate Skin Procedures
- J33 Minor Skin Procedures - Category 3
- J34 Minor Skin Procedures - Category 2 w cc
- J35 Minor Skin Procedures - Category 2 w/o cc
- J36 Minor Skin Procedures - Category 1 w cc
- J37 Minor Skin Procedures - Category 1 w/o cc
- J38 Skin Ulcers
- J39 Major Dermatological Conditions > 69 or w cc
- J40 Major Dermatological Conditions < 70 w/o cc
- J41 Major Skin Infections > 69 or w cc
- J42 Major Skin Infections < 70 w/o cc
- J43 Major Skin Tumours
- J44 Minor Dermatological Conditions or Benign Tumours
- J45 Minor Skin Infections
- J98 Chemotherapy with a Skin, Breast or Burn Primary Diagnosis
- J99 Complex Elderly with a Skin, Breast or Burn Primary Diagnosis

Chapter K - Endocrine and Metabolic System

- K01 Thyroid Procedures
- K02 Parathyroid Procedures
- K03 Adrenal Procedures
- K04 Anterior Pituitary Disorders
- K05 Other Endocrine Disorders > 69 or w cc
- K06 Other Endocrine Disorders < 70 w/o cc
- K07 Fluid or Electrolyte Disorders > 69 or w cc
- K08 Fluid or Electrolyte Disorders < 70 w/o cc
- K09 Disorders of Nutrition
- K10 Inborn Errors of Metabolism
- K11 Diabetes with Hypoglycaemic Emergency > 69 or w cc
- K12 Diabetes with Hypoglycaemic Emergency < 70 w/o cc

Chapter K - Endocrine and Metabolic System

- K13 Diabetes with Hyperglycaemic Emergency >69 or w cc
- K14 Diabetes with Hyperglycaemic Emergency <70 w/o cc
- K15 Diabetes and Other Hyperglycaemic Disorder >69 or w cc
- K16 Diabetes and Other Hyperglycaemic Disorder <70 w/o cc
- K17 Diabetes with Lower Limb Complications
- K98 Chemotherapy with an Endocrine or Metabolic System Primary Diagnosis
- K99 Complex Elderly with an Endocrine or Metabolic System Primary Diagnosis

Chapter L - Urinary Tract and Male Reproductive System

- L01 Kidney Transplant
- L02 Kidney Major Open Procedure >49 or w cc
- L03 Kidney Major Open Procedure <50 w/o cc
- L04 Kidney Major Endoscopic Procedure
- L05 Kidney Intermediate Endoscopic Procedure >69 or w cc
- L06 Kidney Intermediate Endoscopic Procedure <70 w/o cc
- L07 Non OR Admission for Kidney or Urinary Tract Neoplasms >69 or w cc
- L08 Non OR Admission for Kidney or Urinary Tract Neoplasms <70 w/o cc
- L09 Kidney or Urinary Tract Infections >69 or w cc
- L10 Kidney or Urinary Tract Infections <70 w/o cc
- L11 Ureter Open Procedure
- L12 Ureter Major Endoscopic Procedure
- L13 Ureter Intermediate Endoscopic Procedure
- L14 Bladder Major Open Procedures or Reconstruction
- L15 Cystectomy or Urinary Diversion excluding Reconstruction
- L16 Bladder Intermediate Open Procedure
- L17 Bladder Major Endoscopic Procedure
- L18 Bladder Intermediate Endoscopic Procedure w cc
- L19 Bladder Intermediate Endoscopic Procedure w/o cc
- L20 Bladder Minor Endoscopic Procedure w cc
- L21 Bladder Minor Endoscopic Procedure w/o cc
- L22 Bladder or Urinary Mechanical Problems >69 or w cc
- L23 Bladder or Urinary Mechanical Problems <70 w/o cc
- L24 Ureteric or Bladder Disorders
- L25 Prostate or Bladder Neck Open Procedure (Male and Female) >69 or w cc
- L26 Prostate or Bladder Neck Open Procedure (Male and Female) <70 w/o cc
- L27 Prostate Transurethral Resection Procedure >69 or w cc
- L28 Prostate Transurethral Resection Procedure <70 w/o cc
- L29 Prostate or Bladder Neck Intermediate Endoscopic Procedure (Male and Female)

Chapter L - Urinary Tract and Male Reproductive System

- L30 Prostate or Bladder Neck Minor Endoscopic Procedure (Male and Female)
- L31 Malignant Prostate Disorders
- L32 Non-Malignant Prostate Disorders
- L33 Urethra Major Open Procedure
- L34 Urethra Intermediate or Minor Procedures > 69 or w cc
- L35 Urethra Intermediate or Minor Procedures <70 w/o cc
- L36 Urethra Disorders
- L37 Penis Major or Intermediate Open Procedures
- L38 Penis Minor Open Procedure > 69 or w cc
- L39 Penis Minor Open Procedure <70 w/o cc
- L40 Penis Disorders
- L41 Vasectomy Procedures
- L42 Scrotum Testis or Vas Deferens Major Open Procedure >69 or w cc
- L43 Scrotum Testis or Vas Deferens Major Open Procedure <70 w/o cc
- L44 Scrotum Testis or Vas Deferens Disorders
- L45 Extracorporeal Lithotripsy
- L46 Renal Replacement Associated Procedures
- L47 Renal Replacement Therapy w cc
- L48 Renal Replacement Therapy w/o cc
- L49 Acute Renal Failure >69 or w cc
- L50 Acute Renal Failure <70 w/o cc
- L51 Chronic Renal Failure
- L52 Renal General Disorders >69 or w cc
- L53 Renal General Disorders <70 w/o cc
- L54 Renal Findings >69 or w cc
- L55 Renal Findings <70 w/o cc
- L98 Chemotherapy with a Urinary Tract or Male Reproductive System Primary Diagnosis
- L99 Complex Elderly with a Urinary Tract or Male Reproductive System Primary
Diagnosis

Chapter M - Female Reproductive System

- M01 Lower Genital Tract Minor Procedures
- M02 Lower Genital Tract Intermediate Procedures
- M03 Lower Genital Tract Major Procedures
- M04 Lower Genital Tract Complex Major Procedures
- M05 Upper Genital Tract Minor Procedures
- M06 Upper Genital Tract Intermediate Procedures
- M07 Upper Genital Tract Major Procedures
- M08 Upper Genital Tract Complex Major Procedures

Chapter M - Female Reproductive System

- M09 Threatened or Spontaneous Abortion
- M10 Surgical Termination of Pregnancy
- M11 Medical Termination of Pregnancy
- M12 Non-Surgical Treatment of Lower Genital Tract Disorders
- M13 Non-Surgical Treatment of Genital Prolapse or Incontinence
- M14 Non-Surgical Treatment of Fibroids, Menstrual Disorders, or Endometriosis
- M15 Non-Surgical Treatment of Ovary, Tube, or Pelvis Disorders
- M16 Non-Surgical Treatment of Gynaecological Malignancy > 69 or w cc
- M17 Non-Surgical Treatment of Gynaecological Malignancy < 70 w/o cc
- M18 Non-Surgical Treatment of Other Gynaecological Conditions
- M19 Gynaecological Radiotherapy
- M98 Chemotherapy with a Female Reproductive System Primary Diagnosis
- M99 Complex Elderly with a Female Reproductive System Primary Diagnosis

Chapter N - Obstetrics and Neonatal Care

- N01 Neonates - Died < 2 days old
- N02 Neonates with Multiple Minor Diagnoses
- N03 Neonates with one Minor Diagnosis
- N04 Neonates with Multiple Major Diagnoses
- N05 Neonates with one Major Diagnosis
- N06 Normal Delivery w cc
- N07 Normal Delivery w/o cc
- N08 Assisted Delivery w cc
- N09 Assisted Delivery w/o cc
- N10 Caesarean Section w cc
- N11 Caesarean Section w/o cc
- N12 Other Maternity Events

Chapter P - Diseases of Childhood

- P01 Asthma or Recurrent Wheeze
- P02 Cystic Fibrosis
- P03 Upper Respiratory Tract Disorders
- P04 Lower Respiratory Tract Disorders
- P05 Major Infections (including Immune Disorders)
- P06 Minor Infections (including Immune Disorders)
- P07 Neoplasms
- P08 Febrile Convulsions

Chapter P - Diseases of Childhood

- P09 Major Nervous System Disorders
- P10 Other Nervous System Disorders
- P11 Endocrine Disorders (including Diabetes)
- P12 Major Gastrointestinal or Metabolic Disorders
- P13 Other Gastrointestinal or Metabolic Disorders
- P14 Ingestion Poisoning or Allergies
- P15 Accidental Injury
- P16 Child Welfare and Protection
- P17 Behavioural Disorders
- P18 Psychiatric Disorders
- P19 Major Congenital Conditions
- P20 Other Congenital Conditions
- P21 Renal Disease
- P22 Renal Disease with Renal Failure
- P23 Blood Cell Disorders
- P24 Skin, Musculoskeletal, or Connective Tissue Disorders
- P25 Cardiac Conditions
- P98 Chemotherapy with a Disease of Childhood Primary Diagnosis

Chapter Q - Vascular System

- Q01 Emergency Aortic Surgery
- Q02 Elective Abdominal Vascular Surgery
- Q03 Lower Limb Arterial Surgery
- Q04 Bypasses to Tibial Arteries
- Q05 Extracranial or Upper Limb Arterial Surgery
- Q06 Miscellaneous Major Vascular Procedures
- Q07 Miscellaneous Intermediate or Minor Vascular Procedures
- Q08 Procedures on the Spleen
- Q09 Procedures on the Lymphatic System w cc
- Q10 Procedures on the Lymphatic System w/o cc
- Q11 Varicose Vein Procedures
- Q12 Therapeutic Endovascular Procedures
- Q13 Diagnostic Radiology - Arteries or Lymphatics w cc
- Q14 Diagnostic Radiology - Arteries or Lymphatics w/o cc
- Q15 Amputations
- Q16 Foot Procedures for Diabetes or Arterial Disease, and Procedures to Amputation Stumps
- Q17 Peripheral Vascular Disease >69 or w cc
- Q18 Peripheral Vascular Disease <70 w/o cc
- Q98 Chemotherapy with a Vascular System Primary Diagnosis
- Q99 Complex Elderly with a Vascular System Primary Diagnosis

Chapter R - Spinal Surgery and Primary Spinal Conditions

- R01 Minor Spinal Procedures
- R02 Surgery for Degenerative Spinal Disorders
- R03 Spinal Fusion or Decompression Excluding Trauma
- R04 Vertebral Column Injury with Fusion or Decompression
- R05 Vertebral Column Injury without Procedure >69 or w cc
- R06 Vertebral Column Injury without Procedure <70 w/o cc
- R07 Spinal Cord Injury with Fusion or Decompression
- R08 Spinal Cord Injury without Procedure
- R09 Revisional Spinal Procedures
- R10 Surgery for Scoliosis or Other Spinal Deformity
- R11 Spinal Cord Surgery
- R12 Cervical Spinal Disorders >69 or w cc
- R13 Cervical Spinal Disorders <70 w/o cc
- R14 Spinal Tumours
- R15 Thoracic or Lumbar Spinal Disorders >69 or w cc
- R16 Thoracic or Lumbar Spinal Disorders <70 w/o cc
- R17 Non-Traumatic Spinal Cord Disorders
- R18 Scoliosis or Other Spinal Deformity
- R98 Chemotherapy with a Spinal Primary Diagnosis
- R99 Complex Elderly with a Spinal Primary Diagnosis

Chapter S - Haematology, Infectious Diseases, Poisoning and Non-specific Groupings

- S01 Haematological Disorders with Minor Procedure
- S02 Malignant Disorders of Lymphatic or Haematological Systems w cc
- S03 Malignant Disorders of Lymphatic or Haematological Systems w/o cc
- S04 Coagulation Disorders
- S05 Red Blood Cell Disorders >69 or w cc
- S06 Red Blood Cell Disorders <70 w/o cc
- S07 Other Haematological or Splenic Disorders w cc
- S08 Other Haematological or Splenic Disorders w/o cc
- S09 Bone Marrow Graft
- S10 Disorders of Immunity with HIV/AIDS
- S11 Disorders of Immunity without HIV/AIDS
- S12 Septicaemia
- S13 Pyrexia of Unknown Origin
- S14 Other Viral Illness
- S15 Other Non-Viral Infections
- S16 Poisoning, Toxic Effects, or Overdoses
- S17 Side Effects of Drugs

Chapter S - Haematology, Infectious Diseases, Poisoning and Non-specific Groupings

- S18 Environmental Injury
- S19 Complications of Treatment
- S20 Postoperative infection
- S21 Convalescent or Other Relief Care
- S22 Planned Procedures Not Carried Out
- S23 Rehabilitation
- S24 Holiday Relief Care
- S25 Other Admissions
- S98 Chemotherapy with a Haematology, Infectious Disease, Poisoning, or Non-specific Primary Diagnosis
- S99 Complex Elderly with a Haematology, Infectious Disease, Poisoning, or Non-specific Primary Diagnosis

Chapter T - Mental Health

- T01 Senile Dementia
- T02 Schizophreniform Psychoses with Section
- T03 Schizophreniform Psychoses without Section
- T04 Mania with Section
- T05 Mania without Section
- T06 Depression with Section
- T07 Depression without Section
- T08 Presenile Dementia
- T09 Anxiety Syndromes
- T10 Alcohol or Drugs Non-Dependent Use > 16
- T11 Alcohol or Drugs Non-Dependent Use < 17
- T12 Alcohol or Drugs Dependency
- T13 Eating Disorders or Obsessive Compulsive Disorders
- T14 Acute Reactions or Personality Disorders
- T15 Childhood Non-Psychotic Disorders
- T16 Mental Retardation
- T17 Specific Learning Disabilities

Chapter U - Undefined Groups

- U01 Invalid Primary Diagnosis
- U02 Invalid Dominant Procedure
- U04 Age Outside Range 0-130
- U05 Age Conflicting with Diagnosis
- U07 Poorly Coded Primary Diagnosis
- U08 Poorly Coded Dominant Procedure
- U09 Invalid Length of Stay