

CASE STUDY

Open Access

A case of bovine raw milk contamination with *Listeria monocytogenes*

Karen Hunt^{1,3}, Niall Drummond², Mary Murphy², Francis Butler³, Jim Buckley² and Kieran Jordan^{1*}**Abstract**

During routine sampling of bulk raw milk on a dairy farm, the pathogenic bacteria *Listeria monocytogenes* was found to be a contaminant, at numbers < 100 cfu/ml. A strain with an indistinguishable pulsed-field gel electrophoresis pattern was isolated from the bulk milk two months later. Environmental swabs taken at the dairy environment were negative for the presence of *L. monocytogenes*, indicating a possible case of excretion of the *L. monocytogenes* directly into the milk. Milk samples were collected from the individual cows and analysed, resulting in the identification of *L. monocytogenes* excretion (at 280 cfu/ml) from one of the 4 mammary quarters of one dairy cow out of 180. When the infected cow was isolated from the herd, no *L. monocytogenes* was detected from the remaining herd. The pulsed-field gel electrophoresis pattern of the strain from the individual cow was indistinguishable from that originally isolated from the bulk milk. The infected cow did not show any clinical signs of disease, nor did the appearance of the milk have any physical abnormalities. Antibiotic treatment of the infected mammary quarter was found to be ineffective. This study shows that there can be risks associated with direct contamination of raw milk with *L. monocytogenes*.

Keywords: *Listeria monocytogenes*, Raw milk, Subclinical mastitis, Milk quality

Background

Listeria monocytogenes is a pathogenic bacterium that can cause Listeriosis in humans and various animal species. In humans, foodborne *L. monocytogenes* causes large outbreaks of Listeriosis, with a mortality rate of 9% to 44% [1]. In a wide variety of host animals *Listeria* infection has been confirmed in more than 40 species of domestic and wild animals including birds. The most susceptible domestic species are sheep, goats and cattle. Listeriosis manifests itself clinically in ruminants as encephalitis, neo-natal mortality (abortion) and septicaemia. The most common clinical form in cattle is encephalitis, in general, small numbers being affected (8-10% of the herd) with the animals surviving from 4-14 days. In animals, susceptibility to infection with *L. monocytogenes* has been attributed to decreased cell-mediated immunity associated with advanced pregnancy [2]. *L. monocytogenes* has the ability to invade both phagocytic and non-phagocytic cells, to survive and replicate intra cellularly, and to

transfer from cell to cell without exposure to humeral defence mechanisms.

In raw milk and the dairy environment, the source of *L. monocytogenes* contamination is mainly from poor silage and bedding [3,4]. On the farm, contamination of *L. monocytogenes* can spread from the environment to the animals and also from animal to animal [2,5-7]. Contamination of milking equipment with bovine faeces can also occur [8]. During storage of raw milk on the farm, *L. monocytogenes* can grow and multiply, even at refrigerated conditions [9].

Udder infection with *L. monocytogenes* is most commonly reported in sheep and goats [10]; *L. monocytogenes* bovine mastitis is less commonly reported where sub-clinical mastitis in cows can go undetected [11-16], where their milk remains visually unchanged, and with no clinical signs contamination can normally persist even after treatment [14]. Most cases of human listeriosis are foodborne related [17]. The occurrence of *L. monocytogenes* in raw milk was reported as 4.8%, 6%, 3.4% and 6%, respectively [6,18-20]. Raw milk can be contaminated from the environment or by direct excretion into the milk, therefore, consumption of raw milk is

* Correspondence: kieran.jordan@teagasc.ie

¹Teagasc Food Research Centre, Moorepark, Fermoy, Co. Cork, Ireland
Full list of author information is available at the end of the article

associated with increased risk factors. None of the above studies indicated the source of milk contamination, but it was most likely from the environment.

The aim of this study was to identify the source of *L. monocytogenes* that was contaminating bulk milk at farm level.

Materials and methods

Environmental swabbing of the dairy environment

Environmental samples were collected from non-milk contact sampling sites including pipes, tanks, drains, floors, and walls. Environmental samples from milk contact points were collected from bulk milk filters and from a milk spill area on the floor of the dairy beside the bulk tank. All swab samples and milk filters were collected as previously described [6].

Milk sampling

To investigate *L. monocytogenes* contamination of milk, the herd of 180 individual cows was divided into 9 groups with 20 cows in each group. A composite sample was taken aseptically, in sterile containers, from each group and analysed. Within each positive sample from the groups, each of the 20 individual cow's milk was sampled and analysed. Where milk from a cow was positive, milk from the four quarters of the mammary gland was sampled and analysed.

L. monocytogenes analysis

The presence/absence of *L. monocytogenes* in all milk and environmental samples was analysed using an AFNOR validated "One step enrichment broth" method (Oxoid FT0401). This AFNOR validated method has been shown to give equivalent results to ISO (11290-1:1997). Milk samples were enumerated for *L. monocytogenes* by direct plating of the milk onto selective agar (Brilliance™ *Listeria* Agar; Oxoid CM1080). Typical *L. monocytogenes* colonies (which are blue-green with a surrounding precipitate) were isolated and purified by re-streaking on ALOA agar (Agosti & Ottaviani *Listeria* Agar; LabM, Lancashire, UK, HAL010), followed by streaking on tryptone soy agar (TSA). Single pure isolated colonies were grown overnight in tryptone soy broth (TSB) and frozen in cryovials in a glycerol/TSB mixture at -20°C.

Milk quality analysis

Bulk milk and *L. monocytogenes* contaminated milk samples were tested for quality parameters. The pH was measured using BS770:5:1975 with an Orion pH meter model 420A. Enumeration of total bacterial counts using ISO 6610:1992 method with Milk Plate Count Agar (Oxoid CM0681), coliforms using method ISO 4831:2006 on VRBL agar (Oxoid CM0968) and *S. aureus* using

method ISO 6888-2 with Baird Parker Rabbit Plasma Fibrinogen agar (Oxoid CM0961). The fat, protein, lactose, casein and Somatic Cell Count (SCC) were measured by infrared analysis (Milkoscan 605, Foss Electric, Denmark).

Molecular characterisation of *L. monocytogenes* isolates

All purified isolates were confirmed as *L. monocytogenes* using Real-Time polymerase chain reaction (RT-PCR) [21,22]. Pulsed-Field Gel Electrophoresis (PFGE) of all *L. monocytogenes* isolates was performed with the restriction enzymes *AscI* and *ApaI*, in two separate experiments, using the standard PulseNet protocol [23]. Serotyping of the isolates was performed using a combination of antibodies and serotype-specific PCR [24].

Examination of cows

The infected cow under examination was physically examined and medically treated by a veterinary surgeon. The treatment included intra-mammary injection of 4 tubes of Sinulux, at 12 hour intervals. This was followed by a five day treatment with Tylosil and a subsequent five day treatment with Oxytetracycline. After antibiotic treatment the infected animal's milk continued to test positive for *L. monocytogenes*.

Results

Environment sampling

All environmental swabs were negative for *L. monocytogenes*, except the milk filters from the bulk tank and the floor of the dairy beside the bulk tank. The isolates obtained had indistinguishable PFGE profiles from the original milk isolate.

L. monocytogenes microbiological analysis

Once the cow that was excreting *L. monocytogenes* into the milk was identified, the milk from individual quarters was examined (Table 1). *L. monocytogenes* was excreted from only one quarter, and this quarter also had a higher Somatic Cell Count (SCC) than the other quarters, although it was still within acceptable limits. Detailed analysis of the milk was undertaken on several days (Table 2). The milk was positive for *L. monocytogenes* on all dates tested. In addition, TBC and SCC were

Table 1 Milk analysis results from the four quarters of the mammary gland, from the *Listeria* infected cow

Sample	<i>Listeria</i> Enrichment	<i>Listeria</i> cfu/ml	SCCx 10 ³ /ml
Front right	pos	280	207
Front left	neg	<10	79
Back left	neg	<10	9
Back right	neg	<10	4

Table 2 Milk analysis results from the *Listeria* infected milk and the bulk milk (without the infected cow)

Date	Milk source	Listeria Enrichment	Listeria cfu/ml	Total counts (cfu/ml)	SCCX 10 ³ /ml	Fat(%)	Protein(%)	Lactose(%)
18/07/11	Infected cow	pos	<10	ND	387	3.19	3.11	4.71
26/07/11	Infected cow	pos	20	98000	459	2.81	2.98	4.60
28/07/11	Infected cow	pos	307	16000	469	3.26	2.97	4.66
02/08/11	Infected cow	pos	50	77000	427	3.52	2.97	4.65
03/08/11	Infected cow	pos	520	140000	727	4.10	2.81	4.49
03/08/11	Infected cow	pos	520	140000	727	4.10	2.81	4.49
22/07/11	Bulk milk	neg	neg	ND	125	3.71	3.27	4.80
16/08/11	Bulk milk	neg	neg	ND	183	4.13	3.31	4.67

ND not determined.

elevated. Fat, protein and lactose concentrations were generally within accepted limits.

Milk quality

The average pH of infected bulk milk was pH 6.81 (n = 5). *L. monocytogenes* contaminated milk samples tested had enumeration results of <10 cfu/ml for *coliforms* and *S aureus*. Table 2 shows total bacteria count values for *L. monocytogenes* infected milk and the fat, protein lactose, casein and SSC results for both the infected milk and the non infected bulk milk.

L. monocytogenes characterisation

All *L. monocytogenes* strains isolated in this study had indistinguishable PFGE profiles (Figure 1) and were all serotype 1/2a.

Discussion

L. monocytogenes has been described as a “less common cause” of bovine environmental mastitis and may often be associated with the accidental introduction of the organism during intramammary infusion [25]. Mild persistent, antibiotic resistant, low grade infections have been documented in cattle and may result in decreased production from infected mammary tissue over time. In addition, *L. monocytogenes* infection and secretion may have potential public health implications for susceptible consumers [2], if raw milk is consumed. *L. monocytogenes* has been isolated from different species and from soil, plants, mud, pasture, waste water and streams. Cattle and many other animal species excrete *L. monocytogenes* in their faeces. Controls to reduce the level of contamination and infection include such measures as the pasteurisation of milk, rodent control and common practices of dairy husbandry, personal hygiene and environmental management. Animals with encephalitis or those that have aborted should be isolated and all in contact material including placenta and fetuses aseptically removed and destroyed [13].

In cases of *L. monocytogenes* contamination of milk, the most likely source of the *listeria* is from the environment post-milking. Direct excretion of *L. monocytogenes* into the milk, i.e., clinical or sub-clinical mastitis is rare.

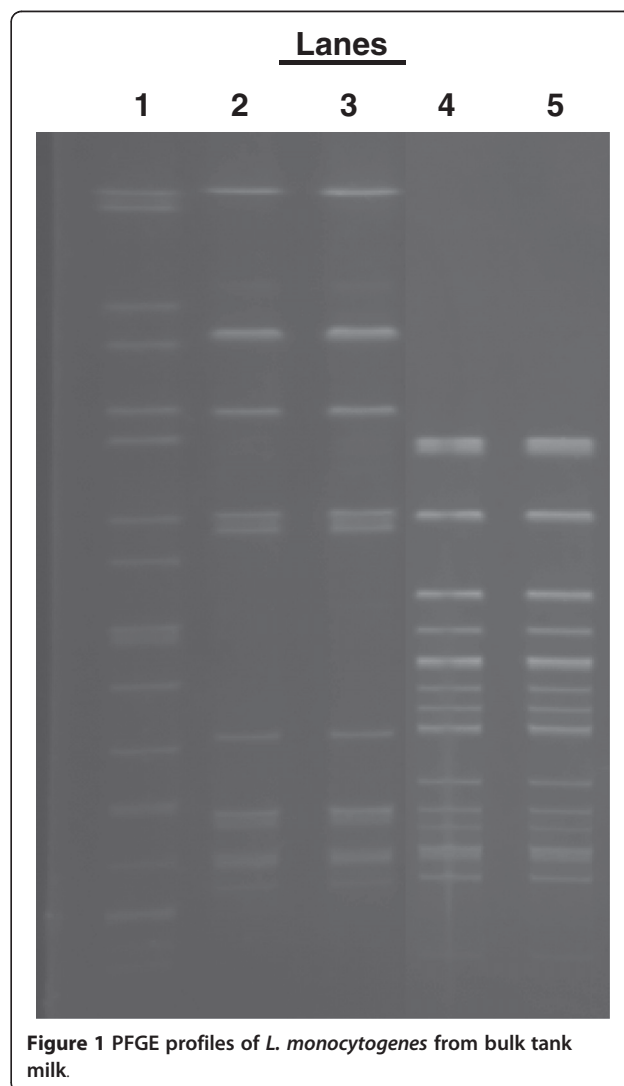


Figure 1 PFGE profiles of *L. monocytogenes* from bulk tank milk.

In this case, *L. monocytogenes* contamination of a bulk raw milk sample led to an investigation of the source of contamination. Environmental swabs from the dairy environment were negative, except for milk contact surfaces. It is possible that the contamination from the dairy floor led to contamination of the milk, but with milk contamination lasting for several months, this is unlikely. Previous studies of *L. monocytogenes* contamination of raw milk found that animal faeces, poor quality of feed and general lack of hygiene on the dairy farm are factors associated with contamination [3,26,27]. Biofilms formation has been known to cause adhesion and persistence of *L. monocytogenes* onto equipment [28]. Levels of hygiene on the farm involved in this study were visually very good, and all non-milk contact dairy environmental swabs were negative, indicating the source of contamination was direct excretion into the milk. Following a visual inspection, none of the cows in the herd had any physical signs of infection.

The *L. monocytogenes* contamination in the bulk milk was further investigated in herd milk testing. Using segregated composite bulk milk sampling (20 cows per sample), one mammary quarter from one cow infected, without any clinical or sub-clinical signs of mastitis was eventually identified [29]. This infected cow was segregated from the herd; the bulk milk was then *L. monocytogenes* negative. After the cow was segregated from the herd, the SCC results of the contaminated milk samples increased (Table 2), indicating sub clinical mastitis, although the stress of separation could also result in increased SCC counts. In dairy cattle herds with mastitis it is found that in almost all cases where *Listeria* occurred, only one quarter is infected, and 95% of cases yielded a pure culture [30], similar to the results of this study.

The quality of the infected milk was variable with regards to TBC, fat, protein and lactose levels (Table 2). When the SCC was measured initially, the values were elevated slightly in the contaminated quarter, but when diluted with the 3 non-contaminated quarters the average ~50,000 cells/ml, is well within expected limits for good quality milk. Even the contaminated quarter was acceptable at 207,000 cells/ml. When the cow was isolated from the herd and in a new environment, this could have imposed an additional stress where the SCC was raised to sub-clinical levels of >400,000 cells/ml (current EU limit as Annex III, Section IX, Chapter I,

Part III, to Regulation (EC) No 853/2004.) However, no visual defects in the milk, nor clinical signs of infection were seen in the infected cow during this study.

Testing of the infected cow and the remaining bulk milk was carried out for a further 2 months (6 months from initial identification of the problem). Over the 6 months of testing, all the strains of *L. monocytogenes*

from the infected milk were indistinguishable when characterised by PFGE (Figure 1) and serotyping, indicating that the same strain of *L. monocytogenes* was persistently present in the infected milk. The persistence of infection was also reported by Bourry 1995 [16] with sub-clinical mastitis. With sub-clinical *Listeria* mastitis, cows not showing any clinical signs go undetected where they may produce milk with normal appearance containing large numbers of pathogenic *L. monocytogenes* [15,16]. Clinical mastitis is, by definition, abnormal milk and no reference to SCC is required [31]. The presence of flakes, clots, or other gross alterations in appearance of quarter milk is evidence of clinical mastitis and is by definition, abnormal milk.

Conclusions

In this study we find bulk raw milk to be directly contaminated from a case of *L. monocytogenes* infection in a dairy cow. The SCC was slightly elevated from the infective quarter with no visual defects in the milk, or clinical signs seen of infection in the cow. This *L. monocytogenes* strain was isolated from all milk samples and by molecular characterisation, found to be a pure and persistent isolate over a 6 month period, even after antibiotic treatment.

Competing interests

The authors declare that they have no competing interests.

Acknowledgements

Karen Hunt was in receipt of a Teagasc Walsh Fellowship. The authors gratefully acknowledge funding support from the Irish Government under the Food Institutional Research Measure Irish Microbial Risk Assessment Network project, and the EU 6th Framework Programme under the project BIOTRACER.

Author details

¹Teagasc Food Research Centre, Moorepark, Fermoy, Co. Cork, Ireland. ²Cork County Council Veterinary Food Safety Laboratories, Iniscarra, Co. Cork, Ireland. ³Veterinary Sciences Centre, School of Agriculture, Food Science and Veterinary Medicine, University College Dublin, Belfield, Dublin.

Author's contributions

KH, KJ and ND carried out sampling and molecular genetic studies. KJ, MM, JB and FB planned the work and drafted the manuscript. All authors read and approved the final manuscript.

Received: 23 January 2012 Accepted: 6 July 2012

Published: 6 July 2012

References

1. Clark CG, Farber J, Pagotto F, Ciampa N, Dore K, Nadon C, Bernard K, Ng LK: *Surveillance for Listeria monocytogenes and listeriosis, 1995–2004. Epidemiol Infect* 2010, **138**:559–72.
2. Quinn PJ, Markey BK, Carter ME, Donnelly WJ, Leonard FC: *Veterinary Microbiology & Microbial Disease. Blackwell Science Ltd* 2002, **72–73**:468–469.
3. Sanaa M, Poutrel B, Menard JL, Serieys F: *Risk Factors Associated with Contamination of Raw Milk by Listeria monocytogenes in Dairy Farms. J. Dairy Sci* 1993, **76**:2891–2898.
4. Wagner M, Melzner D, Bago Z, Winter P, Egerbacher M, Schilcher F, Zangana A, Schoder D: *Outbreak of clinical listeriosis in sheep: evaluation from possible contamination routes from feed to raw produce and humans. J Vet Med B* 2005, **52**:278–83.

5. Ho AJ, Lappi VR, Wiedmann M: **Longitudinal monitoring of *Listeria monocytogenes* contamination patterns in a farmstead dairy processing facility.** *J Dairy Sci* 2007, **90**:2517–2524.
6. Fox E, Hunt K, O'Brien M, Jordan K: ***Listeria monocytogenes* in Irish Farmhouse cheese processing environments.** *Int J Food Microbiol* 2011, **145**(Suppl 1):S39–45.
7. Barrett DJ, Healy AM, Leonard FC, Doherty ML: **Prevalence of pathogens causing subclinical mastitis in 15 dairy herds in the Republic of Ireland.** *Irish Veterinary Journal* 2005, **58**:333–337.
8. Mohammed HO, Stipetic K, McDonough PL, Gonzalez RN, Nydam DV, Atwill ER: **Identification of potential on-farm sources of *Listeria monocytogenes* in herds of dairy cattle.** *Am J Vet Res* 2009, **70**:383–8.
9. Yilmaz T, Moyer B, MacDonell RE, Cordero-Coma M, Gallagher MJ: **Outbreaks associated with unpasteurized milk and soft cheese: an overview of consumer safety.** *Food Protection Trends* 2009, **29**:211–222.
10. Low JC, Donachie W: **A review of *Listeria monocytogenes* and listeriosis.** *Vet J* 1997, **153**(1):9–29.
11. Schoder D, Winter P, Kareem A, Baumgartner W, Wagner M: **A case of sporadic ovine mastitis caused by *Listeria monocytogenes* and its effect on contamination of raw milk and raw-milk cheeses produced in the on-farm dairy.** *J Dairy Res* 2003, **70**:395–401.
12. van Daelen AM, Jaartsveld FH: ***Listeria mastitis* in cattle.** *Tijdschr Diergeneeskde* 1988, **113**:380–3.
13. Gitter M, Bradley R, Blampied PH: ***Listeria monocytogenes* infection in bovine mastitis.** *Vet Rec* 1980, **107**:390–3.
14. Fedio WM, Schoonderwoerd M, Shute RH, Jackson H: **A case of bovine mastitis caused by *Listeria monocytogenes*.** *Can Vet J* 1990, **31**:773–5.
15. Winter P, Schilcher F, Bagò Z, Schoder D, Egerbacher M, Baumgartner W, Wagner M: **Clinical and Histopathological Aspects of Naturally Occurring Mastitis Caused by *Listeria monocytogenes* in Cattle and Ewes.** *J Vet Med B* 2004, **51**:176–179.
16. Bourry A, Poutrel B, Rocourt J: **Bovine mastitis caused by *Listeria monocytogenes*: characteristics of natural and experimental infections.** *J Med Microbiol* 1995, **43**:125–32.
17. Chakraborty T, Wehland J: **The host cell infected with *Listeria monocytogenes*.** In *Host response through intra cellular pathogens*. Edited by Kaufmann SHE. New York: Springer; 1997:271–290.
18. D'Amico DJ, Donnelly CW: **Microbiological quality of raw milk used for small-scale artisan cheese production in Vermont: effect of farm characteristics and practices.** *J Dairy Sci* 2010, **93**:134–47.
19. Oliver SP, Boor KJ, Murphy SC, Murinda SE: **Food safety hazards associated with consumption of raw milk.** *Foodborne Pathog Dis* 2009, **6**:793–806.
20. Rea MC, Cogan TM, Tobin S: **Incidence of pathogenic bacteria in raw milk in Ireland.** *J Appl Bacteriol* 1992, **73**:331–6.
21. Rodriguez-Lazaro D, Hernandez M, Scortti M, Esteve T, Vazquez-Boland JA, Pla M: **Quantitative detection of *Listeria monocytogenes* and *Listeria innocua* by real-time PCR: assessment of hly, iap, and lin02483 targets and AmpliFluor technology.** *Appl Environ Microbiol* 2004, **70**:1366–1377.
22. O'Brien M, Hunt K, McSweeney S, Jordan K: **Occurrence of foodborne pathogens in Irish farmhouse cheese.** *Food Microbiol* 2009, **26**:910–914.
23. Graves LM, Swaminathan B: **PulseNet standardized protocol for subtyping *Listeria monocytogenes* by macrorestriction and pulsed-field gel electrophoresis.** *Int J Food Microbiol* 2001, **65**:55–62.
24. Doumith M, Buchrieser C, Glaser P, Jacquet C, Martin P: **Differentiation of the Major *Listeria monocytogenes* Serovars by Multiplex PCR.** *J Clin Microbiol* 2004, **42**:3819–3822.
25. Menzies FD, McBride SH, McDowell SWJ, McCoy MA, McConnell W, Bell C: **Clinical and laboratory findings in cases of toxic mastitis in cows in Northern Ireland.** *Veterinary Record* 2000, **147**:123–128.
26. Nightingale KK, Fortes ED, Ho AJ, Schukken YH, Grohn YT, Wiedmann M: **Evaluation of farm management practices as risk factors for clinical listeriosis and fecal shedding of *Listeria monocytogenes* in ruminants.** *J Am Vet Med Assoc* 2005, **227**:1808–14.
27. Schoder D, Melzner D, Schmalwieser A, Zangana A, Winter P, Wagner M: **Important vectors for *Listeria monocytogenes* transmission at farm dairies manufacturing fresh sheep and goat cheese from raw milk.** *J Food Prot* 2011, **74**:919–24.
28. Latorre AA, Van Kessel JS, Karns JS, Zurakowski MJ, Pradhan AK, Boor KJ, Jayarao BM, Houser BA, Daugherty CS, Schukken YH: **Biofilm in milking equipment on a dairy farm as a potential source of bulk tank milk contamination with *Listeria monocytogenes*.** *J Dairy Sci* 2010, **93**:2792–2802.
29. Le Maréchal C, Thiery R, Vautor R, Le Loir Y: **Mastitis impact on technological properties of milk and quality of milk products - a review.** *Dairy Sci. & Technol* 2011, **91**:247–282.
30. Jensen NE, Aarestrup FM, Jensen J, Wegener HC: ***Listeria monocytogenes* in bovine mastitis. Possible implication for human health.** *Int J Food Microbiol* 1996, **32**:209–216.
31. Kitchen BJ: **Bovine mastitis: milk compositional changes and related diagnostic tests.** *J Dairy Res* 1981, **48**:167–188.

doi:10.1186/2046-0481-65-13

Cite this article as: Hunt et al.: A case of bovine raw milk contamination with *Listeria monocytogenes*. *Irish Veterinary Journal* 2012 **65**:13.

Submit your next manuscript to BioMed Central and take full advantage of:

- Convenient online submission
- Thorough peer review
- No space constraints or color figure charges
- Immediate publication on acceptance
- Inclusion in PubMed, CAS, Scopus and Google Scholar
- Research which is freely available for redistribution

Submit your manuscript at
www.biomedcentral.com/submit

