



Radiative rates and electron impact excitation rates for H-like Fe XXVI

Aggarwal, K. M., Hamada, K., Igarashi, A., Jonauskas, V., Keenan, F. P., & Nakazaki, S. (2008). Radiative rates and electron impact excitation rates for H-like Fe XXVI. *Astronomy and Astrophysics*, 484, 879-885. DOI: 10.1051/0004-6361:200809823

Published in:
Astronomy and Astrophysics

Document Version:
Publisher's PDF, also known as Version of record

Queen's University Belfast - Research Portal:
[Link to publication record in Queen's University Belfast Research Portal](#)

Publisher rights

© 2008 ESO

Credit: Radiative rates and electron impact excitation rates for H-like Fe XXVI. / Aggarwal, Kanti; Hamada, K.; Igarashi, A.; Jonauskas, Valdas; Keenan, Francis; Nakazaki, S.

In: *Astronomy and Astrophysics*, Vol. 484, 06.2008, p. 879-885. © ESO.

General rights

Copyright for the publications made accessible via the Queen's University Belfast Research Portal is retained by the author(s) and / or other copyright owners and it is a condition of accessing these publications that users recognise and abide by the legal requirements associated with these rights.

Take down policy

The Research Portal is Queen's institutional repository that provides access to Queen's research output. Every effort has been made to ensure that content in the Research Portal does not infringe any person's rights, or applicable UK laws. If you discover content in the Research Portal that you believe breaches copyright or violates any law, please contact openaccess@qub.ac.uk.

Radiative rates and electron impact excitation rates for H-like Fe XXVI[★]

K. M. Aggarwal¹, K. Hamada², A. Igarashi², V. Jonauskas³, F. P. Keenan¹, and S. Nakazaki²

¹ Astrophysics Research Centre, School of Mathematics and Physics, Queen's University Belfast, Belfast BT7 1NN, Northern Ireland, UK

e-mail: K.Aggarwal@qub.ac.uk

² Department of Applied Physics, Faculty of Engineering, University of Miyazaki, Miyazaki 889-2192, Japan

³ Vilnius University Research Institute of Theoretical Physics and Astronomy, A. Goštauto 12, 01108 Vilnius, Lithuania

Received 20 March 2008 / Accepted 7 April 2008

ABSTRACT

Aims. In this paper we report on calculations for energy levels, radiative rates, collision strengths, and effective collision strengths for transitions among the lowest 25 levels of the $n \leq 5$ configurations of H-like Fe XXVI.

Methods. The general-purpose relativistic atomic structure package (GRASP) and Dirac atomic R -matrix code (DARC) are adopted for the calculations.

Results. Radiative rates, oscillator strengths, and line strengths are reported for all electric dipole (E1), magnetic dipole (M1), electric quadrupole (E2), and magnetic quadrupole (M2) transitions among the 25 levels. Furthermore, collision strengths and effective collision strengths are reported for all the 300 transitions among the above 25 levels over a wide energy (temperature) range up to 1500 Ryd ($10^{7.7}$ K). Comparisons are made with earlier available results and the accuracy of the data is assessed.

Key words. atomic data – atomic processes

1. Introduction

This is in continuation of our work on generating atomic data (energy levels, radiative rates, collision strengths, and excitation rates) for iron ions, for which we have already reported our calculations for Fe IX (Aggarwal et al. 2006), Fe X (Aggarwal & Keenan 2004b, 2005b), Fe XI (Aggarwal & Keenan 2003a,b), Fe XIII (Aggarwal & Keenan 2004a,b), Fe XV (Aggarwal et al. 2001, 2003a), Fe XVI (Aggarwal & Keenan 2006, 2007, 2008), Fe XVII (Aggarwal et al. 2003b, 2004), Fe XVIII (Jonauskas et al. 2004), Fe XXI (Aggarwal & Keenan 1999, 2001), and Fe XXIV (McKeown et al. 2004). In this paper we report similar results for transitions in Fe XXVI.

Iron is an abundant element in solar and fusion plasmas, and its emission lines are observed over almost all ionization stages. To analyse the vast amount of observational data available from space missions such as SOHO, *Chandra* and *XMM Newton*, theoretical atomic data for Fe ions are required, because there is paucity of experimental results.

Emission lines of H-like Fe XXVI have been observed in astrophysical plasmas (Kato 1976), and have been helpful in estimating the radiative power loss in fusion reactors (Summers & McWhirter 1979). A few calculations have been performed in the past, the most notable being those of Aggarwal & Kingston (1993), Kisielius et al. (1996), and Ballance et al. (2002). Aggarwal & Kingston performed non-relativistic calculations in LS coupling for transitions among the $n \leq 5$ states. They adopted the R -matrix program of Berrington et al. (1978), and

resolved resonances in the threshold region in order to include their contribution in the determination of effective collision strengths, Υ . Since it is the *fine-structure* transitions which are observed in plasmas, their calculations were of limited application. This deficiency was removed by Kisielius et al., who performed fully relativistic calculations in jj coupling. They too resolved resonances in the threshold region, and employed the earlier version of the *Dirac atomic R-matrix code* (DARC), as implemented by Ait-Tahar et al. (1996). However, their calculations suffer from a few limitations. Firstly, their results for Υ were restricted to transitions among the $n \leq 4$ levels only, whereas transitions involving the $n = 5$ levels have been observed (Dere et al. 2001). Secondly, they did not report results for “elastic” (i.e. allowed with $\Delta n = 0$) transitions. Thirdly, the corresponding results for radiative rates were not reported. These are required, along with the excitation rates, in any modelling application. Finally, and most importantly, their calculations for collision strengths (Ω) were limited to an energy below 1000 Ryd, which is *not* sufficient for the determination of values of Υ up to $T_e = 10^{7.5}$ K, the highest temperature considered by them. As a result, their reported values of Υ decrease with increasing temperature for (almost) all transitions, and are *underestimated* by up to ~40%, particularly towards the higher end of the temperature range – see, for example, Fig. 1 of Ballance et al.

All the above noted limitations in the work of Kisielius et al. (1996) were addressed by Ballance et al. (2002), who also adopted the R -matrix approach, but in a semi-relativistic Breit-Pauli approximation. For all partial waves with angular momentum $J \leq 10$ they performed Breit-Pauli calculations employing the R -matrix code of Berrington et al. (1995), and for $11 \leq J \leq 50$ they adopted the term coupling approach.

* Table 1 is also available and Tables 2–5 are only available in electronic form at the CDS via anonymous ftp to cdsarc.u-strasbg.fr (130.79.128.5) or via <http://cdsweb.u-strasbg.fr/cgi-bin/qcat?J/A+A/484/879>

Table 1. Energy levels (in Ryd) of Fe XXVI.

Index	Configuration	Level	NIST	AS ^a	GRASP ^b	GRASP ^c	GRASP ^d	FAC ^e
1	1s	² S _{1/2}	0.00000	0.00000	0.00000	0.00000	0.00000	0.0000
2	2s	² S _{1/2}	511.00120	511.22287	510.99499	511.25775	511.00986	511.0338
3	2p	² P ^o _{1/2}	510.95974	511.21310	510.95198	511.25775	510.96906	510.9933
4	2p	² P ^o _{3/2}	512.51892	512.73395	512.51098	512.81372	512.52826	512.5526
5	3p	² P ^o _{1/2}	606.09866	606.33270	606.09088	606.39679	606.10883	606.1371
6	3s	² S _{1/2}	606.11160	606.34399	606.10384	606.39679	606.12097	606.1492
7	3d	² D _{3/2}	606.56003	606.78235	606.55231	606.85815	606.57056	606.5986
8	3p	² P ^o _{3/2}	606.56095	606.78339	606.55314	606.85815	606.57117	606.5994
9	3d	² D _{5/2}	606.71158	606.93256	606.70381	607.00928	606.72168	606.7499
10	4p	² P ^o _{1/2}	639.33370	639.56219	639.32572	639.63177	639.34406	639.3737
11	4s	² S _{1/2}	639.33918	639.57025	639.33120	639.63177	639.34918	639.3788
12	4d	² D _{3/2}	639.52821	639.75043	639.52024	639.82629	639.53870	639.5682
13	4p	² P ^o _{3/2}	639.52831	639.75232	639.52059	639.82629	639.53894	639.5685
14	4d	² D _{5/2}	639.59192	639.81378	639.58420	639.89008	639.60248	639.6321
15	4f	² F ^o _{5/2}	639.59206	639.81366	639.58408	639.89008	639.60248	639.6321
16	4f	² F ^o _{7/2}	639.62372	639.84534	639.61593	639.92188	639.63428	639.6639
17	5p	² P ^o _{1/2}	654.68953	654.91608	654.98773	654.70007	654.7303
18	5s	² S _{1/2}	654.69234	654.92236	654.98773	654.70270	654.7330
19	5p	² P ^o _{3/2}	654.78903	655.01343	655.08722	654.79974	654.8300
20	5d	² D _{3/2}	654.78903	655.01135	655.08722	654.79962	654.8298
21	5f	² F ^o _{5/2}	654.82173	655.04352	655.11993	654.83228	654.8625
22	5d	² D _{5/2}	654.82156	655.04382	655.11993	654.83228	654.8625
23	5g	² G _{7/2}	654.83802	655.05969	655.13617	654.84857	654.8788
24	5f	² F ^o _{7/2}	654.83787	655.05975	655.13617	654.84857	654.8788
25	5g	² G _{9/2}	654.84778	655.06940	655.14594	654.85834	654.8885

NIST: <http://physics.nist.gov/PhysRefData>.

^a Ballance et al. (2002);

^b Kisielius et al. (1996);

^c Coulomb energies;

^d QED corrected energies;

^e Energies calculated from the FAC code.

However, this should not seriously affect the accuracy of their calculations, because Fe XXVI is only a moderately heavy ion ($Z = 26$). This is further confirmed by a good agreement between their Υ values and those of Kisielius et al., particularly towards the lower end of the temperature range. Therefore, their results for Υ are probably the best available today. However, past experience for a number of Fe ions shows that often there are large discrepancies among various sets of calculations. This is in spite of adopting the same R -matrix approach, including configuration interaction (CI) in constructing the wavefunctions, accounting for relativistic effects (in different approximations), and resolving resonances in the threshold regions. Examples of large discrepancies are transitions in Fe X (Aggarwal & Keenan 2005b), Fe XI (Aggarwal & Keenan 2003a,b), Fe XV (Aggarwal et al. 2001, 2003a), and Fe XVI (Aggarwal & Keenan 2006, 2008). Therefore, our aim is to perform yet another calculation for Fe XXVI so that results for various atomic parameters can be rigorously compared, and their accuracy is assessed in order to apply those reliably. In addition, we note that Ballance et al. have reported radiative rates (A -values) for electric dipole (E1) transitions alone, whereas corresponding results for other types of transitions, namely electric quadrupole (E2), magnetic dipole (M1) and magnetic quadrupole (M2), are also required in the analysis of plasmas. Therefore, in this work we report A -values for all types of transitions. Finally, our approach is fully relativistic, as for the generation of wavefunctions we employ the GRASP (general-purpose relativistic atomic structure package) code of Grant et al. (1980), which has been updated by Dr. P. H. Norrington. Similarly, for the computations of Ω , and

subsequently of Υ , we adopt the Dirac atomic R -matrix code (DARC) of Norrington & Grant (private communication).

2. Energy levels

The $n \leq 5$ configurations of Fe XXVI give rise to 25 fine-structure levels, listed in Table 1. Our calculated energies obtained from the GRASP code, *with* and *without* including the QED effects, are given in this table along with those from the experimental compilations of NIST (<http://physics.nist.gov/PhysRefData>), and the earlier work of Kisielius et al. (1996) and Ballance et al. (2002). For our calculations, we have used the option of *extended average level* (EAL), in which a weighted (proportional to $2j + 1$) trace of the Hamiltonian matrix is minimized. This produces a compromise set of orbitals describing closely lying states with moderate accuracy. The inclusion of QED effects *lowers* the energies by a maximum of 0.3 Ryd ($\leq 0.06\%$). In the case of Coulomb energies, levels with same n and angular momentum J (such as $2/3$ and $5/6$) are quasi-degenerate, but split with the inclusion of QED effects (Lamb shift). As a result of this the level orderings change slightly, but we have retained the original orderings of the Coulomb energies, because these are the ones adopted in the subsequent tables. In general, the theoretical energies agree very well with the experimental ones. However, the level energies of Kisielius et al. are *slightly* lower, whereas ours are slightly higher (≤ 0.01 Ryd) in comparison to the experimental ones. Similarly, the energy levels of Ballance et al. from the AutoStructure (AS) code of

Badnell (1997) are slightly higher (by ~ 0.2 Ryd) than ours or the experimental results.

3. Radiative rates

The absorption oscillator strength (f_{ij}) and radiative rate A_{ji} (in s^{-1}) for a transition $i \rightarrow j$ are related by the following expression:

$$f_{ij} = \frac{mc}{8\pi^2 e^2} \lambda_{ji}^2 \frac{\omega_j}{\omega_i} A_{ji} = 1.49 \times 10^{-16} \lambda_{ji}^2 (\omega_j/\omega_i) A_{ji} \quad (1)$$

where m and e are the electron mass and charge, respectively, c is the velocity of light, λ_{ji} is the transition energy/wavelength in \AA , and ω_i and ω_j are the statistical weights of the lower i and upper j levels, respectively. Similarly, the oscillator strength f_{ij} (dimensionless) and the line strength S (in atomic unit, $1 \text{ a.u.} = 6.460 \times 10^{-36} \text{ cm}^2 \text{ esu}^2$) are related by the following standard equations.

For the electric dipole (E1) transitions

$$A_{ji} = \frac{2.0261 \times 10^{18}}{\omega_j \lambda_{ji}^3} S^{E1} \quad \text{and} \quad f_{ij} = \frac{303.75}{\lambda_{ji} \omega_i} S^{E1}, \quad (2)$$

for the magnetic dipole (M1) transitions

$$A_{ji} = \frac{2.6974 \times 10^{13}}{\omega_j \lambda_{ji}^3} S^{M1} \quad \text{and} \quad f_{ij} = \frac{4.044 \times 10^{-3}}{\lambda_{ji} \omega_i} S^{M1}, \quad (3)$$

for the electric quadrupole (E2) transitions

$$A_{ji} = \frac{1.1199 \times 10^{18}}{\omega_j \lambda_{ji}^5} S^{E2} \quad \text{and} \quad f_{ij} = \frac{167.89}{\lambda_{ji}^3 \omega_i} S^{E2}, \quad (4)$$

and for the magnetic quadrupole (M2) transitions

$$A_{ji} = \frac{1.4910 \times 10^{13}}{\omega_j \lambda_{ji}^5} S^{M2} \quad \text{and} \quad f_{ij} = \frac{2.236 \times 10^{-3}}{\lambda_{ji}^3 \omega_i} S^{M2}. \quad (5)$$

In Table 2 we present transition energies (ΔE_{ij} in \AA), radiative rates (A_{ji} in s^{-1}), oscillator strengths (f_{ij} , dimensionless), and line strengths (S in a.u.), in length form only, for all 92 electric dipole (E1) and 107 electric quadrupole (E2) transitions among the 25 levels of Fe XXVI. The indices used to represent the lower and upper levels of a transition have already been defined in Table 1. Similar results for 86 magnetic dipole (M1) and 103 magnetic quadrupole (M2) transitions are listed in Table 3. These results not only cover a wider range of transitions among larger number of levels than hitherto available in the literature, but are also for *all* possible transitions among the above four types.

The only other results available in the literature with which to compare are those of Ballance et al. (2002) for the E1 transitions. They have not reported the A -values in their paper (due to conciseness), but have posted their full results on their website at http://www-cfadc.phy.ornl.gov/data_and_codes/. In general, the two sets of A -values agree closely (better than 20%), but for some (not all) weaker transitions ($f \leq 0.001$), such as 1–17 and 4–18, the differences are larger. These discrepancies arise mainly due to the different treatment of relativistic effects in the adopted programs.

4. Collision strengths

For the computations of collision strengths, we have employed the DARC program, which includes the relativistic effects in a systematic way, in both the target description and the scattering model. It is based on the jj coupling scheme, and uses the Dirac-Coulomb Hamiltonian in the R -matrix approach. However, because of the inclusion of fine-structure in the definition of channel coupling, the matrix size of the Hamiltonian increases substantially. The R -matrix radius has been adopted to be 4.0 au, and 71 continuum orbitals have been included for each channel angular momentum for the expansion of the wavefunction. This allows us to compute Ω up to an energy of 1600 Ryd. The maximum number of channels for a partial wave is 110, and the corresponding size of the Hamiltonian matrix is 7848. In order to obtain convergence of Ω for all transitions and at all energies, we have included all partial waves with angular momentum $J \leq 60$, although a higher range would have been preferable for the convergence of allowed transitions, in particular those with $\Delta n = 0$. However, to account for the inclusion of higher neglected partial waves, we have included a top-up, based on the Coulomb-Bethe approximation for allowed transitions and geometric series for forbidden transitions.

In Figs. 1a–3a we show the variation of Ω with angular momentum J at three energies of 700, 800 and 900 Ryd, and for three transitions, namely 2–3 ($2s^2 S_{1/2} - 2p^2 P_{1/2}^\circ$), 2–5 ($2s^2 S_{1/2} - 3p^2 P_{1/2}^\circ$) and 6–7 ($3s^2 S_{1/2} - 3d^2 D_{3/2}$), which are “elastic” (i.e. allowed with $\Delta n = 0$), allowed ($\Delta n \neq 0$), and forbidden, respectively. Similar results at higher energies of 1100, 1300 and 1500 Ryd are shown in Figs. 1b–3b. For the forbidden and allowed transitions shown in Figs. 2 and 3, the values of Ω have fully converged at all energies, including the highest energy of our calculations. However, for the “elastic” transitions our range of partial waves is not sufficient for the convergence of Ω , as shown in Fig. 1. For such transitions a top-up from the Coulomb-Bethe approximation is quite significant.

In Table 4 we present our results of Ω for all transitions over a wider energy range ($700 \leq E \leq 1500$ Ryd), but above thresholds. The indices adopted to represent a transition are already given in Table 1. These results for Ω are not directly applicable in any modelling work, but are very useful in assessing the accuracy of a calculation. The only other results available in the literature with which to compare are from our earlier calculations in LS coupling (Aggarwal & Kingston 1993). Those results for Ω are confined to energies below 860 Ryd. However, a comparison of those results with the present ones shows excellent agreement (within 10%) for all transitions, including those whose Ω values are very small ($\sim 10^{-8}$), such as the $1s^2 S - 5g^2 G$ transition. The only *exception*, for which the present results are lower (by 30%), is the $4f^2 F^\circ - 5f^2 F^\circ$ forbidden transition. This excellent agreement between the earlier non-relativistic and the present relativistic calculations indicates that the relativistic effects for Ω in Fe XXVI are not too important, although their importance in accurately determining the energy levels and radiative rates is clear, especially when we compare the energy levels in the present Table 1 with those of Aggarwal & Kingston.

In the absence of any other results for collision strengths for fine-structure transitions, we have performed another calculation using the *Flexible Atomic Code* (FAC) of Gu (2003), which is available from the website <http://kipac-tree.stanford.edu/fac>. This is also a fully relativistic code which provides a variety of atomic parameters, and yields results comparable to GRASP and DARC, particularly for highly ionized elements and at

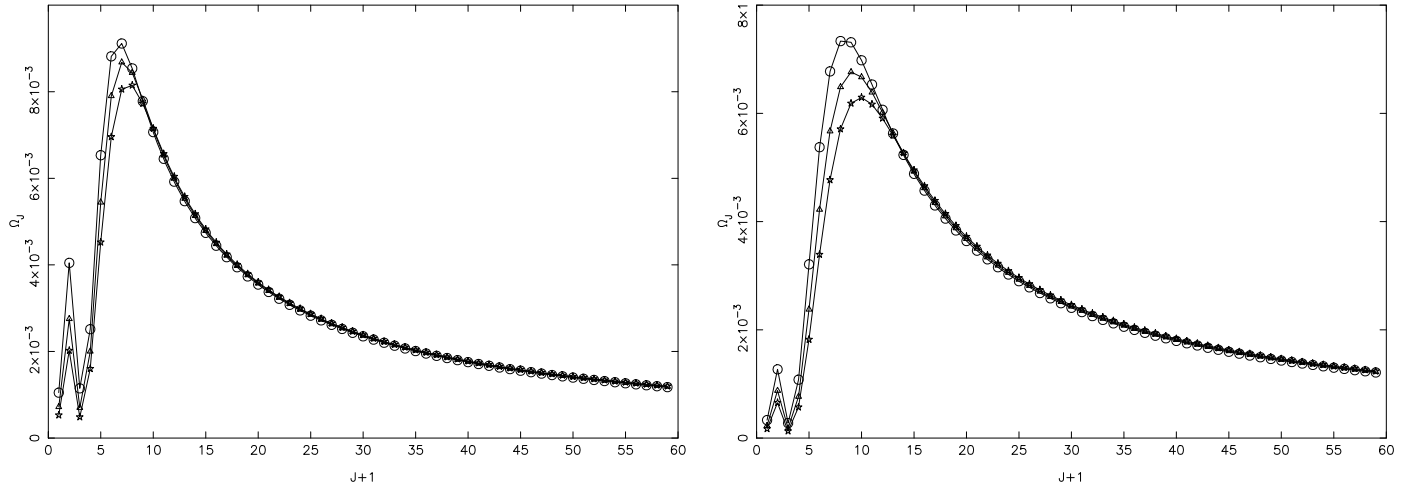


Fig. 1. Partial collision strengths for the $2s\ ^2S_{1/2}-2p\ ^2P_0$ (2–3) transition of Fe xxvi, at three energies of: (*left panel*) 700 Ryd (circles), 800 Ryd (triangles), and 900 Ryd (stars), (*right panel*) 1100 Ryd (circles), 1300 Ryd (triangles), and 1500 Ryd (stars).

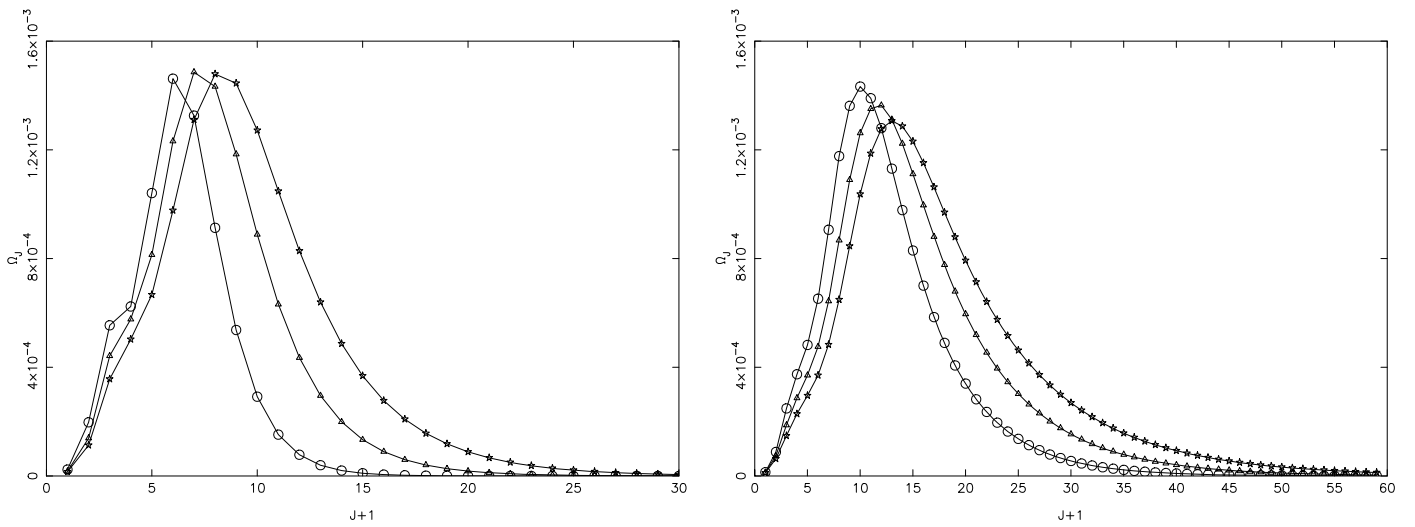


Fig. 2. Partial collision strengths for the $2s\ ^2S_{1/2}-3p\ ^2P_0$ (2–5) transition of Fe xxvi, at three energies of: (*left panel*) 700 Ryd (circles), 800 Ryd (triangles), and 900 Ryd (stars), (*right panel*) 1100 Ryd (circles), 1300 Ryd (triangles), and 1500 Ryd (stars).

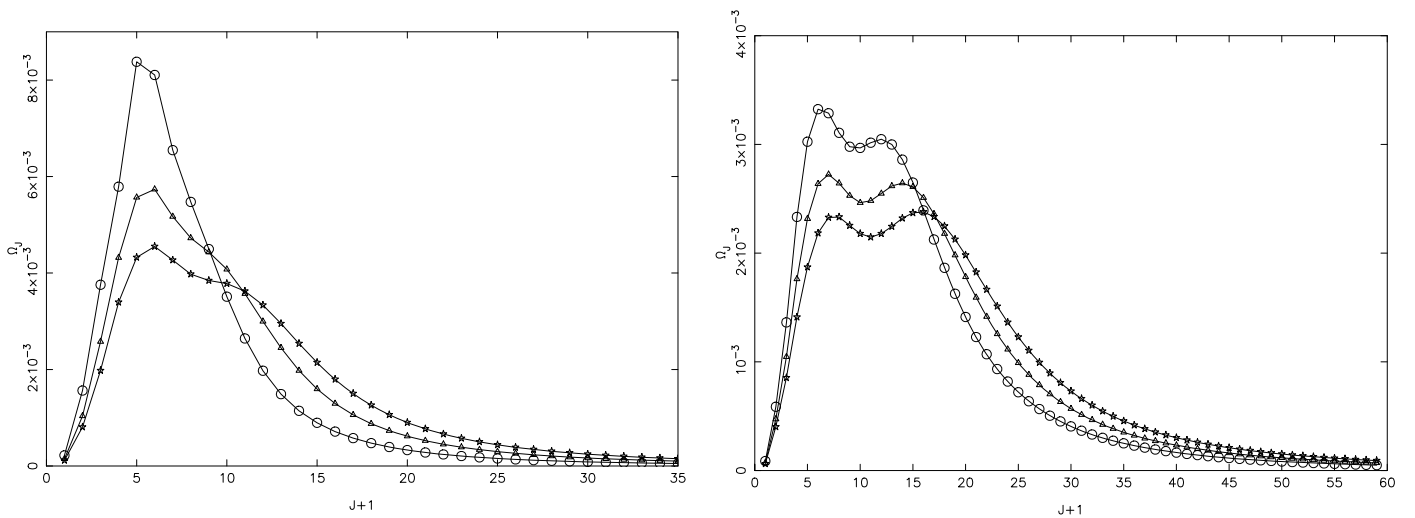


Fig. 3. Partial collision strengths for the $3s\ ^2S_{1/2}-3d\ ^2D_{3/2}$ (6–7) transition of Fe xxvi, at three energies of: (*left panel*) 700 Ryd (circles), 800 Ryd (triangles), and 900 Ryd (stars), (*right panel*) 1100 Ryd (circles), 1300 Ryd (triangles), and 1500 Ryd (stars).

higher energies. Thus results from FAC are helpful in assessing the accuracy of atomic parameters.

In Table 1 we have also included the energy levels obtained from the FAC code, which are comparable with the other calculations listed in this table, but are slightly higher (by ~ 0.04 Ryd) than the experimental ones. The A -values obtained from this code are also comparable with our calculations from GRASP for a majority of the E1 transitions. Similarly, the values of Ω calculated from the FAC code agree very well (within 10%) with our corresponding results from DARC for (almost) all transitions, including the weaker ones, such as: 1–15 ($1s^2S_{1/2}$ – $4f^2F_{5/2}^o$), 1–23 ($1s^2S_{1/2}$ – $5g^2G_{7/2}$) and 1–25 ($1s^2S_{1/2}$ – $5g^2G_{9/2}$). However, there are four transitions, namely 14–15 ($4d^2D_{5/2}$ – $4f^2F_{5/2}^o$), 19–20 ($5p^2P_{3/2}^o$ – $5d^2D_{3/2}$), 21–22 ($5f^2F_{5/2}^o$ – $5d^2D_{5/2}$), and 23–24 ($5g^2G_{7/2}$ – $5f^2F_{7/2}^o$), for which the differences between the FAC and DARC calculations are significant. The reason for the large differences becomes apparent when we have a closer look at the energy levels in Table 1. For the 14–15, 21–22 and 23–24 transitions, the energy differences (ΔE) are zero in our GRASP and FAC calculations, and are very small for the 19–20 transition. Transitions such as the above ones are “elastic”, i.e. allowed with $\Delta n = 0$ and $\Delta E \sim 0$, and converge very slowly with partial waves, as demonstrated earlier by Igarashi et al. (2003). Since both DARC and FAC codes include the contribution of higher neglected partial waves from the Coulomb-Bethe formulation of Burgess et al. (1970), which is highly sensitive to the adopted ΔE , we obtain differing values of Ω . Therefore, in order to resolve the differences between FAC and DARC calculations, and to determine the values of Ω as accurately as possible, we have performed yet another calculation using a combination of the close-coupling (CC) and Coulomb-Born (CB) programs of Igarashi et al. (2003, 2005). These calculations are similar to those performed recently for elastic transitions in Al XIII (Aggarwal et al. 2008), and for which we have adopted the energy levels of NIST.

In Fig. 4 we compare the Ω values from FAC and CC+CB programs for three transitions, namely 14–15 ($4d^2D_{5/2}$ – $4f^2F_{5/2}^o$), 21–22 ($5f^2F_{5/2}^o$ – $5d^2D_{5/2}$), and 23–24 ($5g^2G_{7/2}$ – $5f^2F_{7/2}^o$). Apart from the lowest common energy (~ 700 Ryd), the Ω values from FAC are overestimated by up to $\sim 40\%$, for the reasons explained above. Therefore, for the 26 elastic transitions we have adopted the values of Ω from our CC+CB calculations, and from the DARC code for the other remaining 274 transitions.

Since we have adopted a wide range of partial waves in order to obtain the convergence of Ω values for the forbidden as well as the allowed transitions, including the elastic ones, we estimate our results for Ω listed in Table 4 are accurate to $\sim 15\%$. This estimate is based on a variety of comparisons made among the different calculations.

5. Effective collision strengths

Effective collision strengths Υ are obtained after integrating Ω over a Maxwellian distribution of electron velocities, i.e.

$$\Upsilon(T_e) = \int_0^\infty \Omega(E) \exp(-E_j/kT_e) d(E_j/kT_e) \quad (6)$$

where E_j is the incident energy of the electron with respect to the final state of the transition, k is Boltzmann’s constant, and T_e is the electron temperature in K. Once the value of Υ is known for a transition, the corresponding value of the excitation $q(i, j)$

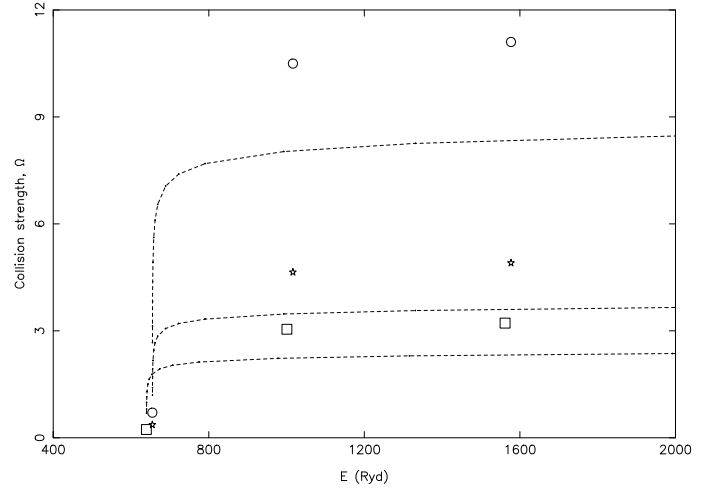


Fig. 4. Comparison of collision strengths for the 14–15 ($4d^2D_{5/2}$ – $4f^2F_{5/2}^o$), 21–22 ($5f^2F_{5/2}^o$ – $5d^2D_{5/2}$), and 23–24 ($5g^2G_{7/2}$ – $5f^2F_{7/2}^o$) transitions of Fe XXVI. Broken curves are from the CC+CB programs, and the Ω from FAC are shown as, squares: 14–15, circles: 21–22 and stars: 23–24 transition.

and de-excitation $q(j, i)$ rate coefficients can be easily obtained from the following simple relations:

$$q(i, j) = \frac{8.63 \times 10^{-6}}{\omega_i T_e^{1/2}} \Upsilon \exp(-E_{ij}/kT_e) \quad \text{cm}^3 \text{s}^{-1} \quad (7)$$

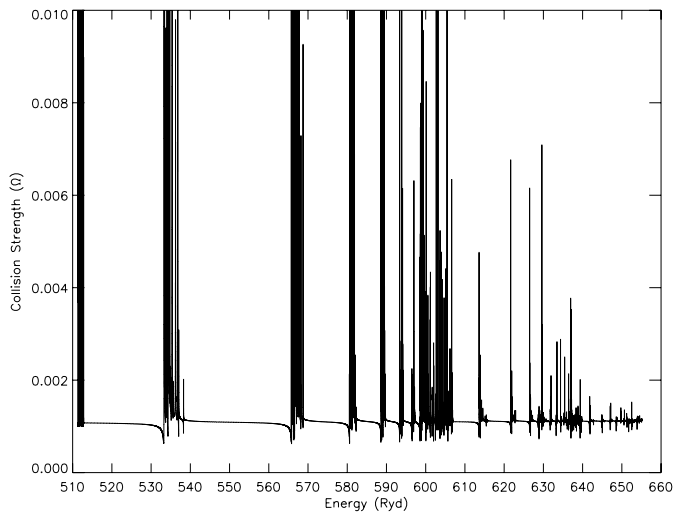
and

$$q(j, i) = \frac{8.63 \times 10^{-6}}{\omega_j T_e^{1/2}} \Upsilon \quad \text{cm}^3 \text{s}^{-1}, \quad (8)$$

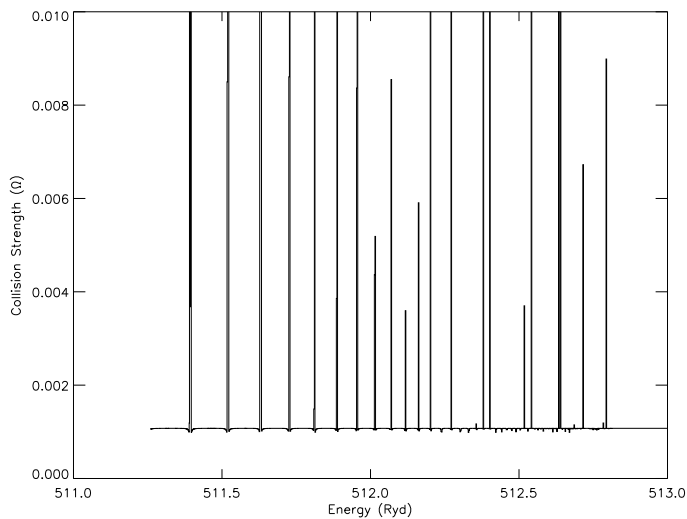
where ω_i and ω_j are the statistical weights of the initial (i) and final (j) states, respectively, and E_{ij} is the transition energy.

Since the threshold energy region is dominated by numerous resonances, Ω have been computed at a large number of energies in order to delineate these resonances. We have performed our calculations of Ω at ~ 18400 energies in the threshold region. Close to thresholds (~ 0.1 Ryd above a threshold) the energy mesh is 0.001 Ryd, and away from thresholds is 0.002 Ryd. Thus care has been taken to include as many resonances as possible, and with as fine a resolution as is computationally feasible. However, the energy gap between the $n = 2$ and 3 levels is very wide, i.e. ~ 94 Ryd – see Table 1. Therefore, in this energy region the mesh has been gradually increased to 0.01 Ryd. The density and importance of resonances can be appreciated from Figs. 5–7 in which we show our Ω values in the thresholds region for the 1–2 ($1s^2S_{1/2}$ – $2s^2S_{1/2}$), 1–3 ($1s^2S_{1/2}$ – $2p^2P_{1/2}^o$) and 2–3 ($2s^2S_{1/2}$ – $2p^2P_{1/2}^o$) transitions, respectively. Since for all of these (as well as other) transitions, near-threshold resonances are very important, Ω values for the 1–2 transition are shown in Figs. 5a,b in wider (510–650 Ryd) and a narrow (511–513 Ryd) energy ranges. These near-threshold resonances enhance the Υ values, particularly at lower temperatures.

Our calculated values of Υ are listed in Table 5 over a wide temperature range of $5.6 \leq \log T_e \leq 7.7$ K. A comparison with the similar results of Ballance et al. (2002) shows a satisfactory agreement for a majority of transitions, including the elastic ones, although 22 transitions (7%) differ by over 20%, mainly towards the lower end of the temperature range. However for some transitions, such as 1–11, 1–18, 2–18, and 3–6, the two sets of Υ values differ over the entire temperature range, and for



(a)



(b)

Fig. 5. Collision strengths for the $1s\ 2S_{1/2}-2s\ 2S_{1/2}$ (1-2) transition of Fe XXVI.

four transitions, namely 3-6 ($2p\ 2P_{1/2}^{\circ}-3s\ 2S_{1/2}$), 4-6 ($2p\ 2P_{3/2}^{\circ}-3s\ 2S_{1/2}$), 20-24 ($5d\ 2D_{3/2}-5f\ 2F_{7/2}^{\circ}$), and 21-25 ($5f\ 2F_{5/2}^{\circ}-5g\ 2G_{9/2}$), the differences are up to 80%. For the 3-6 and 4-6 (allowed) transitions our values of Υ are higher whereas for the (forbidden) 20-24 and 21-25 the Υ values of Ballance et al. are higher. However, for the 3-6 and 4-6 transitions there is no discrepancy between our A -values and those of Ballance et al. Similarly, there is no disagreement in the Ω values between the DARC and FAC calculations. Therefore, the only source of differences for the Υ values is the presence (or absence) of resonances. Although both 3-6 and 4-6 are allowed transitions, both show the presence of near-threshold resonances, as illustrated in Fig. 8 for the 3-6 transition. It is possible that the calculations of Ballance et al. may not show such near-threshold resonances, as a result of which their values of Υ become lower particularly at the lower temperatures.

The two sets of calculations by us and Ballance et al. are quite similar, as both adopt the R -matrix approach, include relativistic effects in the construction of wavefunctions as well as in the scattering process, include a wide range of partial waves to obtain converged Ω , include a wide range of energy in order to

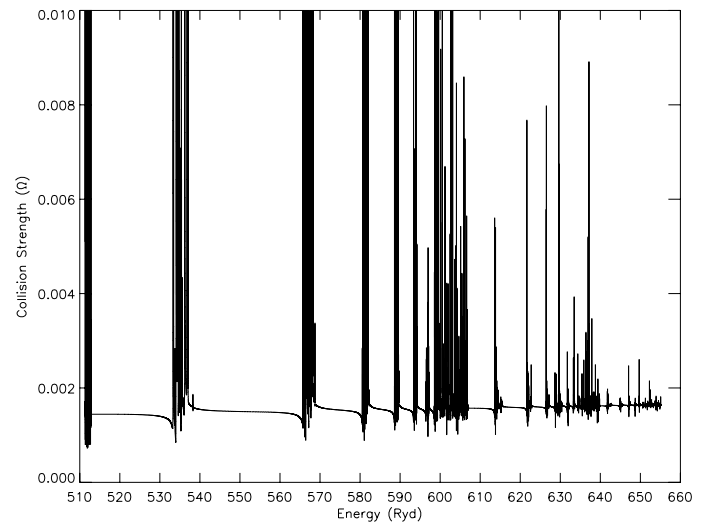


Fig. 6. Collision strengths for the $1s\ 2S_{1/2}-2p\ 2P_{1/2}^{\circ}$ (1-3) transition of Fe XXVI.

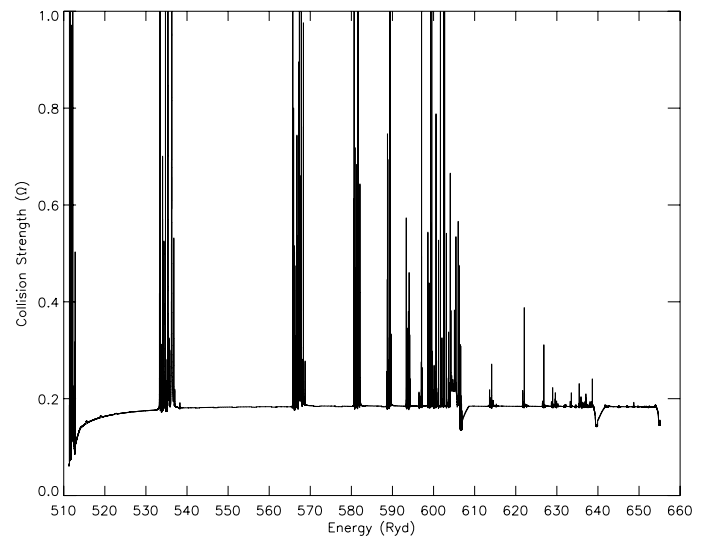


Fig. 7. Collision strengths for the $2s\ 2S_{1/2}-2p\ 2P_{1/2}^{\circ}$ (2-3) transition of Fe XXVI.

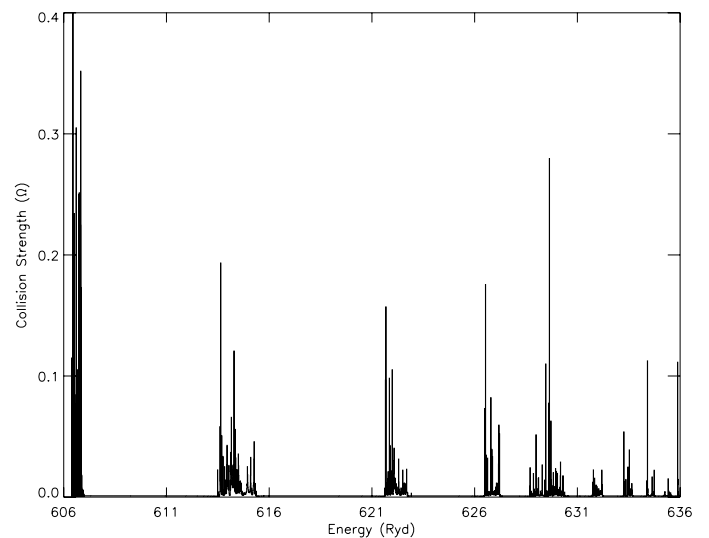


Fig. 8. Collision strengths for the $2p\ 2P_{1/2}^{\circ}-3s\ 2S_{1/2}$ (3-6) transition of Fe XXVI.

determine Υ values up to high temperatures, and finally include the contribution of resonances in order to improve upon the accuracy of the results for Υ . However, there are also some differences. Firstly, our calculations are in the jj coupling scheme (in comparison to their LSJ approach), which particularly affects the accuracy of transitions within the levels of a degenerate state. Secondly, we have adopted a single program to calculate the contribution of all partial waves with $J \leq 60$, whereas they have adopted different approaches for $J \leq 10$ and $J > 10$. Thirdly, our range of partial waves is wider ($J \leq 60$ in comparison to their $J \leq 50$), which affects the accuracy of Ω values particularly at higher energies. Finally, a comparison of their Figs. 2–4 with our Figs. 5–7 indicates that our energy mesh for resolving resonances is finer. This affects the accuracy of the values of Υ at almost all temperatures, because the resonances are spread (for some transitions) over the entire range of the threshold region of over 140 Ryd. Therefore, taking into account the above noted differences between the two sets of calculations, an agreement within 20% for a majority of transitions between the corresponding Υ values is highly satisfactory.

6. Conclusions

In the present work, results for energy levels, radiative rates, collision strengths, and effective collision strengths for transitions among the lowest 25 levels of Fe XXVI have been presented for *all* transitions. Additionally, results for radiative rates have been presented for four types of transitions, namely E1, E2, M1 and M2. A complete set of present results are likely to be useful for modelling of a variety of plasmas.

Additionally, our calculations have been performed in the jj coupling scheme, CI and relativistic effects have been included while generating wavefunctions, and a wide range of partial waves has been adopted in order to achieve convergence in Ω values for a majority of transitions. Furthermore, resonances have been resolved in a fine energy mesh in order to improve the accuracy of the derived values of Υ . Similarly, Ω have been computed over a wide energy range up to 1600 Ryd in order to determine values of Υ up to a temperature of $10^{7.7}$ K. Based on comparisons made with earlier available data for several atomic parameters, our energy levels are assessed to be accurate to $\sim 0.1\%$, whereas the accuracy of other parameters is probably better than 15%.

A comparison of our results for effective collision strengths with the corresponding data of Ballance et al. (2002) shows very good agreement for a majority of transitions, both allowed as well as forbidden, which is highly satisfactory. This is in spite of the fact that they have included radiation damping in their calculations, whereas we have not. Our present relativistic R -matrix calculations and those performed earlier by Kisielius et al. (1996) do not include radiation damping. However, both

sets of results for Υ not only agree with each other, especially at lower temperatures which are considerably affected by resonances, but also with those of Ballance et al., for a majority of transitions. We can therefore confidently state that radiation damping is not a significant contributing factor for transitions in Fe XXVI.

Acknowledgements. This work has been financed by the Engineering and Physical Sciences Research Council (EPSRC) and the Science and Technology Facilities Council (STFC) of the United Kingdom. We would like to thank Dr. Patrick Norrington for providing his GRASP and DARC codes prior to publication, and FPK is grateful to AWE Aldermaston for the award of a William Penney Fellowship. Finally, KMA would like to thank the University of Miyazaki for the hospitality enjoyed during a visit in December 2007.

References

- Aggarwal, K. M., Igarashi, A., Keenan, F. P., & Nakazaki, S. 2008, *A&A*, 479, 585
- Aggarwal, K. M., & Keenan, F. P. 1999, *J. Phys. B*, 32, 3585
- Aggarwal, K. M., & Keenan, F. P. 2001, *Phys. Scr.*, 64, 439
- Aggarwal, K. M., & Keenan, F. P. 2003a, *MNRAS*, 338, 412
- Aggarwal, K. M., & Keenan, F. P. 2003b, *A&A*, 399, 799
- Aggarwal, K. M., & Keenan, F. P. 2004a, *A&A*, 418, 371
- Aggarwal, K. M., & Keenan, F. P. 2004b, *A&A*, 427, 763
- Aggarwal, K. M., & Keenan, F. P. 2005a, *A&A*, 429, 1117
- Aggarwal, K. M., & Keenan, F. P. 2005b, *A&A*, 439, 1215
- Aggarwal, K. M., & Keenan, F. P. 2006, *A&A*, 450, 1249
- Aggarwal, K. M., & Keenan, F. P. 2007, *A&A*, 463, 399
- Aggarwal, K. M., & Keenan, F. P. 2008, *J. Phys. B*, 41, 015701
- Aggarwal, K. M., & Kingston, A. E. 1993, *ApJS*, 85, 187
- Aggarwal, K. M., Keenan, F. P., & Msezane, A. Z. 2001, *J. Phys. B*, 34, L757
- Aggarwal, K. M., Keenan, F. P., & Msezane, A. Z. 2003a, *A&A*, 410, 349
- Aggarwal, K. M., Keenan, F. P., & Msezane, A. Z. 2003b, *ApJS*, 144, 169
- Aggarwal, K. M., Keenan, F. P., & Kisielius, R. 2004, *A&A*, 420, 783
- Aggarwal, K. M., Keenan, F. P., Kato, T., & Murakami I. 2006, *A&A*, 460, 331
- Ait-Tahar, S., Grant, I. P., & Norrington, P. H. 1996, *Phys. Rev.*, A, 54, 3984
- Badnell, N. R. 1997, *J. Phys. B*, 30, 1
- Ballance, C. P., Badnell, N. R., & Berrington, K. A. 2002, *J. Phys. B*, 35, 1095
- Berrington, K. A., Burke, P. G., LeDourneuf, M., et al. 1978, *Comput. Phys. Commun.*, 14, 367
- Berrington, K. A., Eissner, W. B., & Norrington, P. H. 1995, *Comput. Phys. Commun.*, 92, 290
- Burgess, A., Hummer, D. G., & Tully, J. A. 1970, *Phil. Trans. Roy. Soc.*, 266 A, 225
- Dere, K. P., Landi, E., Young, P. R., & Del Zanna, G. 2001, *ApJS*, 134, 331
- Gu, M. F. 2003, *ApJ*, 582, 1241
- Grant, I. P., McKenzie, B. J., Norrington, P. H., Mayers, D. F., & Pyper, N. C. 1980, *Comput. Phys. Commun.*, 21, 207
- Igarashi, A., Horiguchi, Y., Ohsaki, A., & Nakazaki, S. 2003, *J. Phys. Soc. Japan*, 72, 307
- Igarashi, A., Ohsaki, A., & Nakazaki, S. 2005, *J. Phys. Soc. Japan*, 74, 321
- Jonauskas, V., Keenan, F. P., Foord, M. E., et al. 2004, *A&A*, 416, 383
- Kato, T. 1976, *ApJS*, 30, 397
- Kisielius, R., Berrington, K. A., & Norrington, P. H. 1996, *A&AS*, 118, 157
- McKeown, K., Aggarwal, K. M., Keenan, F. P., & Rose, S. J. 2004, *Phys. Scr.*, 70, 295
- Summers, H. P., & McWhirter, R. W. P. 1979, *J. Phys. B*, 12, 2387